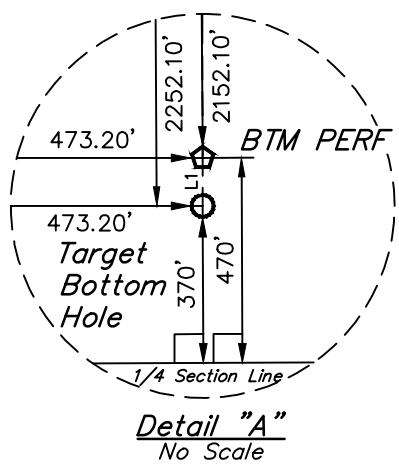
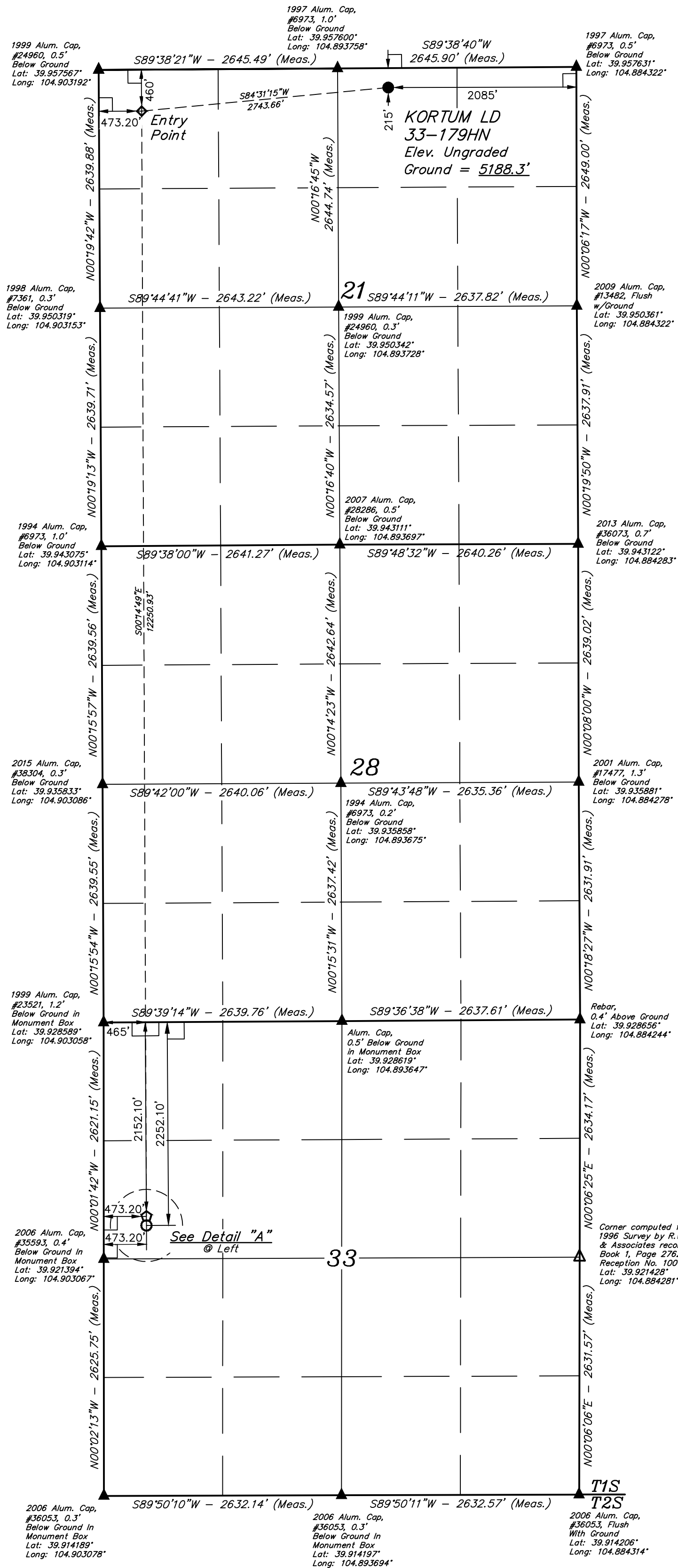


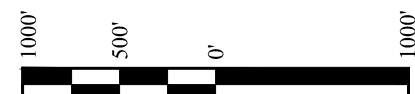
T1S, R67W, 6th P.M.

- LEGEND:**
- = 90° SYMBOL
 - = PROPOSED WELLHEAD
 - ◆ = ENTRY POINT
 - ⊙ = BTM PERF.
 - = TARGET BOTTOM HOLE
 - ▲ = SECTION CORNERS LOCATED. (NAD 83)
 - △ = SECTION CORNERS RE-ESTABLISHED. (Not Set on Ground.) (NAD 83)



LINE TABLE		
LINE	DIRECTION	LENGTH
L1	S00°01'42"E	100.00'

PDOP = 1.2



NAD 83 (SURFACE LOCATION)	NAD 83 (ENTRY POINT)	NAD 83 (BTM PERF)	NAD 83 (TARGET BOTTOM HOLE)
LATITUDE = 39°57'25.26" (39.957016) LONGITUDE = 104°53'30.32" (104.891756)	LATITUDE = 39°57'22.71" (39.956308) LONGITUDE = 104°54'05.39" (104.901497)	LATITUDE = 39°55'21.67" (39.922686) LONGITUDE = 104°54'04.97" (104.901381)	LATITUDE = 39°55'20.69" (39.922414) LONGITUDE = 104°54'04.97" (104.901381)
NAD 27 (SURFACE LOCATION)	NAD 27 (ENTRY POINT)	NAD 27 (BTM PERF)	NAD 27 (TARGET BOTTOM HOLE)
LATITUDE = 39°57'25.31" (39.957031) LONGITUDE = 104°53'28.41" (104.891225)	LATITUDE = 39°57'22.77" (39.956325) LONGITUDE = 104°54'03.48" (104.900967)	LATITUDE = 39°55'21.73" (39.922703) LONGITUDE = 104°54'03.05" (104.900847)	LATITUDE = 39°55'20.74" (39.922428) LONGITUDE = 104°54'03.05" (104.900847)

CERTIFICATE OF RECORD REGISTRATION
 THIS IS TO CERTIFY THAT THE ABOVE SURVEY WAS PREPARED AND PUBLISHED IN ACCORDANCE WITH THE NOTES OF ACTUAL SURVEYS MADE BY ME OR UNDER MY SUPERVISION AND THAT THE SAME ARE TRUE AND CORRECT TO THE BEST OF MY KNOWLEDGE AND BELIEF.
 JARED CHRISTOPHER, SURVEYOR
 REGISTRATION NO. 28285
 STATE OF COLORADO
 18

REV: 5 07-10-18 T.L.L. (SHL CHANGE)

GREAT WESTERN OPERATING COMPANY

KORTUM LD 33-179HN
 NW 1/4 NE 1/4, SECTION 21, T1S, R67W, 6th P.M.
 ADAMS COUNTY, COLORADO

SURVEYED BY: JARED CHRISTOPHER, G.W.	DATE: 11-21-16
DRAWN BY: L.C.S.	DATE DRAWN: 04-04-16
SCALE: 1" = 1000'	

WELL LOCATION PLAT

