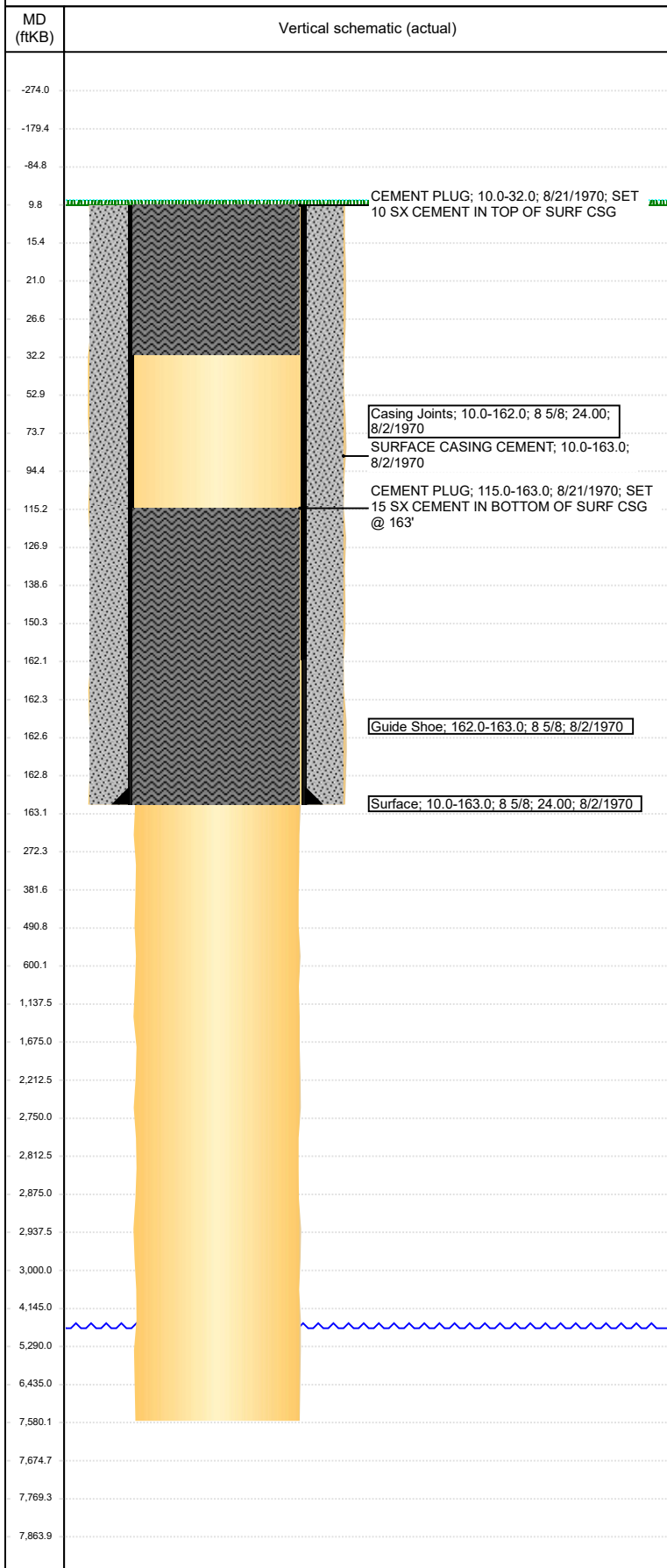


# Wellbore Schematic Input Report

**Well Name: E RANCHES 01**

VERTICAL - ORIGINAL HOLE, 9/26/2018 9:52:15 AM



Well Header							
API 05-123-07184		Well Report Center			Well Configuration Type VERTICAL		
Original KB Elevation (ft) 4,780		KB - GL / MSL (ftKB) 10.00		Spud Date 8/1/1970		P & A Date 8/22/1970	
Production Route			Well Production Status PA				SoRT Ignore Yes
Directions To Well				Actual Latitude (°) 40.20535800		Actual Longitude (°) -104.58046400	
Comment							
Congressional Location							
Quarter 3 SW	Quarter 4 SW	Section 20	Township 3	Twnshp N/S Dir N	Range 64	Range E/W Dir W	
Rig Operator							
Rig Operator							
Plug Back Total Depths							
Date	Depth (ftKB)	Method			Com		
Wellbore Sections							
Section Des		Size (in)		Act Top, MD (ftKB)		Act Btm, MD (ftKB)	
SURFACE		12 1/4		10		163	
PRODUCTION		7 7/8		163		7,580	
Zone Statuses							
Zone Name		Status Date			Status		
Casing Strings							
Surface, 163.0ftKB							
Casing Description Surface		Run Date 8/2/1970	OD (in) 8 5/8	Wt/Len (l... 24.00	Grade	Top, MD (ft... 10.0	MD (ftKB) 163.0
Cement							
Des			Start Date		Top (ftKB)		Btm (ftKB)
SURFACE CASING CEMENT			8/2/1970		10.0		163.0
CEMENT PLUG			8/21/1970		115.0		163.0
CEMENT PLUG			8/21/1970		10.0		32.0
Proposed Cement							
Des					Top (ftKB)		Btm (ftKB)
Balance Plug					2,750.0		3,000.0
Balance Plug					10.0		600.0
Tubing Strings							
Tubing Description		Run Date	String...	ID (in)	Wt (lb/ft)	Grade	Len (ft) Set De...
Other In Hole							
Run Date		Des			OD (in)	Top (ftKB)	Btm (ftKB)
Proposed Other In Hole							
Des				OD (in)	Top (ftKB)		Btm (ftKB)
Logs							
Date		Type			Top, MD (ftKB)		Btm, MD (ftKB)
8/21/1970		INDUCTION			163.0		7,597.0
Job Supply Amounts							
Supply Item Des		Type	Uni...	Job Category		Total...	Total... Total...