



Pioneer Energy Services

NOISE SURVEY LOG

K.P. KAUFMANN
Company

Well MAUL 20-2

Field
WATTENBERG

County **WELD** State **COLORADO**

Location: API #: 05-123-12420

1650' FNL & 990' FEL
SE NE

SEC 20	TWP 1N	RGE 65W
--------	--------	---------

TEMP / CCL

--	--

Permanent Datum	GL	Elevation 4962'
Log Measured From	KB	10' Above Perm. Datum

Drilling Measured From KB

	ONE
--	-----

	N/A
--	-----

1100	
------	--

WAL	0001
-----	------

Temperature	N/A
208 F	

scale	OPEN
n	OPEN

P-132

FOR

	MR. F
--	-------

--	--

4.5"

--	--

Comments

N/A DENOTES NOT AVAILABLE OR NON-APPLICABLE

THANK YOU FOR USING PIONEER ENERGY SERVICES.

Your Pioneer Energy Services Crew

Engineer: SCHOENROGGE
Operator: PARRISH
Operator:
Operator:

Tool Data - Services
CCL-TEMP-NOISE

Serial Number

Top - Bottom

BHTEMP_Src	BOREID	BOTTEMP	CASEOD	CASETHCK	PERFS	SRFTEMP
TEMP	in	degF	in	in		degF
	7.875	208	4.5	0.25	0	50
TDEPTH						
ft						
6230						

Variable Description

BHTEMP_Src : BHTEMP Input Source Selector
BOREID : Borehole I.D.
BOTTEMP : Bottom Hole Temperature
CASEOD : Casing O.D.

CASETHCK : Casing Thickness
PERFS : Perforation Flag
SRFTEMP : Surface Temperature
TDEPTH : Total Depth

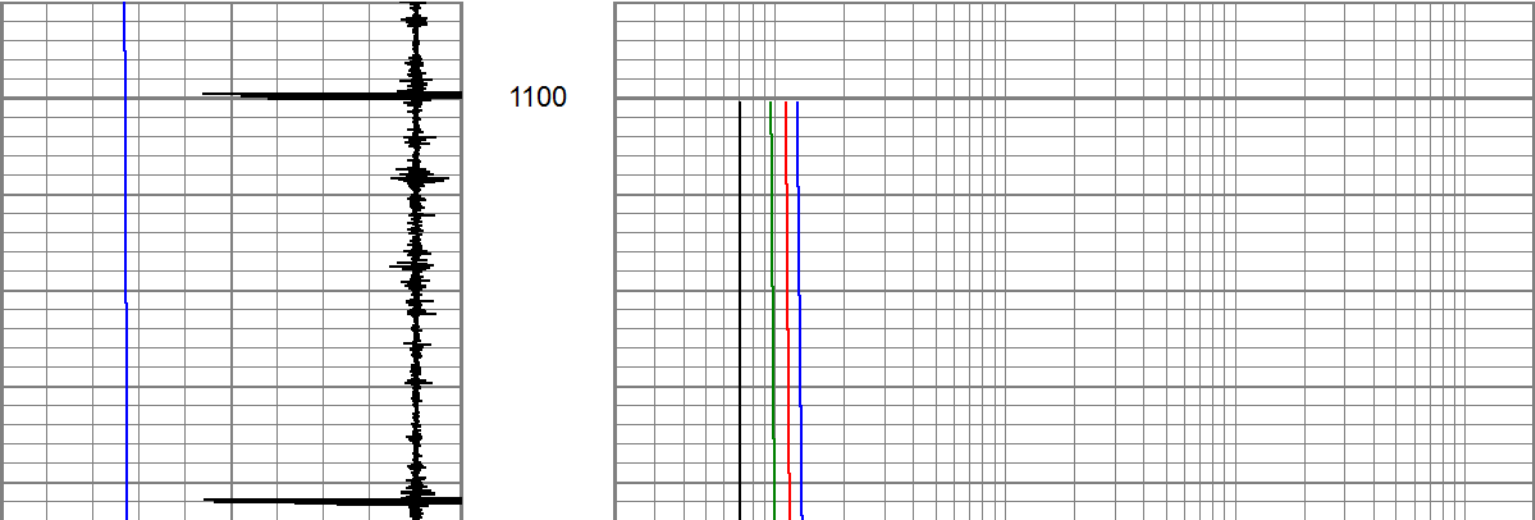
Survey Table: field/well/run1/_noise/_survtbl_/1

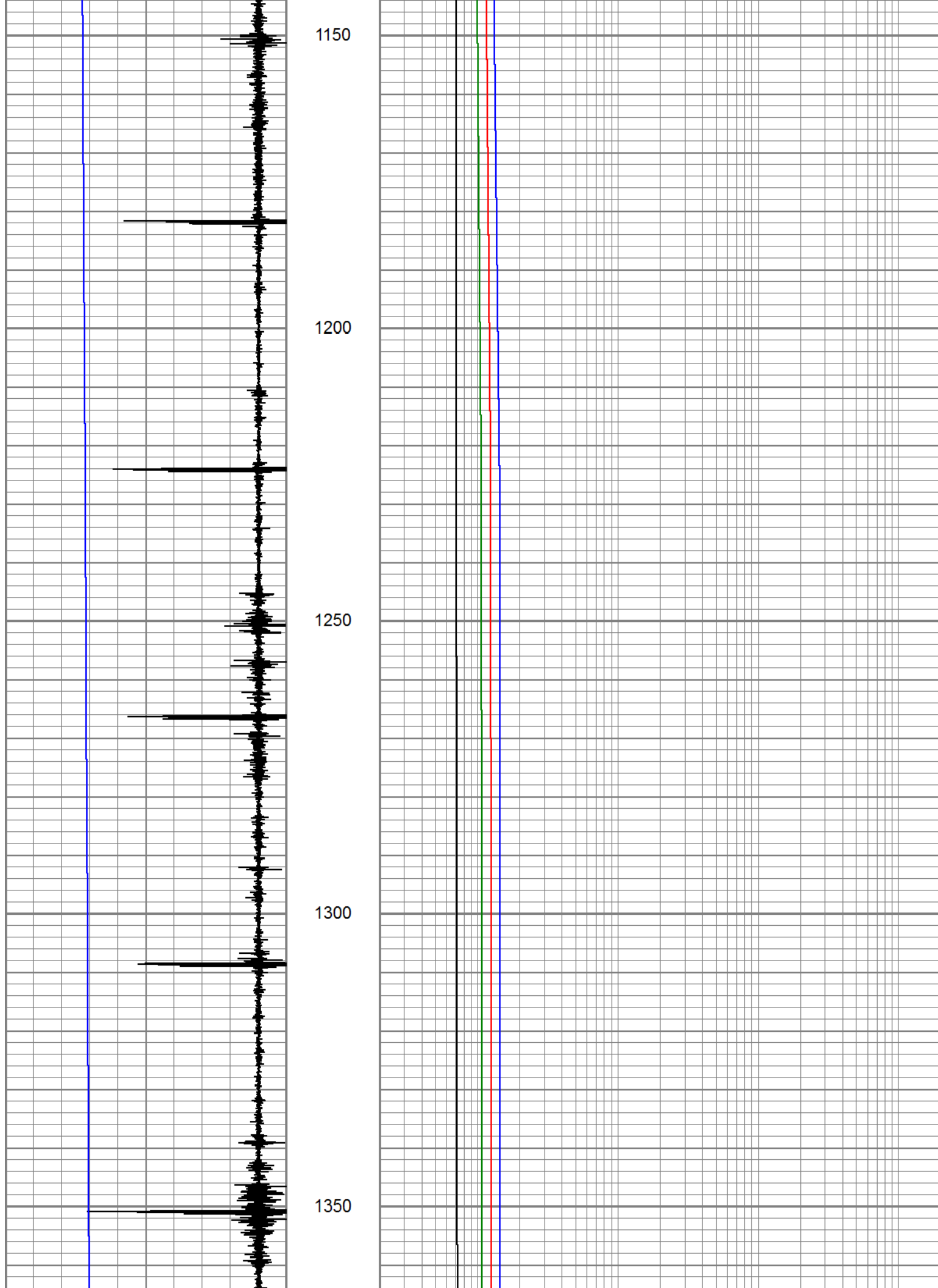
#	Depth	Time	200Hz	600Hz	1000Hz	2000Hz	4000Hz	6000Hz	
10	1100.52	11:59:36	12.4	11.1	9.5	7.0	4.6	3.4	
9	1224.36	11:55:08	14.2	12.3	10.5	7.0	4.9	3.3	
8	2224.42	11:48:17	14.7	13.5	11.9	7.9	5.3	3.6	
7	3224.41	11:42:08	17.6	14.0	12.5	9.0	5.8	3.9	
6	4224.41	11:35:30	17.3	15.0	13.3	9.7	5.8	3.8	
4	5224.42	11:27:58	26.6	23.3	20.9	13.8	8.0	5.4	
3	6224.20	11:17:21	27.1	24.6	21.2	13.9	8.5	5.9	

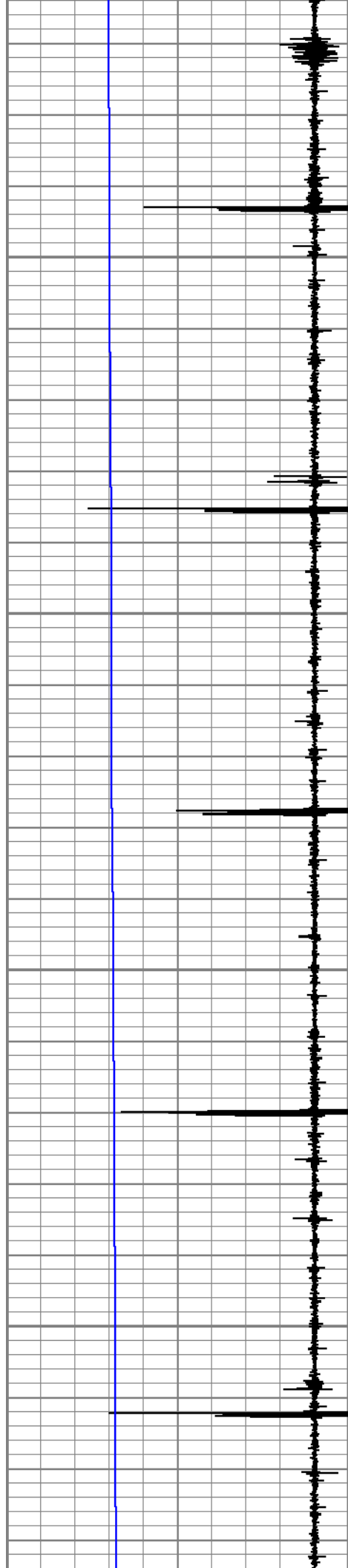
Database File
Dataset Pathname
Presentation Format
Dataset Creation
Charted by

kaufman.db
main
pinr_noise
Tue Sep 25 12:03:31 2018
Depth in Feet scaled 1:240

-9	CCL	1	2	2000HZ (mV)	20000
25	TEMP (degF)	225	2	1000HZ (mV)	20000
			2	600HZ (mV)	20000
			2	200HZ (mV)	20000





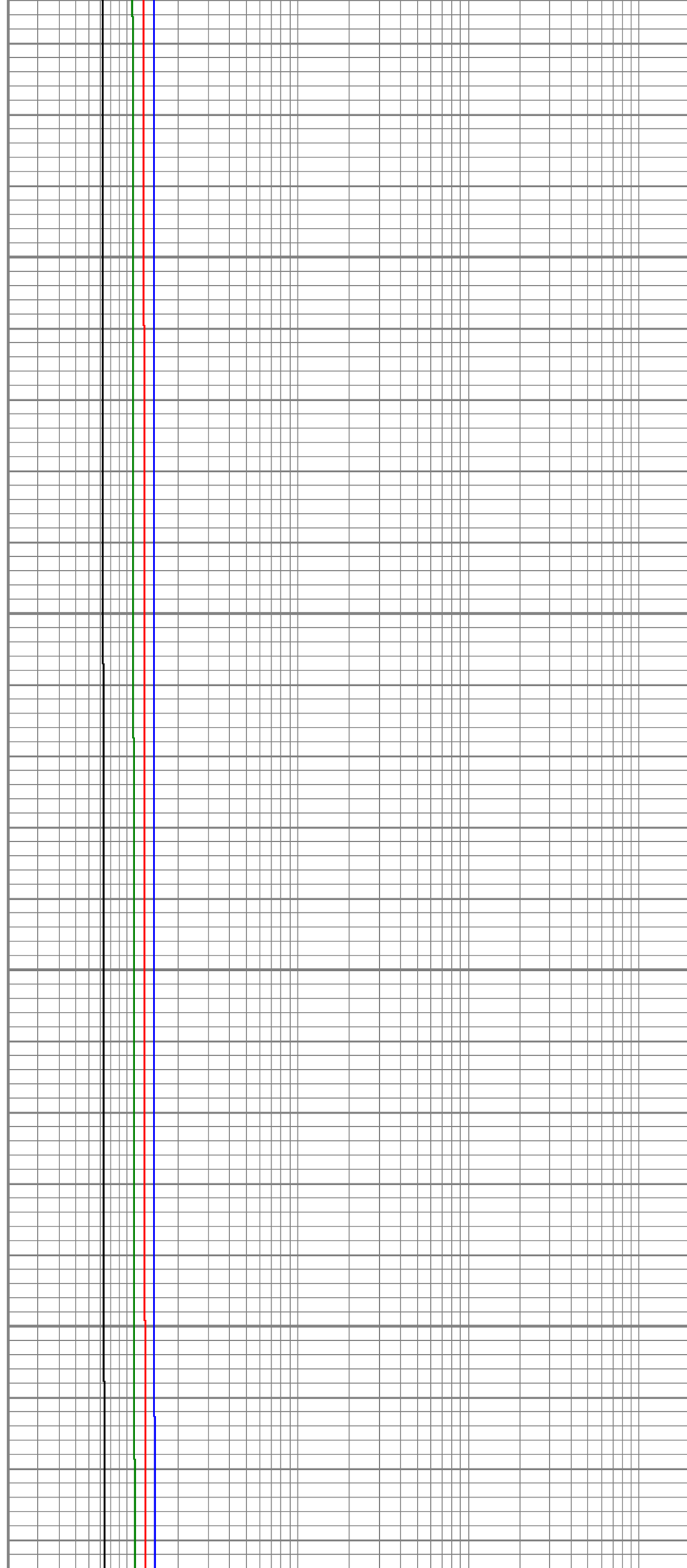


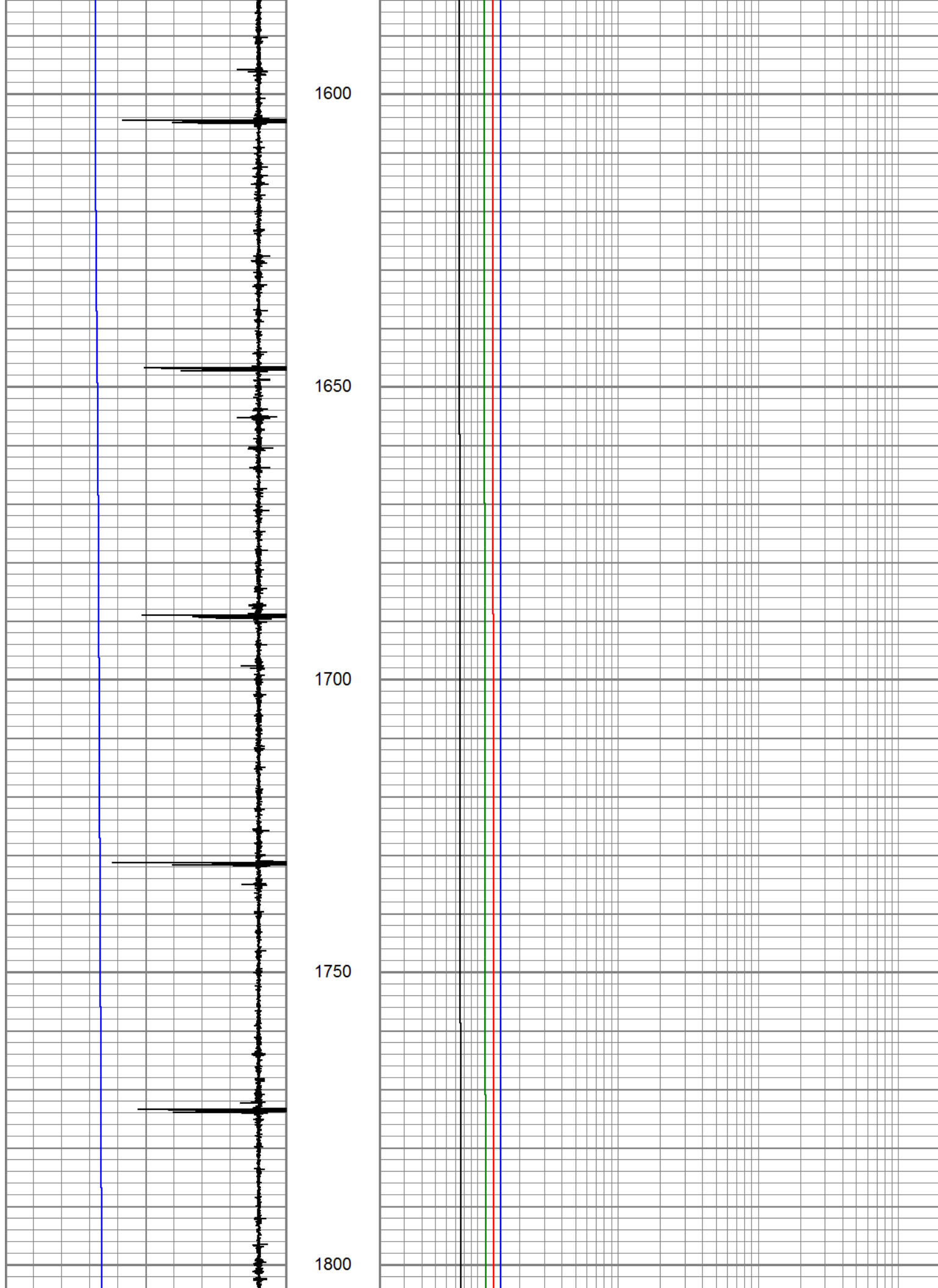
1400

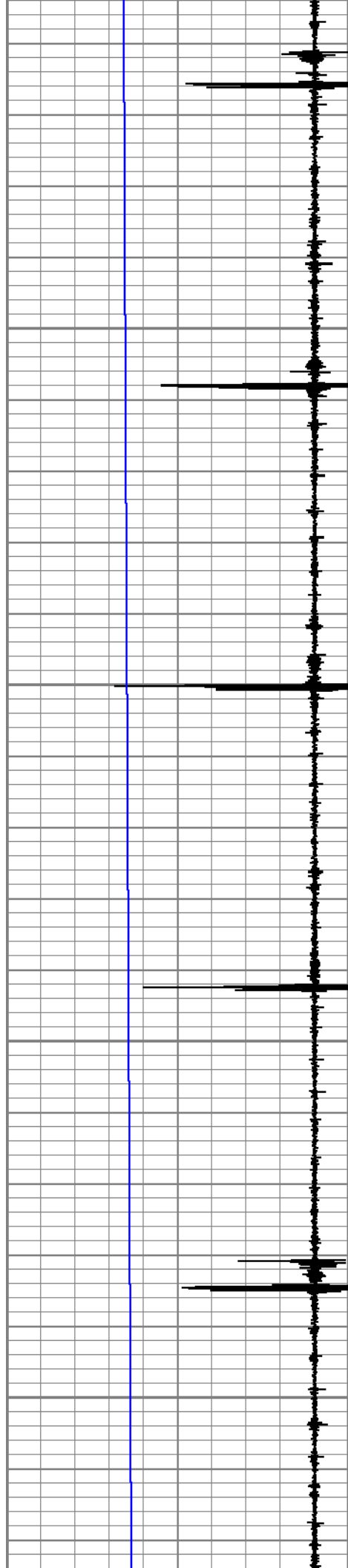
1450

1500

1550





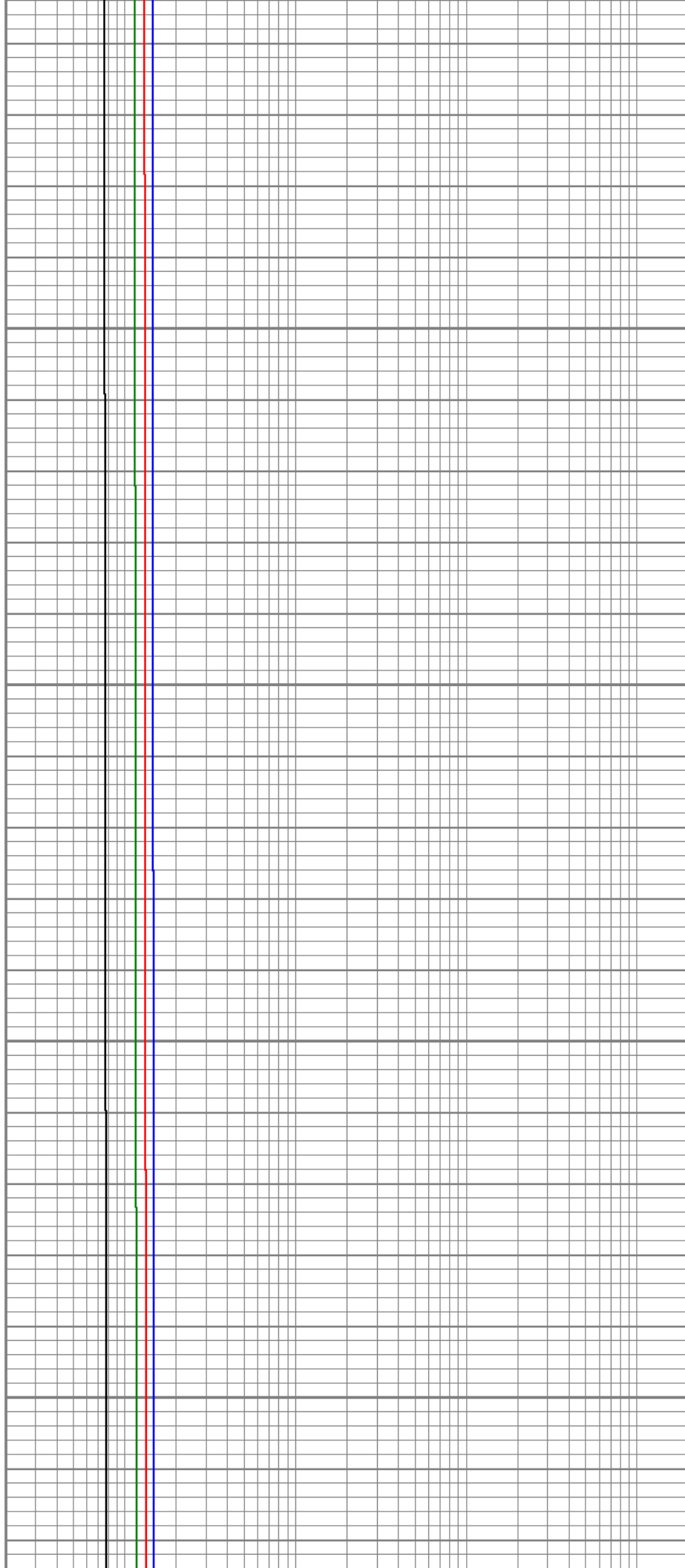


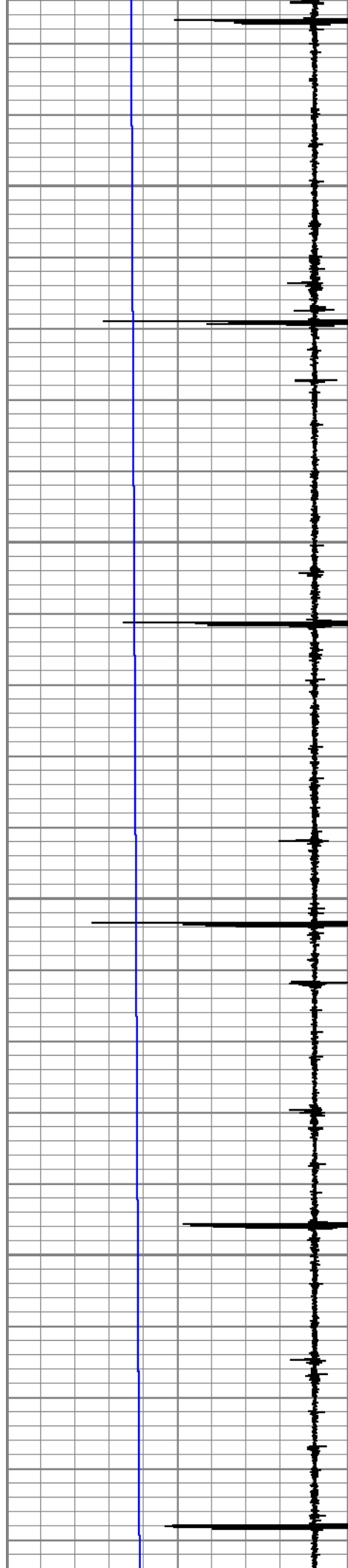
1850

1900

1950

2000



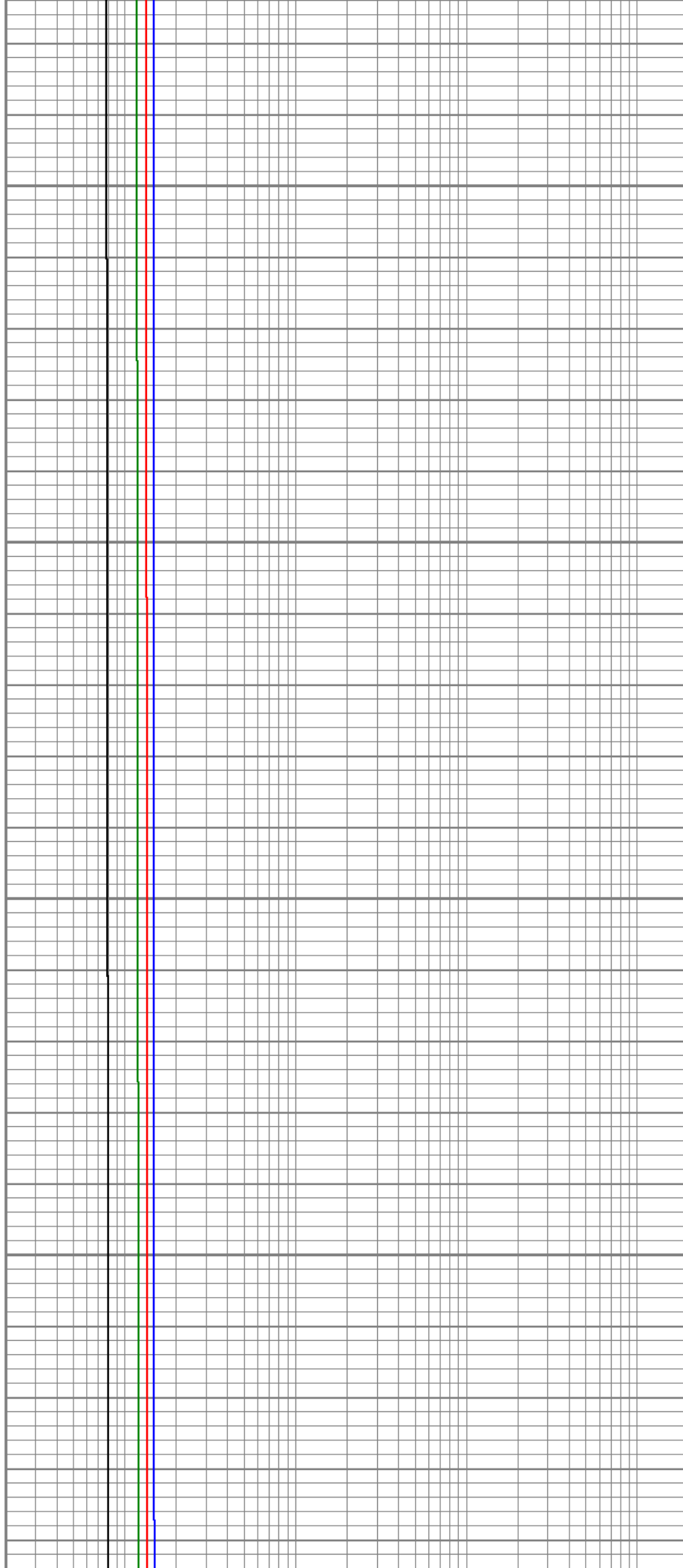


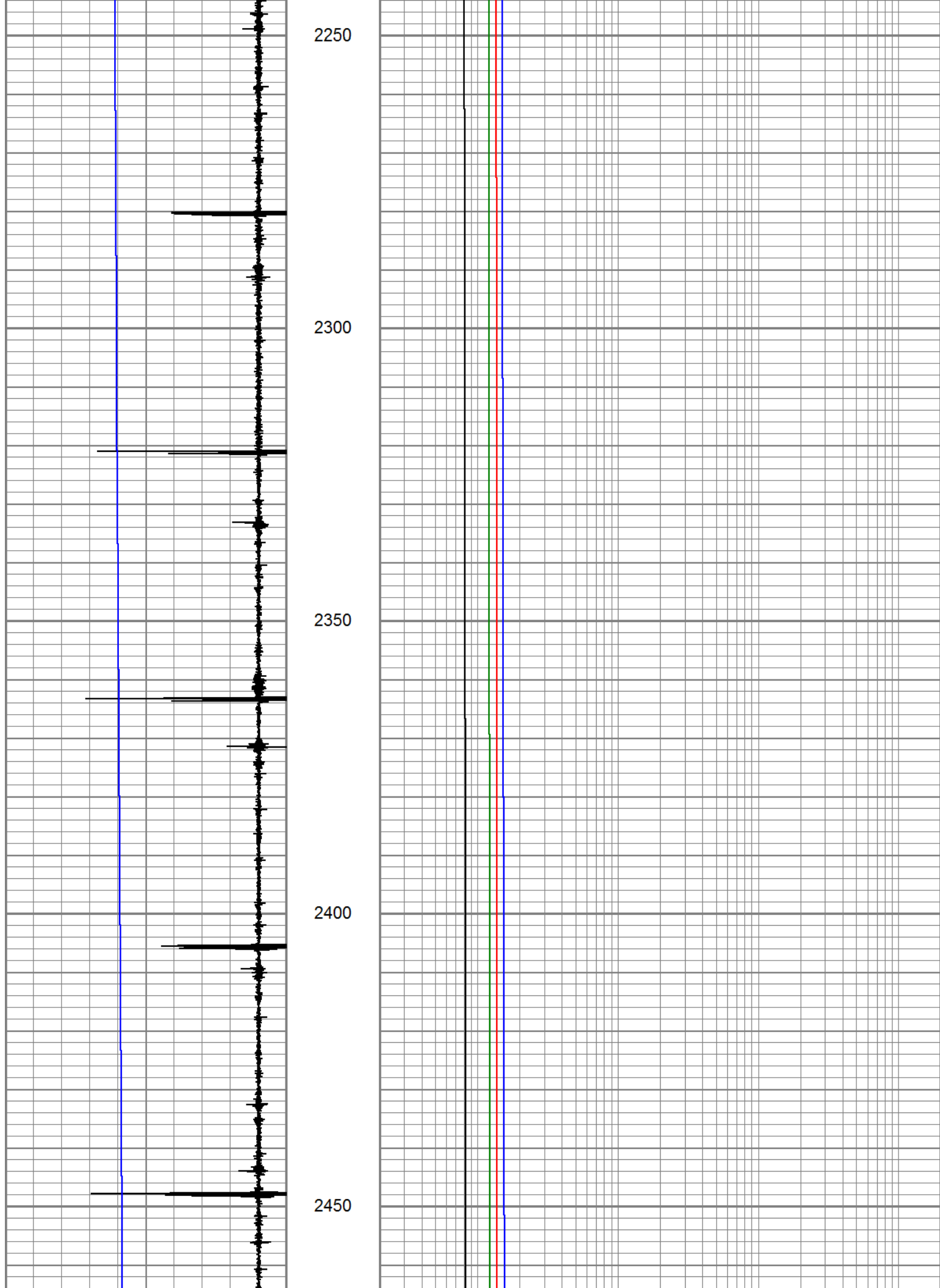
2050

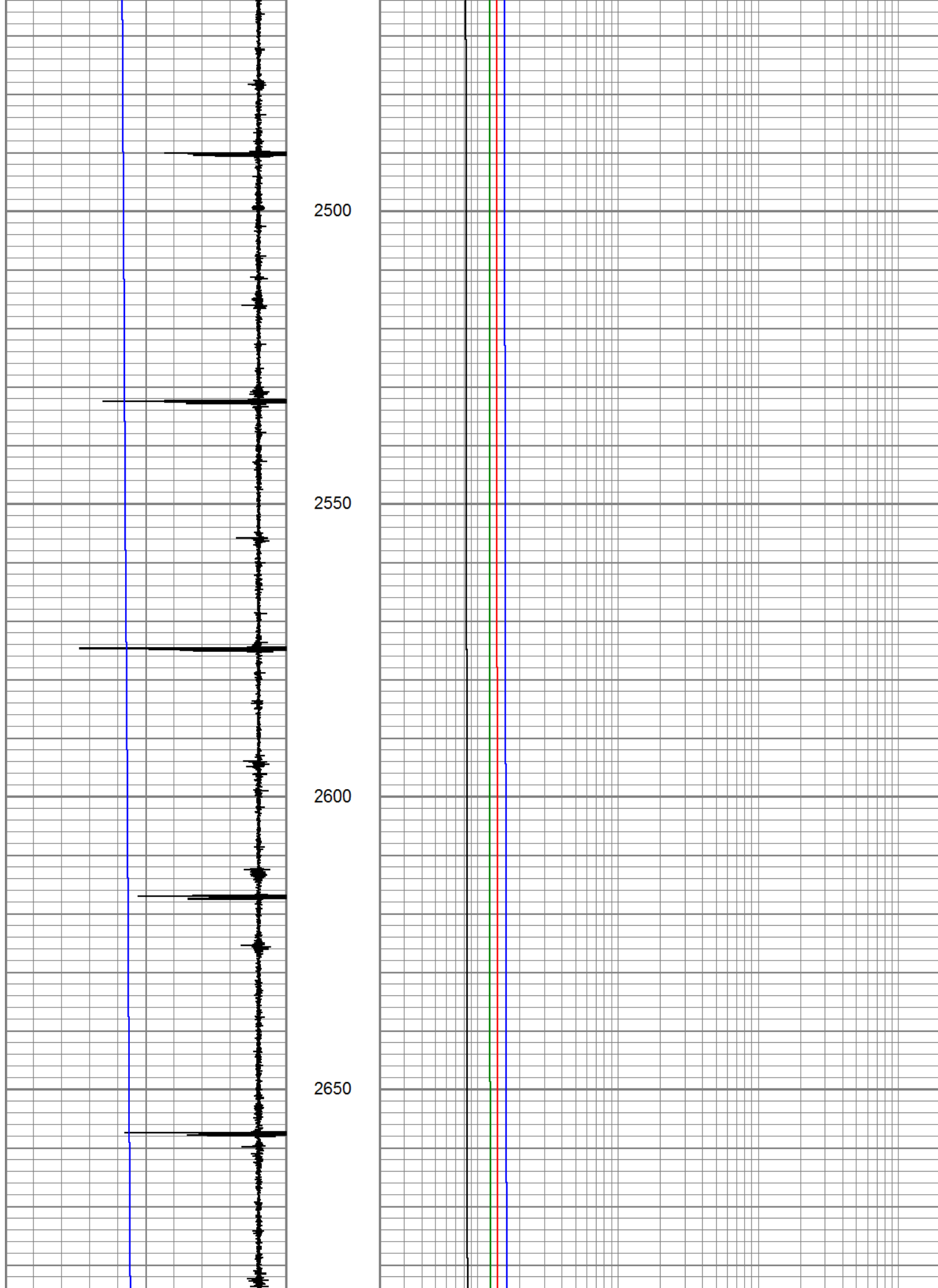
2100

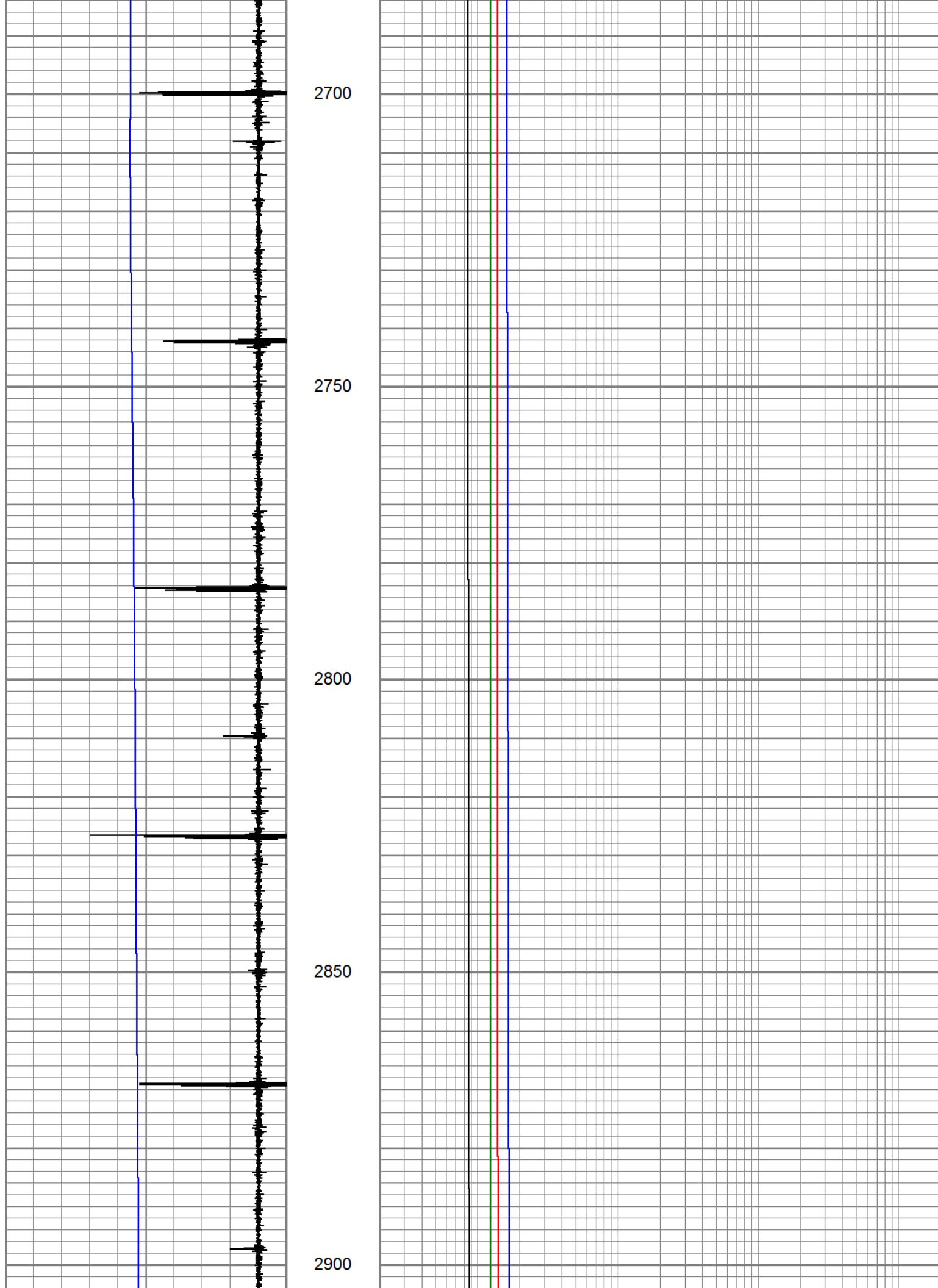
2150

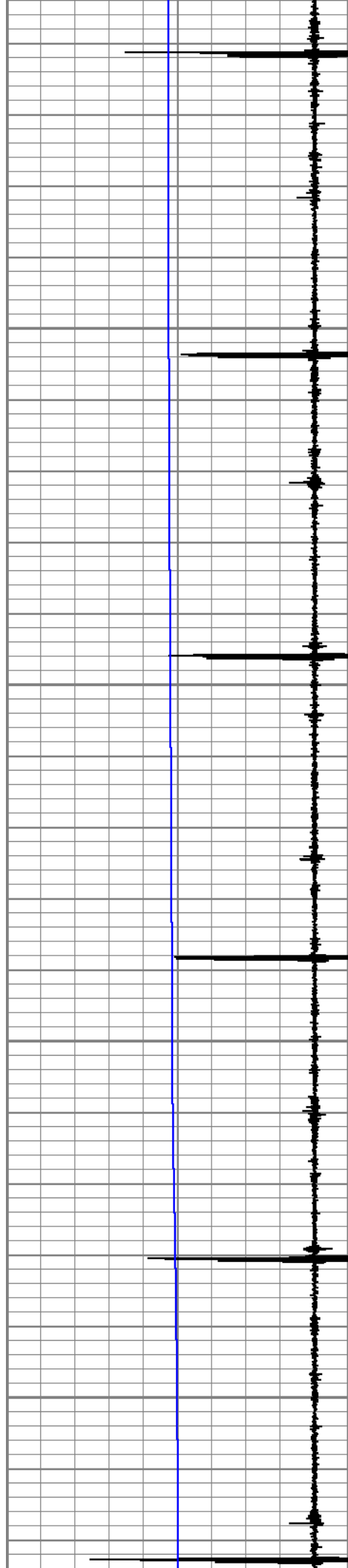
2200









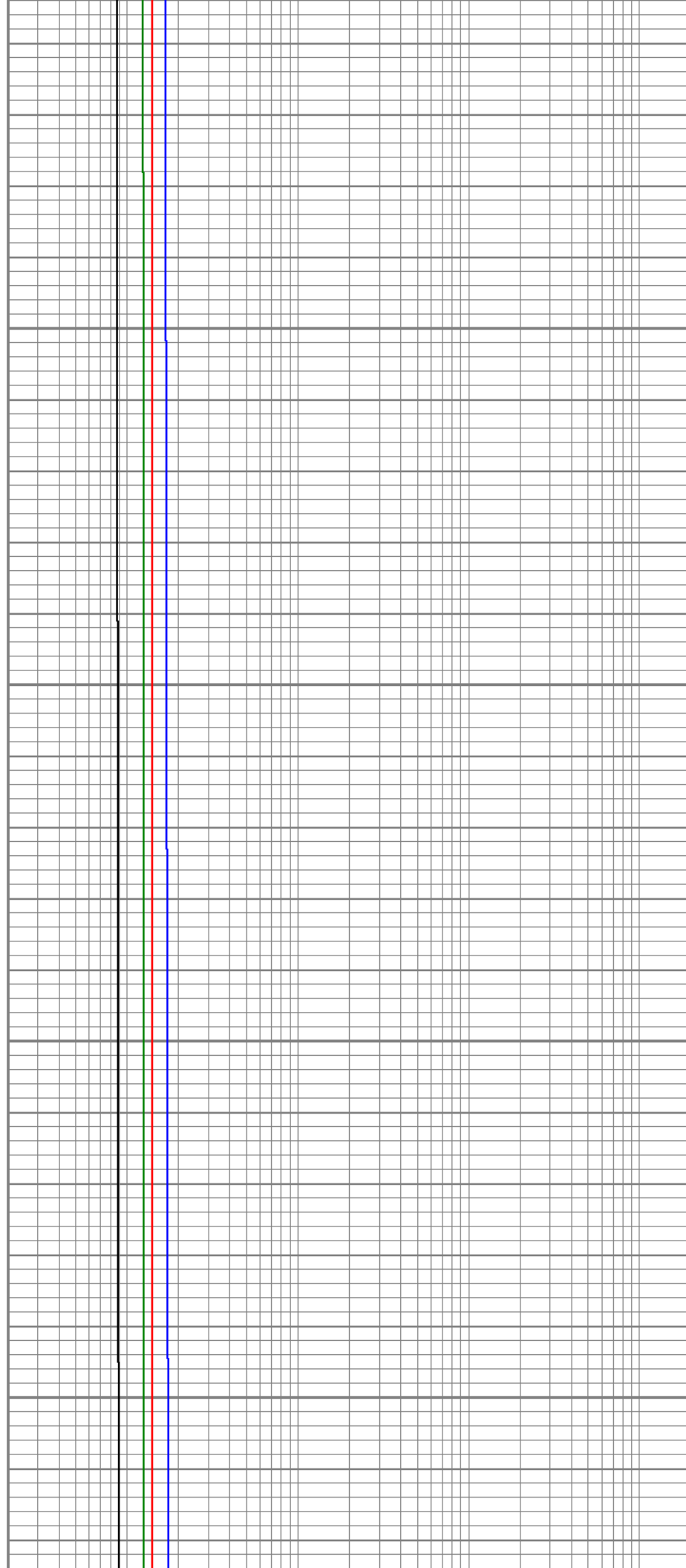


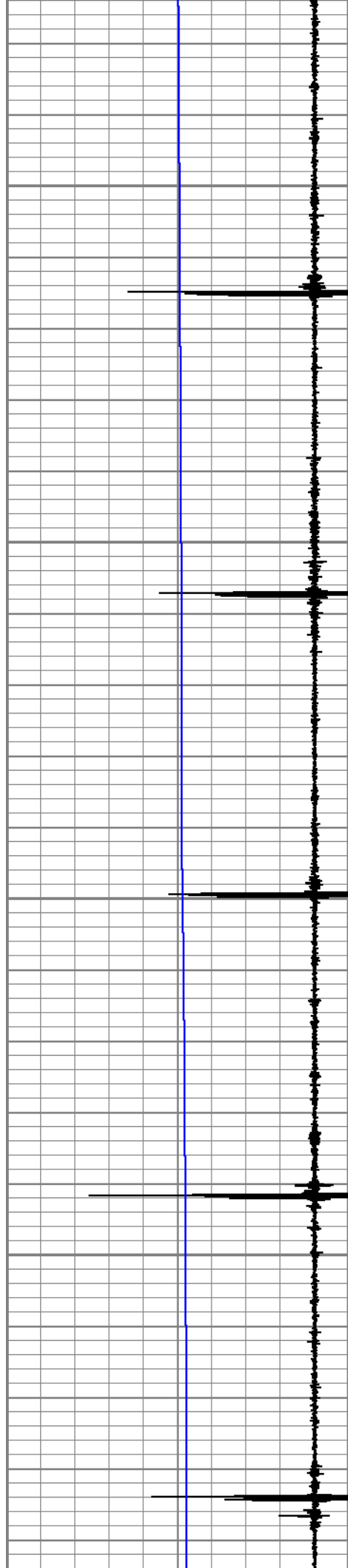
2950

3000

3050

3100



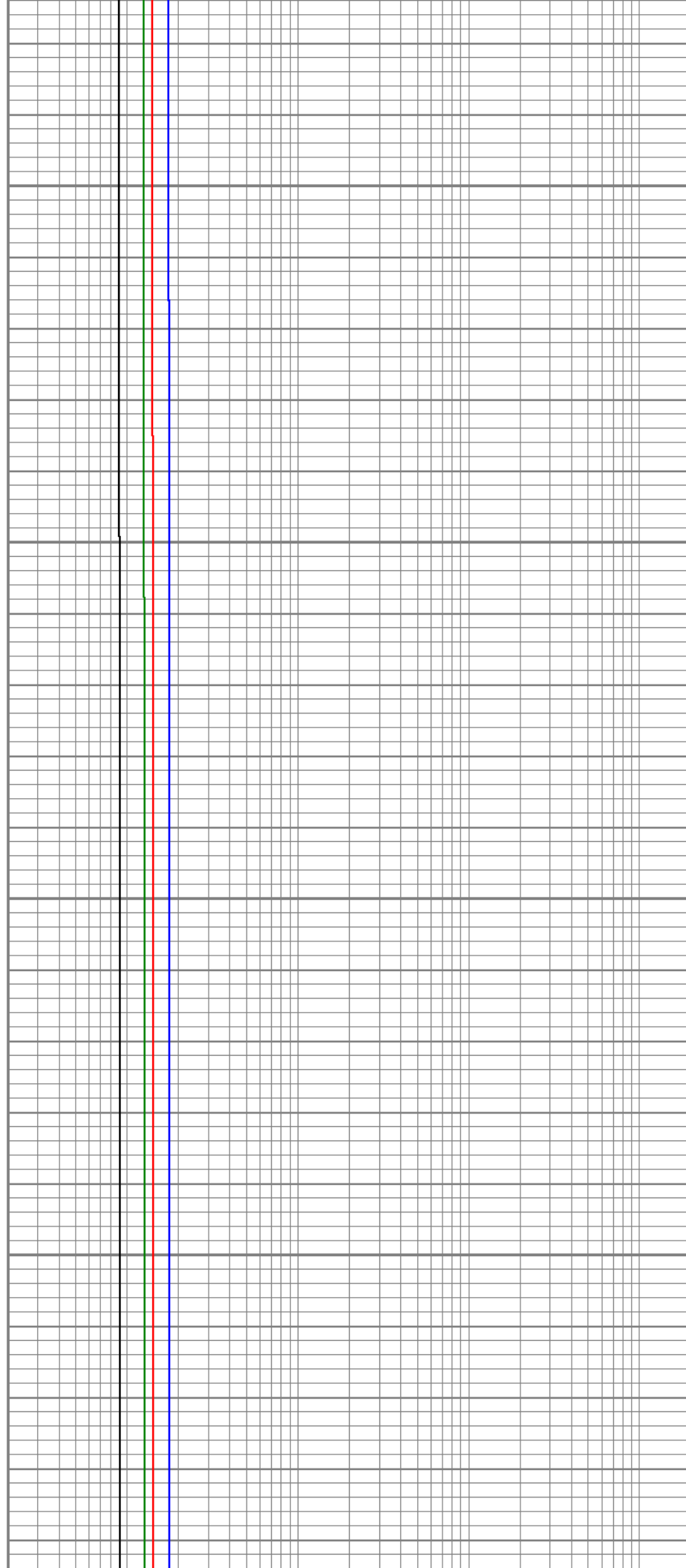


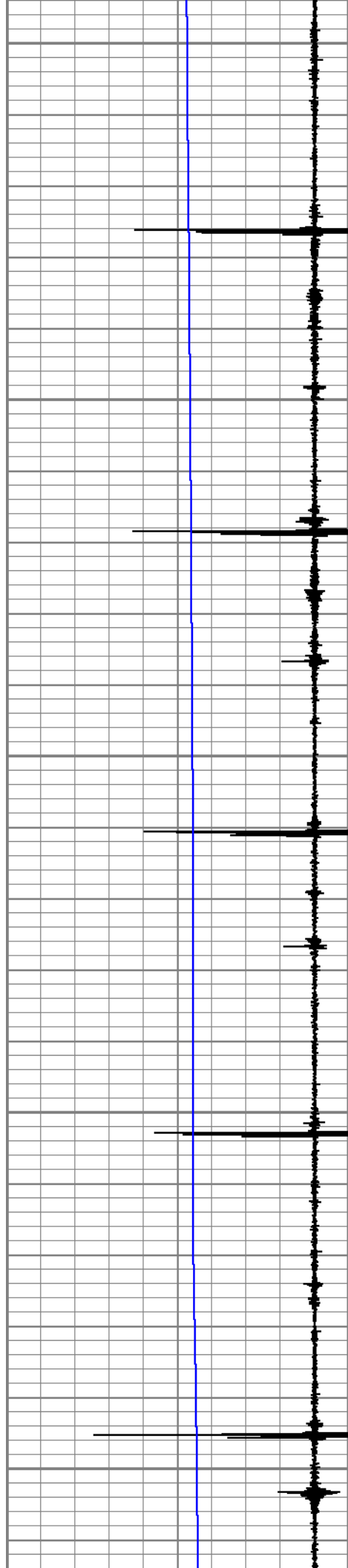
3150

3200

3250

3300





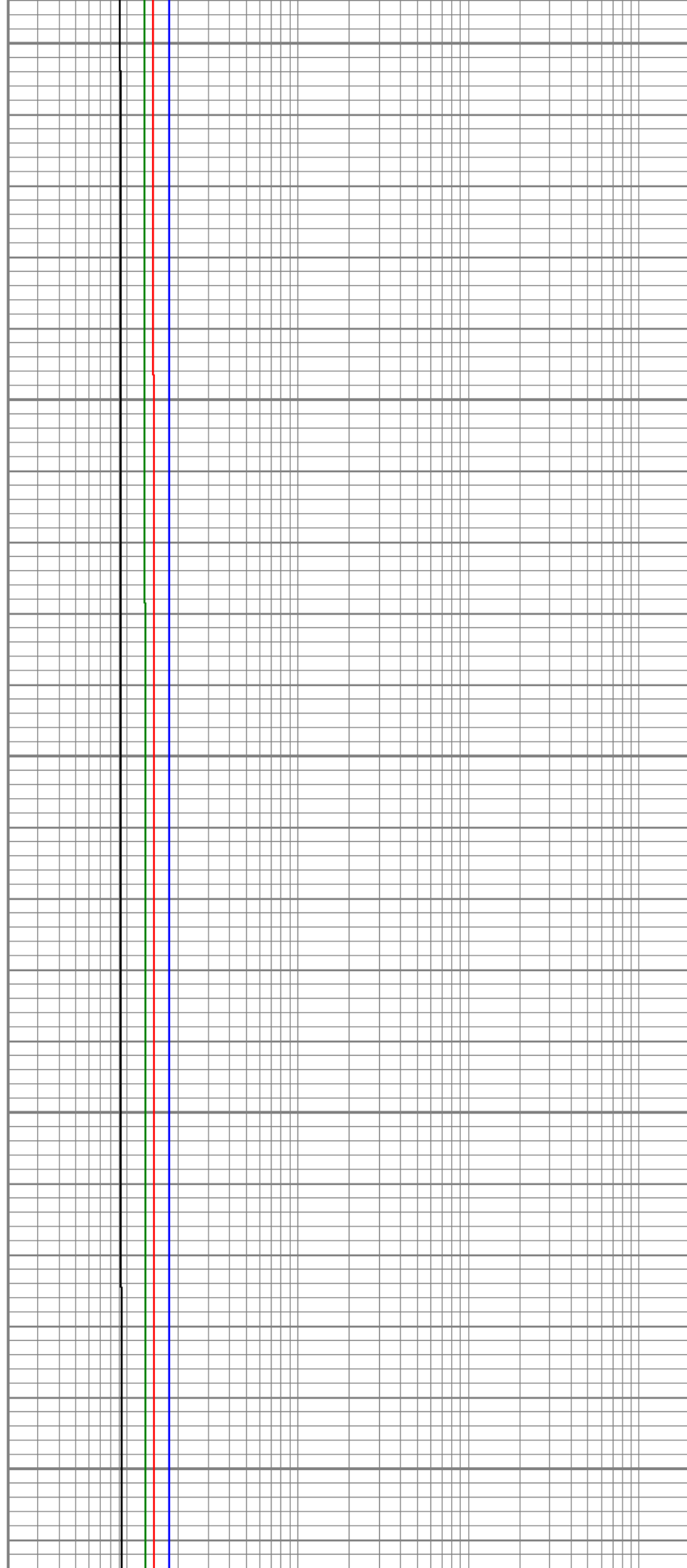
3350

3400

3450

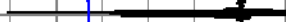
3500

3550





3600



3650

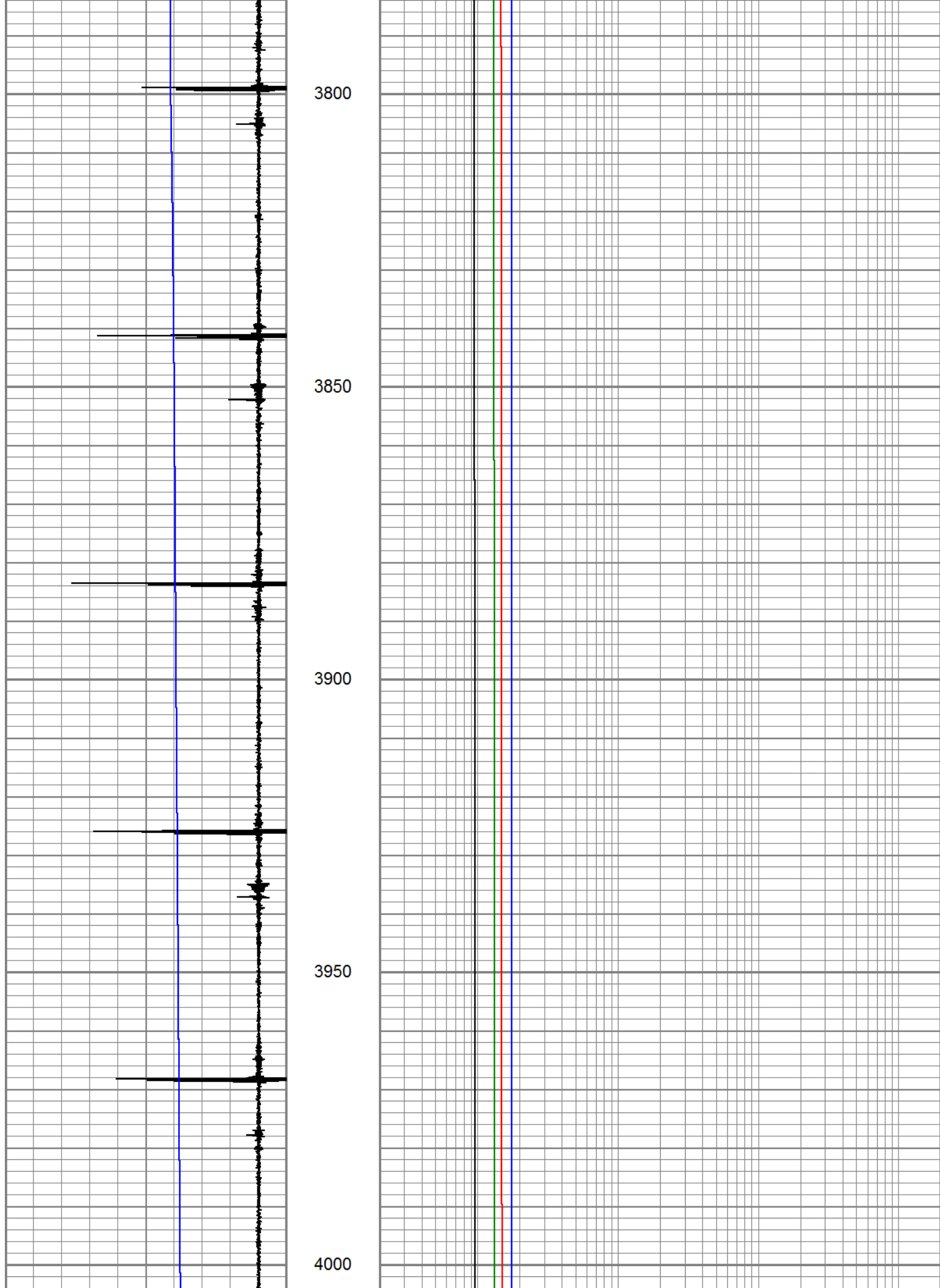


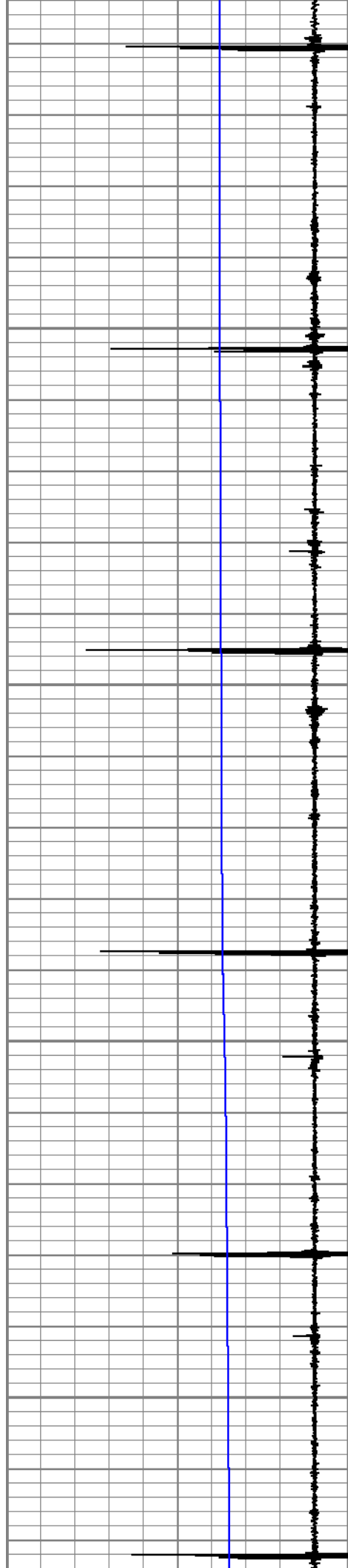
3700



3750





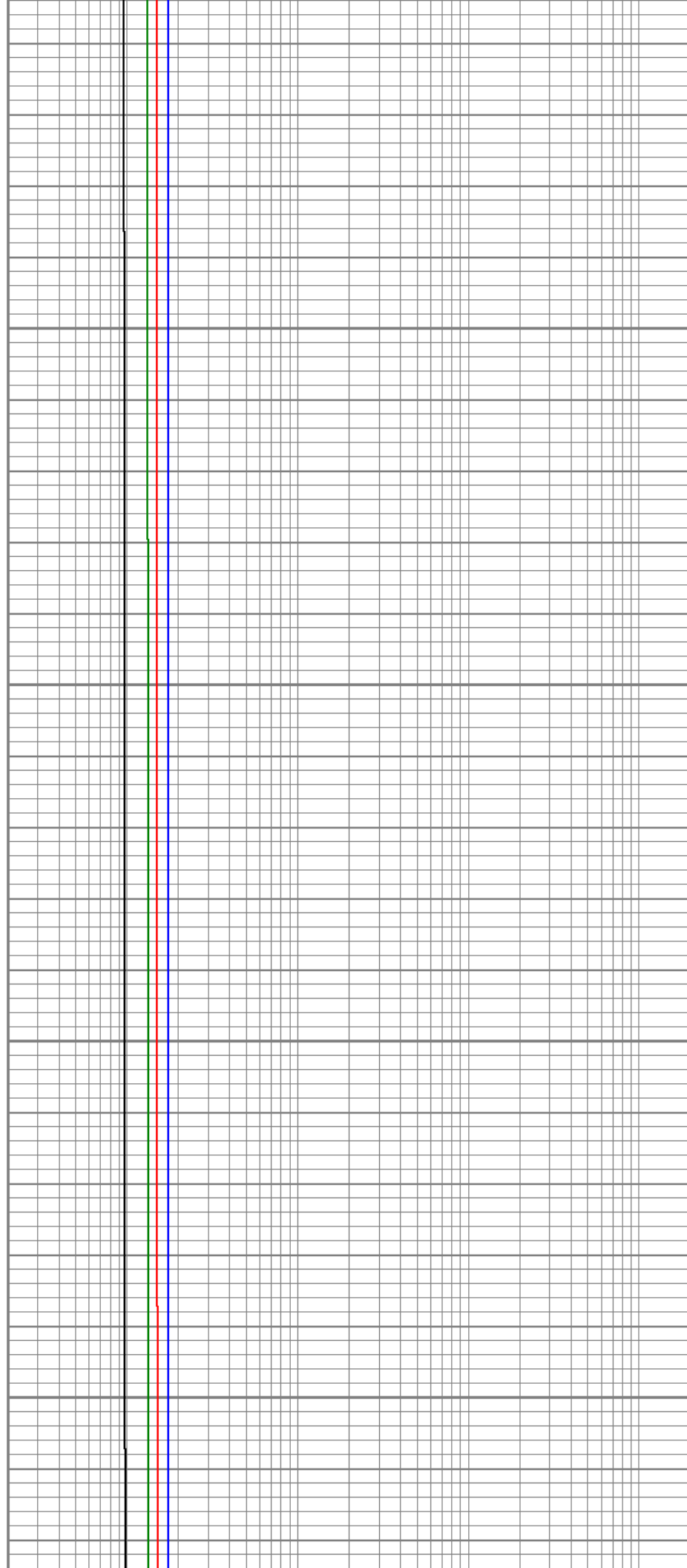


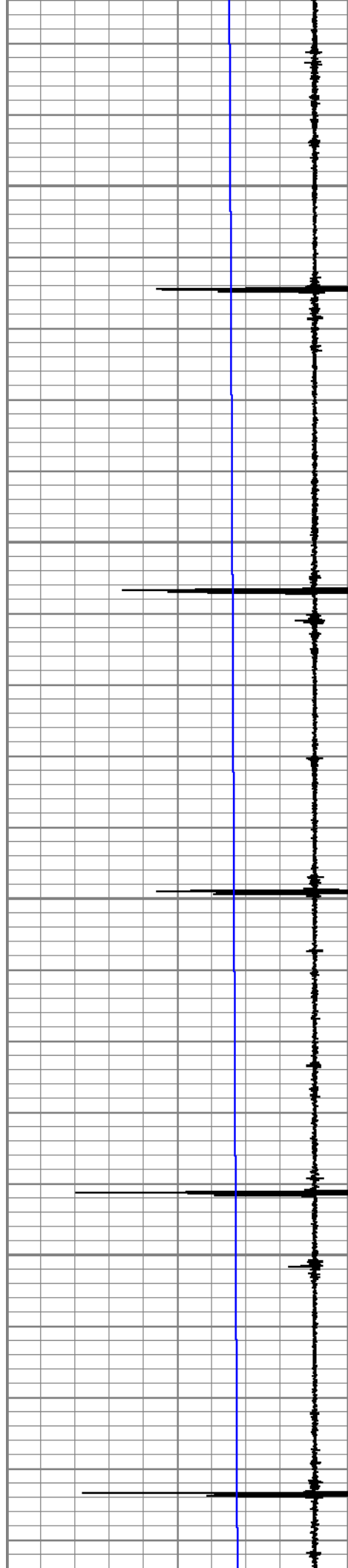
4050

4100

4150

4200



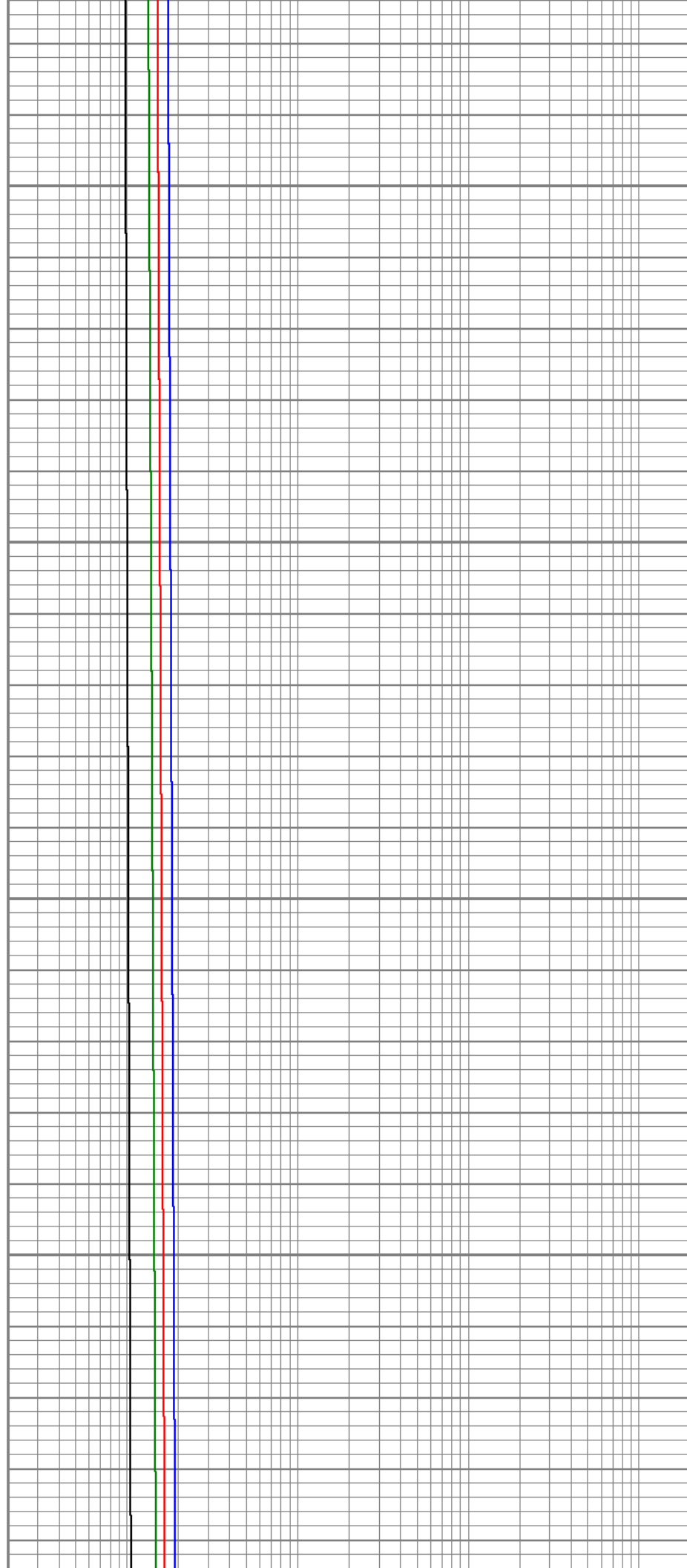


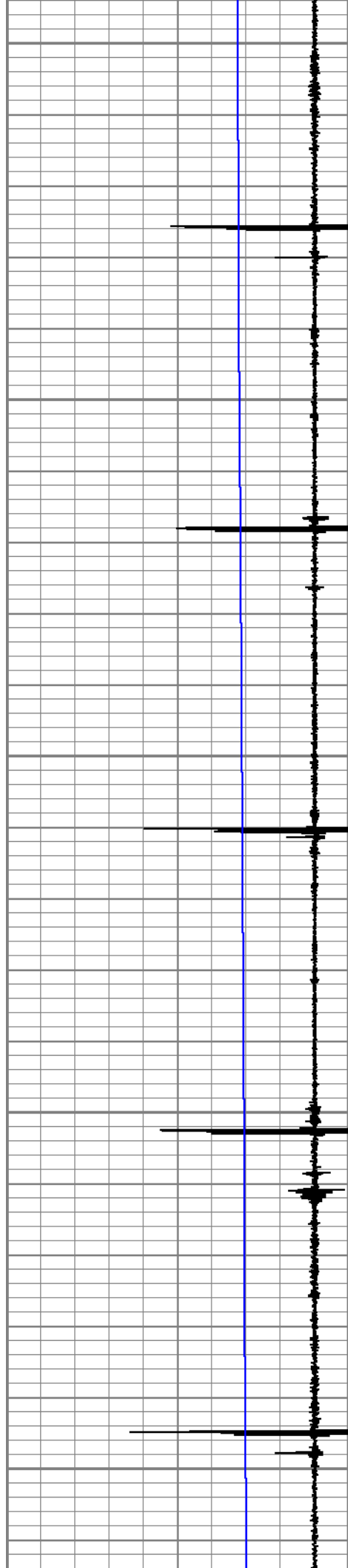
4250

4300

4350

4400





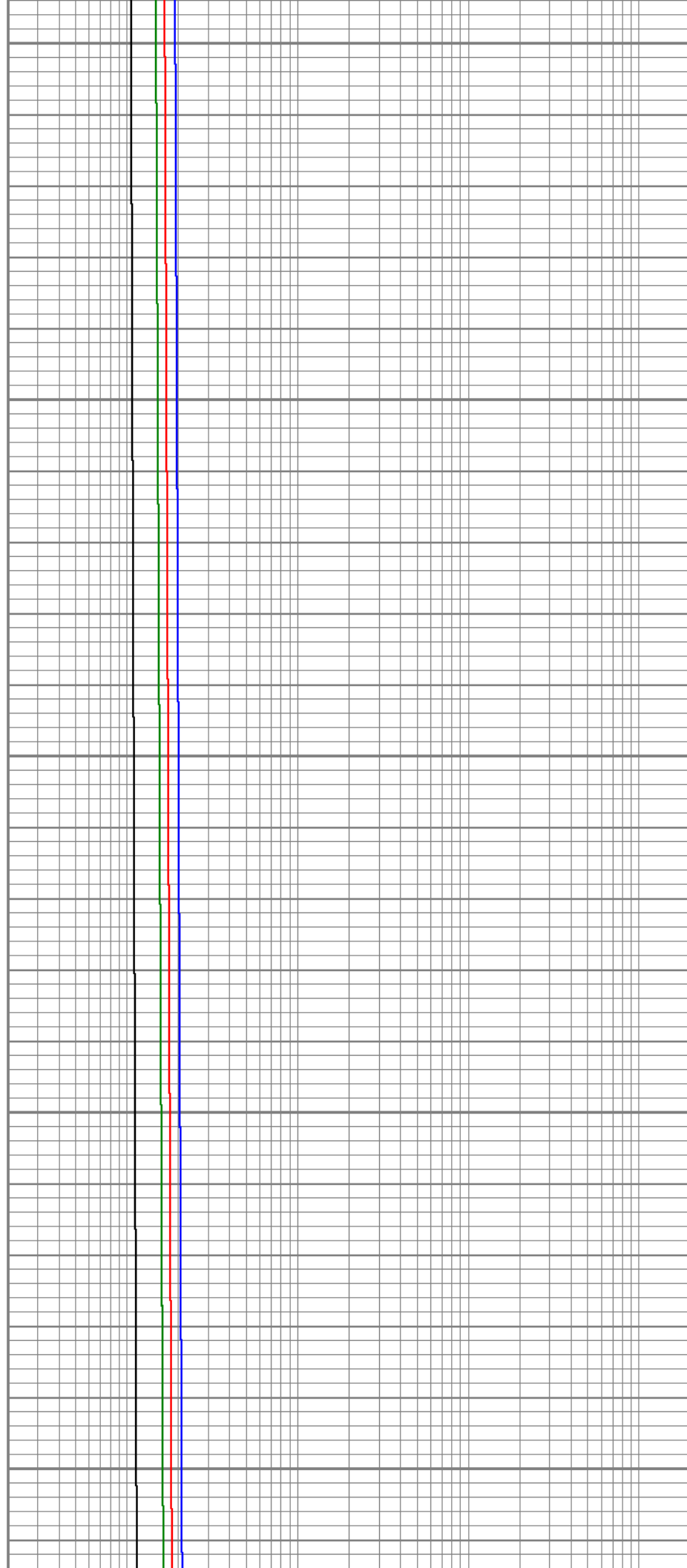
4450

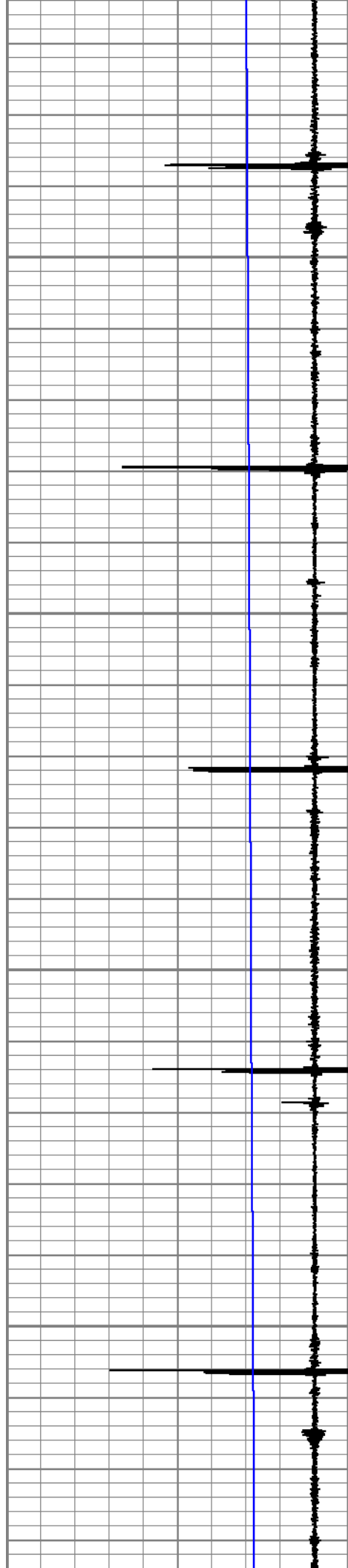
4500

4550

4600

4650



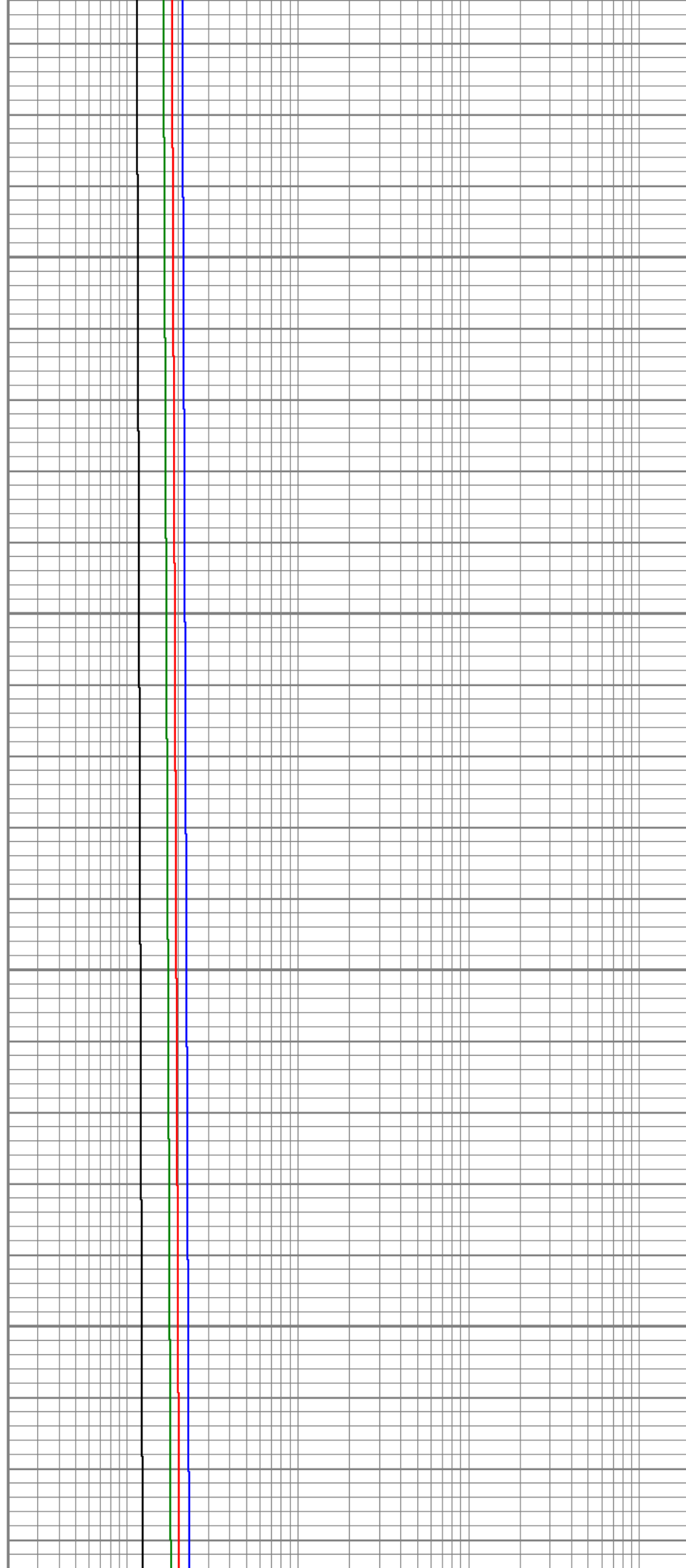


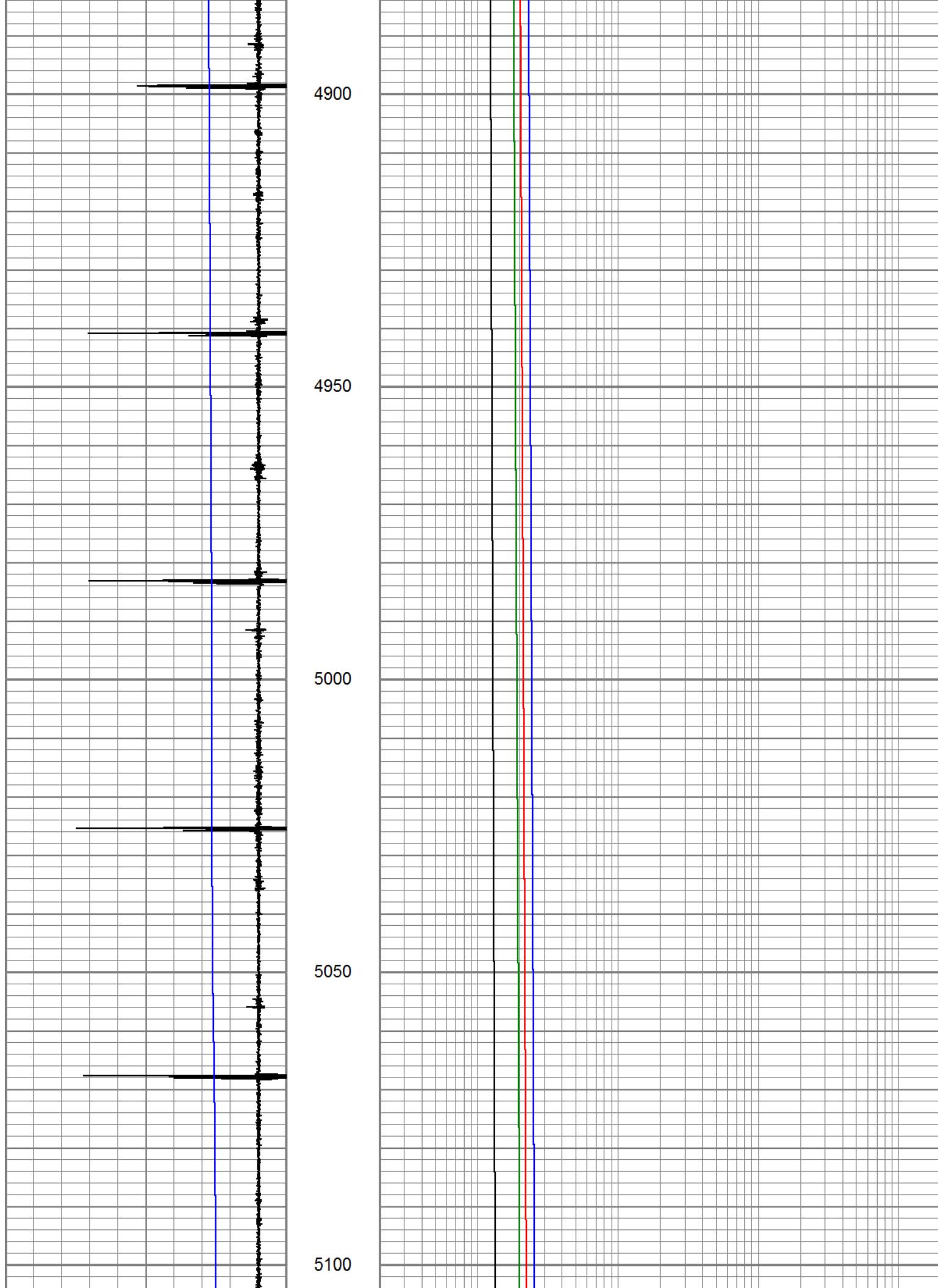
4700

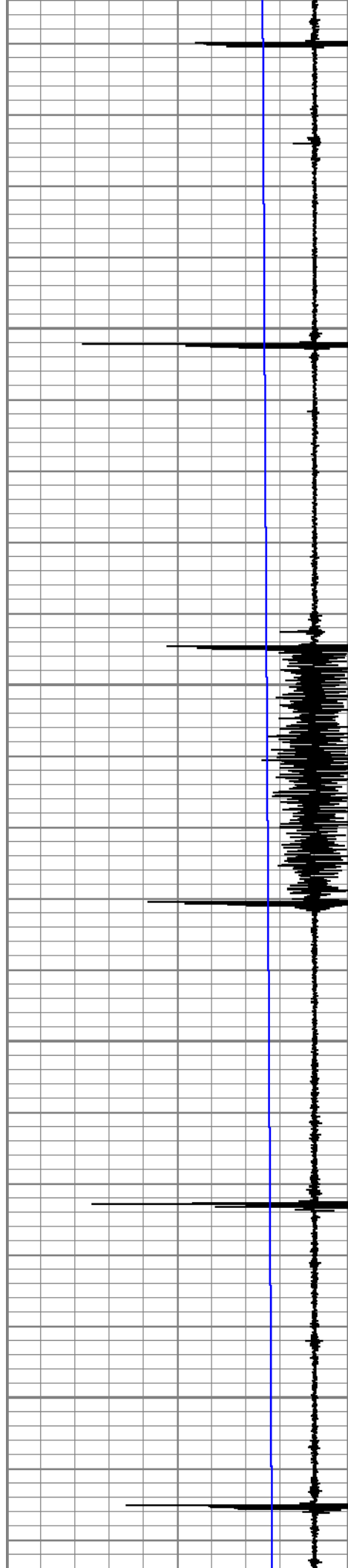
4750

4800

4850





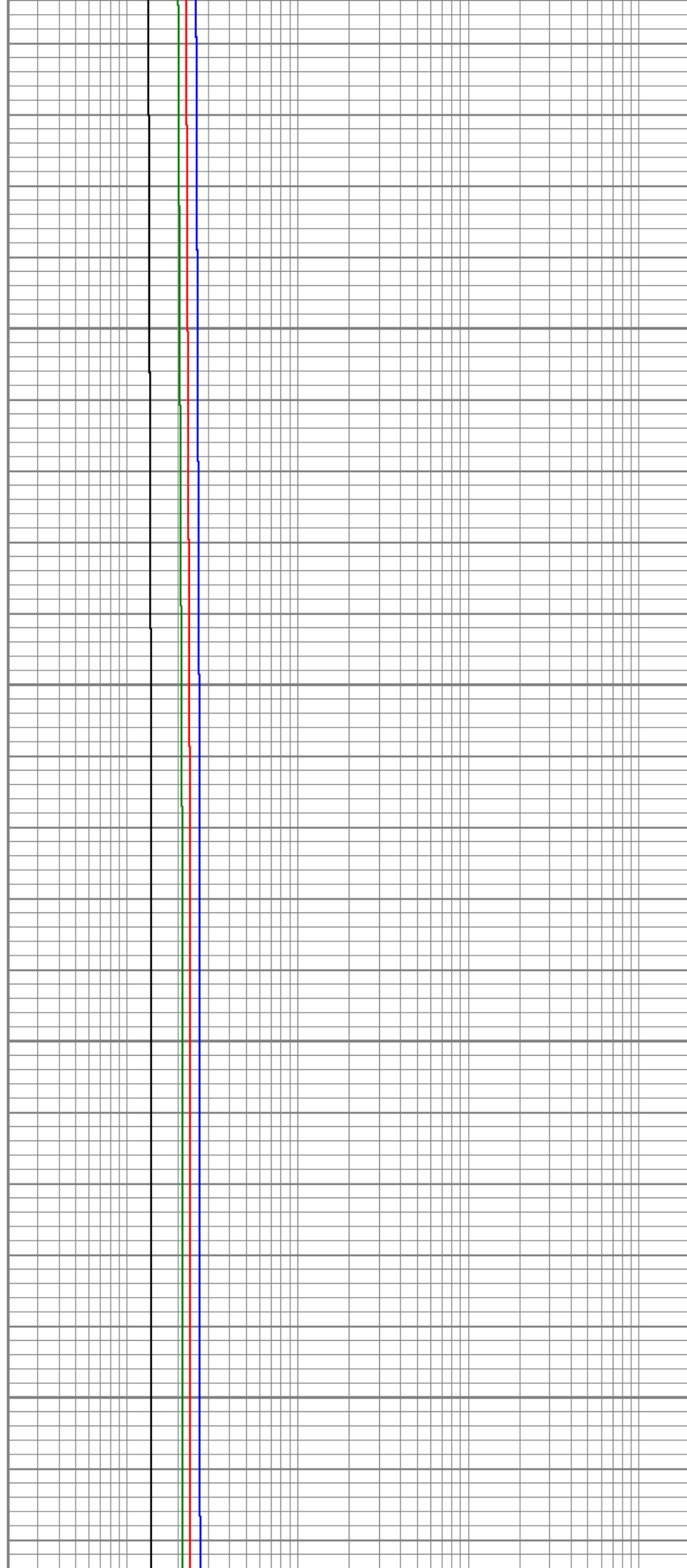


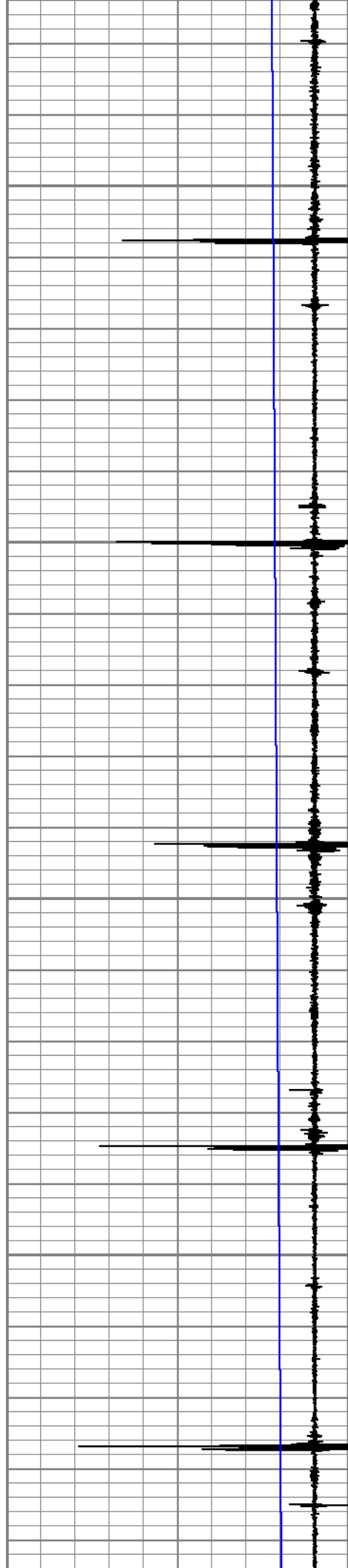
5150

5200

5250

5300



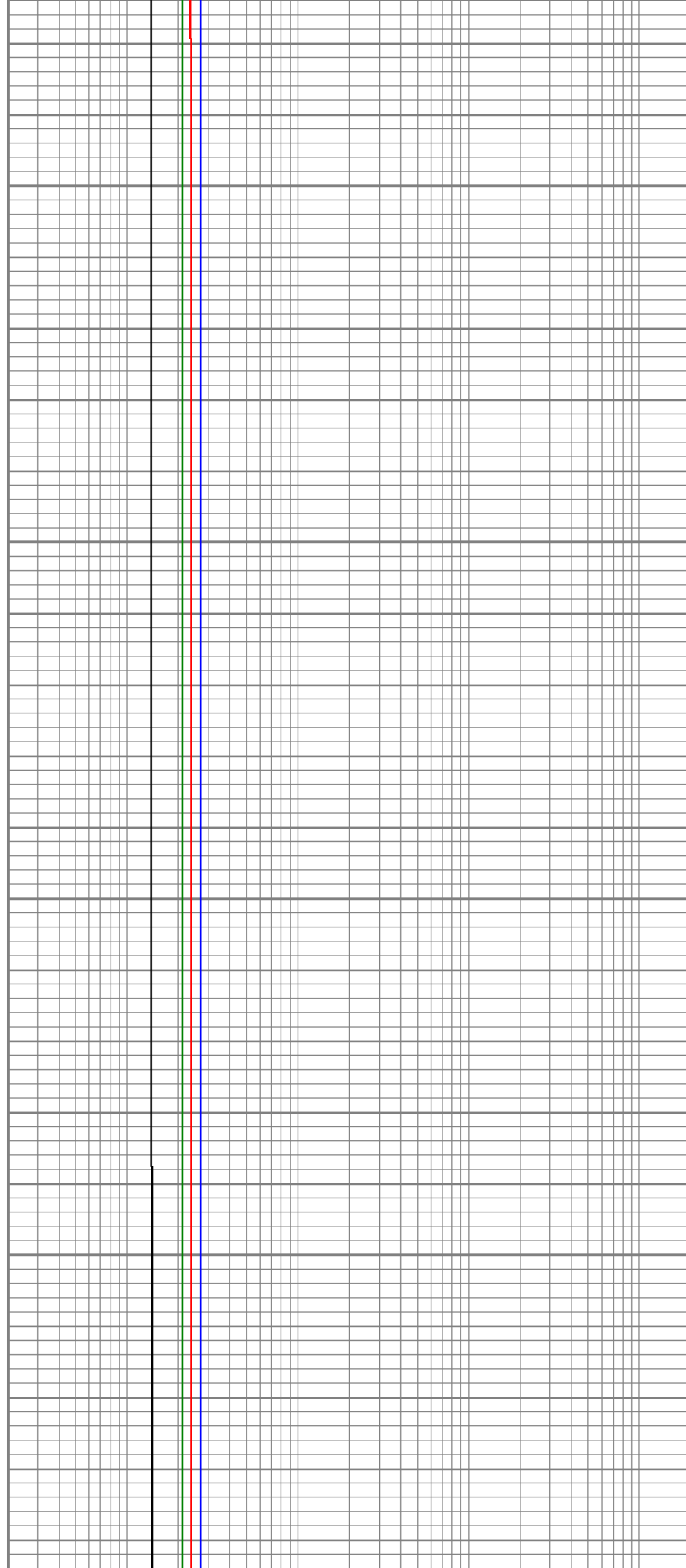


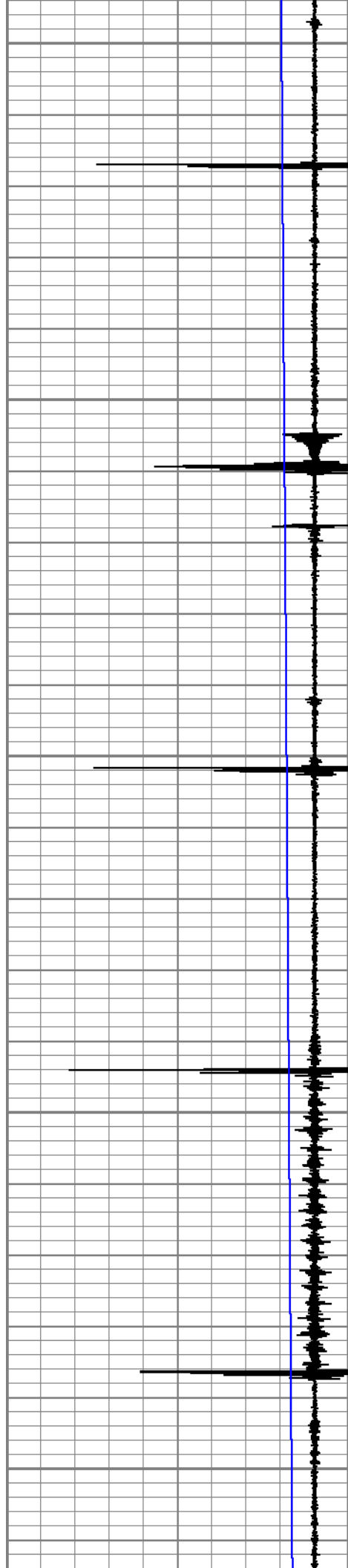
5350

5400

5450

5500





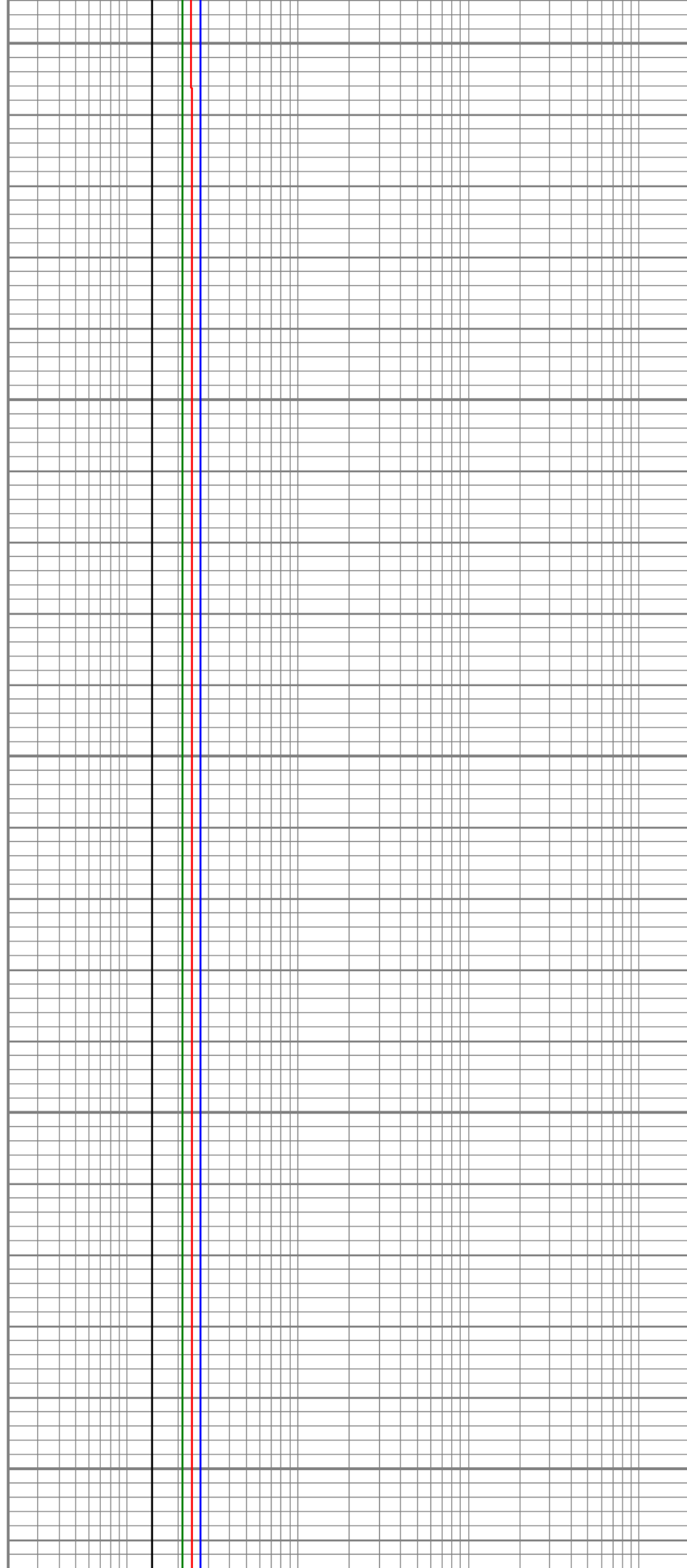
5550

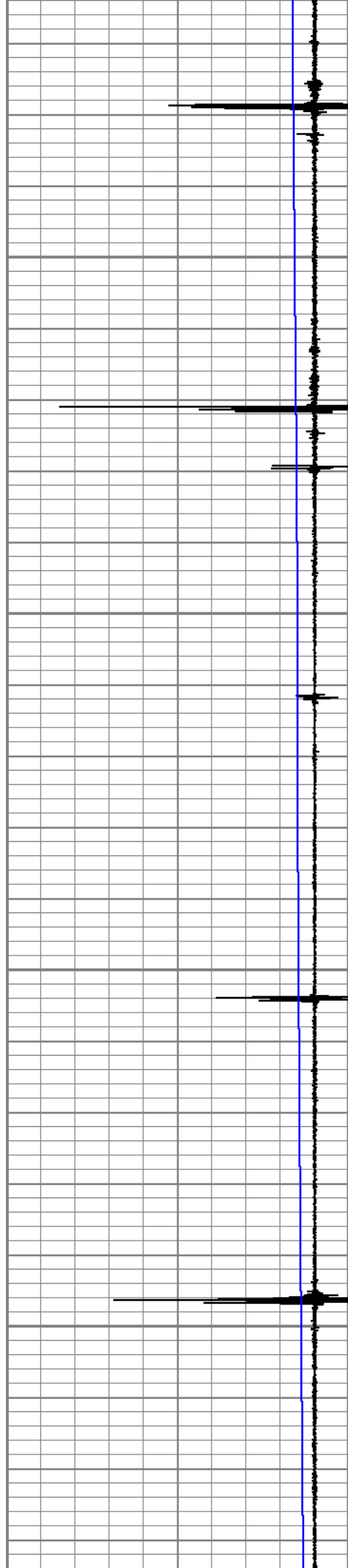
5600

5650

5700

5750



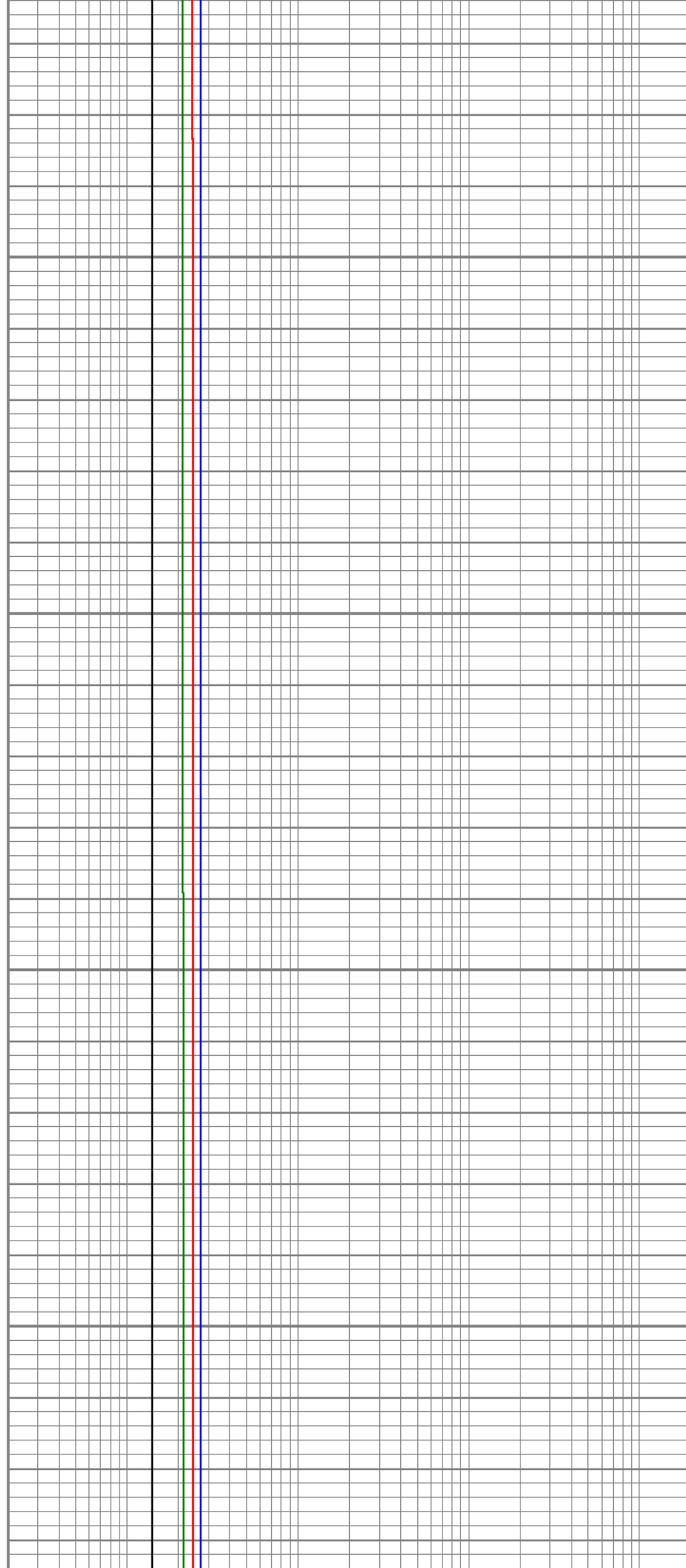


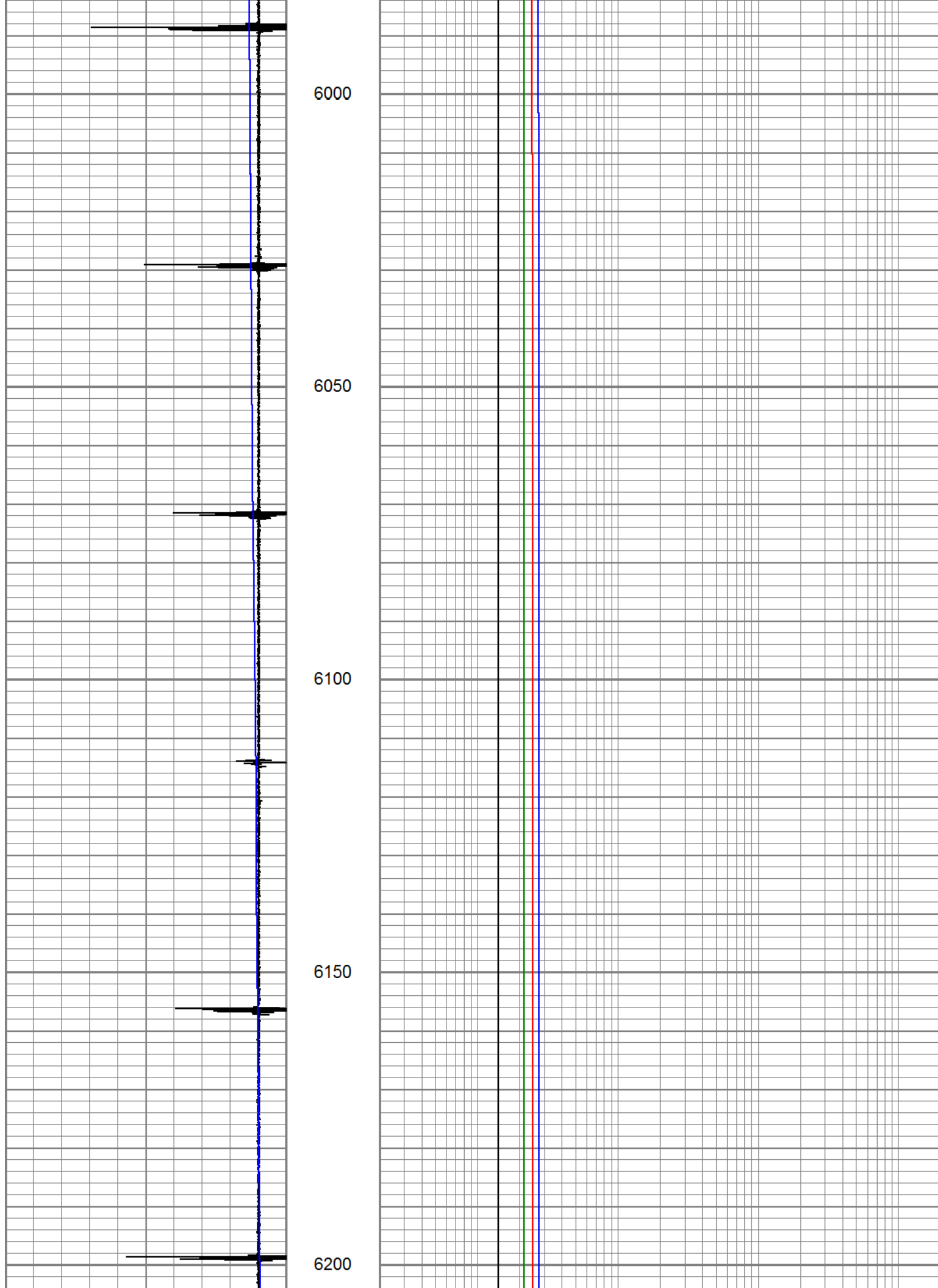
5800

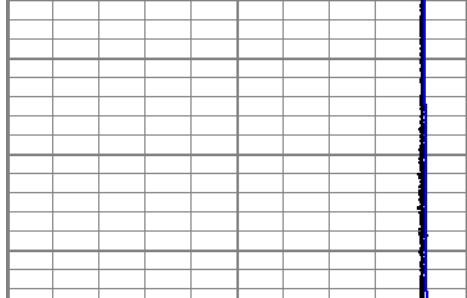
5850

5900

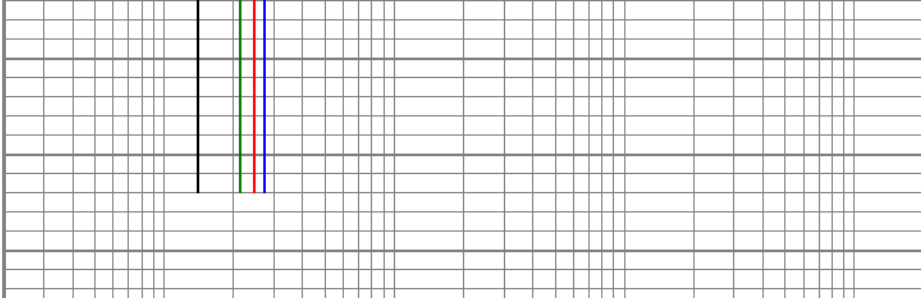
5950








-9	CCL	1
25	TEMP (degF)	225



2	2000HZ (mV)	20000
2	1000HZ (mV)	20000
2	600HZ (mV)	20000
2	200HZ (mV)	20000

	<table><tr><td>Company</td><td>K.P. KAUFMANN</td></tr><tr><td>Well</td><td>MAUL 20-2</td></tr><tr><td>Field</td><td>WATTENBERG</td></tr><tr><td>County</td><td>WELD</td></tr><tr><td>State</td><td>COLORADO</td></tr></table>	Company	K.P. KAUFMANN	Well	MAUL 20-2	Field	WATTENBERG	County	WELD	State	COLORADO
Company	K.P. KAUFMANN										
Well	MAUL 20-2										
Field	WATTENBERG										
County	WELD										
State	COLORADO										