

BONANZA CREEK OIL COMPANY

Location: COLORADO Slot: SLOT#13 STATE NORTH PLATTE 11-36-1XRLC (298'FNL & 640'FWL, SEC.36)
Field: WELD COUNTY Well: STATE NORTH PLATTE 11-36-1XRLC
Facility: SEC.36-T5N-R63W Wellbore: STATE NORTH PLATTE 11-36-1XRLC PWB

| | |
|--|--|
| Plot reference wellpath is STATE NORTH PLATTE 11-36-1XRLC (REV-AU) PWB | Grid System: NAD83 / Lambert Colorado SP, Northern Zone (501), US feet |
| True vertical depths are referenced to RIG (17) (RKB) | North Reference: True north |
| Measured depths are referenced to RIG (17) (RKB) | Scale: True distance |
| RIG (17) (RKB) to Mean Sea Level: 4560 feet | Depths are in feet |
| Mean Sea Level to Ground level (At Slot: SLOT#13 STATE NORTH PLATTE 11-36-1XRLC (298'FNL & 640'FWL, SEC.36)): 0 feet | Created by: doddanna on 2018-09-12 |
| Coordinates are in feet referenced to Slot | Database: WellArchitectDB2 |

Location Information

| Facility Name | | | | Grid East (US Ft) | Grid North (US Ft) | Latitude | Longitude |
|---|--------------|--------------|-------------------|--------------------|--------------------|-----------------|-----------------|
| SEC.36-T5N-R63W | | | | 3308733.906 | 1376726.042 | 40°21'43.992"N | 104°23'31.452"W |
| Slot | Local N (ft) | Local E (ft) | Grid East (US Ft) | Grid North (US Ft) | Latitude | Longitude | |
| SLOT#13 STATE NORTH PLATTE 11-36-1XRLC (298'FNL & 640'FWL, SEC.36) | 54.65 | 117.35 | 3308850.563 | 1376782.148 | 40°21'44.532"N | 104°23'29.936"W | |
| RIG (17) (R98B) to Ground level (At Slot: SLOT#13 STATE NORTH PLATTE 11-36-1XRLC (298'FNL & 640'FWL, SEC.36)) | | | | | | 4560ft | |
| Mean Sea Level to Ground level (At Slot: SLOT#13 STATE NORTH PLATTE 11-36-1XRLC (298'FNL & 640'FWL, SEC.36)) | | | | | | 0ft | |
| RIG (17) (R98B) to Mean Sea Level | | | | | | 4560ft | |

Well Profile Data

| Design Comment | MD (ft) | Inc (°) | Az (°) | TVD (ft) | Local N (ft) | Local E (ft) | DLS (°/100ft) | VS (ft) |
|----------------|----------|---------|---------|----------|--------------|--------------|---------------|---------|
| Tie On | 17.00 | 0.000 | 19.298 | 17.00 | 0.00 | 0.00 | 0.00 | 0.00 |
| End of Tangent | 1550.00 | 0.000 | 19.298 | 1550.00 | 0.00 | 0.00 | 0.00 | 0.00 |
| End of Build | 1793.40 | 4.868 | 19.298 | 1793.10 | 9.75 | 3.42 | 2.00 | -9.76 |
| End of Tangent | 5871.78 | 4.868 | 19.298 | 5856.78 | 336.40 | 117.79 | 0.00 | -336.55 |
| End of 3D Arc | 6819.21 | 90.000 | 186.306 | 6477.00 | -232.45 | 66.88 | 10.00 | 232.36 |
| End of 3D Arc | 11477.40 | 90.000 | 178.602 | 6477.00 | -4882.86 | -132.40 | 0.17 | 4883.03 |
| End of Tangent | 16376.98 | 90.000 | 178.602 | 6477.00 | -9780.98 | -12.86 | 0.00 | 9780.99 |

Hole and Casing Sections

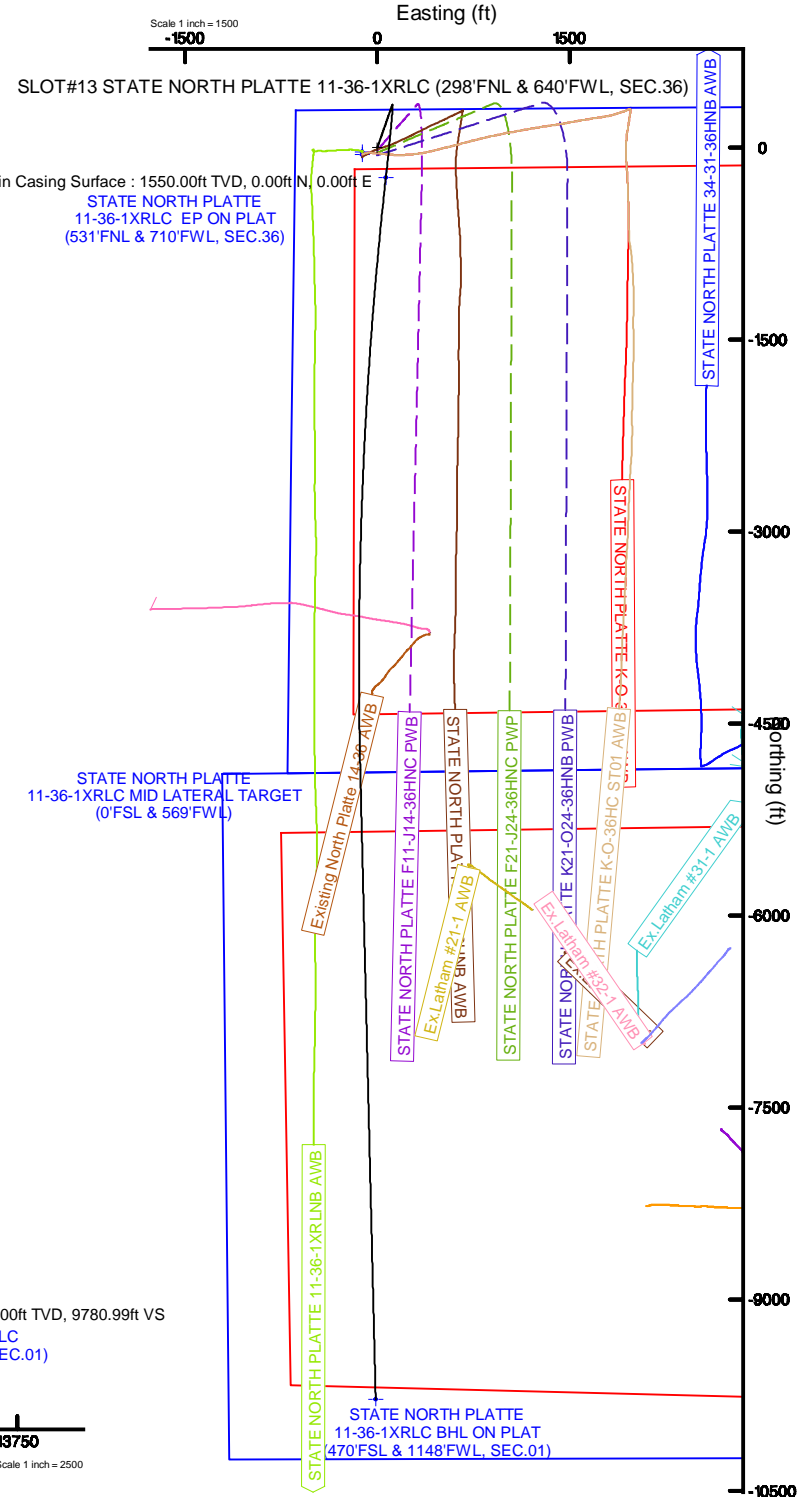
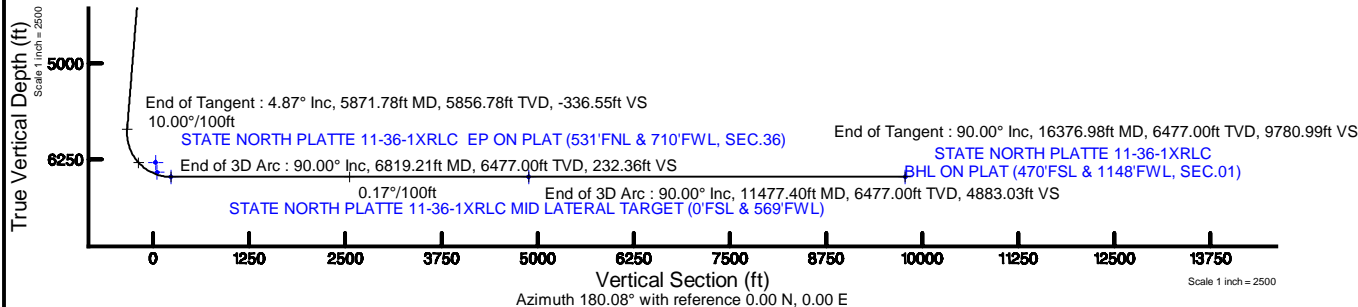
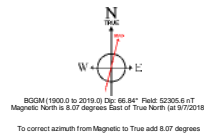
| Name | Start MD (ft) | End MD (ft) | Interval (ft) | Start TVD (ft) | End TVD (ft) | Start Local N (ft) | Start Local E (ft) | End Local N (ft) | End Local E (ft) | Wellbore |
|------------------------|---------------|-------------|---------------|----------------|--------------|--------------------|--------------------|------------------|------------------|------------------------------------|
| 9.625in Casing Surface | 17.00 | 1550.00 | 1533.00 | 17.00 | 1550.00 | 0.00 | 0.00 | 0.00 | 0.00 | STATE NORTH PLATTE 11-36-1XRLC PWB |
| 8.5in Open Hole | 1550.00 | 16376.98 | 14826.98 | 1550.00 | N/A | 0.00 | 0.00 | N/A | N/A | STATE NORTH PLATTE 11-36-1XRLC PWB |

Survey Program

| Start MD (ft) | End MD (ft) | Tool | Model | Log Name/Comment | Wellbore |
|---------------|-------------|--------------------|--|------------------|------------------------------------|
| 17.00 | 1550.00 | BHI NavTrak | BHI NavTrak (Rotating+Axial Corr) | | STATE NORTH PLATTE 11-36-1XRLC PWB |
| 1550.00 | 16376.98 | BHI AutoTrak Curve | BHI AutoTrak Curve (Axial Corr, Short spacing) | | STATE NORTH PLATTE 11-36-1XRLC PWB |

Bottom Hole Location

| MD (ft) | Inc (°) | Az (°) | TVD (ft) | Local N (ft) | Local E (ft) | Grid East (US ft) | Grid North (US ft) | Latitude | Longitude |
|----------|---------|---------|----------|--------------|--------------|-------------------|--------------------|----------------|-----------------|
| 16376.98 | 90.000 | 178.602 | 6477.00 | -9780.98 | -12.86 | 3308959.95 | 1367002.19 | 40°20'07.879"N | 104°23'30.102"W |



Planned Wellpath Report

STATE NORTH PLATTE 11-36-1XRLC (REV-A.0) PWP

Page 1 of 8



REFERENCE WELLPATH IDENTIFICATION

| | | | |
|----------|---------------------------|----------|--|
| Operator | BONANZA CREEK OIL COMPANY | Slot | SLOT#13 STATE NORTH PLATTE 11-36-1XRLC (298'FNL & 640'FWL, SEC.36) |
| Area | COLORADO | Well | STATE NORTH PLATTE 11-36-1XRLC |
| Field | WELD COUNTY | Wellbore | STATE NORTH PLATTE 11-36-1XRLC PWB |
| Facility | SEC.36-T5N-R63W | | |

REPORT SETUP INFORMATION

| | | | |
|---------------------|---|----------------------|---|
| Projection System | NAD83 / Lambert Colorado SP, Northern Zone (501), US feet | Software System | WellArchitect® 5.1 |
| North Reference | True | User | Doddanna |
| Scale | 0.999959 | Report Generated | 9/12/2018 at 9:14:34 AM |
| Convergence at slot | 0.72° East | Database/Source file | WellArchitectDB2/STATE_NORTH_PLATTE_11-36-1XRLC__REV-A.0__PWP.xml |

WELLPATH LOCATION

| | Local coordinates | | Grid coordinates | | Geographic coordinates | |
|-----------------------|-------------------|----------|------------------|-----------------|------------------------|-----------------|
| | North[ft] | East[ft] | Easting[US ft] | Northing[US ft] | Latitude | Longitude |
| Slot Location | 54.65 | 117.35 | 3308850.56 | 1376782.15 | 40°21'44.532"N | 104°23'29.936"W |
| Facility Reference Pt | | | 3308733.91 | 1376726.04 | 40°21'43.992"N | 104°23'31.452"W |
| Field Reference Pt | | | 3224525.77 | 1254425.87 | 40°01'44.400"N | 104°41'53.556"W |

WELLPATH DATUM

| | | | |
|--------------------------|-------------------|--|-------------------|
| Calculation method | Minimum curvature | RIG (17') (RKB) to Facility Vertical Datum | 4560.00ft |
| Horizontal Reference Pt | Slot | RIG (17') (RKB) to Mean Sea Level | 4560.00ft |
| Vertical Reference Pt | RIG (17') (RKB) | RIG (17') (RKB) to Ground Level at Slot (SLOT#13 STATE NORTH PLATTE 11-36-1XRLC (298'FNL & 640'FWL, SEC.36)) | 4560.00ft |
| MD Reference Pt | RIG (17') (RKB) | Section Origin | N 0.00, E 0.00 ft |
| Field Vertical Reference | Mean Sea Level | Section Azimuth | 180.08° |

Planned Wellpath Report

STATE NORTH PLATTE 11-36-1XRLC (REV-A.0) PWP

Page 2 of 8



| REFERENCE WELLPATH IDENTIFICATION | | | |
|-----------------------------------|---------------------------|----------|--|
| Operator | BONANZA CREEK OIL COMPANY | Slot | SLOT#13 STATE NORTH PLATTE 11-36-1XRLC (298'FNL & 640'FWL, SEC.36) |
| Area | COLORADO | Well | STATE NORTH PLATTE 11-36-1XRLC |
| Field | WELD COUNTY | Wellbore | STATE NORTH PLATTE 11-36-1XRLC PWB |
| Facility | SEC.36-T5N-R63W | | |

| WELLPATH DATA (171 stations) † = interpolated/extrapolated station | | | | | | | | |
|--|--------------------|----------------|-------------|-------------------|---------------|--------------|------------------|----------------|
| MD [ft] | Inclination [°] | Azimuth [°] | TVD [ft] | Vert Sect [ft] | North [ft] | East [ft] | DLS [°/100ft] | Comments |
| 0.00† | 0.000 | 19.298 | 0.00 | 0.00 | 0.00 | 0.00 | 0.00 | |
| 17.00 | 0.000 | 19.298 | 17.00 | 0.00 | 0.00 | 0.00 | 0.00 | Tie On |
| 117.00† | 0.000 | 19.298 | 117.00 | 0.00 | 0.00 | 0.00 | 0.00 | |
| 217.00† | 0.000 | 19.298 | 217.00 | 0.00 | 0.00 | 0.00 | 0.00 | |
| 317.00† | 0.000 | 19.298 | 317.00 | 0.00 | 0.00 | 0.00 | 0.00 | |
| 417.00† | 0.000 | 19.298 | 417.00 | 0.00 | 0.00 | 0.00 | 0.00 | |
| 517.00† | 0.000 | 19.298 | 517.00 | 0.00 | 0.00 | 0.00 | 0.00 | |
| 617.00† | 0.000 | 19.298 | 617.00 | 0.00 | 0.00 | 0.00 | 0.00 | |
| 717.00† | 0.000 | 19.298 | 717.00 | 0.00 | 0.00 | 0.00 | 0.00 | |
| 817.00† | 0.000 | 19.298 | 817.00 | 0.00 | 0.00 | 0.00 | 0.00 | |
| 917.00† | 0.000 | 19.298 | 917.00 | 0.00 | 0.00 | 0.00 | 0.00 | |
| 1017.00† | 0.000 | 19.298 | 1017.00 | 0.00 | 0.00 | 0.00 | 0.00 | |
| 1117.00† | 0.000 | 19.298 | 1117.00 | 0.00 | 0.00 | 0.00 | 0.00 | |
| 1217.00† | 0.000 | 19.298 | 1217.00 | 0.00 | 0.00 | 0.00 | 0.00 | |
| 1317.00† | 0.000 | 19.298 | 1317.00 | 0.00 | 0.00 | 0.00 | 0.00 | |
| 1417.00† | 0.000 | 19.298 | 1417.00 | 0.00 | 0.00 | 0.00 | 0.00 | |
| 1517.00† | 0.000 | 19.298 | 1517.00 | 0.00 | 0.00 | 0.00 | 0.00 | |
| 1550.00 | 0.000 | 19.298 | 1550.00 | 0.00 | 0.00 | 0.00 | 0.00 | End of Tangent |
| 1617.00† | 1.340 | 19.298 | 1616.99 | -0.74 | 0.74 | 0.26 | 2.00 | |
| 1717.00† | 3.340 | 19.298 | 1716.91 | -4.59 | 4.59 | 1.61 | 2.00 | |
| 1793.40 | 4.868 | 19.298 | 1793.10 | -9.76 | 9.75 | 3.42 | 2.00 | End of Build |
| 1817.00† | 4.868 | 19.298 | 1816.62 | -11.65 | 11.64 | 4.08 | 0.00 | |
| 1917.00† | 4.868 | 19.298 | 1916.26 | -19.66 | 19.65 | 6.88 | 0.00 | |
| 2017.00† | 4.868 | 19.298 | 2015.90 | -27.67 | 27.66 | 9.69 | 0.00 | |
| 2117.00† | 4.868 | 19.298 | 2115.54 | -35.69 | 35.67 | 12.49 | 0.00 | |
| 2217.00† | 4.868 | 19.298 | 2215.18 | -43.70 | 43.68 | 15.29 | 0.00 | |
| 2317.00† | 4.868 | 19.298 | 2314.82 | -51.71 | 51.69 | 18.10 | 0.00 | |
| 2417.00† | 4.868 | 19.298 | 2414.46 | -59.73 | 59.70 | 20.90 | 0.00 | |
| 2517.00† | 4.868 | 19.298 | 2514.10 | -67.74 | 67.71 | 23.71 | 0.00 | |
| 2617.00† | 4.868 | 19.298 | 2613.74 | -75.75 | 75.72 | 26.51 | 0.00 | |

Planned Wellpath Report

STATE NORTH PLATTE 11-36-1XRLC (REV-A.0) PWP

Page 3 of 8



| REFERENCE WELLPATH IDENTIFICATION | | | |
|-----------------------------------|---------------------------|----------|--|
| Operator | BONANZA CREEK OIL COMPANY | Slot | SLOT#13 STATE NORTH PLATTE 11-36-1XRLC (298'FNL & 640'FWL, SEC.36) |
| Area | COLORADO | Well | STATE NORTH PLATTE 11-36-1XRLC |
| Field | WELD COUNTY | Wellbore | STATE NORTH PLATTE 11-36-1XRLC PWB |
| Facility | SEC.36-T5N-R63W | | |

| WELLPATH DATA (171 stations) † = interpolated/extrapolated station | | | | | | | | |
|--|--------------------|----------------|-------------|-------------------|---------------|--------------|------------------|----------|
| MD [ft] | Inclination [°] | Azimuth [°] | TVD [ft] | Vert Sect [ft] | North [ft] | East [ft] | DLS [°/100ft] | Comments |
| 2717.00† | 4.868 | 19.298 | 2713.38 | -83.76 | 83.73 | 29.32 | 0.00 | |
| 2817.00† | 4.868 | 19.298 | 2813.02 | -91.78 | 91.73 | 32.12 | 0.00 | |
| 2917.00† | 4.868 | 19.298 | 2912.65 | -99.79 | 99.74 | 34.93 | 0.00 | |
| 3017.00† | 4.868 | 19.298 | 3012.29 | -107.80 | 107.75 | 37.73 | 0.00 | |
| 3117.00† | 4.868 | 19.298 | 3111.93 | -115.82 | 115.76 | 40.54 | 0.00 | |
| 3217.00† | 4.868 | 19.298 | 3211.57 | -123.83 | 123.77 | 43.34 | 0.00 | |
| 3317.00† | 4.868 | 19.298 | 3311.21 | -131.84 | 131.78 | 46.14 | 0.00 | |
| 3417.00† | 4.868 | 19.298 | 3410.85 | -139.85 | 139.79 | 48.95 | 0.00 | |
| 3517.00† | 4.868 | 19.298 | 3510.49 | -147.87 | 147.80 | 51.75 | 0.00 | |
| 3617.00† | 4.868 | 19.298 | 3610.13 | -155.88 | 155.81 | 54.56 | 0.00 | |
| 3717.00† | 4.868 | 19.298 | 3709.77 | -163.89 | 163.82 | 57.36 | 0.00 | |
| 3817.00† | 4.868 | 19.298 | 3809.41 | -171.90 | 171.83 | 60.17 | 0.00 | |
| 3917.00† | 4.868 | 19.298 | 3909.05 | -179.92 | 179.83 | 62.97 | 0.00 | |
| 4017.00† | 4.868 | 19.298 | 4008.69 | -187.93 | 187.84 | 65.78 | 0.00 | |
| 4117.00† | 4.868 | 19.298 | 4108.33 | -195.94 | 195.85 | 68.58 | 0.00 | |
| 4217.00† | 4.868 | 19.298 | 4207.97 | -203.96 | 203.86 | 71.38 | 0.00 | |
| 4317.00† | 4.868 | 19.298 | 4307.60 | -211.97 | 211.87 | 74.19 | 0.00 | |
| 4417.00† | 4.868 | 19.298 | 4407.24 | -219.98 | 219.88 | 76.99 | 0.00 | |
| 4517.00† | 4.868 | 19.298 | 4506.88 | -227.99 | 227.89 | 79.80 | 0.00 | |
| 4617.00† | 4.868 | 19.298 | 4606.52 | -236.01 | 235.90 | 82.60 | 0.00 | |
| 4717.00† | 4.868 | 19.298 | 4706.16 | -244.02 | 243.91 | 85.41 | 0.00 | |
| 4817.00† | 4.868 | 19.298 | 4805.80 | -252.03 | 251.92 | 88.21 | 0.00 | |
| 4917.00† | 4.868 | 19.298 | 4905.44 | -260.05 | 259.93 | 91.02 | 0.00 | |
| 5017.00† | 4.868 | 19.298 | 5005.08 | -268.06 | 267.94 | 93.82 | 0.00 | |
| 5117.00† | 4.868 | 19.298 | 5104.72 | -276.07 | 275.94 | 96.62 | 0.00 | |
| 5217.00† | 4.868 | 19.298 | 5204.36 | -284.08 | 283.95 | 99.43 | 0.00 | |
| 5317.00† | 4.868 | 19.298 | 5304.00 | -292.10 | 291.96 | 102.23 | 0.00 | |
| 5417.00† | 4.868 | 19.298 | 5403.64 | -300.11 | 299.97 | 105.04 | 0.00 | |
| 5517.00† | 4.868 | 19.298 | 5503.28 | -308.12 | 307.98 | 107.84 | 0.00 | |
| 5617.00† | 4.868 | 19.298 | 5602.92 | -316.14 | 315.99 | 110.65 | 0.00 | |

Planned Wellpath Report

STATE NORTH PLATTE 11-36-1XRLC (REV-A.0) PWP

Page 4 of 8



| REFERENCE WELLPATH IDENTIFICATION | | | |
|-----------------------------------|---------------------------|----------|--|
| Operator | BONANZA CREEK OIL COMPANY | Slot | SLOT#13 STATE NORTH PLATTE 11-36-1XRLC (298'FNL & 640'FWL, SEC.36) |
| Area | COLORADO | Well | STATE NORTH PLATTE 11-36-1XRLC |
| Field | WELD COUNTY | Wellbore | STATE NORTH PLATTE 11-36-1XRLC PWB |
| Facility | SEC.36-T5N-R63W | | |

| WELLPATH DATA (171 stations) † = interpolated/extrapolated station | | | | | | | | |
|--|--------------------|----------------|-------------|-------------------|---------------|--------------|------------------|----------------|
| MD [ft] | Inclination [°] | Azimuth [°] | TVD [ft] | Vert Sect [ft] | North [ft] | East [ft] | DLS [°/100ft] | Comments |
| 5717.00† | 4.868 | 19.298 | 5702.55 | -324.15 | 324.00 | 113.45 | 0.00 | |
| 5817.00† | 4.868 | 19.298 | 5802.19 | -332.16 | 332.01 | 116.26 | 0.00 | |
| 5871.78 | 4.868 | 19.298 | 5856.78 | -336.55 | 336.40 | 117.79 | 0.00 | End of Tangent |
| 5917.00† | 1.119 | 84.895 | 5901.93 | -338.40 | 338.25 | 118.87 | 10.00 | |
| 6017.00† | 9.839 | 179.967 | 6001.44 | -329.93 | 329.77 | 119.85 | 10.00 | |
| 6117.00† | 19.808 | 183.258 | 6097.99 | -304.40 | 304.24 | 118.89 | 10.00 | |
| 6217.00† | 29.797 | 184.389 | 6188.65 | -262.60 | 262.45 | 116.01 | 10.00 | |
| 6317.00† | 39.791 | 184.988 | 6270.67 | -205.80 | 205.65 | 111.32 | 10.00 | |
| 6417.00† | 49.788 | 185.378 | 6341.55 | -135.72 | 135.58 | 104.94 | 10.00 | |
| 6517.00† | 59.785 | 185.667 | 6399.14 | -54.49 | 54.36 | 97.08 | 10.00 | |
| 6617.00† | 69.782 | 185.902 | 6441.69 | 35.42 | -35.53 | 87.96 | 10.00 | |
| 6717.00† | 79.781 | 186.108 | 6467.91 | 131.27 | -131.37 | 77.88 | 10.00 | |
| 6817.00† | 89.779 | 186.301 | 6477.00 | 230.16 | -230.25 | 67.13 | 10.00 | |
| 6819.21 | 90.000 | 186.306 | 6477.00† | 232.36 | -232.45 | 66.88 | 10.00 | End of 3D Arc |
| 6917.00† | 90.000 | 186.144 | 6477.00 | 329.59 | -329.66 | 56.28 | 0.17 | |
| 7017.00† | 90.000 | 185.978 | 6477.00 | 429.04 | -429.10 | 45.72 | 0.17 | |
| 7117.00† | 90.000 | 185.813 | 6477.00 | 528.52 | -528.57 | 35.45 | 0.17 | |
| 7217.00† | 90.000 | 185.648 | 6477.00 | 628.04 | -628.07 | 25.46 | 0.17 | |
| 7317.00† | 90.000 | 185.482 | 6477.00 | 727.58 | -727.60 | 15.77 | 0.17 | |
| 7417.00† | 90.000 | 185.317 | 6477.00 | 827.15 | -827.16 | 6.36 | 0.17 | |
| 7517.00† | 90.000 | 185.152 | 6477.00 | 926.74 | -926.74 | -2.77 | 0.17 | |
| 7617.00† | 90.000 | 184.986 | 6477.00 | 1026.36 | -1026.35 | -11.60 | 0.17 | |
| 7717.00† | 90.000 | 184.821 | 6477.00 | 1126.01 | -1125.98 | -20.15 | 0.17 | |
| 7817.00† | 90.000 | 184.655 | 6477.00 | 1225.68 | -1225.64 | -28.41 | 0.17 | |
| 7917.00† | 90.000 | 184.490 | 6477.00 | 1325.37 | -1325.32 | -36.38 | 0.17 | |
| 8017.00† | 90.000 | 184.325 | 6477.00 | 1425.08 | -1425.03 | -44.07 | 0.17 | |
| 8117.00† | 90.000 | 184.159 | 6477.00 | 1524.82 | -1524.75 | -51.46 | 0.17 | |
| 8217.00† | 90.000 | 183.994 | 6477.00 | 1624.57 | -1624.50 | -58.57 | 0.17 | |
| 8317.00† | 90.000 | 183.829 | 6477.00 | 1724.35 | -1724.27 | -65.39 | 0.17 | |
| 8417.00† | 90.000 | 183.663 | 6477.00 | 1824.15 | -1824.05 | -71.93 | 0.17 | |

Planned Wellpath Report

STATE NORTH PLATTE 11-36-1XRLC (REV-A.0) PWP

Page 5 of 8



| REFERENCE WELLPATH IDENTIFICATION | | | |
|-----------------------------------|---------------------------|----------|--|
| Operator | BONANZA CREEK OIL COMPANY | Slot | SLOT#13 STATE NORTH PLATTE 11-36-1XRLC (298'FNL & 640'FWL, SEC.36) |
| Area | COLORADO | Well | STATE NORTH PLATTE 11-36-1XRLC |
| Field | WELD COUNTY | Wellbore | STATE NORTH PLATTE 11-36-1XRLC PWB |
| Facility | SEC.36-T5N-R63W | | |

| WELLPATH DATA (171 stations) † = interpolated/extrapolated station | | | | | | | | |
|--|--------------------|----------------|-------------|-------------------|---------------|--------------|------------------|----------|
| MD [ft] | Inclination [°] | Azimuth [°] | TVD [ft] | Vert Sect [ft] | North [ft] | East [ft] | DLS [°/100ft] | Comments |
| 8517.00† | 90.000 | 183.498 | 6477.00 | 1923.96 | -1923.86 | -78.17 | 0.17 | |
| 8617.00† | 90.000 | 183.332 | 6477.00 | 2023.79 | -2023.68 | -84.13 | 0.17 | |
| 8717.00† | 90.000 | 183.167 | 6477.00 | 2123.64 | -2123.52 | -89.80 | 0.17 | |
| 8817.00† | 90.000 | 183.002 | 6477.00 | 2223.50 | -2223.37 | -95.18 | 0.17 | |
| 8917.00† | 90.000 | 182.836 | 6477.00 | 2323.37 | -2323.24 | -100.27 | 0.17 | |
| 9017.00† | 90.000 | 182.671 | 6477.00 | 2423.26 | -2423.13 | -105.07 | 0.17 | |
| 9117.00† | 90.000 | 182.506 | 6477.00 | 2523.17 | -2523.03 | -109.59 | 0.17 | |
| 9217.00† | 90.000 | 182.340 | 6477.00 | 2623.08 | -2622.94 | -113.82 | 0.17 | |
| 9317.00† | 90.000 | 182.175 | 6477.00 | 2723.01 | -2722.86 | -117.76 | 0.17 | |
| 9417.00† | 90.000 | 182.009 | 6477.00 | 2822.95 | -2822.79 | -121.41 | 0.17 | |
| 9517.00† | 90.000 | 181.844 | 6477.00 | 2922.90 | -2922.74 | -124.77 | 0.17 | |
| 9617.00† | 90.000 | 181.679 | 6477.00 | 3022.85 | -3022.69 | -127.84 | 0.17 | |
| 9717.00† | 90.000 | 181.513 | 6477.00 | 3122.82 | -3122.65 | -130.63 | 0.17 | |
| 9817.00† | 90.000 | 181.348 | 6477.00 | 3222.79 | -3222.62 | -133.12 | 0.17 | |
| 9917.00† | 90.000 | 181.182 | 6477.00 | 3322.77 | -3322.59 | -135.33 | 0.17 | |
| 10017.00† | 90.000 | 181.017 | 6477.00 | 3422.75 | -3422.58 | -137.25 | 0.17 | |
| 10117.00† | 90.000 | 180.852 | 6477.00 | 3522.74 | -3522.56 | -138.88 | 0.17 | |
| 10217.00† | 90.000 | 180.686 | 6477.00 | 3622.74 | -3622.55 | -140.23 | 0.17 | |
| 10317.00† | 90.000 | 180.521 | 6477.00 | 3722.73 | -3722.55 | -141.28 | 0.17 | |
| 10417.00† | 90.000 | 180.356 | 6477.00 | 3822.73 | -3822.55 | -142.04 | 0.17 | |
| 10517.00† | 90.000 | 180.190 | 6477.00 | 3922.73 | -3922.54 | -142.52 | 0.17 | |
| 10617.00† | 90.000 | 180.025 | 6477.00 | 4022.73 | -4022.54 | -142.71 | 0.17 | |
| 10717.00† | 90.000 | 179.859 | 6477.00 | 4122.73 | -4122.54 | -142.61 | 0.17 | |
| 10817.00† | 90.000 | 179.694 | 6477.00 | 4222.73 | -4222.54 | -142.22 | 0.17 | |
| 10917.00† | 90.000 | 179.529 | 6477.00 | 4322.72 | -4322.54 | -141.54 | 0.17 | |
| 11017.00† | 90.000 | 179.363 | 6477.00 | 4422.72 | -4422.54 | -140.57 | 0.17 | |
| 11117.00† | 90.000 | 179.198 | 6477.00 | 4522.71 | -4522.53 | -139.32 | 0.17 | |
| 11217.00† | 90.000 | 179.033 | 6477.00 | 4622.69 | -4622.52 | -137.77 | 0.17 | |
| 11317.00† | 90.000 | 178.867 | 6477.00 | 4722.67 | -4722.50 | -135.94 | 0.17 | |
| 11417.00† | 90.000 | 178.702 | 6477.00 | 4822.65 | -4822.48 | -133.82 | 0.17 | |

Planned Wellpath Report

STATE NORTH PLATTE 11-36-1XRLC (REV-A.0) PWP

Page 6 of 8



| REFERENCE WELLPATH IDENTIFICATION | | | |
|-----------------------------------|---------------------------|----------|--|
| Operator | BONANZA CREEK OIL COMPANY | Slot | SLOT#13 STATE NORTH PLATTE 11-36-1XRLC (298'FNL & 640'FWL, SEC.36) |
| Area | COLORADO | Well | STATE NORTH PLATTE 11-36-1XRLC |
| Field | WELD COUNTY | Wellbore | STATE NORTH PLATTE 11-36-1XRLC PWB |
| Facility | SEC.36-T5N-R63W | | |

| WELLPATH DATA (171 stations) † = interpolated/extrapolated station | | | | | | | | |
|--|--------------------|----------------|----------------------|-------------------|---------------|--------------|------------------|---------------|
| MD [ft] | Inclination [°] | Azimuth [°] | TVD [ft] | Vert Sect [ft] | North [ft] | East [ft] | DLS [°/100ft] | Comments |
| 11477.40 | 90.000 | 178.602 | 6477.00 ² | 4883.03 | -4882.86 | -132.40 | 0.17 | End of 3D Arc |
| 11517.00† | 90.000 | 178.602 | 6477.00 | 4922.62 | -4922.45 | -131.43 | 0.00 | |
| 11617.00† | 90.000 | 178.602 | 6477.00 | 5022.58 | -5022.42 | -128.99 | 0.00 | |
| 11717.00† | 90.000 | 178.602 | 6477.00 | 5122.55 | -5122.39 | -126.55 | 0.00 | |
| 11817.00† | 90.000 | 178.602 | 6477.00 | 5222.52 | -5222.36 | -124.11 | 0.00 | |
| 11917.00† | 90.000 | 178.602 | 6477.00 | 5322.48 | -5322.33 | -121.67 | 0.00 | |
| 12017.00† | 90.000 | 178.602 | 6477.00 | 5422.45 | -5422.30 | -119.23 | 0.00 | |
| 12117.00† | 90.000 | 178.602 | 6477.00 | 5522.42 | -5522.27 | -116.79 | 0.00 | |
| 12217.00† | 90.000 | 178.602 | 6477.00 | 5622.39 | -5622.24 | -114.35 | 0.00 | |
| 12317.00† | 90.000 | 178.602 | 6477.00 | 5722.35 | -5722.21 | -111.91 | 0.00 | |
| 12417.00† | 90.000 | 178.602 | 6477.00 | 5822.32 | -5822.18 | -109.47 | 0.00 | |
| 12517.00† | 90.000 | 178.602 | 6477.00 | 5922.29 | -5922.15 | -107.03 | 0.00 | |
| 12617.00† | 90.000 | 178.602 | 6477.00 | 6022.25 | -6022.12 | -104.59 | 0.00 | |
| 12717.00† | 90.000 | 178.602 | 6477.00 | 6122.22 | -6122.09 | -102.15 | 0.00 | |
| 12817.00† | 90.000 | 178.602 | 6477.00 | 6222.19 | -6222.06 | -99.71 | 0.00 | |
| 12917.00† | 90.000 | 178.602 | 6477.00 | 6322.15 | -6322.03 | -97.27 | 0.00 | |
| 13017.00† | 90.000 | 178.602 | 6477.00 | 6422.12 | -6422.00 | -94.83 | 0.00 | |
| 13117.00† | 90.000 | 178.602 | 6477.00 | 6522.09 | -6521.97 | -92.39 | 0.00 | |
| 13217.00† | 90.000 | 178.602 | 6477.00 | 6622.05 | -6621.94 | -89.95 | 0.00 | |
| 13317.00† | 90.000 | 178.602 | 6477.00 | 6722.02 | -6721.91 | -87.51 | 0.00 | |
| 13417.00† | 90.000 | 178.602 | 6477.00 | 6821.99 | -6821.88 | -85.07 | 0.00 | |
| 13517.00† | 90.000 | 178.602 | 6477.00 | 6921.96 | -6921.85 | -82.63 | 0.00 | |
| 13617.00† | 90.000 | 178.602 | 6477.00 | 7021.92 | -7021.82 | -80.19 | 0.00 | |
| 13717.00† | 90.000 | 178.602 | 6477.00 | 7121.89 | -7121.79 | -77.75 | 0.00 | |
| 13817.00† | 90.000 | 178.602 | 6477.00 | 7221.86 | -7221.76 | -75.31 | 0.00 | |
| 13917.00† | 90.000 | 178.602 | 6477.00 | 7321.82 | -7321.73 | -72.88 | 0.00 | |
| 14017.00† | 90.000 | 178.602 | 6477.00 | 7421.79 | -7421.70 | -70.44 | 0.00 | |
| 14117.00† | 90.000 | 178.602 | 6477.00 | 7521.76 | -7521.67 | -68.00 | 0.00 | |
| 14217.00† | 90.000 | 178.602 | 6477.00 | 7621.72 | -7621.64 | -65.56 | 0.00 | |
| 14317.00† | 90.000 | 178.602 | 6477.00 | 7721.69 | -7721.61 | -63.12 | 0.00 | |

Planned Wellpath Report

STATE NORTH PLATTE 11-36-1XRLC (REV-A.0) PWP

Page 7 of 8



| REFERENCE WELLPATH IDENTIFICATION | | | |
|-----------------------------------|---------------------------|----------|--|
| Operator | BONANZA CREEK OIL COMPANY | Slot | SLOT#13 STATE NORTH PLATTE 11-36-1XRLC (298'FNL & 640'FWL, SEC.36) |
| Area | COLORADO | Well | STATE NORTH PLATTE 11-36-1XRLC |
| Field | WELD COUNTY | Wellbore | STATE NORTH PLATTE 11-36-1XRLC PWB |
| Facility | SEC.36-T5N-R63W | | |

| WELLPATH DATA (171 stations) † = interpolated/extrapolated station | | | | | | | | |
|--|--------------------|----------------|----------------------|-------------------|---------------|--------------|------------------|----------------|
| MD [ft] | Inclination [°] | Azimuth [°] | TVD [ft] | Vert Sect [ft] | North [ft] | East [ft] | DLS [°/100ft] | Comments |
| 14417.00† | 90.000 | 178.602 | 6477.00 | 7821.66 | -7821.59 | -60.68 | 0.00 | |
| 14517.00† | 90.000 | 178.602 | 6477.00 | 7921.62 | -7921.56 | -58.24 | 0.00 | |
| 14617.00† | 90.000 | 178.602 | 6477.00 | 8021.59 | -8021.53 | -55.80 | 0.00 | |
| 14717.00† | 90.000 | 178.602 | 6477.00 | 8121.56 | -8121.50 | -53.36 | 0.00 | |
| 14817.00† | 90.000 | 178.602 | 6477.00 | 8221.53 | -8221.47 | -50.92 | 0.00 | |
| 14917.00† | 90.000 | 178.602 | 6477.00 | 8321.49 | -8321.44 | -48.48 | 0.00 | |
| 15017.00† | 90.000 | 178.602 | 6477.00 | 8421.46 | -8421.41 | -46.04 | 0.00 | |
| 15117.00† | 90.000 | 178.602 | 6477.00 | 8521.43 | -8521.38 | -43.60 | 0.00 | |
| 15217.00† | 90.000 | 178.602 | 6477.00 | 8621.39 | -8621.35 | -41.16 | 0.00 | |
| 15317.00† | 90.000 | 178.602 | 6477.00 | 8721.36 | -8721.32 | -38.72 | 0.00 | |
| 15417.00† | 90.000 | 178.602 | 6477.00 | 8821.33 | -8821.29 | -36.28 | 0.00 | |
| 15517.00† | 90.000 | 178.602 | 6477.00 | 8921.29 | -8921.26 | -33.84 | 0.00 | |
| 15617.00† | 90.000 | 178.602 | 6477.00 | 9021.26 | -9021.23 | -31.40 | 0.00 | |
| 15717.00† | 90.000 | 178.602 | 6477.00 | 9121.23 | -9121.20 | -28.96 | 0.00 | |
| 15817.00† | 90.000 | 178.602 | 6477.00 | 9221.20 | -9221.17 | -26.52 | 0.00 | |
| 15917.00† | 90.000 | 178.602 | 6477.00 | 9321.16 | -9321.14 | -24.08 | 0.00 | |
| 16017.00† | 90.000 | 178.602 | 6477.00 | 9421.13 | -9421.11 | -21.64 | 0.00 | |
| 16117.00† | 90.000 | 178.602 | 6477.00 | 9521.10 | -9521.08 | -19.20 | 0.00 | |
| 16217.00† | 90.000 | 178.602 | 6477.00 | 9621.06 | -9621.05 | -16.76 | 0.00 | |
| 16317.00† | 90.000 | 178.602 | 6477.00 | 9721.03 | -9721.02 | -14.32 | 0.00 | |
| 16376.98 | 90.000 | 178.602 | 6477.00 ³ | 9780.99 | -9780.98 | -12.86 | 0.00 | End of Tangent |

| HOLE & CASING SECTIONS | | | | | | | | | |
|--|------------------|----------------|------------------|-------------------|--|-------------------|-------------------|-----------------|-----------------|
| - Ref Wellbore: STATE NORTH PLATTE 11-36-1XRLC PWB | | | | | Ref Wellpath: STATE NORTH PLATTE 11-36-1XRLC (REV-A.0) PWP | | | | |
| String/Diameter | Start MD [ft] | End MD [ft] | Interval [ft] | Start TVD [ft] | End TVD [ft] | Start N/S [ft] | Start E/W [ft] | End N/S [ft] | End E/W [ft] |
| 9.625in Casing Surface | 17.00 | 1550.00 | 1533.00 | 17.00 | 1550.00 | 0.00 | 0.00 | 0.00 | 0.00 |
| 8.5in Open Hole | 1550.00 | 16376.98 | 14826.98 | 1550.00 | N/A | 0.00 | 0.00 | N/A | N/A |

Planned Wellpath Report

STATE NORTH PLATTE 11-36-1XRLC (REV-A.0) PWP

Page 8 of 8



| REFERENCE WELLPATH IDENTIFICATION | | | | |
|-----------------------------------|---------------------------|----------|--|--|
| Operator | BONANZA CREEK OIL COMPANY | Slot | SLOT#13 STATE NORTH PLATTE 11-36-1XRLC (298'FNL & 640'FWL, SEC.36) | |
| Area | COLORADO | Well | STATE NORTH PLATTE 11-36-1XRLC | |
| Field | WELD COUNTY | Wellbore | STATE NORTH PLATTE 11-36-1XRLC PWB | |
| Facility | SEC.36-T5N-R63W | | | |

| TARGETS | | | | | | | | | |
|---|----------|----------|------------|-----------|-------------------|--------------------|----------------|-----------------|---------|
| Name | MD [ft] | TVD [ft] | North [ft] | East [ft] | Grid East [US ft] | Grid North [US ft] | Latitude | Longitude | Shape |
| SEC.01-T04N-R63W | | -7.00 | 909.87 | -3179.36 | 3305660.22 | 1377652.17 | 40°21'53.521"N | 104°24'11.009"W | polygon |
| SEC.36-T5N-R63W | | -7.00 | 829.72 | -3179.37 | 3305661.21 | 1377572.03 | 40°21'52.729"N | 104°24'11.009"W | polygon |
| STATE NORTH PLATTE 11-36-1XRNLB HARDLINES 460'FNL/FSL & FWL/FEL) | | 6290.00 | -33.19 | -118.44 | 3308732.55 | 1376747.48 | 40°21'44.204"N | 104°23'31.466"W | polygon |
| STATE NORTH PLATTE K-O-36HC HARDLINES (460' SETBACKS) | | 6417.72 | -54.65 | -117.35 | 3308733.91 | 1376726.04 | 40°21'43.992"N | 104°23'31.452"W | polygon |
| 1) STATE NORTH PLATTE 11-36-1XRLC EP ON PLAT (531'FNL & 710'FWL, SEC.36) | 6819.21 | 6477.00 | -232.45 | 66.88 | 3308920.34 | 1376550.56 | 40°21'42.235"N | 104°23'29.072"W | point |
| 3) STATE NORTH PLATTE 11-36-1XRLC BHL ON PLAT (470'FSL & 1148'FWL, SEC.01) | 16376.98 | 6477.00 | -9780.98 | -12.86 | 3308959.95 | 1367002.19 | 40°20'07.879"N | 104°23'30.102"W | point |
| 2) STATE NORTH PLATTE 11-36-1XRLC MID LATERAL TARGET (0'FSL & 569'FWL) | 11477.40 | 6477.00 | -4882.86 | -132.40 | 3308779.21 | 1371898.23 | 40°20'56.281"N | 104°23'31.646"W | point |

| SURVEY PROGRAM - | | | | |
|--|-------------|--|------------------|------------------------------------|
| Ref Wellbore: STATE NORTH PLATTE 11-36-1XRLC PWB | | Ref Wellpath: STATE NORTH PLATTE 11-36-1XRLC (REV-A.0) PWP | | |
| Start MD [ft] | End MD [ft] | Positional Uncertainty Model | Log Name/Comment | Wellbore |
| 17.00 | 1550.00 | BHI NaviTrak (Rotating+Axial Corr) | | STATE NORTH PLATTE 11-36-1XRLC PWB |
| 1550.00 | 16376.98 | BHI AutoTrak Curve (Axial Corr, Short spacing) | | STATE NORTH PLATTE 11-36-1XRLC PWB |