



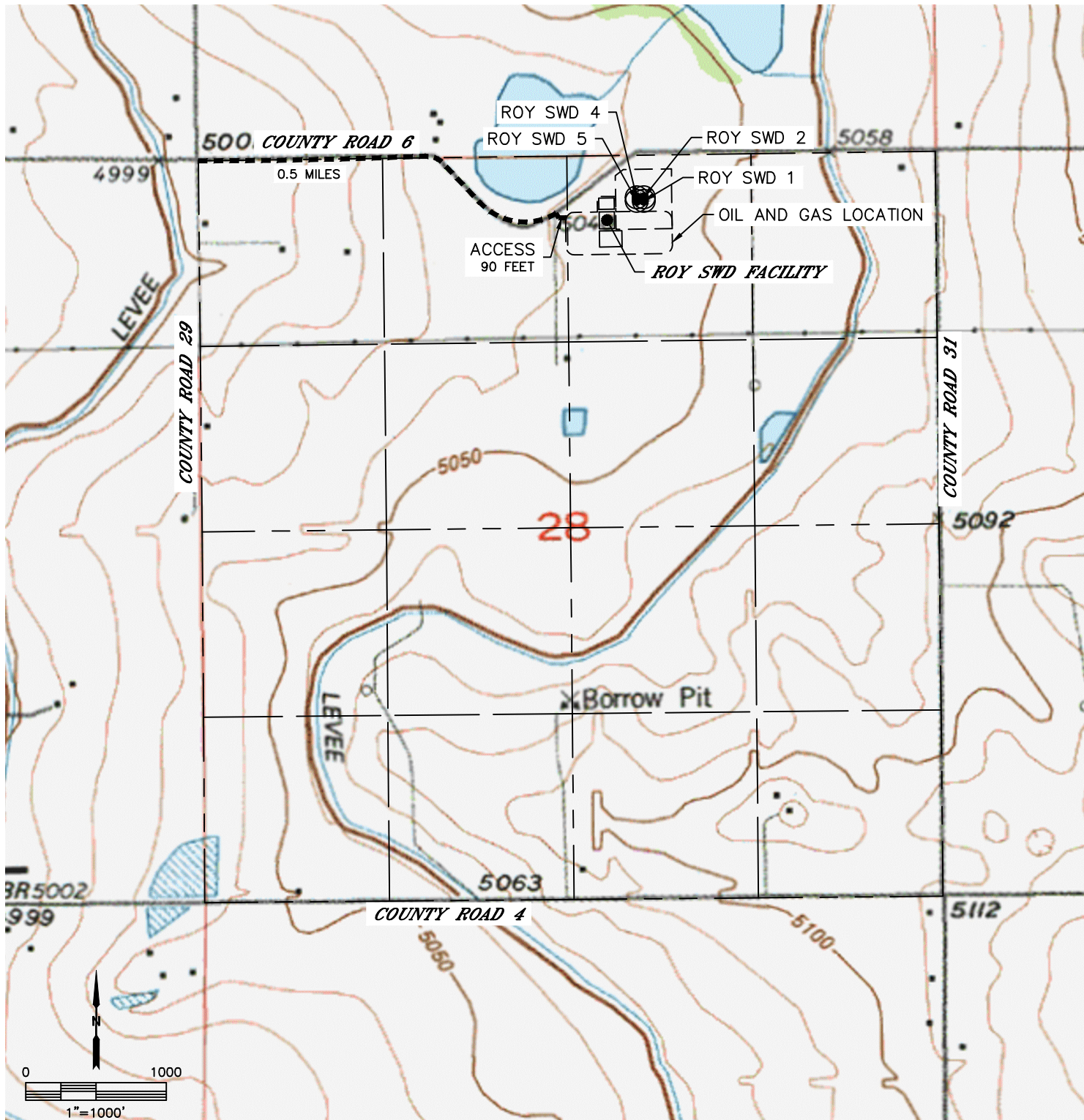
Lat40°, Inc. 6250 W. 10th Street, Unit 2, Greeley, CO 970-515-5294

ACCESS ROAD MAP

ROY SWD FACILITY

SECTION: 28
TOWNSHIP: 1N
RANGE: 66W
6TH. P.M.
WELD COUNTY, CO

DRIVING DIRECTIONS TO ROY SWD FACILITY
FROM THE INTERSECTION OF COUNTY ROAD 29 AND COUNTY ROAD 6, HEAD EAST ON COUNTY ROAD 6 FOR 0.5 MILES TO AN EXISTING ACCESS TO THE SOUTH. THENCE SOUTH THEN DIRECTLY EAST FOR 90 FEET TO THE PROPOSED PRODUCTION FACILITY AND DRILL PAD.





Lat40°, Inc. 6250 W. 10th Street, Unit 2, Greeley, CO 970-515-5294

ACCESS ROAD MAP

ROY SWD FACILITY

SECTION: 28
TOWNSHIP: 1N
RANGE: 66W
6TH. P.M.
WELD COUNTY, CO

