

BONANZA CREEK OIL COMPANY

Location: COLORADO Slot: SLOT#14 STATE NORTH PLATTE F11-J14-36HNC (318'FNL & 640'FWL, SEC.36)
Field: WELD COUNTY Well: STATE NORTH PLATTE F11-J14-36HNC
Facility: SEC.36-T5N-R63W Wellbore: STATE NORTH PLATTE F11-J14-36HNC PWB

Plot reference wellpath is STATE NORTH PLATTE F11-J14-36HNC (REV-A0) PWP	Grid System: NAD83 / Lambert Colorado SP, Northern Zone (501), US feet
True vertical depths are referenced to RIG (17) (RKB)	North Reference: True north
Measured depths are referenced to RIG (17) (RKB)	Scale: True distance
RIG (17) (RKB) to Mean Sea Level: 4560 feet	Depths are in feet
Mean Sea Level to Ground level (At Slot: SLOT#14 STATE NORTH PLATTE F11-J14-36HNC (318'FNL & 640'FWL, SEC.36)): 0 feet	Created by: doddanna on 2018-09-12
Coordinates are in feet referenced to Slot	Database: WellArchitectDB2

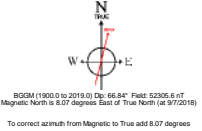
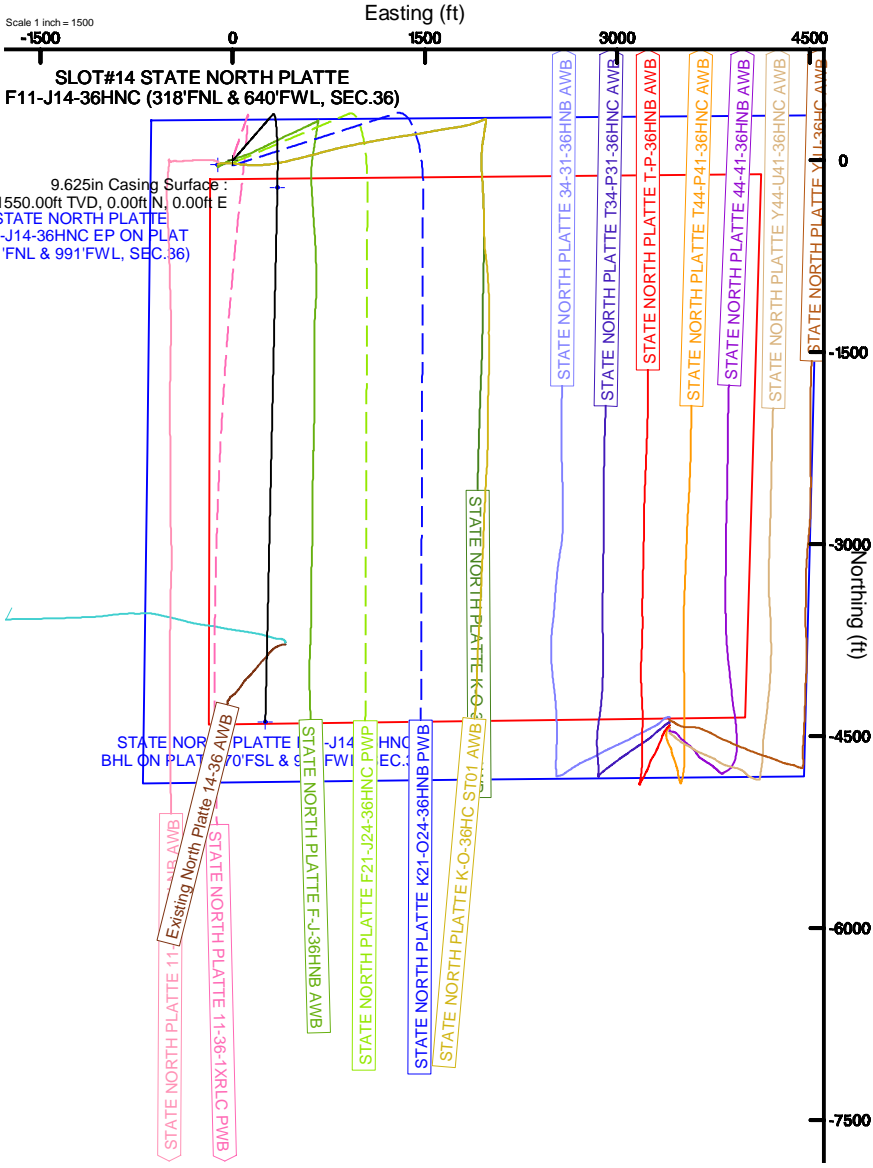
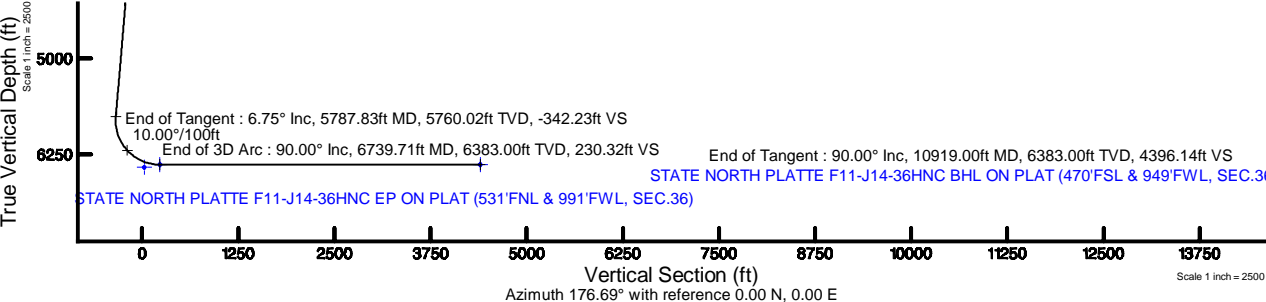
Location Information					
Facility Name			Grid East (US ft)	Grid North (US ft)	Latitude
SEC.36-T5N-R63W			3308733.906	1376726.042	40°21'43.992"N
Slot			Local N (ft)	Local E (ft)	Latitude
SLOT#14 STATE NORTH PLATTE F11-J14-36HNC (318'FNL & 640'FWL, SEC.36)			34.61	117.04	40°21'44.334"N
RIG (17) (RKB) to Ground level (At Slot: SLOT#14 STATE NORTH PLATTE F11-J14-36HNC (318'FNL & 640'FWL, SEC.36))			4560 ft		
Mean Sea Level to Ground level (At Slot: SLOT#14 STATE NORTH PLATTE F11-J14-36HNC (318'FNL & 640'FWL, SEC.36))			0 ft		
RIG (17) (RKB) to Mean Sea Level			4560 ft		

Well Profile Data								
Design Comment	MD (ft)	Inc (°)	Az (°)	TVD (ft)	Local N (ft)	Local E (ft)	DLS (°/100ft)	VS (ft)
Tie On	17.00	0.000	41.006	17.00	0.00	0.00	0.00	0.00
End of Tangent	1550.00	0.000	41.006	1550.00	0.00	0.00	0.00	0.00
End of Build	1887.50	6.750	41.006	1886.72	14.99	13.03	2.00	-14.21
End of Tangent	5787.83	6.750	41.006	5760.02	360.94	313.83	0.00	-342.23
End of 3D Arc	6739.71	90.000	181.294	6383.00	-210.59	348.04	10.00	230.32
End of Tangent	10919.00	90.000	181.294	6383.00	-4388.81	253.64	0.00	4396.14

Hole and Casing Sections										
Name	Start MD (ft)	End MD (ft)	Interval (ft)	Start TVD (ft)	End TVD (ft)	Start Local N (ft)	Start Local E (ft)	End Local N (ft)	End Local E (ft)	Wellbore
9.625in Casing Surface	17.00	1550.00	1533.00	17.00	1550.00	0.00	0.00	0.00	0.00	STATE NORTH PLATTE F11-J14-36HNC PWB
8.5in Open Hole	1550.00	10919.00	9369.00	1550.00	N/A	0.00	0.00	N/A	N/A	STATE NORTH PLATTE F11-J14-36HNC PWB

Survey Program						
Start MD (ft)	End MD (ft)	Tool	Model	Log Name/Comment	Wellbore	
17.00	1550.00	BHI NavTrak	BHI NavTrak (Rotating+Axial Corr)		STATE NORTH PLATTE F11-J14-36HNC PWB	
1550.00	10919.00	BHI AutoTrak Curve	BHI AutoTrak Curve (Axial Corr, Short spacing)			
					STATE NORTH PLATTE F11-J14-36HNC PWB	

Bottom Hole Location							
MD (ft)	Inc (°)	Az (°)	TVD (ft)	Local N (ft)	Local E (ft)	Grid East (US ft)	Grid North (US ft)
10919.00	90.000	181.294	6383.00	-4388.81	253.64	3309158.97	1372377.00



Planned Wellpath Report

STATE NORTH PLATTE F11-J14-36HNC (REV-A.0) PWP

Page 1 of 6



REFERENCE WELLPATH IDENTIFICATION

Operator	BONANZA CREEK OIL COMPANY	Slot	SLOT#14 STATE NORTH PLATTE F11-J14-36HNC (318'FNL & 640'FWL, SEC.36)
Area	COLORADO	Well	STATE NORTH PLATTE F11-J14-36HNC
Field	WELD COUNTY	Wellbore	STATE NORTH PLATTE F11-J14-36HNC PWB
Facility	SEC.36-T5N-R63W		

REPORT SETUP INFORMATION

Projection System	NAD83 / Lambert Colorado SP, Northern Zone (501), US feet	Software System	WellArchitect® 5.1
North Reference	True	User	Doddanna
Scale	0.999959	Report Generated	9/12/2018 at 9:28:20 AM
Convergence at slot	0.72° East	Database/Source file	WellArchitectDB2/STATE_NORTH_PLATTE_F11-J14-36HNC__REV-A.0__PWP.xml

WELLPATH LOCATION

	Local coordinates		Grid coordinates		Geographic coordinates	
	North[ft]	East[ft]	Easting[US ft]	Northing[US ft]	Latitude	Longitude
Slot Location	34.61	117.04	3308850.50	1376762.11	40°21'44.334"N	104°23'29.940"W
Facility Reference Pt			3308733.91	1376726.04	40°21'43.992"N	104°23'31.452"W
Field Reference Pt			3224525.77	1254425.87	40°01'44.400"N	104°41'53.556"W

WELLPATH DATUM

Calculation method	Minimum curvature	RIG (17') (RKB) to Facility Vertical Datum	4560.00ft
Horizontal Reference Pt	Slot	RIG (17') (RKB) to Mean Sea Level	4560.00ft
Vertical Reference Pt	RIG (17') (RKB)	RIG (17') (RKB) to Ground Level at Slot (SLOT#14 STATE NORTH PLATTE F11-J14-36HNC (318'FNL & 640'FWL, SEC.36))	4560.00ft
MD Reference Pt	RIG (17') (RKB)	Section Origin	N 0.00, E 0.00 ft
Field Vertical Reference	Mean Sea Level	Section Azimuth	176.69°

Planned Wellpath Report

STATE NORTH PLATTE F11-J14-36HNC (REV-A.0) PWP

Page 2 of 6



REFERENCE WELLPATH IDENTIFICATION			
Operator	BONANZA CREEK OIL COMPANY	Slot	SLOT#14 STATE NORTH PLATTE F11-J14-36HNC (318'FNL & 640'FWL, SEC.36)
Area	COLORADO	Well	STATE NORTH PLATTE F11-J14-36HNC
Field	WELD COUNTY	Wellbore	STATE NORTH PLATTE F11-J14-36HNC PWB
Facility	SEC.36-T5N-R63W		

WELLPATH DATA (116 stations) † = interpolated/extrapolated station

MD [ft]	Inclination [°]	Azimuth [°]	TVD [ft]	Vert Sect [ft]	North [ft]	East [ft]	DLS [°/100ft]	Comments
0.00†	0.000	41.006	0.00	0.00	0.00	0.00	0.00	
17.00	0.000	41.006	17.00	0.00	0.00	0.00	0.00	Tie On
117.00†	0.000	41.006	117.00	0.00	0.00	0.00	0.00	
217.00†	0.000	41.006	217.00	0.00	0.00	0.00	0.00	
317.00†	0.000	41.006	317.00	0.00	0.00	0.00	0.00	
417.00†	0.000	41.006	417.00	0.00	0.00	0.00	0.00	
517.00†	0.000	41.006	517.00	0.00	0.00	0.00	0.00	
617.00†	0.000	41.006	617.00	0.00	0.00	0.00	0.00	
717.00†	0.000	41.006	717.00	0.00	0.00	0.00	0.00	
817.00†	0.000	41.006	817.00	0.00	0.00	0.00	0.00	
917.00†	0.000	41.006	917.00	0.00	0.00	0.00	0.00	
1017.00†	0.000	41.006	1017.00	0.00	0.00	0.00	0.00	
1117.00†	0.000	41.006	1117.00	0.00	0.00	0.00	0.00	
1217.00†	0.000	41.006	1217.00	0.00	0.00	0.00	0.00	
1317.00†	0.000	41.006	1317.00	0.00	0.00	0.00	0.00	
1417.00†	0.000	41.006	1417.00	0.00	0.00	0.00	0.00	
1517.00†	0.000	41.006	1517.00	0.00	0.00	0.00	0.00	
1550.00	0.000	41.006	1550.00	0.00	0.00	0.00	0.00	End of Tangent
1617.00†	1.340	41.006	1616.99	-0.56	0.59	0.51	2.00	
1717.00†	3.340	41.006	1716.91	-3.48	3.67	3.19	2.00	
1817.00†	5.340	41.006	1816.61	-8.90	9.38	8.16	2.00	
1887.50	6.750	41.006	1886.72	-14.21	14.99	13.03	2.00	End of Build
1917.00†	6.750	41.006	1916.02	-16.69	17.60	15.30	0.00	
2017.00†	6.750	41.006	2015.32	-25.10	26.47	23.02	0.00	
2117.00†	6.750	41.006	2114.63	-33.51	35.34	30.73	0.00	
2217.00†	6.750	41.006	2213.94	-41.92	44.21	38.44	0.00	
2317.00†	6.750	41.006	2313.24	-50.33	53.08	46.15	0.00	
2417.00†	6.750	41.006	2412.55	-58.74	61.95	53.87	0.00	
2517.00†	6.750	41.006	2511.86	-67.15	70.82	61.58	0.00	
2617.00†	6.750	41.006	2611.16	-75.56	79.69	69.29	0.00	

Planned Wellpath Report

STATE NORTH PLATTE F11-J14-36HNC (REV-A.0) PWP

Page 3 of 6



REFERENCE WELLPATH IDENTIFICATION			
Operator	BONANZA CREEK OIL COMPANY	Slot	SLOT#14 STATE NORTH PLATTE F11-J14-36HNC (318'FNL & 640'FWL, SEC.36)
Area	COLORADO	Well	STATE NORTH PLATTE F11-J14-36HNC
Field	WELD COUNTY	Wellbore	STATE NORTH PLATTE F11-J14-36HNC PWB
Facility	SEC.36-T5N-R63W		

WELLPATH DATA (116 stations) † = interpolated/extrapolated station								
MD [ft]	Inclination [°]	Azimuth [°]	TVD [ft]	Vert Sect [ft]	North [ft]	East [ft]	DLS [°/100ft]	Comments
2717.00†	6.750	41.006	2710.47	-83.97	88.56	77.00	0.00	
2817.00†	6.750	41.006	2809.78	-92.38	97.43	84.71	0.00	
2917.00†	6.750	41.006	2909.08	-100.79	106.30	92.43	0.00	
3017.00†	6.750	41.006	3008.39	-109.20	115.17	100.14	0.00	
3117.00†	6.750	41.006	3107.70	-117.61	124.04	107.85	0.00	
3217.00†	6.750	41.006	3207.00	-126.02	132.91	115.56	0.00	
3317.00†	6.750	41.006	3306.31	-134.43	141.78	123.27	0.00	
3417.00†	6.750	41.006	3405.62	-142.84	150.65	130.99	0.00	
3517.00†	6.750	41.006	3504.92	-151.25	159.52	138.70	0.00	
3617.00†	6.750	41.006	3604.23	-159.66	168.39	146.41	0.00	
3717.00†	6.750	41.006	3703.54	-168.07	177.26	154.12	0.00	
3817.00†	6.750	41.006	3802.85	-176.48	186.13	161.84	0.00	
3917.00†	6.750	41.006	3902.15	-184.89	195.00	169.55	0.00	
4017.00†	6.750	41.006	4001.46	-193.30	203.87	177.26	0.00	
4117.00†	6.750	41.006	4100.77	-201.71	212.74	184.97	0.00	
4217.00†	6.750	41.006	4200.07	-210.12	221.61	192.68	0.00	
4317.00†	6.750	41.006	4299.38	-218.53	230.48	200.40	0.00	
4417.00†	6.750	41.006	4398.69	-226.94	239.35	208.11	0.00	
4517.00†	6.750	41.006	4497.99	-235.35	248.22	215.82	0.00	
4617.00†	6.750	41.006	4597.30	-243.76	257.09	223.53	0.00	
4717.00†	6.750	41.006	4696.61	-252.17	265.96	231.24	0.00	
4817.00†	6.750	41.006	4795.91	-260.58	274.83	238.96	0.00	
4917.00†	6.750	41.006	4895.22	-268.99	283.70	246.67	0.00	
5017.00†	6.750	41.006	4994.53	-277.40	292.57	254.38	0.00	
5117.00†	6.750	41.006	5093.83	-285.81	301.44	262.09	0.00	
5217.00†	6.750	41.006	5193.14	-294.22	310.31	269.81	0.00	
5317.00†	6.750	41.006	5292.45	-302.63	319.18	277.52	0.00	
5417.00†	6.750	41.006	5391.75	-311.05	328.05	285.23	0.00	
5517.00†	6.750	41.006	5491.06	-319.46	336.92	292.94	0.00	
5617.00†	6.750	41.006	5590.37	-327.87	345.79	300.65	0.00	

Planned Wellpath Report

STATE NORTH PLATTE F11-J14-36HNC (REV-A.0) PWP

Page 4 of 6



REFERENCE WELLPATH IDENTIFICATION			
Operator	BONANZA CREEK OIL COMPANY	Slot	SLOT#14 STATE NORTH PLATTE F11-J14-36HNC (318'FNL & 640'FWL, SEC.36)
Area	COLORADO	Well	STATE NORTH PLATTE F11-J14-36HNC
Field	WELD COUNTY	Wellbore	STATE NORTH PLATTE F11-J14-36HNC PWB
Facility	SEC.36-T5N-R63W		

WELLPATH DATA (116 stations) † = interpolated/extrapolated station

MD [ft]	Inclination [°]	Azimuth [°]	TVD [ft]	Vert Sect [ft]	North [ft]	East [ft]	DLS [°/100ft]	Comments
5717.00†	6.750	41.006	5689.68	-336.28	354.66	308.37	0.00	
5787.83	6.750	41.006	5760.02	-342.23	360.94	313.83	0.00	End of Tangent
5817.00†	4.884	63.556	5789.04	-343.95	362.79	316.07	10.00	
5917.00†	8.850	152.238	5888.51	-338.60	357.86	323.48	10.00	
6017.00†	18.233	168.023	5985.65	-316.08	335.70	330.33	10.00	
6117.00†	28.038	173.131	6077.51	-277.06	296.96	336.40	10.00	
6217.00†	37.940	175.728	6161.29	-222.72	242.83	341.51	10.00	
6317.00†	47.877	177.373	6234.44	-154.73	174.96	345.51	10.00	
6417.00†	57.832	178.568	6294.75	-75.14	95.40	348.28	10.00	
6517.00†	67.796	179.525	6340.38	13.62	6.57	349.72	10.00	
6617.00†	77.765	180.355	6369.95	108.86	-88.83	349.80	10.00	
6717.00†	87.736	181.123	6382.55	207.69	-187.89	348.52	10.00	
6739.71	90.000	181.294	6383.00†	230.32	-210.59	348.04	10.00	End of 3D Arc
6817.00†	90.000	181.294	6383.00	307.36	-287.86	346.29	0.00	
6917.00†	90.000	181.294	6383.00	407.04	-387.84	344.04	0.00	
7017.00†	90.000	181.294	6383.00	506.72	-487.81	341.78	0.00	
7117.00†	90.000	181.294	6383.00	606.39	-587.78	339.52	0.00	
7217.00†	90.000	181.294	6383.00	706.07	-687.76	337.26	0.00	
7317.00†	90.000	181.294	6383.00	805.75	-787.73	335.00	0.00	
7417.00†	90.000	181.294	6383.00	905.43	-887.71	332.74	0.00	
7517.00†	90.000	181.294	6383.00	1005.11	-987.68	330.48	0.00	
7617.00†	90.000	181.294	6383.00	1104.78	-1087.66	328.22	0.00	
7717.00†	90.000	181.294	6383.00	1204.46	-1187.63	325.97	0.00	
7817.00†	90.000	181.294	6383.00	1304.14	-1287.61	323.71	0.00	
7917.00†	90.000	181.294	6383.00	1403.82	-1387.58	321.45	0.00	
8017.00†	90.000	181.294	6383.00	1503.49	-1487.56	319.19	0.00	
8117.00†	90.000	181.294	6383.00	1603.17	-1587.53	316.93	0.00	
8217.00†	90.000	181.294	6383.00	1702.85	-1687.50	314.67	0.00	
8317.00†	90.000	181.294	6383.00	1802.53	-1787.48	312.41	0.00	
8417.00†	90.000	181.294	6383.00	1902.20	-1887.45	310.15	0.00	

Planned Wellpath Report

STATE NORTH PLATTE F11-J14-36HNC (REV-A.0) PWP

Page 5 of 6



REFERENCE WELLPATH IDENTIFICATION			
Operator	BONANZA CREEK OIL COMPANY	Slot	SLOT#14 STATE NORTH PLATTE F11-J14-36HNC (318'FNL & 640'FWL, SEC.36)
Area	COLORADO	Well	STATE NORTH PLATTE F11-J14-36HNC
Field	WELD COUNTY	Wellbore	STATE NORTH PLATTE F11-J14-36HNC PWB
Facility	SEC.36-T5N-R63W		

WELLPATH DATA (116 stations) † = interpolated/extrapolated station								
MD [ft]	Inclination [°]	Azimuth [°]	TVD [ft]	Vert Sect [ft]	North [ft]	East [ft]	DLS [°/100ft]	Comments
8517.00†	90.000	181.294	6383.00	2001.88	-1987.43	307.90	0.00	
8617.00†	90.000	181.294	6383.00	2101.56	-2087.40	305.64	0.00	
8717.00†	90.000	181.294	6383.00	2201.24	-2187.38	303.38	0.00	
8817.00†	90.000	181.294	6383.00	2300.91	-2287.35	301.12	0.00	
8917.00†	90.000	181.294	6383.00	2400.59	-2387.33	298.86	0.00	
9017.00†	90.000	181.294	6383.00	2500.27	-2487.30	296.60	0.00	
9117.00†	90.000	181.294	6383.00	2599.95	-2587.27	294.34	0.00	
9217.00†	90.000	181.294	6383.00	2699.62	-2687.25	292.08	0.00	
9317.00†	90.000	181.294	6383.00	2799.30	-2787.22	289.83	0.00	
9417.00†	90.000	181.294	6383.00	2898.98	-2887.20	287.57	0.00	
9517.00†	90.000	181.294	6383.00	2998.66	-2987.17	285.31	0.00	
9617.00†	90.000	181.294	6383.00	3098.34	-3087.15	283.05	0.00	
9717.00†	90.000	181.294	6383.00	3198.01	-3187.12	280.79	0.00	
9817.00†	90.000	181.294	6383.00	3297.69	-3287.10	278.53	0.00	
9917.00†	90.000	181.294	6383.00	3397.37	-3387.07	276.27	0.00	
10017.00†	90.000	181.294	6383.00	3497.05	-3487.04	274.01	0.00	
10117.00†	90.000	181.294	6383.00	3596.72	-3587.02	271.76	0.00	
10217.00†	90.000	181.294	6383.00	3696.40	-3686.99	269.50	0.00	
10317.00†	90.000	181.294	6383.00	3796.08	-3786.97	267.24	0.00	
10417.00†	90.000	181.294	6383.00	3895.76	-3886.94	264.98	0.00	
10517.00†	90.000	181.294	6383.00	3995.43	-3986.92	262.72	0.00	
10617.00†	90.000	181.294	6383.00	4095.11	-4086.89	260.46	0.00	
10717.00†	90.000	181.294	6383.00	4194.79	-4186.87	258.20	0.00	
10817.00†	90.000	181.294	6383.00	4294.47	-4286.84	255.95	0.00	
10917.00†	90.000	181.294	6383.00	4394.14	-4386.82	253.69	0.00	
10919.00	90.000	181.294	6383.00 ²	4396.14	-4388.81	253.64	0.00	End of Tangent

Planned Wellpath Report

STATE NORTH PLATTE F11-J14-36HNC (REV-A.0) PWP

Page 6 of 6



REFERENCE WELLPATH IDENTIFICATION			
Operator	BONANZA CREEK OIL COMPANY	Slot	SLOT#14 STATE NORTH PLATTE F11-J14-36HNC (318'FNL & 640'FWL, SEC.36)
Area	COLORADO	Well	STATE NORTH PLATTE F11-J14-36HNC
Field	WELD COUNTY	Wellbore	STATE NORTH PLATTE F11-J14-36HNC PWB
Facility	SEC.36-T5N-R63W		

HOLE & CASING SECTIONS									
- Ref Wellbore: STATE NORTH PLATTE F11-J14-36HNC PWB					Ref Wellpath: STATE NORTH PLATTE F11-J14-36HNC (REV-A.0) PWP				
String/Diameter	Start MD [ft]	End MD [ft]	Interval [ft]	Start TVD [ft]	End TVD [ft]	Start N/S [ft]	Start E/W [ft]	End N/S [ft]	End E/W [ft]
9.625in Casing Surface	17.00	1550.00	1533.00	17.00	1550.00	0.00	0.00	0.00	0.00
8.5in Open Hole	1550.00	10919.00	9369.00	1550.00	N/A	0.00	0.00	N/A	N/A

TARGETS									
Name	MD [ft]	TVD [ft]	North [ft]	East [ft]	Grid East [US ft]	Grid North [US ft]	Latitude	Longitude	Shape
SEC.36-T5N-R63W		-7.00	849.75	-3179.06	3305661.21	1377572.03	40°21'52.729"N	104°24'11.009"W	polygon
2) STATE NORTH PLATTE F11-J14-36HNC BHL ON PLAT (470'FSL & 949'FWL, SEC.36)	10919.00	6383.00	-4388.81	253.64	3309158.97	1372377.00	40°21'00.965"N	104°23'26.664"W	point
1) STATE NORTH PLATTE F11-J14-36HNC EP ON PLAT (531'FNL & 991'FWL, SEC.36)	6739.71	6383.00	-210.59	348.04	3309201.13	1376555.90	40°21'42.253"N	104°23'25.444"W	point
STATE NORTH PLATTE K-O-36HC HARDLINES (460' SETBACKS)		6417.72	-34.61	-117.04	3308733.91	1376726.04	40°21'43.992"N	104°23'31.452"W	polygon

SURVEY PROGRAM -				
Ref Wellbore: STATE NORTH PLATTE F11-J14-36HNC PWB		Ref Wellpath: STATE NORTH PLATTE F11-J14-36HNC (REV-A.0) PWP		
Start MD [ft]	End MD [ft]	Positional Uncertainty Model	Log Name/Comment	Wellbore
17.00	1550.00	BHI NaviTrak (Rotating+Axial Corr)		STATE NORTH PLATTE F11-J14-36HNC PWB
1550.00	10919.00	BHI AutoTrak Curve (Axial Corr, Short spacing)		STATE NORTH PLATTE F11-J14-36HNC PWB