

LEGEND:

- = 90° SYMBOL
- = PROPOSED WELLHEAD.
- = TARGET BOTTOM HOLE.
- ◆ = ENTRY TARGET.
- ▲ = SECTION CORNERS LOCATED. (NAD 83)

T5N, R63W, 6th P.M.

2012 Alum. Cap,
#38175, 0.9' High
Below Ground
Lat: 40.363175°
Long: 104.393933°
SP NAD83
(CO. NORTH)
N: 1377067.57
E: 3308210.42

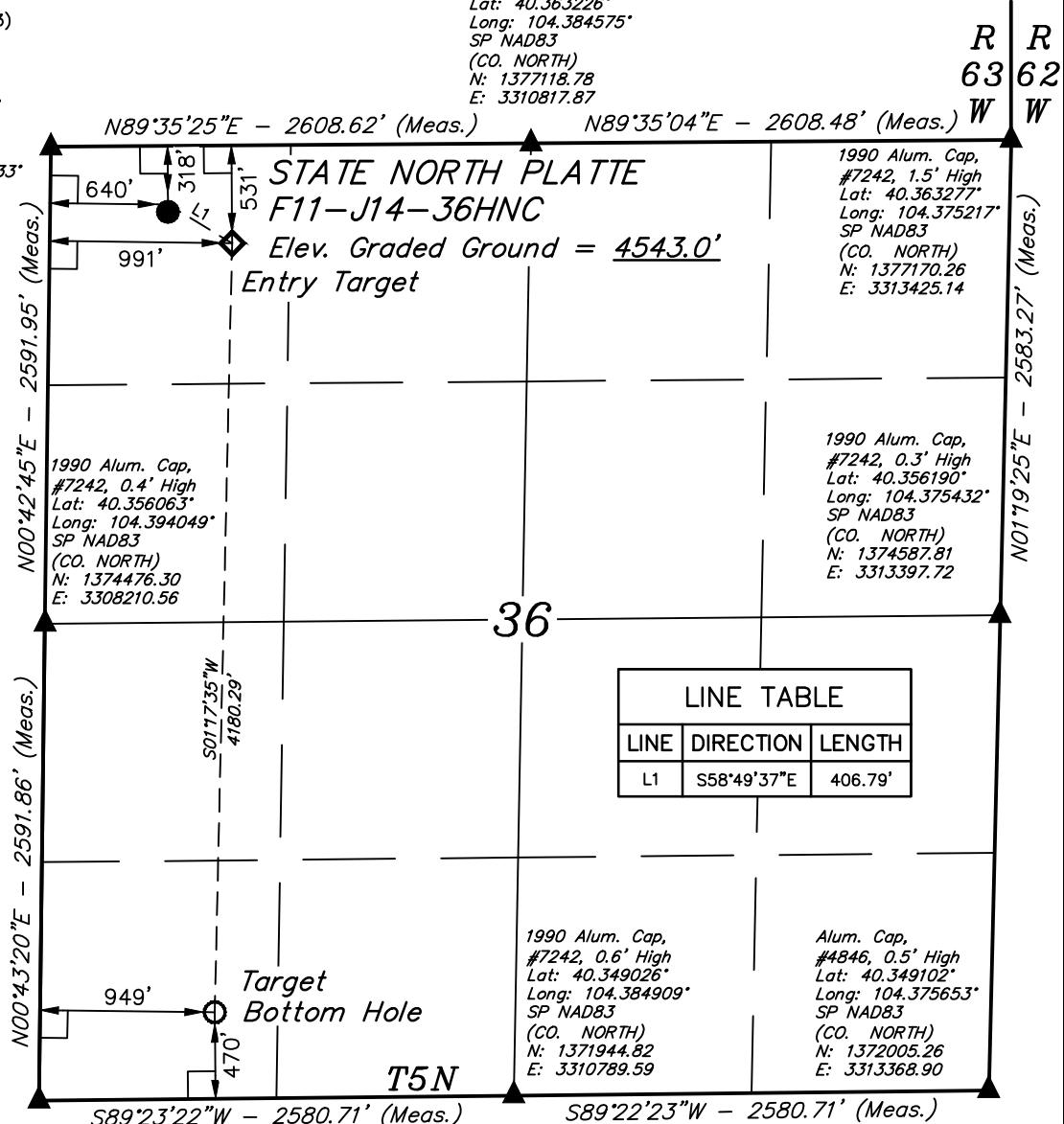
2016 Alum. Cap,
#28285, 0.4' High
Lat: 40.363226°
Long: 104.384575°
SP NAD83
(CO. NORTH)
N: 1377118.78
E: 3310817.87

1990 Alum. Cap,
#7242, 1.5' High
Lat: 40.363277°
Long: 104.375217°
SP NAD83
(CO. NORTH)
N: 1377170.26
E: 3313425.14

1990 Alum. Cap,
#7242, 0.3' High
Lat: 40.356063°
Long: 104.394049°
SP NAD83
(CO. NORTH)
N: 1374476.30
E: 3308210.56

1990 Alum. Cap,
#7242, 0.6' High
Lat: 40.349026°
Long: 104.384909°
SP NAD83
(CO. NORTH)
N: 1371944.82
E: 3310789.59

Alum. Cap,
#4846, 0.5' High
Lat: 40.349102°
Long: 104.375653°
SP NAD83
(CO. NORTH)
N: 1372005.26
E: 3313368.90



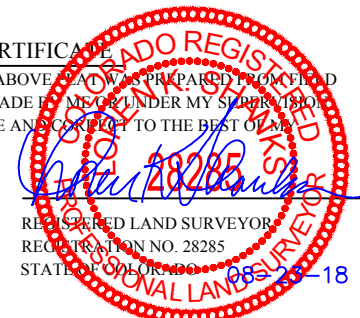
PDOP = 1.5

NAD 83 (SURFACE LOCATION)	
LATITUDE = 40°21'44.34" (40.362315)	
LONGITUDE = 104°23'29.94" (104.391650)	
STATE PLANE NAD 83 (CO. NORTH)	
N: 1376762.22 E: 3308850.63	
NAD 83 (ENTRY TARGET)	
LATITUDE = 40°21'42.25" (40.361737)	
LONGITUDE = 104°23'25.44" (104.390401)	
STATE PLANE NAD 83 (CO. NORTH)	
N: 1376556.07 E: 3309201.20	
NAD 83 (TARGET BOTTOM HOLE)	
LATITUDE = 40°21'00.97" (40.350268)	
LONGITUDE = 104°23'26.66" (104.390740)	
STATE PLANE NAD 83 (CO. NORTH)	
N: 1372377.08 E: 3309159.06	

2012 Alum. Cap,
#38175, 1.5' High
Lat: 40.348950°
Long: 104.394166°
SP NAD83
(CO. NORTH)
N: 1371885.12
E: 3308210.26

CERTIFICATE

THIS IS TO CERTIFY THAT THE ABOVE PLAT WAS PREPARED FROM FIELD NOTES OF ACTUAL SURVEYS MADE BY ME OR UNDER MY SUPERVISION, AND THAT THE SAME ARE TRUE AND CORRECT TO THE BEST OF MY KNOWLEDGE AND BELIEF.



REV: 3 08-23-18 C.IVIE (SL MOVE & STATE PLANE ADD)

BASIS OF BEARINGS
BASIS OF BEARINGS IS A G.P.S. OBSERVATION
BASIS OF ELEVATION

USGS COOPERATIVE BASE NETWORK CONTROL STATION,
DESIGNATION 'M414'. NGS DATA SHEET LISTS THE
NAVD 88 ELEVATION AS BEING 4600.58 FEET



UELS, LLC
Corporate Office * 85 South 200 East
Vernal, UT 84078 * (435) 789-1017



**BONANZA CREEK ENERGY
OPERATING COMPANY, LLC**

**STATE NORTH PLATTE F11-J14-36HNC
NW 1/4 NW 1/4, SECTION 36, T5N, R63W, 6th P.M.
WELD COUNTY, COLORADO**

SURVEYED BY	DALLAS NIELSEN, C.M.	10-20-16	SCALE
DRAWN BY	K.B.	10-10-16	1" = 1000'

WELL LOCATION PLAT