

Location:	COLORADO	Slot:	SLOT#15 STATE NORTH PLATTE F21-J24-36HNC (338'FNL & 640'FWL, SEC.36)
Field:	WELD COUNTY	Well:	STATE NORTH PLATTE F21-J24-36HNC
Facility:	SEC.36-T5N-R63W	Wellbore:	STATE NORTH PLATTE F21-J24-36HNC PWP

Post reference wellpath is STATE NORTH PLATTE F21-J24-36H(N/EV4.6) PWP	Grid System: NAD83 / Lambert Colorado SP, Northern Zone [501] , US feet
True vertical depths are referenced to RIG (17) (RXB)	North Reference: True north
Measured depths are referenced to RIG (17) (RXB)	Scale: True distance
RIG (17) (RXB) to Mean Sea Level: 4560 feet	Depths are in feet
Mean Sea Level to Ground level (A Slot: SLOTA15 STATE NORTH PLATTE F21-J24-36H(NL 338FNL & 640FNL, SEC.36): 0 feet	Created by: doddanna on 2018-09-12
Coordinates are in feet referenced to Slot	Database: WeArchtectDB2

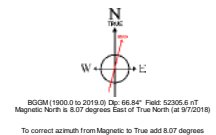
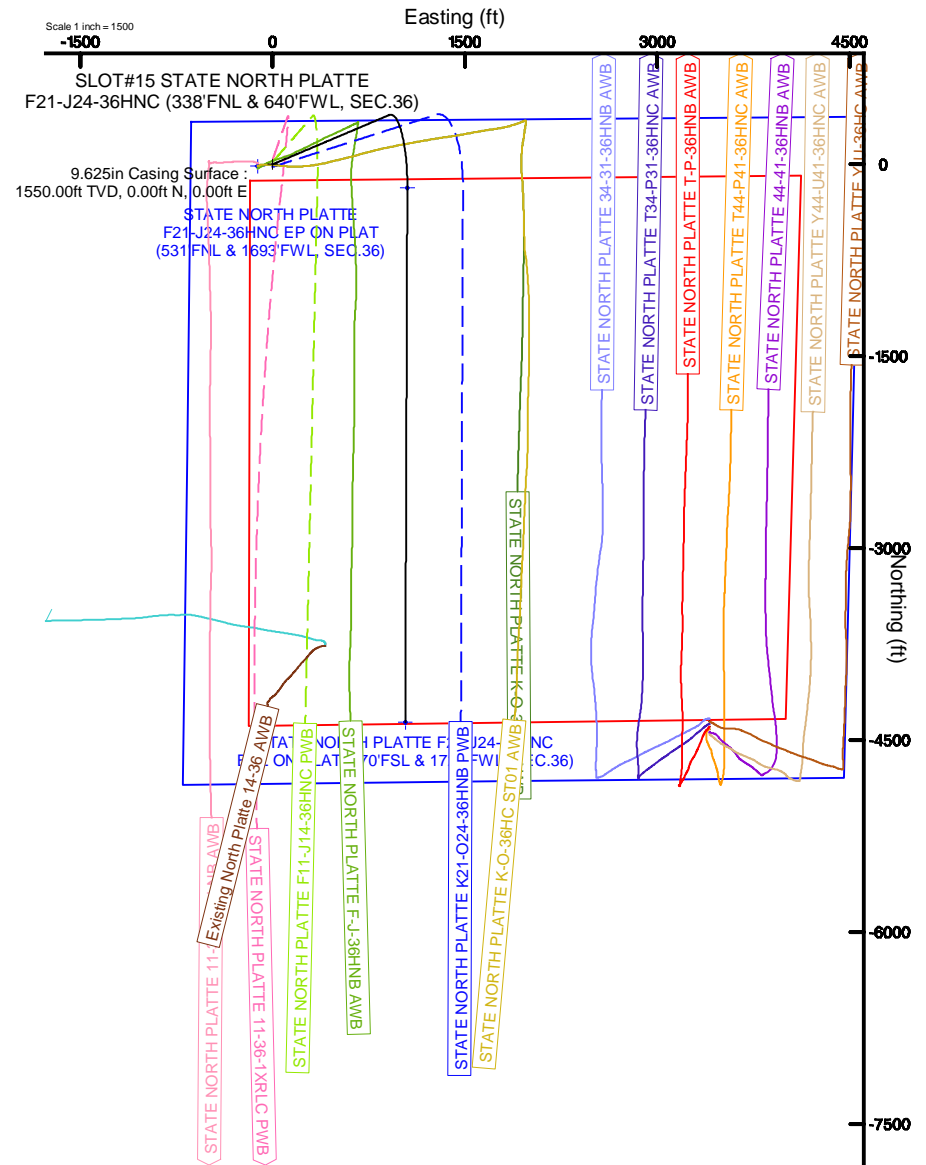
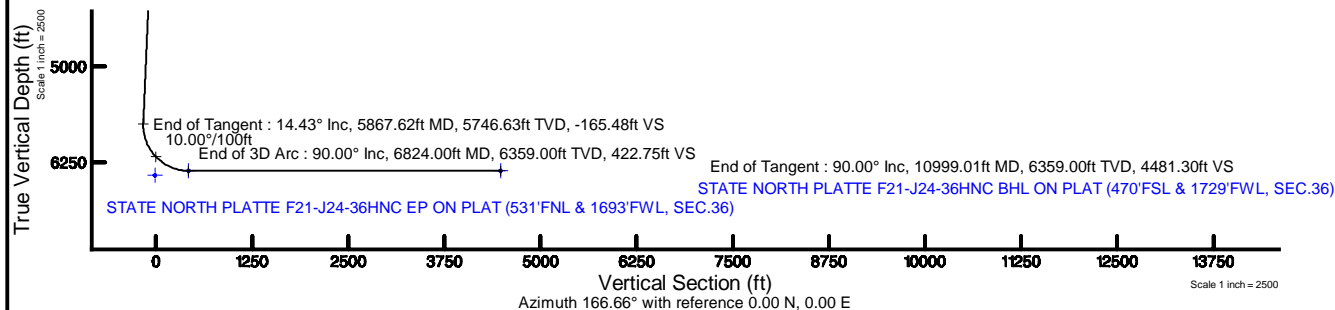
Facility Name				G10 East (US It)	G10 North (US It)	Latitude	Longitude
SEC-36-TSN R63W				3308733.906	1376726.042	40°21'43.992"N	104°23'31.462"W
Stet	Local N (It)	Local E (It)	G14 East (US It)	G14 North (US It)	Latitude	Longitude	
SLOT15 STATE NORTH PLATTE F21-J24-36HNC (338FNE & 640FWL, SEC.36)	14.67	116.73	3308950.445	1376742.071	40°21'44.136"N	104°23'29.944"W	
NG (17) (90R) to Ground level (At Stet: SLOT15 STATE NORTH PLATTE F21-J24-36HNC (338FNE & 640FWL, SEC.36))						4560ft	
Mean Sea Level to Ground level (At Stet: SLOT15 STATE NORTH PLATTE F21-J24-36HNC (338FNE & 640FWL, SEC.36))						0ft	
NG (17) (90R) to Mean Sea Level						4560ft	

Design Comment	MD (ft)	Inc (°)	Az (°)	TVD (ft)	Local N (ft)	Local E (ft)	DLS (°/100ft)	VS (ft)
Tie On	17.00	0.00	66.999	17.00	0.00	0.00	0.00	0.00
End of Tangent	1550.00	0.00	66.999	1550.00	0.00	0.00	0.00	0.00
End of Build	2271.29	14.426	66.999	2263.70	35.29	83.14	2.00	-15.16
End of Tangent	5867.62	14.426	66.999	5746.63	385.38	907.86	0.00	-165.48
End of 3D Arc	6824.00	90.000	180.224	6359.00	-185.37	1050.39	10.00	422.75
End of Tangent	10999.01	90.000	180.224	6359.00	-4360.36	1034.08	0.00	4481.30

Name	Start MD (ft)	End MD (ft)	Interval (ft)	Start TVD (ft)	End TVD (ft)	Start Local N (ft)	Start Local E (ft)	End Local N (ft)	End Local E (ft)	Wellbore
9.625in Casing Surface	17.00	1550.00	1533.00	17.00	1550.00	0.00	0.00	0.00	0.00	STATE NORTH PLATTE F21-224-36HNC PWP
8.5in Open Hole	1550.00	10999.01	9449.01	1550.00	6359.00	0.00	0.00	-4360.35	1034.08	STATE NORTH PLATTE F21-224-36HNC PWP

Start MD (ft)	End MD (ft)	Tool	Model	Log Name/Comment	Wellbore
17.00	1550.00	BHI NavTrak	BHI NavTrak (Rotating+Axial Corr)		STATE NORTH PLATTE F21-J24-36HNC PWP
1550.00	10999.01	BHI AutoTrak Curve	BHI AutoTrak Curve (Axial Corr, Short spacing)		STATE NORTH PLATTE F21-J24-36HNC PWP

MD (ft)	Inc (°)	Az (°)	TVD (ft)	Local N (ft)	Local E (ft)	Grid East (US ft)	Grid North (US ft)	Latitude	Longitude
10999.01	90.000	180.224	6359.00	-4360.36	1034.08	3309938.89	1372395.17	40°21'01.048"N	104°23'16.588"W



Planned Wellpath Report

STATE NORTH PLATTE F21-J24-36HNC (REV-A.0) PWP

Page 1 of 6



REFERENCE WELLPATH IDENTIFICATION

Operator	BONANZA CREEK OIL COMPANY	Slot	SLOT#15 STATE NORTH PLATTE F21-J24-36HNC (338'FNL & 640'FWL, SEC.36)
Area	COLORADO	Well	STATE NORTH PLATTE F21-J24-36HNC
Field	WELD COUNTY	Wellbore	STATE NORTH PLATTE F21-J24-36HNC PWP
Facility	SEC.36-T5N-R63W		

REPORT SETUP INFORMATION

Projection System	NAD83 / Lambert Colorado SP, Northern Zone (501), US feet	Software System	WellArchitect® 5.1
North Reference	True	User	Doddanna
Scale	0.999959	Report Generated	9/12/2018 at 9:37:44 AM
Convergence at slot	0.72° East	Database/Source file	WellArchitectDB2/STATE_NORTH_PLATTE_F21-J24-36HNC__REV-A.0__PWP.xml

WELLPATH LOCATION

	Local coordinates		Grid coordinates		Geographic coordinates	
	North[ft]	East[ft]	Easting[US ft]	Northing[US ft]	Latitude	Longitude
Slot Location	14.57	116.73	3308850.45	1376742.07	40°21'44.136"N	104°23'29.944"W
Facility Reference Pt			3308733.91	1376726.04	40°21'43.992"N	104°23'31.452"W
Field Reference Pt			3224525.77	1254425.87	40°01'44.400"N	104°41'53.556"W

WELLPATH DATUM

Calculation method	Minimum curvature	RIG (17') (RKB) to Facility Vertical Datum	4560.00ft
Horizontal Reference Pt	Slot	RIG (17') (RKB) to Mean Sea Level	4560.00ft
Vertical Reference Pt	RIG (17') (RKB)	RIG (17') (RKB) to Ground Level at Slot (SLOT#15 STATE NORTH PLATTE F21-J24-36HNC (338'FNL & 640'FWL, SEC.36))	4560.00ft
MD Reference Pt	RIG (17') (RKB)	Section Origin	N 0.00, E 0.00 ft
Field Vertical Reference	Mean Sea Level	Section Azimuth	166.66°

Planned Wellpath Report

STATE NORTH PLATTE F21-J24-36HNC (REV-A.0) PWP

Page 2 of 6



REFERENCE WELLPATH IDENTIFICATION			
Operator	BONANZA CREEK OIL COMPANY	Slot	SLOT#15 STATE NORTH PLATTE F21-J24-36HNC (338'FNL & 640'FWL, SEC.36)
Area	COLORADO	Well	STATE NORTH PLATTE F21-J24-36HNC
Field	WELD COUNTY	Wellbore	STATE NORTH PLATTE F21-J24-36HNC PWP
Facility	SEC.36-T5N-R63W		

WELLPATH DATA (116 stations) † = interpolated/extrapolated station								
MD [ft]	Inclination [°]	Azimuth [°]	TVD [ft]	Vert Sect [ft]	North [ft]	East [ft]	DLS [°/100ft]	Comments
0.00†	0.000	66.999	0.00	0.00	0.00	0.00	0.00	
17.00	0.000	66.999	17.00	0.00	0.00	0.00	0.00	Tie On
117.00†	0.000	66.999	117.00	0.00	0.00	0.00	0.00	
217.00†	0.000	66.999	217.00	0.00	0.00	0.00	0.00	
317.00†	0.000	66.999	317.00	0.00	0.00	0.00	0.00	
417.00†	0.000	66.999	417.00	0.00	0.00	0.00	0.00	
517.00†	0.000	66.999	517.00	0.00	0.00	0.00	0.00	
617.00†	0.000	66.999	617.00	0.00	0.00	0.00	0.00	
717.00†	0.000	66.999	717.00	0.00	0.00	0.00	0.00	
817.00†	0.000	66.999	817.00	0.00	0.00	0.00	0.00	
917.00†	0.000	66.999	917.00	0.00	0.00	0.00	0.00	
1017.00†	0.000	66.999	1017.00	0.00	0.00	0.00	0.00	
1117.00†	0.000	66.999	1117.00	0.00	0.00	0.00	0.00	
1217.00†	0.000	66.999	1217.00	0.00	0.00	0.00	0.00	
1317.00†	0.000	66.999	1317.00	0.00	0.00	0.00	0.00	
1417.00†	0.000	66.999	1417.00	0.00	0.00	0.00	0.00	
1517.00†	0.000	66.999	1517.00	0.00	0.00	0.00	0.00	
1550.00	0.000	66.999	1550.00	0.00	0.00	0.00	0.00	End of Tangent
1617.00†	1.340	66.999	1616.99	-0.13	0.31	0.72	2.00	
1717.00†	3.340	66.999	1716.91	-0.82	1.90	4.48	2.00	
1817.00†	5.340	66.999	1816.61	-2.09	4.86	11.44	2.00	
1917.00†	7.340	66.999	1916.00	-3.94	9.17	21.61	2.00	
2017.00†	9.340	66.999	2014.93	-6.37	14.84	34.96	2.00	
2117.00†	11.340	66.999	2113.31	-9.38	21.85	51.48	2.00	
2217.00†	13.340	66.999	2210.99	-12.97	30.20	71.15	2.00	
2271.29	14.426	66.999	2263.70	-15.16	35.29	83.14	2.00	End of Build
2317.00†	14.426	66.999	2307.96	-17.07	39.74	93.63	0.00	
2417.00†	14.426	66.999	2404.81	-21.25	49.48	116.56	0.00	
2517.00†	14.426	66.999	2501.66	-25.43	59.21	139.49	0.00	
2617.00†	14.426	66.999	2598.50	-29.61	68.95	162.42	0.00	

Planned Wellpath Report

STATE NORTH PLATTE F21-J24-36HNC (REV-A.0) PWP

Page 3 of 6



REFERENCE WELLPATH IDENTIFICATION			
Operator	BONANZA CREEK OIL COMPANY	Slot	SLOT#15 STATE NORTH PLATTE F21-J24-36HNC (338'FNL & 640'FWL, SEC.36)
Area	COLORADO	Well	STATE NORTH PLATTE F21-J24-36HNC
Field	WELD COUNTY	Wellbore	STATE NORTH PLATTE F21-J24-36HNC PWP
Facility	SEC.36-T5N-R63W		

WELLPATH DATA (116 stations) † = interpolated/extrapolated station								
MD [ft]	Inclination [°]	Azimuth [°]	TVD [ft]	Vert Sect [ft]	North [ft]	East [ft]	DLS [°/100ft]	Comments
2717.00†	14.426	66.999	2695.35	-33.79	78.68	185.35	0.00	
2817.00†	14.426	66.999	2792.20	-37.97	88.42	208.29	0.00	
2917.00†	14.426	66.999	2889.04	-42.15	98.15	231.22	0.00	
3017.00†	14.426	66.999	2985.89	-46.33	107.88	254.15	0.00	
3117.00†	14.426	66.999	3082.74	-50.51	117.62	277.08	0.00	
3217.00†	14.426	66.999	3179.59	-54.69	127.35	300.01	0.00	
3317.00†	14.426	66.999	3276.43	-58.87	137.09	322.95	0.00	
3417.00†	14.426	66.999	3373.28	-63.05	146.82	345.88	0.00	
3517.00†	14.426	66.999	3470.13	-67.23	156.56	368.81	0.00	
3617.00†	14.426	66.999	3566.97	-71.41	166.29	391.74	0.00	
3717.00†	14.426	66.999	3663.82	-75.59	176.03	414.68	0.00	
3817.00†	14.426	66.999	3760.67	-79.77	185.76	437.61	0.00	
3917.00†	14.426	66.999	3857.52	-83.95	195.49	460.54	0.00	
4017.00†	14.426	66.999	3954.36	-88.13	205.23	483.47	0.00	
4117.00†	14.426	66.999	4051.21	-92.31	214.96	506.40	0.00	
4217.00†	14.426	66.999	4148.06	-96.49	224.70	529.34	0.00	
4317.00†	14.426	66.999	4244.90	-100.67	234.43	552.27	0.00	
4417.00†	14.426	66.999	4341.75	-104.85	244.17	575.20	0.00	
4517.00†	14.426	66.999	4438.60	-109.03	253.90	598.13	0.00	
4617.00†	14.426	66.999	4535.44	-113.21	263.64	621.07	0.00	
4717.00†	14.426	66.999	4632.29	-117.39	273.37	644.00	0.00	
4817.00†	14.426	66.999	4729.14	-121.57	283.10	666.93	0.00	
4917.00†	14.426	66.999	4825.99	-125.75	292.84	689.86	0.00	
5017.00†	14.426	66.999	4922.83	-129.93	302.57	712.79	0.00	
5117.00†	14.426	66.999	5019.68	-134.11	312.31	735.73	0.00	
5217.00†	14.426	66.999	5116.53	-138.29	322.04	758.66	0.00	
5317.00†	14.426	66.999	5213.37	-142.47	331.78	781.59	0.00	
5417.00†	14.426	66.999	5310.22	-146.65	341.51	804.52	0.00	
5517.00†	14.426	66.999	5407.07	-150.83	351.25	827.45	0.00	
5617.00†	14.426	66.999	5503.92	-155.01	360.98	850.39	0.00	

Planned Wellpath Report

STATE NORTH PLATTE F21-J24-36HNC (REV-A.0) PWP

Page 4 of 6



REFERENCE WELLPATH IDENTIFICATION			
Operator	BONANZA CREEK OIL COMPANY	Slot	SLOT#15 STATE NORTH PLATTE F21-J24-36HNC (338'FNL & 640'FWL, SEC.36)
Area	COLORADO	Well	STATE NORTH PLATTE F21-J24-36HNC
Field	WELD COUNTY	Wellbore	STATE NORTH PLATTE F21-J24-36HNC PWP
Facility	SEC.36-T5N-R63W		

WELLPATH DATA (116 stations) † = interpolated/extrapolated station								
MD [ft]	Inclination [°]	Azimuth [°]	TVD [ft]	Vert Sect [ft]	North [ft]	East [ft]	DLS [°/100ft]	Comments
5717.00†	14.426	66.999	5600.76	-159.19	370.71	873.32	0.00	
5817.00†	14.426	66.999	5697.61	-163.37	380.45	896.25	0.00	
5867.62	14.426	66.999	5746.63	-165.48	385.38	907.86	0.00	End of Tangent
5917.00†	13.318	87.185	5794.60	-165.48	388.06	919.21	10.00	
6017.00†	16.181	125.669	5891.52	-152.82	380.48	942.09	10.00	
6117.00†	23.294	146.922	5985.70	-123.62	355.73	964.26	10.00	
6217.00†	31.932	157.933	6074.29	-78.76	314.55	985.04	10.00	
6317.00†	41.142	164.525	6154.58	-19.59	258.19	1003.80	10.00	
6417.00†	50.609	169.031	6224.14	52.07	188.37	1019.97	10.00	
6517.00†	60.209	172.446	6280.86	134.06	107.22	1033.06	10.00	
6617.00†	69.880	175.256	6323.01	223.88	17.18	1042.67	10.00	
6717.00†	79.591	177.735	6349.31	318.80	-78.99	1048.51	10.00	
6817.00†	89.319	180.063	6358.96	415.95	-178.37	1050.41	10.00	
6824.00	90.000	180.224	6359.00 [†]	422.75	-185.37	1050.39	10.00	End of 3D Arc
6917.00†	90.000	180.224	6359.00	513.16	-278.37	1050.03	0.00	
7017.00†	90.000	180.224	6359.00	610.37	-378.37	1049.64	0.00	
7117.00†	90.000	180.224	6359.00	707.58	-478.37	1049.24	0.00	
7217.00†	90.000	180.224	6359.00	804.79	-578.37	1048.85	0.00	
7317.00†	90.000	180.224	6359.00	902.00	-678.37	1048.46	0.00	
7417.00†	90.000	180.224	6359.00	999.21	-778.37	1048.07	0.00	
7517.00†	90.000	180.224	6359.00	1096.42	-878.37	1047.68	0.00	
7617.00†	90.000	180.224	6359.00	1193.63	-978.37	1047.29	0.00	
7717.00†	90.000	180.224	6359.00	1290.84	-1078.37	1046.90	0.00	
7817.00†	90.000	180.224	6359.00	1388.05	-1178.37	1046.51	0.00	
7917.00†	90.000	180.224	6359.00	1485.26	-1278.37	1046.12	0.00	
8017.00†	90.000	180.224	6359.00	1582.47	-1378.36	1045.73	0.00	
8117.00†	90.000	180.224	6359.00	1679.68	-1478.36	1045.34	0.00	
8217.00†	90.000	180.224	6359.00	1776.89	-1578.36	1044.95	0.00	
8317.00†	90.000	180.224	6359.00	1874.10	-1678.36	1044.56	0.00	
8417.00†	90.000	180.224	6359.00	1971.31	-1778.36	1044.17	0.00	

Planned Wellpath Report

STATE NORTH PLATTE F21-J24-36HNC (REV-A.0) PWP

Page 5 of 6



REFERENCE WELLPATH IDENTIFICATION			
Operator	BONANZA CREEK OIL COMPANY	Slot	SLOT#15 STATE NORTH PLATTE F21-J24-36HNC (338'FNL & 640'FWL, SEC.36)
Area	COLORADO	Well	STATE NORTH PLATTE F21-J24-36HNC
Field	WELD COUNTY	Wellbore	STATE NORTH PLATTE F21-J24-36HNC PWP
Facility	SEC.36-T5N-R63W		

WELLPATH DATA (116 stations) † = interpolated/extrapolated station								
MD [ft]	Inclination [°]	Azimuth [°]	TVD [ft]	Vert Sect [ft]	North [ft]	East [ft]	DLS [°/100ft]	Comments
8517.00†	90.000	180.224	6359.00	2068.52	-1878.36	1043.77	0.00	
8617.00†	90.000	180.224	6359.00	2165.73	-1978.36	1043.38	0.00	
8717.00†	90.000	180.224	6359.00	2262.94	-2078.36	1042.99	0.00	
8817.00†	90.000	180.224	6359.00	2360.15	-2178.36	1042.60	0.00	
8917.00†	90.000	180.224	6359.00	2457.36	-2278.36	1042.21	0.00	
9017.00†	90.000	180.224	6359.00	2554.57	-2378.36	1041.82	0.00	
9117.00†	90.000	180.224	6359.00	2651.78	-2478.36	1041.43	0.00	
9217.00†	90.000	180.224	6359.00	2749.00	-2578.36	1041.04	0.00	
9317.00†	90.000	180.224	6359.00	2846.21	-2678.36	1040.65	0.00	
9417.00†	90.000	180.224	6359.00	2943.42	-2778.35	1040.26	0.00	
9517.00†	90.000	180.224	6359.00	3040.63	-2878.35	1039.87	0.00	
9617.00†	90.000	180.224	6359.00	3137.84	-2978.35	1039.48	0.00	
9717.00†	90.000	180.224	6359.00	3235.05	-3078.35	1039.09	0.00	
9817.00†	90.000	180.224	6359.00	3332.26	-3178.35	1038.69	0.00	
9917.00†	90.000	180.224	6359.00	3429.47	-3278.35	1038.30	0.00	
10017.00†	90.000	180.224	6359.00	3526.68	-3378.35	1037.91	0.00	
10117.00†	90.000	180.224	6359.00	3623.89	-3478.35	1037.52	0.00	
10217.00†	90.000	180.224	6359.00	3721.10	-3578.35	1037.13	0.00	
10317.00†	90.000	180.224	6359.00	3818.31	-3678.35	1036.74	0.00	
10417.00†	90.000	180.224	6359.00	3915.52	-3778.35	1036.35	0.00	
10517.00†	90.000	180.224	6359.00	4012.73	-3878.35	1035.96	0.00	
10617.00†	90.000	180.224	6359.00	4109.94	-3978.35	1035.57	0.00	
10717.00†	90.000	180.224	6359.00	4207.15	-4078.34	1035.18	0.00	
10817.00†	90.000	180.224	6359.00	4304.36	-4178.34	1034.79	0.00	
10917.00†	90.000	180.224	6359.00	4401.57	-4278.34	1034.40	0.00	
10999.01	90.000	180.224	6359.00 ²	4481.30	-4360.36	1034.08	0.00	End of Tangent

Planned Wellpath Report

STATE NORTH PLATTE F21-J24-36HNC (REV-A.0) PWP

Page 6 of 6



REFERENCE WELLPATH IDENTIFICATION			
Operator	BONANZA CREEK OIL COMPANY	Slot	SLOT#15 STATE NORTH PLATTE F21-J24-36HNC (338'FNL & 640'FWL, SEC.36)
Area	COLORADO	Well	STATE NORTH PLATTE F21-J24-36HNC
Field	WELD COUNTY	Wellbore	STATE NORTH PLATTE F21-J24-36HNC PWP
Facility	SEC.36-T5N-R63W		

HOLE & CASING SECTIONS									
- Ref Wellbore: STATE NORTH PLATTE F21-J24-36HNC PWP					Ref Wellpath: STATE NORTH PLATTE F21-J24-36HNC (REV-A.0) PWP				
String/Diameter	Start MD [ft]	End MD [ft]	Interval [ft]	Start TVD [ft]	End TVD [ft]	Start N/S [ft]	Start E/W [ft]	End N/S [ft]	End E/W [ft]
9.625in Casing Surface	17.00	1550.00	1533.00	17.00	1550.00	0.00	0.00	0.00	0.00
8.5in Open Hole	1550.00	10999.01	9449.01	1550.00	6359.00	0.00	0.00	-4360.35	1034.08

TARGETS									
Name	MD [ft]	TVD [ft]	North [ft]	East [ft]	Grid East [US ft]	Grid North [US ft]	Latitude	Longitude	Shape
SEC.36-T5N-R63W		-7.00	869.79	-3178.75	3305661.21	1377572.03	40°21'52.729"N	104°24'11.009"W	polygon
2) STATE NORTH PLATTE F21-J24-36HNC BHL ON PLAT (470'FSL & 1729'FWL, SEC.36)	10999.01	6359.00	-4360.36	1034.08	3309938.89	1372395.17	40°21'01.048"N	104°23'16.588"W	point
1) STATE NORTH PLATTE F21-J24-36HNC EP ON PLAT (531'FNL & 1693'FWL, SEC.36)	6824.00	6359.00	-185.37	1050.39	3309903.02	1376569.85	40°21'42.304"N	104°23'16.375"W	point
STATE NORTH PLATTE K-O-36HC HARDLINES (460' SETBACKS)		6417.72	-14.57	-116.73	3308733.91	1376726.04	40°21'43.992"N	104°23'31.452"W	polygon

SURVEY PROGRAM -				
Ref Wellbore: STATE NORTH PLATTE F21-J24-36HNC PWP			Ref Wellpath: STATE NORTH PLATTE F21-J24-36HNC (REV-A.0) PWP	
Start MD [ft]	End MD [ft]	Positional Uncertainty Model	Log Name/Comment	Wellbore
17.00	1550.00	BHI NaviTrak (Rotating+Axial Corr)		STATE NORTH PLATTE F21-J24-36HNC PWP
1550.00	10999.01	BHI AutoTrak Curve (Axial Corr, Short spacing)		STATE NORTH PLATTE F21-J24-36HNC PWP