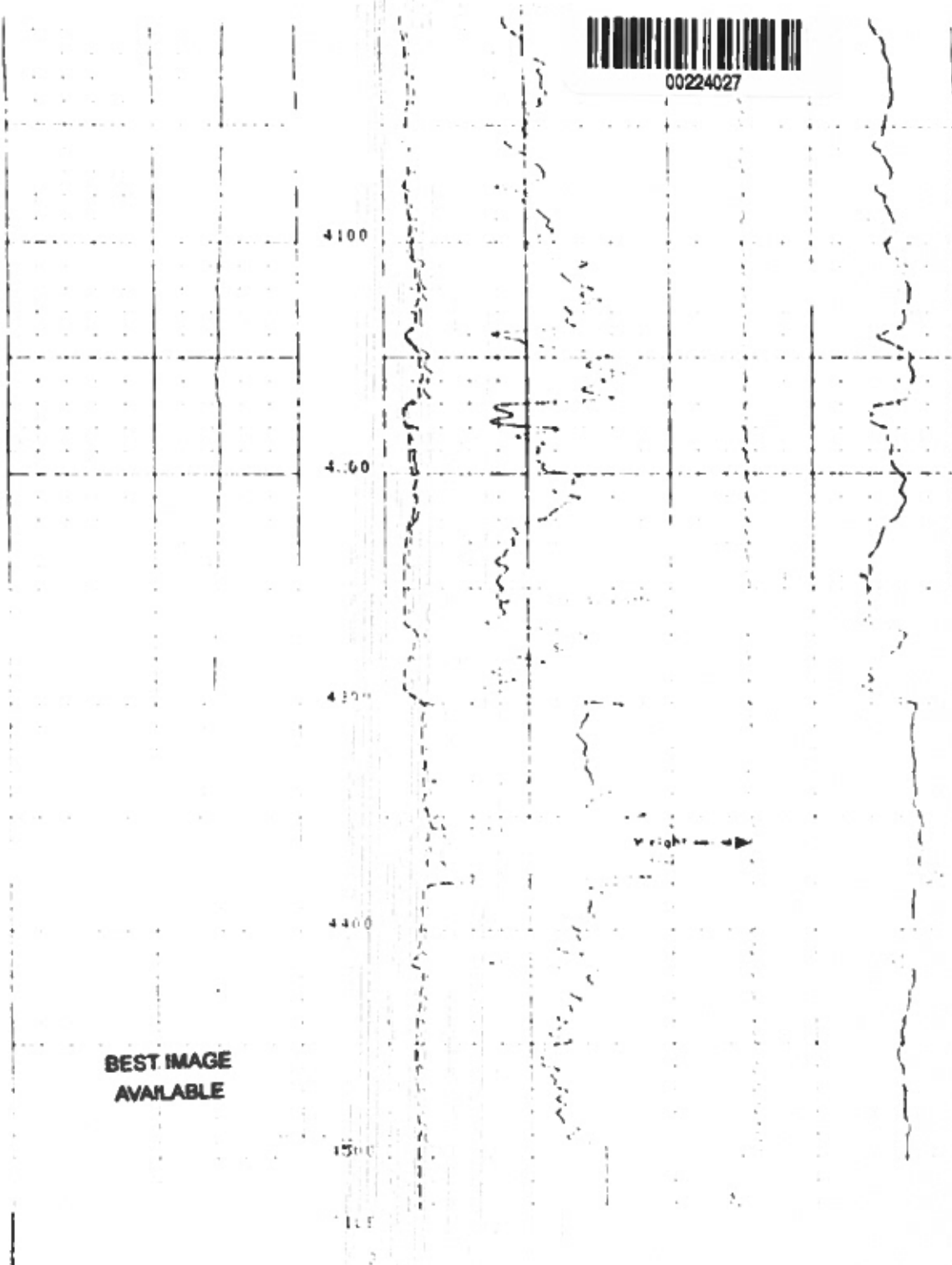




00224027



1.0 OHM	53.613		
2.0 OHM	10.000		
3.0 OHM	50.000	TENSION	5000.0
4.0 OHM	10.000		

CON OR MEASURE POINT TO TENSION REFERENCE POINT

CON	3.9	FEET	1.0	FEET
CON	1.0	FEET	1.0	FEET
CON	1.0	FEET	1.0	FEET

PARAMETERS

NAME	VALUE	UNIT	NAME	VALUE	UNIT
------	-------	------	------	-------	------

BEST IMAGE
AVAILABLE

200

200

400

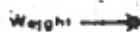
500

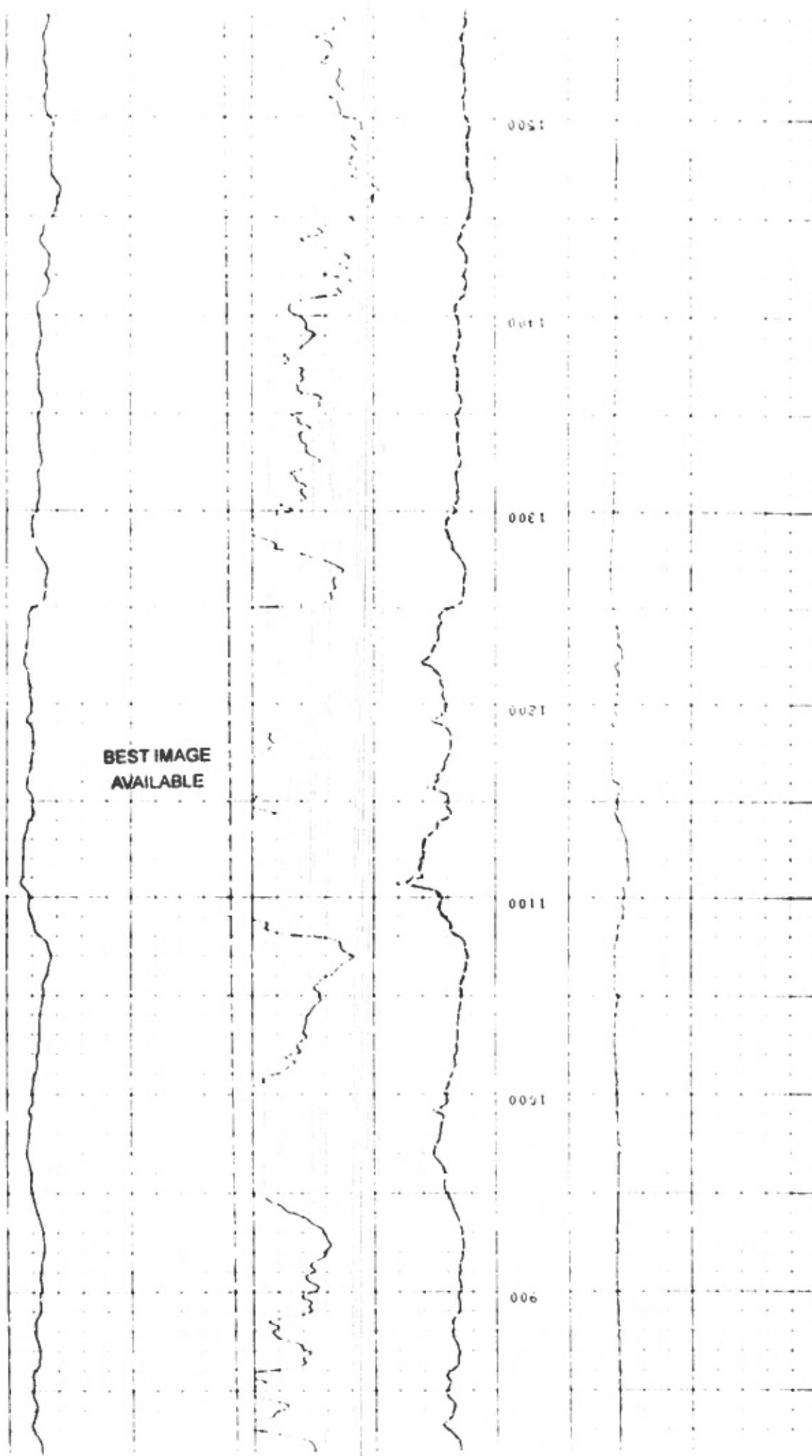
600

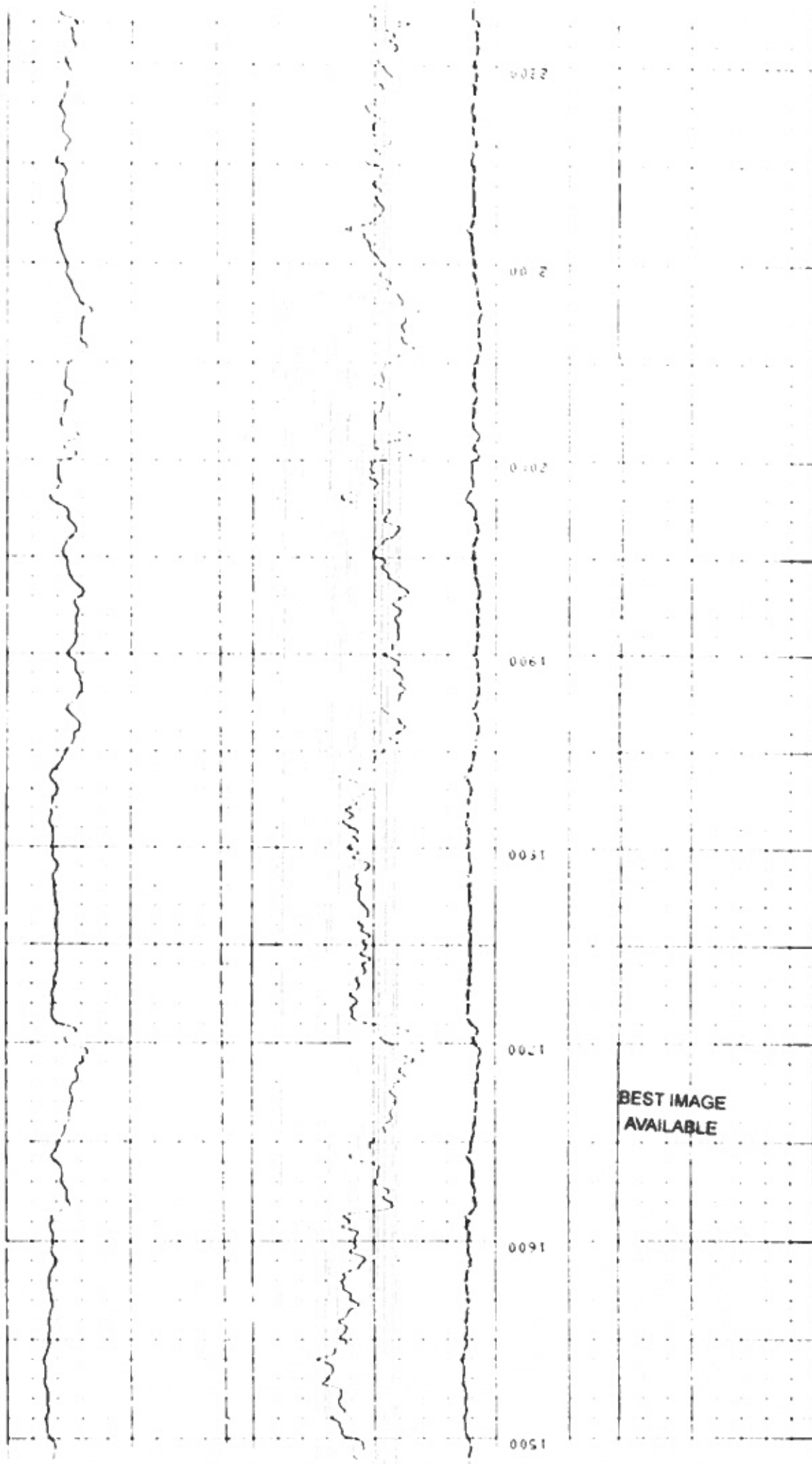
700

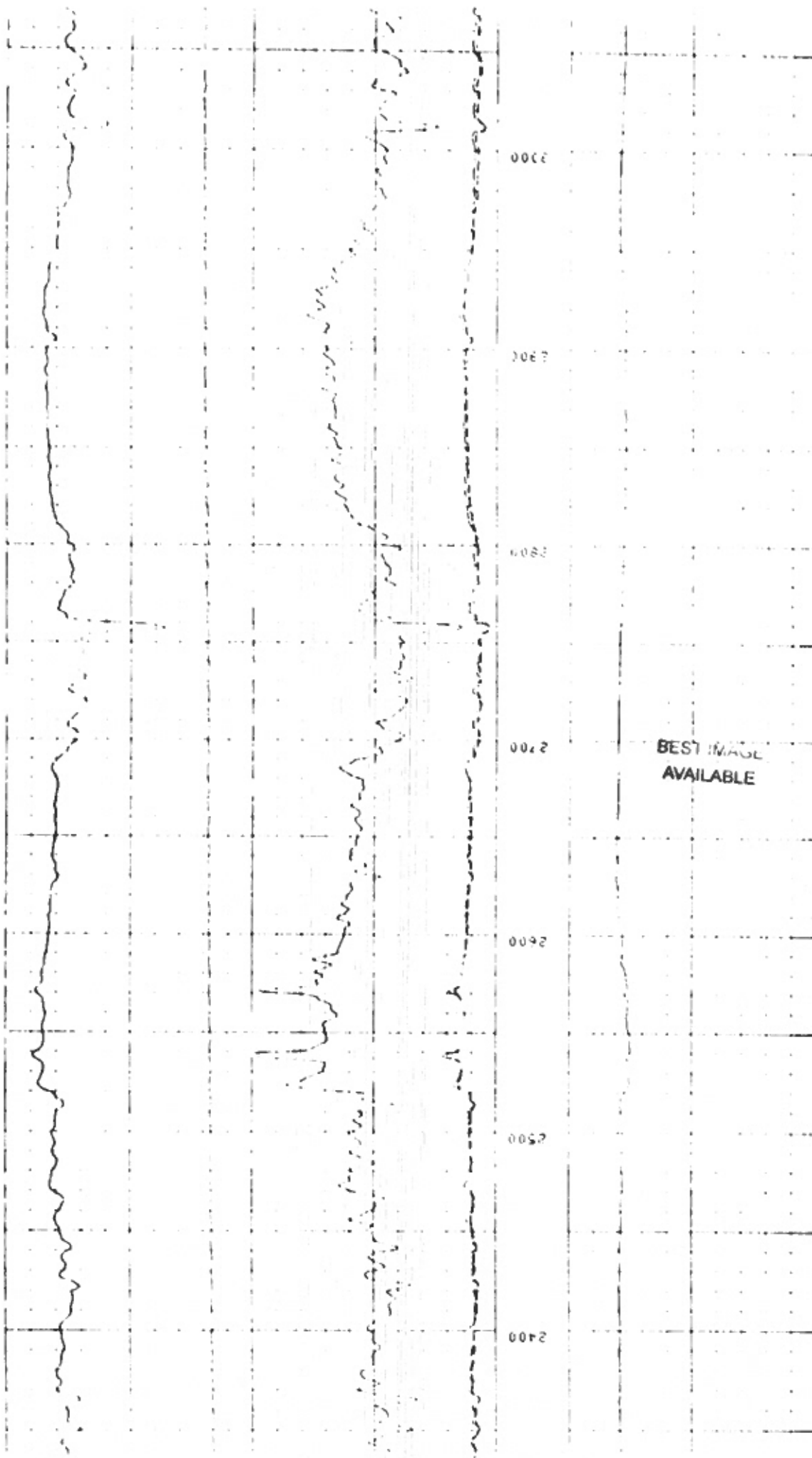
800

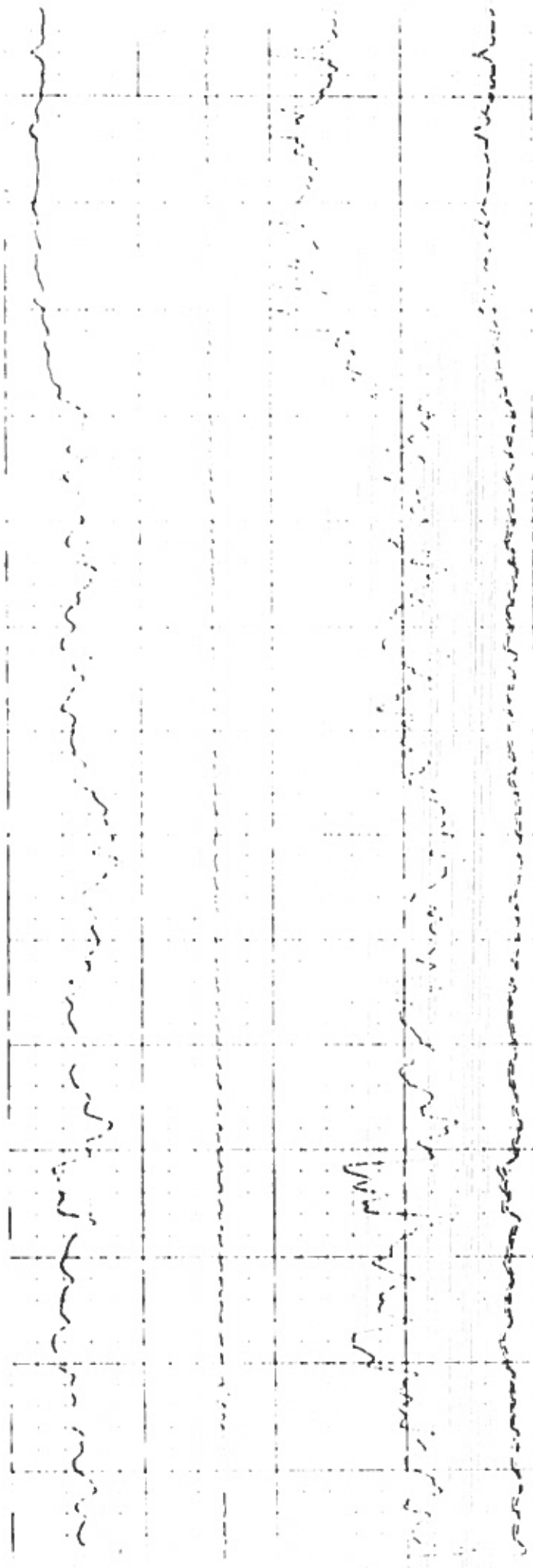
Weight









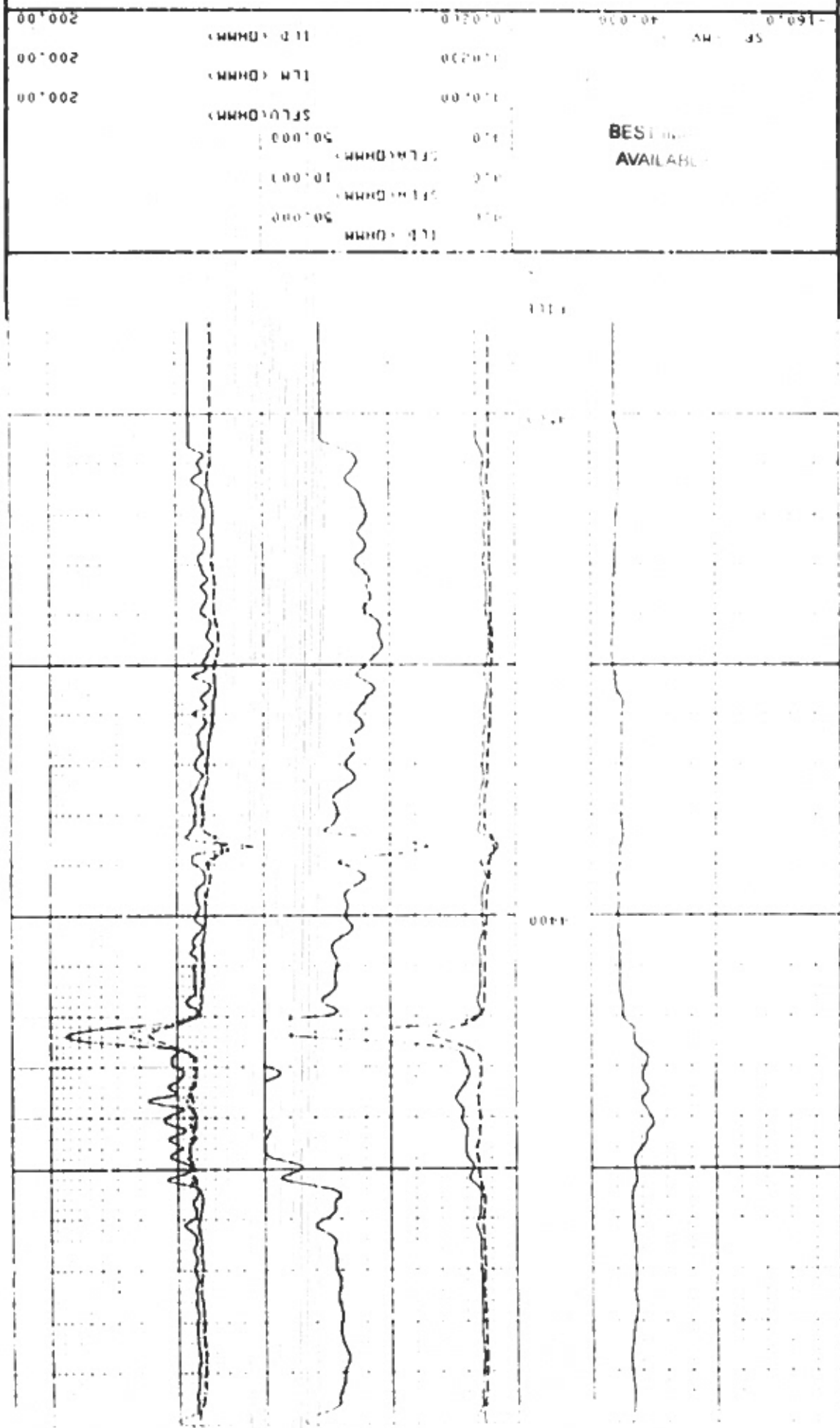


3100
3200
3300
3400
3500
3600
3700

BEST IMAGE
AVAILABLE

133 134 135

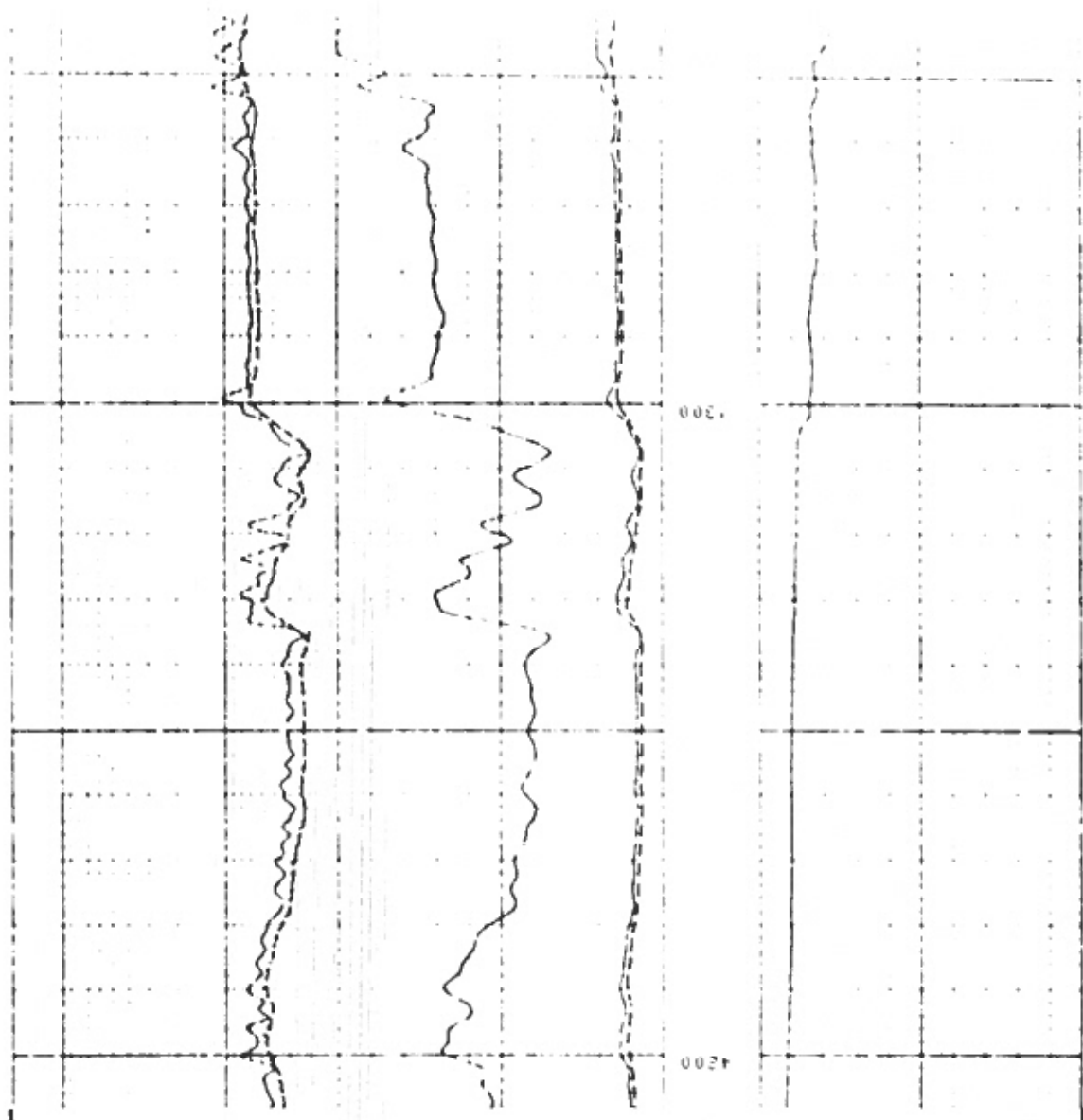
**BEST VALUE
AVAILABLE**



SP	10	FEET
TENS	10	FEET
PARAMETERS		
NAME	VALUE	UNIT
DSEC	3.20000	MMWD
MSEC	3.40000	MMWD
FEXP	2.15000	
BHS	OPEN	
DD	0.0	F
NAME	VALUE	UNIT
ES	7.87500	IN
SER	1.00000	OHMM
FPRI	1PHI	
FRUM	0.620000	

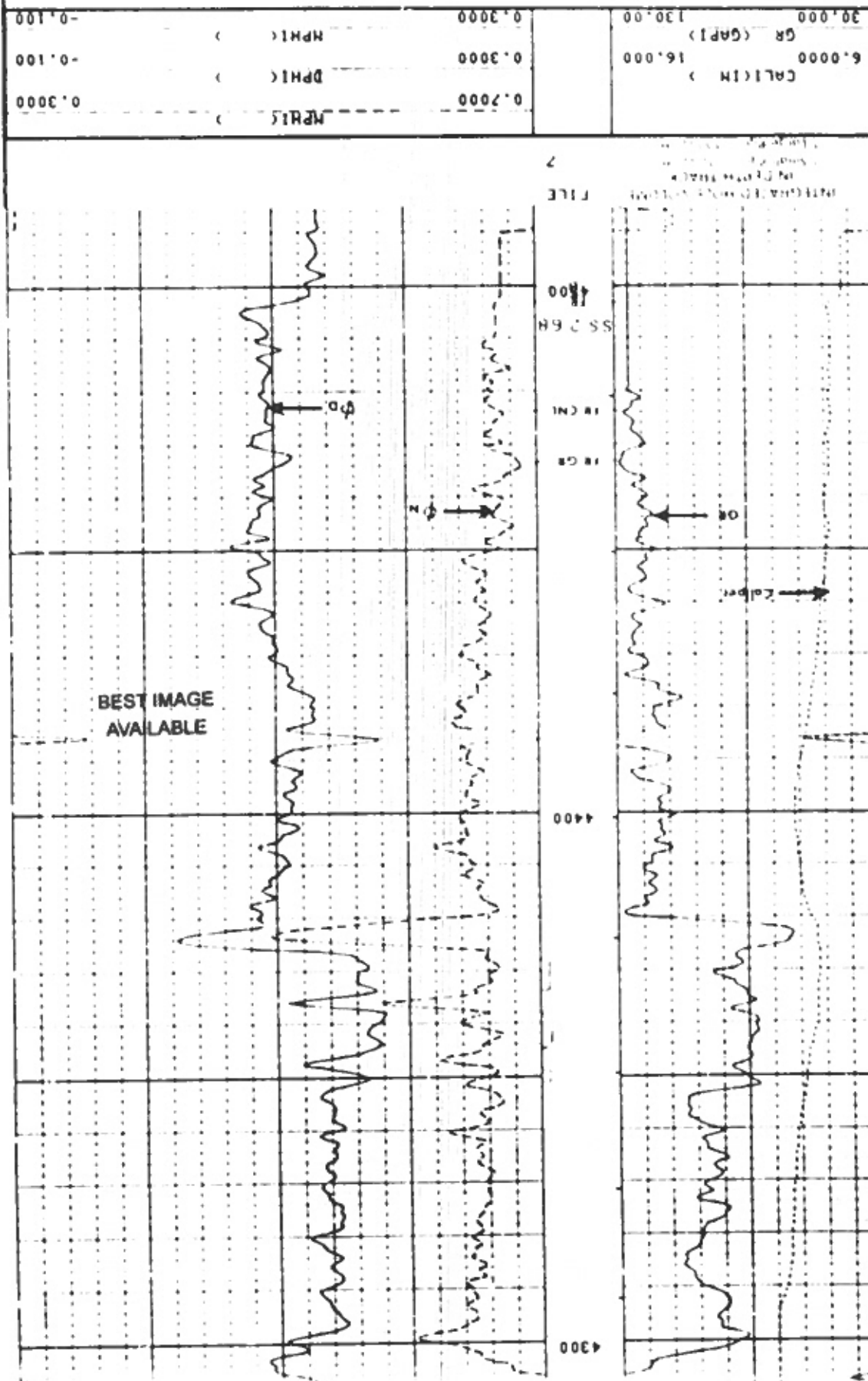
BEST IMAGE AVAILABLE		SP (MV)	-150.0
ILD (OHMM)	50.000	0.0	
SFLR (OHMM)	10.000	0.0	
SFLI (OHMM)	50.000	0.0	
SFLU (OHMM)	50.000	0.0200	
ILM (OHMM)	200.00	0.0200	
ILD (OHMM)	200.00	0.0200	

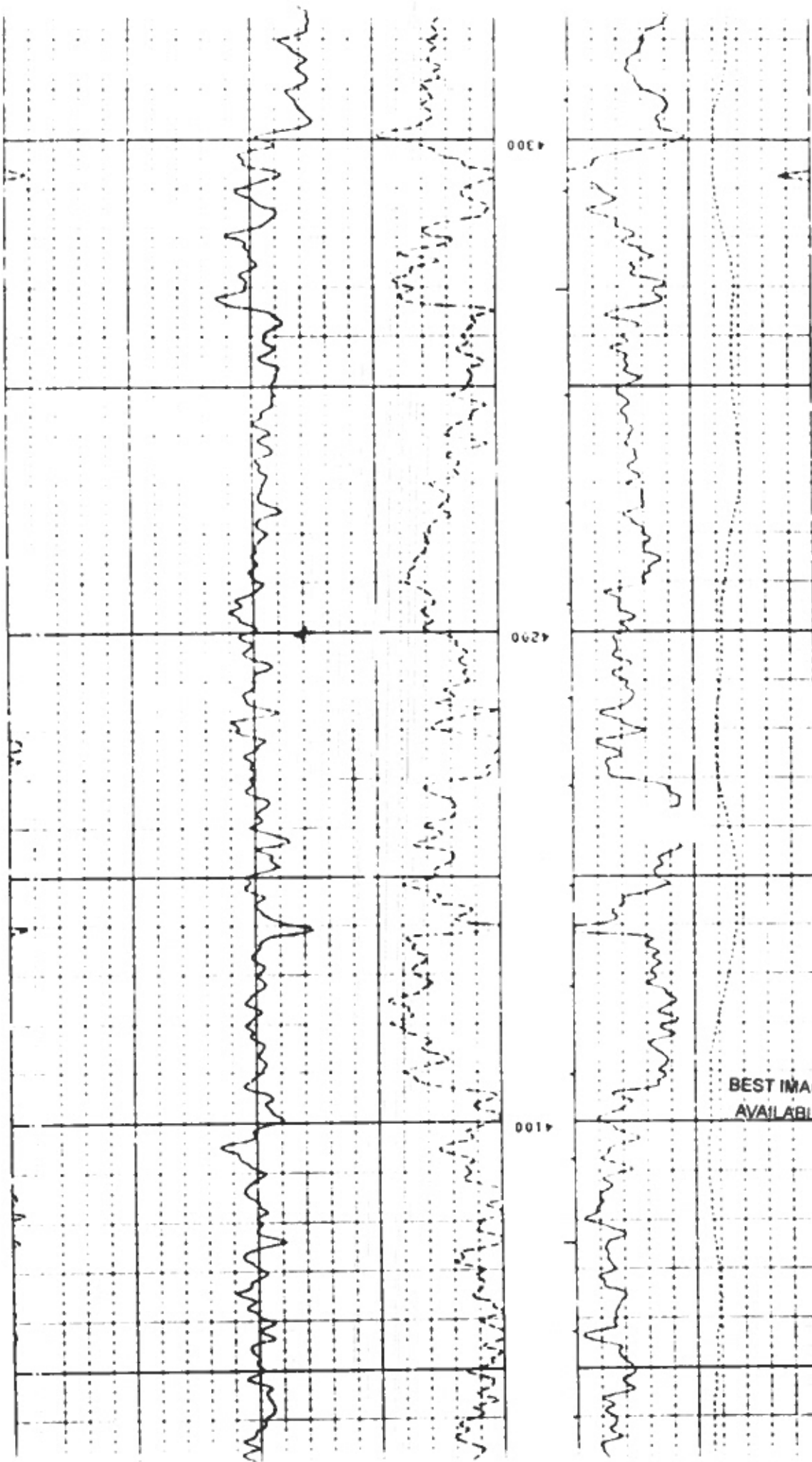
FILE REPEAT SECTION

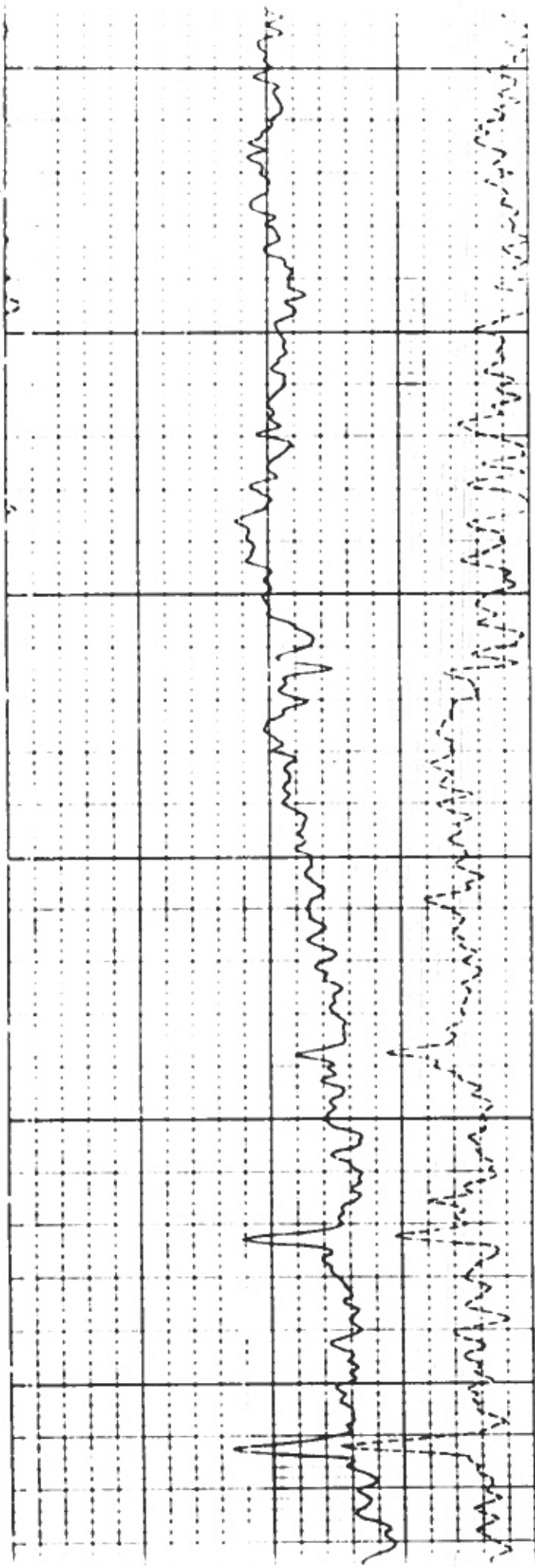


GR	32.3	FET1
MCHL	23.9	FET1
S52	3.0	FET1
L1TH	3.5	FET1
LU	3.2	FET1
CAL1	3.6	FET1

SENSOR MEASURE POINT TO TENSION REFERENCE POINT





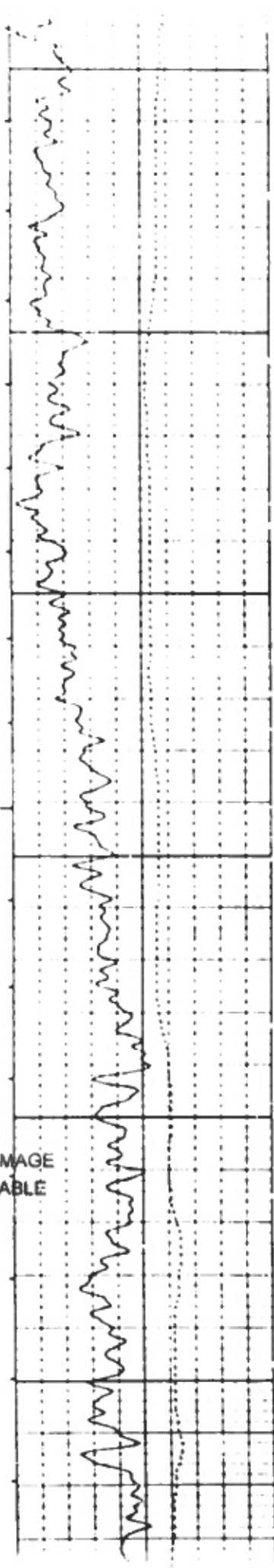


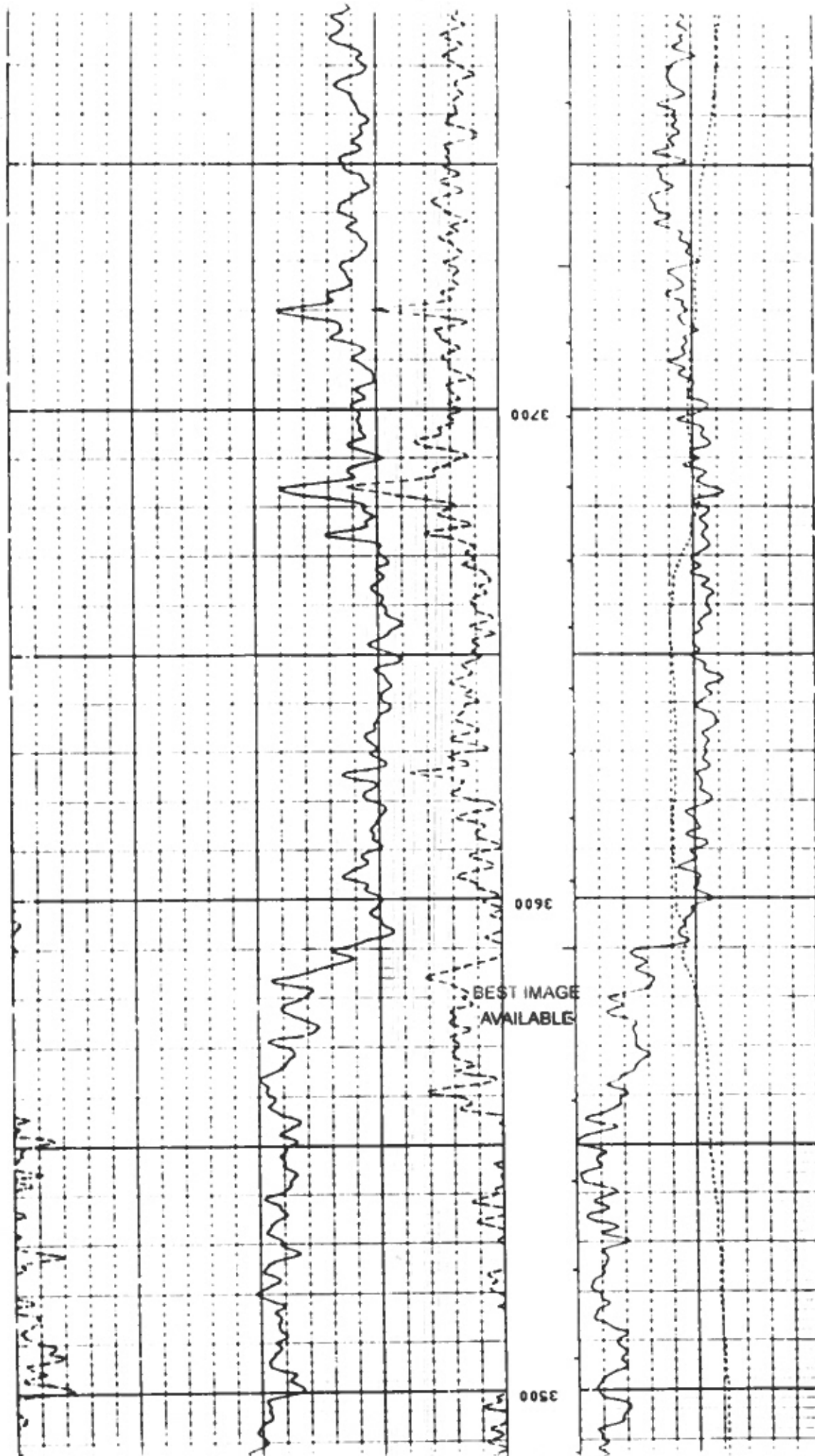
0000

006C

BEST IMAGE
AVAILABLE

008C





	BACKGROUND MEASURED		UNITS
	BEFORE	AFTER	
LL	18.43	18.34	CPS
LU	71.62	71.56	CPS
LS	54.25	54.15	CPS
LITH	5.468	5.42	CPS
SS1	15.07	15.03	CPS
SS2	10.44	10.42	CPS

FILE

9

CAL (IN)		NPHIC 2	
6.0000	16.000	0.7000	0.3000
GR (GAPI)		DPHIC)	
30.000	130.00	0.3000	-0.100
		NPHIC 2	
		0.3000	-0.100

INTEGRATED HOLE VOLUME
IN DEPTH TRACK

1 Small Pip = 10 cu ft
1 Large Pip = 100 cu ft

FILE

7

BEST IMAGE
AVAILABLE

