



September 10, 2018

Ms. Julie Murphy, Director
Colorado Oil and Gas Conservation Commission
The Chancery Building
1120 Lincoln Street, Suite 801
Denver, CO 80203

RE: Wetco 4-63-5-5764DB
Township 4 North, Range 63 West, 6" P.M.
Section 5: S/2S/2
Section 6: S/2S/2
Section 7: N/2N/2
Section 8: N/2N/2
Weld County, Colorado

Proposed Wellbore Unit (Containing 640 Acres, more or less):

Dear Ms. Julie Murphy:

HighPoint is planning to drill the captioned boundary well in accordance with the provisions of COGCC 318A.e.

HighPoint's wellbore spacing unit consists of Section 5: S/2S/2, Section 6: S/2S/2, Section 7: N/2N/2, and Section 8: N/2N/2 creating the above referenced spacing unit in which we will target the Niobrara formation. I certify that all of the owners within the proposed wellbore spacing unit were noticed and no objections were received.

Enclosed is a copy of the following document to assist you in your review and approval of HighPoint's proposed changes for the captioned well.

- Plat illustrating the proposed wellbore spacing unit on existing location plat

Thank you for your attention to the enclosed. HighPoint's respectfully requests that the COGCC review the enclosed information and approve the proposed changes for the captioned well.

If you have any questions, please contact me at 303-312-8145.

HIGHPOINT OPERATING CORPORATION

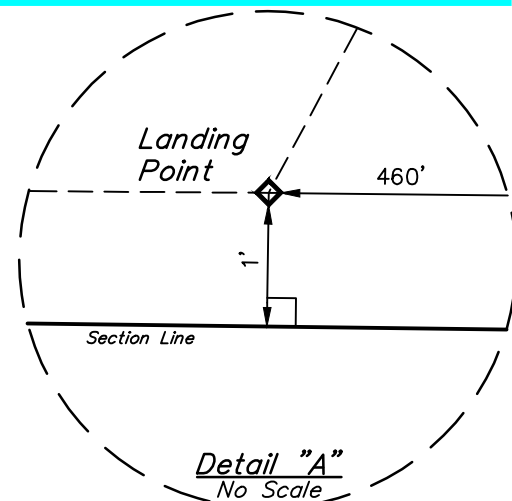
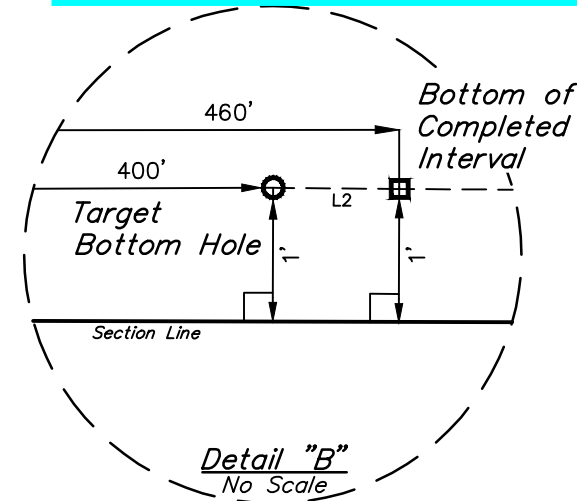
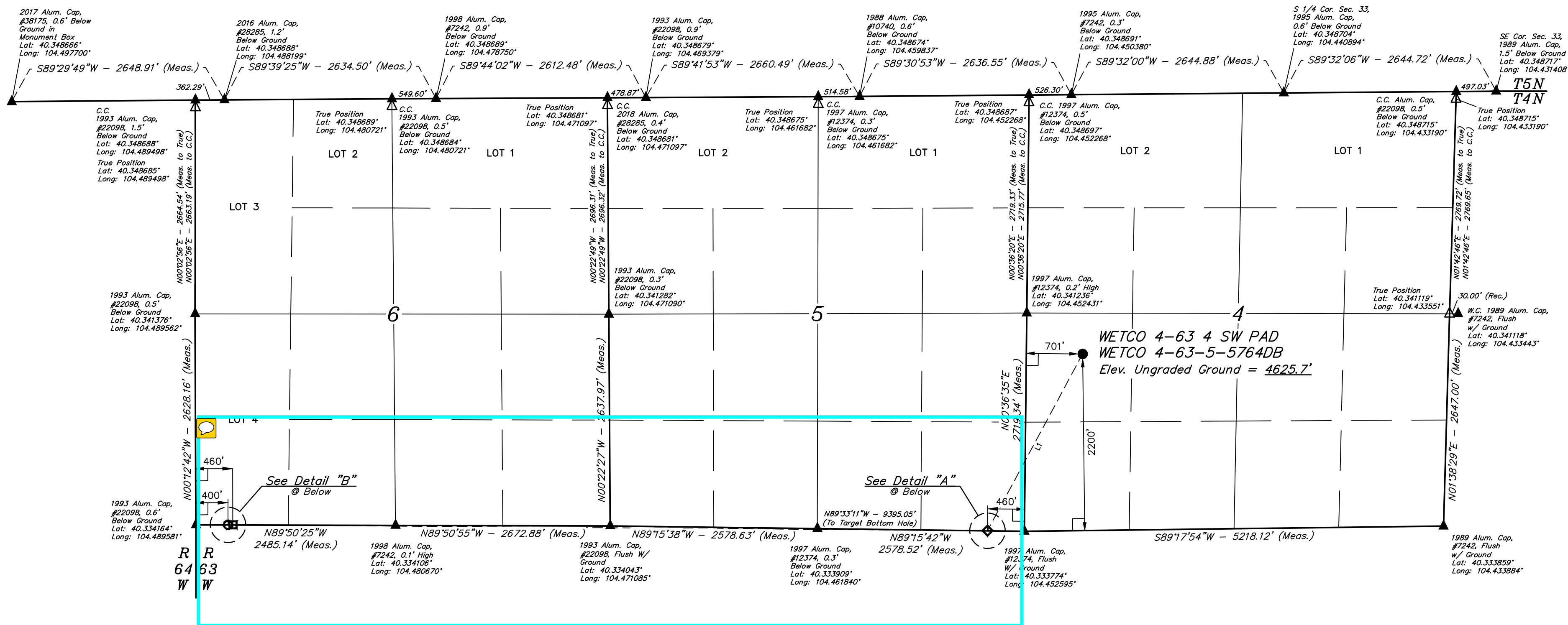
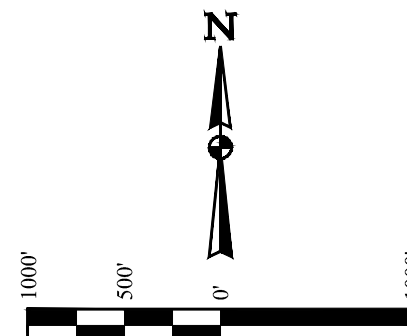
A handwritten signature in blue ink that reads "Delores Montoya". The signature is written in a cursive, flowing style.

Delores Montoya
Sr. Regulatory Analyst

WETCO 4-63 4 SW PAD
WETCO 4-63-5-5764DB
NW 1/4 SW 1/4, SECTION 4, T4N, R63W, 6th P.M.
WELD COUNTY, COLORADO

BASIS OF BEARINGS
TRANSVERSE MERCATOR PROJECTION WITH
A CENTRAL MERIDIAN OF W105°00'00".

BASIS OF ELEVATION
OPUS SOLUTION GENERATED NAVD 88



LEGEND:

- = 90° SYMBOL
- = PROPOSED WELLHEAD.
- ◆ = LANDING POINT.
- = BOTTOM OF COMPLETED INTERVAL.
- = TARGET BOTTOM HOLE.
- ▲ = SECTION CORNERS LOCATED. (NAD 83)
- △ = SECTION CORNERS RE-ESTABLISHED. (Not Set on Ground.) (NAD 83)

LINE TABLE		
LINE	DIRECTION	LENGTH
L1	S28°16'43"W	2500.52'
L2	N90°00'00"W	60.00'

PDOP = 1.2		
NAD 83 (SURFACE LOCATION)	NAD 83 (LANDING POINT)	NAD 83 (TARGET BOTTOM HOLE)
LATITUDE = 40°20'23.37" (40.339824°)	LATITUDE = 40°20'01.68" (40.333801°)	LATITUDE = 40°20'02.97" (40.334158°)
LONGITUDE = 104°26'59.81" (104.449947°)	LONGITUDE = 104°27'15.28" (104.454244°)	LONGITUDE = 104°29'17.33" (104.488147°)
NAD 27 (SURFACE LOCATION)	NAD 27 (LANDING POINT)	NAD 27 (TARGET BOTTOM HOLE)
LATITUDE = 40°20'23.43" (40.339843°)	LATITUDE = 40°20'01.75" (40.333820°)	LATITUDE = 40°20'03.04" (40.334177°)
LONGITUDE = 104°26'57.97" (104.449436°)	LONGITUDE = 104°27'13.44" (104.453733°)	LONGITUDE = 104°29'15.49" (104.487635°)
STATE PLANE NAD 83 (CO. NORTH)	STATE PLANE NAD 83 (CO. NORTH)	STATE PLANE NAD 83 (CO. NORTH)
N: 1368371.58' E: 3292703.31'	N: 1366163.51' E: 3291531.42'	N: 1366183.75' E: 3282079.20'
STATE PLANE NAD 27 (CO. NORTH)	STATE PLANE NAD 27 (CO. NORTH)	STATE PLANE NAD 27 (CO. NORTH)
N: 368373.60' E: 2292853.37'	N: 366165.57' E: 2291681.51'	N: 366185.77' E: 2282229.27'

CERTIFICATE OF RECORDING
THIS IS TO CERTIFY THAT THE ABOVE DESCRIBED SURVEY AND NOTES OF ACTUAL SURVEYS MADE BY ME OR UNDER MY SUPERVISION AND THAT THE SAME ARE TRUE AND CORRECT TO THE BEST OF MY KNOWLEDGE AND BELIEF.

REGISTERED LAND SURVEYOR
REGISTRATION NO. 28285
STATE OF COLORADO

REV: 01 07-30-18 J.U. (BCI ADDITION)



SURVEYED BY: RYAN WILLIAMS, C.M.
DRAWN BY: C.C.
07-24-18
07-25-18
SCALE: 1" = 1000'

WELL LOCATION PLAT