



PROJECT DETAILS: Weld County, CO NAD 83

Geodetic System: US State Plane 1983
Datum: North American Datum 1983
Ellipsoid: GRS 1980
Zone: Colorado Northern Zone
System Datum: Mean Sea Level
Local North: True

Plan: Plan 1 (Wetco 4-63-5-5764DB/OH)

Created By: Seth Burstad

Project: Weld County, CO NAD 83
Site: Wetco 4-63 4 SW Pad
Well: Wetco 4-63-5-5764DB
Wellbore: OH
Design: Plan 1



Azimuths to True North
Magnetic North: 8.05°

Magnetic Field
Strength: 52211.3nT
Dip Angle: 66.88°
Date: 8/7/2018
Model: HDGM

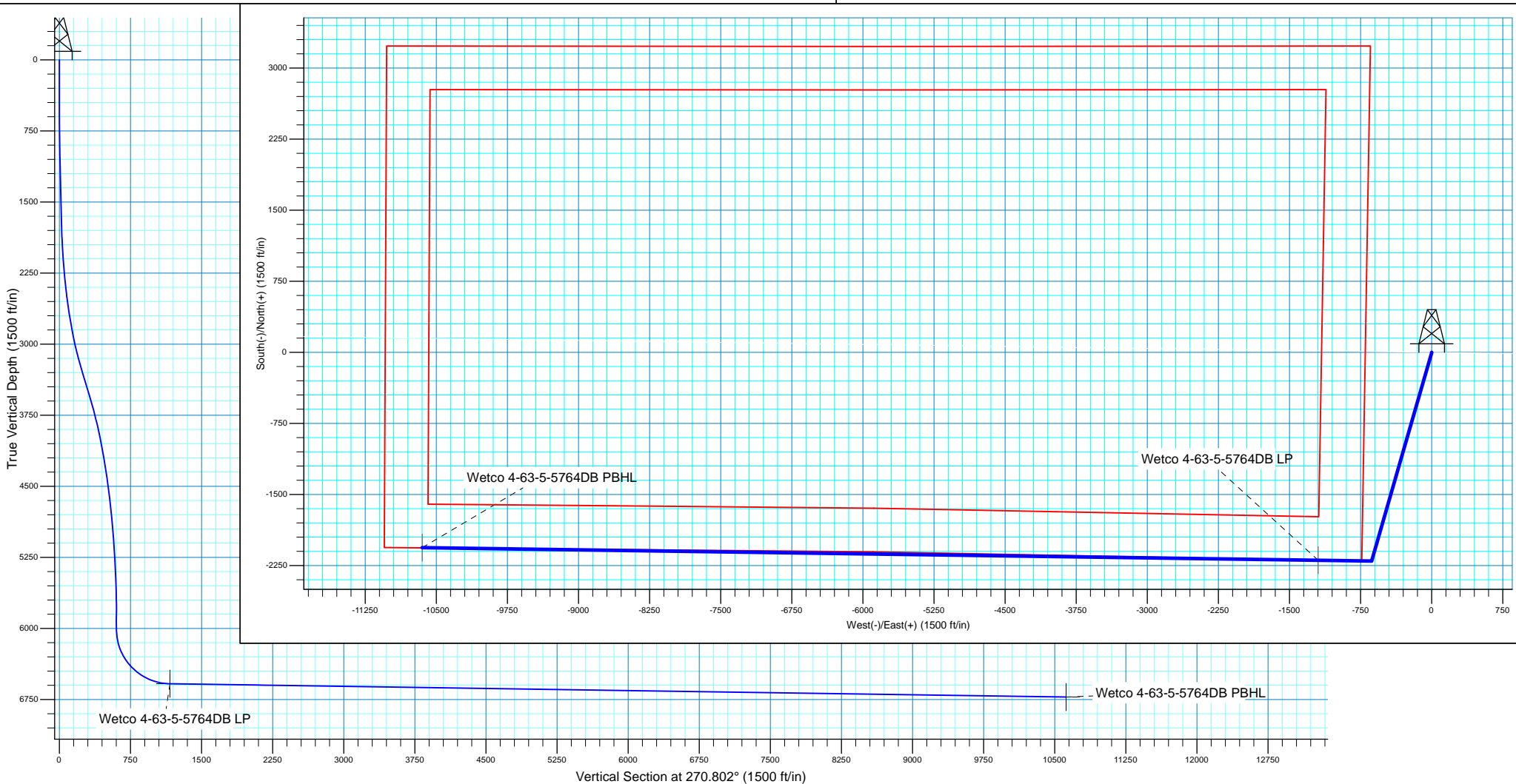


SECTION DETAILS

MD	Inc	Azi	TVD	+N/-S	+E/-W	Dleg	TFace	VSect
0.00	0.00	0.000	0.00	0.00	0.00	0.00	0.00	0.00
500.00	0.00	0.000	500.00	0.00	0.00	0.00	0.00	0.00
1000.00	5.00	196.051	999.37	-20.95	-6.03	1.00	196.05	5.73
1703.31	5.00	196.051	1700.00	-79.86	-22.98	0.00	0.00	21.86
3475.81	48.69	196.050	3243.46	-830.56	-238.95	2.46	0.00	227.30
3973.37	48.69	196.050	3571.92	-1189.72	-342.28	0.00	0.00	325.60
6607.18	0.00	0.000	5900.00	-2201.99	-633.51	1.85	180.00	602.63
6718.29	0.00	0.000	6011.11	-2201.99	-633.51	0.00	0.00	602.63
7609.81	89.15	270.802	6584.00	-2194.09	-1197.93	10.00	270.80	1167.10
17063.29	89.15	270.802	6724.00	-2061.77	-10649.45	0.00	0.00	10619.55

WELL DETAILS: Wetco 4-63-5-5764DB

GL 4629' & KB 20' @ 4649.00ft 4629.00				Longitude	
+N/-S	+E/-W	Northing	Easting	Latitude	
0.00	0.00	1368371.65	3292703.38	40° 20' 23.366 N	104° 26' 59.809 W





HighPoint Resources

Weld County, CO NAD 83

Wetco 4-63 4 SW Pad

Wetco 4-63-5-5764DB

OH

Plan: Plan 1

Standard Planning Report

07 August, 2018



Database:	Casper District	Local Co-ordinate Reference:	Well Wetco 4-63-5-5764DB
Company:	HighPoint Resources	TVD Reference:	GL 4629' & KB 20' @ 4649.00ft
Project:	Weld County, CO NAD 83	MD Reference:	GL 4629' & KB 20' @ 4649.00ft
Site:	Wetco 4-63 4 SW Pad	North Reference:	True
Well:	Wetco 4-63-5-5764DB	Survey Calculation Method:	Minimum Curvature
Wellbore:	OH		
Design:	Plan 1		

Project	Weld County, CO NAD 83		
Map System:	US State Plane 1983	System Datum:	Mean Sea Level
Geo Datum:	North American Datum 1983		
Map Zone:	Colorado Northern Zone		

Site		Wetco 4-63 4 SW Pad, Site Center : Wetco 4-63-5-4033CB			
Site Position:		Northing:	1,368,417.03 usft	Latitude:	40° 20' 23.806 N
From:	Lat/Long	Easting:	3,292,780.91 usft	Longitude:	104° 26' 58.801 W
Position Uncertainty:	0.00 ft	Slot Radius:	13.200 in	Grid Convergence:	0.68 °

Well	Wetco 4-63-5-5764DB, 2200' FSL 701' FWL Sec 4 T4N R63W					
Well Position	+N/-S	-44.46 ft	Northing:	1,368,371.65 usft	Latitude:	40° 20' 23.366 N
	+E/-W	-78.05 ft	Easting:	3,292,703.39 usft	Longitude:	104° 26' 59.809 W
Position Uncertainty		0.00 ft	Wellhead Elevation:	0.00 ft	Ground Level:	4,629.00 ft

Wellbore	OH				
Magnetics	Model Name	Sample Date	Declination (°)	Dip Angle (°)	Field Strength (nT)
	HDGM	8/7/2018	8.05	66.88	52,211

Design	Plan 1			
Audit Notes:				
Version:	Phase:	PLAN	Tie On Depth:	0.00
Vertical Section:	Depth From (TVD) (ft)	+N/-S (ft)	+E/-W (ft)	Direction (°)
	0.00	0.00	0.00	270.802

Plan Sections										
Measured Depth (ft)	Inclination (°)	Azimuth (°)	Vertical Depth (ft)	+N/-S (ft)	+E/-W (ft)	Dogleg Rate (°/100ft)	Build Rate (°/100ft)	Turn Rate (°/100ft)	TFO (°)	Target
0.00	0.00	0.000	0.00	0.00	0.00	0.00	0.00	0.00	0.00	
500.00	0.00	0.000	500.00	0.00	0.00	0.00	0.00	0.00	0.00	
1,000.00	5.00	196.051	999.37	-20.95	-6.03	1.00	1.00	0.00	196.05	
1,703.31	5.00	196.051	1,700.00	-79.86	-22.98	0.00	0.00	0.00	0.00	
3,475.81	48.69	196.050	3,243.46	-830.56	-238.95	2.46	2.46	0.00	0.00	
3,973.37	48.69	196.050	3,571.92	-1,189.72	-342.28	0.00	0.00	0.00	0.00	
6,607.18	0.00	0.000	5,900.00	-2,201.99	-633.51	1.85	-1.85	0.00	180.00	
6,718.29	0.00	0.000	6,011.11	-2,201.99	-633.51	0.00	0.00	0.00	0.00	
7,609.81	89.15	270.802	6,584.01	-2,194.09	-1,197.93	10.00	10.00	-10.01	270.80	
17,063.29	89.15	270.802	6,724.00	-2,061.77	-10,649.45	0.00	0.00	0.00	0.00	Wetco 4-63-5-5764DB

Database:	Casper District	Local Co-ordinate Reference:	Well Wetco 4-63-5-5764DB
Company:	HighPoint Resources	TVD Reference:	GL 4629' & KB 20' @ 4649.00ft
Project:	Weld County, CO NAD 83	MD Reference:	GL 4629' & KB 20' @ 4649.00ft
Site:	Wetco 4-63 4 SW Pad	North Reference:	True
Well:	Wetco 4-63-5-5764DB	Survey Calculation Method:	Minimum Curvature
Wellbore:	OH		
Design:	Plan 1		

Planned Survey									
Measured Depth (ft)	Inclination (°)	Azimuth (°)	Vertical Depth (ft)	+N/-S (ft)	+E/-W (ft)	Vertical Section (ft)	Dogleg Rate (°/100ft)	Build Rate (°/100ft)	Turn Rate (°/100ft)
0.00	0.00	0.000	0.00	0.00	0.00	0.00	0.00	0.00	0.00
100.00	0.00	0.000	100.00	0.00	0.00	0.00	0.00	0.00	0.00
200.00	0.00	0.000	200.00	0.00	0.00	0.00	0.00	0.00	0.00
300.00	0.00	0.000	300.00	0.00	0.00	0.00	0.00	0.00	0.00
400.00	0.00	0.000	400.00	0.00	0.00	0.00	0.00	0.00	0.00
500.00	0.00	0.000	500.00	0.00	0.00	0.00	0.00	0.00	0.00
Start Build 1.00									
600.00	1.00	196.051	599.99	-0.84	-0.24	0.23	1.00	1.00	0.00
700.00	2.00	196.051	699.96	-3.35	-0.97	0.92	1.00	1.00	0.00
800.00	3.00	196.051	799.86	-7.55	-2.17	2.07	1.00	1.00	0.00
900.00	4.00	196.051	899.68	-13.41	-3.86	3.67	1.00	1.00	0.00
1,000.00	5.00	196.051	999.37	-20.95	-6.03	5.73	1.00	1.00	0.00
Start 703.31 hold at 1000.00 MD									
1,100.00	5.00	196.051	1,098.99	-29.33	-8.44	8.03	0.00	0.00	0.00
1,200.00	5.00	196.051	1,198.60	-37.70	-10.85	10.32	0.00	0.00	0.00
1,300.00	5.00	196.051	1,298.22	-46.08	-13.26	12.61	0.00	0.00	0.00
1,400.00	5.00	196.051	1,397.84	-54.46	-15.67	14.90	0.00	0.00	0.00
1,500.00	5.00	196.051	1,497.46	-62.83	-18.08	17.20	0.00	0.00	0.00
1,600.00	5.00	196.051	1,597.08	-71.21	-20.49	19.49	0.00	0.00	0.00
1,700.00	5.00	196.051	1,696.70	-79.58	-22.90	21.78	0.00	0.00	0.00
1,703.31	5.00	196.051	1,700.00	-79.86	-22.98	21.86	0.00	0.00	0.00
Start DLS 2.46 TFO 0.00									
1,800.00	7.38	196.051	1,796.12	-89.88	-25.86	24.60	2.46	2.46	0.00
1,900.00	9.85	196.051	1,894.98	-104.28	-30.00	28.54	2.46	2.46	0.00
2,000.00	12.31	196.051	1,993.11	-122.75	-35.31	33.59	2.46	2.46	0.00
2,100.00	14.78	196.051	2,090.32	-145.25	-41.79	39.75	2.46	2.46	0.00
2,200.00	17.24	196.051	2,186.44	-171.75	-49.41	47.01	2.46	2.46	0.00
2,300.00	19.71	196.051	2,281.27	-202.21	-58.18	55.34	2.46	2.46	0.00
2,400.00	22.17	196.051	2,374.66	-236.55	-68.06	64.74	2.46	2.46	0.00
2,500.00	24.64	196.050	2,466.43	-274.72	-79.04	75.18	2.46	2.46	0.00
2,600.00	27.10	196.050	2,556.40	-316.65	-91.10	86.66	2.46	2.46	0.00
2,700.00	29.57	196.050	2,644.41	-362.25	-104.22	99.14	2.46	2.46	0.00
2,800.00	32.03	196.050	2,730.30	-411.46	-118.38	112.61	2.46	2.46	0.00
2,900.00	34.50	196.050	2,813.91	-464.16	-133.54	127.03	2.46	2.46	0.00
3,000.00	36.96	196.050	2,895.09	-520.28	-149.68	142.39	2.46	2.46	0.00
3,100.00	39.43	196.050	2,973.67	-579.69	-166.78	158.65	2.46	2.46	0.00
3,200.00	41.89	196.050	3,049.53	-642.30	-184.79	175.78	2.46	2.46	0.00
3,300.00	44.35	196.050	3,122.51	-707.99	-203.69	193.76	2.46	2.46	0.00
3,400.00	46.82	196.050	3,192.49	-776.63	-223.44	212.54	2.46	2.46	0.00
3,475.81	48.69	196.050	3,243.46	-830.56	-238.95	227.30	2.46	2.46	0.00
Start 497.56 hold at 3475.81 MD									
3,500.00	48.69	196.050	3,259.43	-848.02	-243.98	232.08	0.00	0.00	0.00
3,600.00	48.69	196.050	3,325.44	-920.21	-264.74	251.84	0.00	0.00	0.00
3,700.00	48.69	196.050	3,391.46	-992.39	-285.51	271.59	0.00	0.00	0.00
3,800.00	48.69	196.050	3,457.47	-1,064.58	-306.28	291.35	0.00	0.00	0.00
3,900.00	48.69	196.050	3,523.49	-1,136.76	-327.05	311.10	0.00	0.00	0.00
3,973.37	48.69	196.050	3,571.92	-1,189.72	-342.28	325.60	0.00	0.00	0.00
Start Drop -1.85									
4,000.00	48.20	196.050	3,589.59	-1,208.87	-347.79	330.84	1.85	-1.85	0.00
4,100.00	46.35	196.050	3,657.44	-1,279.46	-368.10	350.16	1.85	-1.85	0.00
4,200.00	44.50	196.050	3,727.62	-1,347.92	-387.79	368.89	1.85	-1.85	0.00
4,300.00	42.65	196.050	3,800.07	-1,414.16	-406.85	387.02	1.85	-1.85	0.00
4,400.00	40.80	196.050	3,874.70	-1,478.12	-425.25	404.52	1.85	-1.85	0.00
4,500.00	38.95	196.050	3,951.44	-1,539.73	-442.98	421.38	1.85	-1.85	0.00

Database:	Casper District	Local Co-ordinate Reference:	Well Wetco 4-63-5-5764DB
Company:	HighPoint Resources	TVD Reference:	GL 4629' & KB 20' @ 4649.00ft
Project:	Weld County, CO NAD 83	MD Reference:	GL 4629' & KB 20' @ 4649.00ft
Site:	Wetco 4-63 4 SW Pad	North Reference:	True
Well:	Wetco 4-63-5-5764DB	Survey Calculation Method:	Minimum Curvature
Wellbore:	OH		
Design:	Plan 1		

Planned Survey									
Measured Depth (ft)	Inclination (°)	Azimuth (°)	Vertical Depth (ft)	+N/-S (ft)	+E/-W (ft)	Vertical Section (ft)	Dogleg Rate (°/100ft)	Build Rate (°/100ft)	Turn Rate (°/100ft)
4,600.00	37.10	196.050	4,030.20	-1,598.93	-460.01	437.59	1.85	-1.85	0.00
4,700.00	35.26	196.050	4,110.92	-1,655.66	-476.33	453.11	1.85	-1.85	0.00
4,800.00	33.41	196.050	4,193.49	-1,709.86	-491.92	467.94	1.85	-1.85	0.00
4,900.00	31.56	196.050	4,277.84	-1,761.47	-506.77	482.07	1.85	-1.85	0.00
5,000.00	29.71	196.050	4,363.88	-1,810.43	-520.86	495.47	1.85	-1.85	0.00
5,100.00	27.86	196.050	4,451.52	-1,856.71	-534.17	508.13	1.85	-1.85	0.00
5,200.00	26.01	196.050	4,540.67	-1,900.24	-546.70	520.05	1.85	-1.85	0.00
5,300.00	24.16	196.050	4,631.23	-1,940.99	-558.42	531.20	1.85	-1.85	0.00
5,400.00	22.32	196.050	4,723.11	-1,978.91	-569.33	541.57	1.85	-1.85	0.00
5,500.00	20.47	196.050	4,816.22	-2,013.96	-579.41	551.17	1.85	-1.85	0.00
5,600.00	18.62	196.050	4,910.45	-2,046.10	-588.66	559.96	1.85	-1.85	0.00
5,700.00	16.77	196.050	5,005.72	-2,075.31	-597.06	567.96	1.85	-1.85	0.00
5,800.00	14.92	196.050	5,101.91	-2,101.55	-604.61	575.14	1.85	-1.85	0.00
5,900.00	13.07	196.050	5,198.94	-2,124.79	-611.30	581.50	1.85	-1.85	0.00
6,000.00	11.22	196.050	5,296.70	-2,145.02	-617.12	587.03	1.85	-1.85	0.00
6,100.00	9.38	196.050	5,395.08	-2,162.20	-622.06	591.74	1.85	-1.85	0.00
6,200.00	7.53	196.050	5,493.99	-2,176.32	-626.13	595.60	1.85	-1.85	0.00
6,300.00	5.68	196.050	5,593.32	-2,187.37	-629.30	598.63	1.85	-1.85	0.00
6,400.00	3.83	196.050	5,692.97	-2,195.34	-631.60	600.81	1.85	-1.85	0.00
6,500.00	1.98	196.050	5,792.84	-2,200.21	-633.00	602.14	1.85	-1.85	0.00
6,600.00	0.13	196.050	5,892.82	-2,201.98	-633.51	602.62	1.85	-1.85	0.00
6,607.18	0.00	0.000	5,900.00	-2,201.99	-633.51	602.63	1.85	-1.85	0.00
Start 111.11 hold at 6607.18 MD									
6,700.00	0.00	0.000	5,992.82	-2,201.99	-633.51	602.63	0.00	0.00	0.00
6,718.29	0.00	0.000	6,011.11	-2,201.99	-633.51	602.63	0.00	0.00	0.00
Start DLS 10.00 TFO 270.80									
6,800.00	8.17	270.802	6,092.54	-2,201.91	-639.33	608.44	10.00	10.00	0.00
6,900.00	18.17	270.802	6,189.79	-2,201.59	-662.08	631.20	10.00	10.00	0.00
7,000.00	28.17	270.802	6,281.61	-2,201.04	-701.37	670.50	10.00	10.00	0.00
7,100.00	38.17	270.802	6,365.20	-2,200.28	-756.01	725.14	10.00	10.00	0.00
7,200.00	48.17	270.802	6,438.04	-2,199.32	-824.34	793.47	10.00	10.00	0.00
7,300.00	58.17	270.802	6,497.91	-2,198.20	-904.27	873.41	10.00	10.00	0.00
7,400.00	68.17	270.802	6,542.99	-2,196.95	-993.38	962.54	10.00	10.00	0.00
7,500.00	78.17	270.802	6,571.90	-2,195.61	-1,088.97	1,058.13	10.00	10.00	0.00
7,600.00	88.17	270.802	6,583.78	-2,194.23	-1,188.13	1,157.30	10.00	10.00	0.00
7,609.81	89.15	270.802	6,584.01	-2,194.09	-1,197.93	1,167.10	10.00	10.00	0.00
Start 9453.48 hold at 7609.81 MD									
7,700.00	89.15	270.802	6,585.34	-2,192.83	-1,288.10	1,257.28	0.00	0.00	0.00
7,800.00	89.15	270.802	6,586.82	-2,191.43	-1,388.08	1,357.27	0.00	0.00	0.00
7,900.00	89.15	270.802	6,588.30	-2,190.03	-1,488.06	1,457.26	0.00	0.00	0.00
8,000.00	89.15	270.802	6,589.78	-2,188.63	-1,588.04	1,557.25	0.00	0.00	0.00
8,100.00	89.15	270.802	6,591.26	-2,187.23	-1,688.02	1,657.24	0.00	0.00	0.00
8,200.00	89.15	270.802	6,592.75	-2,185.83	-1,788.00	1,757.23	0.00	0.00	0.00
8,300.00	89.15	270.802	6,594.23	-2,184.43	-1,887.98	1,857.22	0.00	0.00	0.00
8,400.00	89.15	270.802	6,595.71	-2,183.03	-1,987.96	1,957.21	0.00	0.00	0.00
8,500.00	89.15	270.802	6,597.19	-2,181.63	-2,087.94	2,057.20	0.00	0.00	0.00
8,600.00	89.15	270.802	6,598.67	-2,180.23	-2,187.92	2,157.19	0.00	0.00	0.00
8,700.00	89.15	270.802	6,600.15	-2,178.83	-2,287.90	2,257.17	0.00	0.00	0.00
8,800.00	89.15	270.802	6,601.63	-2,177.43	-2,387.88	2,357.16	0.00	0.00	0.00
8,900.00	89.15	270.802	6,603.11	-2,176.03	-2,487.85	2,457.15	0.00	0.00	0.00
9,000.00	89.15	270.802	6,604.59	-2,174.63	-2,587.83	2,557.14	0.00	0.00	0.00
9,100.00	89.15	270.802	6,606.07	-2,173.23	-2,687.81	2,657.13	0.00	0.00	0.00
9,200.00	89.15	270.802	6,607.55	-2,171.83	-2,787.79	2,757.12	0.00	0.00	0.00

Database:	Casper District	Local Co-ordinate Reference:	Well Wetco 4-63-5-5764DB
Company:	HighPoint Resources	TVD Reference:	GL 4629' & KB 20' @ 4649.00ft
Project:	Weld County, CO NAD 83	MD Reference:	GL 4629' & KB 20' @ 4649.00ft
Site:	Wetco 4-63 4 SW Pad	North Reference:	True
Well:	Wetco 4-63-5-5764DB	Survey Calculation Method:	Minimum Curvature
Wellbore:	OH		
Design:	Plan 1		

Planned Survey									
Measured Depth (ft)	Inclination (°)	Azimuth (°)	Vertical Depth (ft)	+N/-S (ft)	+E/-W (ft)	Vertical Section (ft)	Dogleg Rate (°/100ft)	Build Rate (°/100ft)	Turn Rate (°/100ft)
9,300.00	89.15	270.802	6,609.03	-2,170.43	-2,887.77	2,857.11	0.00	0.00	0.00
9,400.00	89.15	270.802	6,610.52	-2,169.03	-2,987.75	2,957.10	0.00	0.00	0.00
9,500.00	89.15	270.802	6,612.00	-2,167.63	-3,087.73	3,057.09	0.00	0.00	0.00
9,600.00	89.15	270.802	6,613.48	-2,166.23	-3,187.71	3,157.08	0.00	0.00	0.00
9,700.00	89.15	270.802	6,614.96	-2,164.83	-3,287.69	3,257.06	0.00	0.00	0.00
9,800.00	89.15	270.802	6,616.44	-2,163.43	-3,387.67	3,357.05	0.00	0.00	0.00
9,900.00	89.15	270.802	6,617.92	-2,162.03	-3,487.65	3,457.04	0.00	0.00	0.00
10,000.00	89.15	270.802	6,619.40	-2,160.63	-3,587.63	3,557.03	0.00	0.00	0.00
10,100.00	89.15	270.802	6,620.88	-2,159.23	-3,687.61	3,657.02	0.00	0.00	0.00
10,200.00	89.15	270.802	6,622.36	-2,157.83	-3,787.58	3,757.01	0.00	0.00	0.00
10,300.00	89.15	270.802	6,623.84	-2,156.44	-3,887.56	3,857.00	0.00	0.00	0.00
10,400.00	89.15	270.802	6,625.32	-2,155.04	-3,987.54	3,956.99	0.00	0.00	0.00
10,500.00	89.15	270.802	6,626.81	-2,153.64	-4,087.52	4,056.98	0.00	0.00	0.00
10,600.00	89.15	270.802	6,628.29	-2,152.24	-4,187.50	4,156.97	0.00	0.00	0.00
10,700.00	89.15	270.802	6,629.77	-2,150.84	-4,287.48	4,256.96	0.00	0.00	0.00
10,800.00	89.15	270.802	6,631.25	-2,149.44	-4,387.46	4,356.94	0.00	0.00	0.00
10,900.00	89.15	270.802	6,632.73	-2,148.04	-4,487.44	4,456.93	0.00	0.00	0.00
11,000.00	89.15	270.802	6,634.21	-2,146.64	-4,587.42	4,556.92	0.00	0.00	0.00
11,100.00	89.15	270.802	6,635.69	-2,145.24	-4,687.40	4,656.91	0.00	0.00	0.00
11,200.00	89.15	270.802	6,637.17	-2,143.84	-4,787.38	4,756.90	0.00	0.00	0.00
11,300.00	89.15	270.802	6,638.65	-2,142.44	-4,887.36	4,856.89	0.00	0.00	0.00
11,400.00	89.15	270.802	6,640.13	-2,141.04	-4,987.34	4,956.88	0.00	0.00	0.00
11,500.00	89.15	270.802	6,641.61	-2,139.64	-5,087.31	5,056.87	0.00	0.00	0.00
11,600.00	89.15	270.802	6,643.10	-2,138.24	-5,187.29	5,156.86	0.00	0.00	0.00
11,700.00	89.15	270.802	6,644.58	-2,136.84	-5,287.27	5,256.85	0.00	0.00	0.00
11,800.00	89.15	270.802	6,646.06	-2,135.44	-5,387.25	5,356.83	0.00	0.00	0.00
11,900.00	89.15	270.802	6,647.54	-2,134.04	-5,487.23	5,456.82	0.00	0.00	0.00
12,000.00	89.15	270.802	6,649.02	-2,132.64	-5,587.21	5,556.81	0.00	0.00	0.00
12,100.00	89.15	270.802	6,650.50	-2,131.24	-5,687.19	5,656.80	0.00	0.00	0.00
12,200.00	89.15	270.802	6,651.98	-2,129.84	-5,787.17	5,756.79	0.00	0.00	0.00
12,300.00	89.15	270.802	6,653.46	-2,128.44	-5,887.15	5,856.78	0.00	0.00	0.00
12,400.00	89.15	270.802	6,654.94	-2,127.04	-5,987.13	5,956.77	0.00	0.00	0.00
12,500.00	89.15	270.802	6,656.42	-2,125.64	-6,087.11	6,056.76	0.00	0.00	0.00
12,600.00	89.15	270.802	6,657.90	-2,124.24	-6,187.09	6,156.75	0.00	0.00	0.00
12,700.00	89.15	270.802	6,659.38	-2,122.84	-6,287.07	6,256.74	0.00	0.00	0.00
12,800.00	89.15	270.802	6,660.87	-2,121.44	-6,387.04	6,356.73	0.00	0.00	0.00
12,900.00	89.15	270.802	6,662.35	-2,120.04	-6,487.02	6,456.71	0.00	0.00	0.00
13,000.00	89.15	270.802	6,663.83	-2,118.64	-6,587.00	6,556.70	0.00	0.00	0.00
13,100.00	89.15	270.802	6,665.31	-2,117.25	-6,686.98	6,656.69	0.00	0.00	0.00
13,200.00	89.15	270.802	6,666.79	-2,115.85	-6,786.96	6,756.68	0.00	0.00	0.00
13,300.00	89.15	270.802	6,668.27	-2,114.45	-6,886.94	6,856.67	0.00	0.00	0.00
13,400.00	89.15	270.802	6,669.75	-2,113.05	-6,986.92	6,956.66	0.00	0.00	0.00
13,500.00	89.15	270.802	6,671.23	-2,111.65	-7,086.90	7,056.65	0.00	0.00	0.00
13,600.00	89.15	270.802	6,672.71	-2,110.25	-7,186.88	7,156.64	0.00	0.00	0.00
13,700.00	89.15	270.802	6,674.19	-2,108.85	-7,286.86	7,256.63	0.00	0.00	0.00
13,800.00	89.15	270.802	6,675.67	-2,107.45	-7,386.84	7,356.62	0.00	0.00	0.00
13,900.00	89.15	270.802	6,677.16	-2,106.05	-7,486.82	7,456.60	0.00	0.00	0.00
14,000.00	89.15	270.802	6,678.64	-2,104.65	-7,586.80	7,556.59	0.00	0.00	0.00
14,100.00	89.15	270.802	6,680.12	-2,103.25	-7,686.77	7,656.58	0.00	0.00	0.00
14,200.00	89.15	270.802	6,681.60	-2,101.85	-7,786.75	7,756.57	0.00	0.00	0.00
14,300.00	89.15	270.802	6,683.08	-2,100.45	-7,886.73	7,856.56	0.00	0.00	0.00
14,400.00	89.15	270.802	6,684.56	-2,099.05	-7,986.71	7,956.55	0.00	0.00	0.00
14,500.00	89.15	270.802	6,686.04	-2,097.65	-8,086.69	8,056.54	0.00	0.00	0.00
14,600.00	89.15	270.802	6,687.52	-2,096.25	-8,186.67	8,156.53	0.00	0.00	0.00

Database:	Casper District	Local Co-ordinate Reference:	Well Wetco 4-63-5-5764DB
Company:	HighPoint Resources	TVD Reference:	GL 4629' & KB 20' @ 4649.00ft
Project:	Weld County, CO NAD 83	MD Reference:	GL 4629' & KB 20' @ 4649.00ft
Site:	Wetco 4-63 4 SW Pad	North Reference:	True
Well:	Wetco 4-63-5-5764DB	Survey Calculation Method:	Minimum Curvature
Wellbore:	OH		
Design:	Plan 1		

Planned Survey									
Measured Depth (ft)	Inclination (°)	Azimuth (°)	Vertical Depth (ft)	+N/-S (ft)	+E/-W (ft)	Vertical Section (ft)	Dogleg Rate (°/100ft)	Build Rate (°/100ft)	Turn Rate (°/100ft)
14,700.00	89.15	270.802	6,689.00	-2,094.85	-8,286.65	8,256.52	0.00	0.00	0.00
14,800.00	89.15	270.802	6,690.48	-2,093.45	-8,386.63	8,356.51	0.00	0.00	0.00
14,900.00	89.15	270.802	6,691.96	-2,092.05	-8,486.61	8,456.49	0.00	0.00	0.00
15,000.00	89.15	270.802	6,693.45	-2,090.65	-8,586.59	8,556.48	0.00	0.00	0.00
15,100.00	89.15	270.802	6,694.93	-2,089.25	-8,686.57	8,656.47	0.00	0.00	0.00
15,200.00	89.15	270.802	6,696.41	-2,087.85	-8,786.55	8,756.46	0.00	0.00	0.00
15,300.00	89.15	270.802	6,697.89	-2,086.45	-8,886.53	8,856.45	0.00	0.00	0.00
15,400.00	89.15	270.802	6,699.37	-2,085.05	-8,986.51	8,956.44	0.00	0.00	0.00
15,500.00	89.15	270.802	6,700.85	-2,083.65	-9,086.48	9,056.43	0.00	0.00	0.00
15,600.00	89.15	270.802	6,702.33	-2,082.25	-9,186.46	9,156.42	0.00	0.00	0.00
15,700.00	89.15	270.802	6,703.81	-2,080.85	-9,286.44	9,256.41	0.00	0.00	0.00
15,800.00	89.15	270.802	6,705.29	-2,079.45	-9,386.42	9,356.40	0.00	0.00	0.00
15,900.00	89.15	270.802	6,706.77	-2,078.05	-9,486.40	9,456.39	0.00	0.00	0.00
16,000.00	89.15	270.802	6,708.25	-2,076.66	-9,586.38	9,556.37	0.00	0.00	0.00
16,100.00	89.15	270.802	6,709.73	-2,075.26	-9,686.36	9,656.36	0.00	0.00	0.00
16,200.00	89.15	270.802	6,711.22	-2,073.86	-9,786.34	9,756.35	0.00	0.00	0.00
16,300.00	89.15	270.802	6,712.70	-2,072.46	-9,886.32	9,856.34	0.00	0.00	0.00
16,400.00	89.15	270.802	6,714.18	-2,071.06	-9,986.30	9,956.33	0.00	0.00	0.00
16,500.00	89.15	270.802	6,715.66	-2,069.66	-10,086.28	10,056.32	0.00	0.00	0.00
16,600.00	89.15	270.802	6,717.14	-2,068.26	-10,186.26	10,156.31	0.00	0.00	0.00
16,700.00	89.15	270.802	6,718.62	-2,066.86	-10,286.24	10,256.30	0.00	0.00	0.00
16,800.00	89.15	270.802	6,720.10	-2,065.46	-10,386.21	10,356.29	0.00	0.00	0.00
16,900.00	89.15	270.802	6,721.58	-2,064.06	-10,486.19	10,456.28	0.00	0.00	0.00
17,000.00	89.15	270.802	6,723.06	-2,062.66	-10,586.17	10,556.26	0.00	0.00	0.00
17,063.29	89.15	270.802	6,724.00	-2,061.77	-10,649.45	10,619.55	0.00	0.00	0.00
TD at 17063.29									

Design Targets									
Target Name	Dip Angle (°)	Dip Dir. (°)	TVD (ft)	+N/-S (ft)	+E/-W (ft)	Northing (usft)	Easting (usft)	Latitude	Longitude
- hit/miss target									
- Shape									
Wetco 4-63-5-5764DB L	0.00	0.000	6,584.00	-2,194.09	-1,197.93	1,366,163.53	3,291,531.52	40° 20' 1.684 N	104° 27' 15.278 W
- plan misses target center by 0.01ft at 7609.81ft MD (6584.00 TVD, -2194.09 N, -1197.93 E)									
- Point									
Wetco 4-63-5-5764DB P	0.00	0.000	6,724.00	-2,061.77	-10,649.45	1,366,183.92	3,282,079.12	40° 20' 2.969 N	104° 29' 17.329 W
- plan hits target center									
- Point									

Database:	Casper District	Local Co-ordinate Reference:	Well Wetco 4-63-5-5764DB
Company:	HighPoint Resources	TVD Reference:	GL 4629' & KB 20' @ 4649.00ft
Project:	Weld County, CO NAD 83	MD Reference:	GL 4629' & KB 20' @ 4649.00ft
Site:	Wetco 4-63 4 SW Pad	North Reference:	True
Well:	Wetco 4-63-5-5764DB	Survey Calculation Method:	Minimum Curvature
Wellbore:	OH		
Design:	Plan 1		

Plan Annotations				
Measured Depth (ft)	Vertical Depth (ft)	Local Coordinates		Comment
		+N/-S (ft)	+E/-W (ft)	
500.00	500.00	0.00	0.00	Start Build 1.00
1,000.00	999.37	-20.95	-6.03	Start 703.31 hold at 1000.00 MD
1,703.31	1,700.00	-79.86	-22.98	Start DLS 2.46 TFO 0.00
3,475.81	3,243.46	-830.56	-238.95	Start 497.56 hold at 3475.81 MD
3,973.37	3,571.92	-1,189.72	-342.28	Start Drop -1.85
6,607.18	5,900.00	-2,201.99	-633.51	Start 111.11 hold at 6607.18 MD
6,718.29	6,011.11	-2,201.99	-633.51	Start DLS 10.00 TFO 270.80
7,609.81	6,584.01	-2,194.09	-1,197.93	Start 9453.48 hold at 7609.81 MD
17,063.29	6,724.00	-2,061.77	-10,649.45	TD at 17063.29