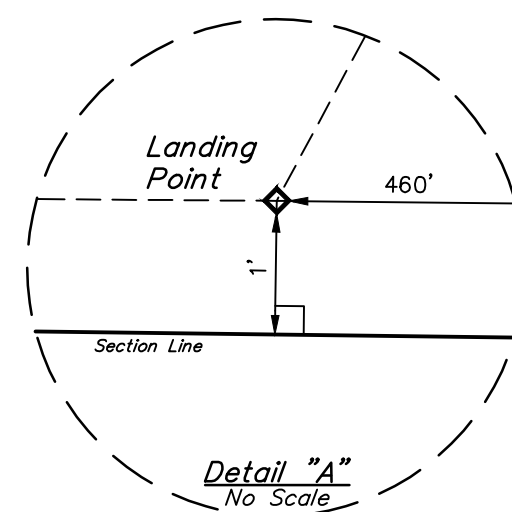
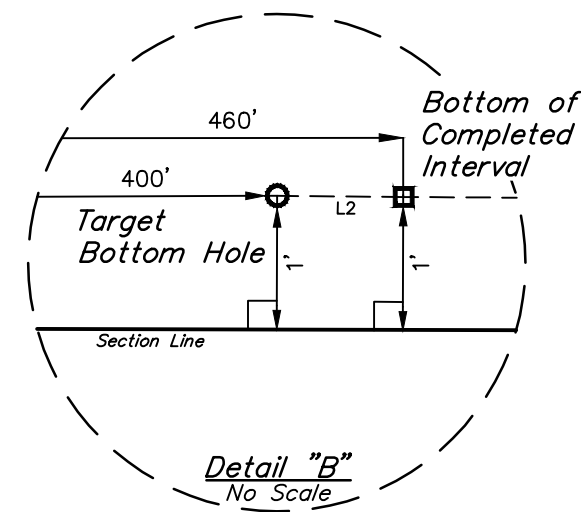
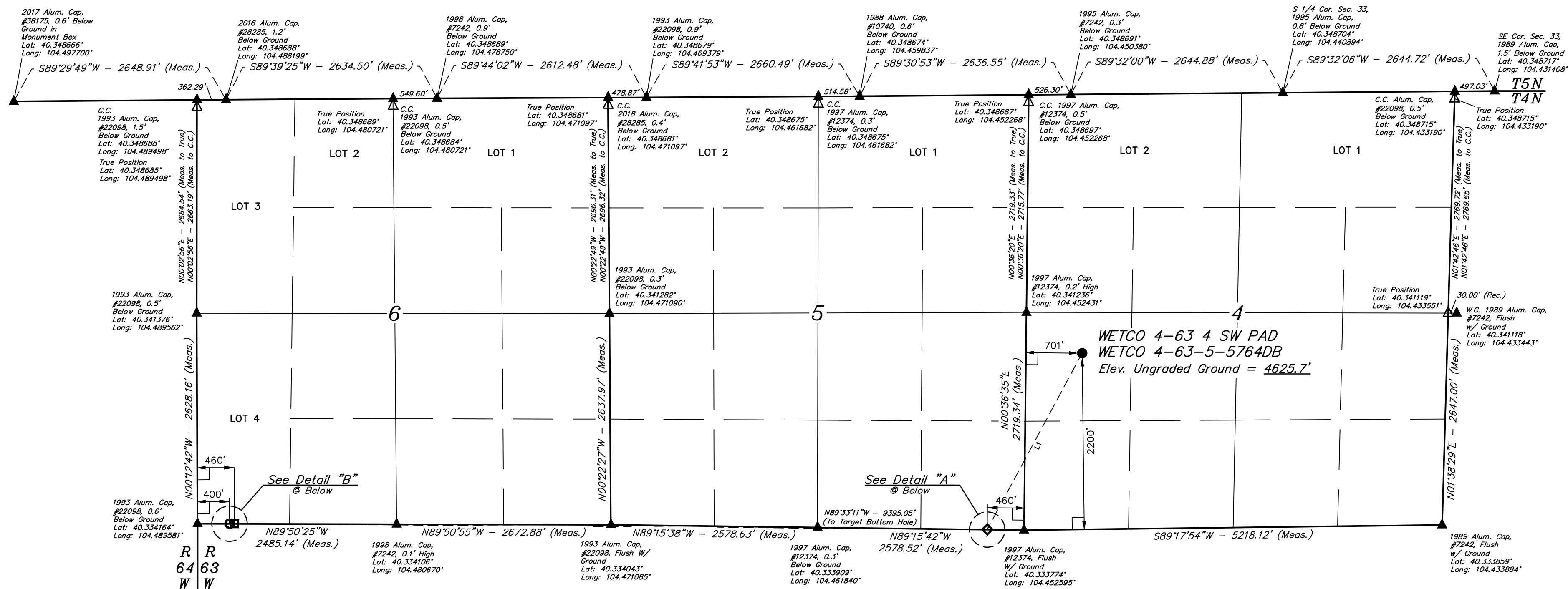
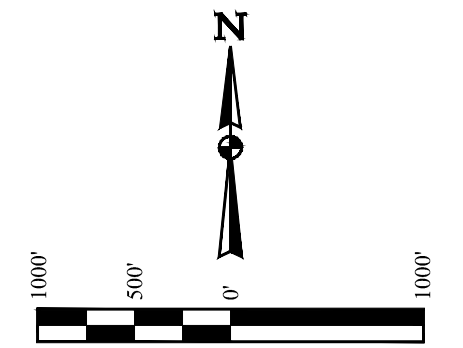



## HIGHPOINT OPERATING CORPORATION

**BASIS OF BEARINGS**  
TRANSVERSE MERCATOR PROJECTION WITH  
A CENTRAL MERIDIAN OF W105°00'00".  
**BASIS OF ELEVATION**  
OPUS SOLUTION GENERATED NAVD 88



CERTIFICATE

THIS IS TO CERTIFY THAT THE ABOVE AND ANY REPAIRS OR REWORKED NOTES OF ACTUAL SURVEYS MADE BY ME OR UNDER MY SUPERVISION, AND THAT THE SAME ARE TRUE AND CORRECT TO THE BEST OF MY KNOWLEDGE AND BELIEF.



REGISTERED LAND SURVEYOR  
REGISTRATION NO. 28285  
STATE OF COLORADO 07-30-18

REV: 01 07-30-18 J.U. (BCI ADDITION)



**UINTEAH**  
ENGINEERING & LAND SURVEYING

**UELS, LLC**  
Corporate Office \* 85 South 200 East  
Vernal, UT 84078 \* (435) 789-1017

<b>SURVEYED BY</b>	<b>RYAN WILLIAMS, C.M.</b>	<b>07-24-18</b>	<b>SCALE</b>
<b>DRAWN BY</b>	<b>C.C.</b>	<b>07-25-18</b>	<b>1" = 1000'</b>
<b>WELL LOCATION PLAT</b>			

**PDOP = 1.2**

LINE TABLE		
LINE	DIRECTION	LENGTH
L1	S28°16'43"W	2500.52'
L2	N90°00'00"W	60.00'

<b>NAD 83 (SURFACE LOCATION)</b> LATITUDE = 40°20'23.37" (40.339824°) LONGITUDE = 104°26'59.81" (104.449974°)	<b>NAD 83 (LANDING POINT)</b> LATITUDE = 40°20'01.68" (40.33801°) LONGITUDE = 104°27'15.28" (104.454244°)	<b>NAD 83 (TARGET BOTTOM HOLE)</b> LATITUDE = 40°20'02.97" (40.334158°) LONGITUDE = 104°29'17.33" (104.48487°)
<b>NAD 27 (SURFACE LOCATION)</b> LATITUDE = 40°20'23.43" (40.339843°) LONGITUDE = 104°26'57.90" (104.449436°)	<b>NAD 27 (LANDING POINT)</b> LATITUDE = 40°20'01.75" (40.33802°) LONGITUDE = 104°27'14.44" (104.453733°)	<b>NAD 27 (TARGET BOTTOM HOLE)</b> LATITUDE = 40°20'03.04" (40.334177°) LONGITUDE = 104°29'15.40" (104.487635°)
<b>STATE PLANE NAD 83 (CO. NORTH)</b> N 13668731.58' E 3292703.31'	<b>STATE PLANE NAD 83 (CO. NORTH)</b> N 13661653.51' E 3291531.42'	<b>STATE PLANE NAD 83 (CO. NORTH)</b> N 1366183.75' E 3282079.20'
<b>STATE PLANE NAD 27 (CO. NORTH)</b> N 368373.60' E 2292853.37'	<b>STATE PLANE NAD 27 (CO. NORTH)</b> N 366165.57' E 2291681.51'	<b>STATE PLANE NAD 27 (CO. NORTH)</b> N 366175.77' E 2282229.27'