



September 10, 2018

Ms. Julie Murphy, Director  
Colorado Oil and Gas Conservation Commission  
The Chancery Building  
1120 Lincoln Street, Suite 801  
Denver, CO 80203

RE: Wetco 4-63-5-4033CB  
Township 4 North, Range 63 West, 6<sup>th</sup> P.M.  
Section 5: S/2N/2, N/2S/2  
Section 6: S/2N/2, N/2S/2  
Weld County, Colorado

Proposed Wellbore Unit (Containing 640 Acres, more or less):

Dear Ms. Julie Murphy:

HighPoint is planning to drill the captioned boundary well in accordance with the provisions of COGCC 318A.e.

HighPoint's wellbore spacing unit consists of Section 5: S/2N/2, N/2S/2 and Section 6: S/2N/2, N/2S/2, creating the above referenced spacing unit in which we will target the Niobrara formation. I certify that all of the owners within the proposed wellbore spacing unit were noticed and no objections were received.

Enclosed is a copy of the following document to assist you in your review and approval of HighPoint's proposed changes for the captioned well.

- Plat illustrating the proposed wellbore spacing unit on existing location plat

Thank you for your attention to the enclosed. HighPoint's respectfully requests that the COGCC review the enclosed information and approve the proposed changes for the captioned well.

If you have any questions, please contact me at 303-312-8145.

HIGHPOINT OPERATING CORPORATION

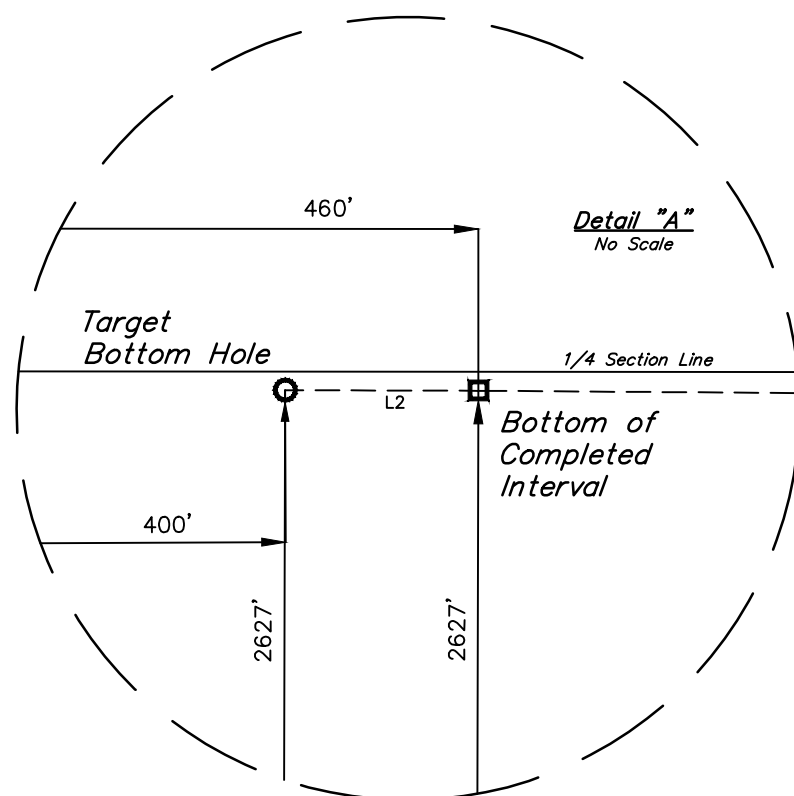
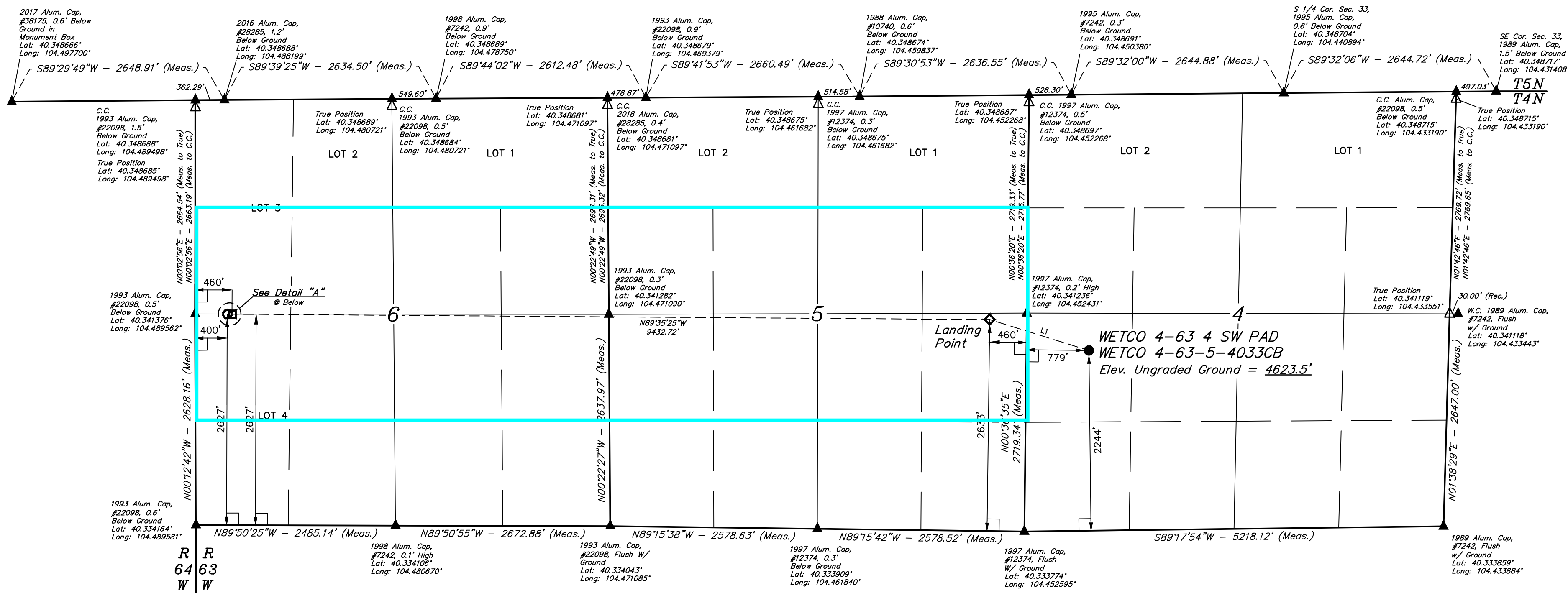
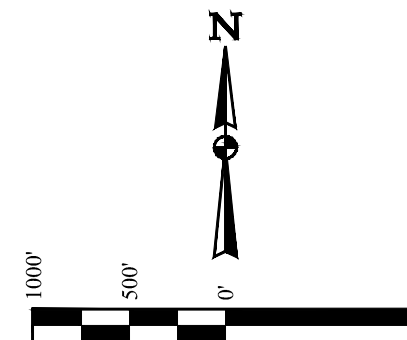
A handwritten signature in blue ink that reads "Delores Montoya".

Delores Montoya  
Sr. Regulatory Analyst

WETCO 4-63 4 SW PAD  
WETCO 4-63-5-4033CB  
NW 1/4 SW 1/4, SECTION 4, T4N, R63W, 6th P.M.  
WELD COUNTY, COLORADO

BASIS OF BEARINGS  
TRANSVERSE MERCATOR PROJECTION WITH  
A CENTRAL MERIDIAN OF W105°00'00".

BASIS OF ELEVATION  
OPUS SOLUTION GENERATED NAVD 88



## LEGEND:

- 90° SYMBOL
- PROPOSED WELLHEAD.
- LANDING POINT.
- TARGET BOTTOM HOLE.
- BOTTOM OF COMPLETED INTERVAL.
- SECTION CORNERS LOCATED. (NAD 83)
- SECTION CORNERS RE-ESTABLISHED. (Not Set on Ground.) (NAD 83)

## LINE TABLE

LINE	DIRECTION	LENGTH
L1	N72°41'25"W	1293.14'
L2	N89°50'25"W	60.00'

NAD 83 (SURFACE LOCATION)	NAD 83 (LANDING POINT)	NAD 83 (TARGET BOTTOM HOLE)
LATITUDE = 40°20'23.81" (40.339946°)	LATITUDE = 40°20'27.68" (40.341023°)	LATITUDE = 40°20'28.91" (40.341364°)
LONGITUDE = 104°26'58.80" (104.449667°)	LONGITUDE = 104°27'14.71" (104.454086°)	LONGITUDE = 104°29'17.26" (104.488127°)
NAD 27 (SURFACE LOCATION)	NAD 27 (LANDING POINT)	NAD 27 (TARGET BOTTOM HOLE)
LATITUDE = 40°20'23.87" (40.339965°)	LATITUDE = 40°20'27.75" (40.341042°)	LATITUDE = 40°20'28.98" (40.341383°)
LONGITUDE = 104°26'56.96" (104.449156°)	LONGITUDE = 104°27'12.87" (104.453575°)	LONGITUDE = 104°29'15.42" (104.487615°)
N: 1368417.01' E: 3292780.97'	N: 1368794.70' E: 3291544.62'	N: 1368808.91' E: 3282054.72'
STATE PLANE NAD 83 (CO. NORTH)	STATE PLANE NAD 83 (CO. NORTH)	STATE PLANE NAD 83 (CO. NORTH)
N: 1368419.03' E: 2292931.03'	N: 368796.71' E: 2291694.68'	N: 368810.89' E: 2282204.76'

PDOP = 1.2

REV: 01 07-30-18 J.U. (BHL CHANGE &amp; BCI ADDITION)



SURVEYED BY RYAN WILLIAMS, C.M. 07-24-18 SCALE  
DRAWN BY C.C. 07-25-18 1" = 1000'

WELL LOCATION PLAT

CERTIFICATE OF RECORDING  
THIS IS TO CERTIFY THAT THE ABOVE DESCRIBED SURVEY HAS BEEN RECORDED IN THE PUBLIC RECORDS OF WELD COUNTY, COLORADO, AND THAT THE SAME ARE TRUE AND CORRECT TO THE BEST OF MY KNOWLEDGE AND BELIEF.

REGISTERED LAND SURVEYOR  
REGISTRATION NO. 28285  
STATE OF COLORADO  
JULY 18, 2018

UELS, LLC  
Corporate Office \* 85 South 200 East  
Vernal, UT 84078 \* (435) 789-1017