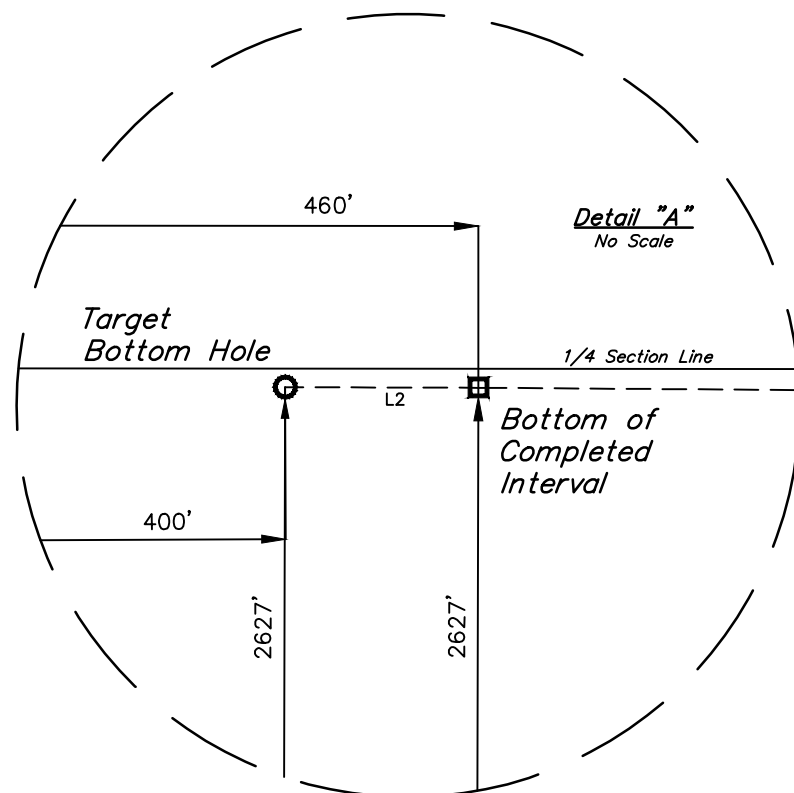
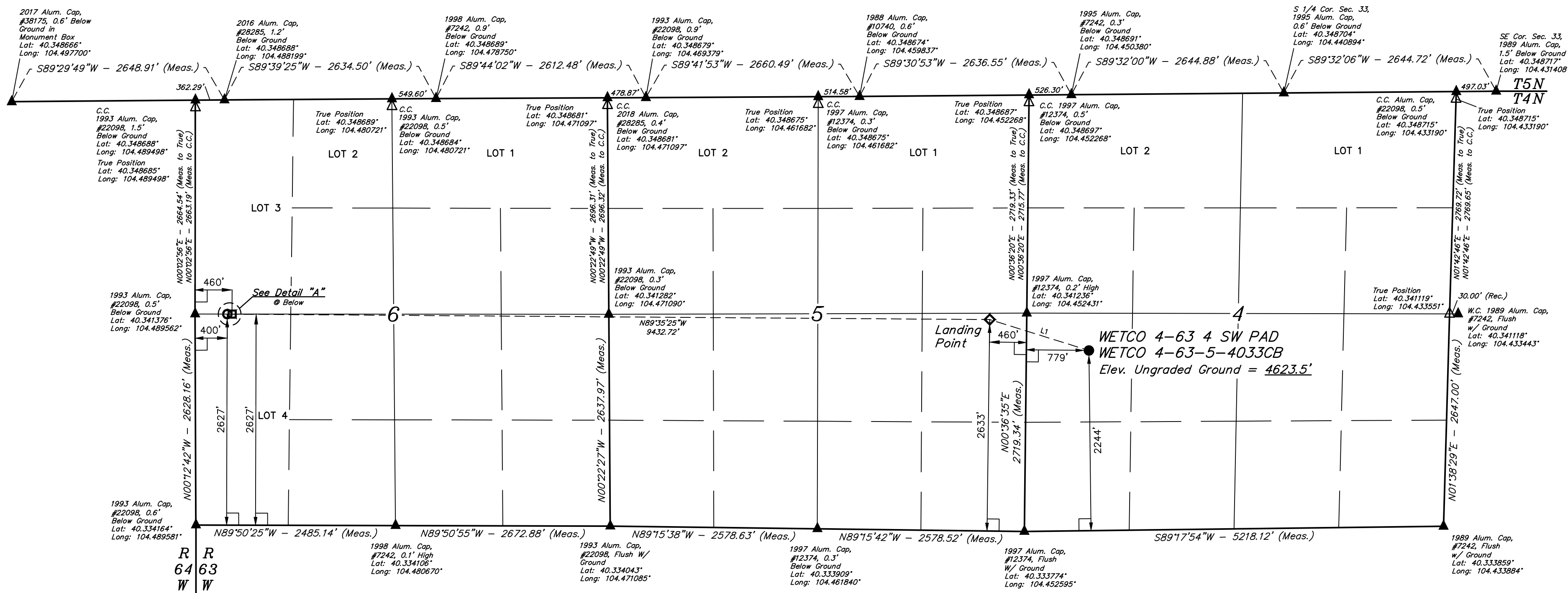
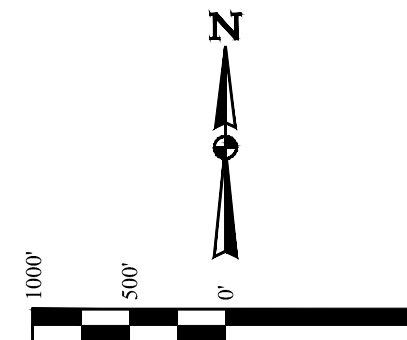


WETCO 4-63 4 SW PAD
WETCO 4-63-5-4033CB
NW 1/4 SW 1/4, SECTION 4, T4N, R63W, 6th P.M.
WELD COUNTY, COLORADO

BASIS OF BEARINGS
TRANSVERSE MERCATOR PROJECTION WITH
A CENTRAL MERIDIAN OF W105°00'00".

BASIS OF ELEVATION
OPUS SOLUTION GENERATED NAVD 88



LEGEND:

- = 90° SYMBOL
- = PROPOSED WELLHEAD.
- ◆ = LANDING POINT.
- = TARGET BOTTOM HOLE.
- = BOTTOM OF COMPLETED INTERVAL.
- ▲ = SECTION CORNERS LOCATED. (NAD 83)
- △ = SECTION CORNERS RE-ESTABLISHED. (Not Set on Ground.) (NAD 83)

LINE TABLE

LINE	DIRECTION	LENGTH
L1	N72°41'25"W	1293.14'
L2	N89°50'25"W	60.00'

NAD 83 (SURFACE LOCATION)	NAD 83 (LANDING POINT)	NAD 83 (TARGET BOTTOM HOLE)
LATITUDE = 40°20'23.81" (40.339946°)	LATITUDE = 40°20'27.68" (40.341023°)	LATITUDE = 40°20'28.91" (40.341364°)
LONGITUDE = 104°26'58.80" (104.449667°)	LONGITUDE = 104°27'14.71" (104.454086°)	LONGITUDE = 104°29'17.26" (104.488127°)
NAD 27 (SURFACE LOCATION)	NAD 27 (LANDING POINT)	NAD 27 (TARGET BOTTOM HOLE)
LATITUDE = 40°20'23.87" (40.339965°)	LATITUDE = 40°20'27.75" (40.341042°)	LATITUDE = 40°20'28.98" (40.341383°)
LONGITUDE = 104°26'56.96" (104.449156°)	LONGITUDE = 104°27'12.87" (104.453575°)	LONGITUDE = 104°29'15.42" (104.487615°)
N: 1368417.01' E: 3292780.97'	N: 1368794.70' E: 3291544.62'	N: 1368808.91' E: 3282054.72'
STATE PLANE NAD 83 (CO. NORTH)	STATE PLANE NAD 83 (CO. NORTH)	STATE PLANE NAD 83 (CO. NORTH)
N: 1368419.03' E: 2292931.03'	N: 368796.71' E: 2291694.68'	N: 368810.89' E: 2282204.76'

PDOP = 1.2

REV: 01 07-30-18 J.U. (BHL CHANGE & BCI ADDITION)



SURVEYED BY RYAN WILLIAMS, C.M. 07-24-18 SCALE
DRAWN BY C.C. 07-25-18 1" = 1000'

WELL LOCATION PLAT

CERTIFICATE OF RECORD
THIS IS TO CERTIFY THAT THE ABOVE SURVEY WAS MADE IN ACCORDANCE WITH THE
NOTES OF ACTUAL SURVEYS MADE BY ME OR UNDER MY SUPERVISION
AND THAT THE SAME ARE TRUE AND CORRECT TO THE BEST OF MY
KNOWLEDGE AND BELIEF.

REGISTERED LAND SURVEYOR
REGISTRATION NO. 28285
STATE OF COLORADO

JUL 30 2018

JUL 30 2018

JUL 30 2018

JUL 30 2018

JUL 30 2018

JUL 30 2018

JUL 30 2018

JUL 30 2018

JUL 30 2018

JUL 30 2018

JUL 30 2018

JUL 30 2018