



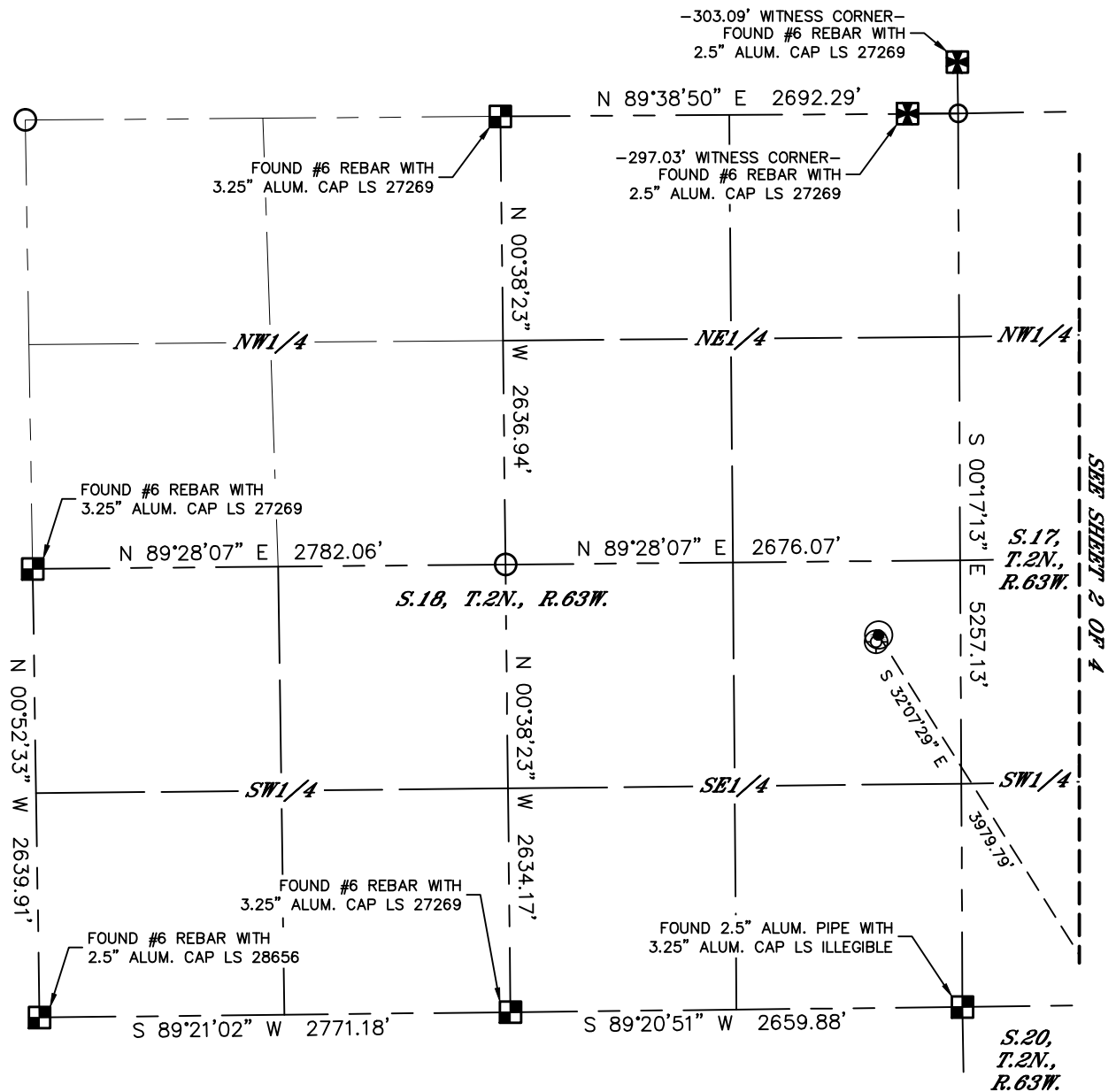
Lat40°, Inc. 6250 W. 10th Street, Unit 2, Greeley, CO 970-515-5294

# MULTI-WELL PLAN

**EWS 4 PAD**

THIS MAP DOES NOT REPRESENT A BOUNDARY SURVEY

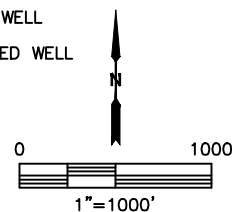
SECTION: 18  
TOWNSHIP: 2N  
RANGE: 63W  
6TH. P.M.  
WELD COUNTY, CO



#	WELL NAME	BHL FOOTAGE				BHL LAT°	BHL LONG°	BHL S-T-R
1	EWS 4B	1686	FNL	1892	FWL	40.12652	-104.46412	20-2-63

## LEGEND

- = ALIQUOT MONUMENT AS DESCRIBED
- ⊠ = WITNESS MONUMENT AS DESCRIBED
- = CALCULATED POSITION
- = SURFACE HOLE LOCATION (SHL)
- ◆ = TOP OF INJECTION ZONE (TIZ)
- <sub>BH</sub> = BOTTOM HOLE LOCATION (BHL)
- ⊙ = EXISTING WELL
- ⊙ = ABANDONED WELL



**SHEET 1 OF 4**

DATE: 8/28/2018  
PROJECT#: 2018146



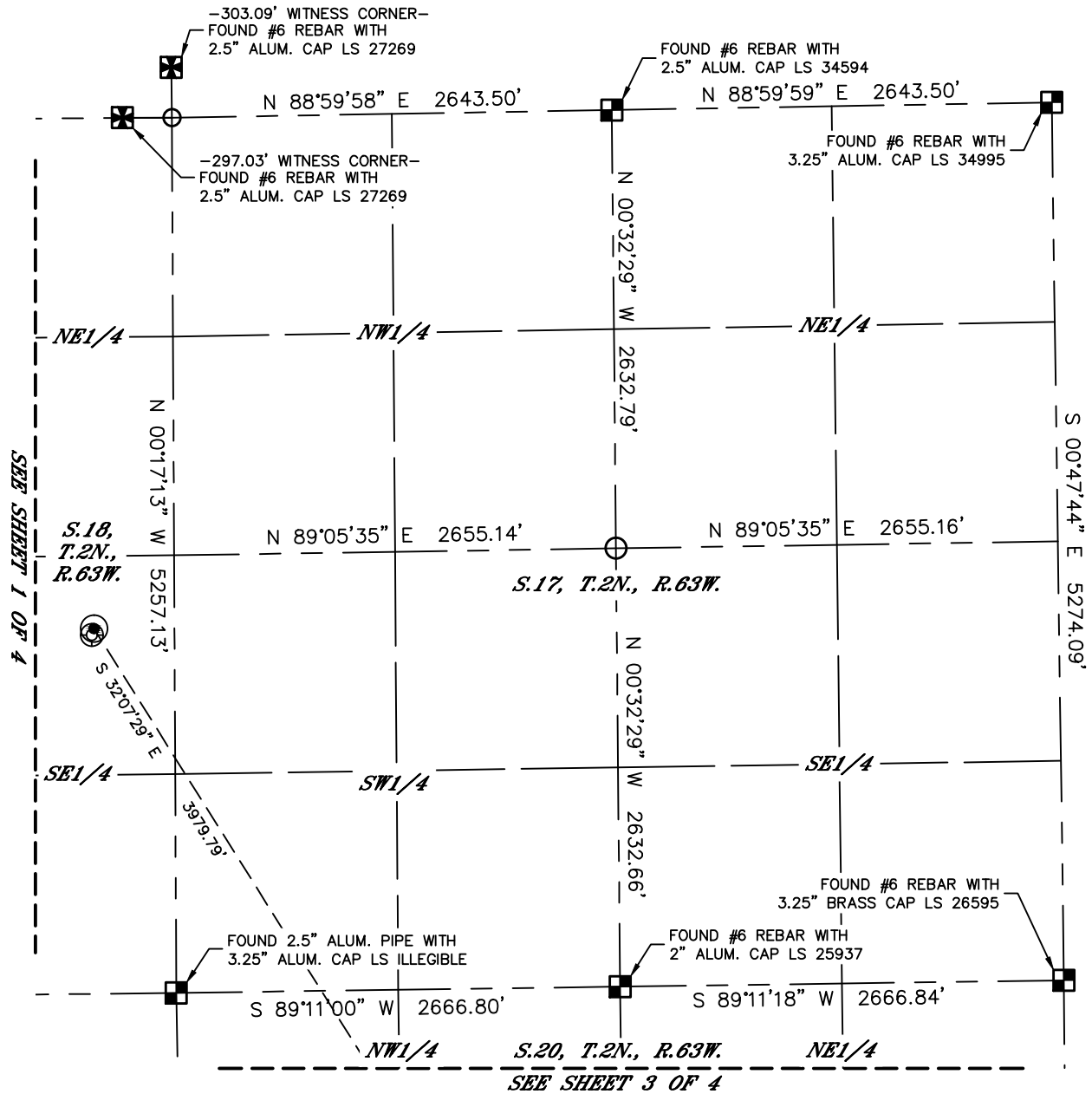
Lat40°, Inc. 6250 W. 10th Street, Unit 2, Greeley, CO 970-515-5294

# MULTI-WELL PLAN

EWS 4 PAD

THIS MAP DOES NOT REPRESENT A BOUNDARY SURVEY

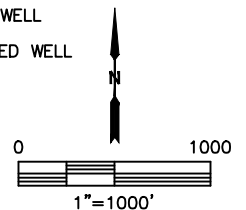
SECTION: 18  
TOWNSHIP: 2N  
RANGE: 63W  
6TH. P.M.  
WELD COUNTY, CO



#	WELL NAME	BHL FOOTAGE				BHL LAT°	BHL LONG°	BHL S-T-R
1	EWS 4B	1686	FNL	1892	FWL	40.12652	-104.46412	20-2-63

## LEGEND

- = ALIQUOT MONUMENT AS DESCRIBED
- ⊠ = WITNESS MONUMENT AS DESCRIBED
- = CALCULATED POSITION
- ⊙ = SURFACE HOLE LOCATION (SHL)
- ◆ = TOP OF INJECTION ZONE (TIZ)
- <sub>BH</sub> = BOTTOM HOLE LOCATION (BHL)
- ⊕ = EXISTING WELL
- ⊖ = ABANDONED WELL



SHEET 2 OF 4

DATE: 8/28/2018  
PROJECT#: 2018146

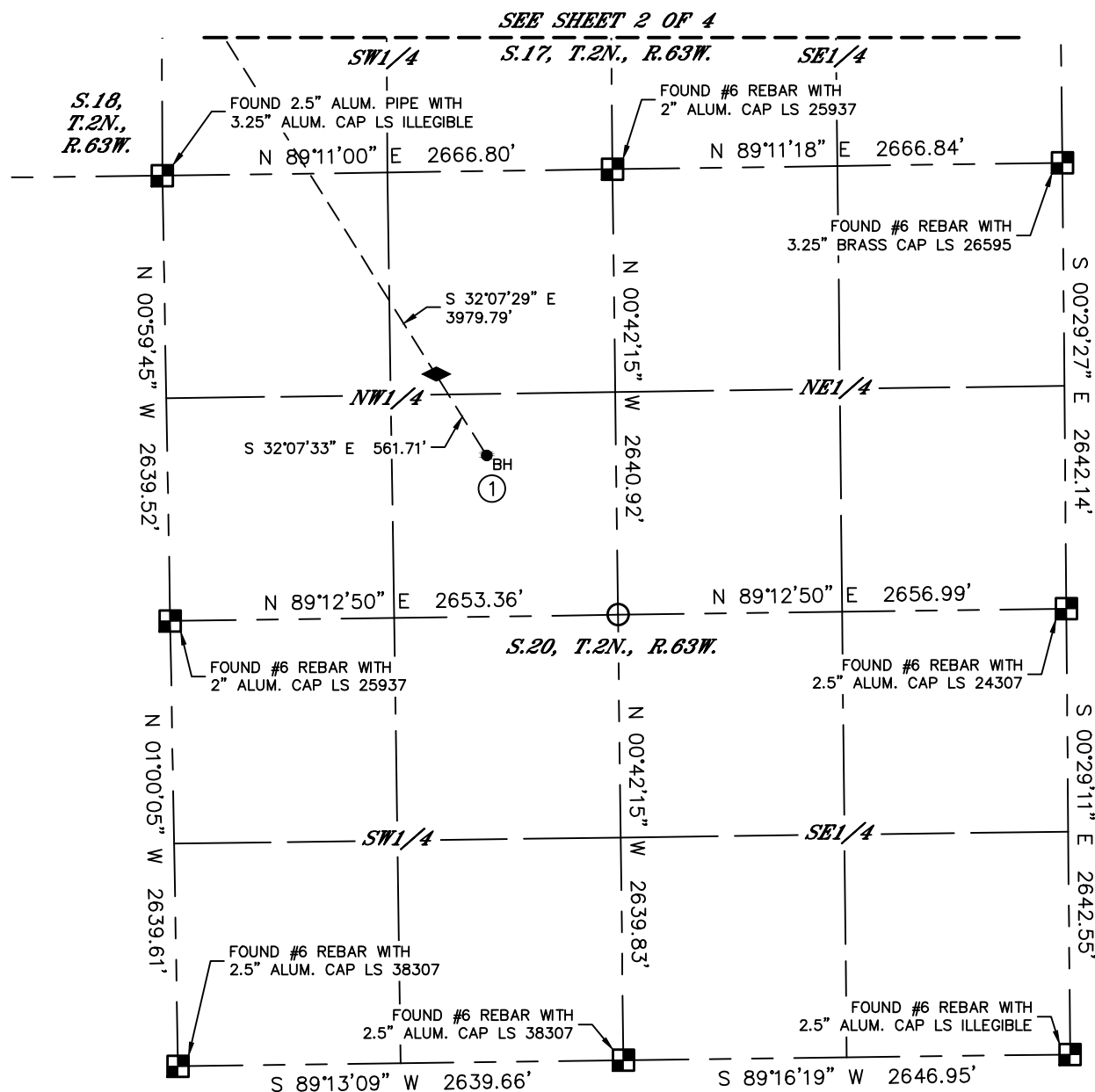
Lat40°, Inc. 6250 W. 10th Street, Unit 2, Greeley, CO 970-515-5294

## MULTI-WELL PLAN

EWS 4 PAD



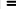





THIS MAP DOES NOT REPRESENT A BOUNDARY SURVEY

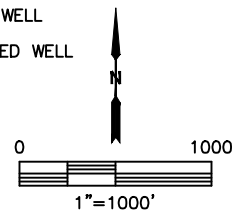
SECTION: 18  
TOWNSHIP: 2N  
RANGE: 63W  
6TH. P.M.  
WELD COUNTY, CO



#	WELL NAME	BHL FOOTAGE				BHL LAT °	BHL LONG °	BHL S-T-R
1	FWS 4B	1686	FNL	1892	FWL	40.12652	-104.46412	20-2-63

### LEGEND

-  = ALIQUOT MONUMENT AS DESCRIBED  
 = WITNESS MONUMENT AS DESCRIBED  
 = CALCULATED POSITION  
 = SURFACE HOLE LOCATION (SHL)  
 = TOP OF INJECTION ZONE (TIZ)  
 = BOTTOM HOLE LOCATION (BHL)  
 = EXISTING WELL  
 = ABANDONED WELL



***SHEET 3 OF 4***

DATE: 8/28/2018  
PROJECT#: 2018146

