

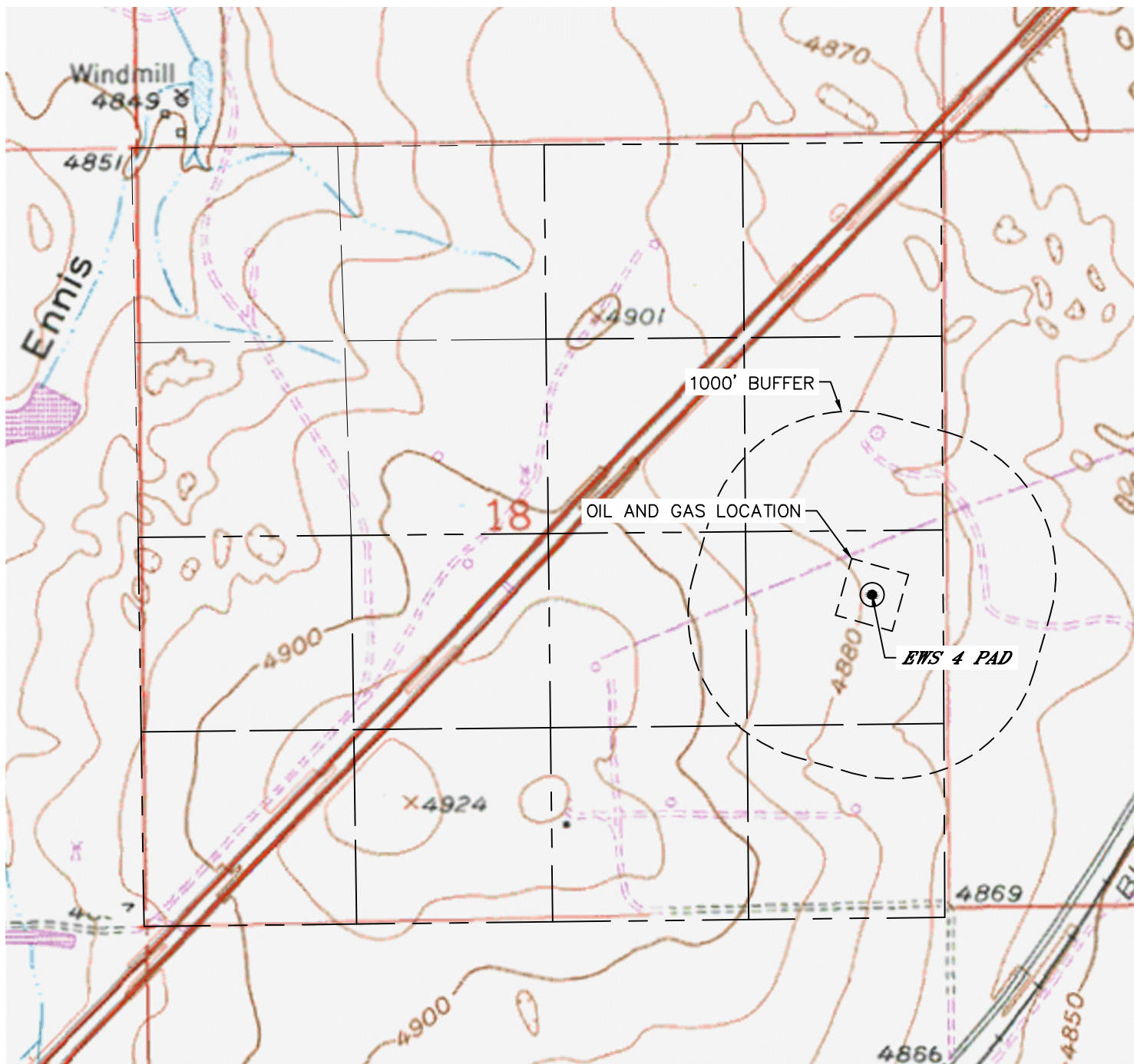


Lat40°, Inc. 6250 W. 10th Street, Unit 2, Greeley, CO 970-515-5294

HYDROLOGY MAP

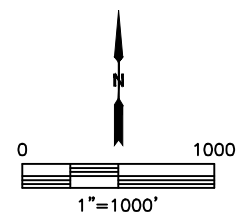
EWS 4 PAD

SECTION: 18
TOWNSHIP: 2N
RANGE: 63W
6TH. P.M.
WELD COUNTY, CO



DISTANCES MEASURED FROM THE EDGE OF THE OIL AND GAS LOCATION.

NO VISIBLE SURFACE WATER WITHIN 1000'



DATE: 8/15/2018
PROJECT#: 2018146