



Lat40°, Inc. 6250 W. 10th Street, Unit 2, Greeley, CO 970-515-5294

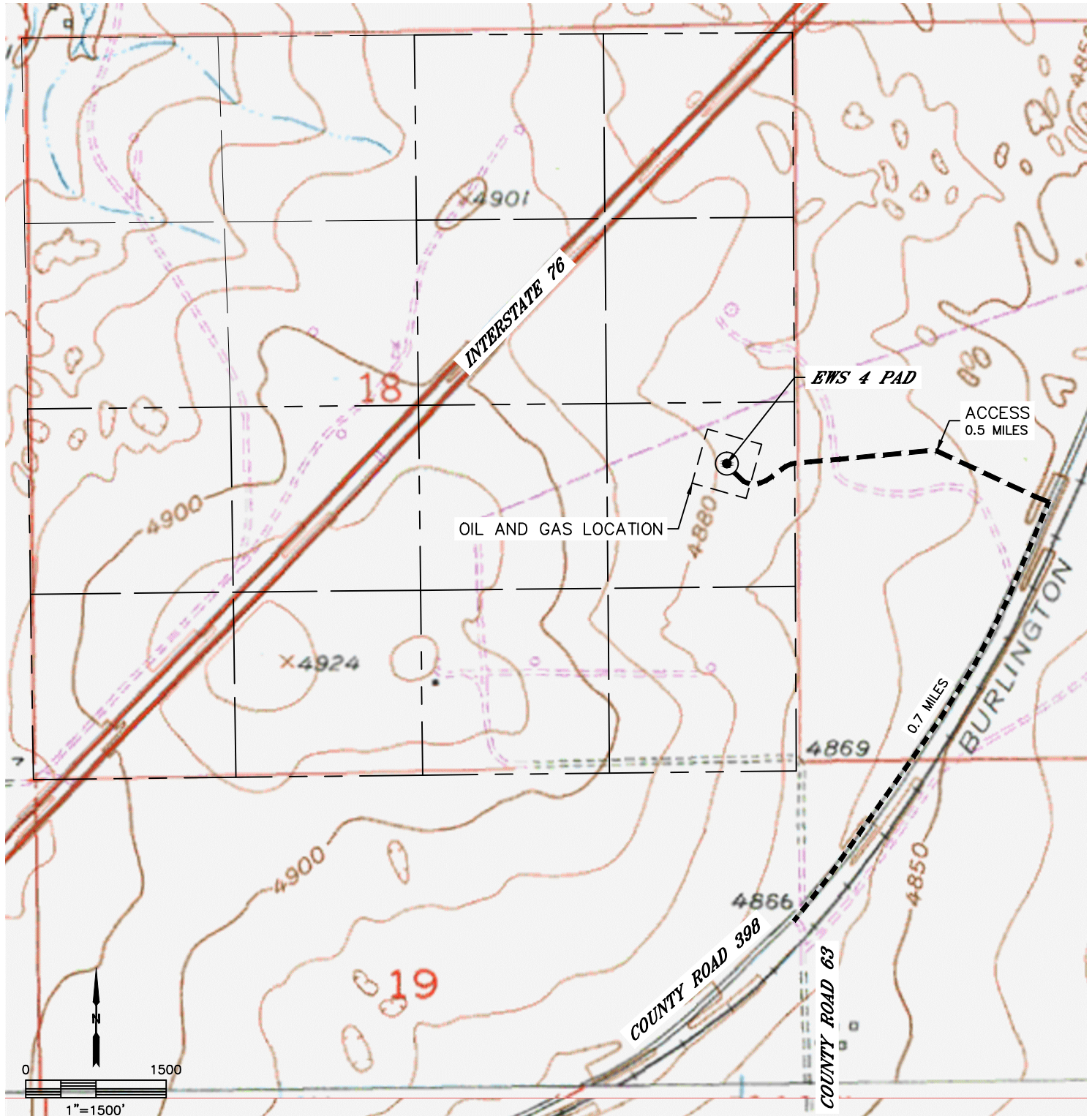
ACCESS ROAD MAP

EWS 4 PAD

SECTION: 18
TOWNSHIP: 2N
RANGE: 63W
6TH. P.M.
WELD COUNTY, CO

DRIVING DIRECTIONS TO EWS 4 PAD

FROM THE INTERSECTION OF COUNTY ROAD 398 AND COUNTY ROAD 63, GO NORTHEAST ON COUNTY ROAD 398 FOR 0.7 MILES TO AN EXISTING ACCESS TO THE NORTHWEST. GO WESTERLY ON THE EXISTING ACCESS ROAD FOR 0.5 MILES TO THE EXISTING EWS 4 PAD.





Lat40°, Inc. 6250 W. 10th Street, Unit 2, Greeley, CO 970-515-5294

ACCESS ROAD MAP

EWS 4 PAD

SECTION: 18
TOWNSHIP: 2N
RANGE: 63W
6TH. P.M.
WELD COUNTY, CO

