

SRC ENERGY

Location: COLORADO Slot: SLOT#14 SEELEY FEDERAL 40N-30B-L (1973'FNL & 1595'FEL, SEC.26)
Field: WELD COUNTY (NAD83, TRUE NORTH) Well: SEELEY FEDERAL 40N-30B-L
Facility: SEC-26-T06N-R66W Wellbore: SEELEY FEDERAL 40N-30B-L PWB

Plot reference wellpath is SEELEY FEDERAL 40N-30B-L (REV-A.0) PWB	Grid System: NAD83 / Lambert Colorado SP, Northern Zone (501), US feet
True vertical depths are referenced to PROPETRO 12 (4') (RKB)	* = Wellpath was transformed from a different geoidic datum
Measured depths are referenced to PROPETRO 12 (4') (RKB)	North Reference: True north
PROPETRO 12 (4') (RKB) to Mean Sea Level: 4701 feet	Scale: True distance
Mean Sea Level to Mud line (At Slot: SLOT#14 SEELEY FEDERAL 40N-30B-L (1973'FNL & 1595'FEL, SEC.26)): 0 feet	Depths are in feet
Coordinates are in feet referenced to Slot	Created by: doddanna on 2018-05-11
	Database: WellArchitectDB

Location Information

Facility Name	Grid East (US R)	Grid North (US R)	Latitude	Longitude
SEC-26-T06N-R66W	5211308.457	1412008.161	40°27'42.779"N	104°44'26.117"W
Slot	Local N (R)	Local E (R)	Grid East (US R)	Grid North (US R)
SLOT#14 SEELEY FEDERAL 40N-30B-L (1973'FNL & 1595'FEL, SEC.26)	-259.79	-2.26	5211308.424	1411749.404
PROPETRO 12 (4') (RKB) to Mud line (At Slot: SLOT#14 SEELEY FEDERAL 40N-30B-L (1973'FNL & 1595'FEL, SEC.26))				4701R
Mean Sea Level to Mud line (At Slot: SLOT#14 SEELEY FEDERAL 40N-30B-L (1973'FNL & 1595'FEL, SEC.26))				0R
PROPETRO 12 (4') (RKB) to Mean Sea Level				4701R

Survey Program

Start MD (ft)	End MD (ft)	Tool	Model	Log Name/Comment	Wellbore
4.00	1750.00	BHI NavTrak	BHI NavTrak (Rotating+Axial Corr)		SEELEY FEDERAL 40N-30B-L PWB
1750.00	17756.21	BHI AutoTrak Curve	BHI AutoTrak Curve (IFR1, Short)		SEELEY FEDERAL 40N-30B-L PWB

Well Profile Data

Design Comment	MD (ft)	Inc (°)	Az (°)	TVD (ft)	Local N (ft)	Local E (ft)	DLS (°/100ft)	VS (ft)
Tie On	4.00	0.000	112.511	4.00	0.00	0.00	0.00	0.00
End of Tangent	200.00	0.000	112.511	200.00	0.00	0.00	0.00	0.00
End of Build	777.63	11.553	112.511	773.72	-22.22	53.61	2.00	54.63
End of Tangent	6576.44	11.553	112.511	6455.06	-466.83	1126.44	0.00	1147.84
End of 3D Arc	7459.65	90.184	90.424	6972.00	-511.34	1753.73	9.00	1776.55
End of Tangent	17756.21	90.184	90.424	6939.00	-587.61	12049.96	0.00	12064.27

Targets

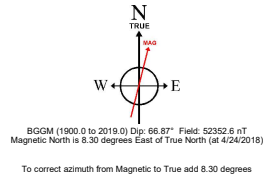
Name	Start MD (ft)	End MD (ft)	Interval (ft)	Start TVD (ft)	End TVD (ft)	Start Local N (ft)	End Local N (ft)	Start Local E (ft)	End Local E (ft)	Wellbore
13.5in Open Hole	4.00	1750.00	1746.00	4.00	1726.45	0.00	0.00	-96.77	233.51	SEELEY FEDERAL 40N-30B-L PWB
9.625in Casing Surface	4.00	1750.00	1746.00	4.00	1726.45	0.00	0.00	-96.77	233.51	SEELEY FEDERAL 40N-30B-L PWB
8.5in Open Hole	1750.00	17756.21	15806.21	1726.45	6939.00	-587.61	12049.96			SEELEY FEDERAL 40N-30B-L PWB

Hole and Casing Sections

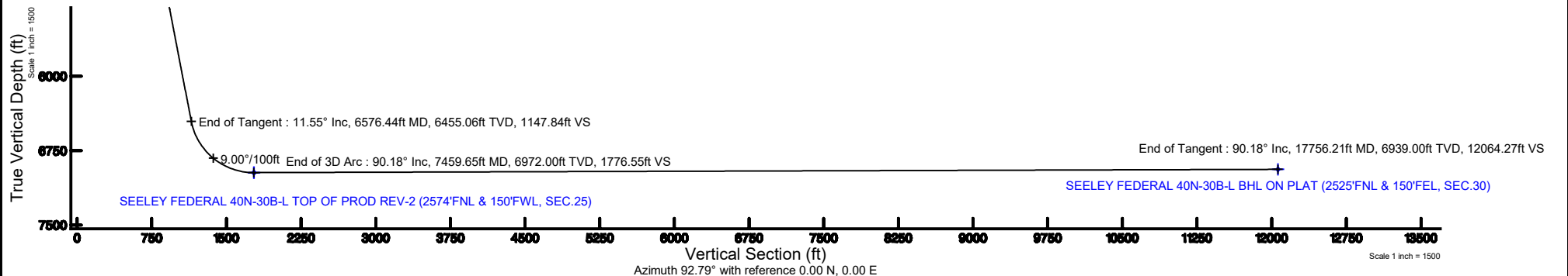
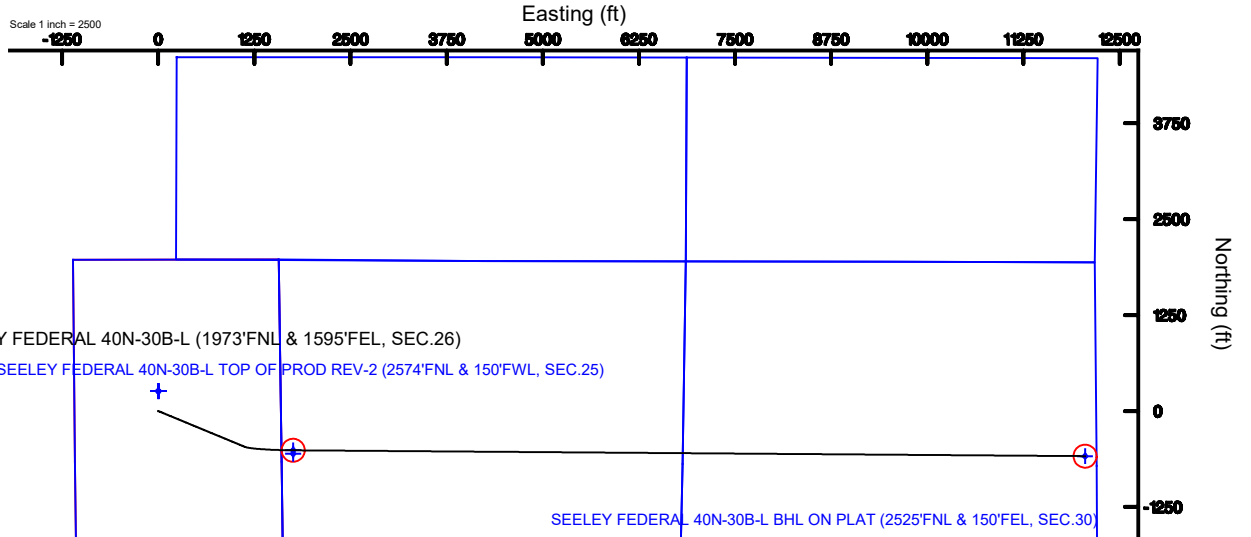
Name	Start MD (ft)	End MD (ft)	Interval (ft)	Start TVD (ft)	End TVD (ft)	Start Local N (ft)	End Local N (ft)	Start Local E (ft)	End Local E (ft)	Wellbore
13.5in Open Hole	4.00	1750.00	1746.00	4.00	1726.45	0.00	0.00	-96.77	233.51	SEELEY FEDERAL 40N-30B-L PWB
9.625in Casing Surface	4.00	1750.00	1746.00	4.00	1726.45	0.00	0.00	-96.77	233.51	SEELEY FEDERAL 40N-30B-L PWB
8.5in Open Hole	1750.00	17756.21	15806.21	1726.45	6939.00	-587.61	12049.96			SEELEY FEDERAL 40N-30B-L PWB



SRC ENERGY



Scale 1 inch = 2500



SEELEY_FEDERAL_40N-30B-L__REV-A.0__PWP.las

~VERSION INFORMATION

VERS. 2.0 : CWLS LOG ASCII STANDARD-VERSION 2.0

WRAP. NO : ASCII DATA SECTION CONTAINS ONE ROW PER WELLPATH STATION

~WELL INFORMATION

#MNEM	.UNITS	DATA	:DESCRIPTION
#----	.-----	----	:-----
STRT	.ft	0.00	:START MD
STOP	.ft	17756.21	:STOP MD
STEP	.ft	0.0	:STEP (non-uniform increment)
NULL	.	-999.99	:NULL
COMP	.	SRC ENERGY	:OPERATOR
WELL	.	SEELEY FEDERAL 40N-30B-L	:WELL
FLD	.	WELD COUNTY (NAD83,TRUE NORTH)	:FIELD
LOC	.	COLORADO	:AREA (aka: Location)
CNTY	.	N/A	:COUNTY
STAT	.	N/A	:STATE
CTRY	.	N/A	:COUNTRY
SRVC	.	Baker Hughes	:CONTRACTOR
DATE	.	04/25/2018	:LOG REV DATE
API	.		:API NUMBER

~OTHER INFORMATION

#Software: WellArchitect(R) Version 5.0

#MNEM	.UNITS	DATA	:DESCRIPTION
#----	.-----	----	:-----
WPTYPE	.	PLANNED WELLPATH	:WELLPATH TYPE
FACILITY	.	SEC.26-T06N-R66W	:FACILITY
SLOT	.	SLOT#14 SEELEY FEDERAL 40N-30B-L (1973'FNL & 1595'FEL, SEC.26):SLOT	
WELLBORE	.	SEELEY FEDERAL 40N-30B-L PWB	:WELLBORE
WELLPATH	.	SEELEY FEDERAL 40N-30B-L (REV-A.0) PWP	:WELLPATH
MDREFPT	.	PROPETRO 12 (4') (RKB)	:MD REFERENCE POINT
TVDREFPT	.	PROPETRO 12 (4') (RKB)	:TVD REFERENCE POINT
LCLREFPT	.	Slot	:LOCAL COORDINATE
REFERENCE PT			
VSAZIMUTH.deg		92.79	:VERTICAL SECTION
AZIMUTH			
VSORIGN	.ft	0.00	:VERTICAL SECTION ORIGIN
NORTH			
VSORIGE	.ft	0.00	:VERTICAL SECTION ORIGIN
EAST			

~CURVE (WELLPATH) INFORMATION

#MNEM	.UNITS	:DESCRIPTION
#----	.-----	:-----
DEPT	.ft	:MEASURED DEPTH

SEELEY_FEDERAL_40N-30B-L__REV-A.0__PWP.las

INC .deg :INCLINATION
 AZI .deg :AZIMUTH
 TVD .ft :TRUE VERTICAL DEPTH
 SECT .ft :CROSS SECTION (CURTAIN/VERTICAL)
 LOCALN .ft :LOCAL NORTH
 LOCALE .ft :LOCAL EAST
 LAT .deg :LATITUDE
 LONG .deg :LONGITUDE
 DLS .deg/100ft :DOGLEG SEVERITY

~ASCII DATA

0.00	0.00	112.51	0.00	0.00	0.00	0.00	40.4611700
-104.7405961	0.00						
4.00	0.00	112.51	4.00	0.00	0.00	0.00	40.4611700
-104.7405961	0.00						
104.00	0.00	112.51	104.00	0.00	0.00	0.00	40.4611700
-104.7405961	0.00						
200.00	0.00	112.51	200.00	0.00	0.00	0.00	40.4611700
-104.7405961	0.00						
204.00	0.08	112.51	204.00	0.00	0.00	0.00	40.4611700
-104.7405961	2.00						
304.00	2.08	112.51	303.98	1.78	-0.72	1.74	40.4611680
-104.7405898	2.00						
404.00	4.08	112.51	403.83	6.83	-2.78	6.71	40.4611624
-104.7405720	2.00						
504.00	6.08	112.51	503.43	15.17	-6.17	14.89	40.4611531
-104.7405426	2.00						
604.00	8.08	112.51	602.66	26.77	-10.89	26.27	40.4611401
-104.7405017	2.00						
704.00	10.08	112.51	701.40	41.63	-16.93	40.85	40.4611235
-104.7404493	2.00						
777.63	11.55	112.51	773.72	54.63	-22.22	53.61	40.4611090
-104.7404034	2.00						
804.00	11.55	112.51	799.56	59.61	-24.24	58.49	40.4611035
-104.7403859	0.00						
904.00	11.55	112.51	897.53	78.46	-31.91	76.99	40.4610824
-104.7403194	0.00						
1004.00	11.55	112.51	995.51	97.31	-39.58	95.50	40.4610614
-104.7402529	0.00						
1104.00	11.55	112.51	1093.48	116.16	-47.24	114.00	40.4610403
-104.7401865	0.00						
1204.00	11.55	112.51	1191.46	135.01	-54.91	132.50	40.4610193
-104.7401200	0.00						
1304.00	11.55	112.51	1289.43	153.87	-62.58	151.00	40.4609982
-104.7400535	0.00						
1404.00	11.55	112.51	1387.40	172.72	-70.25	169.50	40.4609772
-104.7399870	0.00						
1504.00	11.55	112.51	1485.38	191.57	-77.91	188.00	40.4609561

SEELEY_FEDERAL_40N-30B-L__REV-A.0__PWP.las

-104.7399205	0.00						
1604.00	11.55	112.51	1583.35	210.42	-85.58	206.50	40.4609351
-104.7398540	0.00						
1704.00	11.55	112.51	1681.33	229.28	-93.25	225.00	40.4609140
-104.7397875	0.00						
1804.00	11.55	112.51	1779.30	248.13	-100.91	243.50	40.4608930
-104.7397211	0.00						
1904.00	11.55	112.51	1877.28	266.98	-108.58	262.00	40.4608720
-104.7396546	0.00						
2004.00	11.55	112.51	1975.25	285.83	-116.25	280.50	40.4608509
-104.7395881	0.00						
2104.00	11.55	112.51	2073.22	304.69	-123.92	299.00	40.4608299
-104.7395216	0.00						
2204.00	11.55	112.51	2171.20	323.54	-131.58	317.51	40.4608088
-104.7394551	0.00						
2304.00	11.55	112.51	2269.17	342.39	-139.25	336.01	40.4607878
-104.7393886	0.00						
2404.00	11.55	112.51	2367.15	361.24	-146.92	354.51	40.4607667
-104.7393222	0.00						
2504.00	11.55	112.51	2465.12	380.09	-154.59	373.01	40.4607457
-104.7392557	0.00						
2604.00	11.55	112.51	2563.09	398.95	-162.25	391.51	40.4607246
-104.7391892	0.00						
2704.00	11.55	112.51	2661.07	417.80	-169.92	410.01	40.4607036
-104.7391227	0.00						
2804.00	11.55	112.51	2759.04	436.65	-177.59	428.51	40.4606825
-104.7390562	0.00						
2904.00	11.55	112.51	2857.02	455.50	-185.25	447.01	40.4606615
-104.7389897	0.00						
3004.00	11.55	112.51	2954.99	474.36	-192.92	465.51	40.4606404
-104.7389232	0.00						
3104.00	11.55	112.51	3052.97	493.21	-200.59	484.01	40.4606194
-104.7388568	0.00						
3204.00	11.55	112.51	3150.94	512.06	-208.26	502.51	40.4605983
-104.7387903	0.00						
3304.00	11.55	112.51	3248.91	530.91	-215.92	521.01	40.4605773
-104.7387238	0.00						
3404.00	11.55	112.51	3346.89	549.77	-223.59	539.52	40.4605563
-104.7386573	0.00						
3504.00	11.55	112.51	3444.86	568.62	-231.26	558.02	40.4605352
-104.7385908	0.00						
3604.00	11.55	112.51	3542.84	587.47	-238.93	576.52	40.4605142
-104.7385243	0.00						
3704.00	11.55	112.51	3640.81	606.32	-246.59	595.02	40.4604931
-104.7384579	0.00						
3804.00	11.55	112.51	3738.78	625.17	-254.26	613.52	40.4604721
-104.7383914	0.00						
3904.00	11.55	112.51	3836.76	644.03	-261.93	632.02	40.4604510

SEELEY_FEDERAL_40N-30B-L__REV-A.0__PWP.las

-104.7383249	0.00						
4004.00	11.55	112.51	3934.73	662.88	-269.60	650.52	40.4604300
-104.7382584	0.00						
4104.00	11.55	112.51	4032.71	681.73	-277.26	669.02	40.4604089
-104.7381919	0.00						
4204.00	11.55	112.51	4130.68	700.58	-284.93	687.52	40.4603879
-104.7381254	0.00						
4304.00	11.55	112.51	4228.65	719.44	-292.60	706.02	40.4603668
-104.7380590	0.00						
4404.00	11.55	112.51	4326.63	738.29	-300.26	724.52	40.4603458
-104.7379925	0.00						
4504.00	11.55	112.51	4424.60	757.14	-307.93	743.02	40.4603247
-104.7379260	0.00						
4604.00	11.55	112.51	4522.58	775.99	-315.60	761.52	40.4603037
-104.7378595	0.00						
4704.00	11.55	112.51	4620.55	794.85	-323.27	780.03	40.4602826
-104.7377930	0.00						
4804.00	11.55	112.51	4718.53	813.70	-330.93	798.53	40.4602616
-104.7377265	0.00						
4904.00	11.55	112.51	4816.50	832.55	-338.60	817.03	40.4602405
-104.7376601	0.00						
5004.00	11.55	112.51	4914.47	851.40	-346.27	835.53	40.4602195
-104.7375936	0.00						
5104.00	11.55	112.51	5012.45	870.25	-353.94	854.03	40.4601985
-104.7375271	0.00						
5204.00	11.55	112.51	5110.42	889.11	-361.60	872.53	40.4601774
-104.7374606	0.00						
5304.00	11.55	112.51	5208.40	907.96	-369.27	891.03	40.4601564
-104.7373941	0.00						
5404.00	11.55	112.51	5306.37	926.81	-376.94	909.53	40.4601353
-104.7373276	0.00						
5504.00	11.55	112.51	5404.34	945.66	-384.60	928.03	40.4601143
-104.7372612	0.00						
5604.00	11.55	112.51	5502.32	964.52	-392.27	946.53	40.4600932
-104.7371947	0.00						
5704.00	11.55	112.51	5600.29	983.37	-399.94	965.03	40.4600722
-104.7371282	0.00						
5804.00	11.55	112.51	5698.27	1002.22	-407.61	983.53	40.4600511
-104.7370617	0.00						
5904.00	11.55	112.51	5796.24	1021.07	-415.27	1002.04	40.4600301
-104.7369952	0.00						
6004.00	11.55	112.51	5894.22	1039.93	-422.94	1020.54	40.4600090
-104.7369287	0.00						
6104.00	11.55	112.51	5992.19	1058.78	-430.61	1039.04	40.4599880
-104.7368623	0.00						
6204.00	11.55	112.51	6090.16	1077.63	-438.28	1057.54	40.4599669
-104.7367958	0.00						
6304.00	11.55	112.51	6188.14	1096.48	-445.94	1076.04	40.4599459

SEELEY_FEDERAL_40N-30B-L__REV-A.0__PWP.las

-104.7367293	0.00						
6404.00	11.55	112.51	6286.11	1115.33	-453.61	1094.54	40.4599248
-104.7366628	0.00						
6504.00	11.55	112.51	6384.09	1134.19	-461.28	1113.04	40.4599038
-104.7365963	0.00						
6576.44	11.55	112.51	6455.06	1147.84	-466.83	1126.44	40.4598885
-104.7365482	0.00						
6604.00	13.88	108.55	6481.94	1153.62	-468.94	1132.13	40.4598827
-104.7365277	9.00						
6704.00	22.59	101.08	6576.84	1184.23	-476.46	1162.40	40.4598621
-104.7364189	9.00						
6804.00	31.45	97.65	6665.84	1229.32	-483.64	1207.20	40.4598424
-104.7362580	9.00						
6904.00	40.38	95.62	6746.76	1287.79	-490.30	1265.41	40.4598241
-104.7360488	9.00						
7004.00	49.32	94.22	6817.58	1358.19	-496.28	1335.60	40.4598077
-104.7357965	9.00						
7104.00	58.28	93.16	6876.58	1438.79	-501.43	1416.05	40.4597935
-104.7355074	9.00						
7204.00	67.25	92.29	6922.30	1527.61	-505.62	1504.77	40.4597820
-104.7351886	9.00						
7304.00	76.22	91.52	6953.62	1622.46	-508.75	1599.58	40.4597734
-104.7348479	9.00						
7404.00	85.19	90.81	6969.75	1721.01	-510.74	1698.15	40.4597679
-104.7344937	9.00						
7459.65	90.18	90.42	6972.00	1776.55	-511.34	1753.73	40.4597663
-104.7342940	9.00						
7504.00	90.18	90.42	6971.86	1820.87	-511.67	1798.08	40.4597654
-104.7341346	0.00						
7604.00	90.18	90.42	6971.54	1920.78	-512.41	1898.08	40.4597633
-104.7337753	0.00						
7704.00	90.18	90.42	6971.22	2020.70	-513.15	1998.07	40.4597612
-104.7334159	0.00						
7804.00	90.18	90.42	6970.90	2120.61	-513.89	2098.07	40.4597592
-104.7330566	0.00						
7904.00	90.18	90.42	6970.58	2220.52	-514.63	2198.07	40.4597571
-104.7326972	0.00						
8004.00	90.18	90.42	6970.26	2320.44	-515.37	2298.06	40.4597551
-104.7323379	0.00						
8104.00	90.18	90.42	6969.93	2420.35	-516.11	2398.06	40.4597530
-104.7319785	0.00						
8204.00	90.18	90.42	6969.61	2520.27	-516.85	2498.06	40.4597510
-104.7316192	0.00						
8304.00	90.18	90.42	6969.29	2620.18	-517.60	2598.05	40.4597489
-104.7312599	0.00						
8404.00	90.18	90.42	6968.97	2720.09	-518.34	2698.05	40.4597468
-104.7309005	0.00						
8504.00	90.18	90.42	6968.65	2820.01	-519.08	2798.05	40.4597448

SEELEY_FEDERAL_40N-30B-L__REV-A.0__PWP.las

-104.7305412	0.00						
8604.00	90.18	90.42	6968.33	2919.92	-519.82	2898.04	40.4597427
-104.7301818	0.00						
8704.00	90.18	90.42	6968.01	3019.84	-520.56	2998.04	40.4597406
-104.7298225	0.00						
8804.00	90.18	90.42	6967.69	3119.75	-521.30	3098.04	40.4597386
-104.7294631	0.00						
8904.00	90.18	90.42	6967.37	3219.66	-522.04	3198.03	40.4597365
-104.7291038	0.00						
9004.00	90.18	90.42	6967.05	3319.58	-522.78	3298.03	40.4597344
-104.7287444	0.00						
9104.00	90.18	90.42	6966.73	3419.49	-523.52	3398.03	40.4597324
-104.7283851	0.00						
9204.00	90.18	90.42	6966.41	3519.41	-524.26	3498.02	40.4597303
-104.7280258	0.00						
9304.00	90.18	90.42	6966.09	3619.32	-525.00	3598.02	40.4597282
-104.7276664	0.00						
9404.00	90.18	90.42	6965.77	3719.24	-525.74	3698.02	40.4597261
-104.7273071	0.00						
9504.00	90.18	90.42	6965.45	3819.15	-526.48	3798.01	40.4597241
-104.7269477	0.00						
9604.00	90.18	90.42	6965.13	3919.06	-527.23	3898.01	40.4597220
-104.7265884	0.00						
9704.00	90.18	90.42	6964.81	4018.98	-527.97	3998.01	40.4597199
-104.7262290	0.00						
9804.00	90.18	90.42	6964.49	4118.89	-528.71	4098.00	40.4597178
-104.7258697	0.00						
9904.00	90.18	90.42	6964.17	4218.81	-529.45	4198.00	40.4597158
-104.7255103	0.00						
10004.00	90.18	90.42	6963.85	4318.72	-530.19	4298.00	40.4597137
-104.7251510	0.00						
10104.00	90.18	90.42	6963.52	4418.63	-530.93	4397.99	40.4597116
-104.7247917	0.00						
10204.00	90.18	90.42	6963.20	4518.55	-531.67	4497.99	40.4597095
-104.7244323	0.00						
10304.00	90.18	90.42	6962.88	4618.46	-532.41	4597.99	40.4597074
-104.7240730	0.00						
10404.00	90.18	90.42	6962.56	4718.38	-533.15	4697.98	40.4597053
-104.7237136	0.00						
10504.00	90.18	90.42	6962.24	4818.29	-533.89	4797.98	40.4597033
-104.7233543	0.00						
10604.00	90.18	90.42	6961.92	4918.21	-534.63	4897.98	40.4597012
-104.7229949	0.00						
10704.00	90.18	90.42	6961.60	5018.12	-535.37	4997.98	40.4596991
-104.7226356	0.00						
10804.00	90.18	90.42	6961.28	5118.03	-536.11	5097.97	40.4596970
-104.7222763	0.00						
10904.00	90.18	90.42	6960.96	5217.95	-536.86	5197.97	40.4596949

SEELEY_FEDERAL_40N-30B-L__REV-A.0__PWP.las

-104.7219169	0.00						
11004.00	90.18	90.42	6960.64	5317.86	-537.60	5297.97	40.4596928
-104.7215576	0.00						
11104.00	90.18	90.42	6960.32	5417.78	-538.34	5397.96	40.4596907
-104.7211982	0.00						
11204.00	90.18	90.42	6960.00	5517.69	-539.08	5497.96	40.4596886
-104.7208389	0.00						
11304.00	90.18	90.42	6959.68	5617.60	-539.82	5597.96	40.4596865
-104.7204795	0.00						
11404.00	90.18	90.42	6959.36	5717.52	-540.56	5697.95	40.4596844
-104.7201202	0.00						
11504.00	90.18	90.42	6959.04	5817.43	-541.30	5797.95	40.4596823
-104.7197609	0.00						
11604.00	90.18	90.42	6958.72	5917.35	-542.04	5897.95	40.4596802
-104.7194015	0.00						
11704.00	90.18	90.42	6958.40	6017.26	-542.78	5997.94	40.4596781
-104.7190422	0.00						
11804.00	90.18	90.42	6958.08	6117.17	-543.52	6097.94	40.4596760
-104.7186828	0.00						
11904.00	90.18	90.42	6957.76	6217.09	-544.26	6197.94	40.4596739
-104.7183235	0.00						
12004.00	90.18	90.42	6957.44	6317.00	-545.00	6297.93	40.4596718
-104.7179641	0.00						
12104.00	90.18	90.42	6957.12	6416.92	-545.74	6397.93	40.4596697
-104.7176048	0.00						
12204.00	90.18	90.42	6956.79	6516.83	-546.49	6497.93	40.4596676
-104.7172455	0.00						
12304.00	90.18	90.42	6956.47	6616.75	-547.23	6597.92	40.4596655
-104.7168861	0.00						
12404.00	90.18	90.42	6956.15	6716.66	-547.97	6697.92	40.4596634
-104.7165268	0.00						
12504.00	90.18	90.42	6955.83	6816.57	-548.71	6797.92	40.4596613
-104.7161674	0.00						
12604.00	90.18	90.42	6955.51	6916.49	-549.45	6897.91	40.4596592
-104.7158081	0.00						
12704.00	90.18	90.42	6955.19	7016.40	-550.19	6997.91	40.4596571
-104.7154487	0.00						
12804.00	90.18	90.42	6954.87	7116.32	-550.93	7097.91	40.4596550
-104.7150894	0.00						
12904.00	90.18	90.42	6954.55	7216.23	-551.67	7197.90	40.4596529
-104.7147300	0.00						
13004.00	90.18	90.42	6954.23	7316.14	-552.41	7297.90	40.4596507
-104.7143707	0.00						
13104.00	90.18	90.42	6953.91	7416.06	-553.15	7397.90	40.4596486
-104.7140114	0.00						
13204.00	90.18	90.42	6953.59	7515.97	-553.89	7497.89	40.4596465
-104.7136520	0.00						
13304.00	90.18	90.42	6953.27	7615.89	-554.63	7597.89	40.4596444

SEELEY_FEDERAL_40N-30B-L__REV-A.0__PWP.las

-104.7132927	0.00						
13404.00	90.18	90.42	6952.95	7715.80	-555.37	7697.89	40.4596423
-104.7129333	0.00						
13504.00	90.18	90.42	6952.63	7815.72	-556.12	7797.88	40.4596402
-104.7125740	0.00						
13604.00	90.18	90.42	6952.31	7915.63	-556.86	7897.88	40.4596380
-104.7122146	0.00						
13704.00	90.18	90.42	6951.99	8015.54	-557.60	7997.88	40.4596359
-104.7118553	0.00						
13804.00	90.18	90.42	6951.67	8115.46	-558.34	8097.87	40.4596338
-104.7114960	0.00						
13904.00	90.18	90.42	6951.35	8215.37	-559.08	8197.87	40.4596317
-104.7111366	0.00						
14004.00	90.18	90.42	6951.03	8315.29	-559.82	8297.87	40.4596295
-104.7107773	0.00						
14104.00	90.18	90.42	6950.71	8415.20	-560.56	8397.86	40.4596274
-104.7104179	0.00						
14204.00	90.18	90.42	6950.38	8515.11	-561.30	8497.86	40.4596253
-104.7100586	0.00						
14304.00	90.18	90.42	6950.06	8615.03	-562.04	8597.86	40.4596232
-104.7096993	0.00						
14404.00	90.18	90.42	6949.74	8714.94	-562.78	8697.85	40.4596210
-104.7093399	0.00						
14504.00	90.18	90.42	6949.42	8814.86	-563.52	8797.85	40.4596189
-104.7089806	0.00						
14604.00	90.18	90.42	6949.10	8914.77	-564.26	8897.85	40.4596168
-104.7086212	0.00						
14704.00	90.18	90.42	6948.78	9014.68	-565.00	8997.84	40.4596146
-104.7082619	0.00						
14804.00	90.18	90.42	6948.46	9114.60	-565.75	9097.84	40.4596125
-104.7079025	0.00						
14904.00	90.18	90.42	6948.14	9214.51	-566.49	9197.84	40.4596104
-104.7075432	0.00						
15004.00	90.18	90.42	6947.82	9314.43	-567.23	9297.83	40.4596082
-104.7071839	0.00						
15104.00	90.18	90.42	6947.50	9414.34	-567.97	9397.83	40.4596061
-104.7068245	0.00						
15204.00	90.18	90.42	6947.18	9514.26	-568.71	9497.83	40.4596040
-104.7064652	0.00						
15304.00	90.18	90.42	6946.86	9614.17	-569.45	9597.83	40.4596018
-104.7061058	0.00						
15404.00	90.18	90.42	6946.54	9714.08	-570.19	9697.82	40.4595997
-104.7057465	0.00						
15504.00	90.18	90.42	6946.22	9814.00	-570.93	9797.82	40.4595975
-104.7053871	0.00						
15604.00	90.18	90.42	6945.90	9913.91	-571.67	9897.82	40.4595954
-104.7050278	0.00						
15704.00	90.18	90.42	6945.58	10013.83	-572.41	9997.81	40.4595932

SEELEY_FEDERAL_40N-30B-L__REV-A.0__PWP.las

-104.7046685	0.00						
15804.00	90.18	90.42	6945.26	10113.74	-573.15	10097.81	40.4595911
-104.7043091	0.00						
15904.00	90.18	90.42	6944.94	10213.65	-573.89	10197.81	40.4595890
-104.7039498	0.00						
16004.00	90.18	90.42	6944.62	10313.57	-574.63	10297.80	40.4595868
-104.7035904	0.00						
16104.00	90.18	90.42	6944.30	10413.48	-575.38	10397.80	40.4595847
-104.7032311	0.00						
16204.00	90.18	90.42	6943.97	10513.40	-576.12	10497.80	40.4595825
-104.7028717	0.00						
16304.00	90.18	90.42	6943.65	10613.31	-576.86	10597.79	40.4595804
-104.7025124	0.00						
16404.00	90.18	90.42	6943.33	10713.23	-577.60	10697.79	40.4595782
-104.7021531	0.00						
16504.00	90.18	90.42	6943.01	10813.14	-578.34	10797.79	40.4595761
-104.7017937	0.00						
16604.00	90.18	90.42	6942.69	10913.05	-579.08	10897.78	40.4595739
-104.7014344	0.00						
16704.00	90.18	90.42	6942.37	11012.97	-579.82	10997.78	40.4595717
-104.7010750	0.00						
16804.00	90.18	90.42	6942.05	11112.88	-580.56	11097.78	40.4595696
-104.7007157	0.00						
16904.00	90.18	90.42	6941.73	11212.80	-581.30	11197.77	40.4595674
-104.7003563	0.00						
17004.00	90.18	90.42	6941.41	11312.71	-582.04	11297.77	40.4595653
-104.6999970	0.00						
17104.00	90.18	90.42	6941.09	11412.62	-582.78	11397.77	40.4595631
-104.6996377	0.00						
17204.00	90.18	90.42	6940.77	11512.54	-583.52	11497.76	40.4595610
-104.6992783	0.00						
17304.00	90.18	90.42	6940.45	11612.45	-584.26	11597.76	40.4595588
-104.6989190	0.00						
17404.00	90.18	90.42	6940.13	11712.37	-585.00	11697.76	40.4595566
-104.6985596	0.00						
17504.00	90.18	90.42	6939.81	11812.28	-585.75	11797.75	40.4595545
-104.6982003	0.00						
17604.00	90.18	90.42	6939.49	11912.19	-586.49	11897.75	40.4595523
-104.6978410	0.00						
17704.00	90.18	90.42	6939.17	12012.11	-587.23	11997.75	40.4595501
-104.6974816	0.00						
17756.21	90.18	90.42	6939.00	12064.27	-587.61	12049.96	40.4595490
-104.6972940	0.00						



Planned Wellpath Report

SEELEY FEDERAL 40N-30B-L (REV-A.0) PWP

Page 1 of 10



REFERENCE WELLPATH IDENTIFICATION			
Operator	SRC ENERGY	Slot	SLOT#14 SEELEY FEDERAL 40N-30B-L (1973'FNL & 1595'FEL, SEC.26)
Area	COLORADO	Well	SEELEY FEDERAL 40N-30B-L
Field	WELD COUNTY (NAD83,TRUE NORTH)	Wellbore	SEELEY FEDERAL 40N-30B-L PWB
Facility	SEC.26-T06N-R66W		

REPORT SETUP INFORMATION			
Projection System	NAD83 / Lambert Colorado SP, Northern Zone (501), US feet	Software System	WellArchitect® 5.0
North Reference	True	User	Doddanna
Scale	0.999964	Report Generated	5/11/2018 at 11:42:05 AM
Convergence at slot	0.49° East	Database/Source file	WellArchitectDB/SEELEY_FEDERAL_40N-30B-L__REV-A.0__PWP.xml

WELLPATH LOCATION						
	Local coordinates		Grid coordinates		Geographic coordinates	
	North[ft]	East[ft]	Easting[US ft]	Northing[US ft]	Latitude	Longitude
Slot Location	-259.76	-2.26	3211308.42	1411749.40	40°27'40.212"N	104°44'26.146"W
Facility Reference Pt			3211308.46	1412009.16	40°27'42.779"N	104°44'26.117"W
Field Reference Pt			3171284.48	1426358.81	40°30'07.643"N	104°53'02.634"W

WELLPATH DATUM			
Calculation method	Minimum curvature	PROPETRO 12 (4') (RKB) to Facility Vertical Datum	4701.00ft
Horizontal Reference Pt	Slot	PROPETRO 12 (4') (RKB) to Mean Sea Level	4701.00ft
Vertical Reference Pt	PROPETRO 12 (4') (RKB)	PROPETRO 12 (4') (RKB) to Mud Line at Slot (SLOT#14 SEELEY FEDERAL 40N-30B-L (1973'FNL & 1595'FEL, SEC.26))	4701.00ft
MD Reference Pt	PROPETRO 12 (4') (RKB)	Section Origin	N 0.00, E 0.00 ft
Field Vertical Reference	Mean Sea Level	Section Azimuth	92.79°



Planned Wellpath Report

SEELEY FEDERAL 40N-30B-L (REV-A.0) PWP

Page 2 of 10



REFERENCE WELLPATH IDENTIFICATION			
Operator	SRC ENERGY	Slot	SLOT#14 SEELEY FEDERAL 40N-30B-L (1973'FNL & 1595'FEL, SEC.26)
Area	COLORADO	Well	SEELEY FEDERAL 40N-30B-L
Field	WELD COUNTY (NAD83,TRUE NORTH)	Wellbore	SEELEY FEDERAL 40N-30B-L PWB
Facility	SEC.26-T06N-R66W		

WELLPATH DATA (184 stations) † = interpolated/extrapolated station								
MD [ft]	Inclination [°]	Azimuth [°]	TVD [ft]	Vert Sect [ft]	North [ft]	East [ft]	DLS [°/100ft]	Comments
0.00†	0.000	112.511	0.00	0.00	0.00	0.00	0.00	
4.00	0.000	112.511	4.00	0.00	0.00	0.00	0.00	Tie On
104.00†	0.000	112.511	104.00	0.00	0.00	0.00	0.00	
200.00	0.000	112.511	200.00	0.00	0.00	0.00	0.00	End of Tangent
204.00†	0.080	112.511	204.00	0.00	0.00	0.00	2.00	
304.00†	2.080	112.511	303.98	1.78	-0.72	1.74	2.00	
404.00†	4.080	112.511	403.83	6.83	-2.78	6.71	2.00	
504.00†	6.080	112.511	503.43	15.17	-6.17	14.89	2.00	
604.00†	8.080	112.511	602.66	26.77	-10.89	26.27	2.00	
704.00†	10.080	112.511	701.40	41.63	-16.93	40.85	2.00	
777.63	11.553	112.511	773.72	54.63	-22.22	53.61	2.00	End of Build
804.00†	11.553	112.511	799.56	59.61	-24.24	58.49	0.00	
904.00†	11.553	112.511	897.53	78.46	-31.91	76.99	0.00	
1004.00†	11.553	112.511	995.51	97.31	-39.58	95.50	0.00	
1104.00†	11.553	112.511	1093.48	116.16	-47.24	114.00	0.00	
1204.00†	11.553	112.511	1191.46	135.01	-54.91	132.50	0.00	
1304.00†	11.553	112.511	1289.43	153.87	-62.58	151.00	0.00	
1404.00†	11.553	112.511	1387.40	172.72	-70.25	169.50	0.00	
1504.00†	11.553	112.511	1485.38	191.57	-77.91	188.00	0.00	
1604.00†	11.553	112.511	1583.35	210.42	-85.58	206.50	0.00	
1704.00†	11.553	112.511	1681.33	229.28	-93.25	225.00	0.00	
1804.00†	11.553	112.511	1779.30	248.13	-100.91	243.50	0.00	
1904.00†	11.553	112.511	1877.28	266.98	-108.58	262.00	0.00	
2004.00†	11.553	112.511	1975.25	285.83	-116.25	280.50	0.00	
2104.00†	11.553	112.511	2073.22	304.69	-123.92	299.00	0.00	
2204.00†	11.553	112.511	2171.20	323.54	-131.58	317.51	0.00	
2304.00†	11.553	112.511	2269.17	342.39	-139.25	336.01	0.00	
2404.00†	11.553	112.511	2367.15	361.24	-146.92	354.51	0.00	
2504.00†	11.553	112.511	2465.12	380.09	-154.59	373.01	0.00	
2604.00†	11.553	112.511	2563.09	398.95	-162.25	391.51	0.00	



Planned Wellpath Report

SEELEY FEDERAL 40N-30B-L (REV-A.0) PWP

Page 3 of 10



REFERENCE WELLPATH IDENTIFICATION			
Operator	SRC ENERGY	Slot	SLOT#14 SEELEY FEDERAL 40N-30B-L (1973'FNL & 1595'FEL, SEC.26)
Area	COLORADO	Well	SEELEY FEDERAL 40N-30B-L
Field	WELD COUNTY (NAD83,TRUE NORTH)	Wellbore	SEELEY FEDERAL 40N-30B-L PWB
Facility	SEC.26-T06N-R66W		

WELLPATH DATA (184 stations) † = interpolated/extrapolated station								
MD [ft]	Inclination [°]	Azimuth [°]	TVD [ft]	Vert Sect [ft]	North [ft]	East [ft]	DLS [°/100ft]	Comments
2704.00†	11.553	112.511	2661.07	417.80	-169.92	410.01	0.00	
2804.00†	11.553	112.511	2759.04	436.65	-177.59	428.51	0.00	
2904.00†	11.553	112.511	2857.02	455.50	-185.25	447.01	0.00	
3004.00†	11.553	112.511	2954.99	474.36	-192.92	465.51	0.00	
3104.00†	11.553	112.511	3052.97	493.21	-200.59	484.01	0.00	
3204.00†	11.553	112.511	3150.94	512.06	-208.26	502.51	0.00	
3304.00†	11.553	112.511	3248.91	530.91	-215.92	521.01	0.00	
3404.00†	11.553	112.511	3346.89	549.77	-223.59	539.52	0.00	
3504.00†	11.553	112.511	3444.86	568.62	-231.26	558.02	0.00	
3604.00†	11.553	112.511	3542.84	587.47	-238.93	576.52	0.00	
3704.00†	11.553	112.511	3640.81	606.32	-246.59	595.02	0.00	
3804.00†	11.553	112.511	3738.78	625.17	-254.26	613.52	0.00	
3904.00†	11.553	112.511	3836.76	644.03	-261.93	632.02	0.00	
4004.00†	11.553	112.511	3934.73	662.88	-269.60	650.52	0.00	
4104.00†	11.553	112.511	4032.71	681.73	-277.26	669.02	0.00	
4204.00†	11.553	112.511	4130.68	700.58	-284.93	687.52	0.00	
4304.00†	11.553	112.511	4228.65	719.44	-292.60	706.02	0.00	
4404.00†	11.553	112.511	4326.63	738.29	-300.26	724.52	0.00	
4504.00†	11.553	112.511	4424.60	757.14	-307.93	743.02	0.00	
4604.00†	11.553	112.511	4522.58	775.99	-315.60	761.52	0.00	
4704.00†	11.553	112.511	4620.55	794.85	-323.27	780.03	0.00	
4804.00†	11.553	112.511	4718.53	813.70	-330.93	798.53	0.00	
4904.00†	11.553	112.511	4816.50	832.55	-338.60	817.03	0.00	
5004.00†	11.553	112.511	4914.47	851.40	-346.27	835.53	0.00	
5104.00†	11.553	112.511	5012.45	870.25	-353.94	854.03	0.00	
5204.00†	11.553	112.511	5110.42	889.11	-361.60	872.53	0.00	
5304.00†	11.553	112.511	5208.40	907.96	-369.27	891.03	0.00	
5404.00†	11.553	112.511	5306.37	926.81	-376.94	909.53	0.00	
5504.00†	11.553	112.511	5404.34	945.66	-384.60	928.03	0.00	
5604.00†	11.553	112.511	5502.32	964.52	-392.27	946.53	0.00	



Planned Wellpath Report

SEELEY FEDERAL 40N-30B-L (REV-A.0) PWP

Page 4 of 10



REFERENCE WELLPATH IDENTIFICATION			
Operator	SRC ENERGY	Slot	SLOT#14 SEELEY FEDERAL 40N-30B-L (1973'FNL & 1595'FEL, SEC.26)
Area	COLORADO	Well	SEELEY FEDERAL 40N-30B-L
Field	WELD COUNTY (NAD83,TRUE NORTH)	Wellbore	SEELEY FEDERAL 40N-30B-L PWB
Facility	SEC.26-T06N-R66W		

WELLPATH DATA (184 stations) † = interpolated/extrapolated station								
MD [ft]	Inclination [°]	Azimuth [°]	TVD [ft]	Vert Sect [ft]	North [ft]	East [ft]	DLS [°/100ft]	Comments
5704.00†	11.553	112.511	5600.29	983.37	-399.94	965.03	0.00	
5804.00†	11.553	112.511	5698.27	1002.22	-407.61	983.53	0.00	
5904.00†	11.553	112.511	5796.24	1021.07	-415.27	1002.04	0.00	
6004.00†	11.553	112.511	5894.22	1039.93	-422.94	1020.54	0.00	
6104.00†	11.553	112.511	5992.19	1058.78	-430.61	1039.04	0.00	
6204.00†	11.553	112.511	6090.16	1077.63	-438.28	1057.54	0.00	
6304.00†	11.553	112.511	6188.14	1096.48	-445.94	1076.04	0.00	
6404.00†	11.553	112.511	6286.11	1115.33	-453.61	1094.54	0.00	
6504.00†	11.553	112.511	6384.09	1134.19	-461.28	1113.04	0.00	
6576.44	11.553	112.511	6455.06	1147.84	-466.83	1126.44	0.00	End of Tangent
6604.00†	13.877	108.553	6481.94	1153.62	-468.94	1132.13	9.00	
6704.00†	22.585	101.080	6576.84	1184.23	-476.46	1162.40	9.00	
6804.00†	31.453	97.652	6665.84	1229.32	-483.64	1207.20	9.00	
6904.00†	40.375	95.621	6746.76	1287.79	-490.30	1265.41	9.00	
7004.00†	49.321	94.224	6817.58	1358.19	-496.28	1335.60	9.00	
7104.00†	58.280	93.160	6876.58	1438.79	-501.43	1416.05	9.00	
7204.00†	67.247	92.285	6922.30	1527.61	-505.62	1504.77	9.00	
7304.00†	76.217	91.518	6953.62	1622.46	-508.75	1599.58	9.00	
7404.00†	85.190	90.809	6969.75	1721.01	-510.74	1698.15	9.00	
7459.65	90.184	90.424	6972.00†	1776.55	-511.34	1753.73	9.00	End of 3D Arc
7504.00†	90.184	90.424	6971.86	1820.87	-511.67	1798.08	0.00	
7604.00†	90.184	90.424	6971.54	1920.78	-512.41	1898.08	0.00	
7704.00†	90.184	90.424	6971.22	2020.70	-513.15	1998.07	0.00	
7804.00†	90.184	90.424	6970.90	2120.61	-513.89	2098.07	0.00	
7904.00†	90.184	90.424	6970.58	2220.52	-514.63	2198.07	0.00	
8004.00†	90.184	90.424	6970.26	2320.44	-515.37	2298.06	0.00	
8104.00†	90.184	90.424	6969.93	2420.35	-516.11	2398.06	0.00	
8204.00†	90.184	90.424	6969.61	2520.27	-516.85	2498.06	0.00	
8304.00†	90.184	90.424	6969.29	2620.18	-517.60	2598.05	0.00	
8404.00†	90.184	90.424	6968.97	2720.09	-518.34	2698.05	0.00	



Planned Wellpath Report

SEELEY FEDERAL 40N-30B-L (REV-A.0) PWP

Page 5 of 10



REFERENCE WELLPATH IDENTIFICATION			
Operator	SRC ENERGY	Slot	SLOT#14 SEELEY FEDERAL 40N-30B-L (1973'FNL & 1595'FEL, SEC.26)
Area	COLORADO	Well	SEELEY FEDERAL 40N-30B-L
Field	WELD COUNTY (NAD83,TRUE NORTH)	Wellbore	SEELEY FEDERAL 40N-30B-L PWB
Facility	SEC.26-T06N-R66W		

WELLPATH DATA (184 stations) † = interpolated/extrapolated station								
MD [ft]	Inclination [°]	Azimuth [°]	TVD [ft]	Vert Sect [ft]	North [ft]	East [ft]	DLS [°/100ft]	Comments
8504.00†	90.184	90.424	6968.65	2820.01	-519.08	2798.05	0.00	
8604.00†	90.184	90.424	6968.33	2919.92	-519.82	2898.04	0.00	
8704.00†	90.184	90.424	6968.01	3019.84	-520.56	2998.04	0.00	
8804.00†	90.184	90.424	6967.69	3119.75	-521.30	3098.04	0.00	
8904.00†	90.184	90.424	6967.37	3219.66	-522.04	3198.03	0.00	
9004.00†	90.184	90.424	6967.05	3319.58	-522.78	3298.03	0.00	
9104.00†	90.184	90.424	6966.73	3419.49	-523.52	3398.03	0.00	
9204.00†	90.184	90.424	6966.41	3519.41	-524.26	3498.02	0.00	
9304.00†	90.184	90.424	6966.09	3619.32	-525.00	3598.02	0.00	
9404.00†	90.184	90.424	6965.77	3719.24	-525.74	3698.02	0.00	
9504.00†	90.184	90.424	6965.45	3819.15	-526.48	3798.01	0.00	
9604.00†	90.184	90.424	6965.13	3919.06	-527.23	3898.01	0.00	
9704.00†	90.184	90.424	6964.81	4018.98	-527.97	3998.01	0.00	
9804.00†	90.184	90.424	6964.49	4118.89	-528.71	4098.00	0.00	
9904.00†	90.184	90.424	6964.17	4218.81	-529.45	4198.00	0.00	
10004.00†	90.184	90.424	6963.85	4318.72	-530.19	4298.00	0.00	
10104.00†	90.184	90.424	6963.52	4418.63	-530.93	4397.99	0.00	
10204.00†	90.184	90.424	6963.20	4518.55	-531.67	4497.99	0.00	
10304.00†	90.184	90.424	6962.88	4618.46	-532.41	4597.99	0.00	
10404.00†	90.184	90.424	6962.56	4718.38	-533.15	4697.98	0.00	
10504.00†	90.184	90.424	6962.24	4818.29	-533.89	4797.98	0.00	
10604.00†	90.184	90.424	6961.92	4918.21	-534.63	4897.98	0.00	
10704.00†	90.184	90.424	6961.60	5018.12	-535.37	4997.98	0.00	
10804.00†	90.184	90.424	6961.28	5118.03	-536.11	5097.97	0.00	
10904.00†	90.184	90.424	6960.96	5217.95	-536.86	5197.97	0.00	
11004.00†	90.184	90.424	6960.64	5317.86	-537.60	5297.97	0.00	
11104.00†	90.184	90.424	6960.32	5417.78	-538.34	5397.96	0.00	
11204.00†	90.184	90.424	6960.00	5517.69	-539.08	5497.96	0.00	
11304.00†	90.184	90.424	6959.68	5617.60	-539.82	5597.96	0.00	
11404.00†	90.184	90.424	6959.36	5717.52	-540.56	5697.95	0.00	



Planned Wellpath Report

SEELEY FEDERAL 40N-30B-L (REV-A.0) PWP

Page 6 of 10



REFERENCE WELLPATH IDENTIFICATION			
Operator	SRC ENERGY	Slot	SLOT#14 SEELEY FEDERAL 40N-30B-L (1973'FNL & 1595'FEL, SEC.26)
Area	COLORADO	Well	SEELEY FEDERAL 40N-30B-L
Field	WELD COUNTY (NAD83,TRUE NORTH)	Wellbore	SEELEY FEDERAL 40N-30B-L PWB
Facility	SEC.26-T06N-R66W		

WELLPATH DATA (184 stations) † = interpolated/extrapolated station								
MD [ft]	Inclination [°]	Azimuth [°]	TVD [ft]	Vert Sect [ft]	North [ft]	East [ft]	DLS [°/100ft]	Comments
11504.00†	90.184	90.424	6959.04	5817.43	-541.30	5797.95	0.00	
11604.00†	90.184	90.424	6958.72	5917.35	-542.04	5897.95	0.00	
11704.00†	90.184	90.424	6958.40	6017.26	-542.78	5997.94	0.00	
11804.00†	90.184	90.424	6958.08	6117.17	-543.52	6097.94	0.00	
11904.00†	90.184	90.424	6957.76	6217.09	-544.26	6197.94	0.00	
12004.00†	90.184	90.424	6957.44	6317.00	-545.00	6297.93	0.00	
12104.00†	90.184	90.424	6957.12	6416.92	-545.74	6397.93	0.00	
12204.00†	90.184	90.424	6956.79	6516.83	-546.49	6497.93	0.00	
12304.00†	90.184	90.424	6956.47	6616.75	-547.23	6597.92	0.00	
12404.00†	90.184	90.424	6956.15	6716.66	-547.97	6697.92	0.00	
12504.00†	90.184	90.424	6955.83	6816.57	-548.71	6797.92	0.00	
12604.00†	90.184	90.424	6955.51	6916.49	-549.45	6897.91	0.00	
12704.00†	90.184	90.424	6955.19	7016.40	-550.19	6997.91	0.00	
12804.00†	90.184	90.424	6954.87	7116.32	-550.93	7097.91	0.00	
12904.00†	90.184	90.424	6954.55	7216.23	-551.67	7197.90	0.00	
13004.00†	90.184	90.424	6954.23	7316.14	-552.41	7297.90	0.00	
13104.00†	90.184	90.424	6953.91	7416.06	-553.15	7397.90	0.00	
13204.00†	90.184	90.424	6953.59	7515.97	-553.89	7497.89	0.00	
13304.00†	90.184	90.424	6953.27	7615.89	-554.63	7597.89	0.00	
13404.00†	90.184	90.424	6952.95	7715.80	-555.37	7697.89	0.00	
13504.00†	90.184	90.424	6952.63	7815.72	-556.12	7797.88	0.00	
13604.00†	90.184	90.424	6952.31	7915.63	-556.86	7897.88	0.00	
13704.00†	90.184	90.424	6951.99	8015.54	-557.60	7997.88	0.00	
13804.00†	90.184	90.424	6951.67	8115.46	-558.34	8097.87	0.00	
13904.00†	90.184	90.424	6951.35	8215.37	-559.08	8197.87	0.00	
14004.00†	90.184	90.424	6951.03	8315.29	-559.82	8297.87	0.00	
14104.00†	90.184	90.424	6950.71	8415.20	-560.56	8397.86	0.00	
14204.00†	90.184	90.424	6950.38	8515.11	-561.30	8497.86	0.00	
14304.00†	90.184	90.424	6950.06	8615.03	-562.04	8597.86	0.00	
14404.00†	90.184	90.424	6949.74	8714.94	-562.78	8697.85	0.00	



Planned Wellpath Report

SEELEY FEDERAL 40N-30B-L (REV-A.0) PWP

Page 7 of 10



REFERENCE WELLPATH IDENTIFICATION			
Operator	SRC ENERGY	Slot	SLOT#14 SEELEY FEDERAL 40N-30B-L (1973'FNL & 1595'FEL, SEC.26)
Area	COLORADO	Well	SEELEY FEDERAL 40N-30B-L
Field	WELD COUNTY (NAD83,TRUE NORTH)	Wellbore	SEELEY FEDERAL 40N-30B-L PWB
Facility	SEC.26-T06N-R66W		

WELLPATH DATA (184 stations) † = interpolated/extrapolated station								
MD [ft]	Inclination [°]	Azimuth [°]	TVD [ft]	Vert Sect [ft]	North [ft]	East [ft]	DLS [°/100ft]	Comments
14504.00†	90.184	90.424	6949.42	8814.86	-563.52	8797.85	0.00	
14604.00†	90.184	90.424	6949.10	8914.77	-564.26	8897.85	0.00	
14704.00†	90.184	90.424	6948.78	9014.68	-565.00	8997.84	0.00	
14804.00†	90.184	90.424	6948.46	9114.60	-565.75	9097.84	0.00	
14904.00†	90.184	90.424	6948.14	9214.51	-566.49	9197.84	0.00	
15004.00†	90.184	90.424	6947.82	9314.43	-567.23	9297.83	0.00	
15104.00†	90.184	90.424	6947.50	9414.34	-567.97	9397.83	0.00	
15204.00†	90.184	90.424	6947.18	9514.26	-568.71	9497.83	0.00	
15304.00†	90.184	90.424	6946.86	9614.17	-569.45	9597.83	0.00	
15404.00†	90.184	90.424	6946.54	9714.08	-570.19	9697.82	0.00	
15504.00†	90.184	90.424	6946.22	9814.00	-570.93	9797.82	0.00	
15604.00†	90.184	90.424	6945.90	9913.91	-571.67	9897.82	0.00	
15704.00†	90.184	90.424	6945.58	10013.83	-572.41	9997.81	0.00	
15804.00†	90.184	90.424	6945.26	10113.74	-573.15	10097.81	0.00	
15904.00†	90.184	90.424	6944.94	10213.65	-573.89	10197.81	0.00	
16004.00†	90.184	90.424	6944.62	10313.57	-574.63	10297.80	0.00	
16104.00†	90.184	90.424	6944.30	10413.48	-575.38	10397.80	0.00	
16204.00†	90.184	90.424	6943.97	10513.40	-576.12	10497.80	0.00	
16304.00†	90.184	90.424	6943.65	10613.31	-576.86	10597.79	0.00	
16404.00†	90.184	90.424	6943.33	10713.23	-577.60	10697.79	0.00	
16504.00†	90.184	90.424	6943.01	10813.14	-578.34	10797.79	0.00	
16604.00†	90.184	90.424	6942.69	10913.05	-579.08	10897.78	0.00	
16704.00†	90.184	90.424	6942.37	11012.97	-579.82	10997.78	0.00	
16804.00†	90.184	90.424	6942.05	11112.88	-580.56	11097.78	0.00	
16904.00†	90.184	90.424	6941.73	11212.80	-581.30	11197.77	0.00	
17004.00†	90.184	90.424	6941.41	11312.71	-582.04	11297.77	0.00	
17104.00†	90.184	90.424	6941.09	11412.62	-582.78	11397.77	0.00	
17204.00†	90.184	90.424	6940.77	11512.54	-583.52	11497.76	0.00	
17304.00†	90.184	90.424	6940.45	11612.45	-584.26	11597.76	0.00	
17404.00†	90.184	90.424	6940.13	11712.37	-585.00	11697.76	0.00	



Planned Wellpath Report

SEELEY FEDERAL 40N-30B-L (REV-A.0) PWP

Page 8 of 10



REFERENCE WELLPATH IDENTIFICATION			
Operator	SRC ENERGY	Slot	SLOT#14 SEELEY FEDERAL 40N-30B-L (1973'FNL & 1595'FEL, SEC.26)
Area	COLORADO	Well	SEELEY FEDERAL 40N-30B-L
Field	WELD COUNTY (NAD83,TRUE NORTH)	Wellbore	SEELEY FEDERAL 40N-30B-L PWB
Facility	SEC.26-T06N-R66W		

WELLPATH DATA (184 stations) † = interpolated/extrapolated station								
MD [ft]	Inclination [°]	Azimuth [°]	TVD [ft]	Vert Sect [ft]	North [ft]	East [ft]	DLS [°/100ft]	Comments
17504.00†	90.184	90.424	6939.81	11812.28	-585.75	11797.75	0.00	
17604.00†	90.184	90.424	6939.49	11912.19	-586.49	11897.75	0.00	
17704.00†	90.184	90.424	6939.17	12012.11	-587.23	11997.75	0.00	
17756.21	90.184	90.424	6939.00 ²	12064.27	-587.61	12049.96	0.00	End of Tangent

HOLE & CASING SECTIONS									
- Ref Wellbore: SEELEY FEDERAL 40N-30B-L PWB					Ref Wellpath: SEELEY FEDERAL 40N-30B-L (REV-A.0) PWP				
String/Diameter	Start MD [ft]	End MD [ft]	Interval [ft]	Start TVD [ft]	End TVD [ft]	Start N/S [ft]	Start E/W [ft]	End N/S [ft]	End E/W [ft]
13.5in Open Hole	4.00	1750.00	1746.00	4.00	1726.40	0.00	0.00	-96.77	233.51
9.625in Casing Surface	4.00	1750.00	1746.00	4.00	1726.40	0.00	0.00	-96.77	233.51
8.5in Open Hole	1750.00	17756.21	16006.21	1726.40	6939.00	-96.77	233.51	-587.61	12049.96



Planned Wellpath Report

SEELEY FEDERAL 40N-30B-L (REV-A.0) PWP

Page 9 of 10



REFERENCE WELLPATH IDENTIFICATION			
Operator	SRC ENERGY	Slot	SLOT#14 SEELEY FEDERAL 40N-30B-L (1973'FNL & 1595'FEL, SEC.26)
Area	COLORADO	Well	SEELEY FEDERAL 40N-30B-L
Field	WELD COUNTY (NAD83,TRUE NORTH)	Wellbore	SEELEY FEDERAL 40N-30B-L PWB
Facility	SEC.26-T06N-R66W		

TARGETS									
Name	MD [ft]	TVD [ft]	North [ft]	East [ft]	Grid East [US ft]	Grid North [US ft]	Latitude	Longitude	Shape
EAST HALF OF SEC.02-T05N-R66W		-22.00	259.78	2.24	3211308.44	1412009.18	40°27'42.779"N	104°44'26.117"W	polygon
EAST HALF OF SEC.26-T06N-R66W		-22.00	259.78	2.24	3211308.44	1412009.18	40°27'42.779"N	104°44'26.117"W	polygon
EAST HALF OF SEC.35-T06N-R66W		-22.00	259.78	2.24	3211308.44	1412009.18	40°27'42.779"N	104°44'26.117"W	polygon
SEC.25-T06N-R66W		-22.00	259.78	2.24	3211308.44	1412009.18	40°27'42.779"N	104°44'26.117"W	polygon
SEC.30-T06N-R65W		-22.00	259.78	2.24	3211308.44	1412009.18	40°27'42.779"N	104°44'26.117"W	polygon
SOUTH HALF OF SEC.19-T06N-R65W		-22.00	259.78	2.24	3211308.44	1412009.18	40°27'42.779"N	104°44'26.117"W	polygon
SOUTH HALF OF SEC.24-T06N-R66W		-22.00	259.78	2.24	3211308.44	1412009.18	40°27'42.779"N	104°44'26.117"W	polygon
2) SEELEY FEDERAL 40N-30B-L BHL ON PLAT (2525'FNL & 150'FEL, SEC.30)	17756.21	6939.00	-587.61	12049.96	3223362.51	1411265.02	40°27'34.376"N	104°41'50.258"W	circle
SEELEY FEDERAL 40N-30B-L TOP OF PROD ON PLAT (2528'FNL & 150'FWL, SEC.25)		6972.00	-557.34	1753.73	3213066.79	1411207.12	40°27'34.704"N	104°44'03.458"W	point
1) SEELEY FEDERAL 40N-30B-L TOP OF PROD REV-2 (2574'FNL & 150'FWL, SEC.25)	7459.65	6972.00	-511.34	1753.73	3213066.40	1411253.12	40°27'35.159"N	104°44'03.458"W	circle



Planned Wellpath Report

SEELEY FEDERAL 40N-30B-L (REV-A.0) PWP

Page 10 of 10



REFERENCE WELLPATH IDENTIFICATION			
Operator	SRC ENERGY	Slot	SLOT#14 SEELEY FEDERAL 40N-30B-L (1973'FNL & 1595'FEL, SEC.26)
Area	COLORADO	Well	SEELEY FEDERAL 40N-30B-L
Field	WELD COUNTY (NAD83,TRUE NORTH)	Wellbore	SEELEY FEDERAL 40N-30B-L PWB
Facility	SEC.26-T06N-R66W		

SURVEY PROGRAM -				
Ref Wellbore: SEELEY FEDERAL 40N-30B-L PWB Ref Wellpath: SEELEY FEDERAL 40N-30B-L (REV-A.0) PWP				
Start MD [ft]	End MD [ft]	Positional Uncertainty Model	Log Name/Comment	Wellbore
4.00	1750.00	BHI NaviTrak (Rotating+Axial Corr)		SEELEY FEDERAL 40N-30B-L PWB
1750.00	17756.21	BHI AutoTrak Curve (IFR1, Short)		SEELEY FEDERAL 40N-30B-L PWB