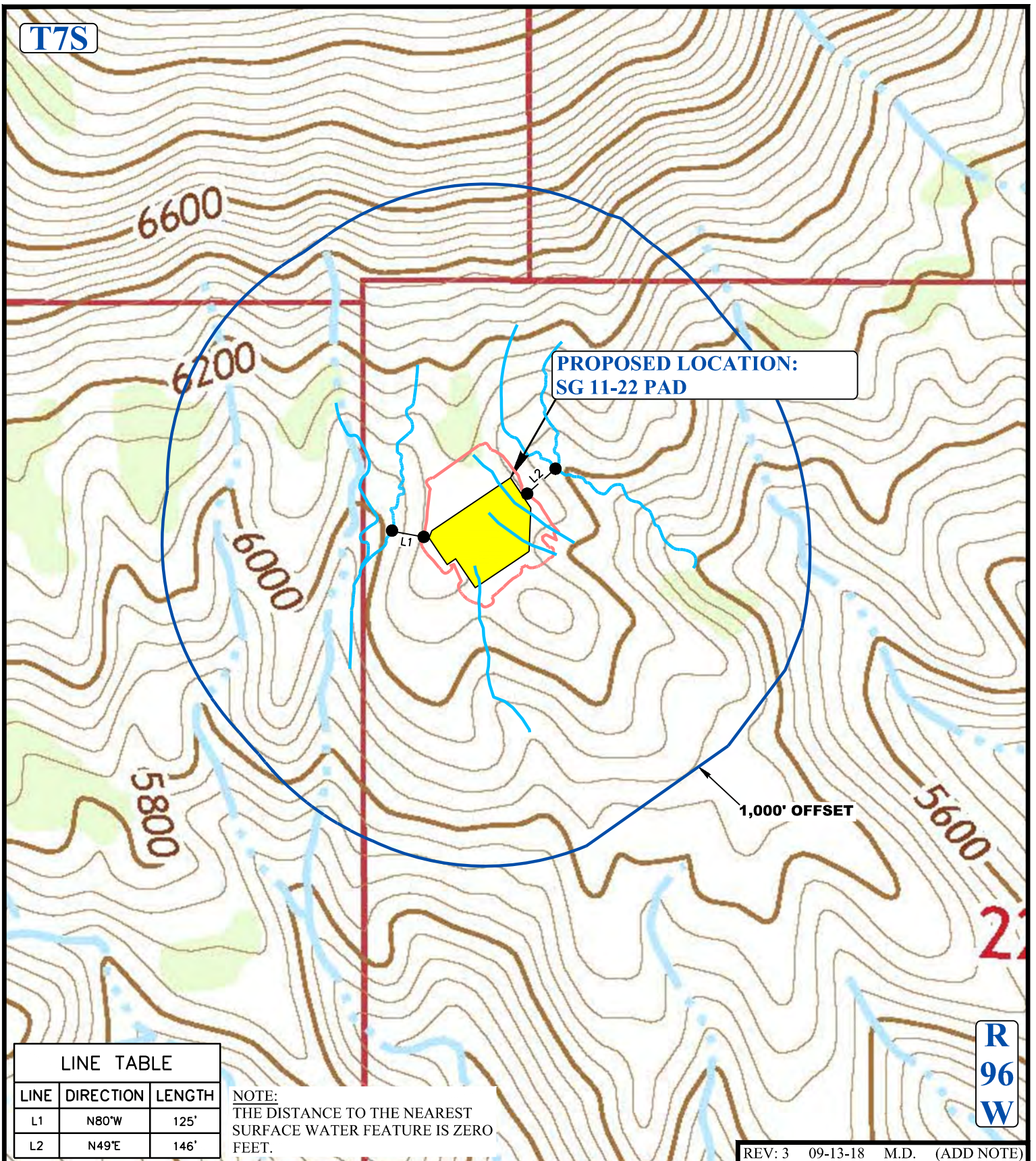


T7S



LINE TABLE

LINE	DIRECTION	LENGTH
L1	N80°W	125'
L2	N49°E	146'

NOTE:
THE DISTANCE TO THE NEAREST
SURFACE WATER FEATURE IS ZERO
FEET.

REV: 3 09-13-18 M.D. (ADD NOTE)

LEGEND:

- EXISTING DRAINAGE
- 1000' OFFSET BOUNDARY
- EDGE OF DISTURBANCE



TEP Rocky Mountain LLC

SG 11-22 PAD
NW 1/4 NW 1/4, SECTION 22, T7S, R96W, 6th P.M.
GARFIELD COUNTY, COLORADO



UELS, LLC
Corporate Office * 85 South 200 East
Vernal, UT 84078 * (435) 789-1017

SURVEYED BY	BART HUNTING, C.R.	02-16-18	MAP SCALE
DRAWN BY	L.K.	08-30-18	1" = 500'
HYDROLOGY MAP			TOPO W