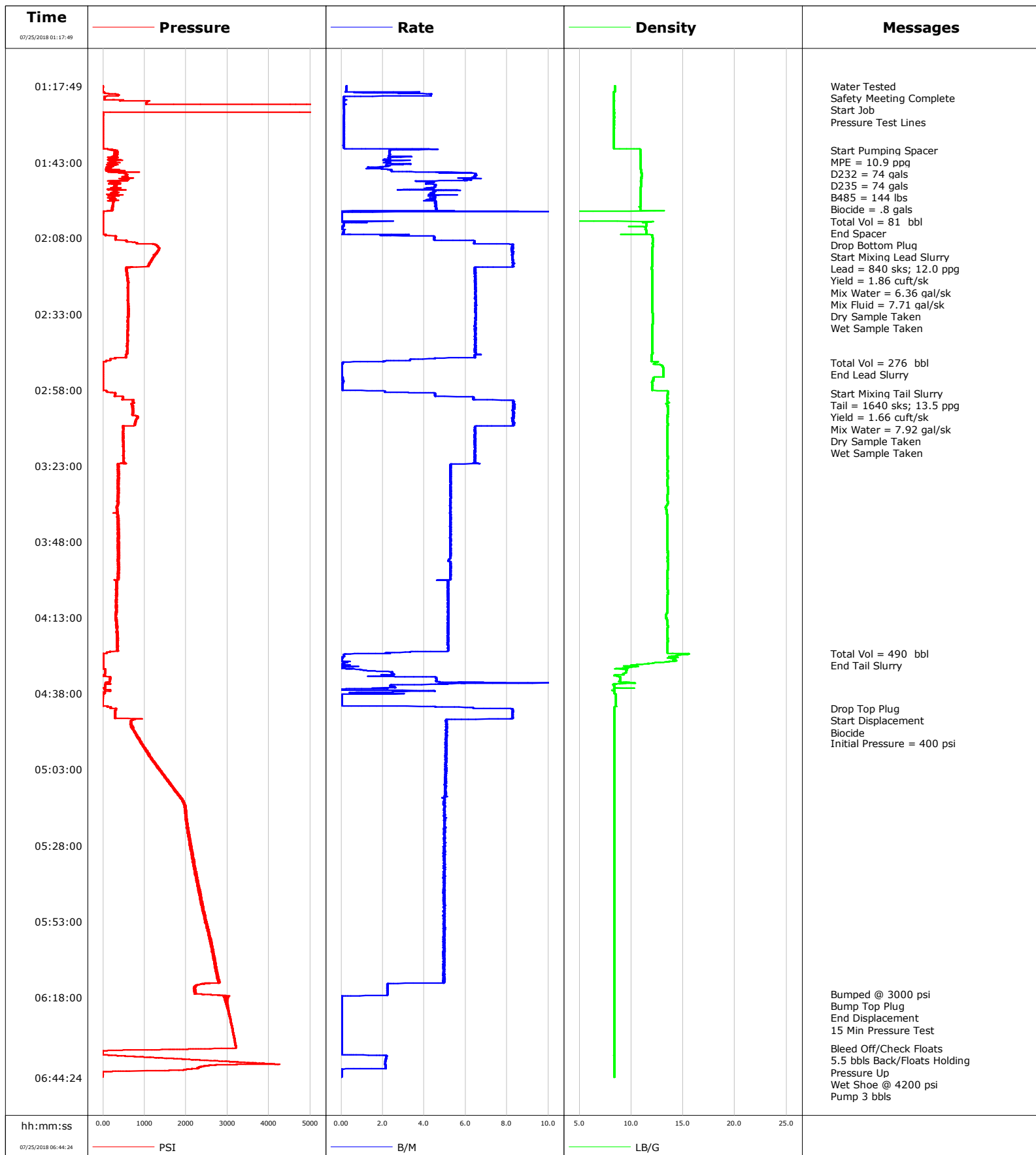


Well English Farms 8-8HZ
Field Wattenberg
Engineer Michael Lopez
Country United States

Client ANADARKO PETROLEUM COMPANY (ED)
SIR No. E0ZP-00405
Job Type 5.5 Production
Job Date 07-24-2018



				Customer ANADARKO PETROLEUM COMPANY (ED)				Job Number E0ZP-00405									
Well English Farms 8-8HZ 0631769079			Location (legal)			Schlumberger Location CWY			Job Start Jul/24/2018								
Field Wattenberg		Formation Name/Type			Deviation deg		Bit Size 8.5 in		Well MD 20364.0 ft		Well TVD ft						
County Weld		State/Province Colorado			BHP psi		BHST 230 degF		BHCT 230 degF		Pore Press. Gradient lb/gal						
Well Master 0631769079		API/UWI 05123465890000															
Rig Name PD 564		Drilled For Oil & Gas		Service Via Land		Casing/ Liner											
						Depth, ft		Size, in		Weight, lb/ft		Grade		Thread			
Offshore Zone		Well Class New		Well Type Exploration		1881.0		9.6		36.0		J55		N/A			
						20353.0		5.5		17.0		P110		8RD			
Drilling Fluid Type OBM		Max. Density 9.10 lb/gal		Plastic Viscosity cP		Tubing/Drill Pipe											
						T/D		Depth, ft		Size, in		Weight, lb/ft		Grade		Thread	
Service Line Cementing		Job Type 5.5 Production															
Max. Allowed Tub. Press psi		Max. Allowed Ann. Press psi		WH Connection 5.5 8 RND		Perforations/Open Hole											
						Top, ft		Bottom, ft		shot/ft		No. of Shots		Total Interval ft			
Service Instructions 9 5/8" 36# Previous Casing: 1,881' 8 1/2" OH to TD OH Excess: 4% Top of Lead Cement: 2,500' Top of Tail Cement: 9,000' TD: 20,364' (7,161')						ft		ft						Diameter in			
						ft		ft									
						ft		ft									
		Treat Down Casing		Displacement 472.0 bbl		Packer Type		Packer Depth ft									
		Tubing Vol. bbl		Casing Vol. 472.0 bbl		Annular Vol. 844.0 bbl		Openhole Vol. 754.0 bbl									
Casing/Tubing Secured <input checked="" type="checkbox"/>		1 Hole Vol. Circulated prior to Cement <input checked="" type="checkbox"/>		Casing Tools				Squeeze Job									
Lift Pressure psi				Shoe Type Float				Squeeze Type									
Pipe Rotated <input type="checkbox"/>		Pipe Reciprocated <input type="checkbox"/>		Shoe Depth 20353.0 ft				Tool Type									
No. Centralizers		Top Plugs 1		Bottom Plugs 1		Stage Tool Type				Tool Depth ft							
Cement Head Type Double				Stage Tool Depth ft				Tail Pipe Size in									
Job Scheduled For Jul/24/2018 16:00		Arrived on Location Jul/24/2018 16:00		Leave Location Jul/25/2018 08:00		Collar Type Float				Tail Pipe Depth ft							
						Collar Depth 20340.0 ft				Sqz. Total Vol. bbl							
Date	Time 24-hr clock	Treating Pressure PSI	Flow Rate B/M	Density LB/G	Volume BBL	Message											
07/25/2018	01:17:49	-10	0.2	8.43	0.0	Started Acquisition											
07/25/2018	01:17:56	-10	0.2	8.43	0.0	Water Tested											
07/25/2018	01:17:57	-10	0.2	8.43	0.0	Safety Meeting Complete											
07/25/2018	01:18:00	-9	0.2	8.43	0.0	Start Job											
07/25/2018	01:18:11	-11	0.2	8.43	0.1	Pressure Test Lines											
07/25/2018	01:38:52	152	3.7	10.88	8.6	Start Pumping Spacer											
07/25/2018	01:38:53	202	3.4	10.88	8.6	MPE = 10.9 ppg											
07/25/2018	01:38:54	287	3.0	10.88	8.7	D232 = 74 gals											
07/25/2018	01:38:55	231	2.7	10.88	8.7	D235 = 74 gals											
07/25/2018	01:46:59	549	6.5	11.00	30.3	Biocide = .8 gals											
07/25/2018	01:59:24	2	1.5	0.59	90.4	Total Vol = 81 bbl											
07/25/2018	01:59:40	0	0.0	0.51	90.4	End Spacer											
07/25/2018	01:59:42	-0	0.0	0.51	90.4	Drop Bottom Plug											
07/25/2018	02:06:39	-4	0.1	11.42	91.1	Start Mixing Lead Slurry											
07/25/2018	02:09:49	821	6.4	12.03	105.8	Lead = 840 sks; 12.0 ppg											
07/25/2018	02:09:50	812	6.4	12.03	105.9	Yield = 1.86 cuft/sk											
07/25/2018	02:09:51	989	6.4	12.03	106.0	Mix Water = 6.36 gal/sk											
07/25/2018	02:09:53	1212	6.6	12.04	106.2	Mix Fluid = 7.71 gal/sk											
07/25/2018	02:10:12	1271	8.3	12.05	108.8	Dry Sample Taken											
07/25/2018	02:10:15	1282	8.2	12.05	109.2	Wet Sample Taken											
07/25/2018	02:48:58	-1	0.1	12.46	367.1	Total Vol = 276 bbl											

Well			Field		Job Start	Customer	Job Number
English Farms 8-8HZ 0631769079			Wattenberg		Jul/24/2018	ANADARKO PETROLEUM COMPANY (ED	E0ZP-00405
Date	Time 24-hr clock	Treating Pressure PSI	Flow Rate B/M	Density LB/G	Volume BBL	Message	
07/25/2018	02:59:06	310	4.5	13.53	369.8	Start Mixing Tail Slurry	
07/25/2018	02:59:09	295	4.5	13.52	370.0	Tail = 1640 sks; 13.5 ppg	
07/25/2018	02:59:10	306	4.5	13.52	370.1	Yield = 1.66 cuft/sk	
07/25/2018	02:59:11	288	4.5	13.52	370.2	Mix Water = 7.92 gal/sk	
07/25/2018	02:59:12	293	4.5	13.52	370.3	Dry Sample Taken	
07/25/2018	02:59:54	283	4.5	13.50	373.4	Wet Sample Taken	
07/25/2018	04:24:51	5	2.3	15.29	857.6	Total Vol = 490 bbl	
07/25/2018	04:25:12	5	0.1	14.93	857.8	End Tail Slurry	
07/25/2018	04:42:56	314	7.7	8.37	887.1	Drop Top Plug	
07/25/2018	04:42:57	313	7.9	8.37	887.2	Start Displacement	
07/25/2018	04:48:06	666	5.1	8.36	924.5	Biocide	
07/25/2018	04:54:22	953	5.0	8.36	956.2	Initial Pressure = 400 psi	
07/25/2018	06:17:00	2368	2.2	8.36	1357.8	Bumped @ 3000 psi	
07/25/2018	06:17:41	2965	0.0	8.36	1359.0	Bump Top Plug	
07/25/2018	06:17:42	2998	0.0	8.36	1359.0	End Displacement	
07/25/2018	06:18:58	2982	0.0	8.36	1359.0	15 Min Pressure Test	
07/25/2018	06:34:50	3129	0.0	8.36	1359.0	Bleed Off/Check Floats	
07/25/2018	06:35:52	-17	0.0	8.36	1359.0	5.5 bbls Back/Floats Holding	
07/25/2018	06:37:00	21	0.4	8.36	1359.0	Pressure Up	
07/25/2018	06:40:41	2413	2.1	8.35	1366.8	Wet Shoe @ 4200 psi	
07/25/2018	06:41:41	2065	0.0	8.36	1368.7	Pump 3 bbls	
07/25/2018	06:42:21	551	0.0	8.36	1368.7	Bleed Off/ 3 bbls Back	

Post Job Summary

Average Pump Rates, bbl/min					Volume of Fluid Injected, bbl			
Slurry 4.6	N2	Mud	Maximum Rate 18.5	Total Slurry 766.0	Mud 0.0	Spacer 80.0	N2	
Treating Pressure Summary, psi					Breakdown Fluid			
Maximum 6020	Final -14	Average 1171	Bump Plug to 3000	Breakdown	Type	Volume bbl	Density lb/gal	
Avg. N2 Percent %		Designed Slurry Volume 759.0 bbl		Displacement 472.0 bbl		Mix Water Temp 65 degF		
						Cement Circulated to Surface? <input type="checkbox"/>		
						Washed Thru Perfs <input type="checkbox"/>		
Customer or Authorized Representative John Truett		Schlumberger Supervisor Michael Lopez		Circulation Lost <input type="checkbox"/>		Job Completed <input checked="" type="checkbox"/>		
				-		-		