

SRC ENERGY

Location: COLORADO Slot: SLOT#10 SEELEY FEDERAL 8N-30B-L (1893°FNL & 1593°FEL, SEC.26)
Field: WELD COUNTY (NAD83, TRUE NORTH) Well: SEELEY FEDERAL 8N-30B-L
Facility: SEC 26-T06N-R66W Wellbore: SEELEY FEDERAL 8N-30B-L PWB

Plot reference wellpath is SEELEY FEDERAL 8N-30B-L (REV-A,Q) PWP	Grid System: NAD83 / Lambert Colorado SP, Northern Zone (501), US feet
True vertical depths are referenced to PROPETRO 12 (4') (RKB)	* = Wellpath was transformed from a different geodetic datum
Measured depths are referenced to PROPETRO 12 (4') (RKB)	North Reference: True north
PROPETRO 12 (4') (RKB) to Mean Sea Level: 4701 feet	Scale: True distance
Mean Sea Level to Mud line (At Slot: SLOT#10 SEELEY FEDERAL 8N-30B-L (1893°FNL & 1593°FEL, SEC.26)): 0 feet	Depths are in feet
Coordinates are in feet referenced to Slot	Created by: doddanna on 2018-05-10
	Database: WellArchitectDB

Location Information

Facility Name				Grid East (US ft)	Grid North (US ft)	Latitude	Longitude
SEC 26-T06N-R66W				3211308.457	1412009.161	40°27'42.779"N	104°44'26.117"W
Slot	Local N (ft)	Local E (ft)	Grid East (US ft)	Grid North (US ft)	Latitude	Longitude	
SLOT#10 SEELEY FEDERAL 8N-30B-L (1893°FNL & 1593°FEL, SEC.26)	-180.01	-1.64	3211308.366	1411929.148	40°27'41.000"N	104°44'26.138"W	
PROPETRO 12 (4') (RKB) to Mud line (At Slot: SLOT#10 SEELEY FEDERAL 8N-30B-L (1893°FNL & 1593°FEL, SEC.26))						4701ft	
Mean Sea Level to Mud line (At Slot: SLOT#10 SEELEY FEDERAL 8N-30B-L (1893°FNL & 1593°FEL, SEC.26))						0ft	
PROPETRO 12 (4') (RKB) to Mean Sea Level						4701ft	

Survey Program

Start MD (ft)	End MD (ft)	Tool	Model	Log Name/Comment	Wellbore
4.00	1750.00	BHI NavTrak	BHI NavTrak (Rotating+Axial Corr)		SEELEY FEDERAL 8N-30B-L PWB
1750.00	17730.19	BHI AutoTrak Curve	BHI AutoTrak Curve (IFR1, Short)		SEELEY FEDERAL 8N-30B-L PWB

Well Profile Data

Design Comment	MD (ft)	Inc (°)	Az (°)	TVD (ft)	Local N (ft)	Local E (ft)	DLS (°/100ft)	VS (ft)
Tie On	4.00	0.000	78.640	4.00	0.00	0.00	0.00	0.00
End of Tangent	300.00	0.000	78.640	300.00	0.00	0.00	0.00	0.00
End of Build (XS)	848.11	10.962	78.640	844.77	10.30	51.25	2.00	51.42
End of Tangent (XS)	6546.71	10.962	78.640	6439.39	223.74	1113.67	0.00	1117.45
End of 3D Arc (XS)	7427.88	90.044	90.162	6957.00	242.01	1739.69	9.00	1743.69
End of Tangent (XS)	17730.19	90.044	90.162	6949.00	212.82	12041.95	0.00	12043.83

Targets

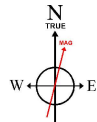
Name	MD (ft)	Inc (°)	Az (°)	TVD (ft)	Local N (ft)	Local E (ft)	DLS (°/100ft)	VS (ft)
1550' BHL ON PLAT (1645°FNL & 150°FEL, SEC.30)	1550	90.04	90.16	1549.99	212.82	12041.95	0.00	12043.83
1649' FNL ON PLAT (1649°FNL & 150°FEL, SEC.25)	1649	90.04	90.16	1648.99	212.82	12041.95	0.00	12043.83
1645' FNL ON PLAT (1645°FNL & 150°FEL, SEC.30)	1645	90.04	90.16	1644.99	212.82	12041.95	0.00	12043.83
1550' BHL ON PLAT (1645°FNL & 150°FEL, SEC.30)	1550	90.04	90.16	1549.99	212.82	12041.95	0.00	12043.83
1649' FNL ON PLAT (1649°FNL & 150°FEL, SEC.25)	1649	90.04	90.16	1648.99	212.82	12041.95	0.00	12043.83
1645' FNL ON PLAT (1645°FNL & 150°FEL, SEC.30)	1645	90.04	90.16	1644.99	212.82	12041.95	0.00	12043.83
1550' BHL ON PLAT (1645°FNL & 150°FEL, SEC.30)	1550	90.04	90.16	1549.99	212.82	12041.95	0.00	12043.83
1649' FNL ON PLAT (1649°FNL & 150°FEL, SEC.25)	1649	90.04	90.16	1648.99	212.82	12041.95	0.00	12043.83
1645' FNL ON PLAT (1645°FNL & 150°FEL, SEC.30)	1645	90.04	90.16	1644.99	212.82	12041.95	0.00	12043.83
1550' BHL ON PLAT (1645°FNL & 150°FEL, SEC.30)	1550	90.04	90.16	1549.99	212.82	12041.95	0.00	12043.83

Hole and Casing Sections

Name	Start MD (ft)	End MD (ft)	Interval (ft)	Start TVD (ft)	End TVD (ft)	Start Local N (ft)	End Local E (ft)	Wellbore
15.5in Open Hole	4.00	1750.00	1746.00	4.00	1750.21	0.00	44.08	SEELEY FEDERAL 8N-30B-L PWB
9.5in Casing Surface	4.00	1750.00	1746.00	4.00	1750.21	0.00	44.08	SEELEY FEDERAL 8N-30B-L PWB
8.5in Open Hole	1750.00	17730.19	15980.19	1750.21	6949.00	44.08	212.82	SEELEY FEDERAL 8N-30B-L PWB

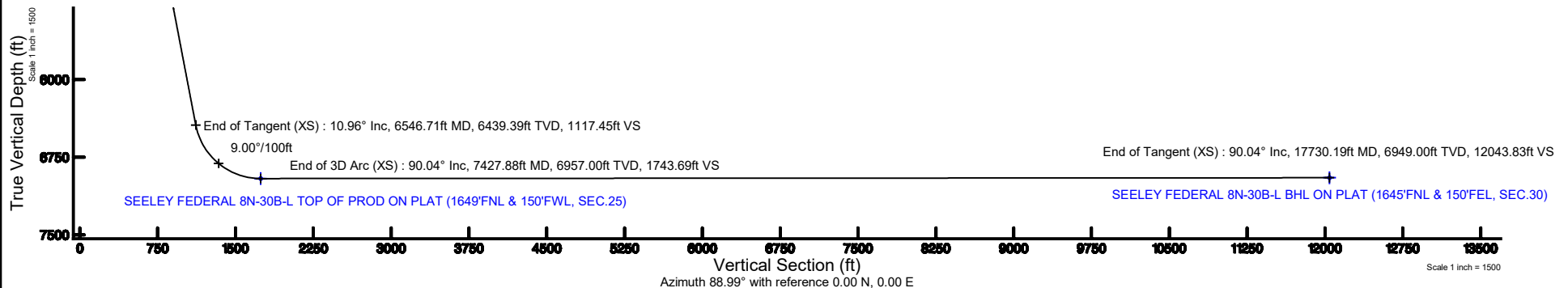
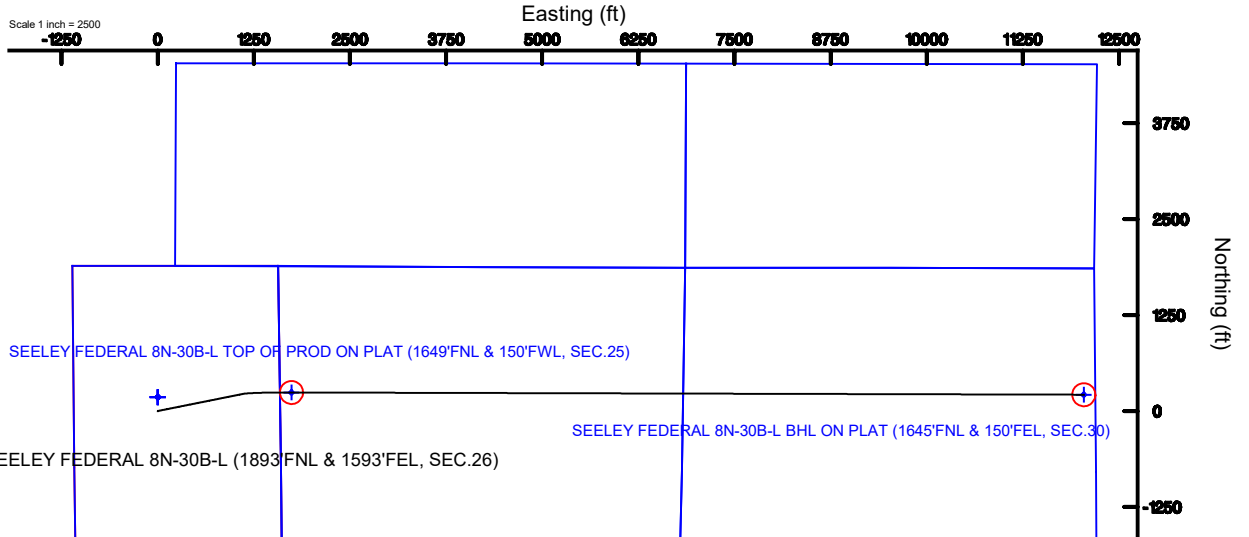


SRC ENERGY



BGGM (1900.0 to 2019.0) Dip: 66.87° Field: 52352.6 nT
Magnetic North is 8.30 degrees East of True North (at 4/24/2018)

To correct azimuth from Magnetic to True add 8.30 degrees



SEELEY_FEDERAL_8N-30B-L__REV-A.0__PWP.las

~VERSION INFORMATION

VERS. 2.0 : CWLS LOG ASCII STANDARD-VERSION 2.0

WRAP. NO : ASCII DATA SECTION CONTAINS ONE ROW PER WELLPATH STATION

~WELL INFORMATION

#MNEM	.UNITS	DATA	:DESCRIPTION
#----	.-----	----	:-----
STRT	.ft	0.00	:START MD
STOP	.ft	17730.19	:STOP MD
STEP	.ft	0.0	:STEP (non-uniform increment)
NULL	.	-999.99	:NULL
COMP	.	SRC ENERGY	:OPERATOR
WELL	.	SEELEY FEDERAL 8N-30B-L	:WELL
FLD	.	WELD COUNTY (NAD83,TRUE NORTH)	:FIELD
LOC	.	COLORADO	:AREA (aka: Location)
CNTY	.	N/A	:COUNTY
STAT	.	N/A	:STATE
CTRY	.	N/A	:COUNTRY
SRVC	.	Baker Hughes	:CONTRACTOR
DATE	.	04/25/2018	:LOG REV DATE
API	.		:API NUMBER

~OTHER INFORMATION

#Software: WellArchitect(R) Version 5.0

#MNEM	.UNITS	DATA	:DESCRIPTION
#----	.-----	----	:-----
WPTYPE	.	PLANNED WELLPATH	:WELLPATH TYPE
FACILITY	.	SEC.26-T06N-R66W	:FACILITY
SLOT	.	SLOT#10 SEELEY FEDERAL 8N-30B-L (1893'FNL & 1593'FEL, SEC.26):SLOT	
WELLBORE	.	SEELEY FEDERAL 8N-30B-L PWB	:WELLBORE
WELLPATH	.	SEELEY FEDERAL 8N-30B-L (REV-A.0) PWP	:WELLPATH
MDREFPT	.	PROPETRO 12 (4') (RKB)	:MD REFERENCE POINT
TVDREFPT	.	PROPETRO 12 (4') (RKB)	:TVD REFERENCE POINT
LCLREFPT	.	Slot	:LOCAL COORDINATE
REFERENCE PT			
VSAZIMUTH.deg		88.99	:VERTICAL SECTION
AZIMUTH			
VSORIGN	.ft	0.00	:VERTICAL SECTION ORIGIN
NORTH			
VSORIGE	.ft	0.00	:VERTICAL SECTION ORIGIN
EAST			

~CURVE (WELLPATH) INFORMATION

#MNEM	.UNITS	:DESCRIPTION
#----	.-----	:-----
DEPT	.ft	:MEASURED DEPTH

SEELEY_FEDERAL_8N-30B-L__REV-A.0__PWP.las

INC .deg :INCLINATION
 AZI .deg :AZIMUTH
 TVD .ft :TRUE VERTICAL DEPTH
 SECT .ft :CROSS SECTION (CURTAIN/VERTICAL)
 LOCALN .ft :LOCAL NORTH
 LOCALE .ft :LOCAL EAST
 LAT .deg :LATITUDE
 LONG .deg :LONGITUDE
 DLS .deg/100ft :DOGLEG SEVERITY

~ASCII DATA

0.00	0.00	78.64	0.00	0.00	0.00	0.00	0.00	40.4613889
-104.7405939	0.00							
4.00	0.00	78.64	4.00	0.00	0.00	0.00	0.00	40.4613889
-104.7405939	0.00							
104.00	0.00	78.64	104.00	0.00	0.00	0.00	0.00	40.4613889
-104.7405939	0.00							
204.00	0.00	78.64	204.00	0.00	0.00	0.00	0.00	40.4613889
-104.7405939	0.00							
300.00	0.00	78.64	300.00	0.00	0.00	0.00	0.00	40.4613889
-104.7405939	0.00							
304.00	0.08	78.64	304.00	0.00	0.00	0.00	0.00	40.4613889
-104.7405939	2.00							
404.00	2.08	78.64	403.98	1.86	0.37	1.85		40.4613899
-104.7405872	2.00							
504.00	4.08	78.64	503.83	7.14	1.43	7.12		40.4613928
-104.7405683	2.00							
604.00	6.08	78.64	603.43	15.85	3.17	15.80		40.4613976
-104.7405371	2.00							
704.00	8.08	78.64	702.66	27.98	5.60	27.88		40.4614043
-104.7404937	2.00							
804.00	10.08	78.64	801.40	43.50	8.71	43.35		40.4614128
-104.7404381	2.00							
848.11	10.96	78.64	844.77	51.42	10.30	51.25		40.4614172
-104.7404097	2.00							
904.00	10.96	78.64	899.64	61.88	12.39	61.67		40.4614229
-104.7403723	0.00							
1004.00	10.96	78.64	997.82	80.59	16.14	80.31		40.4614332
-104.7403053	0.00							
1104.00	10.96	78.64	1095.99	99.29	19.88	98.96		40.4614435
-104.7402383	0.00							
1204.00	10.96	78.64	1194.17	118.00	23.63	117.60		40.4614537
-104.7401713	0.00							
1304.00	10.96	78.64	1292.34	136.71	27.37	136.24		40.4614640
-104.7401043	0.00							
1404.00	10.96	78.64	1390.52	155.41	31.12	154.89		40.4614743
-104.7400373	0.00							
1504.00	10.96	78.64	1488.69	174.12	34.86	173.53		40.4614846

SEELEY_FEDERAL_8N-30B-L__REV-A.0__PWP.las

-104.7399703	0.00						
1604.00	10.96	78.64	1586.87	192.83	38.61	192.17	40.4614949
-104.7399033	0.00						
1704.00	10.96	78.64	1685.04	211.53	42.35	210.82	40.4615051
-104.7398363	0.00						
1804.00	10.96	78.64	1783.22	230.24	46.10	229.46	40.4615154
-104.7397693	0.00						
1904.00	10.96	78.64	1881.40	248.95	49.84	248.11	40.4615257
-104.7397023	0.00						
2004.00	10.96	78.64	1979.57	267.65	53.59	266.75	40.4615360
-104.7396353	0.00						
2104.00	10.96	78.64	2077.75	286.36	57.34	285.39	40.4615463
-104.7395683	0.00						
2204.00	10.96	78.64	2175.92	305.07	61.08	304.04	40.4615565
-104.7395013	0.00						
2304.00	10.96	78.64	2274.10	323.77	64.83	322.68	40.4615668
-104.7394343	0.00						
2404.00	10.96	78.64	2372.27	342.48	68.57	341.32	40.4615771
-104.7393673	0.00						
2504.00	10.96	78.64	2470.45	361.19	72.32	359.97	40.4615874
-104.7393003	0.00						
2604.00	10.96	78.64	2568.62	379.89	76.06	378.61	40.4615977
-104.7392333	0.00						
2704.00	10.96	78.64	2666.80	398.60	79.81	397.25	40.4616079
-104.7391663	0.00						
2804.00	10.96	78.64	2764.97	417.31	83.55	415.90	40.4616182
-104.7390993	0.00						
2904.00	10.96	78.64	2863.15	436.02	87.30	434.54	40.4616285
-104.7390323	0.00						
3004.00	10.96	78.64	2961.32	454.72	91.05	453.18	40.4616388
-104.7389653	0.00						
3104.00	10.96	78.64	3059.50	473.43	94.79	471.83	40.4616491
-104.7388983	0.00						
3204.00	10.96	78.64	3157.67	492.14	98.54	490.47	40.4616593
-104.7388313	0.00						
3304.00	10.96	78.64	3255.85	510.84	102.28	509.11	40.4616696
-104.7387643	0.00						
3404.00	10.96	78.64	3354.02	529.55	106.03	527.76	40.4616799
-104.7386973	0.00						
3504.00	10.96	78.64	3452.20	548.26	109.77	546.40	40.4616902
-104.7386303	0.00						
3604.00	10.96	78.64	3550.38	566.96	113.52	565.05	40.4617005
-104.7385633	0.00						
3704.00	10.96	78.64	3648.55	585.67	117.26	583.69	40.4617107
-104.7384963	0.00						
3804.00	10.96	78.64	3746.73	604.38	121.01	602.33	40.4617210
-104.7384293	0.00						
3904.00	10.96	78.64	3844.90	623.08	124.76	620.98	40.4617313

SEELEY_FEDERAL_8N-30B-L__REV-A.0__PWP.las

-104.7383623	0.00						
4004.00	10.96	78.64	3943.08	641.79	128.50	639.62	40.4617416
-104.7382953	0.00						
4104.00	10.96	78.64	4041.25	660.50	132.25	658.26	40.4617519
-104.7382283	0.00						
4204.00	10.96	78.64	4139.43	679.20	135.99	676.91	40.4617621
-104.7381613	0.00						
4304.00	10.96	78.64	4237.60	697.91	139.74	695.55	40.4617724
-104.7380943	0.00						
4404.00	10.96	78.64	4335.78	716.62	143.48	714.19	40.4617827
-104.7380273	0.00						
4504.00	10.96	78.64	4433.95	735.32	147.23	732.84	40.4617930
-104.7379603	0.00						
4604.00	10.96	78.64	4532.13	754.03	150.97	751.48	40.4618033
-104.7378933	0.00						
4704.00	10.96	78.64	4630.30	772.74	154.72	770.12	40.4618135
-104.7378263	0.00						
4804.00	10.96	78.64	4728.48	791.44	158.47	788.77	40.4618238
-104.7377593	0.00						
4904.00	10.96	78.64	4826.65	810.15	162.21	807.41	40.4618341
-104.7376923	0.00						
5004.00	10.96	78.64	4924.83	828.86	165.96	826.05	40.4618444
-104.7376253	0.00						
5104.00	10.96	78.64	5023.01	847.56	169.70	844.70	40.4618547
-104.7375583	0.00						
5204.00	10.96	78.64	5121.18	866.27	173.45	863.34	40.4618649
-104.7374913	0.00						
5304.00	10.96	78.64	5219.36	884.98	177.19	881.98	40.4618752
-104.7374243	0.00						
5404.00	10.96	78.64	5317.53	903.69	180.94	900.63	40.4618855
-104.7373573	0.00						
5504.00	10.96	78.64	5415.71	922.39	184.68	919.27	40.4618958
-104.7372903	0.00						
5604.00	10.96	78.64	5513.88	941.10	188.43	937.92	40.4619061
-104.7372233	0.00						
5704.00	10.96	78.64	5612.06	959.81	192.18	956.56	40.4619163
-104.7371563	0.00						
5804.00	10.96	78.64	5710.23	978.51	195.92	975.20	40.4619266
-104.7370893	0.00						
5904.00	10.96	78.64	5808.41	997.22	199.67	993.85	40.4619369
-104.7370223	0.00						
6004.00	10.96	78.64	5906.58	1015.93	203.41	1012.49	40.4619472
-104.7369553	0.00						
6104.00	10.96	78.64	6004.76	1034.63	207.16	1031.13	40.4619574
-104.7368883	0.00						
6204.00	10.96	78.64	6102.93	1053.34	210.90	1049.78	40.4619677
-104.7368213	0.00						
6304.00	10.96	78.64	6201.11	1072.05	214.65	1068.42	40.4619780

SEELEY_FEDERAL_8N-30B-L__REV-A.0__PWP.las

-104.7367543	0.00						
6404.00	10.96	78.64	6299.28	1090.75	218.39	1087.06	40.4619883
-104.7366873	0.00						
6504.00	10.96	78.64	6397.46	1109.46	222.14	1105.71	40.4619986
-104.7366203	0.00						
6546.71	10.96	78.64	6439.39	1117.45	223.74	1113.67	40.4620030
-104.7365917	0.00						
6604.00	16.05	82.43	6495.08	1130.68	225.86	1126.87	40.4620088
-104.7365443	9.00						
6704.00	24.99	85.40	6588.64	1165.56	229.38	1161.69	40.4620184
-104.7364191	9.00						
6804.00	33.96	86.87	6675.62	1214.65	232.61	1210.73	40.4620273
-104.7362429	9.00						
6904.00	42.94	87.78	6753.85	1276.75	235.46	1272.78	40.4620351
-104.7360199	9.00						
7004.00	51.93	88.42	6821.43	1350.31	237.87	1346.32	40.4620417
-104.7357556	9.00						
7104.00	60.92	88.93	6876.67	1433.54	239.77	1429.53	40.4620469
-104.7354566	9.00						
7204.00	69.91	89.35	6918.24	1524.38	241.12	1520.36	40.4620506
-104.7351302	9.00						
7304.00	78.90	89.73	6945.09	1620.60	241.89	1616.57	40.4620527
-104.7347844	9.00						
7404.00	87.90	90.08	6956.57	1719.82	242.06	1715.81	40.4620531
-104.7344278	9.00						
7427.88	90.04	90.16	6957.00	1743.69	242.01	1739.69	40.4620530
-104.7343420	9.00						
7504.00	90.04	90.16	6956.94	1819.79	241.79	1815.80	40.4620524
-104.7340685	0.00						
7604.00	90.04	90.16	6956.86	1919.77	241.51	1915.80	40.4620516
-104.7337091	0.00						
7704.00	90.04	90.16	6956.79	2019.75	241.23	2015.80	40.4620508
-104.7333497	0.00						
7804.00	90.04	90.16	6956.71	2119.73	240.94	2115.80	40.4620500
-104.7329904	0.00						
7904.00	90.04	90.16	6956.63	2219.71	240.66	2215.80	40.4620492
-104.7326310	0.00						
8004.00	90.04	90.16	6956.55	2319.69	240.38	2315.80	40.4620484
-104.7322716	0.00						
8104.00	90.04	90.16	6956.47	2419.67	240.09	2415.80	40.4620476
-104.7319123	0.00						
8204.00	90.04	90.16	6956.40	2519.65	239.81	2515.80	40.4620468
-104.7315529	0.00						
8304.00	90.04	90.16	6956.32	2619.62	239.53	2615.80	40.4620460
-104.7311935	0.00						
8404.00	90.04	90.16	6956.24	2719.60	239.24	2715.80	40.4620452
-104.7308342	0.00						
8504.00	90.04	90.16	6956.16	2819.58	238.96	2815.80	40.4620444

SEELEY_FEDERAL_8N-30B-L__REV-A.0__PWP.las

-104.7304748	0.00						
8604.00	90.04	90.16	6956.09	2919.56	238.68	2915.80	40.4620436
-104.7301154	0.00						
8704.00	90.04	90.16	6956.01	3019.54	238.39	3015.80	40.4620427
-104.7297561	0.00						
8804.00	90.04	90.16	6955.93	3119.52	238.11	3115.80	40.4620419
-104.7293967	0.00						
8904.00	90.04	90.16	6955.85	3219.50	237.83	3215.80	40.4620411
-104.7290373	0.00						
9004.00	90.04	90.16	6955.78	3319.48	237.54	3315.80	40.4620403
-104.7286780	0.00						
9104.00	90.04	90.16	6955.70	3419.46	237.26	3415.80	40.4620395
-104.7283186	0.00						
9204.00	90.04	90.16	6955.62	3519.43	236.98	3515.80	40.4620387
-104.7279592	0.00						
9304.00	90.04	90.16	6955.54	3619.41	236.69	3615.80	40.4620379
-104.7275999	0.00						
9404.00	90.04	90.16	6955.47	3719.39	236.41	3715.80	40.4620370
-104.7272405	0.00						
9504.00	90.04	90.16	6955.39	3819.37	236.13	3815.79	40.4620362
-104.7268811	0.00						
9604.00	90.04	90.16	6955.31	3919.35	235.84	3915.79	40.4620354
-104.7265218	0.00						
9704.00	90.04	90.16	6955.23	4019.33	235.56	4015.79	40.4620346
-104.7261624	0.00						
9804.00	90.04	90.16	6955.15	4119.31	235.28	4115.79	40.4620338
-104.7258030	0.00						
9904.00	90.04	90.16	6955.08	4219.29	234.99	4215.79	40.4620329
-104.7254437	0.00						
10004.00	90.04	90.16	6955.00	4319.27	234.71	4315.79	40.4620321
-104.7250843	0.00						
10104.00	90.04	90.16	6954.92	4419.25	234.43	4415.79	40.4620313
-104.7247249	0.00						
10204.00	90.04	90.16	6954.84	4519.22	234.14	4515.79	40.4620304
-104.7243656	0.00						
10304.00	90.04	90.16	6954.77	4619.20	233.86	4615.79	40.4620296
-104.7240062	0.00						
10404.00	90.04	90.16	6954.69	4719.18	233.58	4715.79	40.4620288
-104.7236468	0.00						
10504.00	90.04	90.16	6954.61	4819.16	233.29	4815.79	40.4620280
-104.7232875	0.00						
10604.00	90.04	90.16	6954.53	4919.14	233.01	4915.79	40.4620271
-104.7229281	0.00						
10704.00	90.04	90.16	6954.46	5019.12	232.73	5015.79	40.4620263
-104.7225687	0.00						
10804.00	90.04	90.16	6954.38	5119.10	232.44	5115.79	40.4620255
-104.7222094	0.00						
10904.00	90.04	90.16	6954.30	5219.08	232.16	5215.79	40.4620246

SEELEY_FEDERAL_8N-30B-L__REV-A.0__PWP.las

-104.7218500	0.00						
11004.00	90.04	90.16	6954.22	5319.06	231.88	5315.79	40.4620238
-104.7214906	0.00						
11104.00	90.04	90.16	6954.15	5419.03	231.59	5415.79	40.4620230
-104.7211313	0.00						
11204.00	90.04	90.16	6954.07	5519.01	231.31	5515.79	40.4620221
-104.7207719	0.00						
11304.00	90.04	90.16	6953.99	5618.99	231.03	5615.79	40.4620213
-104.7204125	0.00						
11404.00	90.04	90.16	6953.91	5718.97	230.74	5715.79	40.4620204
-104.7200532	0.00						
11504.00	90.04	90.16	6953.83	5818.95	230.46	5815.79	40.4620196
-104.7196938	0.00						
11604.00	90.04	90.16	6953.76	5918.93	230.18	5915.79	40.4620188
-104.7193344	0.00						
11704.00	90.04	90.16	6953.68	6018.91	229.89	6015.79	40.4620179
-104.7189751	0.00						
11804.00	90.04	90.16	6953.60	6118.89	229.61	6115.78	40.4620171
-104.7186157	0.00						
11904.00	90.04	90.16	6953.52	6218.87	229.33	6215.78	40.4620162
-104.7182563	0.00						
12004.00	90.04	90.16	6953.45	6318.85	229.05	6315.78	40.4620154
-104.7178970	0.00						
12104.00	90.04	90.16	6953.37	6418.82	228.76	6415.78	40.4620145
-104.7175376	0.00						
12204.00	90.04	90.16	6953.29	6518.80	228.48	6515.78	40.4620137
-104.7171782	0.00						
12304.00	90.04	90.16	6953.21	6618.78	228.20	6615.78	40.4620128
-104.7168189	0.00						
12404.00	90.04	90.16	6953.14	6718.76	227.91	6715.78	40.4620120
-104.7164595	0.00						
12504.00	90.04	90.16	6953.06	6818.74	227.63	6815.78	40.4620111
-104.7161001	0.00						
12604.00	90.04	90.16	6952.98	6918.72	227.35	6915.78	40.4620103
-104.7157408	0.00						
12704.00	90.04	90.16	6952.90	7018.70	227.06	7015.78	40.4620094
-104.7153814	0.00						
12804.00	90.04	90.16	6952.83	7118.68	226.78	7115.78	40.4620086
-104.7150221	0.00						
12904.00	90.04	90.16	6952.75	7218.66	226.50	7215.78	40.4620077
-104.7146627	0.00						
13004.00	90.04	90.16	6952.67	7318.63	226.21	7315.78	40.4620068
-104.7143033	0.00						
13104.00	90.04	90.16	6952.59	7418.61	225.93	7415.78	40.4620060
-104.7139440	0.00						
13204.00	90.04	90.16	6952.51	7518.59	225.65	7515.78	40.4620051
-104.7135846	0.00						
13304.00	90.04	90.16	6952.44	7618.57	225.36	7615.78	40.4620043

SEELEY_FEDERAL_8N-30B-L__REV-A.0__PWP.las

-104.7132252	0.00						
13404.00	90.04	90.16	6952.36	7718.55	225.08	7715.78	40.4620034
-104.7128659	0.00						
13504.00	90.04	90.16	6952.28	7818.53	224.80	7815.78	40.4620025
-104.7125065	0.00						
13604.00	90.04	90.16	6952.20	7918.51	224.51	7915.78	40.4620017
-104.7121471	0.00						
13704.00	90.04	90.16	6952.13	8018.49	224.23	8015.78	40.4620008
-104.7117878	0.00						
13804.00	90.04	90.16	6952.05	8118.47	223.95	8115.78	40.4619999
-104.7114284	0.00						
13904.00	90.04	90.16	6951.97	8218.45	223.66	8215.78	40.4619991
-104.7110690	0.00						
14004.00	90.04	90.16	6951.89	8318.42	223.38	8315.78	40.4619982
-104.7107097	0.00						
14104.00	90.04	90.16	6951.82	8418.40	223.10	8415.78	40.4619973
-104.7103503	0.00						
14204.00	90.04	90.16	6951.74	8518.38	222.81	8515.77	40.4619964
-104.7099909	0.00						
14304.00	90.04	90.16	6951.66	8618.36	222.53	8615.77	40.4619956
-104.7096316	0.00						
14404.00	90.04	90.16	6951.58	8718.34	222.25	8715.77	40.4619947
-104.7092722	0.00						
14504.00	90.04	90.16	6951.51	8818.32	221.96	8815.77	40.4619938
-104.7089128	0.00						
14604.00	90.04	90.16	6951.43	8918.30	221.68	8915.77	40.4619930
-104.7085535	0.00						
14704.00	90.04	90.16	6951.35	9018.28	221.40	9015.77	40.4619921
-104.7081941	0.00						
14804.00	90.04	90.16	6951.27	9118.26	221.11	9115.77	40.4619912
-104.7078347	0.00						
14904.00	90.04	90.16	6951.19	9218.23	220.83	9215.77	40.4619903
-104.7074754	0.00						
15004.00	90.04	90.16	6951.12	9318.21	220.55	9315.77	40.4619894
-104.7071160	0.00						
15104.00	90.04	90.16	6951.04	9418.19	220.26	9415.77	40.4619886
-104.7067566	0.00						
15204.00	90.04	90.16	6950.96	9518.17	219.98	9515.77	40.4619877
-104.7063973	0.00						
15304.00	90.04	90.16	6950.88	9618.15	219.70	9615.77	40.4619868
-104.7060379	0.00						
15404.00	90.04	90.16	6950.81	9718.13	219.41	9715.77	40.4619859
-104.7056785	0.00						
15504.00	90.04	90.16	6950.73	9818.11	219.13	9815.77	40.4619850
-104.7053192	0.00						
15604.00	90.04	90.16	6950.65	9918.09	218.85	9915.77	40.4619841
-104.7049598	0.00						
15704.00	90.04	90.16	6950.57	10018.07	218.56	10015.77	40.4619832

SEELEY_FEDERAL_8N-30B-L__REV-A.0__PWP.las

-104.7046004	0.00						
15804.00	90.04	90.16	6950.50	10118.05	218.28	10115.77	40.4619824
-104.7042411	0.00						
15904.00	90.04	90.16	6950.42	10218.02	218.00	10215.77	40.4619815
-104.7038817	0.00						
16004.00	90.04	90.16	6950.34	10318.00	217.71	10315.77	40.4619806
-104.7035223	0.00						
16104.00	90.04	90.16	6950.26	10417.98	217.43	10415.77	40.4619797
-104.7031630	0.00						
16204.00	90.04	90.16	6950.19	10517.96	217.15	10515.77	40.4619788
-104.7028036	0.00						
16304.00	90.04	90.16	6950.11	10617.94	216.86	10615.77	40.4619779
-104.7024442	0.00						
16404.00	90.04	90.16	6950.03	10717.92	216.58	10715.77	40.4619770
-104.7020849	0.00						
16504.00	90.04	90.16	6949.95	10817.90	216.30	10815.76	40.4619761
-104.7017255	0.00						
16604.00	90.04	90.16	6949.87	10917.88	216.01	10915.76	40.4619752
-104.7013661	0.00						
16704.00	90.04	90.16	6949.80	11017.86	215.73	11015.76	40.4619743
-104.7010068	0.00						
16804.00	90.04	90.16	6949.72	11117.83	215.45	11115.76	40.4619734
-104.7006474	0.00						
16904.00	90.04	90.16	6949.64	11217.81	215.17	11215.76	40.4619725
-104.7002880	0.00						
17004.00	90.04	90.16	6949.56	11317.79	214.88	11315.76	40.4619716
-104.6999287	0.00						
17104.00	90.04	90.16	6949.49	11417.77	214.60	11415.76	40.4619707
-104.6995693	0.00						
17204.00	90.04	90.16	6949.41	11517.75	214.32	11515.76	40.4619698
-104.6992099	0.00						
17304.00	90.04	90.16	6949.33	11617.73	214.03	11615.76	40.4619689
-104.6988506	0.00						
17404.00	90.04	90.16	6949.25	11717.71	213.75	11715.76	40.4619680
-104.6984912	0.00						
17504.00	90.04	90.16	6949.18	11817.69	213.47	11815.76	40.4619671
-104.6981319	0.00						
17604.00	90.04	90.16	6949.10	11917.67	213.18	11915.76	40.4619661
-104.6977725	0.00						
17704.00	90.04	90.16	6949.02	12017.65	212.90	12015.76	40.4619652
-104.6974131	0.00						
17730.19	90.04	90.16	6949.00	12043.83	212.82	12041.95	40.4619650
-104.6973190	0.00						



Planned Wellpath Report

SEELEY FEDERAL 8N-30B-L (REV-A.0) PWP

Page 1 of 9



REFERENCE WELLPATH IDENTIFICATION

Operator	SRC ENERGY	Slot	SLOT#10 SEELEY FEDERAL 8N-30B-L (1893'FNL & 1593'FEL, SEC.26)
Area	COLORADO	Well	SEELEY FEDERAL 8N-30B-L
Field	WELD COUNTY (NAD83,TRUE NORTH)	Wellbore	SEELEY FEDERAL 8N-30B-L PWB
Facility	SEC.26-T06N-R66W		

REPORT SETUP INFORMATION

Projection System	NAD83 / Lambert Colorado SP, Northern Zone (501), US feet	Software System	WellArchitect® 5.0
North Reference	True	User	Doddanna
Scale	0.999964	Report Generated	5/10/2018 at 3:15:06 PM
Convergence at slot	0.49° East	Database/Source file	WellArchitectDB/SEELEY_FEDERAL_8N-30B-L_REV-A.0_PWP.xml

WELLPATH LOCATION

	Local coordinates		Grid coordinates		Geographic coordinates	
	North[ft]	East[ft]	Easting[US ft]	Northing[US ft]	Latitude	Longitude
Slot Location	-180.01	-1.64	3211308.36	1411829.15	40°27'41.000"N	104°44'26.138"W
Facility Reference Pt			3211308.46	1412009.16	40°27'42.779"N	104°44'26.117"W
Field Reference Pt			3171284.48	1426358.81	40°30'07.643"N	104°53'02.634"W

WELLPATH DATUM

Calculation method	Minimum curvature	PROPETRO 12 (4') (RKB) to Facility Vertical Datum	4701.00ft
Horizontal Reference Pt	Slot	PROPETRO 12 (4') (RKB) to Mean Sea Level	4701.00ft
Vertical Reference Pt	PROPETRO 12 (4') (RKB)	PROPETRO 12 (4') (RKB) to Mud Line at Slot (SLOT#10 SEELEY FEDERAL 8N-30B-L (1893'FNL & 1593'FEL, SEC.26))	4701.00ft
MD Reference Pt	PROPETRO 12 (4') (RKB)	Section Origin	N 0.00, E 0.00 ft
Field Vertical Reference	Mean Sea Level	Section Azimuth	88.99°



SRC ENERGY

Planned Wellpath Report

SEELEY FEDERAL 8N-30B-L (REV-A.0) PWP

Page 2 of 9

**REFERENCE WELLPATH IDENTIFICATION**

Operator	SRC ENERGY	Slot	SLOT#10 SEELEY FEDERAL 8N-30B-L (1893'FNL & 1593'FEL, SEC.26)
Area	COLORADO	Well	SEELEY FEDERAL 8N-30B-L
Field	WELD COUNTY (NAD83,TRUE NORTH)	Wellbore	SEELEY FEDERAL 8N-30B-L PWB
Facility	SEC.26-T06N-R66W		

WELLPATH DATA (184 stations) † = interpolated/extrapolated station

MD [ft]	Inclination [°]	Azimuth [°]	TVD [ft]	Vert Sect [ft]	North [ft]	East [ft]	DLS [°/100ft]	Comments
0.00†	0.000	78.640	0.00	0.00	0.00	0.00	0.00	
4.00	0.000	78.640	4.00	0.00	0.00	0.00	0.00	Tie On
104.00†	0.000	78.640	104.00	0.00	0.00	0.00	0.00	
204.00†	0.000	78.640	204.00	0.00	0.00	0.00	0.00	
300.00	0.000	78.640	300.00	0.00	0.00	0.00	0.00	End of Tangent
304.00†	0.080	78.640	304.00	0.00	0.00	0.00	2.00	
404.00†	2.080	78.640	403.98	1.86	0.37	1.85	2.00	
504.00†	4.080	78.640	503.83	7.14	1.43	7.12	2.00	
604.00†	6.080	78.640	603.43	15.85	3.17	15.80	2.00	
704.00†	8.080	78.640	702.66	27.98	5.60	27.88	2.00	
804.00†	10.080	78.640	801.40	43.50	8.71	43.35	2.00	
848.11	10.962	78.640	844.77	51.42	10.30	51.25	2.00	End of Build (XS)
904.00†	10.962	78.640	899.64	61.88	12.39	61.67	0.00	
1004.00†	10.962	78.640	997.82	80.59	16.14	80.31	0.00	
1104.00†	10.962	78.640	1095.99	99.29	19.88	98.96	0.00	
1204.00†	10.962	78.640	1194.17	118.00	23.63	117.60	0.00	
1304.00†	10.962	78.640	1292.34	136.71	27.37	136.24	0.00	
1404.00†	10.962	78.640	1390.52	155.41	31.12	154.89	0.00	
1504.00†	10.962	78.640	1488.69	174.12	34.86	173.53	0.00	
1604.00†	10.962	78.640	1586.87	192.83	38.61	192.17	0.00	
1704.00†	10.962	78.640	1685.04	211.53	42.35	210.82	0.00	
1804.00†	10.962	78.640	1783.22	230.24	46.10	229.46	0.00	
1904.00†	10.962	78.640	1881.40	248.95	49.84	248.11	0.00	
2004.00†	10.962	78.640	1979.57	267.65	53.59	266.75	0.00	
2104.00†	10.962	78.640	2077.75	286.36	57.34	285.39	0.00	
2204.00†	10.962	78.640	2175.92	305.07	61.08	304.04	0.00	
2304.00†	10.962	78.640	2274.10	323.77	64.83	322.68	0.00	
2404.00†	10.962	78.640	2372.27	342.48	68.57	341.32	0.00	
2504.00†	10.962	78.640	2470.45	361.19	72.32	359.97	0.00	
2604.00†	10.962	78.640	2568.62	379.89	76.06	378.61	0.00	



Planned Wellpath Report

SEELEY FEDERAL 8N-30B-L (REV-A.0) PWP

Page 3 of 9



REFERENCE WELLPATH IDENTIFICATION			
Operator	SRC ENERGY	Slot	SLOT#10 SEELEY FEDERAL 8N-30B-L (1893'FNL & 1593'FEL, SEC.26)
Area	COLORADO	Well	SEELEY FEDERAL 8N-30B-L
Field	WELD COUNTY (NAD83,TRUE NORTH)	Wellbore	SEELEY FEDERAL 8N-30B-L PWB
Facility	SEC.26-T06N-R66W		

WELLPATH DATA (184 stations) † = interpolated/extrapolated station								
MD [ft]	Inclination [°]	Azimuth [°]	TVD [ft]	Vert Sect [ft]	North [ft]	East [ft]	DLS [°/100ft]	Comments
2704.00†	10.962	78.640	2666.80	398.60	79.81	397.25	0.00	
2804.00†	10.962	78.640	2764.97	417.31	83.55	415.90	0.00	
2904.00†	10.962	78.640	2863.15	436.02	87.30	434.54	0.00	
3004.00†	10.962	78.640	2961.32	454.72	91.05	453.18	0.00	
3104.00†	10.962	78.640	3059.50	473.43	94.79	471.83	0.00	
3204.00†	10.962	78.640	3157.67	492.14	98.54	490.47	0.00	
3304.00†	10.962	78.640	3255.85	510.84	102.28	509.11	0.00	
3404.00†	10.962	78.640	3354.02	529.55	106.03	527.76	0.00	
3504.00†	10.962	78.640	3452.20	548.26	109.77	546.40	0.00	
3604.00†	10.962	78.640	3550.38	566.96	113.52	565.05	0.00	
3704.00†	10.962	78.640	3648.55	585.67	117.26	583.69	0.00	
3804.00†	10.962	78.640	3746.73	604.38	121.01	602.33	0.00	
3904.00†	10.962	78.640	3844.90	623.08	124.76	620.98	0.00	
4004.00†	10.962	78.640	3943.08	641.79	128.50	639.62	0.00	
4104.00†	10.962	78.640	4041.25	660.50	132.25	658.26	0.00	
4204.00†	10.962	78.640	4139.43	679.20	135.99	676.91	0.00	
4304.00†	10.962	78.640	4237.60	697.91	139.74	695.55	0.00	
4404.00†	10.962	78.640	4335.78	716.62	143.48	714.19	0.00	
4504.00†	10.962	78.640	4433.95	735.32	147.23	732.84	0.00	
4604.00†	10.962	78.640	4532.13	754.03	150.97	751.48	0.00	
4704.00†	10.962	78.640	4630.30	772.74	154.72	770.12	0.00	
4804.00†	10.962	78.640	4728.48	791.44	158.47	788.77	0.00	
4904.00†	10.962	78.640	4826.65	810.15	162.21	807.41	0.00	
5004.00†	10.962	78.640	4924.83	828.86	165.96	826.05	0.00	
5104.00†	10.962	78.640	5023.01	847.56	169.70	844.70	0.00	
5204.00†	10.962	78.640	5121.18	866.27	173.45	863.34	0.00	
5304.00†	10.962	78.640	5219.36	884.98	177.19	881.98	0.00	
5404.00†	10.962	78.640	5317.53	903.69	180.94	900.63	0.00	
5504.00†	10.962	78.640	5415.71	922.39	184.68	919.27	0.00	
5604.00†	10.962	78.640	5513.88	941.10	188.43	937.92	0.00	



Planned Wellpath Report

SEELEY FEDERAL 8N-30B-L (REV-A.0) PWP

Page 4 of 9



REFERENCE WELLPATH IDENTIFICATION			
Operator	SRC ENERGY	Slot	SLOT#10 SEELEY FEDERAL 8N-30B-L (1893'FNL & 1593'FEL, SEC.26)
Area	COLORADO	Well	SEELEY FEDERAL 8N-30B-L
Field	WELD COUNTY (NAD83,TRUE NORTH)	Wellbore	SEELEY FEDERAL 8N-30B-L PWB
Facility	SEC.26-T06N-R66W		

WELLPATH DATA (184 stations) † = interpolated/extrapolated station								
MD [ft]	Inclination [°]	Azimuth [°]	TVD [ft]	Vert Sect [ft]	North [ft]	East [ft]	DLS [°/100ft]	Comments
5704.00†	10.962	78.640	5612.06	959.81	192.18	956.56	0.00	
5804.00†	10.962	78.640	5710.23	978.51	195.92	975.20	0.00	
5904.00†	10.962	78.640	5808.41	997.22	199.67	993.85	0.00	
6004.00†	10.962	78.640	5906.58	1015.93	203.41	1012.49	0.00	
6104.00†	10.962	78.640	6004.76	1034.63	207.16	1031.13	0.00	
6204.00†	10.962	78.640	6102.93	1053.34	210.90	1049.78	0.00	
6304.00†	10.962	78.640	6201.11	1072.05	214.65	1068.42	0.00	
6404.00†	10.962	78.640	6299.28	1090.75	218.39	1087.06	0.00	
6504.00†	10.962	78.640	6397.46	1109.46	222.14	1105.71	0.00	
6546.71	10.962	78.640	6439.39	1117.45	223.74	1113.67	0.00	End of Tangent (XS)
6604.00†	16.045	82.430	6495.08	1130.68	225.86	1126.87	9.00	
6704.00†	24.987	85.399	6588.64	1165.56	229.38	1161.69	9.00	
6804.00†	33.959	86.868	6675.62	1214.65	232.61	1210.73	9.00	
6904.00†	42.941	87.778	6753.85	1276.75	235.46	1272.78	9.00	
7004.00†	51.928	88.424	6821.43	1350.31	237.87	1346.32	9.00	
7104.00†	60.919	88.928	6876.67	1433.54	239.77	1429.53	9.00	
7204.00†	69.911	89.350	6918.24	1524.38	241.12	1520.36	9.00	
7304.00†	78.903	89.726	6945.09	1620.60	241.89	1616.57	9.00	
7404.00†	87.896	90.079	6956.57	1719.82	242.06	1715.81	9.00	
7427.88	90.044	90.162	6957.00†	1743.69	242.01	1739.69	9.00	End of 3D Arc (XS)
7504.00†	90.044	90.162	6956.94	1819.79	241.79	1815.80	0.00	
7604.00†	90.044	90.162	6956.86	1919.77	241.51	1915.80	0.00	
7704.00†	90.044	90.162	6956.79	2019.75	241.23	2015.80	0.00	
7804.00†	90.044	90.162	6956.71	2119.73	240.94	2115.80	0.00	
7904.00†	90.044	90.162	6956.63	2219.71	240.66	2215.80	0.00	
8004.00†	90.044	90.162	6956.55	2319.69	240.38	2315.80	0.00	
8104.00†	90.044	90.162	6956.47	2419.67	240.09	2415.80	0.00	
8204.00†	90.044	90.162	6956.40	2519.65	239.81	2515.80	0.00	
8304.00†	90.044	90.162	6956.32	2619.62	239.53	2615.80	0.00	
8404.00†	90.044	90.162	6956.24	2719.60	239.24	2715.80	0.00	



Planned Wellpath Report

SEELEY FEDERAL 8N-30B-L (REV-A.0) PWP

Page 5 of 9



REFERENCE WELLPATH IDENTIFICATION			
Operator	SRC ENERGY	Slot	SLOT#10 SEELEY FEDERAL 8N-30B-L (1893'FNL & 1593'FEL, SEC.26)
Area	COLORADO	Well	SEELEY FEDERAL 8N-30B-L
Field	WELD COUNTY (NAD83,TRUE NORTH)	Wellbore	SEELEY FEDERAL 8N-30B-L PWB
Facility	SEC.26-T06N-R66W		

WELLPATH DATA (184 stations) † = interpolated/extrapolated station								
MD [ft]	Inclination [°]	Azimuth [°]	TVD [ft]	Vert Sect [ft]	North [ft]	East [ft]	DLS [°/100ft]	Comments
8504.00†	90.044	90.162	6956.16	2819.58	238.96	2815.80	0.00	
8604.00†	90.044	90.162	6956.09	2919.56	238.68	2915.80	0.00	
8704.00†	90.044	90.162	6956.01	3019.54	238.39	3015.80	0.00	
8804.00†	90.044	90.162	6955.93	3119.52	238.11	3115.80	0.00	
8904.00†	90.044	90.162	6955.85	3219.50	237.83	3215.80	0.00	
9004.00†	90.044	90.162	6955.78	3319.48	237.54	3315.80	0.00	
9104.00†	90.044	90.162	6955.70	3419.46	237.26	3415.80	0.00	
9204.00†	90.044	90.162	6955.62	3519.43	236.98	3515.80	0.00	
9304.00†	90.044	90.162	6955.54	3619.41	236.69	3615.80	0.00	
9404.00†	90.044	90.162	6955.47	3719.39	236.41	3715.80	0.00	
9504.00†	90.044	90.162	6955.39	3819.37	236.13	3815.79	0.00	
9604.00†	90.044	90.162	6955.31	3919.35	235.84	3915.79	0.00	
9704.00†	90.044	90.162	6955.23	4019.33	235.56	4015.79	0.00	
9804.00†	90.044	90.162	6955.15	4119.31	235.28	4115.79	0.00	
9904.00†	90.044	90.162	6955.08	4219.29	234.99	4215.79	0.00	
10004.00†	90.044	90.162	6955.00	4319.27	234.71	4315.79	0.00	
10104.00†	90.044	90.162	6954.92	4419.25	234.43	4415.79	0.00	
10204.00†	90.044	90.162	6954.84	4519.22	234.14	4515.79	0.00	
10304.00†	90.044	90.162	6954.77	4619.20	233.86	4615.79	0.00	
10404.00†	90.044	90.162	6954.69	4719.18	233.58	4715.79	0.00	
10504.00†	90.044	90.162	6954.61	4819.16	233.29	4815.79	0.00	
10604.00†	90.044	90.162	6954.53	4919.14	233.01	4915.79	0.00	
10704.00†	90.044	90.162	6954.46	5019.12	232.73	5015.79	0.00	
10804.00†	90.044	90.162	6954.38	5119.10	232.44	5115.79	0.00	
10904.00†	90.044	90.162	6954.30	5219.08	232.16	5215.79	0.00	
11004.00†	90.044	90.162	6954.22	5319.06	231.88	5315.79	0.00	
11104.00†	90.044	90.162	6954.15	5419.03	231.59	5415.79	0.00	
11204.00†	90.044	90.162	6954.07	5519.01	231.31	5515.79	0.00	
11304.00†	90.044	90.162	6953.99	5618.99	231.03	5615.79	0.00	
11404.00†	90.044	90.162	6953.91	5718.97	230.74	5715.79	0.00	



Planned Wellpath Report

SEELEY FEDERAL 8N-30B-L (REV-A.0) PWP

Page 6 of 9



REFERENCE WELLPATH IDENTIFICATION

Operator	SRC ENERGY	Slot	SLOT#10 SEELEY FEDERAL 8N-30B-L (1893'FNL & 1593'FEL, SEC.26)
Area	COLORADO	Well	SEELEY FEDERAL 8N-30B-L
Field	WELD COUNTY (NAD83,TRUE NORTH)	Wellbore	SEELEY FEDERAL 8N-30B-L PWB
Facility	SEC.26-T06N-R66W		

WELLPATH DATA (184 stations) † = interpolated/extrapolated station

MD [ft]	Inclination [°]	Azimuth [°]	TVD [ft]	Vert Sect [ft]	North [ft]	East [ft]	DLS [°/100ft]	Comments
11504.00†	90.044	90.162	6953.83	5818.95	230.46	5815.79	0.00	
11604.00†	90.044	90.162	6953.76	5918.93	230.18	5915.79	0.00	
11704.00†	90.044	90.162	6953.68	6018.91	229.89	6015.79	0.00	
11804.00†	90.044	90.162	6953.60	6118.89	229.61	6115.78	0.00	
11904.00†	90.044	90.162	6953.52	6218.87	229.33	6215.78	0.00	
12004.00†	90.044	90.162	6953.45	6318.85	229.05	6315.78	0.00	
12104.00†	90.044	90.162	6953.37	6418.82	228.76	6415.78	0.00	
12204.00†	90.044	90.162	6953.29	6518.80	228.48	6515.78	0.00	
12304.00†	90.044	90.162	6953.21	6618.78	228.20	6615.78	0.00	
12404.00†	90.044	90.162	6953.14	6718.76	227.91	6715.78	0.00	
12504.00†	90.044	90.162	6953.06	6818.74	227.63	6815.78	0.00	
12604.00†	90.044	90.162	6952.98	6918.72	227.35	6915.78	0.00	
12704.00†	90.044	90.162	6952.90	7018.70	227.06	7015.78	0.00	
12804.00†	90.044	90.162	6952.83	7118.68	226.78	7115.78	0.00	
12904.00†	90.044	90.162	6952.75	7218.66	226.50	7215.78	0.00	
13004.00†	90.044	90.162	6952.67	7318.63	226.21	7315.78	0.00	
13104.00†	90.044	90.162	6952.59	7418.61	225.93	7415.78	0.00	
13204.00†	90.044	90.162	6952.51	7518.59	225.65	7515.78	0.00	
13304.00†	90.044	90.162	6952.44	7618.57	225.36	7615.78	0.00	
13404.00†	90.044	90.162	6952.36	7718.55	225.08	7715.78	0.00	
13504.00†	90.044	90.162	6952.28	7818.53	224.80	7815.78	0.00	
13604.00†	90.044	90.162	6952.20	7918.51	224.51	7915.78	0.00	
13704.00†	90.044	90.162	6952.13	8018.49	224.23	8015.78	0.00	
13804.00†	90.044	90.162	6952.05	8118.47	223.95	8115.78	0.00	
13904.00†	90.044	90.162	6951.97	8218.45	223.66	8215.78	0.00	
14004.00†	90.044	90.162	6951.89	8318.42	223.38	8315.78	0.00	
14104.00†	90.044	90.162	6951.82	8418.40	223.10	8415.78	0.00	
14204.00†	90.044	90.162	6951.74	8518.38	222.81	8515.77	0.00	
14304.00†	90.044	90.162	6951.66	8618.36	222.53	8615.77	0.00	
14404.00†	90.044	90.162	6951.58	8718.34	222.25	8715.77	0.00	



Planned Wellpath Report

SEELEY FEDERAL 8N-30B-L (REV-A.0) PWP

Page 7 of 9



REFERENCE WELLPATH IDENTIFICATION			
Operator	SRC ENERGY	Slot	SLOT#10 SEELEY FEDERAL 8N-30B-L (1893'FNL & 1593'FEL, SEC.26)
Area	COLORADO	Well	SEELEY FEDERAL 8N-30B-L
Field	WELD COUNTY (NAD83,TRUE NORTH)	Wellbore	SEELEY FEDERAL 8N-30B-L PWB
Facility	SEC.26-T06N-R66W		

WELLPATH DATA (184 stations) † = interpolated/extrapolated station								
MD [ft]	Inclination [°]	Azimuth [°]	TVD [ft]	Vert Sect [ft]	North [ft]	East [ft]	DLS [°/100ft]	Comments
14504.00†	90.044	90.162	6951.51	8818.32	221.96	8815.77	0.00	
14604.00†	90.044	90.162	6951.43	8918.30	221.68	8915.77	0.00	
14704.00†	90.044	90.162	6951.35	9018.28	221.40	9015.77	0.00	
14804.00†	90.044	90.162	6951.27	9118.26	221.11	9115.77	0.00	
14904.00†	90.044	90.162	6951.19	9218.23	220.83	9215.77	0.00	
15004.00†	90.044	90.162	6951.12	9318.21	220.55	9315.77	0.00	
15104.00†	90.044	90.162	6951.04	9418.19	220.26	9415.77	0.00	
15204.00†	90.044	90.162	6950.96	9518.17	219.98	9515.77	0.00	
15304.00†	90.044	90.162	6950.88	9618.15	219.70	9615.77	0.00	
15404.00†	90.044	90.162	6950.81	9718.13	219.41	9715.77	0.00	
15504.00†	90.044	90.162	6950.73	9818.11	219.13	9815.77	0.00	
15604.00†	90.044	90.162	6950.65	9918.09	218.85	9915.77	0.00	
15704.00†	90.044	90.162	6950.57	10018.07	218.56	10015.77	0.00	
15804.00†	90.044	90.162	6950.50	10118.05	218.28	10115.77	0.00	
15904.00†	90.044	90.162	6950.42	10218.02	218.00	10215.77	0.00	
16004.00†	90.044	90.162	6950.34	10318.00	217.71	10315.77	0.00	
16104.00†	90.044	90.162	6950.26	10417.98	217.43	10415.77	0.00	
16204.00†	90.044	90.162	6950.19	10517.96	217.15	10515.77	0.00	
16304.00†	90.044	90.162	6950.11	10617.94	216.86	10615.77	0.00	
16404.00†	90.044	90.162	6950.03	10717.92	216.58	10715.77	0.00	
16504.00†	90.044	90.162	6949.95	10817.90	216.30	10815.76	0.00	
16604.00†	90.044	90.162	6949.87	10917.88	216.01	10915.76	0.00	
16704.00†	90.044	90.162	6949.80	11017.86	215.73	11015.76	0.00	
16804.00†	90.044	90.162	6949.72	11117.83	215.45	11115.76	0.00	
16904.00†	90.044	90.162	6949.64	11217.81	215.17	11215.76	0.00	
17004.00†	90.044	90.162	6949.56	11317.79	214.88	11315.76	0.00	
17104.00†	90.044	90.162	6949.49	11417.77	214.60	11415.76	0.00	
17204.00†	90.044	90.162	6949.41	11517.75	214.32	11515.76	0.00	
17304.00†	90.044	90.162	6949.33	11617.73	214.03	11615.76	0.00	
17404.00†	90.044	90.162	6949.25	11717.71	213.75	11715.76	0.00	



Planned Wellpath Report

SEELEY FEDERAL 8N-30B-L (REV-A.0) PWP

Page 8 of 9



REFERENCE WELLPATH IDENTIFICATION			
Operator	SRC ENERGY	Slot	SLOT#10 SEELEY FEDERAL 8N-30B-L (1893'FNL & 1593'FEL, SEC.26)
Area	COLORADO	Well	SEELEY FEDERAL 8N-30B-L
Field	WELD COUNTY (NAD83,TRUE NORTH)	Wellbore	SEELEY FEDERAL 8N-30B-L PWB
Facility	SEC.26-T06N-R66W		

WELLPATH DATA (184 stations) † = interpolated/extrapolated station								
MD [ft]	Inclination [°]	Azimuth [°]	TVD [ft]	Vert Sect [ft]	North [ft]	East [ft]	DLS [°/100ft]	Comments
17504.00†	90.044	90.162	6949.18	11817.69	213.47	11815.76	0.00	
17604.00†	90.044	90.162	6949.10	11917.67	213.18	11915.76	0.00	
17704.00†	90.044	90.162	6949.02	12017.65	212.90	12015.76	0.00	
17730.19	90.044	90.162	6949.00 ²	12043.83	212.82	12041.95	0.00	End of Tangent (XS)

HOLE & CASING SECTIONS									
- Ref Wellbore: SEELEY FEDERAL 8N-30B-L PWB					Ref Wellpath: SEELEY FEDERAL 8N-30B-L (REV-A.0) PWP				
String/Diameter	Start MD [ft]	End MD [ft]	Interval [ft]	Start TVD [ft]	End TVD [ft]	Start N/S [ft]	Start E/W [ft]	End N/S [ft]	End E/W [ft]
13.5in Open Hole	4.00	1750.00	1746.00	4.00	1730.21	0.00	0.00	44.08	219.39
9.625in Casing Surface	4.00	1750.00	1746.00	4.00	1730.21	0.00	0.00	44.08	219.39
8.5in Open Hole	1750.00	17730.19	15980.19	1730.21	6949.00	44.08	219.39	212.82	12041.95



Planned Wellpath Report

SEELEY FEDERAL 8N-30B-L (REV-A.0) PWP

Page 9 of 9



REFERENCE WELLPATH IDENTIFICATION			
Operator	SRC ENERGY	Slot	SLOT#10 SEELEY FEDERAL 8N-30B-L (1893'FNL & 1593'FEL, SEC.26)
Area	COLORADO	Well	SEELEY FEDERAL 8N-30B-L
Field	WELD COUNTY (NAD83,TRUE NORTH)	Wellbore	SEELEY FEDERAL 8N-30B-L PWB
Facility	SEC.26-T06N-R66W		

TARGETS									
Name	MD [ft]	TVD [ft]	North [ft]	East [ft]	Grid East [US ft]	Grid North [US ft]	Latitude	Longitude	Shape
EAST HALF OF SEC.02-T05N-R66W		-22.00	180.03	1.62	3211308.44	1412009.18	40°27'42.779"N	104°44'26.117"W	polygon
EAST HALF OF SEC.26-T06N-R66W		-22.00	180.03	1.62	3211308.44	1412009.18	40°27'42.779"N	104°44'26.117"W	polygon
EAST HALF OF SEC.35-T06N-R66W		-22.00	180.03	1.62	3211308.44	1412009.18	40°27'42.779"N	104°44'26.117"W	polygon
SEC.25-T06N-R66W		-22.00	180.03	1.62	3211308.44	1412009.18	40°27'42.779"N	104°44'26.117"W	polygon
SEC.30-T06N-R65W		-22.00	180.03	1.62	3211308.44	1412009.18	40°27'42.779"N	104°44'26.117"W	polygon
SOUTH HALF OF SEC.19-T06N-R65W		-22.00	180.03	1.62	3211308.44	1412009.18	40°27'42.779"N	104°44'26.117"W	polygon
SOUTH HALF OF SEC.24-T06N-R66W		-22.00	180.03	1.62	3211308.44	1412009.18	40°27'42.779"N	104°44'26.117"W	polygon
2) SEELEY FEDERAL 8N-30B-L BHL ON PLAT (1645'FNL & 150'FEL, SEC.30)	17730.19	6949.00	212.82	12041.95	3223347.58	1412145.08	40°27'43.074"N	104°41'50.348"W	circle
1) SEELEY FEDERAL 8N-30B-L TOP OF PROD ON PLAT (1649'FNL & 150'FWL, SEC.25)	7427.88	6957.00	242.01	1739.69	3213045.85	1412086.03	40°27'43.391"N	104°44'03.631"W	circle

SURVEY PROGRAM -				
Ref Wellbore: SEELEY FEDERAL 8N-30B-L PWB		Ref Wellpath: SEELEY FEDERAL 8N-30B-L (REV-A.0) PWP		
Start MD [ft]	End MD [ft]	Positional Uncertainty Model	Log Name/Comment	Wellbore
4.00	1750.00	BHI NaviTrak (Rotating+Axial Corr)		SEELEY FEDERAL 8N-30B-L PWB
1750.00	17730.19	BHI AutoTrak Curve (IFR1, Short)		SEELEY FEDERAL 8N-30B-L PWB