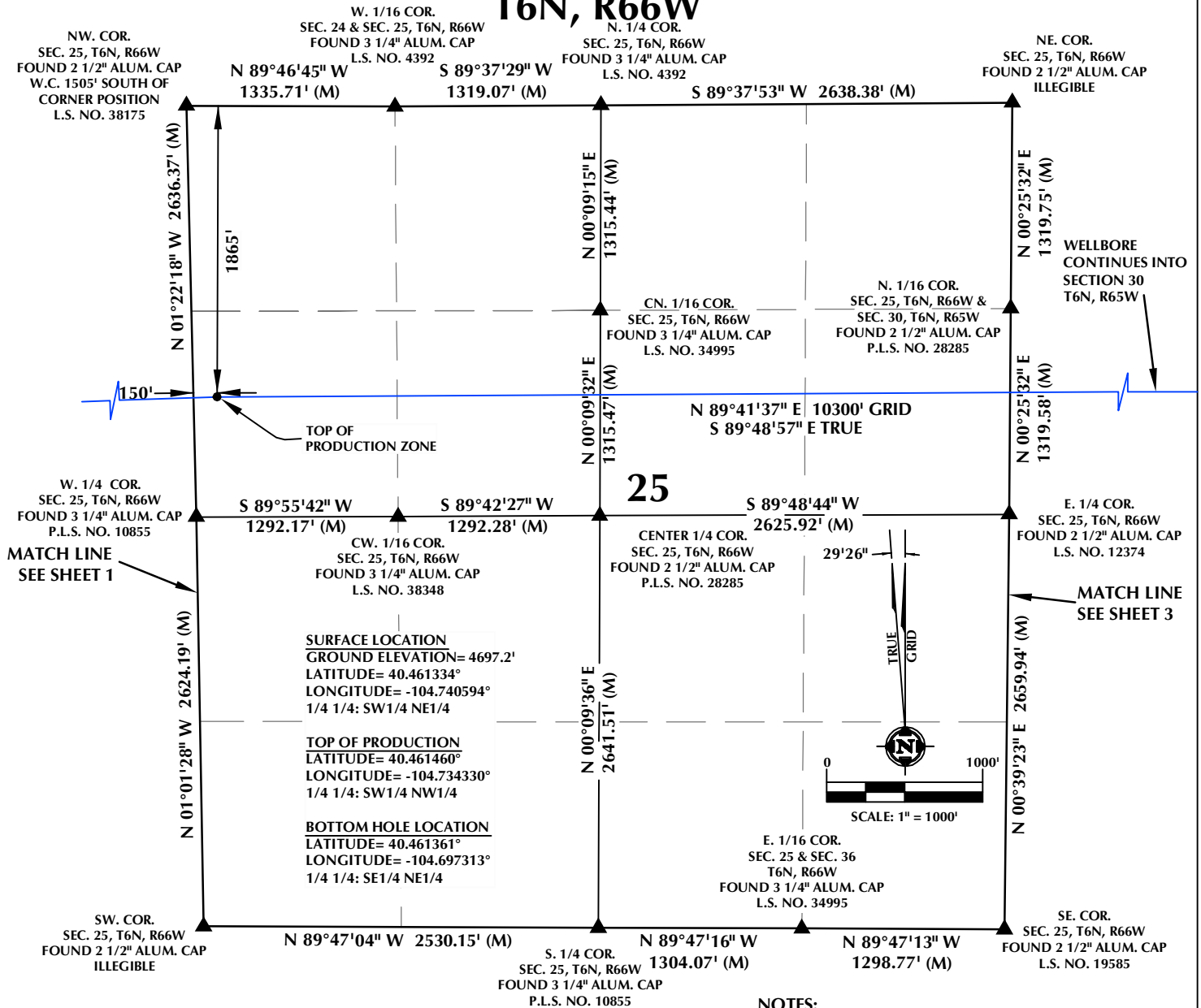




# T6N, R66W



## CERTIFICATE OF SURVEYOR:

THIS IS TO CERTIFY THAT THE ABOVE MAP WAS PREPARED FROM FIELD NOTES OF ACTUAL SURVEY MADE BY ME OR UNDER MY SUPERVISION AND THAT THE SAME ARE TRUE AND CORRECT TO THE BEST OF MY KNOWLEDGE AND BELIEF. THIS CERTIFICATE DOES NOT REPRESENT A LAND SURVEY PLAT OR IMPROVEMENT SURVEY PLAT AS DEFINED BY C.R.S. 38-513-02 AND CANNOT BE RELIED UPON TO DETERMINE OWNERSHIP.

*John R. Slaugh*  
 JOHN R. SLAUGH  
 PROFESSIONAL LAND SURVEYOR  
 COLORADO REGISTRATION NUMBER 38230  
 2/28/18

**NOTICE:**  
 ACCORDING TO COLORADO STATE LAW YOU MUST COMMENCE A LEGAL ACTION BASED UPON ANY DEFECT IN THIS SURVEY WITHIN THREE YEARS AFTER YOU FIRST DISCOVER SUCH DEFECT. IN NO EVENT MAY ANY ACTION BASED UPON ANY DEFECT IN THIS SURVEY BE COMMENCED MORE THAN TEN YEARS FROM THE DATE ON THE CERTIFICATION SHOWN HEREON.

## WELL DISTANCES:

BUILDING: ±1129' S  
 BUILDING UNIT: ±1242' S  
 HIGH OCCUPANCY BUILDING UNIT: ±5051' SW  
 DESIGNATED OUTSIDE ACTIVITY AREA: 5280'+  
 PUBLIC ROAD: ±1018' NE  
 ABOVE GROUND UTILITY: ±1011' NE  
 RAILROAD: 5280'+  
 PROPERTY LINE: ±252' E

## NOTES:

- ▲ INDICATES SECTION CORNER.
- INDICATES CALCULATED CORNER.
- DRAWING LATITUDE AND LONGITUDE COORDINATES ARE NAD 83 (2011)(EPOCH:2010).
- ELEVATION BASED ON NAVD88 (GEOID12B).
- BASIS OF BEARING DERIVED FROM COLORADO COORDINATE SYSTEM OF 1983 NORTH ZONE.
- ALL MEASURED DISTANCES ARE GRID.
- COMBINED SCALE FACTOR: .99974177 CALCULATED FROM THE E. 1/4 CORNER OF SECTION 26, T6N, R66W.
- OPERATOR: PRESTON KNUSTEN / PDOP = 1.2.
- SEE ADDENDUM TO WELL LOCATION CERTIFICATE FOR EXISTING IMPROVEMENTS WITHIN 500' OF THE WELL PAD.
- WELL FOOTAGES ARE MEASURED AT RIGHT ANGLES TO THE SECTION LINES.
- THE BOTTOM OF HOLE BEARS N89°41'37"E, 10300' FROM THE TOP OF PRODUCTION ZONE.

## WELL PAD - CHALK-SEELEY FEDERAL 7-26 PAD

SEELEY FEDERAL 8C-30-L  
 WELL LOCATION CERTIFICATE  
 1913' FNL & 1594' FEL SWNE (SURFACE)  
 LOCATED IN SECTION 26  
 1865' FNL & 150' FWL SWNW (TOP OF PRODUCTION)  
 LOCATED IN SECTION 25  
 T6N, R66W, 6TH P.M.  
 1865' FNL & 150' FEL SENE (BOTTOM)  
 LOCATED IN SECTION 30  
 T6N, R65W, 6TH P.M.  
 WELD COUNTY, COLORADO



**SRC ENERGY**

1675 Broadway, Suite 2600  
 Denver, Colorado 80202

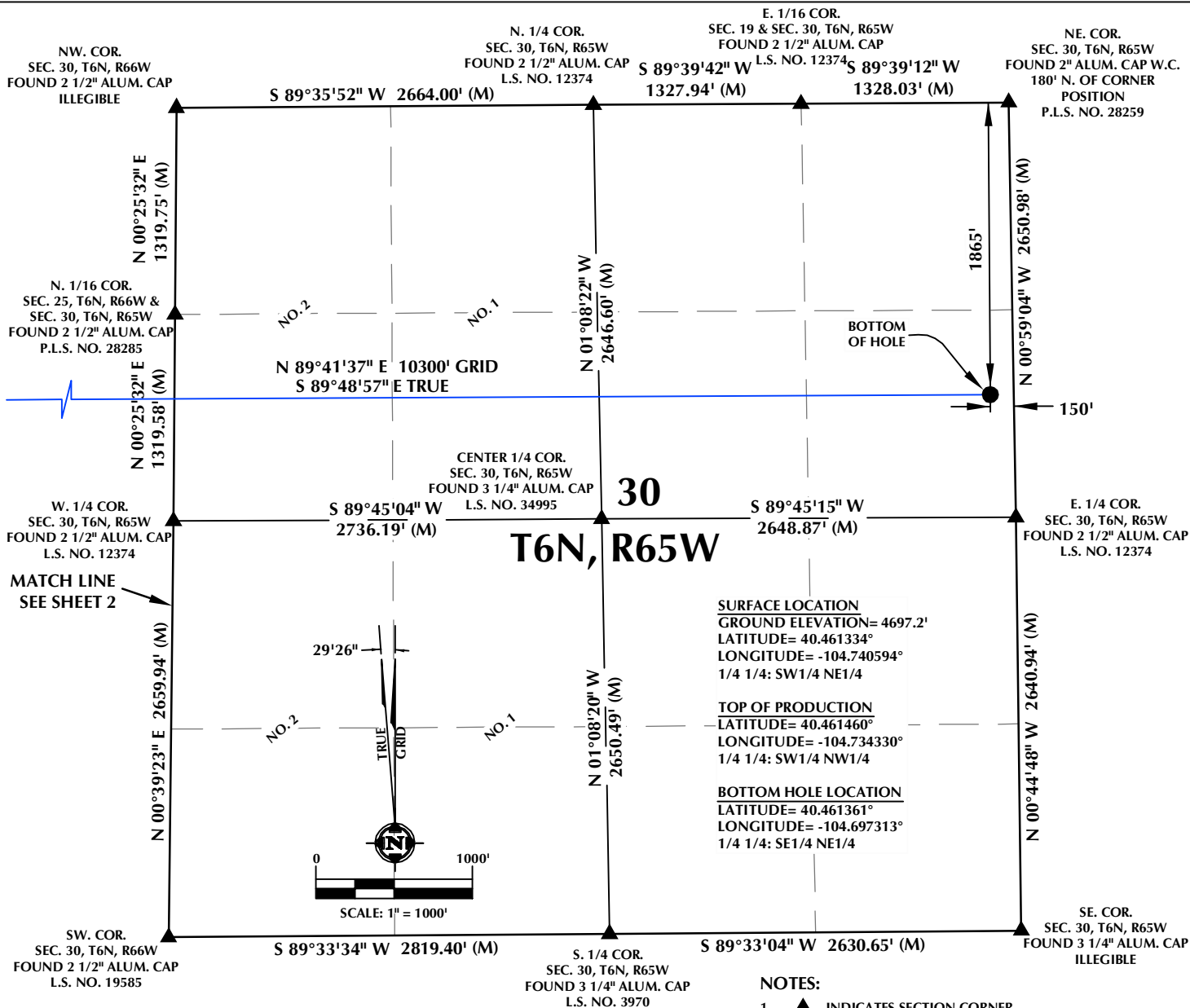


## CONSULTING, LLC

**SHERIDAN OFFICE**  
 1095 Saberton Avenue  
 Sheridan, Wyoming 82801  
 Phone 307-674-0609

**LOVELAND OFFICE**  
 1635 Foxtrail Drive, Suite 204  
 Loveland, Colorado 80538  
 Phone 970-776-4331

DRAFTED BY:	LMO	CHECKED BY:	JRS	SHEET NO:
DATE DRAFTED:	9/26/17	DATE SURVEYED:	7/7/17	2
REVISED:	2/28/18	FILE NAME:	17-41	2 OF 3



# **CERTIFICATE OF SURVEYOR:**

THIS IS TO CERTIFY THAT THE ABOVE MAP WAS PREPARED FROM FIELD NOTES OF ACTUAL SURVEY MADE BY ME OR UNDER MY SUPERVISION AND THAT THE SAME ARE TRUE AND CORRECT TO THE BEST OF MY KNOWLEDGE AND BELIEF. THIS CERTIFICATE DOES NOT REPRESENT A LAND SURVEY PLAT OR IMPROVEMENT SURVEY PLAT AS DEFINED BY C.R.S. 2019-10-10 AND CANNOT BE RELIED UPON TO DETERMINE OWNERSHIP.

JOHN R. SLAUGH  
 PROFESSIONAL LAND SURVEYOR  
 COLORADO REGISTRATION NUMBER 38230

**NOTICE:**  
 ACCORDING TO COLORADO STATE LAW YOU MUST COMMENCE LEGAL ACTION BASED UPON ANY DEFECT IN THIS SURVEY WITHIN THREE YEARS AFTER YOU FIRST DISCOVER SUCH DEFECT. IN NO EVENT MAY ANY ACTION BASED UPON ANY DEFECT IN THIS SURVEY BE COMMENCED MORE THAN TEN YEARS FROM THE DATE ON THE CERTIFICATION SHOWN HEREON.

## **WELL DISTANCES:**

BUILDING: ±1129' S  
 BUILDING UNIT: ±1242' S  
 HIGH OCCUPANCY BUILDING UNIT: ±5051' SW  
 DESIGNATED OUTSIDE ACTIVITY AREA: 5280'+  
 PUBLIC ROAD: ±1018' NE  
 ABOVE GROUND UTILITY: ±1011' NE  
 RAILROAD: 5280'+  
 PROPERTY LINE: ±252' E

## **NOTES:**

- INDICATES SECTION CORNER.
- INDICATES CALCULATED CORNER.
- DRAWING LATITUDE AND LONGITUDE COORDINATES ARE NAD 83 (2011)(EPOCH:2010).
- ELEVATION BASED ON NAVD88 (GEOID12B).
- BASIS OF BEARING DERIVED FROM COLORADO COORDINATE SYSTEM OF 1983 NORTH ZONE.
- ALL MEASURED DISTANCES ARE GRID.
- COMBINED SCALE FACTOR: .99974177 CALCULATED FROM THE E. 1/4 CORNER OF SECTION 26, T6N, R66W.
- OPERATOR: PRESTON KNUSTEN / PDOP = 1.2.
- SEE ADDENDUM TO WELL LOCATION CERTIFICATE FOR EXISTING IMPROVEMENTS WITHIN 500' OF THE WELL PAD.
- WELL FOOTAGES ARE MEASURED AT RIGHT ANGLES TO THE SECTION LINES.
- THE BOTTOM OF HOLE BEARS N89°41'37"E, 10300' FROM THE TOP OF PRODUCTION ZONE.
- NO. 1 & NO. 2 AS SHOWN HEREON ARE GOVERNMENT LOTS 1 & 2 PER THE ORIGINAL GLO SURVEY

## **WELL PAD - CHALK-SEELEY FEDERAL 7-26 PAD**

SEELEY FEDERAL 8C-30-L  
 WELL LOCATION CERTIFICATE  
 1913' FNL & 1594' FEL SWNE (SURFACE)  
 LOCATED IN SECTION 26  
 1865' FNL & 150' FWL SWNW (TOP OF PRODUCTION)  
 LOCATED IN SECTION 25  
 T6N, R66W, 6TH P.M.  
 1865' FNL & 150' FEL SENE (BOTTOM)  
 LOCATED IN SECTION 30  
 T6N, R65W, 6TH P.M.  
 WELD COUNTY, COLORADO



**SRC ENERGY**  
 1675 Broadway, Suite 2600  
 Denver, Colorado 80202



## **CONSULTING, LLC**

**SHERIDAN OFFICE**  
 1095 Saberton Avenue  
 Sheridan, Wyoming 82801  
 Phone 307-674-0609

**LOVELAND OFFICE**  
 1635 Foxtrail Drive, Suite 204  
 Loveland, Colorado 80538  
 Phone 970-776-4331

DRAFTED BY:	LMO	CHECKED BY:	JRS	SHEET NO:
DATE DRAFTED:	9/26/17	DATE SURVEYED:	7/7/17	3
REVISED:	2/28/18	FILE NAME:	17-41	3 OF 3