

# SRC ENERGY

Location: COLORADO Slot: SLOT#11 SEELEY FEDERAL 8C-30-L (1913°FNL & 1594°FEL, SEC.26)  
Field: WELD COUNTY (NAD83, TRUE NORTH) Well: SEELEY FEDERAL 8C-30-L  
Facility: SEC.26-T06N-R66W Wellbore: SEELEY FEDERAL 8C-30-L PWB

Plot reference wellpath is SEELEY FEDERAL 8C-30-L (REV-A.0) PWB	Grid System: NAD83 / Lambert Colorado SP, Northern Zone (501), US feet
True vertical depths are referenced to PROPETRO 12 (4') (RKB)	" = Wellpath was transformed from a different geodetic datum
Measured depths are referenced to PROPETRO 12 (4') (RKB)	North Reference: True north
PROPETRO 12 (4') (RKB) to Mean Sea Level: 4701 feet	Scale: True distance
Mean Sea Level to Mud line (At Slot: SLOT#11 SEELEY FEDERAL 8C-30-L (1913°FNL & 1594°FEL, SEC.26)) 0 feet	Depths are in feet
Coordinates are in feet referenced to Slot	Created by: doddanna on 2018-05-10
	Database: WellArchitectDB

## Location Information

Facility Name			Grid East (US Ft)	Grid North (US Ft)	Latitude	Longitude
SEC.26-T06N-R66W			3211306.457	1412009.161	40°27'42.779"N	104°44'26.117"W
Slot	Local N (ft)	Local E (ft)	Grid East (US Ft)	Grid North (US Ft)	Latitude	Longitude
SLOT#11 SEELEY FEDERAL 8C-30-L (1913°FNL & 1594°FEL, SEC.26)	-200.00	-1.64	3211306.531	1411809.112	40°27'45.802"N	104°44'26.138"W
PROPETRO 12 (4') (RKB) to Mud line (At Slot: SLOT#11 SEELEY FEDERAL 8C-30-L (1913°FNL & 1594°FEL, SEC.26))					4701 ft	
Mean Sea Level to Mud line (At Slot: SLOT#11 SEELEY FEDERAL 8C-30-L (1913°FNL & 1594°FEL, SEC.26))					0 ft	
PROPETRO 12 (4') (RKB) to Mean Sea Level					4701 ft	

## Survey Program

Start MD (ft)	End MD (ft)	Tool	Model	Log Name/Comment	Wellbore
4.00	1750.00	BHI NavTrak	BHI NavTrak (Rotating+Axial Corr)		SEELEY FEDERAL 8C-30-L PWB
1750.00	17906.44	BHI AutoTrak Curve	BHI AutoTrak Curve (IFR1, Short)		SEELEY FEDERAL 8C-30-L PWB

## Well Profile Data

Design Comment	MD (ft)	Inc (°)	Az (°)	TVD (ft)	Local N (ft)	Local E (ft)	DLS (°/100ft)	VS (ft)
Tie On	4.00	0.000	84.967	4.00	0.00	0.00	0.00	0.00
End of Tangent	200.00	0.000	84.967	200.00	0.00	0.00	0.00	0.00
End of Build (XS)	715.17	10.303	84.967	712.40	4.05	46.02	2.00	46.02
End of Tangent (XS)	6718.37	10.303	84.967	6618.80	98.26	1115.61	0.00	1115.71
End of 3D Arc (XS)	7605.36	90.083	90.496	7142.00	102.01	1743.04	9.00	1743.15
End of Tangent (XS)	17906.44	90.083	90.496	7127.00	12.82	12043.73	0.00	12043.73

## Targets

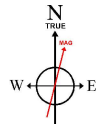
Name	MD (ft)	Inc (°)	Az (°)	TVD (ft)	Local N (ft)	Local E (ft)	DLS (°/100ft)	VS (ft)
SEELEY FEDERAL 8C-30-L (REV-A.0) PWB	4.00	0.000	84.967	4.00	0.00	0.00	0.00	0.00
SEELEY FEDERAL 8C-30-L (REV-A.0) PWB	200.00	0.000	84.967	200.00	0.00	0.00	0.00	0.00
SEELEY FEDERAL 8C-30-L (REV-A.0) PWB	715.17	10.303	84.967	712.40	4.05	46.02	2.00	46.02
SEELEY FEDERAL 8C-30-L (REV-A.0) PWB	6718.37	10.303	84.967	6618.80	98.26	1115.61	0.00	1115.71
SEELEY FEDERAL 8C-30-L (REV-A.0) PWB	7605.36	90.083	90.496	7142.00	102.01	1743.04	9.00	1743.15
SEELEY FEDERAL 8C-30-L (REV-A.0) PWB	17906.44	90.083	90.496	7127.00	12.82	12043.73	0.00	12043.73

## Hole and Casing Sections

Name	Start MD (ft)	End MD (ft)	Interval (ft)	Start TVD (ft)	End TVD (ft)	Start Local N (ft)	End Local N (ft)	Start Local E (ft)	End Local E (ft)	Wellbore
15.5in Open Hole	4.00	1750.00	1746.00	4.00	1750.54	0.00	0.00	20.29	230.39	SEELEY FEDERAL 8C-30-L PWB
9.5in Casing Surface	4.00	1750.00	1746.00	4.00	1750.54	0.00	0.00	20.29	230.39	SEELEY FEDERAL 8C-30-L PWB
8.5in Open Hole	1750.00	17906.44	16156.44	1750.54	7127.00	20.29	230.39	12.82	12043.73	SEELEY FEDERAL 8C-30-L PWB

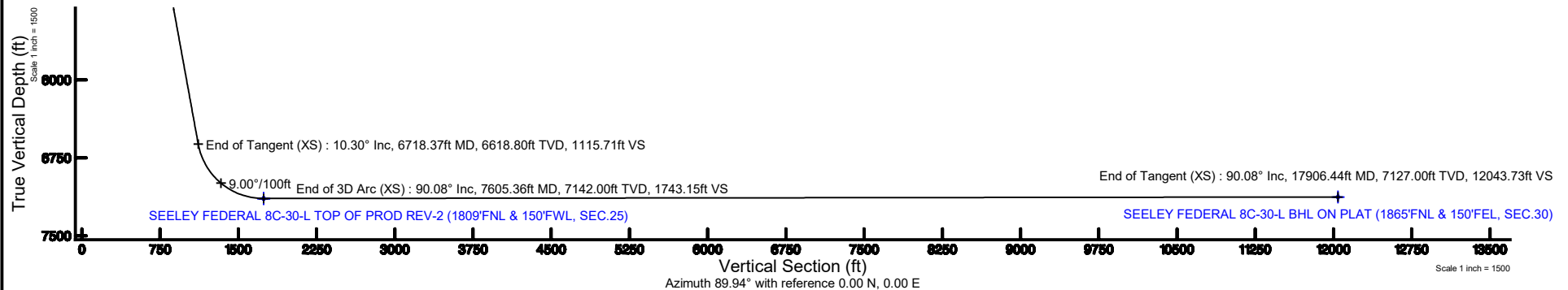
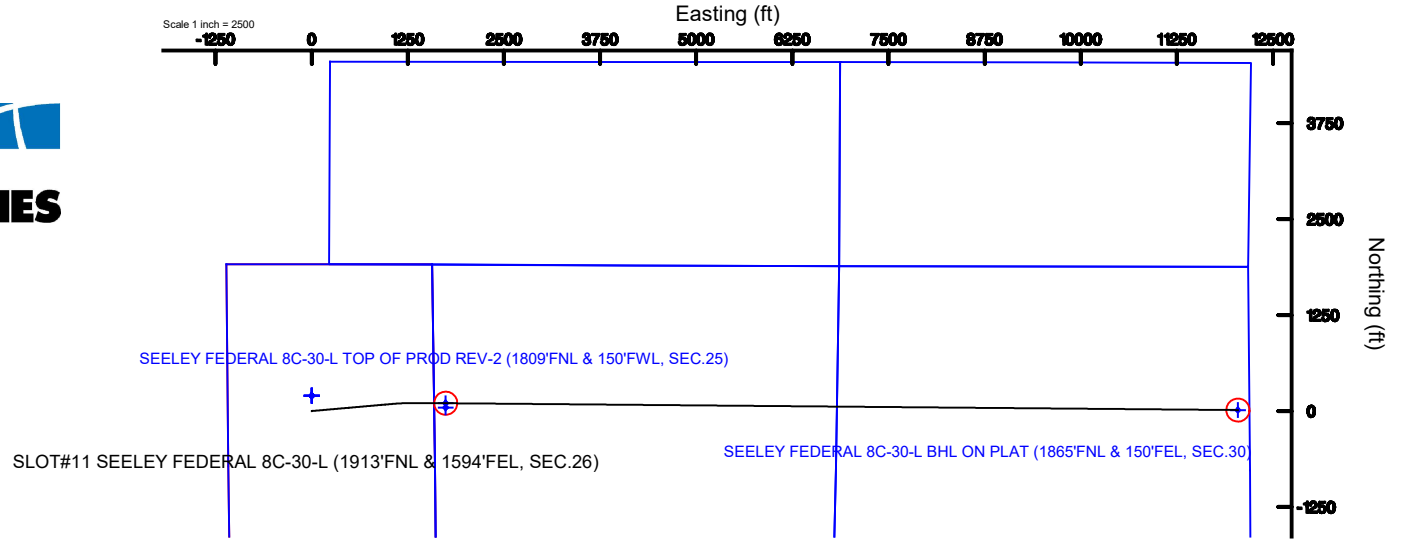


SRC ENERGY



BGGM (1900.0 to 2019.0) Dip: 66.87° Field: 52352.6 nT  
Magnetic North is 8.30 degrees East of True North (at 4/24/2018)

To correct azimuth from Magnetic to True add 8.30 degrees



# SEELEY\_FEDERAL\_8C-30-L\_\_\_REV-A.0\_\_PWP.las

## ~VERSION INFORMATION

VERS. 2.0 : CWLS LOG ASCII STANDARD-VERSION 2.0

WRAP. NO : ASCII DATA SECTION CONTAINS ONE ROW PER WELLPATH STATION

## ~WELL INFORMATION

#MNEM	.UNITS	DATA	:DESCRIPTION
#----	.-----	----	:-----
STRT	.ft	0.00	:START MD
STOP	.ft	17906.44	:STOP MD
STEP	.ft	0.0	:STEP (non-uniform increment)
NULL	.	-999.99	:NULL
COMP	.	SRC ENERGY	:OPERATOR
WELL	.	SEELEY FEDERAL 8C-30-L	:WELL
FLD	.	WELD COUNTY (NAD83,TRUE NORTH)	:FIELD
LOC	.	COLORADO	:AREA (aka: Location)
CNTY	.	N/A	:COUNTY
STAT	.	N/A	:STATE
CTRY	.	N/A	:COUNTRY
SRVC	.	Baker Hughes	:CONTRACTOR
DATE	.	04/25/2018	:LOG REV DATE
API	.		:API NUMBER

## ~OTHER INFORMATION

#Software: WellArchitect(R) Version 5.0

#MNEM	.UNITS	DATA	:DESCRIPTION
#----	.-----	----	:-----
WPTYPE	.	PLANNED WELLPATH	:WELLPATH TYPE
FACILITY	.	SEC.26-T06N-R66W	:FACILITY
SLOT	.	SLOT#11 SEELEY FEDERAL 8C-30-L (1913'FNL & 1594'FEL, SEC.26):SLOT	
WELLBORE	.	SEELEY FEDERAL 8C-30-L PWB	:WELLBORE
WELLPATH	.	SEELEY FEDERAL 8C-30-L (REV-A.0) PWP	:WELLPATH
MDREFPT	.	PROPETRO 12 (4') (RKB)	:MD REFERENCE POINT
TVDREFPT	.	PROPETRO 12 (4') (RKB)	:TVD REFERENCE POINT
LCLREFPT	.	Slot	:LOCAL COORDINATE
REFERENCE PT			
VSAZIMUTH.deg		89.94	:VERTICAL SECTION
AZIMUTH			
VSORIGN	.ft	0.00	:VERTICAL SECTION ORIGIN
NORTH			
VSORIGE	.ft	0.00	:VERTICAL SECTION ORIGIN
EAST			

## ~CURVE (WELLPATH) INFORMATION

#MNEM	.UNITS	:DESCRIPTION
#----	.-----	:-----
DEPT	.ft	:MEASURED DEPTH

SEELEY\_FEDERAL\_8C-30-L\_\_\_\_REV-A.0\_\_PWP.las

INC .deg :INCLINATION  
 AZI .deg :AZIMUTH  
 TVD .ft :TRUE VERTICAL DEPTH  
 SECT .ft :CROSS SECTION (CURTAIN/VERTICAL)  
 LOCALN .ft :LOCAL NORTH  
 LOCALE .ft :LOCAL EAST  
 LAT .deg :LATITUDE  
 LONG .deg :LONGITUDE  
 DLS .deg/100ft :DOGLEG SEVERITY

~ASCII DATA

0.00	0.00	84.97	0.00	0.00	0.00	0.00	0.00	40.4613339
-104.7405939	0.00							
4.00	0.00	84.97	4.00	0.00	0.00	0.00	0.00	40.4613339
-104.7405939	0.00							
104.00	0.00	84.97	104.00	0.00	0.00	0.00	0.00	40.4613339
-104.7405939	0.00							
200.00	0.00	84.97	200.00	0.00	0.00	0.00	0.00	40.4613339
-104.7405939	0.00							
204.00	0.08	84.97	204.00	0.00	0.00	0.00	0.00	40.4613339
-104.7405939	2.00							
304.00	2.08	84.97	303.98	1.88	0.17	1.88		40.4613343
-104.7405871	2.00							
404.00	4.08	84.97	403.83	7.23	0.64	7.23		40.4613356
-104.7405679	2.00							
504.00	6.08	84.97	503.43	16.05	1.41	16.05		40.4613378
-104.7405362	2.00							
604.00	8.08	84.97	602.66	28.33	2.50	28.33		40.4613407
-104.7404921	2.00							
704.00	10.08	84.97	701.40	44.05	3.88	44.05		40.4613445
-104.7404356	2.00							
715.17	10.30	84.97	712.40	46.02	4.05	46.02		40.4613450
-104.7404285	2.00							
804.00	10.30	84.97	799.80	61.85	5.45	61.85		40.4613488
-104.7403716	0.00							
904.00	10.30	84.97	898.18	79.67	7.02	79.66		40.4613531
-104.7403076	0.00							
1004.00	10.30	84.97	996.57	97.49	8.59	97.48		40.4613575
-104.7402436	0.00							
1104.00	10.30	84.97	1094.96	115.31	10.15	115.30		40.4613618
-104.7401796	0.00							
1204.00	10.30	84.97	1193.35	133.13	11.72	133.11		40.4613661
-104.7401155	0.00							
1304.00	10.30	84.97	1291.73	150.94	13.29	150.93		40.4613704
-104.7400515	0.00							
1404.00	10.30	84.97	1390.12	168.76	14.86	168.75		40.4613747
-104.7399875	0.00							
1504.00	10.30	84.97	1488.51	186.58	16.43	186.56		40.4613790

## SEELEY\_FEDERAL\_8C-30-L\_\_\_REV-A.0\_\_PWP.las

-104.7399234	0.00						
1604.00	10.30	84.97	1586.90	204.40	18.00	204.38	40.4613833
-104.7398594	0.00						
1704.00	10.30	84.97	1685.28	222.22	19.57	222.20	40.4613876
-104.7397954	0.00						
1804.00	10.30	84.97	1783.67	240.04	21.14	240.02	40.4613919
-104.7397314	0.00						
1904.00	10.30	84.97	1882.06	257.86	22.71	257.83	40.4613962
-104.7396673	0.00						
2004.00	10.30	84.97	1980.44	275.67	24.28	275.65	40.4614005
-104.7396033	0.00						
2104.00	10.30	84.97	2078.83	293.49	25.85	293.47	40.4614048
-104.7395393	0.00						
2204.00	10.30	84.97	2177.22	311.31	27.42	311.28	40.4614091
-104.7394752	0.00						
2304.00	10.30	84.97	2275.61	329.13	28.99	329.10	40.4614134
-104.7394112	0.00						
2404.00	10.30	84.97	2373.99	346.95	30.56	346.92	40.4614178
-104.7393472	0.00						
2504.00	10.30	84.97	2472.38	364.77	32.12	364.73	40.4614221
-104.7392832	0.00						
2604.00	10.30	84.97	2570.77	382.59	33.69	382.55	40.4614264
-104.7392191	0.00						
2704.00	10.30	84.97	2669.16	400.41	35.26	400.37	40.4614307
-104.7391551	0.00						
2804.00	10.30	84.97	2767.54	418.22	36.83	418.19	40.4614350
-104.7390911	0.00						
2904.00	10.30	84.97	2865.93	436.04	38.40	436.00	40.4614393
-104.7390270	0.00						
3004.00	10.30	84.97	2964.32	453.86	39.97	453.82	40.4614436
-104.7389630	0.00						
3104.00	10.30	84.97	3062.71	471.68	41.54	471.64	40.4614479
-104.7388990	0.00						
3204.00	10.30	84.97	3161.09	489.50	43.11	489.45	40.4614522
-104.7388350	0.00						
3304.00	10.30	84.97	3259.48	507.32	44.68	507.27	40.4614565
-104.7387709	0.00						
3404.00	10.30	84.97	3357.87	525.14	46.25	525.09	40.4614608
-104.7387069	0.00						
3504.00	10.30	84.97	3456.26	542.96	47.82	542.90	40.4614651
-104.7386429	0.00						
3604.00	10.30	84.97	3554.64	560.77	49.39	560.72	40.4614694
-104.7385789	0.00						
3704.00	10.30	84.97	3653.03	578.59	50.96	578.54	40.4614737
-104.7385148	0.00						
3804.00	10.30	84.97	3751.42	596.41	52.53	596.36	40.4614780
-104.7384508	0.00						
3904.00	10.30	84.97	3849.81	614.23	54.09	614.17	40.4614824

## SEELEY\_FEDERAL\_8C-30-L\_\_\_REV-A.0\_\_PWP.las

-104.7383868	0.00						
4004.00	10.30	84.97	3948.19	632.05	55.66	631.99	40.4614867
-104.7383227	0.00						
4104.00	10.30	84.97	4046.58	649.87	57.23	649.81	40.4614910
-104.7382587	0.00						
4204.00	10.30	84.97	4144.97	667.69	58.80	667.62	40.4614953
-104.7381947	0.00						
4304.00	10.30	84.97	4243.36	685.50	60.37	685.44	40.4614996
-104.7381307	0.00						
4404.00	10.30	84.97	4341.74	703.32	61.94	703.26	40.4615039
-104.7380666	0.00						
4504.00	10.30	84.97	4440.13	721.14	63.51	721.07	40.4615082
-104.7380026	0.00						
4604.00	10.30	84.97	4538.52	738.96	65.08	738.89	40.4615125
-104.7379386	0.00						
4704.00	10.30	84.97	4636.91	756.78	66.65	756.71	40.4615168
-104.7378745	0.00						
4804.00	10.30	84.97	4735.29	774.60	68.22	774.53	40.4615211
-104.7378105	0.00						
4904.00	10.30	84.97	4833.68	792.42	69.79	792.34	40.4615254
-104.7377465	0.00						
5004.00	10.30	84.97	4932.07	810.24	71.36	810.16	40.4615297
-104.7376825	0.00						
5104.00	10.30	84.97	5030.46	828.05	72.93	827.98	40.4615340
-104.7376184	0.00						
5204.00	10.30	84.97	5128.84	845.87	74.50	845.79	40.4615383
-104.7375544	0.00						
5304.00	10.30	84.97	5227.23	863.69	76.06	863.61	40.4615426
-104.7374904	0.00						
5404.00	10.30	84.97	5325.62	881.51	77.63	881.43	40.4615469
-104.7374263	0.00						
5504.00	10.30	84.97	5424.01	899.33	79.20	899.24	40.4615512
-104.7373623	0.00						
5604.00	10.30	84.97	5522.39	917.15	80.77	917.06	40.4615556
-104.7372983	0.00						
5704.00	10.30	84.97	5620.78	934.97	82.34	934.88	40.4615599
-104.7372343	0.00						
5804.00	10.30	84.97	5719.17	952.78	83.91	952.70	40.4615642
-104.7371702	0.00						
5904.00	10.30	84.97	5817.56	970.60	85.48	970.51	40.4615685
-104.7371062	0.00						
6004.00	10.30	84.97	5915.94	988.42	87.05	988.33	40.4615728
-104.7370422	0.00						
6104.00	10.30	84.97	6014.33	1006.24	88.62	1006.15	40.4615771
-104.7369781	0.00						
6204.00	10.30	84.97	6112.72	1024.06	90.19	1023.96	40.4615814
-104.7369141	0.00						
6304.00	10.30	84.97	6211.11	1041.88	91.76	1041.78	40.4615857

## SEELEY\_FEDERAL\_8C-30-L\_\_\_REV-A.0\_\_PWP.las

-104.7368501	0.00						
6404.00	10.30	84.97	6309.49	1059.70	93.33	1059.60	40.4615900
-104.7367861	0.00						
6504.00	10.30	84.97	6407.88	1077.52	94.90	1077.42	40.4615943
-104.7367220	0.00						
6604.00	10.30	84.97	6506.27	1095.33	96.46	1095.23	40.4615986
-104.7366580	0.00						
6704.00	10.30	84.97	6604.66	1113.15	98.03	1113.05	40.4616029
-104.7365940	0.00						
6718.37	10.30	84.97	6618.80	1115.71	98.26	1115.61	40.4616035
-104.7365848	0.00						
6804.00	17.99	87.40	6701.77	1136.58	99.53	1136.48	40.4616070
-104.7365098	9.00						
6904.00	26.98	88.52	6794.07	1174.76	100.82	1174.66	40.4616105
-104.7363726	9.00						
7004.00	35.97	89.11	6879.27	1226.91	101.86	1226.81	40.4616134
-104.7361852	9.00						
7104.00	44.97	89.49	6955.26	1291.75	102.63	1291.64	40.4616155
-104.7359522	9.00						
7204.00	53.97	89.77	7020.18	1367.68	103.11	1367.57	40.4616168
-104.7356793	9.00						
7304.00	62.97	89.98	7072.43	1452.82	103.29	1452.71	40.4616173
-104.7353733	9.00						
7404.00	71.96	90.17	7110.71	1545.09	103.17	1544.98	40.4616169
-104.7350417	9.00						
7504.00	80.96	90.34	7134.10	1642.21	102.74	1642.10	40.4616157
-104.7346927	9.00						
7604.00	89.96	90.49	7142.00	1741.79	102.02	1741.69	40.4616137
-104.7343349	9.00						
7605.36	90.08	90.50	7142.00	1743.15	102.01	1743.04	40.4616137
-104.7343300	9.00						
7704.00	90.08	90.50	7141.86	1841.79	101.15	1841.68	40.4616113
-104.7339755	0.00						
7804.00	90.08	90.50	7141.71	1941.78	100.29	1941.68	40.4616090
-104.7336162	0.00						
7904.00	90.08	90.50	7141.57	2041.78	99.42	2041.67	40.4616066
-104.7332568	0.00						
8004.00	90.08	90.50	7141.42	2141.77	98.55	2141.67	40.4616042
-104.7328975	0.00						
8104.00	90.08	90.50	7141.27	2241.77	97.69	2241.67	40.4616018
-104.7325381	0.00						
8204.00	90.08	90.50	7141.13	2341.76	96.82	2341.66	40.4615993
-104.7321788	0.00						
8304.00	90.08	90.50	7140.98	2441.76	95.96	2441.66	40.4615969
-104.7318194	0.00						
8404.00	90.08	90.50	7140.84	2541.75	95.09	2541.65	40.4615945
-104.7314601	0.00						
8504.00	90.08	90.50	7140.69	2641.75	94.23	2641.65	40.4615921

## SEELEY\_FEDERAL\_8C-30-L\_\_\_REV-A.0\_\_PWP.las

-104.7311007	0.00						
8604.00	90.08	90.50	7140.55	2741.74	93.36	2741.65	40.4615897
-104.7307413	0.00						
8704.00	90.08	90.50	7140.40	2841.74	92.49	2841.64	40.4615873
-104.7303820	0.00						
8804.00	90.08	90.50	7140.25	2941.74	91.63	2941.64	40.4615849
-104.7300226	0.00						
8904.00	90.08	90.50	7140.11	3041.73	90.76	3041.64	40.4615825
-104.7296633	0.00						
9004.00	90.08	90.50	7139.96	3141.73	89.90	3141.63	40.4615801
-104.7293039	0.00						
9104.00	90.08	90.50	7139.82	3241.72	89.03	3241.63	40.4615777
-104.7289446	0.00						
9204.00	90.08	90.50	7139.67	3341.72	88.16	3341.62	40.4615753
-104.7285852	0.00						
9304.00	90.08	90.50	7139.53	3441.71	87.30	3441.62	40.4615729
-104.7282259	0.00						
9404.00	90.08	90.50	7139.38	3541.71	86.43	3541.62	40.4615704
-104.7278665	0.00						
9504.00	90.08	90.50	7139.24	3641.70	85.57	3641.61	40.4615680
-104.7275072	0.00						
9604.00	90.08	90.50	7139.09	3741.70	84.70	3741.61	40.4615656
-104.7271478	0.00						
9704.00	90.08	90.50	7138.94	3841.69	83.84	3841.60	40.4615632
-104.7267885	0.00						
9804.00	90.08	90.50	7138.80	3941.69	82.97	3941.60	40.4615608
-104.7264291	0.00						
9904.00	90.08	90.50	7138.65	4041.68	82.10	4041.60	40.4615583
-104.7260698	0.00						
10004.00	90.08	90.50	7138.51	4141.68	81.24	4141.59	40.4615559
-104.7257104	0.00						
10104.00	90.08	90.50	7138.36	4241.67	80.37	4241.59	40.4615535
-104.7253511	0.00						
10204.00	90.08	90.50	7138.22	4341.67	79.51	4341.59	40.4615511
-104.7249917	0.00						
10304.00	90.08	90.50	7138.07	4441.66	78.64	4441.58	40.4615486
-104.7246324	0.00						
10404.00	90.08	90.50	7137.92	4541.66	77.77	4541.58	40.4615462
-104.7242730	0.00						
10504.00	90.08	90.50	7137.78	4641.65	76.91	4641.57	40.4615438
-104.7239137	0.00						
10604.00	90.08	90.50	7137.63	4741.65	76.04	4741.57	40.4615414
-104.7235543	0.00						
10704.00	90.08	90.50	7137.49	4841.64	75.18	4841.57	40.4615389
-104.7231950	0.00						
10804.00	90.08	90.50	7137.34	4941.64	74.31	4941.56	40.4615365
-104.7228356	0.00						
10904.00	90.08	90.50	7137.20	5041.63	73.45	5041.56	40.4615341

## SEELEY\_FEDERAL\_8C-30-L\_\_\_REV-A.0\_\_PWP.las

-104.7224763	0.00						
11004.00	90.08	90.50	7137.05	5141.63	72.58	5141.55	40.4615316
-104.7221169	0.00						
11104.00	90.08	90.50	7136.91	5241.62	71.71	5241.55	40.4615292
-104.7217576	0.00						
11204.00	90.08	90.50	7136.76	5341.62	70.85	5341.55	40.4615268
-104.7213982	0.00						
11304.00	90.08	90.50	7136.61	5441.61	69.98	5441.54	40.4615243
-104.7210389	0.00						
11404.00	90.08	90.50	7136.47	5541.61	69.12	5541.54	40.4615219
-104.7206795	0.00						
11504.00	90.08	90.50	7136.32	5641.60	68.25	5641.54	40.4615195
-104.7203202	0.00						
11604.00	90.08	90.50	7136.18	5741.60	67.38	5741.53	40.4615170
-104.7199608	0.00						
11704.00	90.08	90.50	7136.03	5841.60	66.52	5841.53	40.4615146
-104.7196015	0.00						
11804.00	90.08	90.50	7135.89	5941.59	65.65	5941.52	40.4615121
-104.7192421	0.00						
11904.00	90.08	90.50	7135.74	6041.59	64.79	6041.52	40.4615097
-104.7188828	0.00						
12004.00	90.08	90.50	7135.59	6141.58	63.92	6141.52	40.4615072
-104.7185234	0.00						
12104.00	90.08	90.50	7135.45	6241.58	63.06	6241.51	40.4615048
-104.7181641	0.00						
12204.00	90.08	90.50	7135.30	6341.57	62.19	6341.51	40.4615024
-104.7178047	0.00						
12304.00	90.08	90.50	7135.16	6441.57	61.32	6441.50	40.4614999
-104.7174454	0.00						
12404.00	90.08	90.50	7135.01	6541.56	60.46	6541.50	40.4614975
-104.7170860	0.00						
12504.00	90.08	90.50	7134.87	6641.56	59.59	6641.50	40.4614950
-104.7167267	0.00						
12604.00	90.08	90.50	7134.72	6741.55	58.73	6741.49	40.4614926
-104.7163673	0.00						
12704.00	90.08	90.50	7134.58	6841.55	57.86	6841.49	40.4614901
-104.7160080	0.00						
12804.00	90.08	90.50	7134.43	6941.54	56.99	6941.49	40.4614877
-104.7156486	0.00						
12904.00	90.08	90.50	7134.28	7041.54	56.13	7041.48	40.4614852
-104.7152893	0.00						
13004.00	90.08	90.50	7134.14	7141.53	55.26	7141.48	40.4614827
-104.7149299	0.00						
13104.00	90.08	90.50	7133.99	7241.53	54.40	7241.47	40.4614803
-104.7145706	0.00						
13204.00	90.08	90.50	7133.85	7341.52	53.53	7341.47	40.4614778
-104.7142112	0.00						
13304.00	90.08	90.50	7133.70	7441.52	52.67	7441.47	40.4614754



## SEELEY\_FEDERAL\_8C-30-L\_\_\_REV-A.0\_\_PWP.las

-104.7138519	0.00						
13404.00	90.08	90.50	7133.56	7541.51	51.80	7541.46	40.4614729
-104.7134925	0.00						
13504.00	90.08	90.50	7133.41	7641.51	50.93	7641.46	40.4614704
-104.7131332	0.00						
13604.00	90.08	90.50	7133.27	7741.50	50.07	7741.45	40.4614680
-104.7127738	0.00						
13704.00	90.08	90.50	7133.12	7841.50	49.20	7841.45	40.4614655
-104.7124145	0.00						
13804.00	90.08	90.50	7132.97	7941.49	48.34	7941.45	40.4614631
-104.7120551	0.00						
13904.00	90.08	90.50	7132.83	8041.49	47.47	8041.44	40.4614606
-104.7116958	0.00						
14004.00	90.08	90.50	7132.68	8141.48	46.60	8141.44	40.4614581
-104.7113364	0.00						
14104.00	90.08	90.50	7132.54	8241.48	45.74	8241.44	40.4614557
-104.7109771	0.00						
14204.00	90.08	90.50	7132.39	8341.47	44.87	8341.43	40.4614532
-104.7106177	0.00						
14304.00	90.08	90.50	7132.25	8441.47	44.01	8441.43	40.4614507
-104.7102584	0.00						
14404.00	90.08	90.50	7132.10	8541.46	43.14	8541.42	40.4614482
-104.7098990	0.00						
14504.00	90.08	90.50	7131.95	8641.46	42.28	8641.42	40.4614458
-104.7095397	0.00						
14604.00	90.08	90.50	7131.81	8741.45	41.41	8741.42	40.4614433
-104.7091803	0.00						
14704.00	90.08	90.50	7131.66	8841.45	40.54	8841.41	40.4614408
-104.7088210	0.00						
14804.00	90.08	90.50	7131.52	8941.45	39.68	8941.41	40.4614384
-104.7084616	0.00						
14904.00	90.08	90.50	7131.37	9041.44	38.81	9041.40	40.4614359
-104.7081023	0.00						
15004.00	90.08	90.50	7131.23	9141.44	37.95	9141.40	40.4614334
-104.7077429	0.00						
15104.00	90.08	90.50	7131.08	9241.43	37.08	9241.40	40.4614309
-104.7073836	0.00						
15204.00	90.08	90.50	7130.94	9341.43	36.21	9341.39	40.4614284
-104.7070242	0.00						
15304.00	90.08	90.50	7130.79	9441.42	35.35	9441.39	40.4614260
-104.7066649	0.00						
15404.00	90.08	90.50	7130.64	9541.42	34.48	9541.38	40.4614235
-104.7063055	0.00						
15504.00	90.08	90.50	7130.50	9641.41	33.62	9641.38	40.4614210
-104.7059462	0.00						
15604.00	90.08	90.50	7130.35	9741.41	32.75	9741.38	40.4614185
-104.7055868	0.00						
15704.00	90.08	90.50	7130.21	9841.40	31.89	9841.37	40.4614160

## SEELEY\_FEDERAL\_8C-30-L\_\_\_REV-A.0\_\_PWP.las

-104.7052275	0.00						
15804.00	90.08	90.50	7130.06	9941.40	31.02	9941.37	40.4614135
-104.7048681	0.00						
15904.00	90.08	90.50	7129.92	10041.39	30.15	10041.37	40.4614110
-104.7045088	0.00						
16004.00	90.08	90.50	7129.77	10141.39	29.29	10141.36	40.4614086
-104.7041494	0.00						
16104.00	90.08	90.50	7129.62	10241.38	28.42	10241.36	40.4614061
-104.7037901	0.00						
16204.00	90.08	90.50	7129.48	10341.38	27.56	10341.35	40.4614036
-104.7034307	0.00						
16304.00	90.08	90.50	7129.33	10441.37	26.69	10441.35	40.4614011
-104.7030714	0.00						
16404.00	90.08	90.50	7129.19	10541.37	25.82	10541.35	40.4613986
-104.7027120	0.00						
16504.00	90.08	90.50	7129.04	10641.36	24.96	10641.34	40.4613961
-104.7023527	0.00						
16604.00	90.08	90.50	7128.90	10741.36	24.09	10741.34	40.4613936
-104.7019933	0.00						
16704.00	90.08	90.50	7128.75	10841.35	23.23	10841.33	40.4613911
-104.7016340	0.00						
16804.00	90.08	90.50	7128.61	10941.35	22.36	10941.33	40.4613886
-104.7012746	0.00						
16904.00	90.08	90.50	7128.46	11041.34	21.50	11041.33	40.4613861
-104.7009153	0.00						
17004.00	90.08	90.50	7128.31	11141.34	20.63	11141.32	40.4613836
-104.7005559	0.00						
17104.00	90.08	90.50	7128.17	11241.33	19.76	11241.32	40.4613811
-104.7001966	0.00						
17204.00	90.08	90.50	7128.02	11341.33	18.90	11341.32	40.4613786
-104.6998372	0.00						
17304.00	90.08	90.50	7127.88	11441.32	18.03	11441.31	40.4613761
-104.6994779	0.00						
17404.00	90.08	90.50	7127.73	11541.32	17.17	11541.31	40.4613736
-104.6991185	0.00						
17504.00	90.08	90.50	7127.59	11641.31	16.30	11641.30	40.4613711
-104.6987592	0.00						
17604.00	90.08	90.50	7127.44	11741.31	15.43	11741.30	40.4613686
-104.6983998	0.00						
17704.00	90.08	90.50	7127.29	11841.31	14.57	11841.30	40.4613661
-104.6980405	0.00						
17804.00	90.08	90.50	7127.15	11941.30	13.70	11941.29	40.4613636
-104.6976811	0.00						
17904.00	90.08	90.50	7127.00	12041.30	12.84	12041.29	40.4613611
-104.6973218	0.00						
17906.44	90.08	90.50	7127.00	12043.73	12.82	12043.73	40.4613610
-104.6973130	0.00						



SRC ENERGY

# Planned Wellpath Report

SEELEY FEDERAL 8C-30-L (REV-A.0) PWP

Page 1 of 10



## REFERENCE WELLPATH IDENTIFICATION

Operator	SRC ENERGY	Slot	SLOT#11 SEELEY FEDERAL 8C-30-L (1913'FNL & 1594'FEL, SEC.26)
Area	COLORADO	Well	SEELEY FEDERAL 8C-30-L
Field	WELD COUNTY (NAD83, TRUE NORTH)	Wellbore	SEELEY FEDERAL 8C-30-L PWB
Facility	SEC.26-T06N-R66W		

## REPORT SETUP INFORMATION

Projection System	NAD83 / Lambert Colorado SP, Northern Zone (501), US feet	Software System	WellArchitect® 5.0
North Reference	True	User	Doddanna
Scale	0.999964	Report Generated	5/10/2018 at 4:17:05 PM
Convergence at slot	0.49° East	Database/Source file	WellArchitectDB/SEELEY_FEDERAL_8C-30-L__REV-A.0__PWP.xml

## WELLPATH LOCATION

	Local coordinates		Grid coordinates		Geographic coordinates	
	North[ft]	East[ft]	Easting[US ft]	Northing[US ft]	Latitude	Longitude
Slot Location	-200.05	-1.64	3211308.53	1411809.11	40°27'40.802"N	104°44'26.138"W
Facility Reference Pt			3211308.46	1412009.16	40°27'42.779"N	104°44'26.117"W
Field Reference Pt			3171284.48	1426358.81	40°30'07.643"N	104°53'02.634"W

## WELLPATH DATUM

Calculation method	Minimum curvature	PROPETRO 12 (4') (RKB) to Facility Vertical Datum	4701.00ft
Horizontal Reference Pt	Slot	PROPETRO 12 (4') (RKB) to Mean Sea Level	4701.00ft
Vertical Reference Pt	PROPETRO 12 (4') (RKB)	PROPETRO 12 (4') (RKB) to Mud Line at Slot (SLOT#11 SEELEY FEDERAL 8C-30-L (1913'FNL & 1594'FEL, SEC.26))	4701.00ft
MD Reference Pt	PROPETRO 12 (4') (RKB)	Section Origin	N 0.00, E 0.00 ft
Field Vertical Reference	Mean Sea Level	Section Azimuth	89.94°



SRC ENERGY

# Planned Wellpath Report

## SEELEY FEDERAL 8C-30-L (REV-A.0) PWP

Page 2 of 10

**REFERENCE WELLPATH IDENTIFICATION**

Operator	SRC ENERGY	Slot	SLOT#11 SEELEY FEDERAL 8C-30-L (1913'FNL & 1594'FEL, SEC.26)
Area	COLORADO	Well	SEELEY FEDERAL 8C-30-L
Field	WELD COUNTY (NAD83, TRUE NORTH)	Wellbore	SEELEY FEDERAL 8C-30-L PWB
Facility	SEC.26-T06N-R66W		

**WELLPATH DATA (186 stations)** † = interpolated/extrapolated station

MD [ft]	Inclination [°]	Azimuth [°]	TVD [ft]	Vert Sect [ft]	North [ft]	East [ft]	DLS [°/100ft]	Comments
0.00†	0.000	84.967	0.00	0.00	0.00	0.00	0.00	
4.00	0.000	84.967	4.00	0.00	0.00	0.00	0.00	Tie On
104.00†	0.000	84.967	104.00	0.00	0.00	0.00	0.00	
200.00	0.000	84.967	200.00	0.00	0.00	0.00	0.00	End of Tangent
204.00†	0.080	84.967	204.00	0.00	0.00	0.00	2.00	
304.00†	2.080	84.967	303.98	1.88	0.17	1.88	2.00	
404.00†	4.080	84.967	403.83	7.23	0.64	7.23	2.00	
504.00†	6.080	84.967	503.43	16.05	1.41	16.05	2.00	
604.00†	8.080	84.967	602.66	28.33	2.50	28.33	2.00	
704.00†	10.080	84.967	701.40	44.05	3.88	44.05	2.00	
715.17	10.303	84.967	712.40	46.02	4.05	46.02	2.00	End of Build (XS)
804.00†	10.303	84.967	799.80	61.85	5.45	61.85	0.00	
904.00†	10.303	84.967	898.18	79.67	7.02	79.66	0.00	
1004.00†	10.303	84.967	996.57	97.49	8.59	97.48	0.00	
1104.00†	10.303	84.967	1094.96	115.31	10.15	115.30	0.00	
1204.00†	10.303	84.967	1193.35	133.13	11.72	133.11	0.00	
1304.00†	10.303	84.967	1291.73	150.94	13.29	150.93	0.00	
1404.00†	10.303	84.967	1390.12	168.76	14.86	168.75	0.00	
1504.00†	10.303	84.967	1488.51	186.58	16.43	186.56	0.00	
1604.00†	10.303	84.967	1586.90	204.40	18.00	204.38	0.00	
1704.00†	10.303	84.967	1685.28	222.22	19.57	222.20	0.00	
1804.00†	10.303	84.967	1783.67	240.04	21.14	240.02	0.00	
1904.00†	10.303	84.967	1882.06	257.86	22.71	257.83	0.00	
2004.00†	10.303	84.967	1980.44	275.67	24.28	275.65	0.00	
2104.00†	10.303	84.967	2078.83	293.49	25.85	293.47	0.00	
2204.00†	10.303	84.967	2177.22	311.31	27.42	311.28	0.00	
2304.00†	10.303	84.967	2275.61	329.13	28.99	329.10	0.00	
2404.00†	10.303	84.967	2373.99	346.95	30.56	346.92	0.00	
2504.00†	10.303	84.967	2472.38	364.77	32.12	364.73	0.00	
2604.00†	10.303	84.967	2570.77	382.59	33.69	382.55	0.00	



SRC ENERGY

# Planned Wellpath Report

SEELEY FEDERAL 8C-30-L (REV-A.0) PWP

Page 3 of 10

**REFERENCE WELLPATH IDENTIFICATION**

Operator	SRC ENERGY	Slot	SLOT#11 SEELEY FEDERAL 8C-30-L (1913'FNL & 1594'FEL, SEC.26)
Area	COLORADO	Well	SEELEY FEDERAL 8C-30-L
Field	WELD COUNTY (NAD83, TRUE NORTH)	Wellbore	SEELEY FEDERAL 8C-30-L PWB
Facility	SEC.26-T06N-R66W		

**WELLPATH DATA (186 stations)** † = interpolated/extrapolated station

MD [ft]	Inclination [°]	Azimuth [°]	TVD [ft]	Vert Sect [ft]	North [ft]	East [ft]	DLS [°/100ft]	Comments
2704.00†	10.303	84.967	2669.16	400.41	35.26	400.37	0.00	
2804.00†	10.303	84.967	2767.54	418.22	36.83	418.19	0.00	
2904.00†	10.303	84.967	2865.93	436.04	38.40	436.00	0.00	
3004.00†	10.303	84.967	2964.32	453.86	39.97	453.82	0.00	
3104.00†	10.303	84.967	3062.71	471.68	41.54	471.64	0.00	
3204.00†	10.303	84.967	3161.09	489.50	43.11	489.45	0.00	
3304.00†	10.303	84.967	3259.48	507.32	44.68	507.27	0.00	
3404.00†	10.303	84.967	3357.87	525.14	46.25	525.09	0.00	
3504.00†	10.303	84.967	3456.26	542.96	47.82	542.90	0.00	
3604.00†	10.303	84.967	3554.64	560.77	49.39	560.72	0.00	
3704.00†	10.303	84.967	3653.03	578.59	50.96	578.54	0.00	
3804.00†	10.303	84.967	3751.42	596.41	52.53	596.36	0.00	
3904.00†	10.303	84.967	3849.81	614.23	54.09	614.17	0.00	
4004.00†	10.303	84.967	3948.19	632.05	55.66	631.99	0.00	
4104.00†	10.303	84.967	4046.58	649.87	57.23	649.81	0.00	
4204.00†	10.303	84.967	4144.97	667.69	58.80	667.62	0.00	
4304.00†	10.303	84.967	4243.36	685.50	60.37	685.44	0.00	
4404.00†	10.303	84.967	4341.74	703.32	61.94	703.26	0.00	
4504.00†	10.303	84.967	4440.13	721.14	63.51	721.07	0.00	
4604.00†	10.303	84.967	4538.52	738.96	65.08	738.89	0.00	
4704.00†	10.303	84.967	4636.91	756.78	66.65	756.71	0.00	
4804.00†	10.303	84.967	4735.29	774.60	68.22	774.53	0.00	
4904.00†	10.303	84.967	4833.68	792.42	69.79	792.34	0.00	
5004.00†	10.303	84.967	4932.07	810.24	71.36	810.16	0.00	
5104.00†	10.303	84.967	5030.46	828.05	72.93	827.98	0.00	
5204.00†	10.303	84.967	5128.84	845.87	74.50	845.79	0.00	
5304.00†	10.303	84.967	5227.23	863.69	76.06	863.61	0.00	
5404.00†	10.303	84.967	5325.62	881.51	77.63	881.43	0.00	
5504.00†	10.303	84.967	5424.01	899.33	79.20	899.24	0.00	
5604.00†	10.303	84.967	5522.39	917.15	80.77	917.06	0.00	



# Planned Wellpath Report

SEELEY FEDERAL 8C-30-L (REV-A.0) PWP

Page 4 of 10



REFERENCE WELLPATH IDENTIFICATION			
Operator	SRC ENERGY	Slot	SLOT#11 SEELEY FEDERAL 8C-30-L (1913'FNL & 1594'FEL, SEC.26)
Area	COLORADO	Well	SEELEY FEDERAL 8C-30-L
Field	WELD COUNTY (NAD83,TRUE NORTH)	Wellbore	SEELEY FEDERAL 8C-30-L PWB
Facility	SEC.26-T06N-R66W		

WELLPATH DATA (186 stations) † = interpolated/extrapolated station								
MD [ft]	Inclination [°]	Azimuth [°]	TVD [ft]	Vert Sect [ft]	North [ft]	East [ft]	DLS [°/100ft]	Comments
5704.00†	10.303	84.967	5620.78	934.97	82.34	934.88	0.00	
5804.00†	10.303	84.967	5719.17	952.78	83.91	952.70	0.00	
5904.00†	10.303	84.967	5817.56	970.60	85.48	970.51	0.00	
6004.00†	10.303	84.967	5915.94	988.42	87.05	988.33	0.00	
6104.00†	10.303	84.967	6014.33	1006.24	88.62	1006.15	0.00	
6204.00†	10.303	84.967	6112.72	1024.06	90.19	1023.96	0.00	
6304.00†	10.303	84.967	6211.11	1041.88	91.76	1041.78	0.00	
6404.00†	10.303	84.967	6309.49	1059.70	93.33	1059.60	0.00	
6504.00†	10.303	84.967	6407.88	1077.52	94.90	1077.42	0.00	
6604.00†	10.303	84.967	6506.27	1095.33	96.46	1095.23	0.00	
6704.00†	10.303	84.967	6604.66	1113.15	98.03	1113.05	0.00	
6718.37	10.303	84.967	6618.80	1115.71	98.26	1115.61	0.00	End of Tangent (XS)
6804.00†	17.988	87.403	6701.77	1136.58	99.53	1136.48	9.00	
6904.00†	26.979	88.523	6794.07	1174.76	100.82	1174.66	9.00	
7004.00†	35.973	89.112	6879.27	1226.91	101.86	1226.81	9.00	
7104.00†	44.970	89.490	6955.26	1291.75	102.63	1291.64	9.00	
7204.00†	53.968	89.765	7020.18	1367.68	103.11	1367.57	9.00	
7304.00†	62.966	89.983	7072.43	1452.82	103.29	1452.71	9.00	
7404.00†	71.964	90.168	7110.71	1545.09	103.17	1544.98	9.00	
7504.00†	80.963	90.335	7134.10	1642.21	102.74	1642.10	9.00	
7604.00†	89.961	90.494	7142.00	1741.79	102.02	1741.69	9.00	
7605.36	90.083	90.496	7142.00†	1743.15	102.01	1743.04	9.00	End of 3D Arc (XS)
7704.00†	90.083	90.496	7141.86	1841.79	101.15	1841.68	0.00	
7804.00†	90.083	90.496	7141.71	1941.78	100.29	1941.68	0.00	
7904.00†	90.083	90.496	7141.57	2041.78	99.42	2041.67	0.00	
8004.00†	90.083	90.496	7141.42	2141.77	98.55	2141.67	0.00	
8104.00†	90.083	90.496	7141.27	2241.77	97.69	2241.67	0.00	
8204.00†	90.083	90.496	7141.13	2341.76	96.82	2341.66	0.00	
8304.00†	90.083	90.496	7140.98	2441.76	95.96	2441.66	0.00	
8404.00†	90.083	90.496	7140.84	2541.75	95.09	2541.65	0.00	



# Planned Wellpath Report

## SEELEY FEDERAL 8C-30-L (REV-A.0) PWP

Page 5 of 10



REFERENCE WELLPATH IDENTIFICATION			
Operator	SRC ENERGY	Slot	SLOT#11 SEELEY FEDERAL 8C-30-L (1913'FNL & 1594'FEL, SEC.26)
Area	COLORADO	Well	SEELEY FEDERAL 8C-30-L
Field	WELD COUNTY (NAD83,TRUE NORTH)	Wellbore	SEELEY FEDERAL 8C-30-L PWB
Facility	SEC.26-T06N-R66W		

WELLPATH DATA (186 stations) † = interpolated/extrapolated station								
MD [ft]	Inclination [°]	Azimuth [°]	TVD [ft]	Vert Sect [ft]	North [ft]	East [ft]	DLS [°/100ft]	Comments
8504.00†	90.083	90.496	7140.69	2641.75	94.23	2641.65	0.00	
8604.00†	90.083	90.496	7140.55	2741.74	93.36	2741.65	0.00	
8704.00†	90.083	90.496	7140.40	2841.74	92.49	2841.64	0.00	
8804.00†	90.083	90.496	7140.25	2941.74	91.63	2941.64	0.00	
8904.00†	90.083	90.496	7140.11	3041.73	90.76	3041.64	0.00	
9004.00†	90.083	90.496	7139.96	3141.73	89.90	3141.63	0.00	
9104.00†	90.083	90.496	7139.82	3241.72	89.03	3241.63	0.00	
9204.00†	90.083	90.496	7139.67	3341.72	88.16	3341.62	0.00	
9304.00†	90.083	90.496	7139.53	3441.71	87.30	3441.62	0.00	
9404.00†	90.083	90.496	7139.38	3541.71	86.43	3541.62	0.00	
9504.00†	90.083	90.496	7139.24	3641.70	85.57	3641.61	0.00	
9604.00†	90.083	90.496	7139.09	3741.70	84.70	3741.61	0.00	
9704.00†	90.083	90.496	7138.94	3841.69	83.84	3841.60	0.00	
9804.00†	90.083	90.496	7138.80	3941.69	82.97	3941.60	0.00	
9904.00†	90.083	90.496	7138.65	4041.68	82.10	4041.60	0.00	
10004.00†	90.083	90.496	7138.51	4141.68	81.24	4141.59	0.00	
10104.00†	90.083	90.496	7138.36	4241.67	80.37	4241.59	0.00	
10204.00†	90.083	90.496	7138.22	4341.67	79.51	4341.59	0.00	
10304.00†	90.083	90.496	7138.07	4441.66	78.64	4441.58	0.00	
10404.00†	90.083	90.496	7137.92	4541.66	77.77	4541.58	0.00	
10504.00†	90.083	90.496	7137.78	4641.65	76.91	4641.57	0.00	
10604.00†	90.083	90.496	7137.63	4741.65	76.04	4741.57	0.00	
10704.00†	90.083	90.496	7137.49	4841.64	75.18	4841.57	0.00	
10804.00†	90.083	90.496	7137.34	4941.64	74.31	4941.56	0.00	
10904.00†	90.083	90.496	7137.20	5041.63	73.45	5041.56	0.00	
11004.00†	90.083	90.496	7137.05	5141.63	72.58	5141.55	0.00	
11104.00†	90.083	90.496	7136.91	5241.62	71.71	5241.55	0.00	
11204.00†	90.083	90.496	7136.76	5341.62	70.85	5341.55	0.00	
11304.00†	90.083	90.496	7136.61	5441.61	69.98	5441.54	0.00	
11404.00†	90.083	90.496	7136.47	5541.61	69.12	5541.54	0.00	



# Planned Wellpath Report

SEELEY FEDERAL 8C-30-L (REV-A.0) PWP

Page 6 of 10



REFERENCE WELLPATH IDENTIFICATION			
Operator	SRC ENERGY	Slot	SLOT#11 SEELEY FEDERAL 8C-30-L (1913'FNL & 1594'FEL, SEC.26)
Area	COLORADO	Well	SEELEY FEDERAL 8C-30-L
Field	WELD COUNTY (NAD83,TRUE NORTH)	Wellbore	SEELEY FEDERAL 8C-30-L PWB
Facility	SEC.26-T06N-R66W		

WELLPATH DATA (186 stations) † = interpolated/extrapolated station								
MD [ft]	Inclination [°]	Azimuth [°]	TVD [ft]	Vert Sect [ft]	North [ft]	East [ft]	DLS [°/100ft]	Comments
11504.00†	90.083	90.496	7136.32	5641.60	68.25	5641.54	0.00	
11604.00†	90.083	90.496	7136.18	5741.60	67.38	5741.53	0.00	
11704.00†	90.083	90.496	7136.03	5841.60	66.52	5841.53	0.00	
11804.00†	90.083	90.496	7135.89	5941.59	65.65	5941.52	0.00	
11904.00†	90.083	90.496	7135.74	6041.59	64.79	6041.52	0.00	
12004.00†	90.083	90.496	7135.59	6141.58	63.92	6141.52	0.00	
12104.00†	90.083	90.496	7135.45	6241.58	63.06	6241.51	0.00	
12204.00†	90.083	90.496	7135.30	6341.57	62.19	6341.51	0.00	
12304.00†	90.083	90.496	7135.16	6441.57	61.32	6441.50	0.00	
12404.00†	90.083	90.496	7135.01	6541.56	60.46	6541.50	0.00	
12504.00†	90.083	90.496	7134.87	6641.56	59.59	6641.50	0.00	
12604.00†	90.083	90.496	7134.72	6741.55	58.73	6741.49	0.00	
12704.00†	90.083	90.496	7134.58	6841.55	57.86	6841.49	0.00	
12804.00†	90.083	90.496	7134.43	6941.54	56.99	6941.49	0.00	
12904.00†	90.083	90.496	7134.28	7041.54	56.13	7041.48	0.00	
13004.00†	90.083	90.496	7134.14	7141.53	55.26	7141.48	0.00	
13104.00†	90.083	90.496	7133.99	7241.53	54.40	7241.47	0.00	
13204.00†	90.083	90.496	7133.85	7341.52	53.53	7341.47	0.00	
13304.00†	90.083	90.496	7133.70	7441.52	52.67	7441.47	0.00	
13404.00†	90.083	90.496	7133.56	7541.51	51.80	7541.46	0.00	
13504.00†	90.083	90.496	7133.41	7641.51	50.93	7641.46	0.00	
13604.00†	90.083	90.496	7133.27	7741.50	50.07	7741.45	0.00	
13704.00†	90.083	90.496	7133.12	7841.50	49.20	7841.45	0.00	
13804.00†	90.083	90.496	7132.97	7941.49	48.34	7941.45	0.00	
13904.00†	90.083	90.496	7132.83	8041.49	47.47	8041.44	0.00	
14004.00†	90.083	90.496	7132.68	8141.48	46.60	8141.44	0.00	
14104.00†	90.083	90.496	7132.54	8241.48	45.74	8241.44	0.00	
14204.00†	90.083	90.496	7132.39	8341.47	44.87	8341.43	0.00	
14304.00†	90.083	90.496	7132.25	8441.47	44.01	8441.43	0.00	
14404.00†	90.083	90.496	7132.10	8541.46	43.14	8541.42	0.00	





SRC ENERGY

# Planned Wellpath Report

SEELEY FEDERAL 8C-30-L (REV-A.0) PWP

Page 7 of 10

**REFERENCE WELLPATH IDENTIFICATION**

Operator	SRC ENERGY	Slot	SLOT#11 SEELEY FEDERAL 8C-30-L (1913'FNL & 1594'FEL, SEC.26)
Area	COLORADO	Well	SEELEY FEDERAL 8C-30-L
Field	WELD COUNTY (NAD83, TRUE NORTH)	Wellbore	SEELEY FEDERAL 8C-30-L PWB
Facility	SEC.26-T06N-R66W		

**WELLPATH DATA (186 stations)** † = interpolated/extrapolated station

MD [ft]	Inclination [°]	Azimuth [°]	TVD [ft]	Vert Sect [ft]	North [ft]	East [ft]	DLS [°/100ft]	Comments
14504.00†	90.083	90.496	7131.95	8641.46	42.28	8641.42	0.00	
14604.00†	90.083	90.496	7131.81	8741.45	41.41	8741.42	0.00	
14704.00†	90.083	90.496	7131.66	8841.45	40.54	8841.41	0.00	
14804.00†	90.083	90.496	7131.52	8941.45	39.68	8941.41	0.00	
14904.00†	90.083	90.496	7131.37	9041.44	38.81	9041.40	0.00	
15004.00†	90.083	90.496	7131.23	9141.44	37.95	9141.40	0.00	
15104.00†	90.083	90.496	7131.08	9241.43	37.08	9241.40	0.00	
15204.00†	90.083	90.496	7130.94	9341.43	36.21	9341.39	0.00	
15304.00†	90.083	90.496	7130.79	9441.42	35.35	9441.39	0.00	
15404.00†	90.083	90.496	7130.64	9541.42	34.48	9541.38	0.00	
15504.00†	90.083	90.496	7130.50	9641.41	33.62	9641.38	0.00	
15604.00†	90.083	90.496	7130.35	9741.41	32.75	9741.38	0.00	
15704.00†	90.083	90.496	7130.21	9841.40	31.89	9841.37	0.00	
15804.00†	90.083	90.496	7130.06	9941.40	31.02	9941.37	0.00	
15904.00†	90.083	90.496	7129.92	10041.39	30.15	10041.37	0.00	
16004.00†	90.083	90.496	7129.77	10141.39	29.29	10141.36	0.00	
16104.00†	90.083	90.496	7129.62	10241.38	28.42	10241.36	0.00	
16204.00†	90.083	90.496	7129.48	10341.38	27.56	10341.35	0.00	
16304.00†	90.083	90.496	7129.33	10441.37	26.69	10441.35	0.00	
16404.00†	90.083	90.496	7129.19	10541.37	25.82	10541.35	0.00	
16504.00†	90.083	90.496	7129.04	10641.36	24.96	10641.34	0.00	
16604.00†	90.083	90.496	7128.90	10741.36	24.09	10741.34	0.00	
16704.00†	90.083	90.496	7128.75	10841.35	23.23	10841.33	0.00	
16804.00†	90.083	90.496	7128.61	10941.35	22.36	10941.33	0.00	
16904.00†	90.083	90.496	7128.46	11041.34	21.50	11041.33	0.00	
17004.00†	90.083	90.496	7128.31	11141.34	20.63	11141.32	0.00	
17104.00†	90.083	90.496	7128.17	11241.33	19.76	11241.32	0.00	
17204.00†	90.083	90.496	7128.02	11341.33	18.90	11341.32	0.00	
17304.00†	90.083	90.496	7127.88	11441.32	18.03	11441.31	0.00	
17404.00†	90.083	90.496	7127.73	11541.32	17.17	11541.31	0.00	



SRC ENERGY

# Planned Wellpath Report

SEELEY FEDERAL 8C-30-L (REV-A.0) PWP

Page 8 of 10

**BAKER  
HUGHES**

## REFERENCE WELLPATH IDENTIFICATION

Operator	SRC ENERGY	Slot	SLOT#11 SEELEY FEDERAL 8C-30-L (1913'FNL & 1594'FEL, SEC.26)
Area	COLORADO	Well	SEELEY FEDERAL 8C-30-L
Field	WELD COUNTY (NAD83, TRUE NORTH)	Wellbore	SEELEY FEDERAL 8C-30-L PWB
Facility	SEC.26-T06N-R66W		

## WELLPATH DATA (186 stations) † = interpolated/extrapolated station

MD [ft]	Inclination [°]	Azimuth [°]	TVD [ft]	Vert Sect [ft]	North [ft]	East [ft]	DLS [°/100ft]	Comments
17504.00†	90.083	90.496	7127.59	11641.31	16.30	11641.30	0.00	
17604.00†	90.083	90.496	7127.44	11741.31	15.43	11741.30	0.00	
17704.00†	90.083	90.496	7127.29	11841.31	14.57	11841.30	0.00	
17804.00†	90.083	90.496	7127.15	11941.30	13.70	11941.29	0.00	
17904.00†	90.083	90.496	7127.00	12041.30	12.84	12041.29	0.00	
17906.44	90.083	90.496	7127.00 <sup>2</sup>	12043.73	12.82	12043.73	0.00	End of Tangent (XS)

## HOLE & CASING SECTIONS

**- Ref Wellbore: SEELEY FEDERAL 8C-30-L PWB      Ref Wellpath: SEELEY FEDERAL 8C-30-L (REV-A.0) PWP**

String/Diameter	Start MD [ft]	End MD [ft]	Interval [ft]	Start TVD [ft]	End TVD [ft]	Start N/S [ft]	Start E/W [ft]	End N/S [ft]	End E/W [ft]
13.5in Open Hole	4.00	1750.00	1746.00	4.00	1730.54	0.00	0.00	20.29	230.39
9.625in Casing Surface	4.00	1750.00	1746.00	4.00	1730.54	0.00	0.00	20.29	230.39
8.5in Open Hole	1750.00	17906.44	16156.44	1730.54	7127.00	20.29	230.39	12.82	12043.73



# Planned Wellpath Report

## SEELEY FEDERAL 8C-30-L (REV-A.0) PWP

Page 9 of 10



REFERENCE WELLPATH IDENTIFICATION			
Operator	SRC ENERGY	Slot	SLOT#11 SEELEY FEDERAL 8C-30-L (1913'FNL & 1594'FEL, SEC.26)
Area	COLORADO	Well	SEELEY FEDERAL 8C-30-L
Field	WELD COUNTY (NAD83, TRUE NORTH)	Wellbore	SEELEY FEDERAL 8C-30-L PWB
Facility	SEC.26-T06N-R66W		

TARGETS									
Name	MD [ft]	TVD [ft]	North [ft]	East [ft]	Grid East [US ft]	Grid North [US ft]	Latitude	Longitude	Shape
EAST HALF OF SEC.02-T05N-R66W		-22.00	200.07	1.62	3211308.44	1412009.18	40°27'42.779"N	104°44'26.117"W	polygon
EAST HALF OF SEC.26-T06N-R66W		-22.00	200.07	1.62	3211308.44	1412009.18	40°27'42.779"N	104°44'26.117"W	polygon
EAST HALF OF SEC.35-T06N-R66W		-22.00	200.07	1.62	3211308.44	1412009.18	40°27'42.779"N	104°44'26.117"W	polygon
SEC.25-T06N-R66W		-22.00	200.07	1.62	3211308.44	1412009.18	40°27'42.779"N	104°44'26.117"W	polygon
SEC.30-T06N-R65W		-22.00	200.07	1.62	3211308.44	1412009.18	40°27'42.779"N	104°44'26.117"W	polygon
SOUTH HALF OF SEC.19-T06N-R65W		-22.00	200.07	1.62	3211308.44	1412009.18	40°27'42.779"N	104°44'26.117"W	polygon
SOUTH HALF OF SEC.24-T06N-R66W		-22.00	200.07	1.62	3211308.44	1412009.18	40°27'42.779"N	104°44'26.117"W	polygon
2) SEELEY FEDERAL 8C-30-L BHL ON PLAT (1865'FNL & 150'FEL, SEC.30)	17906.44	7127.00	12.82	12043.73	3223351.24	1411925.06	40°27'40.900"N	104°41'50.327"W	circle
SEELEY FEDERAL 8C-30-L TOP OF PROD ON PLAT (1865'FNL & 150'FWL, SEC.25)		7142.00	46.01	1743.04	3213051.05	1411870.04	40°27'41.256"N	104°44'03.588"W	point
1) SEELEY FEDERAL 8C-30-L TOP OF PROD REV-2 (1809'FNL & 150'FWL, SEC.25)	7605.36	7142.00	102.01	1743.04	3213050.57	1411926.04	40°27'41.809"N	104°44'03.588"W	circle



# Planned Wellpath Report

SEELEY FEDERAL 8C-30-L (REV-A.0) PWP

Page 10 of 10



REFERENCE WELLPATH IDENTIFICATION			
Operator	SRC ENERGY	Slot	SLOT#11 SEELEY FEDERAL 8C-30-L (1913'FNL & 1594'FEL, SEC.26)
Area	COLORADO	Well	SEELEY FEDERAL 8C-30-L
Field	WELD COUNTY (NAD83,TRUE NORTH)	Wellbore	SEELEY FEDERAL 8C-30-L PWB
Facility	SEC.26-T06N-R66W		

SURVEY PROGRAM -				
Ref Wellbore: SEELEY FEDERAL 8C-30-L PWB      Ref Wellpath: SEELEY FEDERAL 8C-30-L (REV-A.0) PWP				
Start MD [ft]	End MD [ft]	Positional Uncertainty Model	Log Name/Comment	Wellbore
4.00	1750.00	BHI NaviTrak (Rotating+Axial Corr)		SEELEY FEDERAL 8C-30-L PWB
1750.00	17906.44	BHI AutoTrak Curve (IFR1, Short)		SEELEY FEDERAL 8C-30-L PWB