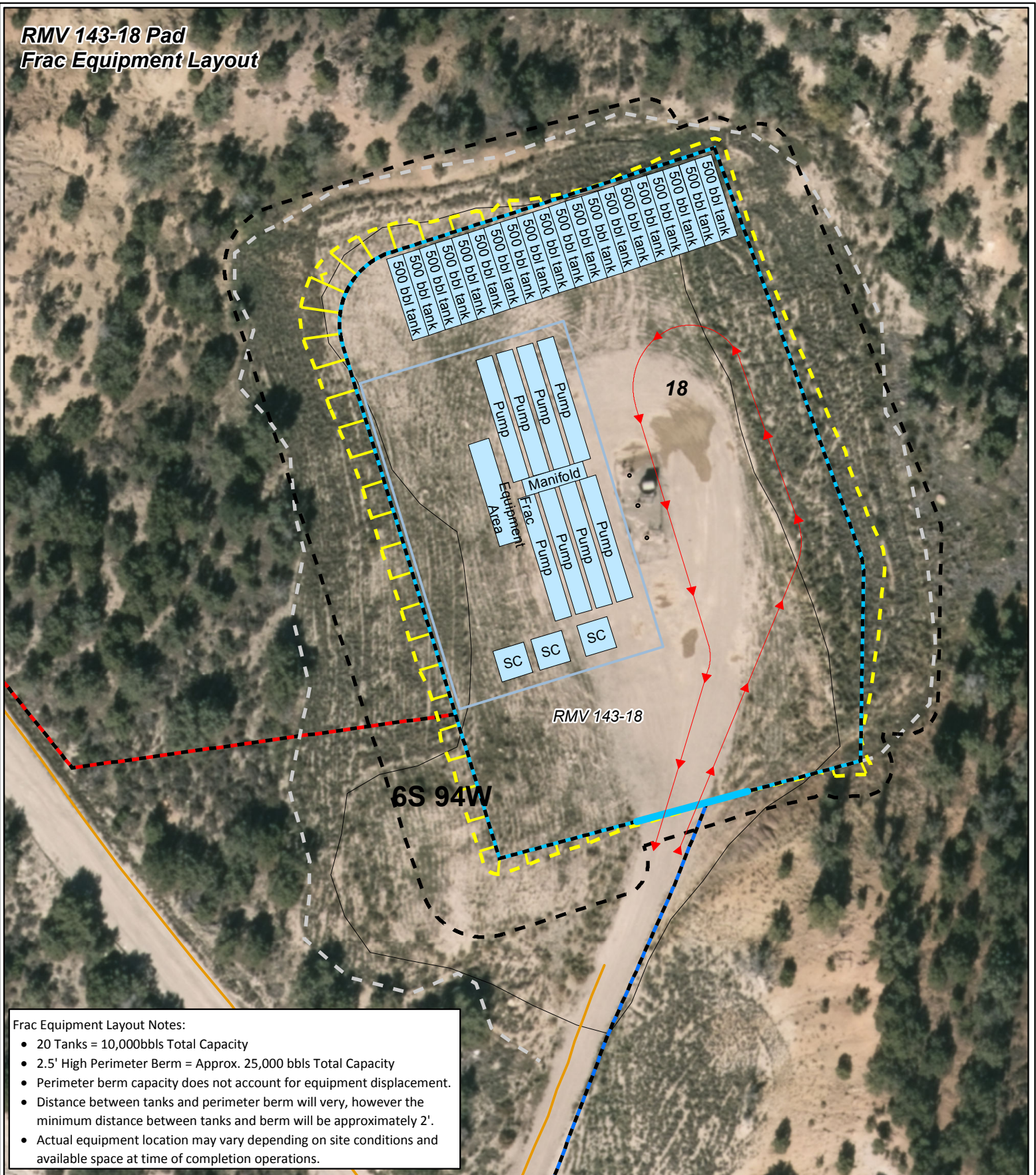
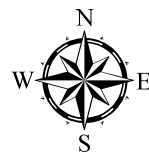


# **RMV 143-18 Pad Frac Equipment Layout**



- Legend**
- |                                 |                                       |
|---------------------------------|---------------------------------------|
| — Proposed Daylight Line        | — Proposed Frac Lines (3-4.5" Steel)  |
| — Proposed Pad                  | — Frac Water Supply Line (2-10" Poly) |
| — Existing Well                 | — Frac Equipment                      |
| — Existing Limit of Disturbance | — Frac Equipment Area                 |
| — Proposed Limit of Disturbance | — Existing Pad                        |
| — Perimeter Berm (2.5' High)    | — Existing Road                       |
| — Drive Over Berm (2.5' High)   |                                       |
| — Traffic Flow                  |                                       |



0 30 60 120 Feet

