

2018-06-21 17:00	1	14858.00	Oil Based Mud	10.1	18	N/A	N/A	62/38	Active Pit	65000	0.00
2018-06-22 05:00	1	16070.00	Oil Based Mud	10.1	20	N/A	N/A	61.5/38.5	Active Pit	58000	0.00
2018-06-22 11:27	2	16070.00	Oil Based Mud	10.1	18	N/A	N/A	62/38	Active Pit	65000	0.00
2018-06-23 05:00	2	16670.00	Oil Based Mud	10.1	19	N/A	N/A	60.5/39.5	Active Pit	64000	0.00

Mud Resistivity Record

Date / Time	Run No.	Measured Depth (ft)	Surface Temp (degF)	Surface			BHCT (degF)	Downhole		
				Rm (ohm.m)	Rmf (ohm.m)	Rmc (ohm.m)		Rm @ BHCT (ohm.m)	Rmf @ BHCT (ohm.m)	Rmc @ BHCT (ohm.m)
2018-06-20 05:00	1	9460.00	146.0	100.000	N/A	N/A	217.0	100.000	N/A	N/A
2018-06-20 17:00	1	10800.00	150.0	100.000	N/A	N/A	240.0	100.000	N/A	N/A
2018-06-21 05:00	1	12640.00	152.0	100.000	N/A	N/A	241.0	100.000	N/A	N/A
2018-06-21 17:00	1	14858.00	148.0	100.000	N/A	N/A	241.0	100.000	N/A	N/A
2018-06-22 17:00	2	16070.00	145.0	100.000	N/A	N/A	250.0	100.000	N/A	N/A
2018-06-23 05:00	2	16670.00	134.0	100.000	N/A	N/A	250.0	100.000	N/A	N/A

Equipment and Service Data

Run No.	Tool	Serial Number	Measurement	Sensor Offset (ft)	Bit Offset (ft)	Max O.D. (in)	Min I.D. (in)
1	ATC_SU	11994997	Near Bit Inclination	5.93	6.93	7.000	4.330
1	ATC_SU	11994997	Near Bit VSS	5.93	6.93	7.000	4.330
1	ATC_MWD	12271546	Gamma (single)	2.66	13.00	7.000	3.250
1	ATC_MWD	12271546	Directional (mag)	12.28	22.62	7.000	3.250
2	ATC_SU	14306237	Near Bit Inclination	5.93	6.93	7.000	4.330
2	ATC_SU	14306237	Near Bit VSS	5.93	6.93	7.000	4.330
2	ATC_MWD	12661246	Gamma (single)	2.77	13.10	7.000	3.250
2	ATC_MWD	12661246	Directional (mag)	12.29	22.62	7.000	3.250

Service and Tool Mnemonics

Mnemonic	Name	Description
ATC_SU	ATC_SU	Auto Trak Curve Steering Unit
ATC_MWD	ATC_MWD	Auto Trak Curve MWD
ATC_LCPM	ATC_LCPM	Auto Trak Curve LCPM

Comments


- 1 Depth measurements were obtained from a depth control system not supplied or operated by Baker Hughes, a GE Company (BHGE). Due to the lack of control by BHGE logging engineers, depth calibrations and measurements could not be independently verified.
- 2 BHGE LWD runs 1 and 2 utilized 6.75 inch NaviGamma Services (Gamma Ray and Directional) and Ontrak Services (Multiple Propagation Resistivity) behind a 8.5 inch bit and Rotary steerable assembly from 2220 to 18011 feet MD (2220 to 7729 feet TVD).

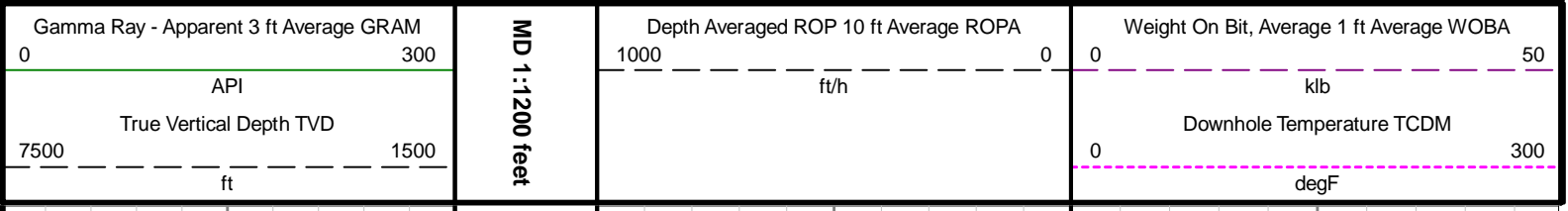
Remarks

Number	Measured Depth (ft)	Hole Section (in)	Run No.	Remark
1	2220.00	8.500	1	BHGE logging services began at 2220 feet MD (2220 feet TVD) per customer request.
2	18011.00	8.500	2	The interval from 17998 to 18011 feet MD (7729 feet TVD) was not logged due to sensor to bit offset at TD.

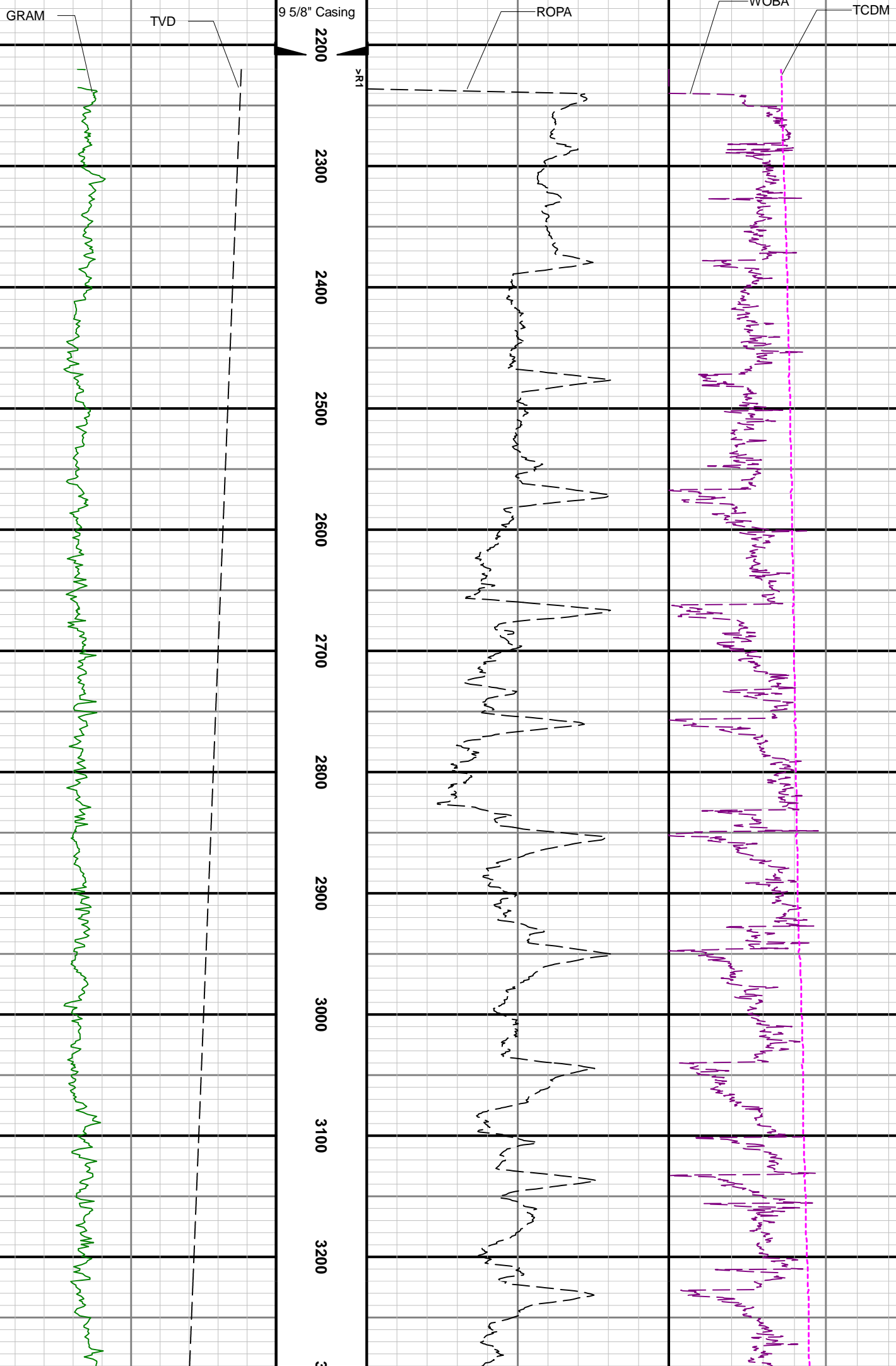
Curve Mnemonics

Presented Curves	Description	Units
ROPA	Depth Averaged ROP 10 ft Average	ft/h
TVD	True Vertical Depth	ft
WOBA	Weight On Bit, Average 1 ft Average	klb
GRAM	Gamma Ray - Apparent - Memory 3 ft Average	API
TCDM	Directional Real-Time Survey Temperature	degF

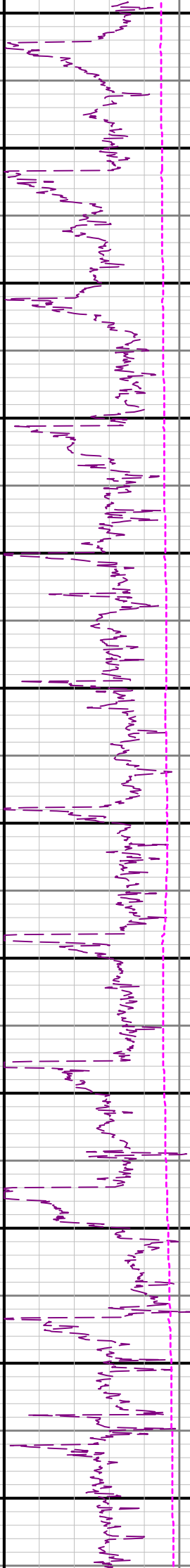
	Company	ConocoPhillips			
	Well	Florida_3-65_27-26_3AH			
	Interval	Date From:	2018-06-17 22:50	Top:	2220.00 ft
	Created	Date To:	2018-06-23 12:06	Bottom:	18011.00 ft
		Created 2018-06-24 08:02:03			



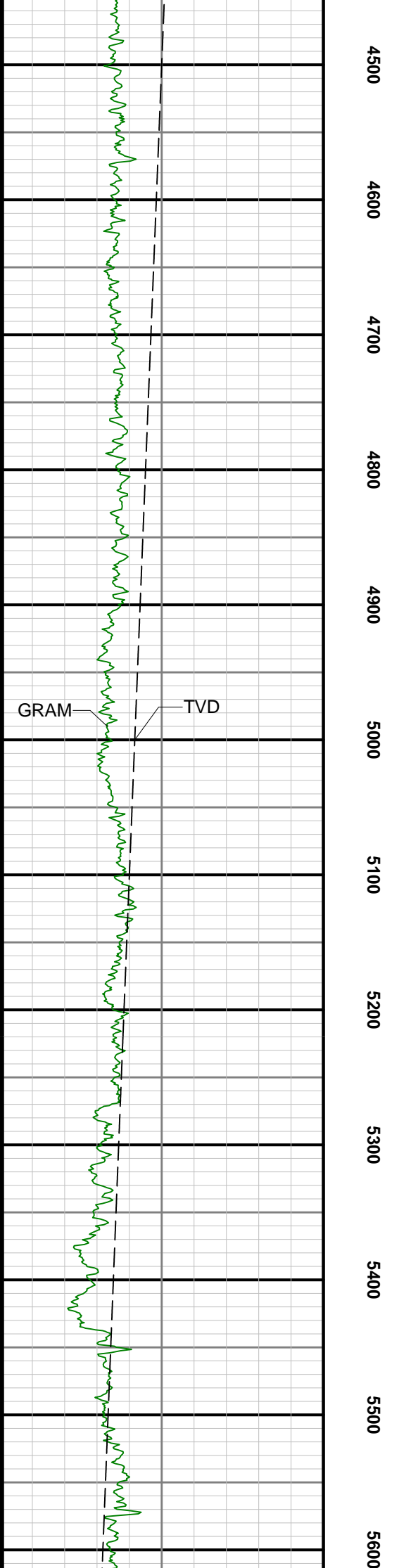
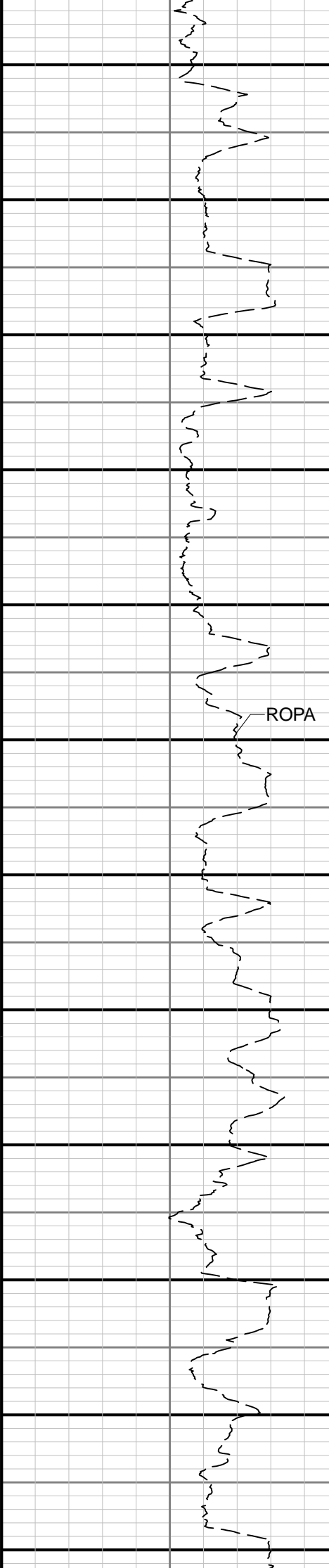
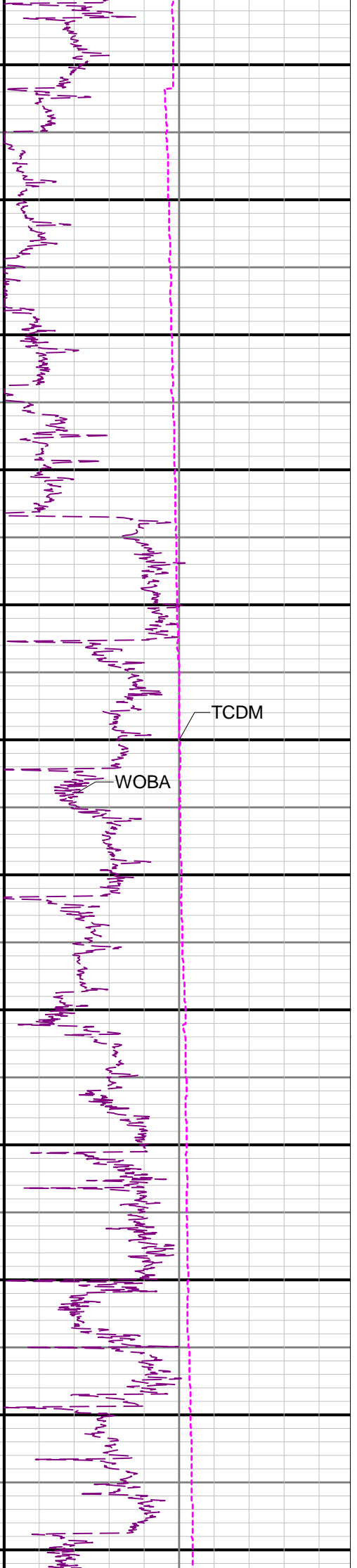
	2100		
		See Remark 1	



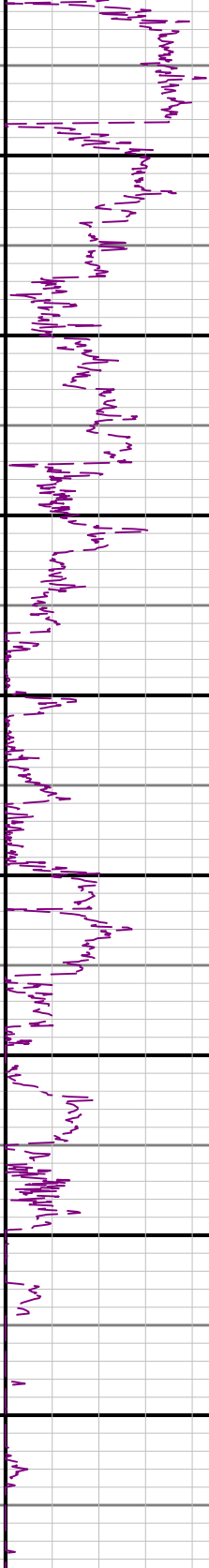
3300 3400 3500 3600 3700 3800 3900 4000 4100 4200 4300 4400

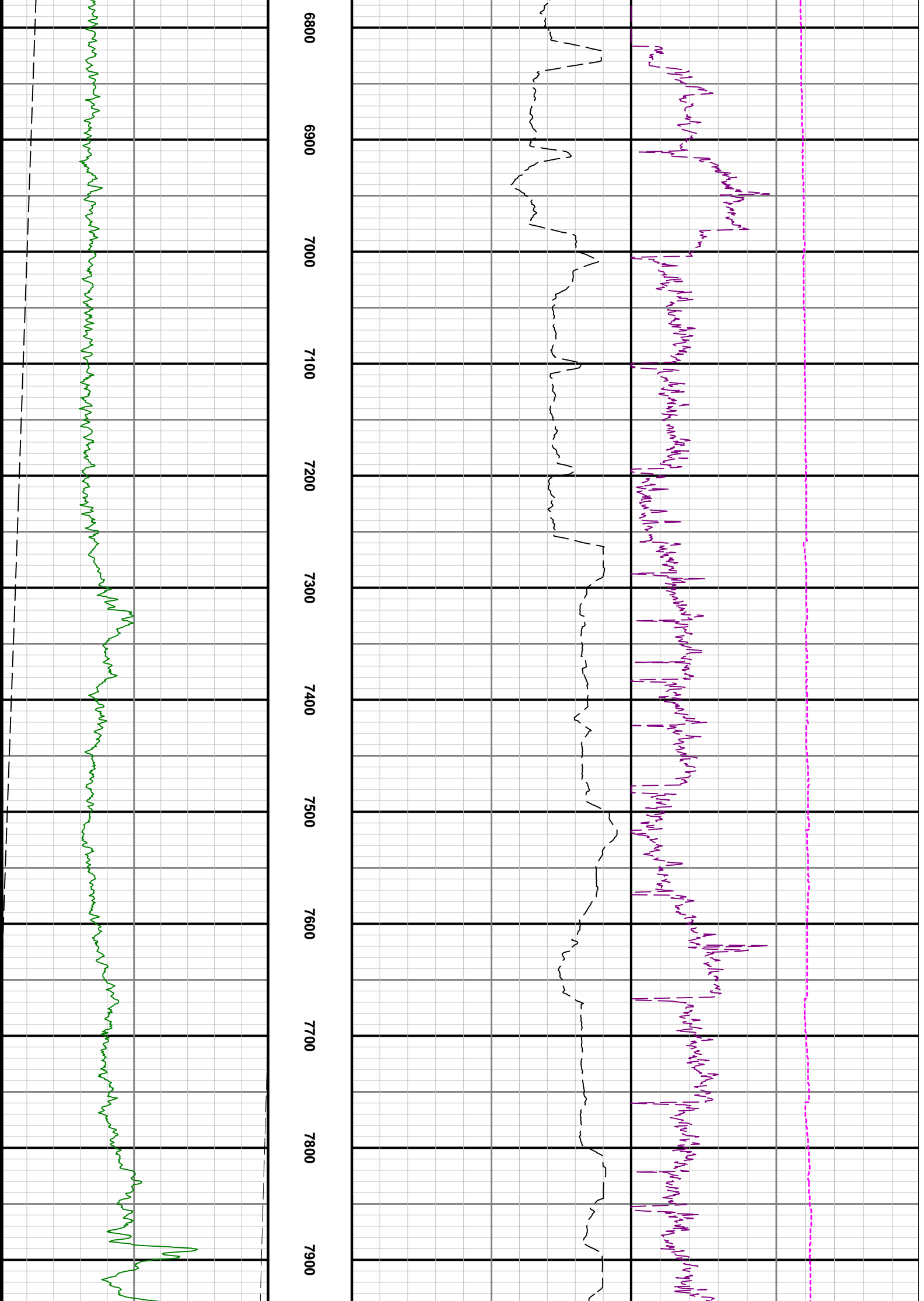


4500 4600 4700 4800 4900 5000 5100 5200 5300 5400 5500 5600

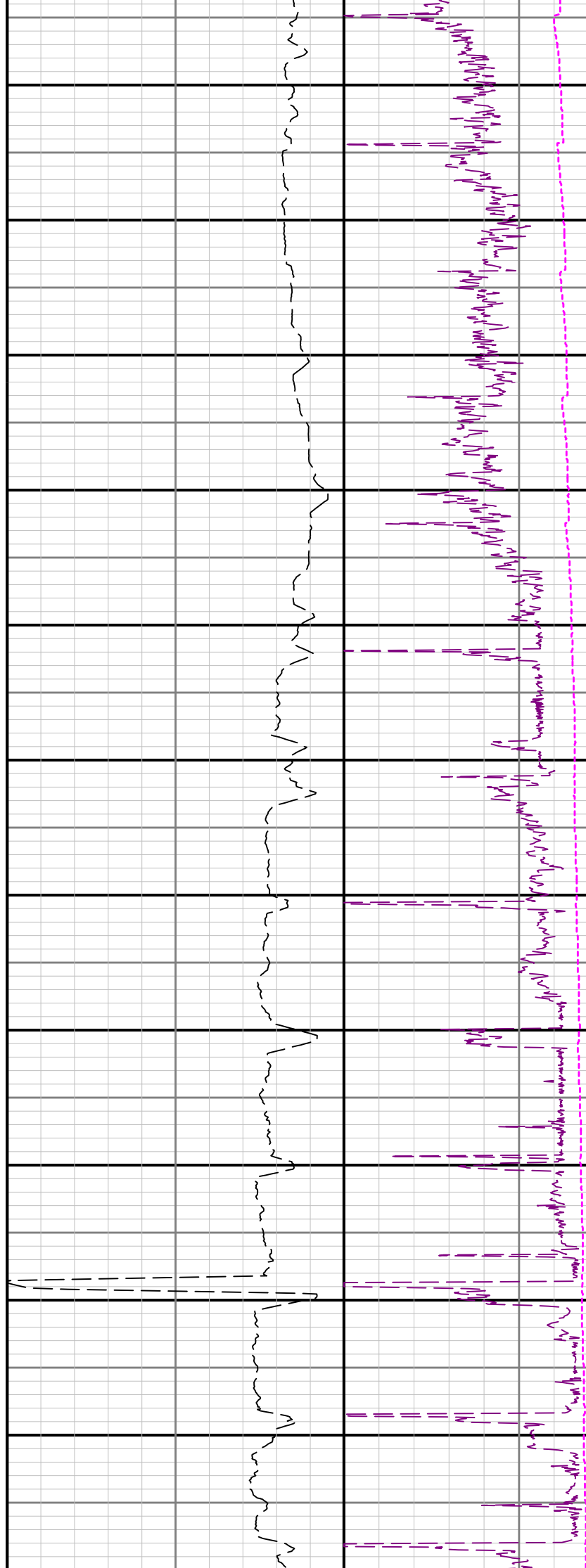
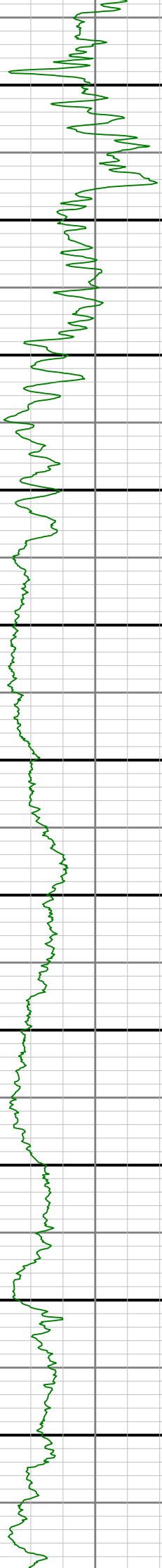


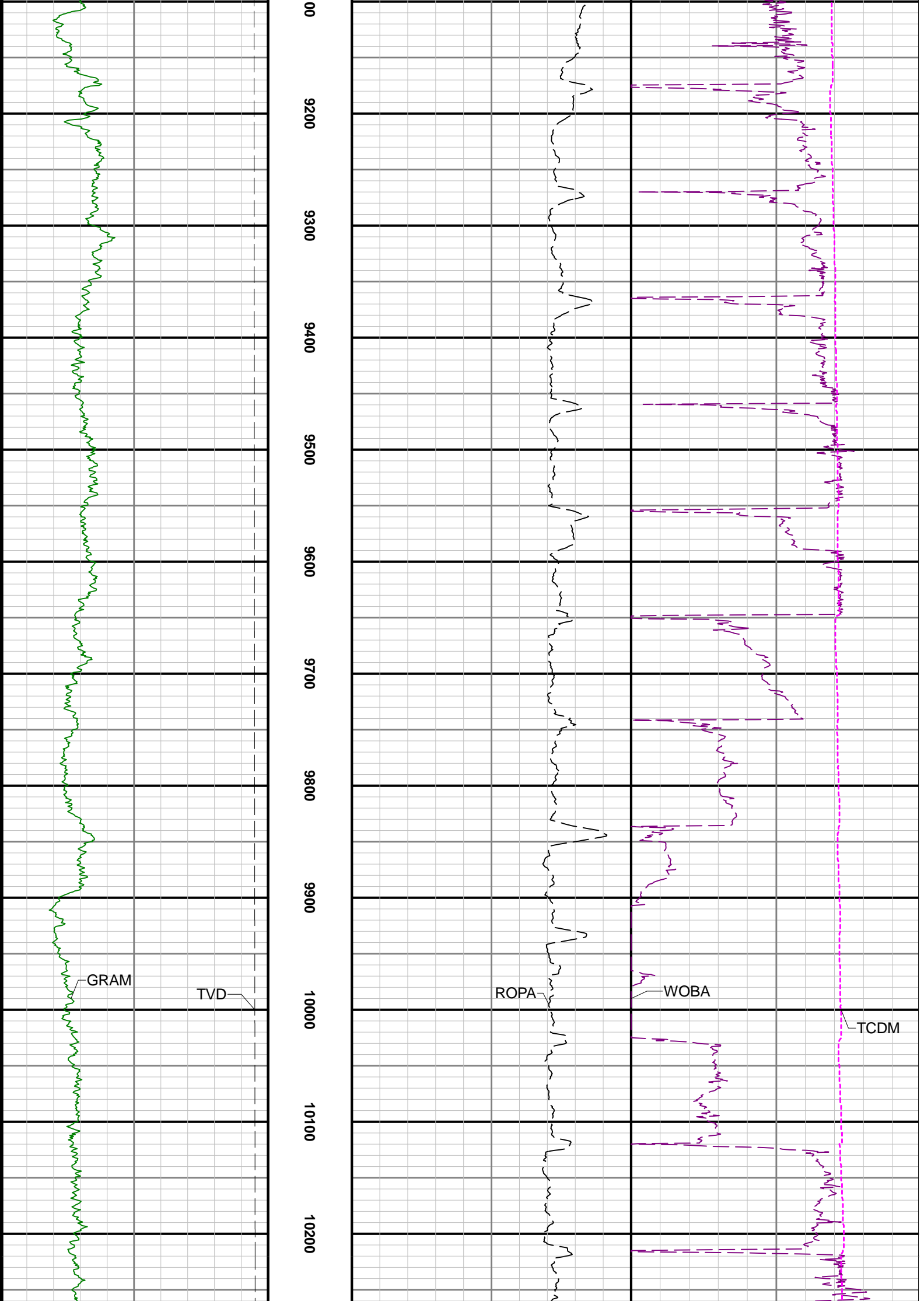
5700 5800 5900 6000 6100 6200 6300 6400 6500 6600 6700

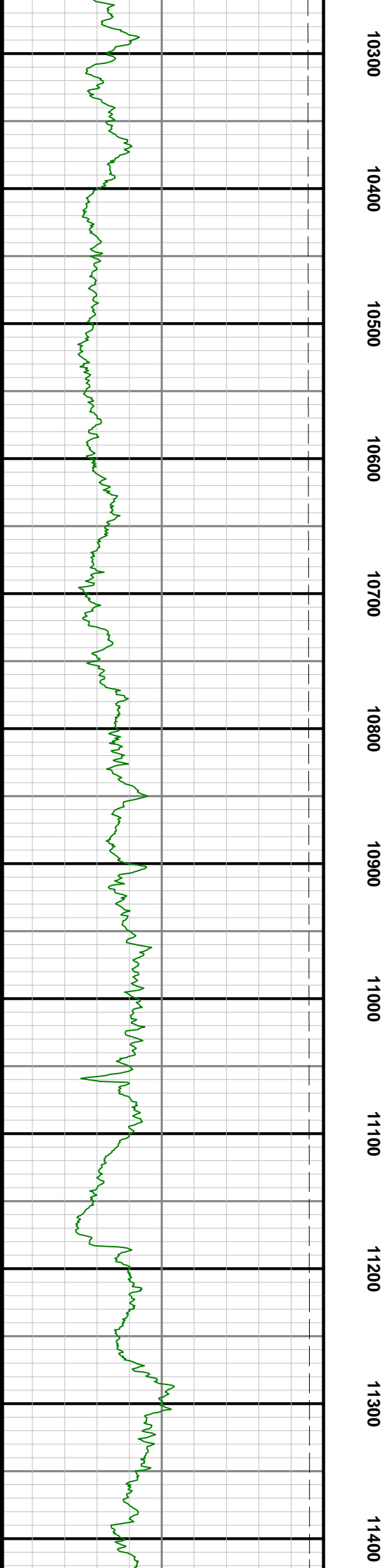
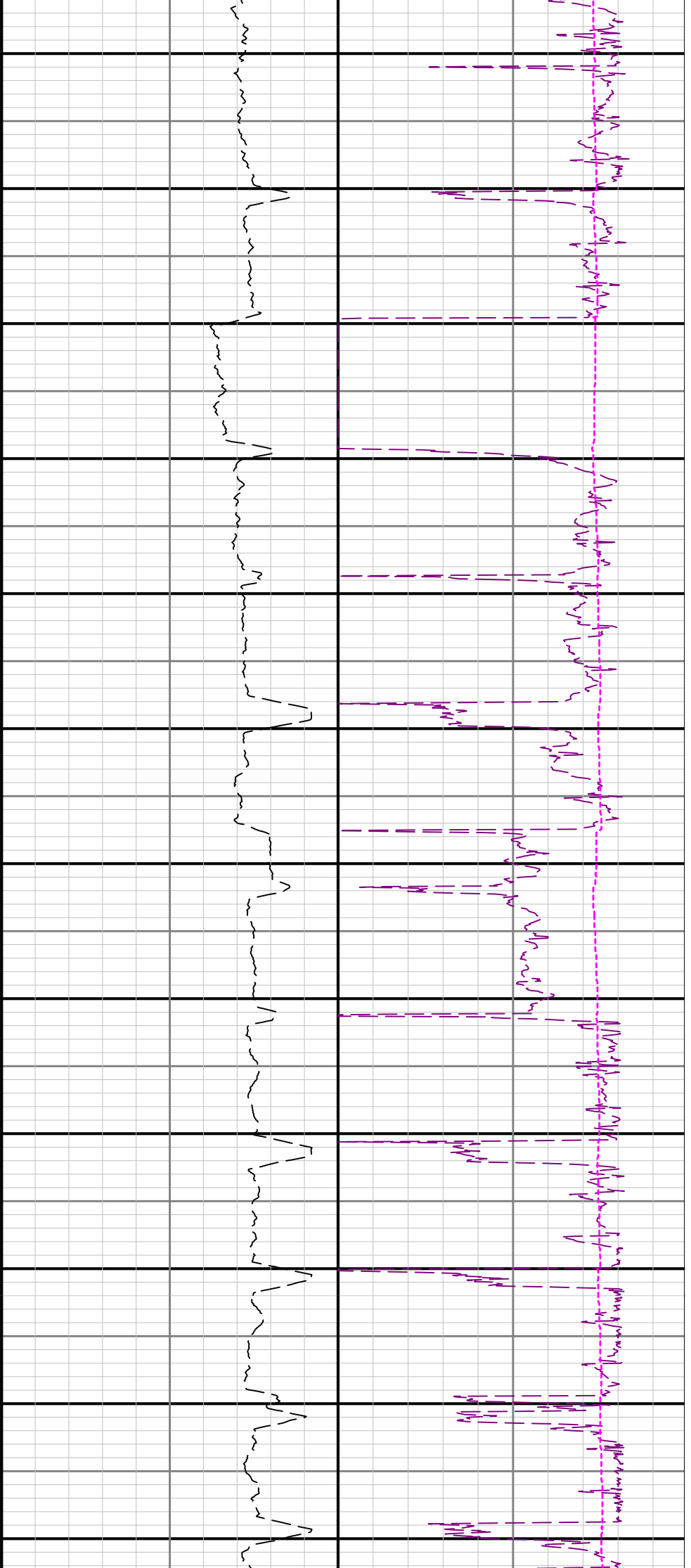


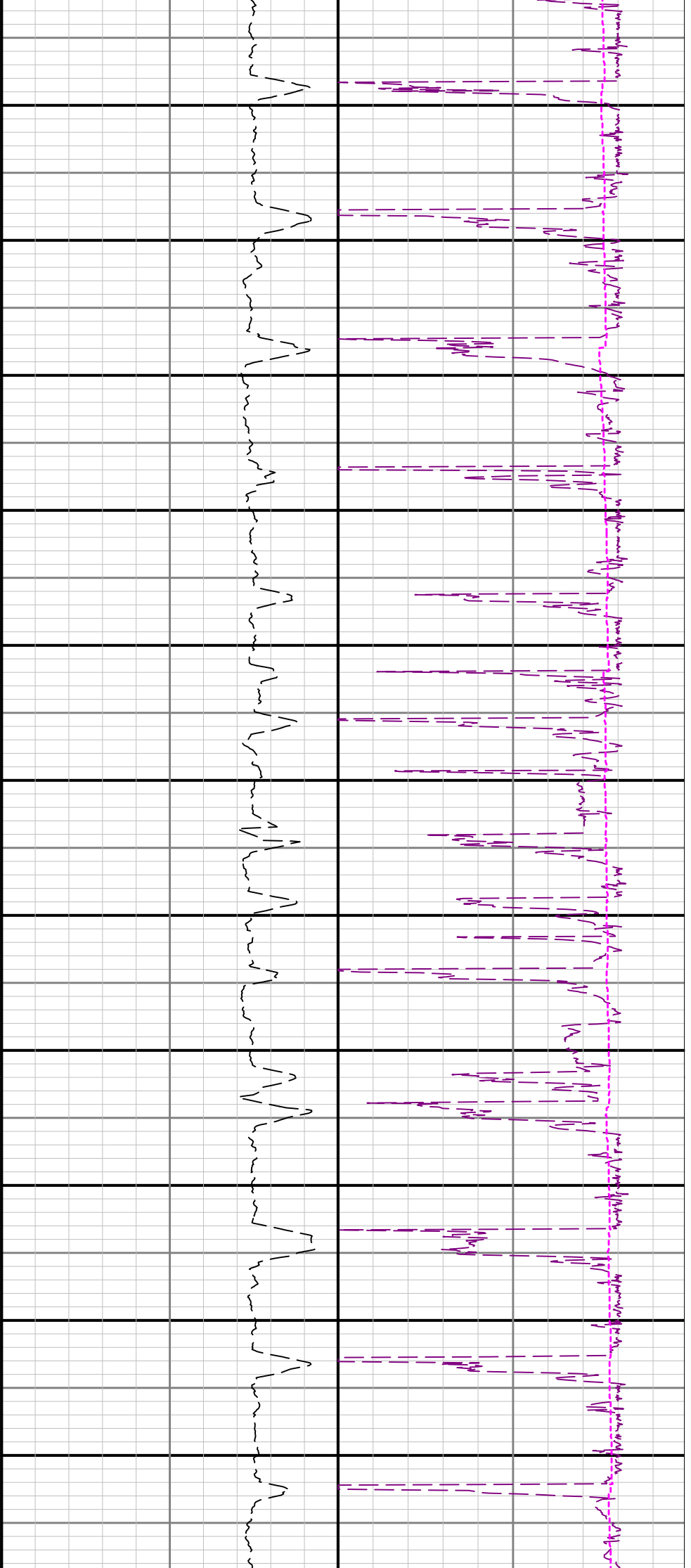


8000 8100 8200 8300 8400 8500 8600 8700 8800 8900 9000 91

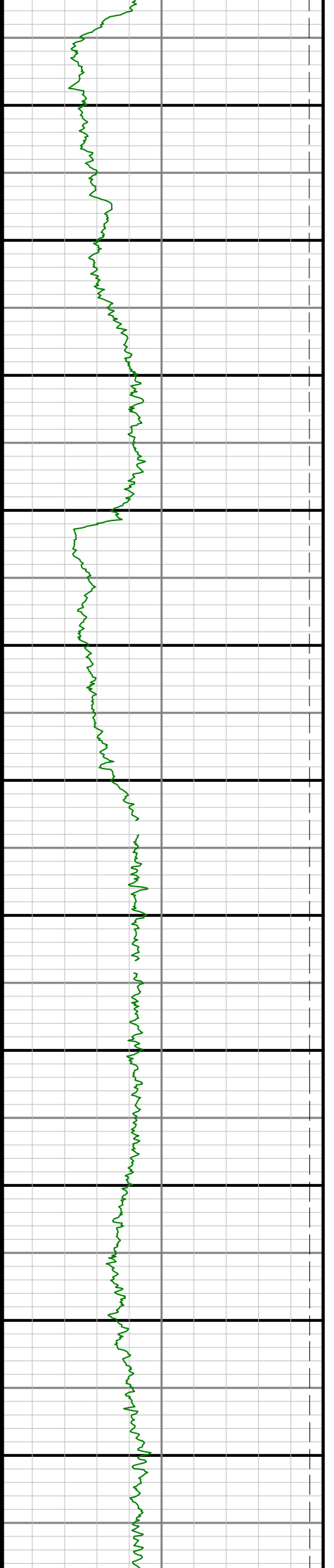


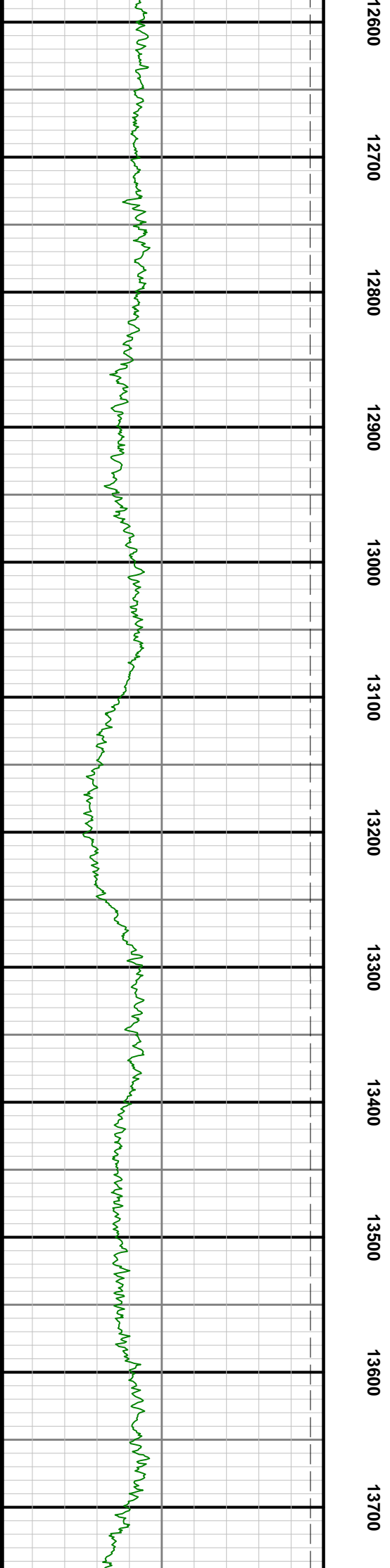
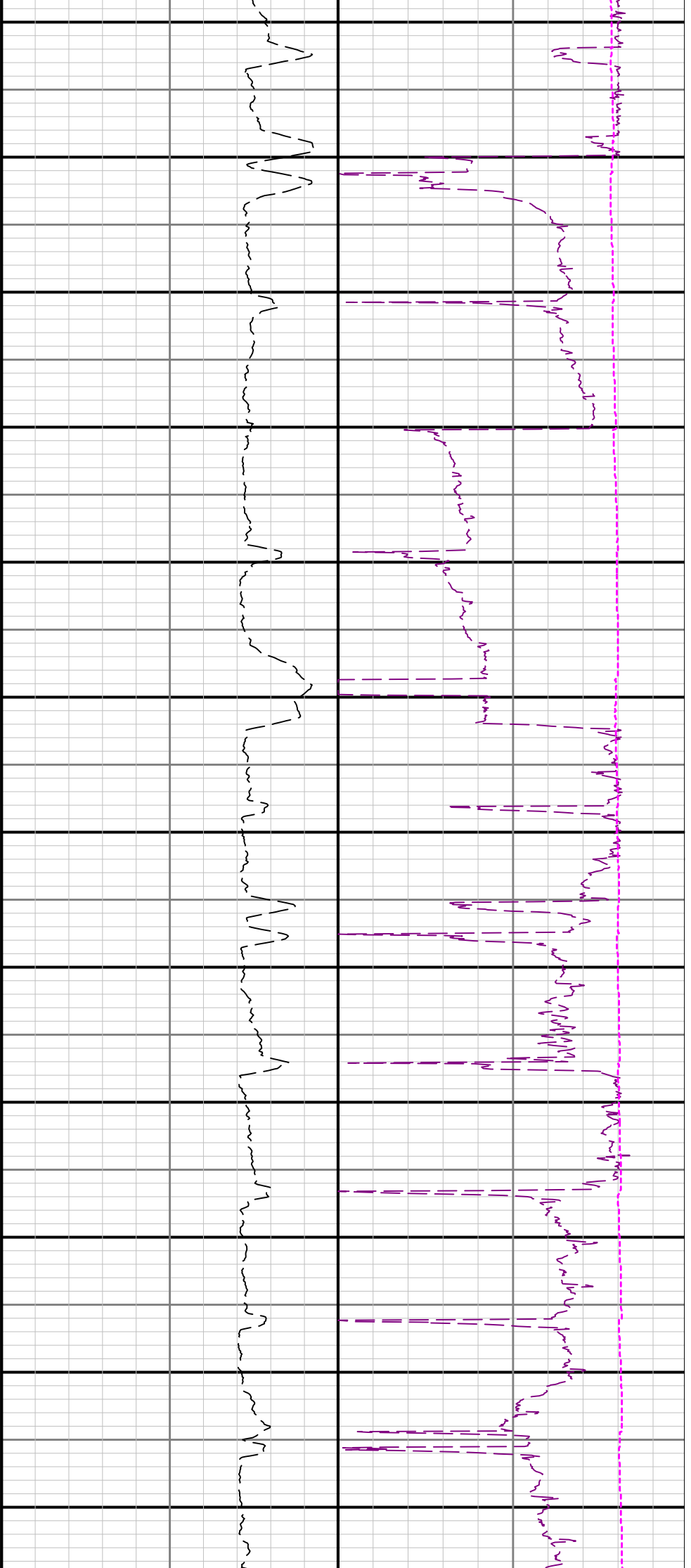


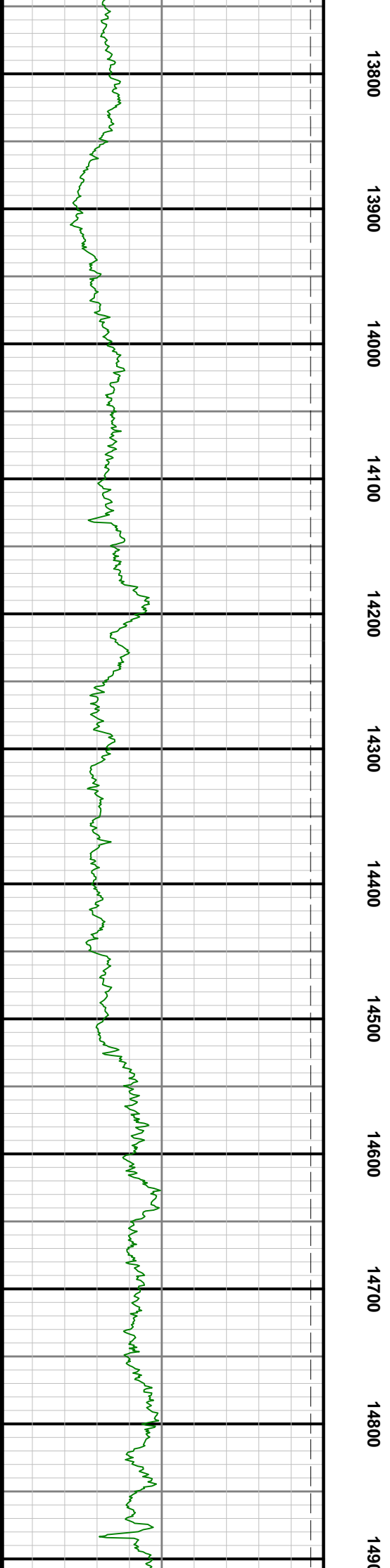
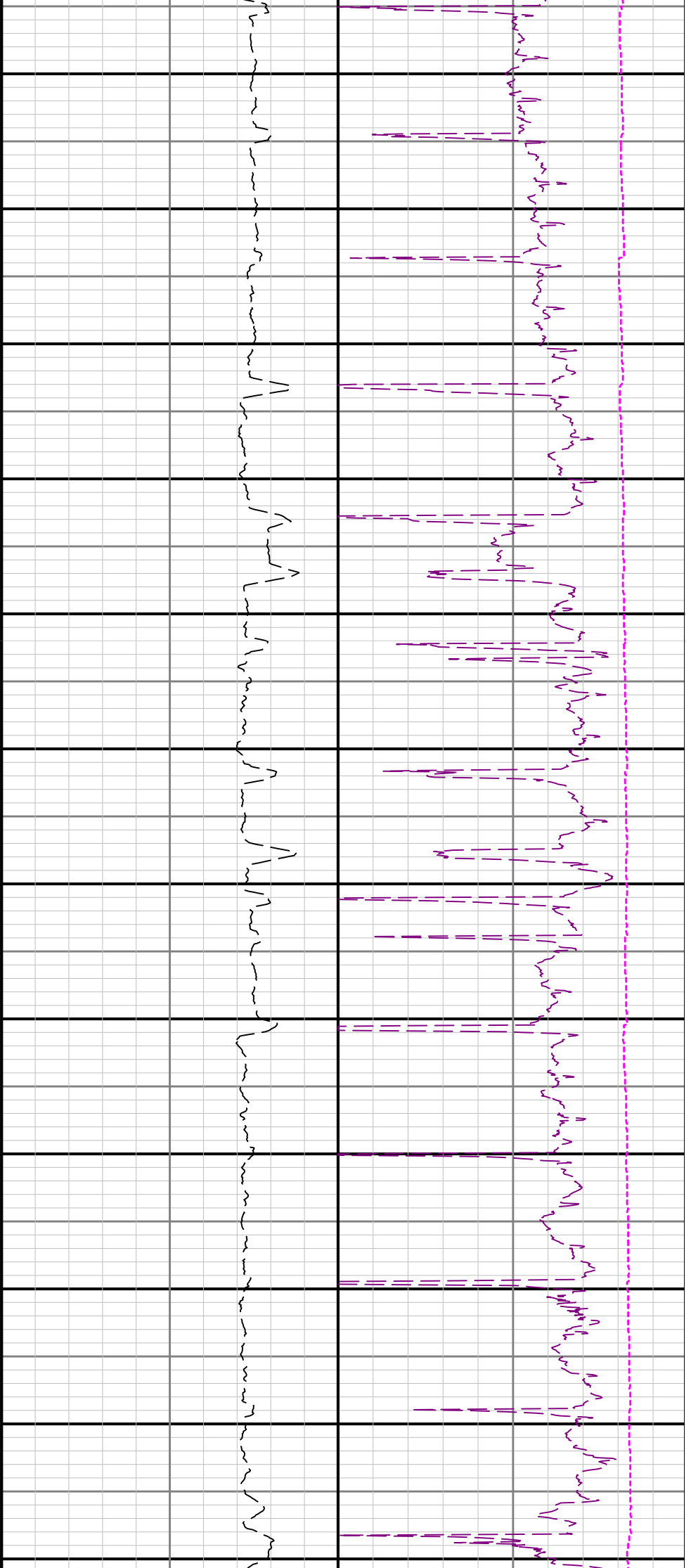


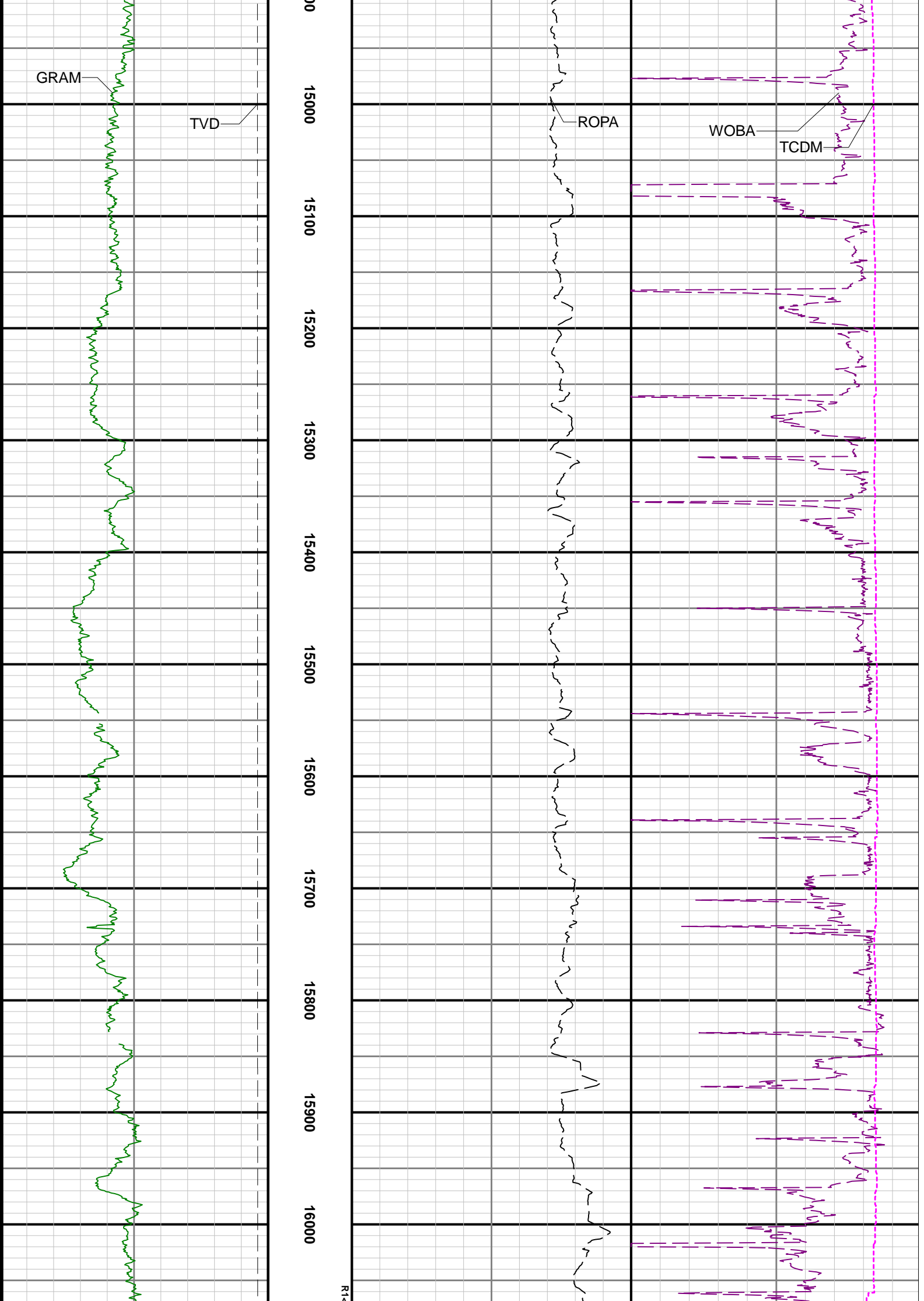


11500 11600 11700 11800 11900 12000 12100 12200 12300 12400 12500









GRAM

TVD

ROPA

WOBA

TCDM

15000

15100

15200

15300

15400

15500

15600

15700

15800

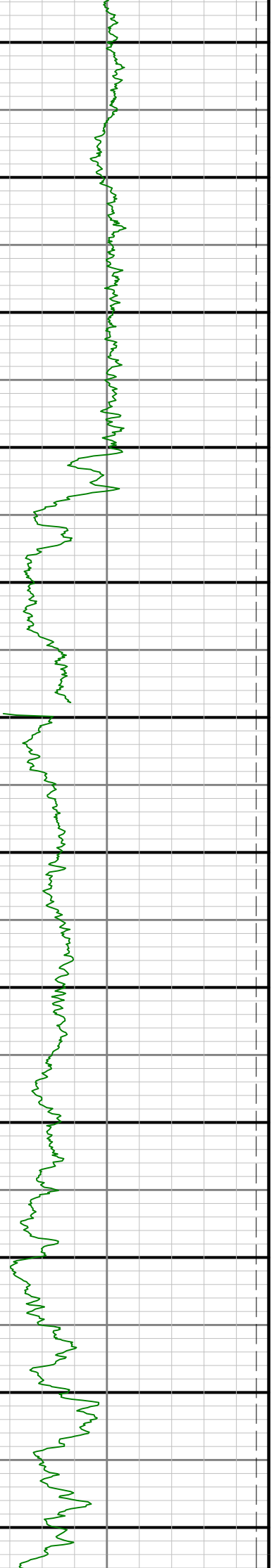
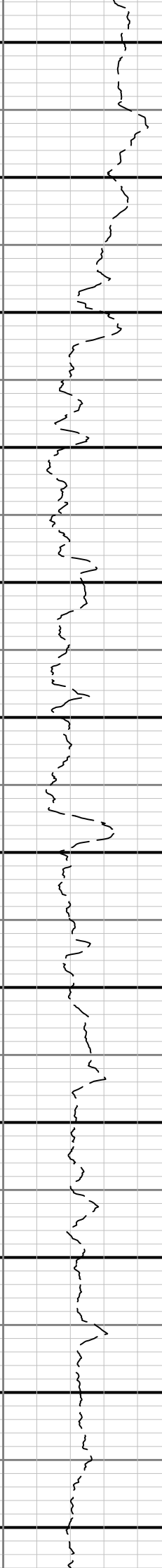
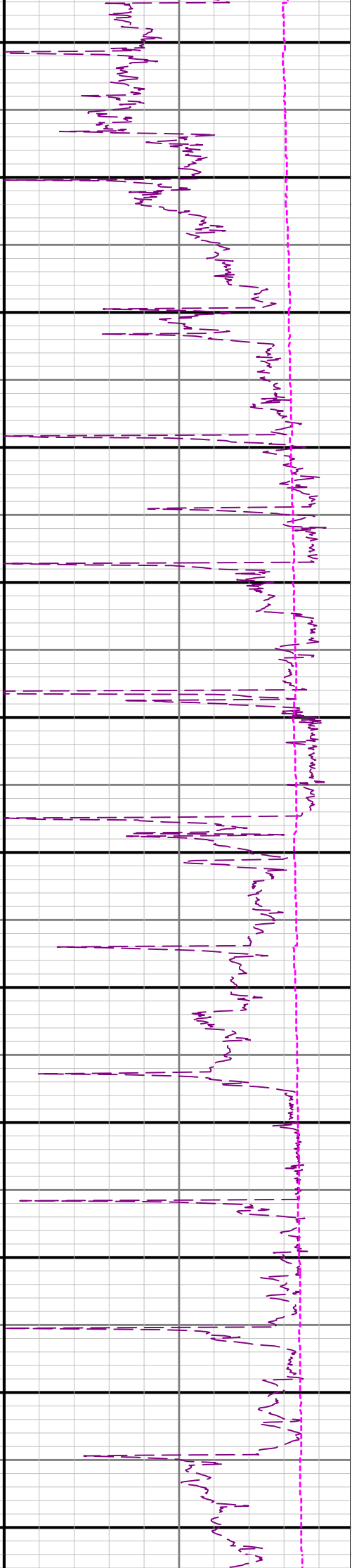
15900

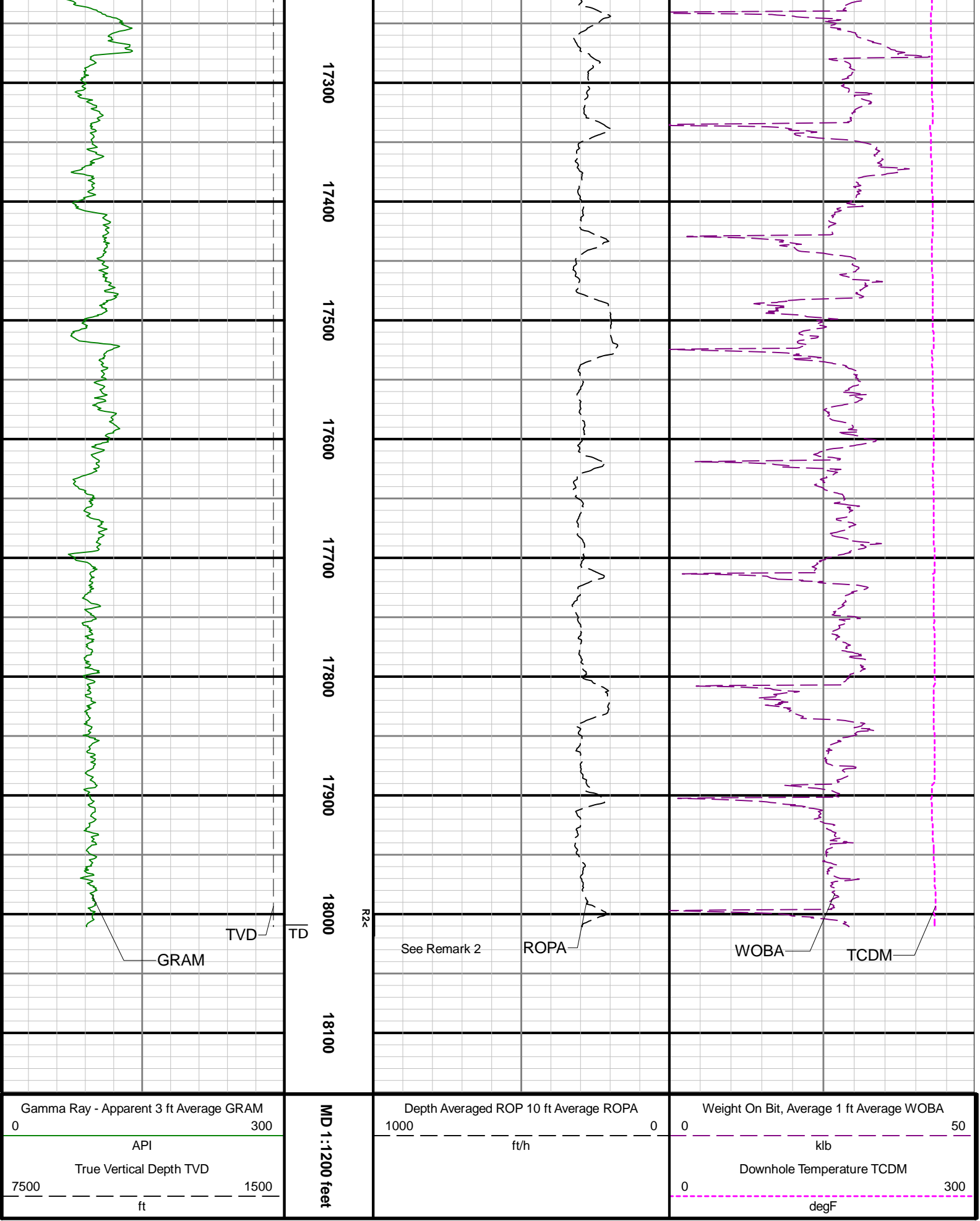
16000

R14

2-R2

16100 16200 16300 16400 16500 16600 16700 16800 16900 17000 17100 17200





Gamma Ray - Apparent 3 ft Average GRAM
 0 300
 API
 True Vertical Depth TVD
 7500 1500
 ft

MD 1:1200 feet

Depth Averaged ROP 10 ft Average ROPA
 1000 0
 ft/h

Weight On Bit, Average 1 ft Average WOBA
 0 50
 klb
 Downhole Temperature TCDM
 0 300
 degF