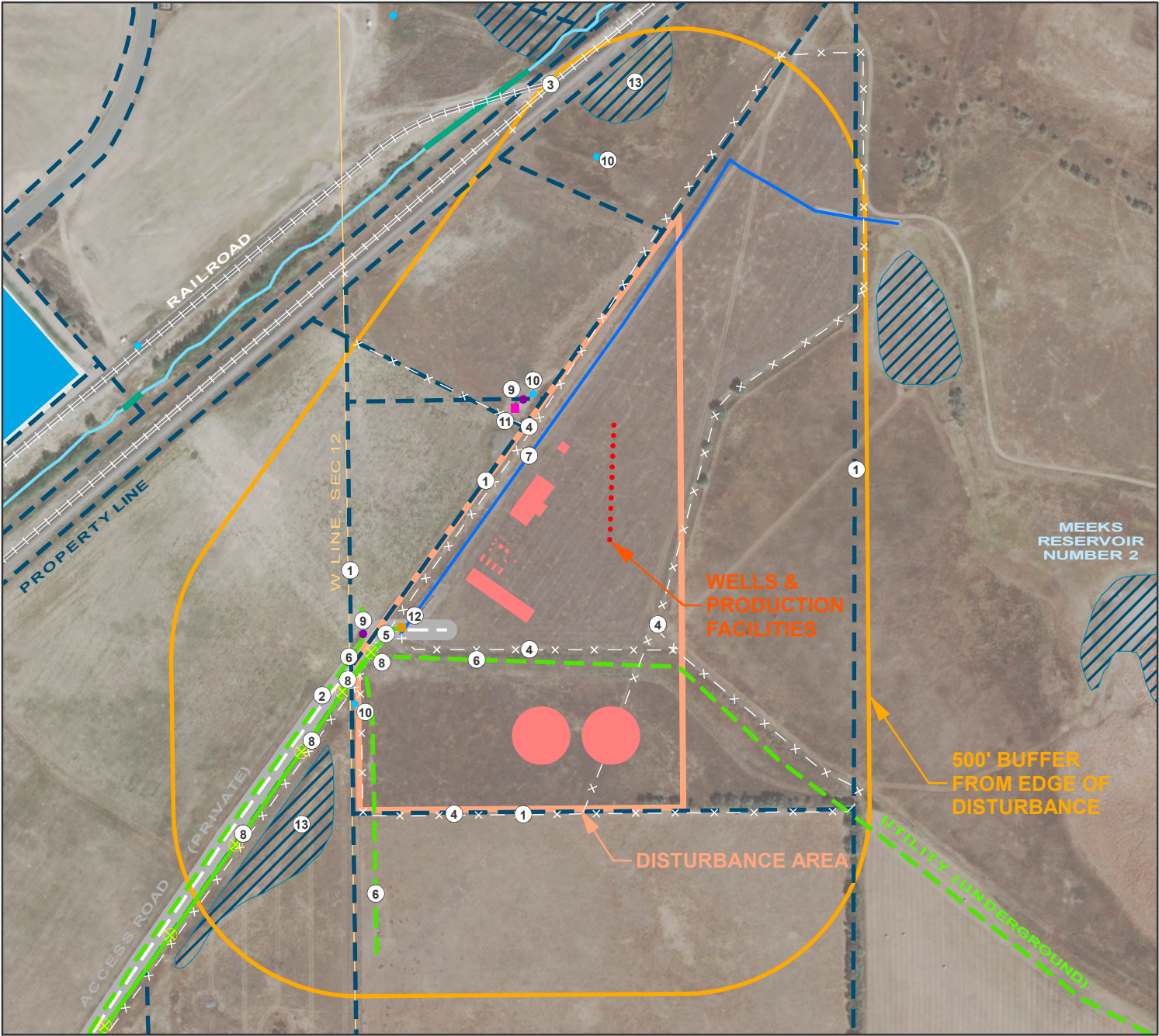


Location Drawing

Extraction Oil & Gas; Duck Club Well Pad

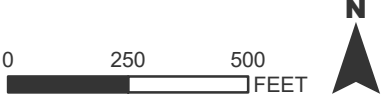




Legend			
● Proposed Wells	— Section Lines	— Irrigation	■ Building Units
■ Production Facilities	— Roads	⊗ Utility Poles	■ Buildings
— Disturbance Area	— Railroads	● Manholes	■ Dry Ponds
— 500' Buffer	x Fence Lines	● Water Wells	— Ditches
— Property Lines	— Utilities (Above Ground)	■ Pump House	— Culverts
	— Utilities (Below Ground)	■ Utility Cabinets	

Improvements & Cultural Features**:	
1. Property Lines: ± 100' NW, ± 125' S, ± 300' W, ± 650' E	12. Pump House: ± 210' SW
2. Road: ± 285' SW	13. Dry Ponds: ± 570' SW, ± 805' NW
3. Railroad: ± 745' NW	
4. Fence Lines: ± 60' S, ± 80' NW, ± 130' S, ± 150' SE	
5. Above Ground Utility: ± 315' SW	
6. Below Ground Utilities: ± 95' S, ± 280' SW, ± 345' SW	
7. Irrigation: ± 50' NW	
8. Utility Poles: ± 315' SW, ± 445' SW, ± 640' SW, ± 935' SW	
9. Manhole: ± 155' NW, ± 305' SW	
10. Water Wells: ± 150' NW, ± 455' SW, ± 715' N	
11. Utility Cabinet: ± 145' NW	

Surface Use: The proposed project is located within agricultural lands (Adams County Zoning A-3). The location is primarily dominated by existing dryland agriculture pasture.

Surface Area: The approximate area of the proposed disturbance area is 20 acres



PREPARED BY: 	FIELD DATE: 10/12/17	PARCEL ID: 0156900000278	PREPARED FOR: 
	DRAWING DATE: 02/13/18	SURFACE LOCATION: NW 1/4, SW 1/4, SEC 12, T 1S, R 66W ADAMS COUNTY, COLORADO	
	DRAWN BY: SKY		
	CHECKED BY: AMM		

**Publicly available data sources have not been independently verified by Manhard Consulting, Ltd.
**All distances measured from nearest well head or production facility