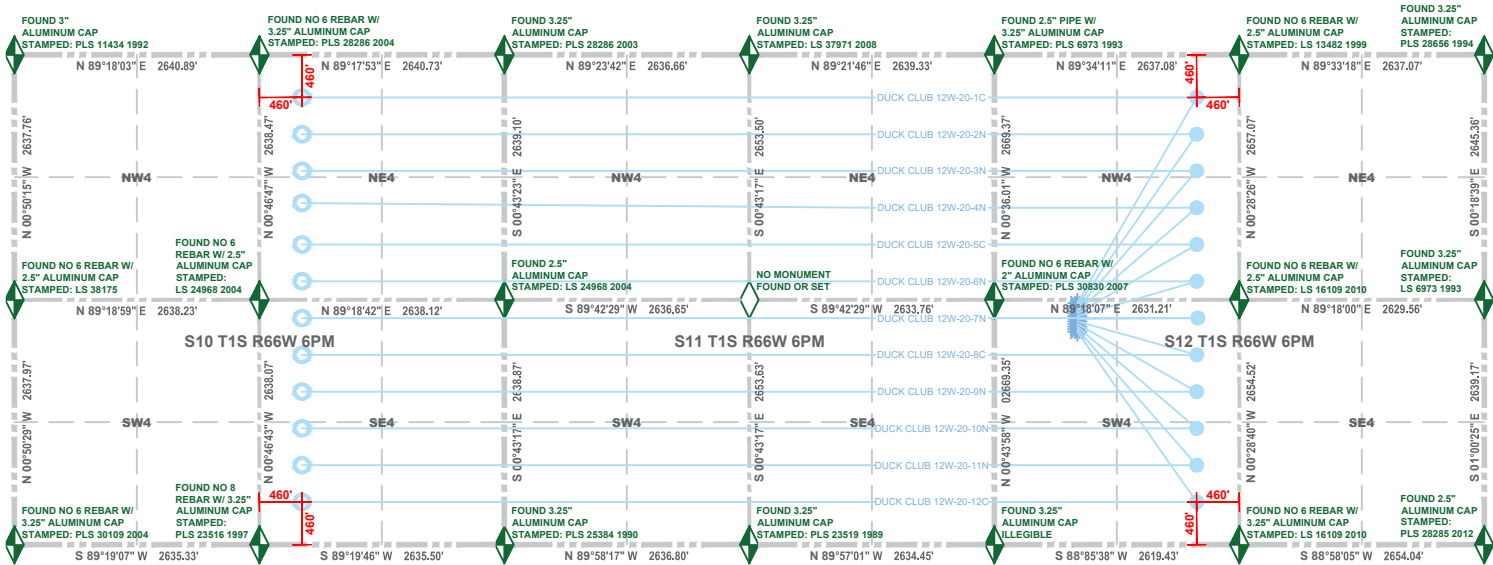


# Multi-Well Plan

## Extraction Oil & Gas; Duck Club Well Pad



WELL LOCATION	HEEL	TOE	SURFACE HOLE	LANDING POINT	BOTTOM HOLE
DUCK CLUB 12W-20-1C	N-S: 460 FNL E-W: 2176 FWL S12	N-S: 460 FNL E-W: 2180 FEL S10	LAT N39.97945° LONG W104.73093°	LAT N39.98567° LONG W104.72566°	LAT N39.98562° LONG W104.76003°
DUCK CLUB 12W-20-2N	N-S: 860 FNL E-W: 2176 FWL S12	N-S: 856 FNL E-W: 2180 FEL S10	LAT N39.97937° LONG W104.73093°	LAT N39.98457° LONG W104.72566°	LAT N39.98453° LONG W104.76002°
DUCK CLUB 12W-20-3N	N-S: 1260 FNL E-W: 2174 FWL S12	N-S: 1252 FNL E-W: 2180 FEL S10	LAT N39.97930° LONG W104.73094°	LAT N39.98348° LONG W104.72566°	LAT N39.98345° LONG W104.76002°
DUCK CLUB 12W-20-4N	N-S: 1660 FNL E-W: 2174 FWL S12	N-S: 1598 FNL E-W: 2179 FEL S10	LAT N39.97922° LONG W104.73094°	LAT N39.98238° LONG W104.72566°	LAT N39.98250° LONG W104.76001°
DUCK CLUB 12W-20-5C	N-S: 2060 FNL E-W: 2173 FWL S12	N-S: 2044 FNL E-W: 2179 FEL S10	LAT N39.97914° LONG W104.73095°	LAT N39.98128° LONG W104.72566°	LAT N39.98127° LONG W104.76000°
DUCK CLUB 12W-20-6N	N-S: 2460 FNL E-W: 2173 FWL S12	N-S: 2440 FNL E-W: 2178 FEL S10	LAT N39.97907° LONG W104.73095°	LAT N39.98018° LONG W104.72566°	LAT N39.98019° LONG W104.75999°
DUCK CLUB 12W-20-7N	N-S: 2460 FSL E-W: 2171 FWL S12	N-S: 2440 FSL E-W: 2178 FEL S10	LAT N39.97899° LONG W104.73095°	LAT N39.97909° LONG W104.72566°	LAT N39.97910° LONG W104.75999°
DUCK CLUB 12W-20-8C	N-S: 2060 FSL E-W: 2169 FWL S12	N-S: 2044 FSL E-W: 2178 FEL S10	LAT N39.97891° LONG W104.73096°	LAT N39.97799° LONG W104.72566°	LAT N39.97801° LONG W104.75998°
DUCK CLUB 12W-20-9N	N-S: 1660 FSL E-W: 2167 FWL S12	N-S: 1648 FSL E-W: 2177 FEL S10	LAT N39.97884° LONG W104.73096°	LAT N39.97690° LONG W104.72566°	LAT N39.97692° LONG W104.75997°
DUCK CLUB 12W-20-10N	N-S: 1260 FSL E-W: 2165 FWL S12	N-S: 1252 FSL E-W: 2177 FEL S10	LAT N39.97876° LONG W104.73097°	LAT N39.97580° LONG W104.72566°	LAT N39.97584° LONG W104.75996°
DUCK CLUB 12W-20-11N	N-S: 860 FSL E-W: 2163 FWL S12	N-S: 856 FSL E-W: 2177 FEL S10	LAT N39.97868° LONG W104.73097°	LAT N39.97470° LONG W104.72567°	LAT N39.97475° LONG W104.75996°
DUCK CLUB 12W-20-12C	N-S: 460 FSL E-W: 2161 FWL S12	N-S: 460 FSL E-W: 2176 FEL S10	LAT N39.97860° LONG W104.73098°	LAT N39.97360° LONG W104.72567°	LAT N39.97366° LONG W104.75995°

LEGEND

SURFACE HOLE LOCATION

LANDING POINT

BOTTOM HOLE LOCATION

WELL DIRECTION

FOUND MONUMENT

CALCULATED POSITION

PREPARED BY:  
 **Manhard**  
CONSULTING

FIELD DATE:  
12/12/17  
DRAWING DATE:  
03/27/18  
DRAWN BY:  
SKY  
CHECKED BY:  
AMM

PARCEL ID:  
0156900000278  
SURFACE LOCATION:  
NW 1/4, SW 1/4, SEC 12, T 1S, R 66W  
ADAMS COUNTY, COLORADO

PREPARED FOR:  
 **EXTRACTION**  
Oil & Gas