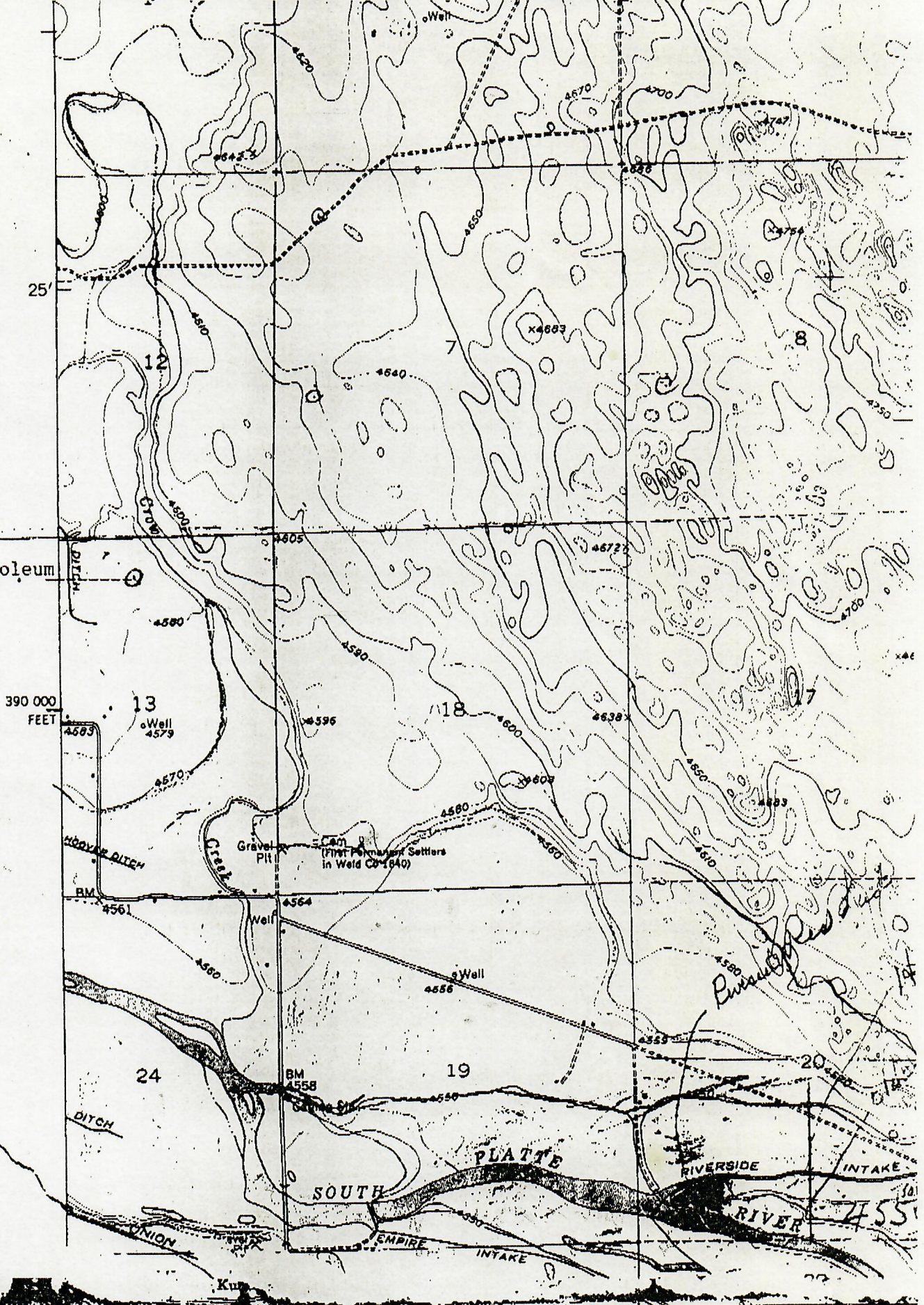


Costilla Petroleum  
Lohr 13-2



40°22'30" 104°30' R. 64 W. 12 280 000 FEET 0.8 MI. TO U. S. 34 R. 63 W. 27'30"

Mapped, edited and published by the Geological Survey  
as part of the Department of the Interior program  
for the development of the Missouri River Basin

Control by USGS and USC&GS

Topography from aerial photographs by multiplex methods

UP NEW SCHOOL

