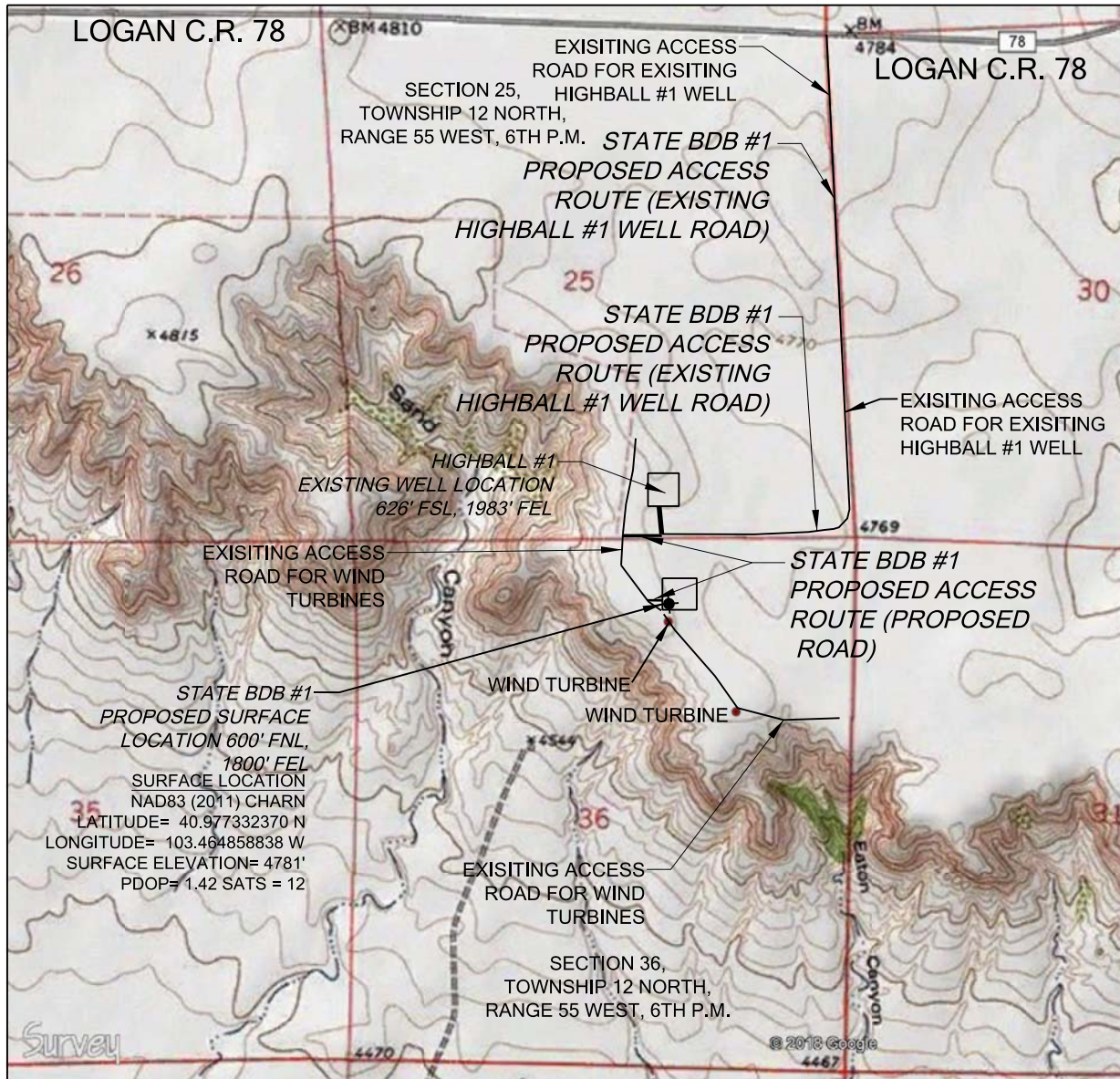


ACCESS ROAD MAP: STATE BDB #1

SECTION 36, TOWNSHIP 12 NORTH, RANGE 55 WEST, 6TH P.M.



NOTES:

- REFERENCE POINT OR BENCH MARK - ORTHOMETRIC HEIGHTS (ELEVATIONS) SHOWN AT THE WELL HEAD, AND THE LAND SURVEY CONTROL, ARE BASED ON GPS-RTK VALUES DERIVED FROM NGS BENCHMARK L 4 Z PID NO. AB4825, HAVING A PUBLISHED ELEVATION OF 4813 FEET ABOVE SEA LEVEL.
LAT = N 40°59'34.18470"
LONG = W 103°28'37.18624"
- BASIS OF BEARINGS: ALL BEARINGS ARE BASED ON THE LINE CONNECTING THE NORTHWEST CORNER OF SECTION 36, TOWNSHIP 12 NORTH, RANGE 55 WEST, OF THE 6TH PRINCIPAL MERIDIAN AND THE NORTHEAST CORNER OF SAID SECTION 36, BEING A GRID BEARING OF NORTH 87°11'30" EAST A GROUND DISTANCE OF 5291.11' FEET AS OBTAINED FROM A GLOBAL POSITIONING SYSTEM (GPS) SURVEY BASED ON THE COLORADO HIGH ACCURACY REFERENCE NETWORK (CHARN). SAID GRID BEARING IS NAD 83 (2011) COLORADO STATE PLANE ZONE 501.
- ALL DISTANCES SHOWN ARE GROUND DISTANCE AND NOT SCALED DISTANCE, AS MEASURED IN THE FIELD, WITH TIES TO WELLS AND BOTTOM HOLES MEASURED AT A PERPENDICULAR DISTANCE TO SECTION LINES.
- SURFACE LOCATION TO BE 1,800' FROM THE EAST & 600' FROM THE NORTH LINE.
- DIRECTIONS FROM HIGHWAY 138 AND LOGAN COUNTY ROAD 78 GO WEST 19 MILES ON COUNTY ROAD 78 TO A FARM TRAIL ROAD BEARING SOUTH, FOLLOW FARM TRAIL SOUTH 1 MILE TO THE NORTHEAST CORNER OF SECTION 36. SEE NOTE 4 FOR LAYOUT.

NOTE: THIS WELL LOCATION CERTIFICATE IS NOT INTENDED TO BE A MONUMENTED LAND SURVEY OR DOES IT MEET THE NECESSARY REQUIREMENTS OF A LAND SURVEY PLAT.

CERTIFICATE OF SURVEYOR

I, CARL JOHN GILBERT, PLS 38287, FOR AND ON BEHALF OF WILDCAT SURVEYING, HEREBY CERTIFY THAT THE ABOVE WELL CERTIFICATE WAS PREPARED FROM FIELD NOTES AND DATA FROM THE LAND SURVEY MADE BY ME OR UNDER MY DIRECT SUPERVISION ON JULY 12, 2018 AND THAT IT CORRECTLY DEPICTS THE LOCATION OF THE STATE BDB #1 WELL IN SECTION 36, TOWNSHIP 12 NORTH, RANGE 55 WEST OF THE 6TH PRINCIPAL MERIDIAN, IN LOGAN COUNTY, COLORADO.

Carl John Gilbert

CARL JOHN GILBERT
PROFESSIONAL LAND SURVEYOR
COLORADO REGISTRATION NUMBER 38287



PREPARED BY:

Wildcat Surveying
307 Church Street,
Harrisburg NE 68345
Phone: 308-279-2072
www.wildcatsurveying.com



FIELD DATE:

07-12-2018

WELL NAME:

STATE BDB #1

OPERATOR:

H&M PETROLEUM CORPORATION

DRAWING DATE:

07-12-2018

SURFACE LOCATION:

SECTION 36, TOWNSHIP 12 NORTH,
RANGE 55 WEST OF THE 6TH P.M.
LOGAN COUNTY, COLORADO

BY:

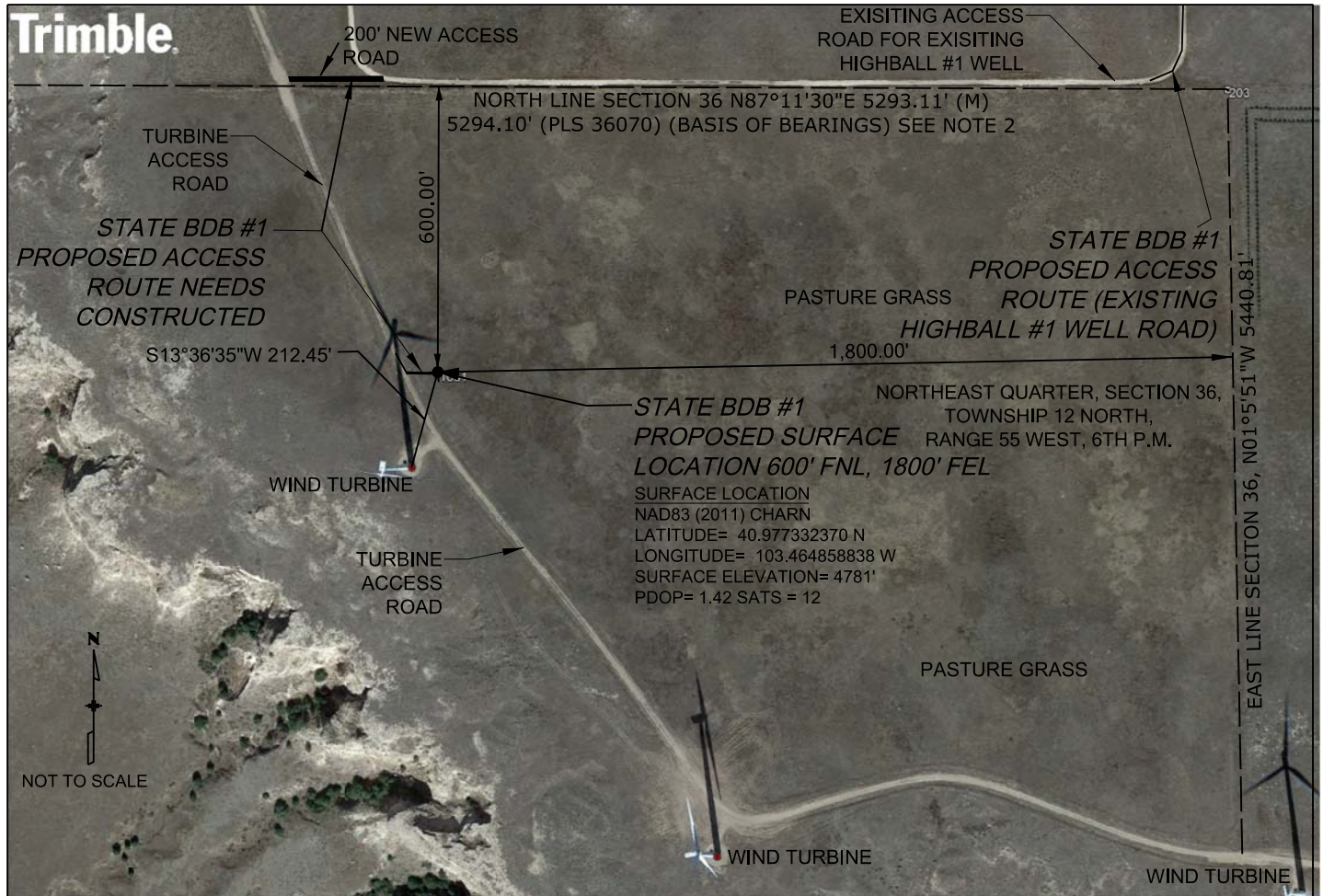
CJG

CHECKED:

CJG

ACCESS ROAD MAP: STATE BDB #1

SECTION 36, TOWNSHIP 12 NORTH, RANGE 55 WEST, 6TH P.M.



ACCESS ROAD AERIAL DETAIL

NOTES:

- REFERENCE POINT OR BENCH MARK - ORTHOMETRIC HEIGHTS (ELEVATIONS) SHOWN AT THE WELL HEAD, AND THE LAND SURVEY CONTROL, ARE BASED ON GPS-RTK VALUES DERIVED FROM NGS BENCHMARK L 4 Z PID NO. AB4825, HAVING A PUBLISHED ELEVATION OF 4813 FEET ABOVE SEA LEVEL.
LAT = N 40°59'34.18470"
LONG = W 103°28'37.18624"
- BASIS OF BEARINGS: ALL BEARINGS ARE BASED ON THE LINE CONNECTING THE NORTHWEST CORNER OF SECTION 36, TOWNSHIP 12 NORTH, RANGE 55 WEST, OF THE 6TH PRINCIPAL MERIDIAN AND THE NORTHEAST CORNER OF SAID SECTION 36, BEING A GRID BEARING OF NORTH 87°11'30" EAST A GROUND DISTANCE OF 5291.11' FEET AS OBTAINED FROM A GLOBAL POSITIONING SYSTEM (GPS) SURVEY BASED ON THE COLORADO HIGH ACCURACY REFERENCE NETWORK (CHARN). SAID GRID BEARING IS NAD 83 (2011) COLORADO STATE PLANE ZONE 501.
- ALL DISTANCES SHOWN ARE GROUND DISTANCE AND NOT SCALED DISTANCE, AS MEASURED IN THE FIELD, WITH TIES TO WELLS AND BOTTOM HOLES MEASURED AT A PERPENDICULAR DISTANCE TO SECTION LINES.
- SURFACE LOCATION TO BE 1,800' FROM THE EAST & 600' FROM THE NORTH LINE.
- DIRECTIONS FROM HIGHWAY 138 AND LOGAN COUNTY ROAD 78 GO WEST 19 MILES ON COUNTY ROAD 78 TO A FARM TRAIL ROAD BEARING SOUTH, FOLLOW FARM TRAIL SOUTH 1 MILE TO THE NORTHEAST CORNER OF SECTION 36. SEE NOTE 4 FOR LAYOUT.

NOTE: THIS WELL LOCATION CERTIFICATE IS NOT INTENDED TO BE A MONUMENTED LAND SURVEY OR DOES IT MEET THE NECESSARY REQUIREMENTS OF A LAND SURVEY PLAT.

CERTIFICATE OF SURVEYOR

I, CARL JOHN GILBERT, PLS 38287, FOR AND ON BEHALF OF WILDCAT SURVEYING, HEREBY CERTIFY THAT THE ABOVE WELL CERTIFICATE WAS PREPARED FROM FIELD NOTES AND DATA FROM THE LAND SURVEY MADE BY ME OR UNDER MY DIRECT SUPERVISION ON JULY 12, 2018 AND THAT IT CORRECTLY DEPICTS THE LOCATION OF THE STATE BDB #1 WELL IN SECTION 36, TOWNSHIP 12 NORTH, RANGE 55 WEST OF THE 6TH PRINCIPAL MERIDIAN, IN LOGAN COUNTY, COLORADO.

CARL JOHN GILBERT
PROFESSIONAL LAND SURVEYOR
COLORADO REGISTRATION NUMBER 38287



PREPARED BY:

Wildcat Surveying
307 Church Street,
Harrisburg NE 68345
Phone: 308-279-2072
www.wildcatsurveying.com



FIELD DATE:

07-12-2018

DRAWING DATE:

07-12-2018

BY:

CJG

CHECKED:

CJG

WELL NAME:

STATE BDB #1

OPERATOR:

H&M PETROLEUM CORPORATION

SURFACE LOCATION:

SECTION 36, TOWNSHIP 12 NORTH,
RANGE 55 WEST OF THE 6TH P.M.
LOGAN COUNTY, COLORADO