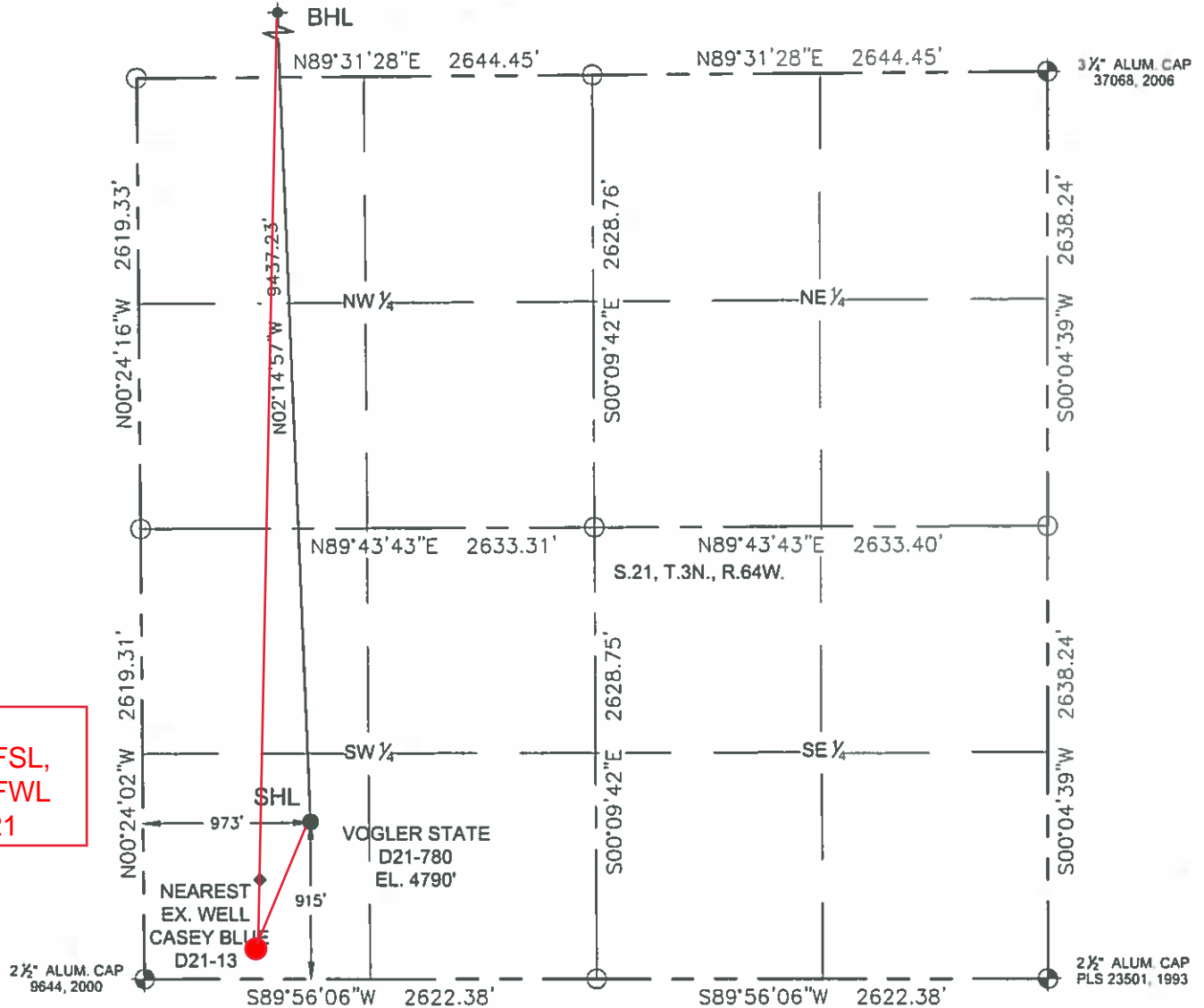


# WELL LOCATION EXHIBIT

SECTION: 21  
TOWNSHIP: 3N  
RANGE: 64W

THIS MAP DOES NOT REPRESENT A BOUNDARY SURVEY



TPZ:  
200' FSL,  
660' FWL  
Sec 21



In accordance with a request from Anne Duck with Noble Energy Inc. Petroleum Field Services, LLC has determined the surface location of the VOGLER STATE D21-780 to be 973' from the WEST line and 915' from the SOUTH line as measured at right angles from the section line of Section 21, Township 3 North, Range 64 West of the Sixth Principal Meridian, County of Weld, State of Colorado, and the bottom hole to be 660' from the WEST line and 200' from the NORTH line as measured at right angles from the section line of Section 16, Township 3 North, Range 64 West of the Sixth Principal Meridian, County of Weld, State of Colorado.

## LEGEND

- = FOUND MONUMENT
- = CALCULATED POSITION
- = PROPOSED WELL
- ◆ = BOTTOM HOLE
- ◆ = EXISTING WELL

I hereby state that this Well Location Exhibit was prepared by me, or under my direct supervision, that the fieldwork was completed on 03/27/18 for and on behalf of Noble Energy Inc., that this is not a Land Survey Plat or an Improvement Survey Plat, and that it is not to be relied upon for the establishment of fence, building, or other future improvement lines.

- Notes:
- 1) Bearings shown are Grid Bearings of the Colorado State Plane Coordinate System, North Zone, North American Datum 1983/2011. The lineal dimensions as shown herein are grid distances based upon the "U.S. Survey Foot." To get ground distances multiply shown distance by 1.000270632.
  - 2) Ground elevations are based on an observed GPS elevation (NAVD 1988 DATUM).
  - 3) NEAREST EXISTING WELL IN SECTION 21 IS: CASEY BLUE D21-13, 447' SW
  - 4) IMPROVEMENTS: See LOCATION DRAWING exhibit for all visible improvements within 500' of disturbed area.
  - 5) SURFACE USE "RANGELAND"
  - 6) INSTRUMENT OPERATOR: ALAN HNIZDO

Note:  
According to Colorado law, you must commence any legal action based upon any defect in this W.L.C. within three years after you first discover such defect. In no event, may any action based upon any defect in this survey be commenced more than ten years after the date of this certification shown hereon. (13-80-105 C.R.S.)

NEAREST CULTURAL ITEMS (GIS LAND POSITION):  
BUILDING 5008' NW  
BUILDING UNIT 5242' NW  
HIGH OCCUPANCY BUILDING UNIT 5280'+  
DESIGNATED OUTSIDE ACTIVITY AREA 5280'+  
PUBLIC ROAD WCR 32 5257' NW  
ABOVE GROUND UTILITY 3290' W  
RAILROAD 5280'+  
PROPERTY LINE 915' S

SURFACE LOCATION:  
LATITUDE: 40.20624°N  
LONGITUDE: 104.56223°W  
PDOP: 1.3  
ELEV: 4790'  
1/4 SW 1/4 SW 1/4

BOTTOM HOLE:  
LATITUDE: 40.23213°N  
LONGITUDE: 104.56320°W

SHEET 1 OF 2

FIELD  
DATE:  
03-27-18

DRAWING  
DATE:  
07-13-18

DRAWN BY:  
MJE

CHECKED BY:  
RMC

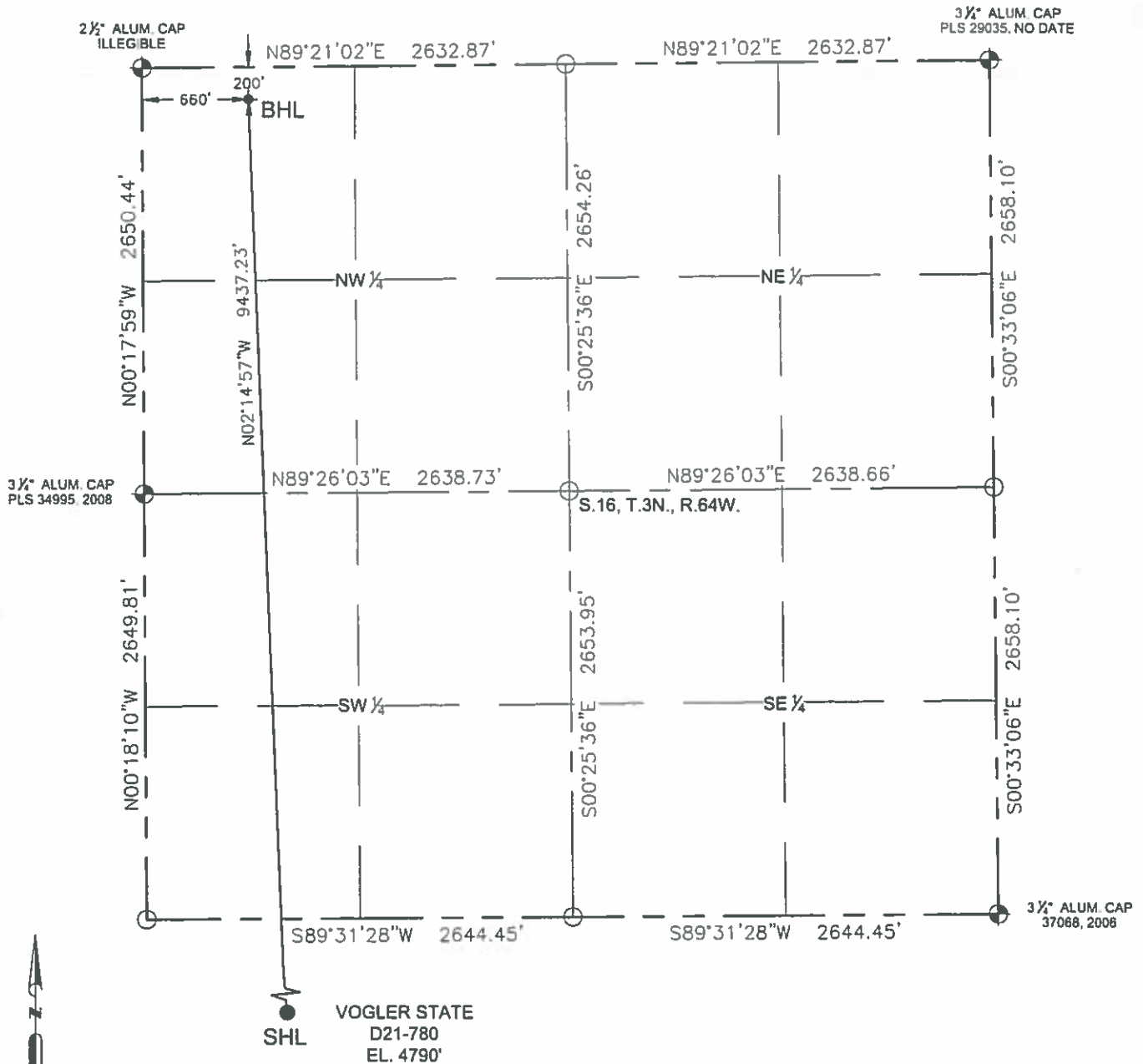


MICHAEL L. POOL, PLS 38304  
COLORADO LICENSED PROFESSIONAL LAND SURVEYOR  
FOR AND ON BEHALF OF P.F.S., LLC  
d.b.a ASCENT GEOMATICS SOLUTIONS

# WELL LOCATION EXHIBIT

THIS MAP DOES NOT REPRESENT A BOUNDARY SURVEY

SECTION: 21  
TOWNSHIP: 3N  
RANGE: 64W



SCALE: 1" = 1000'

## LEGEND

- = FOUND MONUMENT
- = CALCULATED POSITION
- = PROPOSED WELL
- ◆ = BOTTOM HOLE
- ◆ = EXISTING WELL

SHEET 2 OF 2

FIELD  
DATE:  
03-27-18

DRAWING  
DATE:  
07-13-18

DRAWN BY:  
MJE

CHECKED BY:  
RMC

Note:  
According to Colorado law, you must commence any legal action based upon any defect in this W.L.C. within three years after you first discover such defect. In no event, may any action based upon any defect in this survey be commenced more than ten years after the date of this certification shown hereon. (13-80-105 C.R.S.)



MICHAEL L. POOL, PLS 38304  
COLORADO LICENSED PROFESSIONAL LAND SURVEYOR  
FOR AND ON BEHALF OF P.F.S., LLC  
d b a ASCENT GEOMATICS SOLUTIONS