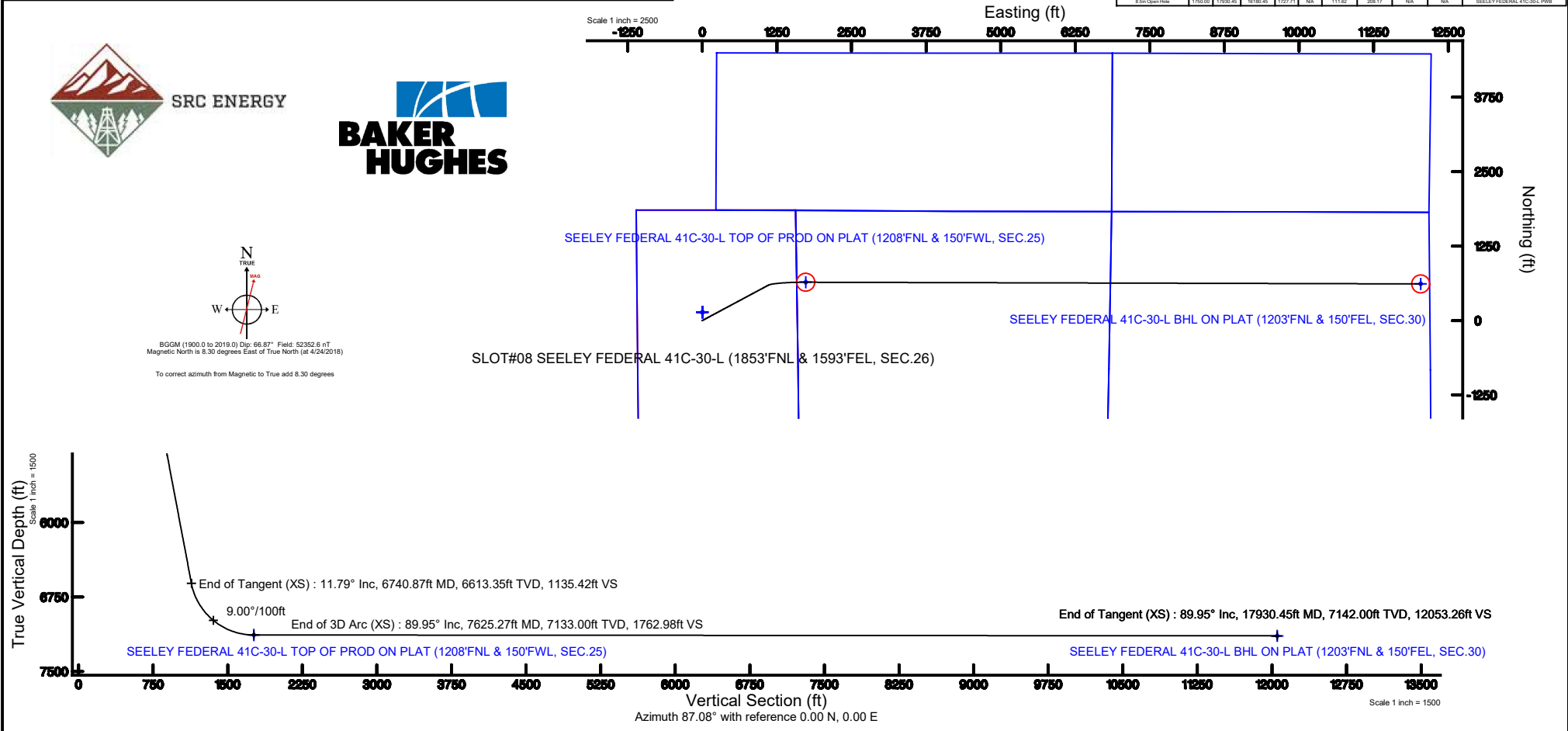


<h1 style="margin: 0;">SRC ENERGY</h1>	
Location: COLORADO	Slot: SLOT#08 SEELEY FEDERAL 41C-30-L (1853°FNL & 1593°FEL, SEC.26)
Field: WELD COUNTY (NAD83,TRUE NORTH)	Well: SEELEY FEDERAL 41C-30-L
Facility: SEC.26-T06N-R66W	Wellbore: SEELEY FEDERAL 41C-30-L PWB
<div style="display: flex; justify-content: space-between;"> <div> <p><span style="color: red;">Plot reference wellpath is SEELEY FEDERAL 41C-30-L(REV-A.0) PWP</span></p> <p>True vertical depths are referenced to PROPETRO 12 (4') (RXB)</p> <p>Measured depths are referenced to PROPETRO 12 (4') (RXB)</p> <p>PROPETRO 12 (4') (RXB) to Mean Sea Level: 4701 feet</p> <p>Mean Sea Level to Mud line (At Slot: SLOT#08 SEELEY FEDERAL 41C-30-L (1853°FNL &amp; 1593°FEL, SEC.26)): 0 feet</p> <p>Coordinates are in feet referenced to Slot</p> </div> <div> <p>Grid System: NAD83 / Lambert Colorado SP, Northern Zone (501), US feet</p> <p>* = Wellpath was transformed from a different geoidic datum</p> <p>North Reference: True north</p> <p>Scale: True distance</p> <p>Depths are in feet</p> <p>Created by: doddanna on 2018-05-10</p> <p>Database: WellArchitectDB</p> </div> </div>	

Well Profile Data								
Design Comment	MD (ft)	Inc (°)	Az (°)	TVD (ft)	Local N (ft)	Local E (ft)	DLS (°/100ft)	VS (ft)
Tie On	4.00	0.000	61.799	4.00	0.00	0.00	0.00	0.00
End of Tangent	300.00	0.000	61.799	300.00	0.00	0.00	0.00	0.00
End of Build (XS)	889.32	11.786	61.799	885.17	28.54	53.23	2.00	54.62
End of Tangent (XS)	6740.87	11.786	61.799	6613.35	593.39	1106.60	0.00	1135.42
End of 3D Arc (XS)	7625.27	89.950	90.158	7133.00	643.12	1732.44	9.00	1762.98
End of Tangent (XS)	17930.45	89.950	90.158	7142.00	614.66	12037.58	0.00	12053.26

Location Information						
Facility Name			Grid East (US R)	Grid North (US R)	Latitude	Longitude
SEC 26-T00N-R66W			3211308.457	1412009.161	40°27'42.7377N	104°44'26.1177W
Bmt	Local N (ft)	Local E (ft)	Grid East (US R)	Grid North (US R)	Latitude	Longitude
SLOT908 SEELEY FEDERAL 41C-30-L (1853FNL & 1593FTEL SEC.26)	-139.34	-1.10	3211308.508	1411869.224	40°27'41.5967N	104°44'26.1317W
PROPERTO 12 (H) (R08) to Mud line (At Sct. SLOT908 SEELEY FEDERAL 41C-30-L (1853FNL & 1593FTEL SEC.26))					470.18	
Mean Sea Level to Mud line (At Sct. SLOT908 SEELEY FEDERAL 41C-30-L (1853FNL & 1593FTEL SEC.26))					08	
PROPERTO 12 (H) (R08) to Mean Sea Level					470.18	
Survey Program						
Start MD (ft)	End MD (ft)	Tool	Model	Log Name/Comment	Wellbore	
4.00	1750.00	BHI NavTrak	BHI NavTrak (Rotating+Axial Corr)		SEELEY FEDERAL 41C-30-L PWB	
1750.00	17930.45	BHI AutoTrak Curve	BHI AutoTrak Curve (IFR1, Short)		SEELEY FEDERAL 41C-30-L PWB	

[illegible]

SEELEY\_FEDERAL\_41C-30-L\_REV-A.0\_\_PWP.las

~VERSION INFORMATION

VERS. 2.0 : CWLS LOG ASCII STANDARD-VERSION 2.0

WRAP. NO : ASCII DATA SECTION CONTAINS ONE ROW PER WELLPATH STATION

~WELL INFORMATION

#MNEM	.UNITS	DATA	:DESCRIPTION
#----	.-----	----	:-----
STRT	.ft	0.00	:START MD
STOP	.ft	17930.45	:STOP MD
STEP	.ft	0.0	:STEP (non-uniform increment)
NULL	.	-999.99	:NULL
COMP	.	SRC ENERGY	:OPERATOR
WELL	.	SEELEY FEDERAL 41C-30-L	:WELL
FLD	.	WELD COUNTY (NAD83,TRUE NORTH)	:FIELD
LOC	.	COLORADO	:AREA (aka: Location)
CNTY	.	N/A	:COUNTY
STAT	.	N/A	:STATE
CTRY	.	N/A	:COUNTRY
SRVC	.	Baker Hughes	:CONTRACTOR
DATE	.	04/25/2018	:LOG REV DATE
API	.		:API NUMBER

~OTHER INFORMATION

#Software: WellArchitect(R) Version 5.0

#MNEM	.UNITS	DATA	:DESCRIPTION
#----	.-----	----	:-----
WPTYPE	.	PLANNED WELLPATH	:WELLPATH TYPE
FACILITY	.	SEC.26-T06N-R66W	:FACILITY
SLOT	.	SLOT#08 SEELEY FEDERAL 41C-30-L (1853'FNL & 1593'FEL, SEC.26):SLOT	
WELLBORE	.	SEELEY FEDERAL 41C-30-L PWB	:WELLBORE
WELLPATH	.	SEELEY FEDERAL 41C-30-L(REV-A.0) PWP	:WELLPATH
MDREFPT	.	PROPETRO 12 (4') (RKB)	:MD REFERENCE POINT
TVDREFPT	.	PROPETRO 12 (4') (RKB)	:TVD REFERENCE POINT
LCLREFPT	.	Slot	:LOCAL COORDINATE
REFERENCE PT			
VSAZIMUTH.deg		87.08	:VERTICAL SECTION
AZIMUTH			
VSORIGN	.ft	0.00	:VERTICAL SECTION ORIGIN
NORTH			
VSORIGE	.ft	0.00	:VERTICAL SECTION ORIGIN
EAST			

~CURVE (WELLPATH) INFORMATION

#MNEM	.UNITS	:DESCRIPTION
#----	.-----	:-----
DEPT	.ft	:MEASURED DEPTH

## SEELEY\_FEDERAL\_41C-30-L\_REV-A.0\_\_PWP.las

INC .deg :INCLINATION  
 AZI .deg :AZIMUTH  
 TVD .ft :TRUE VERTICAL DEPTH  
 SECT .ft :CROSS SECTION (CURTAIN/VERTICAL)  
 LOCALN .ft :LOCAL NORTH  
 LOCALE .ft :LOCAL EAST  
 LAT .deg :LATITUDE  
 LONG .deg :LONGITUDE  
 DLS .deg/100ft :DOGLEG SEVERITY

## ~ASCII DATA

0.00	0.00	61.80	0.00	0.00	0.00	0.00	0.00	40.4614989
-104.7405919	0.00							
4.00	0.00	61.80	4.00	0.00	0.00	0.00	0.00	40.4614989
-104.7405919	0.00							
104.00	0.00	61.80	104.00	0.00	0.00	0.00	0.00	40.4614989
-104.7405919	0.00							
204.00	0.00	61.80	204.00	0.00	0.00	0.00	0.00	40.4614989
-104.7405919	0.00							
300.00	0.00	61.80	300.00	0.00	0.00	0.00	0.00	40.4614989
-104.7405919	0.00							
304.00	0.08	61.80	304.00	0.00	0.00	0.00	0.00	40.4614989
-104.7405919	2.00							
404.00	2.08	61.80	403.98	1.71	0.89	1.66		40.4615013
-104.7405860	2.00							
504.00	4.08	61.80	503.83	6.57	3.43	6.40		40.4615083
-104.7405690	2.00							
604.00	6.08	61.80	603.43	14.57	7.62	14.20		40.4615198
-104.7405409	2.00							
704.00	8.08	61.80	702.66	25.72	13.44	25.06		40.4615358
-104.7405019	2.00							
804.00	10.08	61.80	801.40	39.99	20.90	38.97		40.4615562
-104.7404519	2.00							
889.32	11.79	61.80	885.17	54.62	28.54	53.23		40.4615772
-104.7404007	2.00							
904.00	11.79	61.80	899.54	57.33	29.96	55.87		40.4615811
-104.7403912	0.00							
1004.00	11.79	61.80	997.43	75.80	39.61	73.88		40.4616076
-104.7403265	0.00							
1104.00	11.79	61.80	1095.33	94.27	49.27	91.88		40.4616341
-104.7402618	0.00							
1204.00	11.79	61.80	1193.22	112.74	58.92	109.88		40.4616606
-104.7401971	0.00							
1304.00	11.79	61.80	1291.11	131.21	68.57	127.88		40.4616871
-104.7401324	0.00							
1404.00	11.79	61.80	1389.00	149.68	78.23	145.88		40.4617136
-104.7400677	0.00							
1504.00	11.79	61.80	1486.89	168.15	87.88	163.88		40.4617401

## SEELEY\_FEDERAL\_41C-30-L\_REV-A.0\_\_PWP.las

-104.7400030	0.00						
1604.00	11.79	61.80	1584.78	186.62	97.53	181.88	40.4617666
-104.7399383	0.00						
1704.00	11.79	61.80	1682.68	205.09	107.18	199.89	40.4617931
-104.7398736	0.00						
1804.00	11.79	61.80	1780.57	223.56	116.84	217.89	40.4618196
-104.7398089	0.00						
1904.00	11.79	61.80	1878.46	242.03	126.49	235.89	40.4618461
-104.7397442	0.00						
2004.00	11.79	61.80	1976.35	260.50	136.14	253.89	40.4618726
-104.7396795	0.00						
2104.00	11.79	61.80	2074.24	278.97	145.80	271.89	40.4618991
-104.7396149	0.00						
2204.00	11.79	61.80	2172.13	297.44	155.45	289.89	40.4619256
-104.7395502	0.00						
2304.00	11.79	61.80	2270.03	315.91	165.10	307.90	40.4619521
-104.7394855	0.00						
2404.00	11.79	61.80	2367.92	334.38	174.75	325.90	40.4619786
-104.7394208	0.00						
2504.00	11.79	61.80	2465.81	352.86	184.41	343.90	40.4620051
-104.7393561	0.00						
2604.00	11.79	61.80	2563.70	371.33	194.06	361.90	40.4620316
-104.7392914	0.00						
2704.00	11.79	61.80	2661.59	389.80	203.71	379.90	40.4620580
-104.7392267	0.00						
2804.00	11.79	61.80	2759.48	408.27	213.37	397.90	40.4620845
-104.7391620	0.00						
2904.00	11.79	61.80	2857.37	426.74	223.02	415.90	40.4621110
-104.7390973	0.00						
3004.00	11.79	61.80	2955.27	445.21	232.67	433.91	40.4621375
-104.7390326	0.00						
3104.00	11.79	61.80	3053.16	463.68	242.32	451.91	40.4621640
-104.7389679	0.00						
3204.00	11.79	61.80	3151.05	482.15	251.98	469.91	40.4621905
-104.7389032	0.00						
3304.00	11.79	61.80	3248.94	500.62	261.63	487.91	40.4622170
-104.7388385	0.00						
3404.00	11.79	61.80	3346.83	519.09	271.28	505.91	40.4622435
-104.7387739	0.00						
3504.00	11.79	61.80	3444.72	537.56	280.94	523.91	40.4622700
-104.7387092	0.00						
3604.00	11.79	61.80	3542.62	556.03	290.59	541.92	40.4622965
-104.7386445	0.00						
3704.00	11.79	61.80	3640.51	574.50	300.24	559.92	40.4623230
-104.7385798	0.00						
3804.00	11.79	61.80	3738.40	592.97	309.89	577.92	40.4623495
-104.7385151	0.00						
3904.00	11.79	61.80	3836.29	611.44	319.55	595.92	40.4623760

## SEELEY\_FEDERAL\_41C-30-L\_REV-A.0\_\_PWP.las

-104.7384504	0.00						
4004.00	11.79	61.80	3934.18	629.91	329.20	613.92	40.4624025
-104.7383857	0.00						
4104.00	11.79	61.80	4032.07	648.38	338.85	631.92	40.4624290
-104.7383210	0.00						
4204.00	11.79	61.80	4129.97	666.85	348.51	649.92	40.4624555
-104.7382563	0.00						
4304.00	11.79	61.80	4227.86	685.32	358.16	667.93	40.4624820
-104.7381916	0.00						
4404.00	11.79	61.80	4325.75	703.79	367.81	685.93	40.4625085
-104.7381269	0.00						
4504.00	11.79	61.80	4423.64	722.26	377.47	703.93	40.4625350
-104.7380622	0.00						
4604.00	11.79	61.80	4521.53	740.73	387.12	721.93	40.4625614
-104.7379975	0.00						
4704.00	11.79	61.80	4619.42	759.20	396.77	739.93	40.4625879
-104.7379328	0.00						
4804.00	11.79	61.80	4717.32	777.67	406.42	757.93	40.4626144
-104.7378681	0.00						
4904.00	11.79	61.80	4815.21	796.14	416.08	775.94	40.4626409
-104.7378035	0.00						
5004.00	11.79	61.80	4913.10	814.61	425.73	793.94	40.4626674
-104.7377388	0.00						
5104.00	11.79	61.80	5010.99	833.08	435.38	811.94	40.4626939
-104.7376741	0.00						
5204.00	11.79	61.80	5108.88	851.55	445.04	829.94	40.4627204
-104.7376094	0.00						
5304.00	11.79	61.80	5206.77	870.03	454.69	847.94	40.4627469
-104.7375447	0.00						
5404.00	11.79	61.80	5304.67	888.50	464.34	865.94	40.4627734
-104.7374800	0.00						
5504.00	11.79	61.80	5402.56	906.97	473.99	883.94	40.4627999
-104.7374153	0.00						
5604.00	11.79	61.80	5500.45	925.44	483.65	901.95	40.4628264
-104.7373506	0.00						
5704.00	11.79	61.80	5598.34	943.91	493.30	919.95	40.4628529
-104.7372859	0.00						
5804.00	11.79	61.80	5696.23	962.38	502.95	937.95	40.4628794
-104.7372212	0.00						
5904.00	11.79	61.80	5794.12	980.85	512.61	955.95	40.4629059
-104.7371565	0.00						
6004.00	11.79	61.80	5892.01	999.32	522.26	973.95	40.4629324
-104.7370918	0.00						
6104.00	11.79	61.80	5989.91	1017.79	531.91	991.95	40.4629589
-104.7370271	0.00						
6204.00	11.79	61.80	6087.80	1036.26	541.56	1009.96	40.4629854
-104.7369624	0.00						
6304.00	11.79	61.80	6185.69	1054.73	551.22	1027.96	40.4630118

## SEELEY\_FEDERAL\_41C-30-L\_REV-A.0\_\_PWP.las

-104.7368977	0.00						
6404.00	11.79	61.80	6283.58	1073.20	560.87	1045.96	40.4630383
-104.7368330	0.00						
6504.00	11.79	61.80	6381.47	1091.67	570.52	1063.96	40.4630648
-104.7367684	0.00						
6604.00	11.79	61.80	6479.36	1110.14	580.18	1081.96	40.4630913
-104.7367037	0.00						
6704.00	11.79	61.80	6577.26	1128.61	589.83	1099.96	40.4631178
-104.7366390	0.00						
6740.87	11.79	61.80	6613.35	1135.42	593.39	1106.60	40.4631276
-104.7366151	0.00						
6804.00	16.98	71.22	6674.49	1150.13	599.41	1121.02	40.4631441
-104.7365633	9.00						
6904.00	25.63	78.24	6767.58	1185.62	608.54	1156.09	40.4631692
-104.7364373	9.00						
7004.00	34.45	81.85	6854.07	1235.26	616.97	1205.36	40.4631923
-104.7362602	9.00						
7104.00	43.33	84.13	6931.83	1297.82	624.50	1267.62	40.4632130
-104.7360364	9.00						
7204.00	52.25	85.76	6998.95	1371.76	630.94	1341.33	40.4632306
-104.7357715	9.00						
7304.00	61.19	87.04	7053.76	1455.27	636.14	1424.69	40.4632449
-104.7354720	9.00						
7404.00	70.14	88.11	7094.93	1546.29	639.96	1515.62	40.4632554
-104.7351452	9.00						
7504.00	79.09	89.07	7121.44	1642.57	642.32	1611.91	40.4632618
-104.7347991	9.00						
7604.00	88.05	89.97	7132.63	1741.75	643.14	1711.18	40.4632641
-104.7344424	9.00						
7625.27	89.95	90.16	7133.00	1762.98	643.12	1732.44	40.4632640
-104.7343660	9.00						
7704.00	89.95	90.16	7133.07	1841.60	642.90	1811.17	40.4632634
-104.7340830	0.00						
7804.00	89.95	90.16	7133.16	1941.46	642.63	1911.17	40.4632626
-104.7337237	0.00						
7904.00	89.95	90.16	7133.24	2041.31	642.35	2011.17	40.4632618
-104.7333643	0.00						
8004.00	89.95	90.16	7133.33	2141.17	642.07	2111.17	40.4632610
-104.7330049	0.00						
8104.00	89.95	90.16	7133.42	2241.02	641.80	2211.17	40.4632603
-104.7326456	0.00						
8204.00	89.95	90.16	7133.51	2340.88	641.52	2311.17	40.4632595
-104.7322862	0.00						
8304.00	89.95	90.16	7133.59	2440.73	641.24	2411.17	40.4632587
-104.7319268	0.00						
8404.00	89.95	90.16	7133.68	2540.59	640.97	2511.17	40.4632579
-104.7315674	0.00						
8504.00	89.95	90.16	7133.77	2640.44	640.69	2611.17	40.4632571

## SEELEY\_FEDERAL\_41C-30-L\_REV-A.0\_\_PWP.las

-104.7312081	0.00						
8604.00	89.95	90.16	7133.85	2740.30	640.42	2711.17	40.4632563
-104.7308487	0.00						
8704.00	89.95	90.16	7133.94	2840.16	640.14	2811.17	40.4632556
-104.7304893	0.00						
8804.00	89.95	90.16	7134.03	2940.01	639.86	2911.17	40.4632548
-104.7301299	0.00						
8904.00	89.95	90.16	7134.12	3039.87	639.59	3011.17	40.4632540
-104.7297706	0.00						
9004.00	89.95	90.16	7134.20	3139.72	639.31	3111.17	40.4632532
-104.7294112	0.00						
9104.00	89.95	90.16	7134.29	3239.58	639.04	3211.17	40.4632524
-104.7290518	0.00						
9204.00	89.95	90.16	7134.38	3339.43	638.76	3311.17	40.4632516
-104.7286925	0.00						
9304.00	89.95	90.16	7134.47	3439.29	638.48	3411.17	40.4632508
-104.7283331	0.00						
9404.00	89.95	90.16	7134.55	3539.14	638.21	3511.17	40.4632500
-104.7279737	0.00						
9504.00	89.95	90.16	7134.64	3639.00	637.93	3611.17	40.4632492
-104.7276143	0.00						
9604.00	89.95	90.16	7134.73	3738.85	637.66	3711.17	40.4632484
-104.7272550	0.00						
9704.00	89.95	90.16	7134.82	3838.71	637.38	3811.16	40.4632476
-104.7268956	0.00						
9804.00	89.95	90.16	7134.90	3938.56	637.10	3911.16	40.4632468
-104.7265362	0.00						
9904.00	89.95	90.16	7134.99	4038.42	636.83	4011.16	40.4632460
-104.7261768	0.00						
10004.00	89.95	90.16	7135.08	4138.28	636.55	4111.16	40.4632452
-104.7258175	0.00						
10104.00	89.95	90.16	7135.16	4238.13	636.27	4211.16	40.4632444
-104.7254581	0.00						
10204.00	89.95	90.16	7135.25	4337.99	636.00	4311.16	40.4632436
-104.7250987	0.00						
10304.00	89.95	90.16	7135.34	4437.84	635.72	4411.16	40.4632428
-104.7247394	0.00						
10404.00	89.95	90.16	7135.43	4537.70	635.45	4511.16	40.4632420
-104.7243800	0.00						
10504.00	89.95	90.16	7135.51	4637.55	635.17	4611.16	40.4632412
-104.7240206	0.00						
10604.00	89.95	90.16	7135.60	4737.41	634.89	4711.16	40.4632404
-104.7236612	0.00						
10704.00	89.95	90.16	7135.69	4837.26	634.62	4811.16	40.4632395
-104.7233019	0.00						
10804.00	89.95	90.16	7135.78	4937.12	634.34	4911.16	40.4632387
-104.7229425	0.00						
10904.00	89.95	90.16	7135.86	5036.97	634.07	5011.16	40.4632379

## SEELEY\_FEDERAL\_41C-30-L\_REV-A.0\_\_PWP.las

-104.7225831	0.00						
11004.00	89.95	90.16	7135.95	5136.83	633.79	5111.16	40.4632371
-104.7222237	0.00						
11104.00	89.95	90.16	7136.04	5236.68	633.51	5211.16	40.4632363
-104.7218644	0.00						
11204.00	89.95	90.16	7136.13	5336.54	633.24	5311.16	40.4632355
-104.7215050	0.00						
11304.00	89.95	90.16	7136.21	5436.40	632.96	5411.16	40.4632347
-104.7211456	0.00						
11404.00	89.95	90.16	7136.30	5536.25	632.68	5511.16	40.4632338
-104.7207862	0.00						
11504.00	89.95	90.16	7136.39	5636.11	632.41	5611.16	40.4632330
-104.7204269	0.00						
11604.00	89.95	90.16	7136.47	5735.96	632.13	5711.16	40.4632322
-104.7200675	0.00						
11704.00	89.95	90.16	7136.56	5835.82	631.86	5811.16	40.4632314
-104.7197081	0.00						
11804.00	89.95	90.16	7136.65	5935.67	631.58	5911.16	40.4632306
-104.7193488	0.00						
11904.00	89.95	90.16	7136.74	6035.53	631.30	6011.16	40.4632297
-104.7189894	0.00						
12004.00	89.95	90.16	7136.82	6135.38	631.03	6111.16	40.4632289
-104.7186300	0.00						
12104.00	89.95	90.16	7136.91	6235.24	630.75	6211.15	40.4632281
-104.7182706	0.00						
12204.00	89.95	90.16	7137.00	6335.09	630.48	6311.15	40.4632272
-104.7179113	0.00						
12304.00	89.95	90.16	7137.09	6434.95	630.20	6411.15	40.4632264
-104.7175519	0.00						
12404.00	89.95	90.16	7137.17	6534.80	629.92	6511.15	40.4632256
-104.7171925	0.00						
12504.00	89.95	90.16	7137.26	6634.66	629.65	6611.15	40.4632248
-104.7168331	0.00						
12604.00	89.95	90.16	7137.35	6734.52	629.37	6711.15	40.4632239
-104.7164738	0.00						
12704.00	89.95	90.16	7137.44	6834.37	629.10	6811.15	40.4632231
-104.7161144	0.00						
12804.00	89.95	90.16	7137.52	6934.23	628.82	6911.15	40.4632223
-104.7157550	0.00						
12904.00	89.95	90.16	7137.61	7034.08	628.54	7011.15	40.4632214
-104.7153957	0.00						
13004.00	89.95	90.16	7137.70	7133.94	628.27	7111.15	40.4632206
-104.7150363	0.00						
13104.00	89.95	90.16	7137.78	7233.79	627.99	7211.15	40.4632197
-104.7146769	0.00						
13204.00	89.95	90.16	7137.87	7333.65	627.71	7311.15	40.4632189
-104.7143175	0.00						
13304.00	89.95	90.16	7137.96	7433.50	627.44	7411.15	40.4632181



## SEELEY\_FEDERAL\_41C-30-L\_REV-A.0\_\_PWP.las

-104.7139582	0.00						
13404.00	89.95	90.16	7138.05	7533.36	627.16	7511.15	40.4632172
-104.7135988	0.00						
13504.00	89.95	90.16	7138.13	7633.21	626.89	7611.15	40.4632164
-104.7132394	0.00						
13604.00	89.95	90.16	7138.22	7733.07	626.61	7711.15	40.4632155
-104.7128801	0.00						
13704.00	89.95	90.16	7138.31	7832.92	626.33	7811.15	40.4632147
-104.7125207	0.00						
13804.00	89.95	90.16	7138.40	7932.78	626.06	7911.15	40.4632139
-104.7121613	0.00						
13904.00	89.95	90.16	7138.48	8032.64	625.78	8011.15	40.4632130
-104.7118019	0.00						
14004.00	89.95	90.16	7138.57	8132.49	625.51	8111.15	40.4632122
-104.7114426	0.00						
14104.00	89.95	90.16	7138.66	8232.35	625.23	8211.15	40.4632113
-104.7110832	0.00						
14204.00	89.95	90.16	7138.75	8332.20	624.95	8311.15	40.4632105
-104.7107238	0.00						
14304.00	89.95	90.16	7138.83	8432.06	624.68	8411.15	40.4632096
-104.7103644	0.00						
14404.00	89.95	90.16	7138.92	8531.91	624.40	8511.14	40.4632088
-104.7100051	0.00						
14504.00	89.95	90.16	7139.01	8631.77	624.12	8611.14	40.4632079
-104.7096457	0.00						
14604.00	89.95	90.16	7139.09	8731.62	623.85	8711.14	40.4632071
-104.7092863	0.00						
14704.00	89.95	90.16	7139.18	8831.48	623.57	8811.14	40.4632062
-104.7089270	0.00						
14804.00	89.95	90.16	7139.27	8931.33	623.30	8911.14	40.4632053
-104.7085676	0.00						
14904.00	89.95	90.16	7139.36	9031.19	623.02	9011.14	40.4632045
-104.7082082	0.00						
15004.00	89.95	90.16	7139.44	9131.04	622.74	9111.14	40.4632036
-104.7078488	0.00						
15104.00	89.95	90.16	7139.53	9230.90	622.47	9211.14	40.4632028
-104.7074895	0.00						
15204.00	89.95	90.16	7139.62	9330.76	622.19	9311.14	40.4632019
-104.7071301	0.00						
15304.00	89.95	90.16	7139.71	9430.61	621.92	9411.14	40.4632010
-104.7067707	0.00						
15404.00	89.95	90.16	7139.79	9530.47	621.64	9511.14	40.4632002
-104.7064113	0.00						
15504.00	89.95	90.16	7139.88	9630.32	621.36	9611.14	40.4631993
-104.7060520	0.00						
15604.00	89.95	90.16	7139.97	9730.18	621.09	9711.14	40.4631984
-104.7056926	0.00						
15704.00	89.95	90.16	7140.06	9830.03	620.81	9811.14	40.4631976

## SEELEY\_FEDERAL\_41C-30-L\_REV-A.0\_\_PWP.las

-104.7053332	0.00						
15804.00	89.95	90.16	7140.14	9929.89	620.54	9911.14	40.4631967
-104.7049739	0.00						
15904.00	89.95	90.16	7140.23	10029.74	620.26	10011.14	40.4631958
-104.7046145	0.00						
16004.00	89.95	90.16	7140.32	10129.60	619.98	10111.14	40.4631950
-104.7042551	0.00						
16104.00	89.95	90.16	7140.40	10229.45	619.71	10211.14	40.4631941
-104.7038957	0.00						
16204.00	89.95	90.16	7140.49	10329.31	619.43	10311.14	40.4631932
-104.7035364	0.00						
16304.00	89.95	90.16	7140.58	10429.16	619.15	10411.14	40.4631924
-104.7031770	0.00						
16404.00	89.95	90.16	7140.67	10529.02	618.88	10511.14	40.4631915
-104.7028176	0.00						
16504.00	89.95	90.16	7140.75	10628.88	618.60	10611.14	40.4631906
-104.7024583	0.00						
16604.00	89.95	90.16	7140.84	10728.73	618.33	10711.14	40.4631897
-104.7020989	0.00						
16704.00	89.95	90.16	7140.93	10828.59	618.05	10811.14	40.4631889
-104.7017395	0.00						
16804.00	89.95	90.16	7141.02	10928.44	617.77	10911.13	40.4631880
-104.7013801	0.00						
16904.00	89.95	90.16	7141.10	11028.30	617.50	11011.13	40.4631871
-104.7010208	0.00						
17004.00	89.95	90.16	7141.19	11128.15	617.22	11111.13	40.4631862
-104.7006614	0.00						
17104.00	89.95	90.16	7141.28	11228.01	616.95	11211.13	40.4631853
-104.7003020	0.00						
17204.00	89.95	90.16	7141.37	11327.86	616.67	11311.13	40.4631844
-104.6999426	0.00						
17304.00	89.95	90.16	7141.45	11427.72	616.39	11411.13	40.4631836
-104.6995833	0.00						
17404.00	89.95	90.16	7141.54	11527.57	616.12	11511.13	40.4631827
-104.6992239	0.00						
17504.00	89.95	90.16	7141.63	11627.43	615.84	11611.13	40.4631818
-104.6988645	0.00						
17604.00	89.95	90.16	7141.71	11727.29	615.56	11711.13	40.4631809
-104.6985052	0.00						
17704.00	89.95	90.16	7141.80	11827.14	615.29	11811.13	40.4631800
-104.6981458	0.00						
17804.00	89.95	90.16	7141.89	11927.00	615.01	11911.13	40.4631791
-104.6977864	0.00						
17904.00	89.95	90.16	7141.98	12026.85	614.74	12011.13	40.4631782
-104.6974270	0.00						
17930.45	89.95	90.16	7142.00	12053.26	614.66	12037.58	40.4631780
-104.6973320	0.00						



SRC ENERGY

# Planned Wellpath Report

SEELEY FEDERAL 41C-30-L(REV-A.0) PWP

Page 1 of 9



## REFERENCE WELLPATH IDENTIFICATION

Operator	SRC ENERGY	Slot	SLOT#08 SEELEY FEDERAL 41C-30-L (1853'FNL & 1593'FEL, SEC.26)
Area	COLORADO	Well	SEELEY FEDERAL 41C-30-L
Field	WELD COUNTY (NAD83,TRUE NORTH)	Wellbore	SEELEY FEDERAL 41C-30-L PWB
Facility	SEC.26-T06N-R66W		

## REPORT SETUP INFORMATION

Projection System	NAD83 / Lambert Colorado SP, Northern Zone (501), US feet	Software System	WellArchitect® 5.0
North Reference	True	User	Doddanna
Scale	0.999964	Report Generated	5/10/2018 at 12:51:34 PM
Convergence at slot	0.49° East	Database/Source file	WellArchitectDB/SEELEY_FEDERAL_41C-30-L_REV-A.0__PWP.xml

## WELLPATH LOCATION

	Local coordinates		Grid coordinates		Geographic coordinates	
	North[ft]	East[ft]	Easting[US ft]	Northing[US ft]	Latitude	Longitude
Slot Location	-139.94	-1.10	3211308.56	1411869.22	40°27'41.396"N	104°44'26.131"W
Facility Reference Pt			3211308.46	1412009.16	40°27'42.779"N	104°44'26.117"W
Field Reference Pt			3171284.48	1426358.81	40°30'07.643"N	104°53'02.634"W

## WELLPATH DATUM

Calculation method	Minimum curvature	PROPETRO 12 (4') (RKB) to Facility Vertical Datum	4701.00ft
Horizontal Reference Pt	Slot	PROPETRO 12 (4') (RKB) to Mean Sea Level	4701.00ft
Vertical Reference Pt	PROPETRO 12 (4') (RKB)	PROPETRO 12 (4') (RKB) to Mud Line at Slot (SLOT#08 SEELEY FEDERAL 41C-30-L (1853'FNL & 1593'FEL, SEC.26))	4701.00ft
MD Reference Pt	PROPETRO 12 (4') (RKB)	Section Origin	N 0.00, E 0.00 ft
Field Vertical Reference	Mean Sea Level	Section Azimuth	87.08°



# Planned Wellpath Report

## SEELEY FEDERAL 41C-30-L(REV-A.0) PWP

Page 2 of 9



REFERENCE WELLPATH IDENTIFICATION			
Operator	SRC ENERGY	Slot	SLOT#08 SEELEY FEDERAL 41C-30-L (1853'FNL & 1593'FEL, SEC.26)
Area	COLORADO	Well	SEELEY FEDERAL 41C-30-L
Field	WELD COUNTY (NAD83,TRUE NORTH)	Wellbore	SEELEY FEDERAL 41C-30-L PWB
Facility	SEC.26-T06N-R66W		

WELLPATH DATA (186 stations) † = interpolated/extrapolated station								
MD [ft]	Inclination [°]	Azimuth [°]	TVD [ft]	Vert Sect [ft]	North [ft]	East [ft]	DLS [°/100ft]	Comments
0.00†	0.000	61.799	0.00	0.00	0.00	0.00	0.00	
4.00	0.000	61.799	4.00	0.00	0.00	0.00	0.00	Tie On
104.00†	0.000	61.799	104.00	0.00	0.00	0.00	0.00	
204.00†	0.000	61.799	204.00	0.00	0.00	0.00	0.00	
300.00	0.000	61.799	300.00	0.00	0.00	0.00	0.00	End of Tangent
304.00†	0.080	61.799	304.00	0.00	0.00	0.00	2.00	
404.00†	2.080	61.799	403.98	1.71	0.89	1.66	2.00	
504.00†	4.080	61.799	503.83	6.57	3.43	6.40	2.00	
604.00†	6.080	61.799	603.43	14.57	7.62	14.20	2.00	
704.00†	8.080	61.799	702.66	25.72	13.44	25.06	2.00	
804.00†	10.080	61.799	801.40	39.99	20.90	38.97	2.00	
889.32	11.786	61.799	885.17	54.62	28.54	53.23	2.00	End of Build (XS)
904.00†	11.786	61.799	899.54	57.33	29.96	55.87	0.00	
1004.00†	11.786	61.799	997.43	75.80	39.61	73.88	0.00	
1104.00†	11.786	61.799	1095.33	94.27	49.27	91.88	0.00	
1204.00†	11.786	61.799	1193.22	112.74	58.92	109.88	0.00	
1304.00†	11.786	61.799	1291.11	131.21	68.57	127.88	0.00	
1404.00†	11.786	61.799	1389.00	149.68	78.23	145.88	0.00	
1504.00†	11.786	61.799	1486.89	168.15	87.88	163.88	0.00	
1604.00†	11.786	61.799	1584.78	186.62	97.53	181.88	0.00	
1704.00†	11.786	61.799	1682.68	205.09	107.18	199.89	0.00	
1804.00†	11.786	61.799	1780.57	223.56	116.84	217.89	0.00	
1904.00†	11.786	61.799	1878.46	242.03	126.49	235.89	0.00	
2004.00†	11.786	61.799	1976.35	260.50	136.14	253.89	0.00	
2104.00†	11.786	61.799	2074.24	278.97	145.80	271.89	0.00	
2204.00†	11.786	61.799	2172.13	297.44	155.45	289.89	0.00	
2304.00†	11.786	61.799	2270.03	315.91	165.10	307.90	0.00	
2404.00†	11.786	61.799	2367.92	334.38	174.75	325.90	0.00	
2504.00†	11.786	61.799	2465.81	352.86	184.41	343.90	0.00	
2604.00†	11.786	61.799	2563.70	371.33	194.06	361.90	0.00	



SRC ENERGY

# Planned Wellpath Report

## SEELEY FEDERAL 41C-30-L(REV-A.0) PWP

Page 3 of 9

**REFERENCE WELLPATH IDENTIFICATION**

Operator	SRC ENERGY	Slot	SLOT#08 SEELEY FEDERAL 41C-30-L (1853'FNL & 1593'FEL, SEC.26)
Area	COLORADO	Well	SEELEY FEDERAL 41C-30-L
Field	WELD COUNTY (NAD83,TRUE NORTH)	Wellbore	SEELEY FEDERAL 41C-30-L PWB
Facility	SEC.26-T06N-R66W		

**WELLPATH DATA (186 stations)** † = interpolated/extrapolated station

MD [ft]	Inclination [°]	Azimuth [°]	TVD [ft]	Vert Sect [ft]	North [ft]	East [ft]	DLS [°/100ft]	Comments
2704.00†	11.786	61.799	2661.59	389.80	203.71	379.90	0.00	
2804.00†	11.786	61.799	2759.48	408.27	213.37	397.90	0.00	
2904.00†	11.786	61.799	2857.37	426.74	223.02	415.90	0.00	
3004.00†	11.786	61.799	2955.27	445.21	232.67	433.91	0.00	
3104.00†	11.786	61.799	3053.16	463.68	242.32	451.91	0.00	
3204.00†	11.786	61.799	3151.05	482.15	251.98	469.91	0.00	
3304.00†	11.786	61.799	3248.94	500.62	261.63	487.91	0.00	
3404.00†	11.786	61.799	3346.83	519.09	271.28	505.91	0.00	
3504.00†	11.786	61.799	3444.72	537.56	280.94	523.91	0.00	
3604.00†	11.786	61.799	3542.62	556.03	290.59	541.92	0.00	
3704.00†	11.786	61.799	3640.51	574.50	300.24	559.92	0.00	
3804.00†	11.786	61.799	3738.40	592.97	309.89	577.92	0.00	
3904.00†	11.786	61.799	3836.29	611.44	319.55	595.92	0.00	
4004.00†	11.786	61.799	3934.18	629.91	329.20	613.92	0.00	
4104.00†	11.786	61.799	4032.07	648.38	338.85	631.92	0.00	
4204.00†	11.786	61.799	4129.97	666.85	348.51	649.92	0.00	
4304.00†	11.786	61.799	4227.86	685.32	358.16	667.93	0.00	
4404.00†	11.786	61.799	4325.75	703.79	367.81	685.93	0.00	
4504.00†	11.786	61.799	4423.64	722.26	377.47	703.93	0.00	
4604.00†	11.786	61.799	4521.53	740.73	387.12	721.93	0.00	
4704.00†	11.786	61.799	4619.42	759.20	396.77	739.93	0.00	
4804.00†	11.786	61.799	4717.32	777.67	406.42	757.93	0.00	
4904.00†	11.786	61.799	4815.21	796.14	416.08	775.94	0.00	
5004.00†	11.786	61.799	4913.10	814.61	425.73	793.94	0.00	
5104.00†	11.786	61.799	5010.99	833.08	435.38	811.94	0.00	
5204.00†	11.786	61.799	5108.88	851.55	445.04	829.94	0.00	
5304.00†	11.786	61.799	5206.77	870.03	454.69	847.94	0.00	
5404.00†	11.786	61.799	5304.67	888.50	464.34	865.94	0.00	
5504.00†	11.786	61.799	5402.56	906.97	473.99	883.94	0.00	
5604.00†	11.786	61.799	5500.45	925.44	483.65	901.95	0.00	



SRC ENERGY

# Planned Wellpath Report

## SEELEY FEDERAL 41C-30-L(REV-A.0) PWP

Page 4 of 9

**REFERENCE WELLPATH IDENTIFICATION**

Operator	SRC ENERGY	Slot	SLOT#08 SEELEY FEDERAL 41C-30-L (1853'FNL & 1593'FEL, SEC.26)
Area	COLORADO	Well	SEELEY FEDERAL 41C-30-L
Field	WELD COUNTY (NAD83,TRUE NORTH)	Wellbore	SEELEY FEDERAL 41C-30-L PWB
Facility	SEC.26-T06N-R66W		

**WELLPATH DATA (186 stations)** † = interpolated/extrapolated station

MD [ft]	Inclination [°]	Azimuth [°]	TVD [ft]	Vert Sect [ft]	North [ft]	East [ft]	DLS [°/100ft]	Comments
5704.00†	11.786	61.799	5598.34	943.91	493.30	919.95	0.00	
5804.00†	11.786	61.799	5696.23	962.38	502.95	937.95	0.00	
5904.00†	11.786	61.799	5794.12	980.85	512.61	955.95	0.00	
6004.00†	11.786	61.799	5892.01	999.32	522.26	973.95	0.00	
6104.00†	11.786	61.799	5989.91	1017.79	531.91	991.95	0.00	
6204.00†	11.786	61.799	6087.80	1036.26	541.56	1009.96	0.00	
6304.00†	11.786	61.799	6185.69	1054.73	551.22	1027.96	0.00	
6404.00†	11.786	61.799	6283.58	1073.20	560.87	1045.96	0.00	
6504.00†	11.786	61.799	6381.47	1091.67	570.52	1063.96	0.00	
6604.00†	11.786	61.799	6479.36	1110.14	580.18	1081.96	0.00	
6704.00†	11.786	61.799	6577.26	1128.61	589.83	1099.96	0.00	
6740.87	11.786	61.799	6613.35	1135.42	593.39	1106.60	0.00	End of Tangent (XS)
6804.00†	16.981	71.220	6674.49	1150.13	599.41	1121.02	9.00	
6904.00†	25.628	78.237	6767.58	1185.62	608.54	1156.09	9.00	
7004.00†	34.447	81.854	6854.07	1235.26	616.97	1205.36	9.00	
7104.00†	43.334	84.132	6931.83	1297.82	624.50	1267.62	9.00	
7204.00†	52.254	85.762	6998.95	1371.76	630.94	1341.33	9.00	
7304.00†	61.190	87.038	7053.76	1455.27	636.14	1424.69	9.00	
7404.00†	70.137	88.111	7094.93	1546.29	639.96	1515.62	9.00	
7504.00†	79.090	89.068	7121.44	1642.57	642.32	1611.91	9.00	
7604.00†	88.045	89.969	7132.63	1741.75	643.14	1711.18	9.00	
7625.27	89.950	90.158	7133.00†	1762.98	643.12	1732.44	9.00	End of 3D Arc (XS)
7704.00†	89.950	90.158	7133.07	1841.60	642.90	1811.17	0.00	
7804.00†	89.950	90.158	7133.16	1941.46	642.63	1911.17	0.00	
7904.00†	89.950	90.158	7133.24	2041.31	642.35	2011.17	0.00	
8004.00†	89.950	90.158	7133.33	2141.17	642.07	2111.17	0.00	
8104.00†	89.950	90.158	7133.42	2241.02	641.80	2211.17	0.00	
8204.00†	89.950	90.158	7133.51	2340.88	641.52	2311.17	0.00	
8304.00†	89.950	90.158	7133.59	2440.73	641.24	2411.17	0.00	
8404.00†	89.950	90.158	7133.68	2540.59	640.97	2511.17	0.00	



SRC ENERGY

# Planned Wellpath Report

## SEELEY FEDERAL 41C-30-L(REV-A.0) PWP

Page 5 of 9

**REFERENCE WELLPATH IDENTIFICATION**

Operator	SRC ENERGY	Slot	SLOT#08 SEELEY FEDERAL 41C-30-L (1853'FNL & 1593'FEL, SEC.26)
Area	COLORADO	Well	SEELEY FEDERAL 41C-30-L
Field	WELD COUNTY (NAD83,TRUE NORTH)	Wellbore	SEELEY FEDERAL 41C-30-L PWB
Facility	SEC.26-T06N-R66W		

**WELLPATH DATA (186 stations)** † = interpolated/extrapolated station

MD [ft]	Inclination [°]	Azimuth [°]	TVD [ft]	Vert Sect [ft]	North [ft]	East [ft]	DLS [°/100ft]	Comments
8504.00†	89.950	90.158	7133.77	2640.44	640.69	2611.17	0.00	
8604.00†	89.950	90.158	7133.85	2740.30	640.42	2711.17	0.00	
8704.00†	89.950	90.158	7133.94	2840.16	640.14	2811.17	0.00	
8804.00†	89.950	90.158	7134.03	2940.01	639.86	2911.17	0.00	
8904.00†	89.950	90.158	7134.12	3039.87	639.59	3011.17	0.00	
9004.00†	89.950	90.158	7134.20	3139.72	639.31	3111.17	0.00	
9104.00†	89.950	90.158	7134.29	3239.58	639.04	3211.17	0.00	
9204.00†	89.950	90.158	7134.38	3339.43	638.76	3311.17	0.00	
9304.00†	89.950	90.158	7134.47	3439.29	638.48	3411.17	0.00	
9404.00†	89.950	90.158	7134.55	3539.14	638.21	3511.17	0.00	
9504.00†	89.950	90.158	7134.64	3639.00	637.93	3611.17	0.00	
9604.00†	89.950	90.158	7134.73	3738.85	637.66	3711.17	0.00	
9704.00†	89.950	90.158	7134.82	3838.71	637.38	3811.16	0.00	
9804.00†	89.950	90.158	7134.90	3938.56	637.10	3911.16	0.00	
9904.00†	89.950	90.158	7134.99	4038.42	636.83	4011.16	0.00	
10004.00†	89.950	90.158	7135.08	4138.28	636.55	4111.16	0.00	
10104.00†	89.950	90.158	7135.16	4238.13	636.27	4211.16	0.00	
10204.00†	89.950	90.158	7135.25	4337.99	636.00	4311.16	0.00	
10304.00†	89.950	90.158	7135.34	4437.84	635.72	4411.16	0.00	
10404.00†	89.950	90.158	7135.43	4537.70	635.45	4511.16	0.00	
10504.00†	89.950	90.158	7135.51	4637.55	635.17	4611.16	0.00	
10604.00†	89.950	90.158	7135.60	4737.41	634.89	4711.16	0.00	
10704.00†	89.950	90.158	7135.69	4837.26	634.62	4811.16	0.00	
10804.00†	89.950	90.158	7135.78	4937.12	634.34	4911.16	0.00	
10904.00†	89.950	90.158	7135.86	5036.97	634.07	5011.16	0.00	
11004.00†	89.950	90.158	7135.95	5136.83	633.79	5111.16	0.00	
11104.00†	89.950	90.158	7136.04	5236.68	633.51	5211.16	0.00	
11204.00†	89.950	90.158	7136.13	5336.54	633.24	5311.16	0.00	
11304.00†	89.950	90.158	7136.21	5436.40	632.96	5411.16	0.00	
11404.00†	89.950	90.158	7136.30	5536.25	632.68	5511.16	0.00	



SRC ENERGY

# Planned Wellpath Report

## SEELEY FEDERAL 41C-30-L(REV-A.0) PWP

Page 6 of 9

**REFERENCE WELLPATH IDENTIFICATION**

Operator	SRC ENERGY	Slot	SLOT#08 SEELEY FEDERAL 41C-30-L (1853'FNL & 1593'FEL, SEC.26)
Area	COLORADO	Well	SEELEY FEDERAL 41C-30-L
Field	WELD COUNTY (NAD83,TRUE NORTH)	Wellbore	SEELEY FEDERAL 41C-30-L PWB
Facility	SEC.26-T06N-R66W		

**WELLPATH DATA (186 stations)** † = interpolated/extrapolated station

MD [ft]	Inclination [°]	Azimuth [°]	TVD [ft]	Vert Sect [ft]	North [ft]	East [ft]	DLS [°/100ft]	Comments
11504.00†	89.950	90.158	7136.39	5636.11	632.41	5611.16	0.00	
11604.00†	89.950	90.158	7136.47	5735.96	632.13	5711.16	0.00	
11704.00†	89.950	90.158	7136.56	5835.82	631.86	5811.16	0.00	
11804.00†	89.950	90.158	7136.65	5935.67	631.58	5911.16	0.00	
11904.00†	89.950	90.158	7136.74	6035.53	631.30	6011.16	0.00	
12004.00†	89.950	90.158	7136.82	6135.38	631.03	6111.16	0.00	
12104.00†	89.950	90.158	7136.91	6235.24	630.75	6211.15	0.00	
12204.00†	89.950	90.158	7137.00	6335.09	630.48	6311.15	0.00	
12304.00†	89.950	90.158	7137.09	6434.95	630.20	6411.15	0.00	
12404.00†	89.950	90.158	7137.17	6534.80	629.92	6511.15	0.00	
12504.00†	89.950	90.158	7137.26	6634.66	629.65	6611.15	0.00	
12604.00†	89.950	90.158	7137.35	6734.52	629.37	6711.15	0.00	
12704.00†	89.950	90.158	7137.44	6834.37	629.10	6811.15	0.00	
12804.00†	89.950	90.158	7137.52	6934.23	628.82	6911.15	0.00	
12904.00†	89.950	90.158	7137.61	7034.08	628.54	7011.15	0.00	
13004.00†	89.950	90.158	7137.70	7133.94	628.27	7111.15	0.00	
13104.00†	89.950	90.158	7137.78	7233.79	627.99	7211.15	0.00	
13204.00†	89.950	90.158	7137.87	7333.65	627.71	7311.15	0.00	
13304.00†	89.950	90.158	7137.96	7433.50	627.44	7411.15	0.00	
13404.00†	89.950	90.158	7138.05	7533.36	627.16	7511.15	0.00	
13504.00†	89.950	90.158	7138.13	7633.21	626.89	7611.15	0.00	
13604.00†	89.950	90.158	7138.22	7733.07	626.61	7711.15	0.00	
13704.00†	89.950	90.158	7138.31	7832.92	626.33	7811.15	0.00	
13804.00†	89.950	90.158	7138.40	7932.78	626.06	7911.15	0.00	
13904.00†	89.950	90.158	7138.48	8032.64	625.78	8011.15	0.00	
14004.00†	89.950	90.158	7138.57	8132.49	625.51	8111.15	0.00	
14104.00†	89.950	90.158	7138.66	8232.35	625.23	8211.15	0.00	
14204.00†	89.950	90.158	7138.75	8332.20	624.95	8311.15	0.00	
14304.00†	89.950	90.158	7138.83	8432.06	624.68	8411.15	0.00	
14404.00†	89.950	90.158	7138.92	8531.91	624.40	8511.14	0.00	





SRC ENERGY

# Planned Wellpath Report

SEELEY FEDERAL 41C-30-L(REV-A.0) PWP

Page 7 of 9

**REFERENCE WELLPATH IDENTIFICATION**

Operator	SRC ENERGY	Slot	SLOT#08 SEELEY FEDERAL 41C-30-L (1853'FNL & 1593'FEL, SEC.26)
Area	COLORADO	Well	SEELEY FEDERAL 41C-30-L
Field	WELD COUNTY (NAD83,TRUE NORTH)	Wellbore	SEELEY FEDERAL 41C-30-L PWB
Facility	SEC.26-T06N-R66W		

**WELLPATH DATA (186 stations)** † = interpolated/extrapolated station

MD [ft]	Inclination [°]	Azimuth [°]	TVD [ft]	Vert Sect [ft]	North [ft]	East [ft]	DLS [°/100ft]	Comments
14504.00†	89.950	90.158	7139.01	8631.77	624.12	8611.14	0.00	
14604.00†	89.950	90.158	7139.09	8731.62	623.85	8711.14	0.00	
14704.00†	89.950	90.158	7139.18	8831.48	623.57	8811.14	0.00	
14804.00†	89.950	90.158	7139.27	8931.33	623.30	8911.14	0.00	
14904.00†	89.950	90.158	7139.36	9031.19	623.02	9011.14	0.00	
15004.00†	89.950	90.158	7139.44	9131.04	622.74	9111.14	0.00	
15104.00†	89.950	90.158	7139.53	9230.90	622.47	9211.14	0.00	
15204.00†	89.950	90.158	7139.62	9330.76	622.19	9311.14	0.00	
15304.00†	89.950	90.158	7139.71	9430.61	621.92	9411.14	0.00	
15404.00†	89.950	90.158	7139.79	9530.47	621.64	9511.14	0.00	
15504.00†	89.950	90.158	7139.88	9630.32	621.36	9611.14	0.00	
15604.00†	89.950	90.158	7139.97	9730.18	621.09	9711.14	0.00	
15704.00†	89.950	90.158	7140.06	9830.03	620.81	9811.14	0.00	
15804.00†	89.950	90.158	7140.14	9929.89	620.54	9911.14	0.00	
15904.00†	89.950	90.158	7140.23	10029.74	620.26	10011.14	0.00	
16004.00†	89.950	90.158	7140.32	10129.60	619.98	10111.14	0.00	
16104.00†	89.950	90.158	7140.40	10229.45	619.71	10211.14	0.00	
16204.00†	89.950	90.158	7140.49	10329.31	619.43	10311.14	0.00	
16304.00†	89.950	90.158	7140.58	10429.16	619.15	10411.14	0.00	
16404.00†	89.950	90.158	7140.67	10529.02	618.88	10511.14	0.00	
16504.00†	89.950	90.158	7140.75	10628.88	618.60	10611.14	0.00	
16604.00†	89.950	90.158	7140.84	10728.73	618.33	10711.14	0.00	
16704.00†	89.950	90.158	7140.93	10828.59	618.05	10811.14	0.00	
16804.00†	89.950	90.158	7141.02	10928.44	617.77	10911.13	0.00	
16904.00†	89.950	90.158	7141.10	11028.30	617.50	11011.13	0.00	
17004.00†	89.950	90.158	7141.19	11128.15	617.22	11111.13	0.00	
17104.00†	89.950	90.158	7141.28	11228.01	616.95	11211.13	0.00	
17204.00†	89.950	90.158	7141.37	11327.86	616.67	11311.13	0.00	
17304.00†	89.950	90.158	7141.45	11427.72	616.39	11411.13	0.00	
17404.00†	89.950	90.158	7141.54	11527.57	616.12	11511.13	0.00	



SRC ENERGY

# Planned Wellpath Report

## SEELEY FEDERAL 41C-30-L(REV-A.0) PWP

Page 8 of 9



### REFERENCE WELLPATH IDENTIFICATION

Operator	SRC ENERGY	Slot	SLOT#08 SEELEY FEDERAL 41C-30-L (1853'FNL & 1593'FEL, SEC.26)
Area	COLORADO	Well	SEELEY FEDERAL 41C-30-L
Field	WELD COUNTY (NAD83,TRUE NORTH)	Wellbore	SEELEY FEDERAL 41C-30-L PWB
Facility	SEC.26-T06N-R66W		

### WELLPATH DATA (186 stations) † = interpolated/extrapolated station

MD [ft]	Inclination [°]	Azimuth [°]	TVD [ft]	Vert Sect [ft]	North [ft]	East [ft]	DLS [°/100ft]	Comments
17504.00†	89.950	90.158	7141.63	11627.43	615.84	11611.13	0.00	
17604.00†	89.950	90.158	7141.71	11727.29	615.56	11711.13	0.00	
17704.00†	89.950	90.158	7141.80	11827.14	615.29	11811.13	0.00	
17804.00†	89.950	90.158	7141.89	11927.00	615.01	11911.13	0.00	
17904.00†	89.950	90.158	7141.98	12026.85	614.74	12011.13	0.00	
17930.45	89.950	90.158	7142.00 <sup>2</sup>	12053.26	614.66	12037.58	0.00	End of Tangent (XS)

### HOLE & CASING SECTIONS

- Ref Wellbore: SEELEY FEDERAL 41C-30-L PWB      Ref Wellpath: SEELEY FEDERAL 41C-30-L(REV-A.0) PWP

String/Diameter	Start MD [ft]	End MD [ft]	Interval [ft]	Start TVD [ft]	End TVD [ft]	Start N/S [ft]	Start E/W [ft]	End N/S [ft]	End E/W [ft]
13.5in Open Hole	4.00	1750.00	1746.00	4.00	1727.71	0.00	0.00	111.62	208.17
9.625in Casing Surface	4.00	1750.00	1746.00	4.00	1727.71	0.00	0.00	111.62	208.17
8.5in Open Hole	1750.00	17930.45	16180.45	1727.71	N/A	111.62	208.17	N/A	N/A



# Planned Wellpath Report

SEELEY FEDERAL 41C-30-L(REV-A.0) PWP

Page 9 of 9



REFERENCE WELLPATH IDENTIFICATION			
Operator	SRC ENERGY	Slot	SLOT#08 SEELEY FEDERAL 41C-30-L (1853'FNL & 1593'FEL, SEC.26)
Area	COLORADO	Well	SEELEY FEDERAL 41C-30-L
Field	WELD COUNTY (NAD83,TRUE NORTH)	Wellbore	SEELEY FEDERAL 41C-30-L PWB
Facility	SEC.26-T06N-R66W		

TARGETS									
Name	MD [ft]	TVD [ft]	North [ft]	East [ft]	Grid East [US ft]	Grid North [US ft]	Latitude	Longitude	Shape
EAST HALF OF SEC.02-T05N-R66W		-22.00	139.96	1.08	3211308.44	1412009.18	40°27'42.779"N	104°44'26.117"W	polygon
EAST HALF OF SEC.26-T06N-R66W		-22.00	139.96	1.08	3211308.44	1412009.18	40°27'42.779"N	104°44'26.117"W	polygon
EAST HALF OF SEC.35-T06N-R66W		-22.00	139.96	1.08	3211308.44	1412009.18	40°27'42.779"N	104°44'26.117"W	polygon
SEC.25-T06N-R66W		-22.00	139.96	1.08	3211308.44	1412009.18	40°27'42.779"N	104°44'26.117"W	polygon
SEC.30-T06N-R65W		-22.00	139.96	1.08	3211308.44	1412009.18	40°27'42.779"N	104°44'26.117"W	polygon
SOUTH HALF OF SEC.19-T06N-R65W		-22.00	139.96	1.08	3211308.44	1412009.18	40°27'42.779"N	104°44'26.117"W	polygon
SOUTH HALF OF SEC.24-T06N-R66W		-22.00	139.96	1.08	3211308.44	1412009.18	40°27'42.779"N	104°44'26.117"W	polygon
1) SEELEY FEDERAL 41C-30-L TOP OF PROD ON PLAT (1208'FNL & 150'FWL, SEC.25)	7625.27	7133.00	643.12	1732.44	3213035.36	1412527.13	40°27'47.750"N	104°44'03.718"W	circle
2) SEELEY FEDERAL 41C-30-L BHL ON PLAT (1203'FNL & 150'FEL, SEC.30)	17930.45	7142.00	614.66	12037.58	3223339.97	1412586.93	40°27'47.441"N	104°41'50.395"W	circle

SURVEY PROGRAM -				
Ref Wellbore: SEELEY FEDERAL 41C-30-L PWB		Ref Wellpath: SEELEY FEDERAL 41C-30-L(REV-A.0) PWP		
Start MD [ft]	End MD [ft]	Positional Uncertainty Model	Log Name/Comment	Wellbore
4.00	1750.00	BHI NaviTrak (Rotating+Axial Corr)		SEELEY FEDERAL 41C-30-L PWB
1750.00	17930.45	BHI AutoTrak Curve (IFR1, Short)		SEELEY FEDERAL 41C-30-L PWB