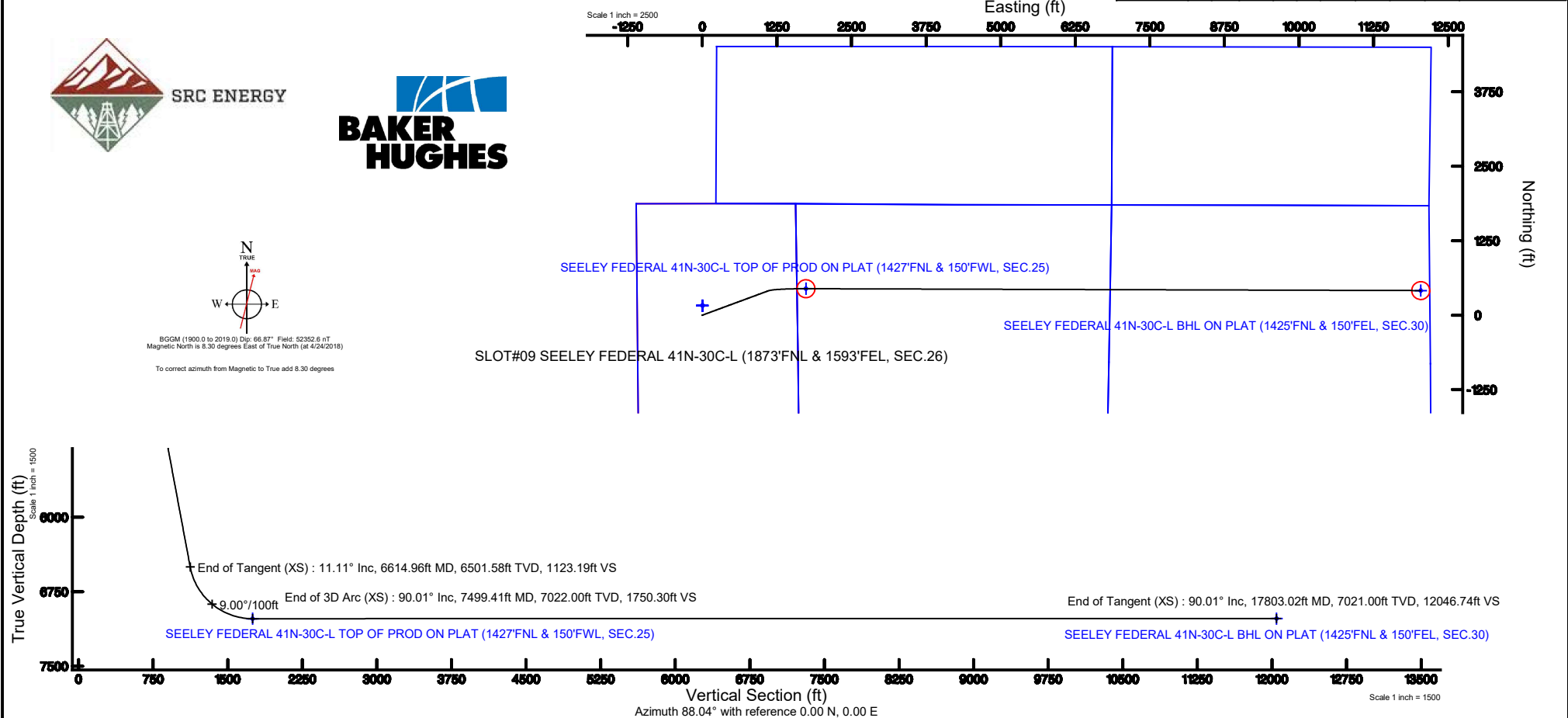


Location:	COLORADO	Slot:	SLOT#09 SEELEY FEDERAL 41N-30C-L (1873FNL & 1593FEL, SEC.26)
Field:	WELD COUNTY (NAD83,TRUE NORTH)	Well:	SEELEY FEDERAL 41N-30C-L
Facility:	SEC.26-T06N-R66W	Wellbore:	SEELEY FEDERAL 41N-30C-L PWB
Plot reference wellpath is SEELEY FEDERAL 41N-30C-L (REV.A/D) PWP		Grid System: NAD83 / Lambert Colorado SP, Northern Zone (501), US feet	
True vertical depths are referenced to PROPETRO 12 (4') (RKB)		* = Wellpath was transformed from a different geodetic datum	
Measured depths are referenced to PROPETRO 12 (4') (RKB)		North Reference: True north	
PROPETRO 12 (4') (RKB) to Mean Sea Level: 4701 feet		Scale: True distance	
Mean Sea Level to Mud line (At Slot: SLOT#09 SEELEY FEDERAL 41N-30C-L (1873FNL & 1593FEL, SEC.26)): 0 feet		Depths are in feet	
Coordinates are in feet referenced to Slot		Created by: dodanna on 2018-05-10	
		Database: WellArchitectDB	

Well Profile Data								
Design Comment	MD (ft)	Inc (°)	Az (°)	TVD (ft)	Local N (ft)	Local E (ft)	DLS (°/100ft)	VS (ft)
Tie On	4.00	0.000	69.707	4.00	0.00	0.00	0.00	0.00
End of Tangent	200.00	0.000	69.707	200.00	0.00	0.00	0.00	0.00
End of Build (XS)	755.73	11.115	69.707	752.25	18.64	50.40	2.00	51.01
End of Tangent (XS)	6614.96	11.115	69.707	6501.58	410.36	1109.78	0.00	1123.19
End of 3D Arc (XS)	7499.41	90.006	90.174	7022.00	444.20	1736.10	9.00	1750.30
End of Tangent (XS)	17803.02	90.006	90.174	7021.00	412.83	12039.66	0.00	12046.74

Facility Name				Grid East (US R)	Grid North (US R)	Latitude	Longitude
SEC 26-T06N-R66W				3211308.457	1412005.161	40°27'42.7797N	104°44'26.1177W
Sht		Local N (R)	Local E (R)	Grid East (US R)	Grid North (US R)	Latitude	Longitude
SLOT909 BEELEY FEDERAL 41N-30C-L (1873FM, & 1593FEL, SEC 26)		-159.98	-1.41	3211308.420	1411849.185	40°27'41.1987N	104°44'26.1357W
PROPTG12 12 (H) (R08) to Mud line (At Sht. SLOT909 BEELEY FEDERAL 41N-30C-L (1873FM, & 1593FEL, SEC 26))						47010	
Mean Sea Level to Mud line (At Sht. SLOT909 BEELEY FEDERAL 41N-30C-L (1873FM, & 1593FEL, SEC 26))						08	
PROPTG12 12 (H) (R08) to Mean Sea Level						47010	
Survey Program							
Start MD (ft)	End MD (ft)	Tool	Model	Log Name/Comment	Wellbore		
4.00	1750.00	BHI NavTrak	BHI NavTrak (Rotating+Axial Corr)		SEELEY FEDERAL 41N-30C-L PWB		
1750.00	17803.02	BHI AutoTrak Curve	BHI AutoTrak Curve (IFR1, Short)		SEELEY FEDERAL 41N-30C-L PWB		

[illegible]

SEELEY_FEDERAL_41N-30C-L__REV-A.0__PWP.las

~VERSION INFORMATION

VERS. 2.0 : CWLS LOG ASCII STANDARD-VERSION 2.0

WRAP. NO : ASCII DATA SECTION CONTAINS ONE ROW PER WELLPATH STATION

~WELL INFORMATION

#MNEM	.UNITS	DATA	:DESCRIPTION
#----	.-----	----	:-----
STRT	.ft	0.00	:START MD
STOP	.ft	17803.02	:STOP MD
STEP	.ft	0.0	:STEP (non-uniform increment)
NULL	.	-999.99	:NULL
COMP	.	SRC ENERGY	:OPERATOR
WELL	.	SEELEY FEDERAL 41N-30C-L	:WELL
FLD	.	WELD COUNTY (NAD83,TRUE NORTH)	:FIELD
LOC	.	COLORADO	:AREA (aka: Location)
CNTY	.	N/A	:COUNTY
STAT	.	N/A	:STATE
CTRY	.	N/A	:COUNTRY
SRVC	.	Baker Hughes	:CONTRACTOR
DATE	.	04/25/2018	:LOG REV DATE
API	.		:API NUMBER

~OTHER INFORMATION

#Software: WellArchitect(R) Version 5.0

#MNEM	.UNITS	DATA	:DESCRIPTION
#----	.-----	----	:-----
WPTYPE	.	PLANNED WELLPATH	:WELLPATH TYPE
FACILITY	.	SEC.26-T06N-R66W	:FACILITY
SLOT	.	SLOT#09 SEELEY FEDERAL 41N-30C-L (1873'FNL & 1593'FEL, SEC.26):SLOT	
WELLBORE	.	SEELEY FEDERAL 41N-30C-L PWB	:WELLBORE
WELLPATH	.	SEELEY FEDERAL 41N-30C-L (REV-A.0) PWP	:WELLPATH
MDREFPT	.	PROPETRO 12 (4') (RKB)	:MD REFERENCE POINT
TVDREFPT	.	PROPETRO 12 (4') (RKB)	:TVD REFERENCE POINT
LCLREFPT	.	Slot	:LOCAL COORDINATE
REFERENCE PT			
VSAZIMUTH.deg		88.04	:VERTICAL SECTION
AZIMUTH			
VSORIGN	.ft	0.00	:VERTICAL SECTION ORIGIN
NORTH			
VSORIGE	.ft	0.00	:VERTICAL SECTION ORIGIN
EAST			

~CURVE (WELLPATH) INFORMATION

#MNEM	.UNITS	:DESCRIPTION
#----	.-----	:-----
DEPT	.ft	:MEASURED DEPTH

SEELEY_FEDERAL_41N-30C-L__REV-A.0__PWP.las

INC .deg :INCLINATION
 AZI .deg :AZIMUTH
 TVD .ft :TRUE VERTICAL DEPTH
 SECT .ft :CROSS SECTION (CURTAIN/VERTICAL)
 LOCALN .ft :LOCAL NORTH
 LOCALE .ft :LOCAL EAST
 LAT .deg :LATITUDE
 LONG .deg :LONGITUDE
 DLS .deg/100ft :DOGLEG SEVERITY

~ASCII DATA

0.00	0.00	69.71	0.00	0.00	0.00	0.00	40.4614439
-104.7405931	0.00						
4.00	0.00	69.71	4.00	0.00	0.00	0.00	40.4614439
-104.7405931	0.00						
104.00	0.00	69.71	104.00	0.00	0.00	0.00	40.4614439
-104.7405931	0.00						
200.00	0.00	69.71	200.00	0.00	0.00	0.00	40.4614439
-104.7405931	0.00						
204.00	0.08	69.71	204.00	0.00	0.00	0.00	40.4614439
-104.7405930	2.00						
304.00	2.08	69.71	303.98	1.79	0.65	1.77	40.4614457
-104.7405867	2.00						
404.00	4.08	69.71	403.83	6.89	2.52	6.81	40.4614508
-104.7405686	2.00						
504.00	6.08	69.71	503.43	15.30	5.59	15.11	40.4614592
-104.7405387	2.00						
604.00	8.08	69.71	602.66	27.00	9.86	26.67	40.4614710
-104.7404972	2.00						
704.00	10.08	69.71	701.40	41.98	15.34	41.48	40.4614860
-104.7404440	2.00						
755.73	11.12	69.71	752.25	51.01	18.64	50.40	40.4614950
-104.7404119	2.00						
804.00	11.12	69.71	799.62	59.84	21.86	59.13	40.4615039
-104.7403806	0.00						
904.00	11.12	69.71	897.74	78.14	28.55	77.21	40.4615222
-104.7403156	0.00						
1004.00	11.12	69.71	995.86	96.44	35.23	95.29	40.4615406
-104.7402506	0.00						
1104.00	11.12	69.71	1093.99	114.74	41.92	113.37	40.4615590
-104.7401857	0.00						
1204.00	11.12	69.71	1192.11	133.04	48.60	131.45	40.4615773
-104.7401207	0.00						
1304.00	11.12	69.71	1290.24	151.34	55.29	149.53	40.4615957
-104.7400557	0.00						
1404.00	11.12	69.71	1388.36	169.63	61.98	167.61	40.4616140
-104.7399907	0.00						
1504.00	11.12	69.71	1486.49	187.93	68.66	185.69	40.4616324

SEELEY_FEDERAL_41N-30C-L__REV-A.0__PWP.las

-104.7399257	0.00							
1604.00	11.12	69.71	1584.61	206.23	75.35	203.77	40.4616507	
-104.7398608	0.00							
1704.00	11.12	69.71	1682.74	224.53	82.03	221.85	40.4616691	
-104.7397958	0.00							
1804.00	11.12	69.71	1780.86	242.83	88.72	239.93	40.4616874	
-104.7397308	0.00							
1904.00	11.12	69.71	1878.98	261.13	95.40	258.01	40.4617058	
-104.7396658	0.00							
2004.00	11.12	69.71	1977.11	279.43	102.09	276.09	40.4617241	
-104.7396009	0.00							
2104.00	11.12	69.71	2075.23	297.73	108.77	294.17	40.4617425	
-104.7395359	0.00							
2204.00	11.12	69.71	2173.36	316.03	115.46	312.25	40.4617608	
-104.7394709	0.00							
2304.00	11.12	69.71	2271.48	334.33	122.15	330.34	40.4617792	
-104.7394059	0.00							
2404.00	11.12	69.71	2369.61	352.63	128.83	348.42	40.4617975	
-104.7393410	0.00							
2504.00	11.12	69.71	2467.73	370.93	135.52	366.50	40.4618159	
-104.7392760	0.00							
2604.00	11.12	69.71	2565.85	389.22	142.20	384.58	40.4618342	
-104.7392110	0.00							
2704.00	11.12	69.71	2663.98	407.52	148.89	402.66	40.4618526	
-104.7391460	0.00							
2804.00	11.12	69.71	2762.10	425.82	155.57	420.74	40.4618709	
-104.7390811	0.00							
2904.00	11.12	69.71	2860.23	444.12	162.26	438.82	40.4618893	
-104.7390161	0.00							
3004.00	11.12	69.71	2958.35	462.42	168.94	456.90	40.4619076	
-104.7389511	0.00							
3104.00	11.12	69.71	3056.48	480.72	175.63	474.98	40.4619260	
-104.7388861	0.00							
3204.00	11.12	69.71	3154.60	499.02	182.32	493.06	40.4619443	
-104.7388212	0.00							
3304.00	11.12	69.71	3252.73	517.32	189.00	511.14	40.4619627	
-104.7387562	0.00							
3404.00	11.12	69.71	3350.85	535.62	195.69	529.22	40.4619810	
-104.7386912	0.00							
3504.00	11.12	69.71	3448.97	553.92	202.37	547.30	40.4619994	
-104.7386262	0.00							
3604.00	11.12	69.71	3547.10	572.22	209.06	565.38	40.4620177	
-104.7385612	0.00							
3704.00	11.12	69.71	3645.22	590.51	215.74	583.46	40.4620361	
-104.7384963	0.00							
3804.00	11.12	69.71	3743.35	608.81	222.43	601.54	40.4620544	
-104.7384313	0.00							
3904.00	11.12	69.71	3841.47	627.11	229.11	619.63	40.4620728	

SEELEY_FEDERAL_41N-30C-L__REV-A.0__PWP.las

-104.7383663	0.00						
4004.00	11.12	69.71	3939.60	645.41	235.80	637.71	40.4620911
-104.7383013	0.00						
4104.00	11.12	69.71	4037.72	663.71	242.49	655.79	40.4621095
-104.7382364	0.00						
4204.00	11.12	69.71	4135.84	682.01	249.17	673.87	40.4621278
-104.7381714	0.00						
4304.00	11.12	69.71	4233.97	700.31	255.86	691.95	40.4621462
-104.7381064	0.00						
4404.00	11.12	69.71	4332.09	718.61	262.54	710.03	40.4621645
-104.7380414	0.00						
4504.00	11.12	69.71	4430.22	736.91	269.23	728.11	40.4621829
-104.7379765	0.00						
4604.00	11.12	69.71	4528.34	755.21	275.91	746.19	40.4622012
-104.7379115	0.00						
4704.00	11.12	69.71	4626.47	773.51	282.60	764.27	40.4622196
-104.7378465	0.00						
4804.00	11.12	69.71	4724.59	791.80	289.28	782.35	40.4622379
-104.7377815	0.00						
4904.00	11.12	69.71	4822.72	810.10	295.97	800.43	40.4622563
-104.7377166	0.00						
5004.00	11.12	69.71	4920.84	828.40	302.66	818.51	40.4622746
-104.7376516	0.00						
5104.00	11.12	69.71	5018.96	846.70	309.34	836.59	40.4622929
-104.7375866	0.00						
5204.00	11.12	69.71	5117.09	865.00	316.03	854.67	40.4623113
-104.7375216	0.00						
5304.00	11.12	69.71	5215.21	883.30	322.71	872.75	40.4623296
-104.7374566	0.00						
5404.00	11.12	69.71	5313.34	901.60	329.40	890.83	40.4623480
-104.7373917	0.00						
5504.00	11.12	69.71	5411.46	919.90	336.08	908.92	40.4623663
-104.7373267	0.00						
5604.00	11.12	69.71	5509.59	938.20	342.77	927.00	40.4623847
-104.7372617	0.00						
5704.00	11.12	69.71	5607.71	956.50	349.45	945.08	40.4624030
-104.7371967	0.00						
5804.00	11.12	69.71	5705.83	974.80	356.14	963.16	40.4624214
-104.7371318	0.00						
5904.00	11.12	69.71	5803.96	993.10	362.83	981.24	40.4624397
-104.7370668	0.00						
6004.00	11.12	69.71	5902.08	1011.39	369.51	999.32	40.4624581
-104.7370018	0.00						
6104.00	11.12	69.71	6000.21	1029.69	376.20	1017.40	40.4624764
-104.7369368	0.00						
6204.00	11.12	69.71	6098.33	1047.99	382.88	1035.48	40.4624948
-104.7368718	0.00						
6304.00	11.12	69.71	6196.46	1066.29	389.57	1053.56	40.4625131

SEELEY_FEDERAL_41N-30C-L__REV-A.0__PWP.las

-104.7368069	0.00						
6404.00	11.12	69.71	6294.58	1084.59	396.25	1071.64	40.4625315
-104.7367419	0.00						
6504.00	11.12	69.71	6392.71	1102.89	402.94	1089.72	40.4625498
-104.7366769	0.00						
6604.00	11.12	69.71	6490.83	1121.19	409.62	1107.80	40.4625682
-104.7366119	0.00						
6614.96	11.12	69.71	6501.58	1123.19	410.36	1109.78	40.4625702
-104.7366048	0.00						
6704.00	18.82	78.55	6587.55	1145.54	416.19	1131.94	40.4625862
-104.7365252	9.00						
6804.00	27.68	82.65	6679.34	1184.65	422.38	1170.87	40.4626032
-104.7363853	9.00						
6904.00	36.60	84.87	6763.94	1237.65	428.03	1223.70	40.4626187
-104.7361954	9.00						
7004.00	45.55	86.31	6839.25	1303.23	433.01	1289.15	40.4626323
-104.7359602	9.00						
7104.00	54.52	87.37	6903.42	1379.77	437.18	1365.60	40.4626438
-104.7356855	9.00						
7204.00	63.49	88.21	6954.87	1465.40	440.46	1451.16	40.4626528
-104.7353780	9.00						
7304.00	72.46	88.93	6992.33	1558.00	442.75	1543.74	40.4626590
-104.7350453	9.00						
7404.00	81.44	89.58	7014.89	1655.30	444.00	1641.05	40.4626625
-104.7346956	9.00						
7499.41	90.01	90.17	7022.00	1750.30	444.20	1736.10	40.4626630
-104.7343540	9.00						
7504.00	90.01	90.17	7022.00	1754.89	444.19	1740.69	40.4626630
-104.7343375	0.00						
7604.00	90.01	90.17	7021.99	1854.82	443.88	1840.69	40.4626621
-104.7339781	0.00						
7704.00	90.01	90.17	7021.98	1954.75	443.58	1940.69	40.4626612
-104.7336188	0.00						
7804.00	90.01	90.17	7021.97	2054.68	443.28	2040.69	40.4626604
-104.7332594	0.00						
7904.00	90.01	90.17	7021.96	2154.61	442.97	2140.69	40.4626595
-104.7329000	0.00						
8004.00	90.01	90.17	7021.95	2254.54	442.67	2240.69	40.4626587
-104.7325407	0.00						
8104.00	90.01	90.17	7021.94	2354.47	442.36	2340.69	40.4626578
-104.7321813	0.00						
8204.00	90.01	90.17	7021.93	2454.40	442.06	2440.69	40.4626569
-104.7318219	0.00						
8304.00	90.01	90.17	7021.92	2554.33	441.75	2540.69	40.4626561
-104.7314625	0.00						
8404.00	90.01	90.17	7021.91	2654.27	441.45	2640.69	40.4626552
-104.7311032	0.00						
8504.00	90.01	90.17	7021.90	2754.20	441.14	2740.69	40.4626544

SEELEY_FEDERAL_41N-30C-L__REV-A.0__PWP.las

-104.7307438	0.00						
8604.00	90.01	90.17	7021.89	2854.13	440.84	2840.69	40.4626535
-104.7303844	0.00						
8704.00	90.01	90.17	7021.88	2954.06	440.54	2940.69	40.4626526
-104.7300251	0.00						
8804.00	90.01	90.17	7021.87	3053.99	440.23	3040.69	40.4626518
-104.7296657	0.00						
8904.00	90.01	90.17	7021.86	3153.92	439.93	3140.69	40.4626509
-104.7293063	0.00						
9004.00	90.01	90.17	7021.85	3253.85	439.62	3240.69	40.4626500
-104.7289470	0.00						
9104.00	90.01	90.17	7021.84	3353.78	439.32	3340.68	40.4626491
-104.7285876	0.00						
9204.00	90.01	90.17	7021.83	3453.71	439.01	3440.68	40.4626483
-104.7282282	0.00						
9304.00	90.01	90.17	7021.82	3553.64	438.71	3540.68	40.4626474
-104.7278689	0.00						
9404.00	90.01	90.17	7021.82	3653.57	438.40	3640.68	40.4626465
-104.7275095	0.00						
9504.00	90.01	90.17	7021.81	3753.50	438.10	3740.68	40.4626456
-104.7271501	0.00						
9604.00	90.01	90.17	7021.80	3853.43	437.80	3840.68	40.4626448
-104.7267907	0.00						
9704.00	90.01	90.17	7021.79	3953.36	437.49	3940.68	40.4626439
-104.7264314	0.00						
9804.00	90.01	90.17	7021.78	4053.29	437.19	4040.68	40.4626430
-104.7260720	0.00						
9904.00	90.01	90.17	7021.77	4153.22	436.88	4140.68	40.4626421
-104.7257126	0.00						
10004.00	90.01	90.17	7021.76	4253.15	436.58	4240.68	40.4626412
-104.7253533	0.00						
10104.00	90.01	90.17	7021.75	4353.08	436.27	4340.68	40.4626404
-104.7249939	0.00						
10204.00	90.01	90.17	7021.74	4453.01	435.97	4440.68	40.4626395
-104.7246345	0.00						
10304.00	90.01	90.17	7021.73	4552.94	435.66	4540.68	40.4626386
-104.7242752	0.00						
10404.00	90.01	90.17	7021.72	4652.87	435.36	4640.68	40.4626377
-104.7239158	0.00						
10504.00	90.01	90.17	7021.71	4752.80	435.06	4740.68	40.4626368
-104.7235564	0.00						
10604.00	90.01	90.17	7021.70	4852.73	434.75	4840.68	40.4626359
-104.7231970	0.00						
10704.00	90.01	90.17	7021.69	4952.66	434.45	4940.68	40.4626350
-104.7228377	0.00						
10804.00	90.01	90.17	7021.68	5052.59	434.14	5040.68	40.4626341
-104.7224783	0.00						
10904.00	90.01	90.17	7021.67	5152.52	433.84	5140.68	40.4626332

SEELEY_FEDERAL_41N-30C-L__REV-A.0__PWP.las

-104.7221189	0.00						
11004.00	90.01	90.17	7021.66	5252.45	433.53	5240.68	40.4626324
-104.7217596	0.00						
11104.00	90.01	90.17	7021.65	5352.39	433.23	5340.68	40.4626315
-104.7214002	0.00						
11204.00	90.01	90.17	7021.64	5452.32	432.92	5440.68	40.4626306
-104.7210408	0.00						
11304.00	90.01	90.17	7021.63	5552.25	432.62	5540.67	40.4626297
-104.7206815	0.00						
11404.00	90.01	90.17	7021.62	5652.18	432.32	5640.67	40.4626288
-104.7203221	0.00						
11504.00	90.01	90.17	7021.61	5752.11	432.01	5740.67	40.4626279
-104.7199627	0.00						
11604.00	90.01	90.17	7021.60	5852.04	431.71	5840.67	40.4626270
-104.7196034	0.00						
11704.00	90.01	90.17	7021.59	5951.97	431.40	5940.67	40.4626261
-104.7192440	0.00						
11804.00	90.01	90.17	7021.58	6051.90	431.10	6040.67	40.4626252
-104.7188846	0.00						
11904.00	90.01	90.17	7021.57	6151.83	430.79	6140.67	40.4626243
-104.7185252	0.00						
12004.00	90.01	90.17	7021.56	6251.76	430.49	6240.67	40.4626234
-104.7181659	0.00						
12104.00	90.01	90.17	7021.55	6351.69	430.18	6340.67	40.4626225
-104.7178065	0.00						
12204.00	90.01	90.17	7021.54	6451.62	429.88	6440.67	40.4626215
-104.7174471	0.00						
12304.00	90.01	90.17	7021.53	6551.55	429.58	6540.67	40.4626206
-104.7170878	0.00						
12404.00	90.01	90.17	7021.52	6651.48	429.27	6640.67	40.4626197
-104.7167284	0.00						
12504.00	90.01	90.17	7021.51	6751.41	428.97	6740.67	40.4626188
-104.7163690	0.00						
12604.00	90.01	90.17	7021.50	6851.34	428.66	6840.67	40.4626179
-104.7160097	0.00						
12704.00	90.01	90.17	7021.49	6951.27	428.36	6940.67	40.4626170
-104.7156503	0.00						
12804.00	90.01	90.17	7021.49	7051.20	428.05	7040.67	40.4626161
-104.7152909	0.00						
12904.00	90.01	90.17	7021.48	7151.13	427.75	7140.67	40.4626152
-104.7149316	0.00						
13004.00	90.01	90.17	7021.47	7251.06	427.44	7240.67	40.4626143
-104.7145722	0.00						
13104.00	90.01	90.17	7021.46	7350.99	427.14	7340.67	40.4626133
-104.7142128	0.00						
13204.00	90.01	90.17	7021.45	7450.92	426.84	7440.67	40.4626124
-104.7138534	0.00						
13304.00	90.01	90.17	7021.44	7550.85	426.53	7540.67	40.4626115

SEELEY_FEDERAL_41N-30C-L__REV-A.0__PWP.las

-104.7134941	0.00						
13404.00	90.01	90.17	7021.43	7650.78	426.23	7640.66	40.4626106
-104.7131347	0.00						
13504.00	90.01	90.17	7021.42	7750.71	425.92	7740.66	40.4626097
-104.7127753	0.00						
13604.00	90.01	90.17	7021.41	7850.64	425.62	7840.66	40.4626087
-104.7124160	0.00						
13704.00	90.01	90.17	7021.40	7950.57	425.31	7940.66	40.4626078
-104.7120566	0.00						
13804.00	90.01	90.17	7021.39	8050.51	425.01	8040.66	40.4626069
-104.7116972	0.00						
13904.00	90.01	90.17	7021.38	8150.44	424.70	8140.66	40.4626060
-104.7113379	0.00						
14004.00	90.01	90.17	7021.37	8250.37	424.40	8240.66	40.4626050
-104.7109785	0.00						
14104.00	90.01	90.17	7021.36	8350.30	424.10	8340.66	40.4626041
-104.7106191	0.00						
14204.00	90.01	90.17	7021.35	8450.23	423.79	8440.66	40.4626032
-104.7102598	0.00						
14304.00	90.01	90.17	7021.34	8550.16	423.49	8540.66	40.4626022
-104.7099004	0.00						
14404.00	90.01	90.17	7021.33	8650.09	423.18	8640.66	40.4626013
-104.7095410	0.00						
14504.00	90.01	90.17	7021.32	8750.02	422.88	8740.66	40.4626004
-104.7091816	0.00						
14604.00	90.01	90.17	7021.31	8849.95	422.57	8840.66	40.4625994
-104.7088223	0.00						
14704.00	90.01	90.17	7021.30	8949.88	422.27	8940.66	40.4625985
-104.7084629	0.00						
14804.00	90.01	90.17	7021.29	9049.81	421.96	9040.66	40.4625976
-104.7081035	0.00						
14904.00	90.01	90.17	7021.28	9149.74	421.66	9140.66	40.4625966
-104.7077442	0.00						
15004.00	90.01	90.17	7021.27	9249.67	421.35	9240.66	40.4625957
-104.7073848	0.00						
15104.00	90.01	90.17	7021.26	9349.60	421.05	9340.66	40.4625948
-104.7070254	0.00						
15204.00	90.01	90.17	7021.25	9449.53	420.75	9440.66	40.4625938
-104.7066661	0.00						
15304.00	90.01	90.17	7021.24	9549.46	420.44	9540.66	40.4625929
-104.7063067	0.00						
15404.00	90.01	90.17	7021.23	9649.39	420.14	9640.66	40.4625919
-104.7059473	0.00						
15504.00	90.01	90.17	7021.22	9749.32	419.83	9740.66	40.4625910
-104.7055880	0.00						
15604.00	90.01	90.17	7021.21	9849.25	419.53	9840.65	40.4625901
-104.7052286	0.00						
15704.00	90.01	90.17	7021.20	9949.18	419.22	9940.65	40.4625891

SEELEY_FEDERAL_41N-30C-L__REV-A.0__PWP.las

-104.7048692	0.00						
15804.00	90.01	90.17	7021.19	10049.11	418.92	10040.65	40.4625882
-104.7045098	0.00						
15904.00	90.01	90.17	7021.18	10149.04	418.61	10140.65	40.4625872
-104.7041505	0.00						
16004.00	90.01	90.17	7021.17	10248.97	418.31	10240.65	40.4625863
-104.7037911	0.00						
16104.00	90.01	90.17	7021.16	10348.90	418.01	10340.65	40.4625853
-104.7034317	0.00						
16204.00	90.01	90.17	7021.16	10448.83	417.70	10440.65	40.4625844
-104.7030724	0.00						
16304.00	90.01	90.17	7021.15	10548.76	417.40	10540.65	40.4625834
-104.7027130	0.00						
16404.00	90.01	90.17	7021.14	10648.69	417.09	10640.65	40.4625825
-104.7023536	0.00						
16504.00	90.01	90.17	7021.13	10748.62	416.79	10740.65	40.4625815
-104.7019943	0.00						
16604.00	90.01	90.17	7021.12	10848.56	416.48	10840.65	40.4625805
-104.7016349	0.00						
16704.00	90.01	90.17	7021.11	10948.49	416.18	10940.65	40.4625796
-104.7012755	0.00						
16804.00	90.01	90.17	7021.10	11048.42	415.87	11040.65	40.4625786
-104.7009162	0.00						
16904.00	90.01	90.17	7021.09	11148.35	415.57	11140.65	40.4625777
-104.7005568	0.00						
17004.00	90.01	90.17	7021.08	11248.28	415.27	11240.65	40.4625767
-104.7001974	0.00						
17104.00	90.01	90.17	7021.07	11348.21	414.96	11340.65	40.4625758
-104.6998381	0.00						
17204.00	90.01	90.17	7021.06	11448.14	414.66	11440.65	40.4625748
-104.6994787	0.00						
17304.00	90.01	90.17	7021.05	11548.07	414.35	11540.65	40.4625738
-104.6991193	0.00						
17404.00	90.01	90.17	7021.04	11648.00	414.05	11640.65	40.4625729
-104.6987599	0.00						
17504.00	90.01	90.17	7021.03	11747.93	413.74	11740.65	40.4625719
-104.6984006	0.00						
17604.00	90.01	90.17	7021.02	11847.86	413.44	11840.65	40.4625709
-104.6980412	0.00						
17704.00	90.01	90.17	7021.01	11947.79	413.13	11940.65	40.4625700
-104.6976818	0.00						
17803.02	90.01	90.17	7021.00	12046.74	412.83	12039.66	40.4625690
-104.6973260	0.00						



Planned Wellpath Report

SEELEY FEDERAL 41N-30C-L (REV-A.0) PWP

Page 1 of 9



REFERENCE WELLPATH IDENTIFICATION			
Operator	SRC ENERGY	Slot	SLOT#09 SEELEY FEDERAL 41N-30C-L (1873'FNL & 1593'FEL, SEC.26)
Area	COLORADO	Well	SEELEY FEDERAL 41N-30C-L
Field	WELD COUNTY (NAD83,TRUE NORTH)	Wellbore	SEELEY FEDERAL 41N-30C-L PWB
Facility	SEC.26-T06N-R66W		

REPORT SETUP INFORMATION			
Projection System	NAD83 / Lambert Colorado SP, Northern Zone (501), US feet	Software System	WellArchitect® 5.0
North Reference	True	User	Doddanna
Scale	0.999964	Report Generated	5/10/2018 at 1:16:24 PM
Convergence at slot	0.49° East	Database/Source file	WellArchitectDB/SEELEY_FEDERAL_41N-30C-L__REV-A.0__PWP.xml

WELLPATH LOCATION						
	Local coordinates		Grid coordinates		Geographic coordinates	
	North[ft]	East[ft]	Easting[US ft]	Northing[US ft]	Latitude	Longitude
Slot Location	-159.98	-1.41	3211308.42	1411849.19	40°27'41.198"N	104°44'26.135"W
Facility Reference Pt			3211308.46	1412009.16	40°27'42.779"N	104°44'26.117"W
Field Reference Pt			3171284.48	1426358.81	40°30'07.643"N	104°53'02.634"W

WELLPATH DATUM			
Calculation method	Minimum curvature	PROPETRO 12 (4') (RKB) to Facility Vertical Datum	4701.00ft
Horizontal Reference Pt	Slot	PROPETRO 12 (4') (RKB) to Mean Sea Level	4701.00ft
Vertical Reference Pt	PROPETRO 12 (4') (RKB)	PROPETRO 12 (4') (RKB) to Mud Line at Slot (SLOT#09 SEELEY FEDERAL 41N-30C-L (1873'FNL & 1593'FEL, SEC.26))	4701.00ft
MD Reference Pt	PROPETRO 12 (4') (RKB)	Section Origin	N 0.00, E 0.00 ft
Field Vertical Reference	Mean Sea Level	Section Azimuth	88.04°



Planned Wellpath Report

SEELEY FEDERAL 41N-30C-L (REV-A.0) PWP

Page 2 of 9



REFERENCE WELLPATH IDENTIFICATION			
Operator	SRC ENERGY	Slot	SLOT#09 SEELEY FEDERAL 41N-30C-L (1873'FNL & 1593'FEL, SEC.26)
Area	COLORADO	Well	SEELEY FEDERAL 41N-30C-L
Field	WELD COUNTY (NAD83,TRUE NORTH)	Wellbore	SEELEY FEDERAL 41N-30C-L PWB
Facility	SEC.26-T06N-R66W		

WELLPATH DATA (184 stations) † = interpolated/extrapolated station								Comments
MD [ft]	Inclination [°]	Azimuth [°]	TVD [ft]	Vert Sect [ft]	North [ft]	East [ft]	DLS [°/100ft]	
0.00†	0.000	69.707	0.00	0.00	0.00	0.00	0.00	
4.00	0.000	69.707	4.00	0.00	0.00	0.00	0.00	Tie On
104.00†	0.000	69.707	104.00	0.00	0.00	0.00	0.00	
200.00	0.000	69.707	200.00	0.00	0.00	0.00	0.00	End of Tangent
204.00†	0.080	69.707	204.00	0.00	0.00	0.00	2.00	
304.00†	2.080	69.707	303.98	1.79	0.65	1.77	2.00	
404.00†	4.080	69.707	403.83	6.89	2.52	6.81	2.00	
504.00†	6.080	69.707	503.43	15.30	5.59	15.11	2.00	
604.00†	8.080	69.707	602.66	27.00	9.86	26.67	2.00	
704.00†	10.080	69.707	701.40	41.98	15.34	41.48	2.00	
755.73	11.115	69.707	752.25	51.01	18.64	50.40	2.00	End of Build (XS)
804.00†	11.115	69.707	799.62	59.84	21.86	59.13	0.00	
904.00†	11.115	69.707	897.74	78.14	28.55	77.21	0.00	
1004.00†	11.115	69.707	995.86	96.44	35.23	95.29	0.00	
1104.00†	11.115	69.707	1093.99	114.74	41.92	113.37	0.00	
1204.00†	11.115	69.707	1192.11	133.04	48.60	131.45	0.00	
1304.00†	11.115	69.707	1290.24	151.34	55.29	149.53	0.00	
1404.00†	11.115	69.707	1388.36	169.63	61.98	167.61	0.00	
1504.00†	11.115	69.707	1486.49	187.93	68.66	185.69	0.00	
1604.00†	11.115	69.707	1584.61	206.23	75.35	203.77	0.00	
1704.00†	11.115	69.707	1682.74	224.53	82.03	221.85	0.00	
1804.00†	11.115	69.707	1780.86	242.83	88.72	239.93	0.00	
1904.00†	11.115	69.707	1878.98	261.13	95.40	258.01	0.00	
2004.00†	11.115	69.707	1977.11	279.43	102.09	276.09	0.00	
2104.00†	11.115	69.707	2075.23	297.73	108.77	294.17	0.00	
2204.00†	11.115	69.707	2173.36	316.03	115.46	312.25	0.00	
2304.00†	11.115	69.707	2271.48	334.33	122.15	330.34	0.00	
2404.00†	11.115	69.707	2369.61	352.63	128.83	348.42	0.00	
2504.00†	11.115	69.707	2467.73	370.93	135.52	366.50	0.00	
2604.00†	11.115	69.707	2565.85	389.22	142.20	384.58	0.00	



Planned Wellpath Report

SEELEY FEDERAL 41N-30C-L (REV-A.0) PWP

Page 3 of 9



REFERENCE WELLPATH IDENTIFICATION			
Operator	SRC ENERGY	Slot	SLOT#09 SEELEY FEDERAL 41N-30C-L (1873'FNL & 1593'FEL, SEC.26)
Area	COLORADO	Well	SEELEY FEDERAL 41N-30C-L
Field	WELD COUNTY (NAD83,TRUE NORTH)	Wellbore	SEELEY FEDERAL 41N-30C-L PWB
Facility	SEC.26-T06N-R66W		

WELLPATH DATA (184 stations) † = interpolated/extrapolated station								
MD [ft]	Inclination [°]	Azimuth [°]	TVD [ft]	Vert Sect [ft]	North [ft]	East [ft]	DLS [°/100ft]	Comments
2704.00†	11.115	69.707	2663.98	407.52	148.89	402.66	0.00	
2804.00†	11.115	69.707	2762.10	425.82	155.57	420.74	0.00	
2904.00†	11.115	69.707	2860.23	444.12	162.26	438.82	0.00	
3004.00†	11.115	69.707	2958.35	462.42	168.94	456.90	0.00	
3104.00†	11.115	69.707	3056.48	480.72	175.63	474.98	0.00	
3204.00†	11.115	69.707	3154.60	499.02	182.32	493.06	0.00	
3304.00†	11.115	69.707	3252.73	517.32	189.00	511.14	0.00	
3404.00†	11.115	69.707	3350.85	535.62	195.69	529.22	0.00	
3504.00†	11.115	69.707	3448.97	553.92	202.37	547.30	0.00	
3604.00†	11.115	69.707	3547.10	572.22	209.06	565.38	0.00	
3704.00†	11.115	69.707	3645.22	590.51	215.74	583.46	0.00	
3804.00†	11.115	69.707	3743.35	608.81	222.43	601.54	0.00	
3904.00†	11.115	69.707	3841.47	627.11	229.11	619.63	0.00	
4004.00†	11.115	69.707	3939.60	645.41	235.80	637.71	0.00	
4104.00†	11.115	69.707	4037.72	663.71	242.49	655.79	0.00	
4204.00†	11.115	69.707	4135.84	682.01	249.17	673.87	0.00	
4304.00†	11.115	69.707	4233.97	700.31	255.86	691.95	0.00	
4404.00†	11.115	69.707	4332.09	718.61	262.54	710.03	0.00	
4504.00†	11.115	69.707	4430.22	736.91	269.23	728.11	0.00	
4604.00†	11.115	69.707	4528.34	755.21	275.91	746.19	0.00	
4704.00†	11.115	69.707	4626.47	773.51	282.60	764.27	0.00	
4804.00†	11.115	69.707	4724.59	791.80	289.28	782.35	0.00	
4904.00†	11.115	69.707	4822.72	810.10	295.97	800.43	0.00	
5004.00†	11.115	69.707	4920.84	828.40	302.66	818.51	0.00	
5104.00†	11.115	69.707	5018.96	846.70	309.34	836.59	0.00	
5204.00†	11.115	69.707	5117.09	865.00	316.03	854.67	0.00	
5304.00†	11.115	69.707	5215.21	883.30	322.71	872.75	0.00	
5404.00†	11.115	69.707	5313.34	901.60	329.40	890.83	0.00	
5504.00†	11.115	69.707	5411.46	919.90	336.08	908.92	0.00	
5604.00†	11.115	69.707	5509.59	938.20	342.77	927.00	0.00	



Planned Wellpath Report

SEELEY FEDERAL 41N-30C-L (REV-A.0) PWP

Page 4 of 9



REFERENCE WELLPATH IDENTIFICATION			
Operator	SRC ENERGY	Slot	SLOT#09 SEELEY FEDERAL 41N-30C-L (1873'FNL & 1593'FEL, SEC.26)
Area	COLORADO	Well	SEELEY FEDERAL 41N-30C-L
Field	WELD COUNTY (NAD83,TRUE NORTH)	Wellbore	SEELEY FEDERAL 41N-30C-L PWB
Facility	SEC.26-T06N-R66W		

WELLPATH DATA (184 stations) † = interpolated/extrapolated station								
MD [ft]	Inclination [°]	Azimuth [°]	TVD [ft]	Vert Sect [ft]	North [ft]	East [ft]	DLS [°/100ft]	Comments
5704.00†	11.115	69.707	5607.71	956.50	349.45	945.08	0.00	
5804.00†	11.115	69.707	5705.83	974.80	356.14	963.16	0.00	
5904.00†	11.115	69.707	5803.96	993.10	362.83	981.24	0.00	
6004.00†	11.115	69.707	5902.08	1011.39	369.51	999.32	0.00	
6104.00†	11.115	69.707	6000.21	1029.69	376.20	1017.40	0.00	
6204.00†	11.115	69.707	6098.33	1047.99	382.88	1035.48	0.00	
6304.00†	11.115	69.707	6196.46	1066.29	389.57	1053.56	0.00	
6404.00†	11.115	69.707	6294.58	1084.59	396.25	1071.64	0.00	
6504.00†	11.115	69.707	6392.71	1102.89	402.94	1089.72	0.00	
6604.00†	11.115	69.707	6490.83	1121.19	409.62	1107.80	0.00	
6614.96	11.115	69.707	6501.58	1123.19	410.36	1109.78	0.00	End of Tangent (XS)
6704.00†	18.819	78.546	6587.55	1145.54	416.19	1131.94	9.00	
6804.00†	27.677	82.649	6679.34	1184.65	422.38	1170.87	9.00	
6904.00†	36.601	84.867	6763.94	1237.65	428.03	1223.70	9.00	
7004.00†	45.551	86.310	6839.25	1303.23	433.01	1289.15	9.00	
7104.00†	54.515	87.367	6903.42	1379.77	437.18	1365.60	9.00	
7204.00†	63.486	88.210	6954.87	1465.40	440.46	1451.16	9.00	
7304.00†	72.461	88.930	6992.33	1558.00	442.75	1543.74	9.00	
7404.00†	81.439	89.582	7014.89	1655.30	444.00	1641.05	9.00	
7499.41	90.006	90.174	7022.00†	1750.30	444.20	1736.10	9.00	End of 3D Arc (XS)
7504.00†	90.006	90.174	7022.00	1754.89	444.19	1740.69	0.00	
7604.00†	90.006	90.174	7021.99	1854.82	443.88	1840.69	0.00	
7704.00†	90.006	90.174	7021.98	1954.75	443.58	1940.69	0.00	
7804.00†	90.006	90.174	7021.97	2054.68	443.28	2040.69	0.00	
7904.00†	90.006	90.174	7021.96	2154.61	442.97	2140.69	0.00	
8004.00†	90.006	90.174	7021.95	2254.54	442.67	2240.69	0.00	
8104.00†	90.006	90.174	7021.94	2354.47	442.36	2340.69	0.00	
8204.00†	90.006	90.174	7021.93	2454.40	442.06	2440.69	0.00	
8304.00†	90.006	90.174	7021.92	2554.33	441.75	2540.69	0.00	
8404.00†	90.006	90.174	7021.91	2654.27	441.45	2640.69	0.00	



Planned Wellpath Report

SEELEY FEDERAL 41N-30C-L (REV-A.0) PWP

Page 5 of 9



REFERENCE WELLPATH IDENTIFICATION			
Operator	SRC ENERGY	Slot	SLOT#09 SEELEY FEDERAL 41N-30C-L (1873'FNL & 1593'FEL, SEC.26)
Area	COLORADO	Well	SEELEY FEDERAL 41N-30C-L
Field	WELD COUNTY (NAD83,TRUE NORTH)	Wellbore	SEELEY FEDERAL 41N-30C-L PWB
Facility	SEC.26-T06N-R66W		

WELLPATH DATA (184 stations) † = interpolated/extrapolated station								
MD [ft]	Inclination [°]	Azimuth [°]	TVD [ft]	Vert Sect [ft]	North [ft]	East [ft]	DLS [°/100ft]	Comments
8504.00†	90.006	90.174	7021.90	2754.20	441.14	2740.69	0.00	
8604.00†	90.006	90.174	7021.89	2854.13	440.84	2840.69	0.00	
8704.00†	90.006	90.174	7021.88	2954.06	440.54	2940.69	0.00	
8804.00†	90.006	90.174	7021.87	3053.99	440.23	3040.69	0.00	
8904.00†	90.006	90.174	7021.86	3153.92	439.93	3140.69	0.00	
9004.00†	90.006	90.174	7021.85	3253.85	439.62	3240.69	0.00	
9104.00†	90.006	90.174	7021.84	3353.78	439.32	3340.68	0.00	
9204.00†	90.006	90.174	7021.83	3453.71	439.01	3440.68	0.00	
9304.00†	90.006	90.174	7021.82	3553.64	438.71	3540.68	0.00	
9404.00†	90.006	90.174	7021.82	3653.57	438.40	3640.68	0.00	
9504.00†	90.006	90.174	7021.81	3753.50	438.10	3740.68	0.00	
9604.00†	90.006	90.174	7021.80	3853.43	437.80	3840.68	0.00	
9704.00†	90.006	90.174	7021.79	3953.36	437.49	3940.68	0.00	
9804.00†	90.006	90.174	7021.78	4053.29	437.19	4040.68	0.00	
9904.00†	90.006	90.174	7021.77	4153.22	436.88	4140.68	0.00	
10004.00†	90.006	90.174	7021.76	4253.15	436.58	4240.68	0.00	
10104.00†	90.006	90.174	7021.75	4353.08	436.27	4340.68	0.00	
10204.00†	90.006	90.174	7021.74	4453.01	435.97	4440.68	0.00	
10304.00†	90.006	90.174	7021.73	4552.94	435.66	4540.68	0.00	
10404.00†	90.006	90.174	7021.72	4652.87	435.36	4640.68	0.00	
10504.00†	90.006	90.174	7021.71	4752.80	435.06	4740.68	0.00	
10604.00†	90.006	90.174	7021.70	4852.73	434.75	4840.68	0.00	
10704.00†	90.006	90.174	7021.69	4952.66	434.45	4940.68	0.00	
10804.00†	90.006	90.174	7021.68	5052.59	434.14	5040.68	0.00	
10904.00†	90.006	90.174	7021.67	5152.52	433.84	5140.68	0.00	
11004.00†	90.006	90.174	7021.66	5252.45	433.53	5240.68	0.00	
11104.00†	90.006	90.174	7021.65	5352.39	433.23	5340.68	0.00	
11204.00†	90.006	90.174	7021.64	5452.32	432.92	5440.68	0.00	
11304.00†	90.006	90.174	7021.63	5552.25	432.62	5540.67	0.00	
11404.00†	90.006	90.174	7021.62	5652.18	432.32	5640.67	0.00	



Planned Wellpath Report

SEELEY FEDERAL 41N-30C-L (REV-A.0) PWP

Page 6 of 9



REFERENCE WELLPATH IDENTIFICATION			
Operator	SRC ENERGY	Slot	SLOT#09 SEELEY FEDERAL 41N-30C-L (1873'FNL & 1593'FEL, SEC.26)
Area	COLORADO	Well	SEELEY FEDERAL 41N-30C-L
Field	WELD COUNTY (NAD83,TRUE NORTH)	Wellbore	SEELEY FEDERAL 41N-30C-L PWB
Facility	SEC.26-T06N-R66W		

WELLPATH DATA (184 stations) † = interpolated/extrapolated station								
MD [ft]	Inclination [°]	Azimuth [°]	TVD [ft]	Vert Sect [ft]	North [ft]	East [ft]	DLS [°/100ft]	Comments
11504.00†	90.006	90.174	7021.61	5752.11	432.01	5740.67	0.00	
11604.00†	90.006	90.174	7021.60	5852.04	431.71	5840.67	0.00	
11704.00†	90.006	90.174	7021.59	5951.97	431.40	5940.67	0.00	
11804.00†	90.006	90.174	7021.58	6051.90	431.10	6040.67	0.00	
11904.00†	90.006	90.174	7021.57	6151.83	430.79	6140.67	0.00	
12004.00†	90.006	90.174	7021.56	6251.76	430.49	6240.67	0.00	
12104.00†	90.006	90.174	7021.55	6351.69	430.18	6340.67	0.00	
12204.00†	90.006	90.174	7021.54	6451.62	429.88	6440.67	0.00	
12304.00†	90.006	90.174	7021.53	6551.55	429.58	6540.67	0.00	
12404.00†	90.006	90.174	7021.52	6651.48	429.27	6640.67	0.00	
12504.00†	90.006	90.174	7021.51	6751.41	428.97	6740.67	0.00	
12604.00†	90.006	90.174	7021.50	6851.34	428.66	6840.67	0.00	
12704.00†	90.006	90.174	7021.49	6951.27	428.36	6940.67	0.00	
12804.00†	90.006	90.174	7021.48	7051.20	428.05	7040.67	0.00	
12904.00†	90.006	90.174	7021.48	7151.13	427.75	7140.67	0.00	
13004.00†	90.006	90.174	7021.47	7251.06	427.44	7240.67	0.00	
13104.00†	90.006	90.174	7021.46	7350.99	427.14	7340.67	0.00	
13204.00†	90.006	90.174	7021.45	7450.92	426.84	7440.67	0.00	
13304.00†	90.006	90.174	7021.44	7550.85	426.53	7540.67	0.00	
13404.00†	90.006	90.174	7021.43	7650.78	426.23	7640.66	0.00	
13504.00†	90.006	90.174	7021.42	7750.71	425.92	7740.66	0.00	
13604.00†	90.006	90.174	7021.41	7850.64	425.62	7840.66	0.00	
13704.00†	90.006	90.174	7021.40	7950.57	425.31	7940.66	0.00	
13804.00†	90.006	90.174	7021.39	8050.51	425.01	8040.66	0.00	
13904.00†	90.006	90.174	7021.38	8150.44	424.70	8140.66	0.00	
14004.00†	90.006	90.174	7021.37	8250.37	424.40	8240.66	0.00	
14104.00†	90.006	90.174	7021.36	8350.30	424.10	8340.66	0.00	
14204.00†	90.006	90.174	7021.35	8450.23	423.79	8440.66	0.00	
14304.00†	90.006	90.174	7021.34	8550.16	423.49	8540.66	0.00	
14404.00†	90.006	90.174	7021.33	8650.09	423.18	8640.66	0.00	



Planned Wellpath Report

SEELEY FEDERAL 41N-30C-L (REV-A.0) PWP

Page 7 of 9



REFERENCE WELLPATH IDENTIFICATION			
Operator	SRC ENERGY	Slot	SLOT#09 SEELEY FEDERAL 41N-30C-L (1873'FNL & 1593'FEL, SEC.26)
Area	COLORADO	Well	SEELEY FEDERAL 41N-30C-L
Field	WELD COUNTY (NAD83,TRUE NORTH)	Wellbore	SEELEY FEDERAL 41N-30C-L PWB
Facility	SEC.26-T06N-R66W		

WELLPATH DATA (184 stations) † = interpolated/extrapolated station								
MD [ft]	Inclination [°]	Azimuth [°]	TVD [ft]	Vert Sect [ft]	North [ft]	East [ft]	DLS [°/100ft]	Comments
14504.00†	90.006	90.174	7021.32	8750.02	422.88	8740.66	0.00	
14604.00†	90.006	90.174	7021.31	8849.95	422.57	8840.66	0.00	
14704.00†	90.006	90.174	7021.30	8949.88	422.27	8940.66	0.00	
14804.00†	90.006	90.174	7021.29	9049.81	421.96	9040.66	0.00	
14904.00†	90.006	90.174	7021.28	9149.74	421.66	9140.66	0.00	
15004.00†	90.006	90.174	7021.27	9249.67	421.35	9240.66	0.00	
15104.00†	90.006	90.174	7021.26	9349.60	421.05	9340.66	0.00	
15204.00†	90.006	90.174	7021.25	9449.53	420.75	9440.66	0.00	
15304.00†	90.006	90.174	7021.24	9549.46	420.44	9540.66	0.00	
15404.00†	90.006	90.174	7021.23	9649.39	420.14	9640.66	0.00	
15504.00†	90.006	90.174	7021.22	9749.32	419.83	9740.66	0.00	
15604.00†	90.006	90.174	7021.21	9849.25	419.53	9840.65	0.00	
15704.00†	90.006	90.174	7021.20	9949.18	419.22	9940.65	0.00	
15804.00†	90.006	90.174	7021.19	10049.11	418.92	10040.65	0.00	
15904.00†	90.006	90.174	7021.18	10149.04	418.61	10140.65	0.00	
16004.00†	90.006	90.174	7021.17	10248.97	418.31	10240.65	0.00	
16104.00†	90.006	90.174	7021.16	10348.90	418.01	10340.65	0.00	
16204.00†	90.006	90.174	7021.16	10448.83	417.70	10440.65	0.00	
16304.00†	90.006	90.174	7021.15	10548.76	417.40	10540.65	0.00	
16404.00†	90.006	90.174	7021.14	10648.69	417.09	10640.65	0.00	
16504.00†	90.006	90.174	7021.13	10748.62	416.79	10740.65	0.00	
16604.00†	90.006	90.174	7021.12	10848.56	416.48	10840.65	0.00	
16704.00†	90.006	90.174	7021.11	10948.49	416.18	10940.65	0.00	
16804.00†	90.006	90.174	7021.10	11048.42	415.87	11040.65	0.00	
16904.00†	90.006	90.174	7021.09	11148.35	415.57	11140.65	0.00	
17004.00†	90.006	90.174	7021.08	11248.28	415.27	11240.65	0.00	
17104.00†	90.006	90.174	7021.07	11348.21	414.96	11340.65	0.00	
17204.00†	90.006	90.174	7021.06	11448.14	414.66	11440.65	0.00	
17304.00†	90.006	90.174	7021.05	11548.07	414.35	11540.65	0.00	
17404.00†	90.006	90.174	7021.04	11648.00	414.05	11640.65	0.00	



Planned Wellpath Report

SEELEY FEDERAL 41N-30C-L (REV-A.0) PWP

Page 8 of 9



REFERENCE WELLPATH IDENTIFICATION			
Operator	SRC ENERGY	Slot	SLOT#09 SEELEY FEDERAL 41N-30C-L (1873'FNL & 1593'FEL, SEC.26)
Area	COLORADO	Well	SEELEY FEDERAL 41N-30C-L
Field	WELD COUNTY (NAD83,TRUE NORTH)	Wellbore	SEELEY FEDERAL 41N-30C-L PWB
Facility	SEC.26-T06N-R66W		

WELLPATH DATA (184 stations) † = interpolated/extrapolated station								
MD [ft]	Inclination [°]	Azimuth [°]	TVD [ft]	Vert Sect [ft]	North [ft]	East [ft]	DLS [°/100ft]	Comments
17504.00†	90.006	90.174	7021.03	11747.93	413.74	11740.65	0.00	
17604.00†	90.006	90.174	7021.02	11847.86	413.44	11840.65	0.00	
17704.00†	90.006	90.174	7021.01	11947.79	413.13	11940.65	0.00	
17803.02	90.006	90.174	7021.00 ²	12046.74	412.83	12039.66	0.00	End of Tangent (XS)

HOLE & CASING SECTIONS									
- Ref Wellbore: SEELEY FEDERAL 41N-30C-L PWB					Ref Wellpath: SEELEY FEDERAL 41N-30C-L (REV-A.0) PWP				
String/Diameter	Start MD [ft]	End MD [ft]	Interval [ft]	Start TVD [ft]	End TVD [ft]	Start N/S [ft]	Start E/W [ft]	End N/S [ft]	End E/W [ft]
13.5in Open Hole	4.00	1750.00	1746.00	4.00	1727.87	0.00	0.00	85.11	230.17
9.625in Casing Surface	4.00	1750.00	1746.00	4.00	1727.87	0.00	0.00	85.11	230.17
8.5in Open Hole	1750.00	17803.02	16053.02	1727.87	N/A	85.11	230.17	N/A	N/A



Planned Wellpath Report

SEELEY FEDERAL 41N-30C-L (REV-A.0) PWP

Page 9 of 9



REFERENCE WELLPATH IDENTIFICATION			
Operator	SRC ENERGY	Slot	SLOT#09 SEELEY FEDERAL 41N-30C-L (1873'FNL & 1593'FEL, SEC.26)
Area	COLORADO	Well	SEELEY FEDERAL 41N-30C-L
Field	WELD COUNTY (NAD83,TRUE NORTH)	Wellbore	SEELEY FEDERAL 41N-30C-L PWB
Facility	SEC.26-T06N-R66W		

TARGETS									
Name	MD [ft]	TVD [ft]	North [ft]	East [ft]	Grid East [US ft]	Grid North [US ft]	Latitude	Longitude	Shape
EAST HALF OF SEC.02-T05N-R66W		-22.00	160.00	1.39	3211308.44	1412009.18	40°27'42.779"N	104°44'26.117"W	polygon
EAST HALF OF SEC.26-T06N-R66W		-22.00	160.00	1.39	3211308.44	1412009.18	40°27'42.779"N	104°44'26.117"W	polygon
EAST HALF OF SEC.35-T06N-R66W		-22.00	160.00	1.39	3211308.44	1412009.18	40°27'42.779"N	104°44'26.117"W	polygon
SEC.25-T06N-R66W		-22.00	160.00	1.39	3211308.44	1412009.18	40°27'42.779"N	104°44'26.117"W	polygon
SEC.30-T06N-R65W		-22.00	160.00	1.39	3211308.44	1412009.18	40°27'42.779"N	104°44'26.117"W	polygon
SOUTH HALF OF SEC.19-T06N-R65W		-22.00	160.00	1.39	3211308.44	1412009.18	40°27'42.779"N	104°44'26.117"W	polygon
SOUTH HALF OF SEC.24-T06N-R66W		-22.00	160.00	1.39	3211308.44	1412009.18	40°27'42.779"N	104°44'26.117"W	polygon
2) SEELEY FEDERAL 41N-30C-L BHL ON PLAT (1425'FNL & 150'FEL, SEC.30)	17803.02	7021.00	412.83	12039.66	3223343.64	1412365.09	40°27'45.248"N	104°41'50.374"W	circle
1) SEELEY FEDERAL 41N-30C-L TOP OF PROD ON PLAT (1427'FNL & 150'FWL, SEC.25)	7499.41	7022.00	444.20	1736.10	3213040.59	1412308.22	40°27'45.587"N	104°44'03.674"W	circle

SURVEY PROGRAM -				
Ref Wellbore: SEELEY FEDERAL 41N-30C-L PWB		Ref Wellpath: SEELEY FEDERAL 41N-30C-L (REV-A.0) PWP		
Start MD [ft]	End MD [ft]	Positional Uncertainty Model	Log Name/Comment	Wellbore
4.00	1750.00	BHI NaviTrak (Rotating+Axial Corr)		SEELEY FEDERAL 41N-30C-L PWB
1750.00	17803.02	BHI AutoTrak Curve (IFR1, Short)		SEELEY FEDERAL 41N-30C-L PWB