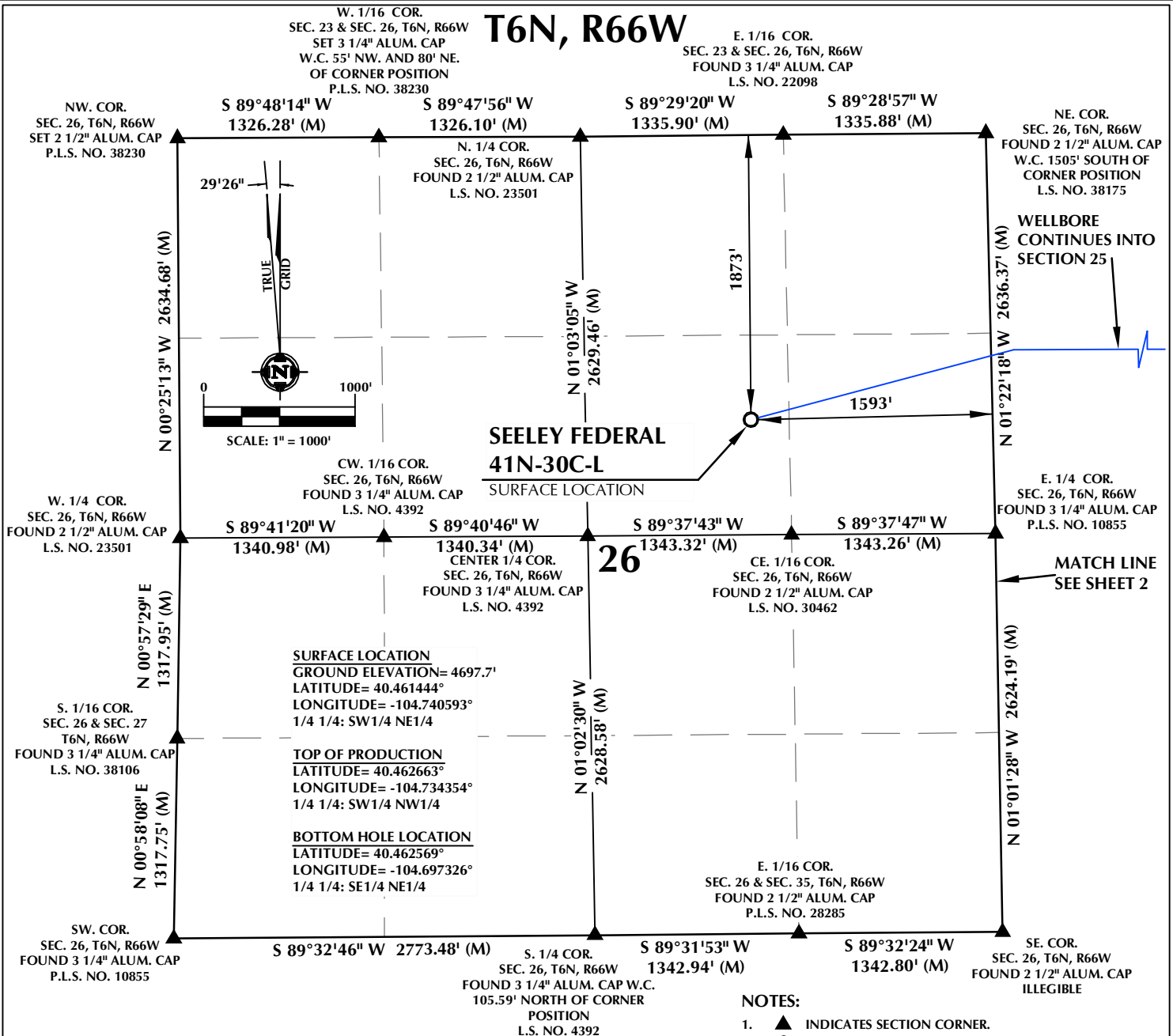


T6N, R66W



CERTIFICATE OF SURVEYOR:

THIS IS TO CERTIFY THAT THE ABOVE MAP WAS PREPARED FROM FIELD NOTES OF ACTUAL SURVEY MADE BY ME OR UNDER MY SUPERVISION AND THAT THE SAME ARE TRUE AND CORRECT TO THE BEST OF MY KNOWLEDGE AND BELIEF. THIS CERTIFICATE DOES NOT REPRESENT A LAND SURVEY PLAT OR IMPROVEMENT SURVEY PLAT AS DEFINED BY C.R.S. 19-513-102 AND CANNOT BE RELIED UPON TO DETERMINE OWNERSHIP.

JOHN R. SLAUGH
PROFESSIONAL LAND SURVEYOR
COLORADO REGISTRATION NUMBER 38230

NOTICE:
ACCORDING TO COLORADO STATE LAW YOU MUST COMMENCE LEGAL ACTION BASED UPON ANY DEFECT IN THIS SURVEY WITHIN THREE YEARS AFTER YOU FIRST DISCOVER SUCH DEFECT. IN NO EVENT MAY ANY ACTION BASED UPON ANY DEFECT IN THIS SURVEY BE COMMENCED MORE THAN TEN YEARS FROM THE DATE ON THE CERTIFICATION SHOWN HEREON.

WELL DISTANCES:

BUILDING: ±1168' S
BUILDING UNIT: ±1282' S
HIGH OCCUPANCY BUILDING UNIT: ±5078' SW
DESIGNATED OUTSIDE ACTIVITY AREA: 5280'+
PUBLIC ROAD: ±990' NE
ABOVE GROUND UTILITY: ±983' NE
RAILROAD: 5280'+
PROPERTY LINE: ±252' E

NOTES:

- ▲ INDICATES SECTION CORNER.
- INDICATES CALCULATED CORNER.
- DRAWING LATITUDE AND LONGITUDE COORDINATES ARE NAD 83 (2011)(EPOCH:2010).
- ELEVATION BASED ON NAVD88 (GEOID12B).
- BASIS OF BEARING DERIVED FROM COLORADO COORDINATE SYSTEM OF 1983 NORTH ZONE.
- ALL MEASURED DISTANCES ARE GRID.
COMBINED SCALE FACTOR: .99974177 CALCULATED FROM THE E. 1/4 CORNER OF SECTION 26, T6N, R66W.
- OPERATOR: PRESTON KNUTSEN / PDOP = 1.2.
- SEE ADDENDUM TO WELL LOCATION CERTIFICATE FOR EXISTING IMPROVEMENTS WITHIN 500' OF THE WELL PAD.
- WELL FOOTAGES ARE MEASURED AT RIGHT ANGLES TO THE SECTION LINES.
- THE BOTTOM OF HOLE BEARS N89°40'59"E, 10303' FROM THE TOP OF PRODUCTION ZONE.

WELL PAD - CHALK-SEELEY FEDERAL 7-26 PAD

SEELEY FEDERAL 41N-30C-L
WELL LOCATION CERTIFICATE
1873' FNL & 1593' FEL SWNE (SURFACE)
LOCATED IN SECTION 26
1427' FNL & 150' FWL SWNW (TOP OF PRODUCTION)
LOCATED IN SECTION 25
T6N, R66W, 6TH P.M.
1425' FNL & 150' FEL SENE (BOTTOM)
LOCATED IN SECTION 30
T6N, R65W, 6TH P.M.
WELD COUNTY, COLORADO



SRC ENERGY

1675 Broadway, Suite 2600
Denver, Colorado 80202



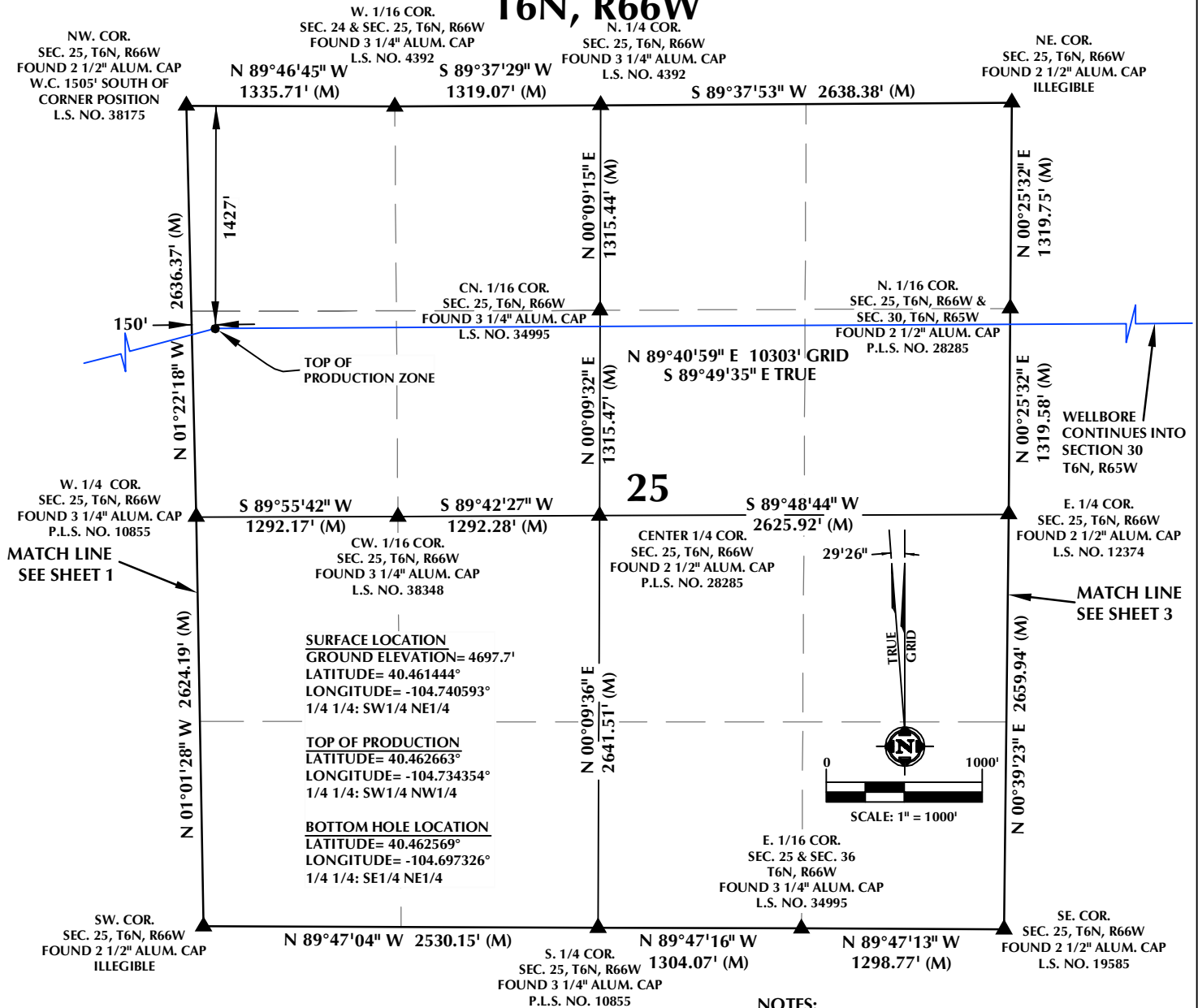
CONSULTING, LLC

SHERIDAN OFFICE
1095 Saberton Avenue
Sheridan, Wyoming 82801
Phone 307-674-0609

LOVELAND OFFICE
1635 Foxtrail Drive, Suite 204
Loveland, Colorado 80538
Phone 970-776-4331

DRAFTED BY:	LMO	CHECKED BY:	JRS	SHEET NO:
DATE DRAFTED:	9/26/17	DATE SURVEYED:	7/7/17	1
REVISED:	2/28/18	FILE NAME:	17-41	1 OF 3

T6N, R66W



CERTIFICATE OF SURVEYOR:

THIS IS TO CERTIFY THAT THE ABOVE PLAT WAS PREPARED FROM FIELD NOTES OF ACTUAL SURVEY MADE BY ME OR UNDER MY SUPERVISION AND THAT THE SAME ARE TRUE AND CORRECT TO THE BEST OF MY KNOWLEDGE AND BELIEF. THIS CERTIFICATE DOES NOT REPRESENT A LAND SURVEY PLAT OR IMPROVEMENT SURVEY PLAT AS DEFINED BY C.R.S. 18-5-102 AND CANNOT BE RELIED UPON TO DETERMINE OWNERSHIP.

John R. Slaugh
 JOHN R. SLAUGH
 PROFESSIONAL LAND SURVEYOR
 COLORADO REGISTRATION NUMBER 38230
 2/28/18

NOTICE:
 ACCORDING TO COLORADO STATE LAW YOU MUST COMMENCE A LEGAL ACTION BASED UPON ANY DEFECT IN THIS SURVEY WITHIN THREE YEARS AFTER YOU FIRST DISCOVER SUCH DEFECT. IN NO EVENT MAY ANY ACTION BASED UPON ANY DEFECT IN THIS SURVEY BE COMMENCED MORE THAN TEN YEARS FROM THE DATE ON THE CERTIFICATION SHOWN HEREON.

WELL DISTANCES:

BUILDING: ±1168' S
 BUILDING UNIT: ±1282' S
 HIGH OCCUPANCY BUILDING UNIT: ±5078' SW
 DESIGNATED OUTSIDE ACTIVITY AREA: 5280'+
 PUBLIC ROAD: ±990' NE
 ABOVE GROUND UTILITY: ±983' NE
 RAILROAD: 5280'+
 PROPERTY LINE: ±252' E

NOTES:

- ▲ INDICATES SECTION CORNER.
- INDICATES CALCULATED CORNER.
- DRAWING LATITUDE AND LONGITUDE COORDINATES ARE NAD 83 (2011)(EPOCH:2010).
- ELEVATION BASED ON NAVD88 (GEOID12B).
- BASIS OF BEARING DERIVED FROM COLORADO COORDINATE SYSTEM OF 1983 NORTH ZONE.
- ALL MEASURED DISTANCES ARE GRID.
- COMBINED SCALE FACTOR: .99974177 CALCULATED FROM THE E. 1/4 CORNER OF SECTION 26, T6N, R66W.
- OPERATOR: PRESTON KNUTSEN / PDOP = 1.2.
- SEE ADDENDUM TO WELL LOCATION CERTIFICATE FOR EXISTING IMPROVEMENTS WITHIN 500' OF THE WELL PAD.
- WELL FOOTAGES ARE MEASURED AT RIGHT ANGLES TO THE SECTION LINES.
- THE BOTTOM OF HOLE BEARS N89°40'59"E, 10303' FROM THE TOP OF PRODUCTION ZONE.

WELL PAD - CHALK-SEELEY FEDERAL 7-26 PAD

SEELEY FEDERAL 41N-30C-L
 WELL LOCATION CERTIFICATE
 1873' FNL & 1593' FEL SWNE (SURFACE)
 LOCATED IN SECTION 26
 1427' FNL & 150' FWL SWNW (TOP OF PRODUCTION)
 LOCATED IN SECTION 25
 T6N, R66W, 6TH P.M.
 1425' FNL & 150' FEL SENE (BOTTOM)
 LOCATED IN SECTION 30
 T6N, R65W, 6TH P.M.
 WELD COUNTY, COLORADO



SRC ENERGY

1675 Broadway, Suite 2600
 Denver, Colorado 80202

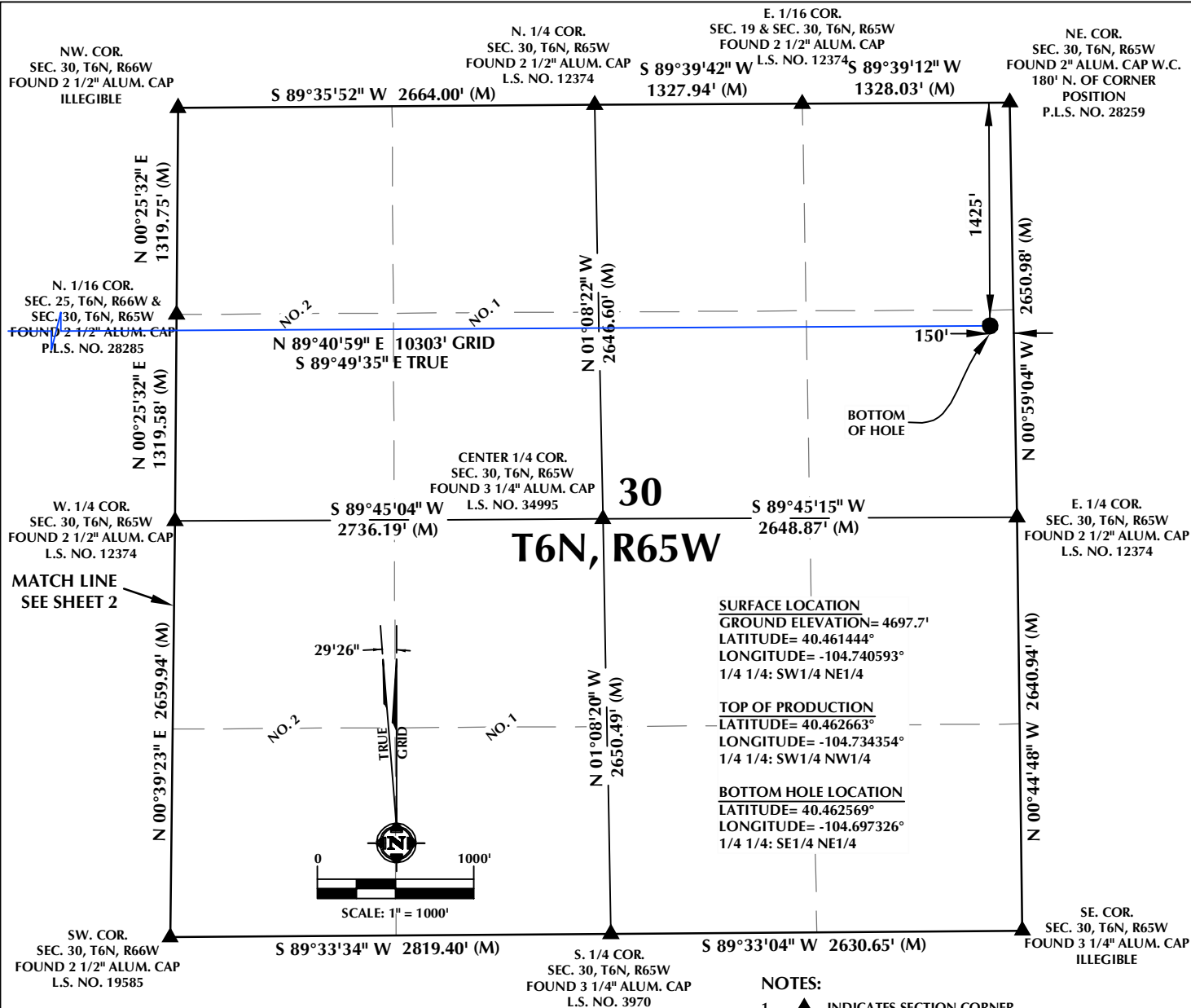


CONSULTING, LLC

SHERIDAN OFFICE
 1095 Saberton Avenue
 Sheridan, Wyoming 82801
 Phone 307-674-0609

LOVELAND OFFICE
 1635 Foxtrail Drive, Suite 204
 Loveland, Colorado 80538
 Phone 970-776-4331

DRAFTED BY:	LMO	CHECKED BY:	JRS	SHEET NO:
DATE DRAFTED:	9/26/17	DATE SURVEYED:	7/7/17	2
REVISED:	2/28/18	FILE NAME:	17-41	2 OF 3



CERTIFICATE OF SURVEYOR:

THIS IS TO CERTIFY THAT THE ABOVE MAP WAS PREPARED FROM FIELD NOTES OF ACTUAL SURVEY MADE BY ME OR UNDER MY SUPERVISION AND THAT THE SAME ARE TRUE AND CORRECT TO THE BEST OF MY KNOWLEDGE AND BELIEF. THIS CERTIFICATE DOES NOT REPRESENT A LAND SURVEY PLAT OR IMPROVEMENT SURVEY PLAT AS DEFINED BY C.R.S. 38-512-302 AND CANNOT BE RELIED UPON TO DETERMINE OWNERSHIP.

John R. Slaugh
 JOHN R. SLAUGH
 PROFESSIONAL LAND SURVEYOR
 COLORADO REGISTRATION NUMBER 38230

NOTICE:
 ACCORDING TO COLORADO STATE LAW YOU MUST COMMENCE LEGAL ACTION BASED UPON ANY DEFECT IN THIS SURVEY WITHIN THREE YEARS AFTER YOU FIRST DISCOVER SUCH DEFECT. IN NO EVENT MAY ANY ACTION BASED UPON ANY DEFECT IN THIS SURVEY BE COMMENCED MORE THAN TEN YEARS FROM THE DATE ON THE CERTIFICATION SHOWN HEREON.

WELL DISTANCES:

BUILDING: ±1168' S
 BUILDING UNIT: ±1282' S
 HIGH OCCUPANCY BUILDING UNIT: ±5078' SW
 DESIGNATED OUTSIDE ACTIVITY AREA: 5280'+
 PUBLIC ROAD: ±990' NE
 ABOVE GROUND UTILITY: ±983' NE
 RAILROAD: 5280'+
 PROPERTY LINE: ±252' E

NOTES:

1. ▲ INDICATES SECTION CORNER.
2. ● INDICATES CALCULATED CORNER.
3. DRAWING LATITUDE AND LONGITUDE COORDINATES ARE NAD 83 (2011)(EPOCH:2010).
4. ELEVATION BASED ON NAVD88 (GEOID12B).
5. BASIS OF BEARING DERIVED FROM COLORADO COORDINATE SYSTEM OF 1983 NORTH ZONE.
6. ALL MEASURED DISTANCES ARE GRID. COMBINED SCALE FACTOR: .99974177 CALCULATED FROM THE E. 1/4 CORNER OF SECTION 26, T6N, R66W.
7. OPERATOR: PRESTON KNUSEN / PDOP = 1.2.
8. SEE ADDENDUM TO WELL LOCATION CERTIFICATE FOR EXISTING IMPROVEMENTS WITHIN 500' OF THE WELL PAD.
9. WELL FOOTAGES ARE MEASURED AT RIGHT ANGLES TO THE SECTION LINES.
10. THE BOTTOM OF HOLE BEARS N89°40'59"E, 10303' FROM THE TOP OF PRODUCTION ZONE.
11. NO. 1 & NO. 2 AS SHOWN HEREON ARE GOVERNMENT LOTS 1 & 2 PER THE ORIGINAL GLO SURVEY

WELL PAD - CHALK-SEELEY FEDERAL 7-26 PAD

SEELEY FEDERAL 41N-30C-1
 WELL LOCATION CERTIFICATE
 1873' FNL & 1593' FEL SWNE (SURFACE)
 LOCATED IN SECTION 26
 1427' FNL & 150' FWL SWNW (TOP OF PRODUCTION)
 LOCATED IN SECTION 25
 T6N, R66W, 6TH P.M.
 1425' FNL & 150' FEL SENE (BOTTOM)
 LOCATED IN SECTION 30
 T6N, R65W, 6TH P.M.
 WELD COUNTY, COLORADO



SRC ENERGY
 1675 Broadway, Suite 2600
 Denver, Colorado 80202



CONSULTING, LLC

SHERIDAN OFFICE
 1095 Saberton Avenue
 Sheridan, Wyoming 82801
 Phone 307-674-0609

LOVELAND OFFICE
 1635 Foxtrail Drive, Suite 204
 Loveland, Colorado 80538
 Phone 970-776-4331

DRAFTED BY:	LMO	CHECKED BY:	JRS	SHEET NO:
DATE DRAFTED:	9/26/17	DATE SURVEYED:	7/7/17	3
REVISED:	2/28/18	FILE NAME:	17-41	3 OF 3