

# HALLIBURTON

iCem<sup>®</sup> Service

## **TERRA ENERGY PARTNERS**

**For: Terra**

Date: Sunday, June 24, 2018

**PA 431-26 Surface PJR**

**API #: 05-045-23722**

Sincerely,  
CHRIS SMITH

## 1.0 Real-Time Job Summary

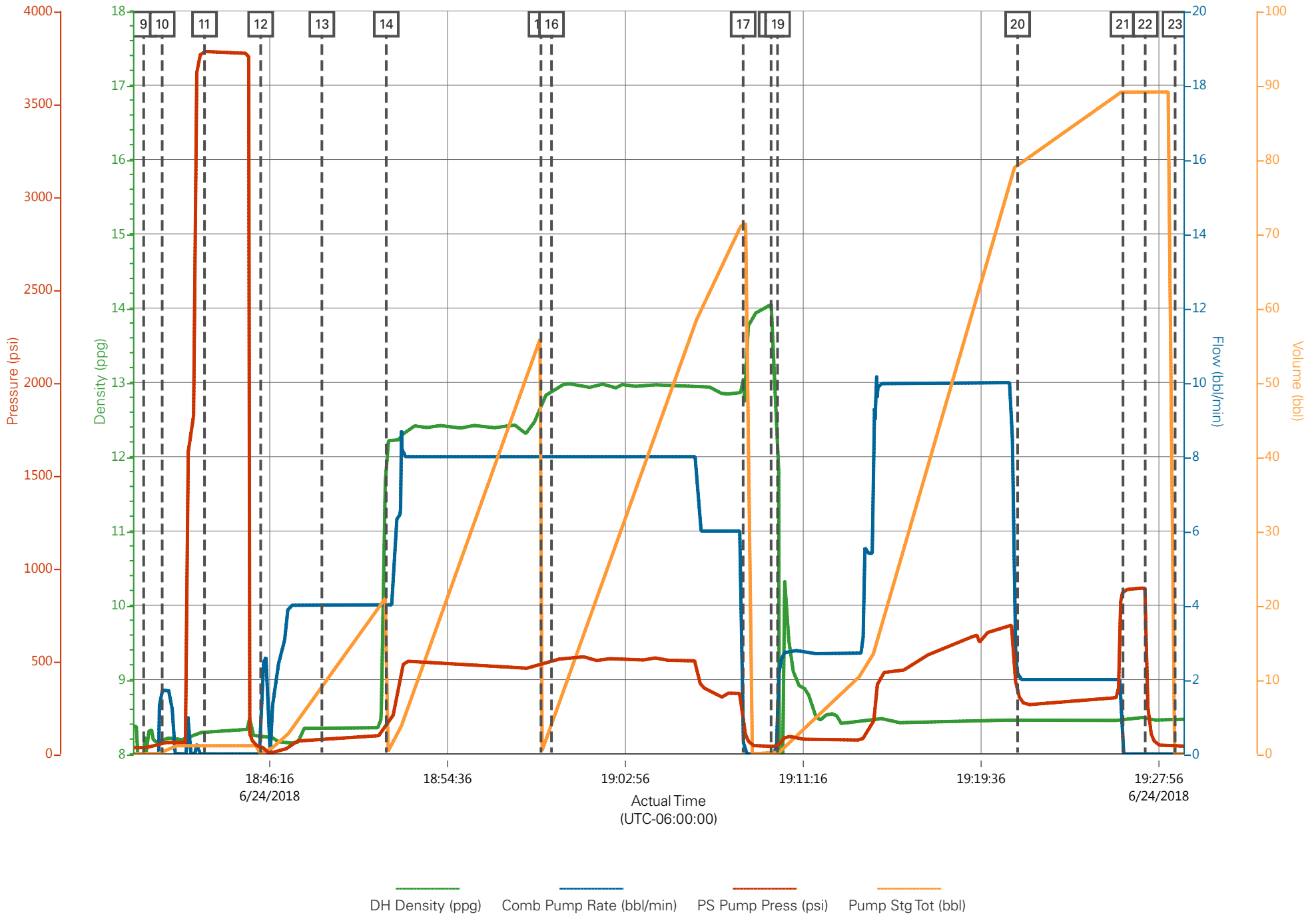
### 1.1 Job Event Log

Type	Seq. No.	Graph Label	Date	Time	Source	PS Pump Press <i>(psi)</i>	DH Density <i>(ppg)</i>	Comb Pump Rate <i>(bbl/min)</i>	Pump Stg Tot <i>(bbl)</i>	Comments
Event	1	Call Out	6/24/2018	13:30:00	USER					REQUESTED ON LOCATION @ 1600
Event	2	Pre-Convoy Safety Meeting	6/24/2018	14:00:00	USER					ALL HES PRESENT
Event	3	Crew Leave Yard	6/24/2018	14:30:00	USER					1 F550, 1 PUMP TRUCK & 1 660 BULK TURCK
Event	4	Arrive at Location from Service Center	6/24/2018	15:30:00	USER					RIG RUNNING CASING
Event	5	Assessment Of Location Safety Meeting	6/24/2018	15:35:00	USER					MET WITH COMP REP AND WENT OVER NUMBERS AND JOB PROCEDURE. WALKED AROUND LOCATION AND COLLECTED WATER SAMPLE (PH- 7, CHLORIDES- 0, TEMP- 71F). COMP REP WAS OFFERED SDS FOR ALL CHEMICLES USED BY HES.
Event	6	Pre-Rig Up Safety Meeting	6/24/2018	15:40:00	USER					ALL HES PRESENT
Event	7	Rig-Up Completed	6/24/2018	16:00:00	USER					HES RIGGED UP EQUIPMENT WITHOUT ENTERING RED ZONE.
Event	8	Pre-Job Safety Meeting	6/24/2018	18:19:59	USER					ALL HES AND RIG CREW PRESENT
Event	9	Start Job	6/24/2018	18:40:22	USER					TD 1163', TP 1156.33', SJ 42.66', OH 13.5'', CSG 9.625'' 36#, MUD 9.6 PPG. RIG CIRCULATED WELL FOR APPROX 1 HRS.

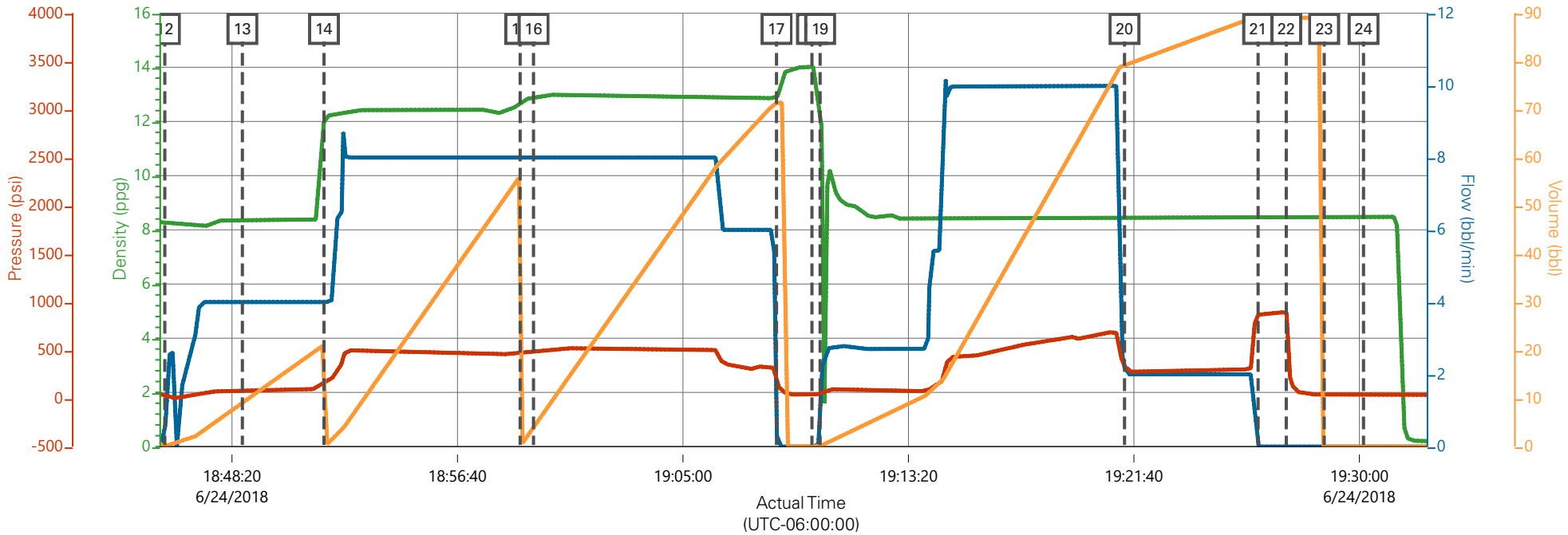
Event	10	Prime Pumps	6/24/2018	18:41:14	USER	58.00	8.33	1.00	2.00	8.33 PPG FRESH WATER
Event	11	Test Lines	6/24/2018	18:43:13	COM6	3783.00	8.33	0.50	0.50	ALL LINES HELD PRESSURE AT 3721 PSI
Event	12	Pump Spacer 1	6/24/2018	18:45:51	COM6	136.00	8.33	4.00	20.00	8.33 PPG FRESH WATER (20 BBL)
Event	13	Check Weight	6/24/2018	18:48:43	COM6					WEIGHT VERIFIED VIA PRESSUREIZED MUD SCALES
Event	14	Pump Lead Cement	6/24/2018	18:51:44	COM6	460.00	12.30	8.00	53.00	VARICEM CEMENT 125 SKS (53 BBLs), 12.3 PPG, 2.38 FT3/SK, 13.77 GAL/SK
Event	15	Pump Tail Cement	6/24/2018	18:58:59	COM6	476.00	12.80	8.00	66.10	VARICEM CEMENT 175 SKS (66 BBLs), 12.8 PPG, 2.11 FT3/SK, 11.78 GAL/SK.
Event	16	Check Weight	6/24/2018	18:59:29	COM6					WEIGHT VERIFIED VIA PRESSUREIZED MUD SCALES
Event	17	Shutdown	6/24/2018	19:08:27	USER					END OF CMT
Event	18	Drop Top Plug	6/24/2018	19:09:46	USER					PLUG WENT, VERIFIED BY CO REP
Event	19	Pump Displacement	6/24/2018	19:10:04	COM6	676.00	8.32	10.00	76.10	8.34 PPG FRESH WATER (86.1 BBLs)
Event	20	Slow Rate	6/24/2018	19:21:19	USER	331.00	8.33	2.00	10.00	SLOW RATE TO 2 BPM PER CO REP TO LAND PLUG
Event	21	Bump Plug	6/24/2018	19:26:15	USER	305.00	8.33	2.00	86.10	LAND PLUG AT 305 PSI, BROUGHT UP TO 893 PSI FOR A 10 MIN CSG TEST.
Event	22	Check Floats	6/24/2018	19:27:18	USER	893.00	8.33	0.00	86.10	FLOATS HELD, 1 BBL BACK TO TRUCK
Event	23	End Job	6/24/2018	19:28:42	COM6					RETURNS THROUGHOUT JOB, 15 BBL OF CEMENT BACK TO SURFACE
Event	24	Post-Job Safety Meeting (Pre Rig-Down)	6/24/2018	19:30:09	USER					ALL HES PRESENT

Event	25	Rig-Down Completed	6/24/2018	19:52:33	USER	ALL HES PRESENT
Event	26	Pre-Convoy Safety Meeting	6/24/2018	19:55:00	USER	ALL HES PRESENT
Event	27	Crew Leave Location	6/24/2018	20:00:00	USER	THANK YOU FOR CHOOSING HALLIBURTON CEMENT, CHRIS SMITH AND CREW

# TEP - PA 431-26 - 9.625" SURFACE



TEP - PA 431-26 - 9.625" SURFACE



DH Density (ppg)    Comb Pump Rate (bbl/min)    PS Pump Press (psi)    Pump Stg Tot (bbl)

Description	Actual Time (UTC-06:00:00)	DH Density (ppg)	Comb Pump Rate (bbl/min)	PS Pump Press (psi)	Pump Stg Tot (bbl)
12 Pump Spacer 1	18:45:51	8.24	0.00	36.00	0.00
13 Check Weight	18:48:43	8.34	4.00	77.00	9.00
14 Pump Lead Cement	18:51:44	12.03	4.00	160.00	0.00
15 Pump Tail Cement	18:58:59	12.70	8.00	476.00	0.10
16 Check Weight	18:59:29	12.88	8.00	506.00	3.90
17 Shutdown	19:08:27	12.98	0.90	169.00	71.40
18 Drop Top Plug	19:09:46	14.05	0.00	39.00	0.00
19 Pump Displacement	19:10:04	12.32	1.70	46.00	0.10
20 Slow Rate	19:21:19	8.44	2.20	331.00	79.40
21 Bump Plug	19:26:15	8.47	0.00	874.00	89.10
22 Check Floats	19:27:18	8.49	0.00	893.00	89.10

HALLIBURTON | iCem® Service

Created: 2018-06-24 15:18:43, (UTC-06:00), Version: 4.5.139

Edit

Customer : TERRA ENERGY PARTNERS  
 Representative : D.BURR

Job Date : 6/24/2018  
 Sales Order # : 904947238

Well : GM 431-26  
 ELITE 8 : C.SMITH/ K. BENNETT