

Inspection Photos

09/05/2018

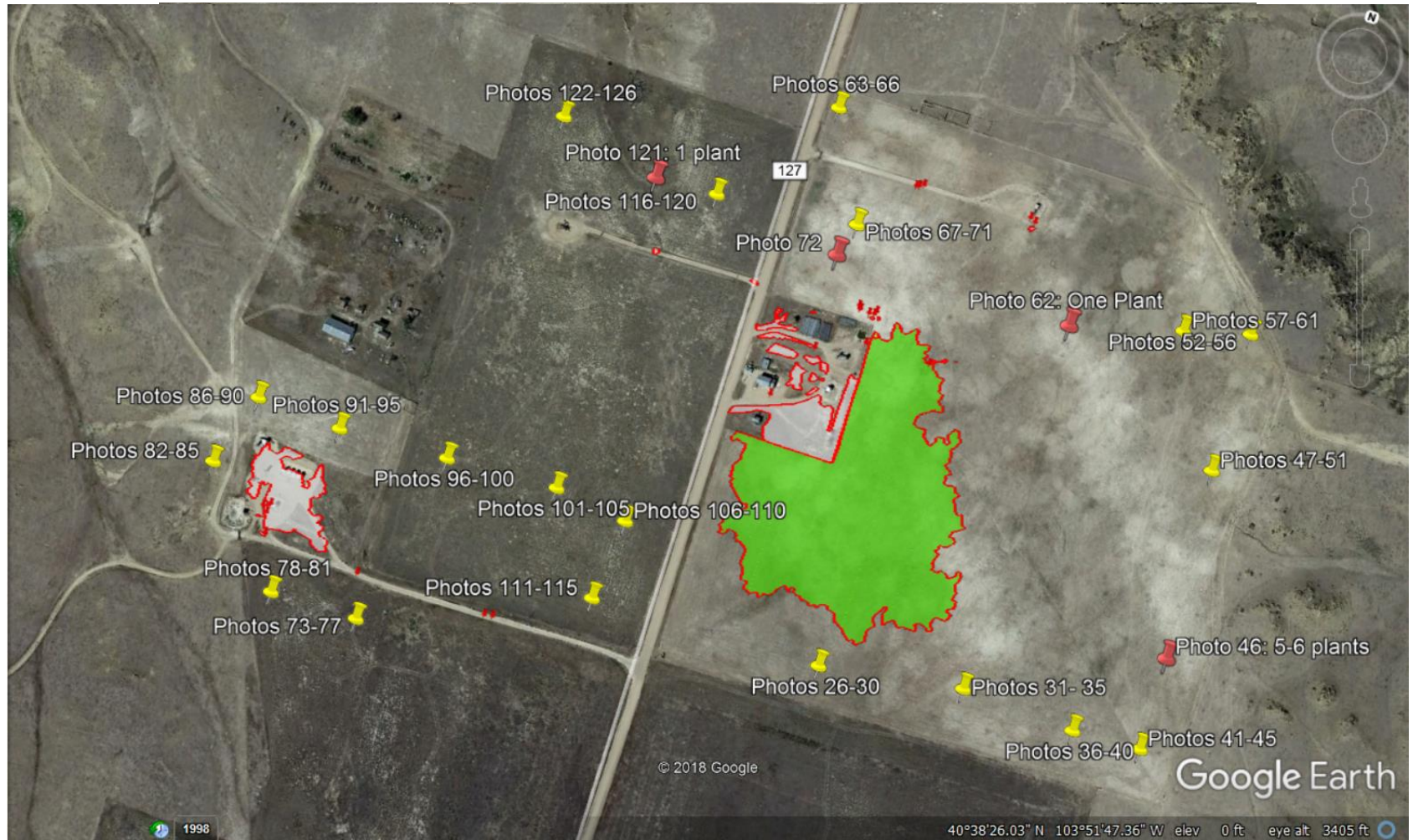
Operator: FOUNDATION ENERGY
MANAGEMENT LLC - 10112

Location ID: 447525

Inspection Doc. Number: 682503851
Weld County, CO

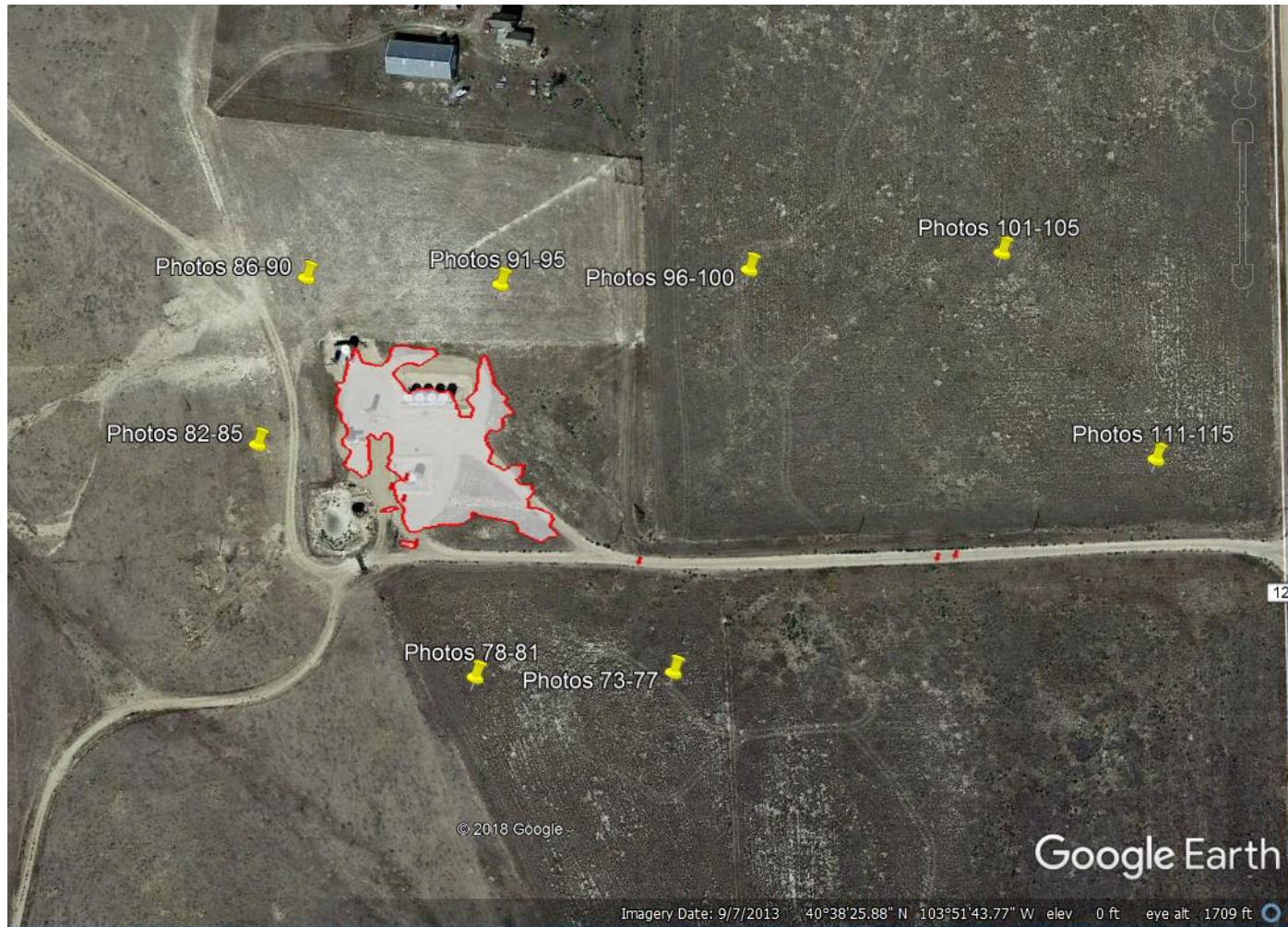
Aaron Trujillo
NE Reclamation Specialist
COGCC

Inspection Photos
Operator: FOUNDATION ENERGY MANAGEMENT LLC - 10112
Location ID: 447525



Aerial imagery of photos that have been taken for documentation purposes. Not all photo documents are included within this report. Red polygons (green/white fill) where Noxious weeds were mapped on and off location using a GPS during the 6/15/2018 inspection; White polygon is diffuse knapweed concentration on location, green is the high density knapweed off the location. Point ("thumb-tacs") represent GPS points and the related photos within the report. Photo shows adjacent lands do not have the population densities of noxious weeds compared to areas within the locations and its immediate surrounding; noxious weed population densities decrease as the distance away from the locations increase.

Inspection Photos
Operator: FOUNDATION ENERGY MANAGEMENT LLC - 10112
Location ID: 447525



2013 aerial imagery. Photo shows overview of photos that will be included in this document.



The photos within this document identify Yellow Sweet clover within the location and reference area, as well as Diffuse Knapweed. For documentation purposes as it may be difficult to distinguish between the two in the photo document, the above picture are to compare and contrast the visible differences between Diffuse Knapweed (Two photos to the left) and Yellow Sweet Clover (Single photo on the right). Photos curtesy of CO Department of Ag, and USDA Plants Database.

Inspection Photos
Operator: FOUNDATION ENERGY MANAGEMENT LLC - 10112
Location ID: 447525



Photo 1: Photo taken from the southwest end of the location, facing north. Photo 1-2 shows overview of location.

Inspection Photos
Operator: FOUNDATION ENERGY MANAGEMENT LLC - 10112
Location ID: 447525



Photo 2: Photo taken from the southwest end of the location, facing north. Photo 1-2 shows overview of location.



Photo 3: Photo taken from the location. Photo shows Diffuse Knapweed still remains on the location. Photo shows weed is currently mature and flowering.



Photo 4: Photo taken from the location. Photo shows Diffuse Knapweed that appears to have been previously sprayed, however, herbicide does not appear to have been sufficient as portions of the plant was able to continue growth and is currently flowering.



Photo 5: See comments under photo 4.

Inspection Photos
Operator: FOUNDATION ENERGY MANAGEMENT LLC - 10112
Location ID: 447525



Photo 73: Photo taken from the adjacent lands, facing north. See photo 127 for additional details. Diffuse Knapweed was not observed in this area. Photo shows adjacent lands do not have the population densities of noxious weeds compared to areas within the locations and its immediate surrounding; noxious weed population densities decrease as the distance away from the locations increase.



Photo 74: Photo taken from the adjacent lands, facing east. See comments under photo 73

Inspection Photos
Operator: FOUNDATION ENERGY MANAGEMENT LLC - 10112
Location ID: 447525



Photo 75: Photo taken from the adjacent lands, facing south. See comments under photo 73



Photo 76: Photo taken from the adjacent lands, facing west. See comments under photo 73



Photo 77: Photo taken from the adjacent lands. Photo shows dominant vegetation observed in this immediate area to be Sideoats Grama

Inspection Photos
Operator: FOUNDATION ENERGY MANAGEMENT LLC - 10112
Location ID: 447525



Photo 78: Photo taken from the adjacent lands, facing north. See photo 127 for additional details. Diffuse Knapweed was not observed in this area. Photo shows adjacent lands do not have the population densities of noxious weeds compared to areas within the locations and its immediate surrounding; noxious weed population densities decrease as the distance away from the locations increase.



Photo 79: Photo taken from the adjacent lands, facing east. See comments under photo 78

Inspection Photos
Operator: FOUNDATION ENERGY MANAGEMENT LLC - 10112
Location ID: 447525



Photo 80: Photo taken from the adjacent lands, facing south. See comments under photo 78



Photo 81: Photo taken from the adjacent lands, facing west. See comments under photo 78

Inspection Photos
Operator: FOUNDATION ENERGY MANAGEMENT LLC - 10112
Location ID: 447525



Photo 82: Photo taken from the adjacent lands, facing north. See photo 127 for additional details. Diffuse Knapweed **was not** observed in this area. Photo shows adjacent lands do not have the population densities of noxious weeds compared to areas within the locations and its immediate surrounding; noxious weed population densities decrease as the distance away from the locations increase.



Photo 83: Photo taken from the adjacent lands, facing east. See comments under photo 82

Inspection Photos
Operator: FOUNDATION ENERGY MANAGEMENT LLC - 10112
Location ID: 447525



Photo 84: Photo taken from the adjacent lands, facing south. See comments under photo 82



Photo 85: Photo taken from the adjacent lands, facing west. See comments under photo 82

Inspection Photos
Operator: FOUNDATION ENERGY MANAGEMENT LLC - 10112
Location ID: 447525



Photo 86: Photo taken from the adjacent lands, facing north. See photo 127 for additional details. Diffuse Knapweed was not observed in this area. Photo shows adjacent lands do not have the population densities of noxious weeds compared to areas within the locations and its immediate surrounding; noxious weed population densities decrease as the distance away from the locations increase.



Photo 87: Photo taken from the adjacent lands, facing east. See comments under photo 86

Inspection Photos
Operator: FOUNDATION ENERGY MANAGEMENT LLC - 10112
Location ID: 447525



Photo 88: Photo taken from the adjacent lands, facing south. See comments under photo 86



Photo 89: Photo taken from the adjacent lands, facing west. See comments under photo 86



Photo 90: Photo taken from the adjacent lands. Photo shows dominant vegetation observed in this immediate area to be Blue Grama and Buffalo Grass

Inspection Photos
Operator: FOUNDATION ENERGY MANAGEMENT LLC - 10112
Location ID: 447525



Photo 91: Photo taken from the adjacent lands, facing north. See photo 127 for additional details. Diffuse Knapweed was not observed in this area. Photo shows adjacent lands do not have the population densities of noxious weeds compared to areas within the locations and its immediate surrounding; noxious weed population densities decrease as the distance away from the locations increase.



Photo 92: Photo taken from the adjacent lands, facing east. See comments under photo 91

Inspection Photos
Operator: FOUNDATION ENERGY MANAGEMENT LLC - 10112
Location ID: 447525



Photo 93: Photo taken from the adjacent lands, facing south. See comments under photo 91



Photo 94: Photo taken from the adjacent lands, facing west. See comments under photo 91



Photo 95: Photo taken from the adjacent lands. Photo shows dominant vegetation observed in this immediate area to be Blue Grama and Buffalo Grass

Inspection Photos
Operator: FOUNDATION ENERGY MANAGEMENT LLC - 10112
Location ID: 447525



Photo 96: Photo taken from the adjacent lands, facing north. See photo 127 for additional details. Diffuse Knapweed was not observed in this area. Photo shows adjacent lands do not have the population densities of noxious weeds compared to areas within the locations and its immediate surrounding; noxious weed population densities decrease as the distance away from the locations increase.



Photo 97: Photo taken from the adjacent lands, facing east. See comments under photo 96

Inspection Photos
Operator: FOUNDATION ENERGY MANAGEMENT LLC - 10112
Location ID: 447525



Photo 98: Photo taken from the adjacent lands, facing south. See comments under photo 96



Photo 99: Photo taken from the adjacent lands, facing west. See comments under photo 96



Photo 100: Photo taken from the adjacent lands. Photo shows dominant vegetation observed in this immediate area to be Sideoats Grama

Inspection Photos
Operator: FOUNDATION ENERGY MANAGEMENT LLC - 10112
Location ID: 447525



Photo 101: Photo taken from the adjacent lands, facing north. See photo 127 for additional details. Diffuse Knapweed was not observed in this area. Photo shows adjacent lands do not have the population densities of noxious weeds compared to areas within the locations and its immediate surrounding; noxious weed population densities decrease as the distance away from the locations increase.



Photo 102: Photo taken from the adjacent lands, facing east. See comments under photo 101

Inspection Photos
Operator: FOUNDATION ENERGY MANAGEMENT LLC - 10112
Location ID: 447525



Photo 103: Photo taken from the adjacent lands, facing south. See comments under photo 101



Photo 104: Photo taken from the adjacent lands, facing west. See comments under photo 101



Photo 105: Photo taken from the adjacent lands. Photo shows dominant vegetation observed in this immediate area to be Sideoats Grama

Inspection Photos
Operator: FOUNDATION ENERGY MANAGEMENT LLC - 10112
Location ID: 447525



Photo 106: Photo taken from the adjacent lands, facing north. See photo 127 for additional details. Diffuse Knapweed **was not** observed in this area. Photo shows adjacent lands do not have the population densities of noxious weeds compared to areas within the locations and its immediate surrounding; noxious weed population densities decrease as the distance away from the locations increase.



Photo 107: Photo taken from the adjacent lands, facing east. See comments under photo 106

Inspection Photos
Operator: FOUNDATION ENERGY MANAGEMENT LLC - 10112
Location ID: 447525



Photo 108: Photo taken from the adjacent lands, facing south. See comments under photo 106



Photo 109: Photo taken from the adjacent lands, facing west. See comments under photo 106



Photo 110: Photo taken from the adjacent lands. Photo shows dominant vegetation observed in this immediate area to be Sideoats Grama

Inspection Photos
Operator: FOUNDATION ENERGY MANAGEMENT LLC - 10112
Location ID: 447525



Photo 111: Photo taken from the adjacent lands, facing north. See photo 127 for additional details. Diffuse Knapweed **was not** observed in this area. Photo shows adjacent lands do not have the population densities of noxious weeds compared to areas within the locations and its immediate surrounding; noxious weed population densities decrease as the distance away from the locations increase.



Photo 112: Photo taken from the adjacent lands, facing east. See comments under photo 111

Inspection Photos
Operator: FOUNDATION ENERGY MANAGEMENT LLC - 10112
Location ID: 447525



Photo 113: Photo taken from the adjacent lands, facing south. See comments under photo 111



Photo 114: Photo taken from the adjacent lands, facing west. See comments under photo 111



Photo 115: Photo taken from the adjacent lands. Photo shows dominant vegetation observed in this immediate area to be Sideoats Grama