

# HALLIBURTON

iCem<sup>®</sup> Service

## **TERRA ENERGY PARTNERS-EBUS**

**For: Terra**

Date: Tuesday, June 19, 2018

**PA 411-26 Surface PJR**

API# 05-045-23713

Sincerely,

**Grand Junction Cement Engineering**

## 1.0 Real-Time Job Summary

## 1.1 Job Event Log

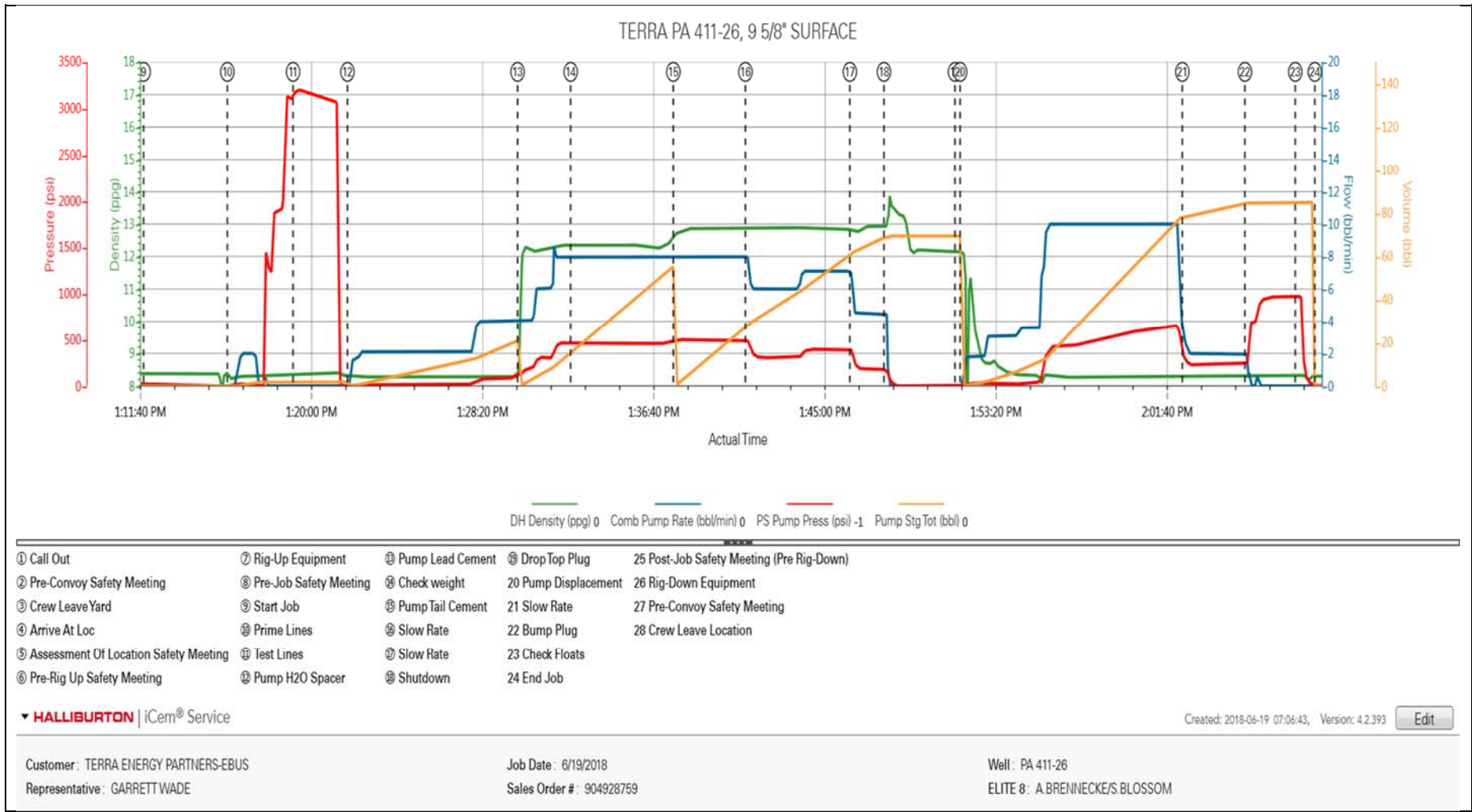
Type	Seq. No.	Graph Label	Date	Time	Source	DH Density (ppg)	Comb Pump Rate (bbl/min)	PS Pump Press (psi)	Pump Stg Tot (bbl)	Comments
Event	1	Call Out	6/19/2018	06:00:00	USER					REQUESTED ON LOCATION @ 10:00
Event	2	Pre-Convoy Safety Meeting	6/19/2018	08:00:00	USER					ALL HES PRESENT
Event	3	Crew Leave Yard	6/19/2018	08:05:00	USER					1 HT 400 PUMP TRUCK E8, 1 660 BULK TRUCKS, 1 450 SERVICE PICKUP
Event	4	Arrive At Loc	6/19/2018	09:00:00	USER					ARRIVED 1 HOUR EARLY. RIG GETTING READY TO START RUNNING CASING
Event	5	Assessment Of Location Safety Meeting	6/19/2018	09:10:00	USER					MET WITH COMP REP, AND WENT OVER NUMBERS AND JOB PROCEDURE. WALKED AROUND LOCATION AND COLLECTED WATER SAMPLE (PH- 7.0, CHLORIDES- 500, TEMP- 65F). COMP REP WAS OFFERED SDS FOR ALL CHEMICLES USED BY HES.
Event	6	Pre-Rig Up Safety Meeting	6/19/2018	09:15:00	USER					ALL HES PRESENT
Event	7	Rig-Up Equipment	6/19/2018	09:20:00	USER					HES RIGGED UP EQUIPMENT WITHOUT ENTERING RED ZONE.
Event	8	Pre-Job Safety Meeting	6/19/2018	12:45:00	USER					ALL HES EMPLOYEES AND RIG CREW PRESENT, RIG CIRCULATED @ 12 BPM PRIOR TO JOB, PRESSURE @265 PSI

Event	9	Start Job	6/19/2018	13:11:56	COM6					TD 1113', TP 1105.45' OF 9 5/8" 36# SURFACE CSG, FC @ 1062.7', OH 13.5", MUD 9.2 PPG
Event	10	Prime Lines	6/19/2018	13:16:00	COM6	8.33	2	25	2	8.33 PPG FRESH WATER
Event	11	Test Lines	6/19/2018	13:19:12	COM6				3190	ALL LINES HELD PRESSURE AT 3190 PSI
Event	12	Pump H2O Spacer	6/19/2018	13:21:51	COM6	8.33	4	87	20	FRESH WATER
Event	13	Pump Lead Cement	6/19/2018	13:30:08	COM6	12.3	8	450	53	125 SKS VARICEM CMT 12.3 PPG, 2.38 FT3/SK, 13.77 GAL/SK
Event	14	Check weight	6/19/2018	13:32:43	COM6					WEIGHT VERIFIED VIA PRESSUREIZED MUD SCALES
Event	15	Pump Tail Cement	6/19/2018	13:37:43	COM6	12.8	8	500	65.8	175 SKS VARICEM CMT 12.8 PPG, 2.11 FT3/SK, 11.78 GAL/SK
Event	16	Slow Rate	6/19/2018	13:41:14	USER					SLOWED RATE FOR CELLAR PUMP TO CATCH UP
Event	17	Slow Rate	6/19/2018	13:46:19	USER					SLOWED TO END CEMENT
Event	18	Shutdown	6/19/2018	13:47:59	USER					END OF CEMENT, WASH UP ON TOP OF PLUG
Event	19	Drop Top Plug	6/19/2018	13:51:26	COM6					VERIFIED BY FLAG INDICATOR
Event	20	Pump Displacement	6/19/2018	13:51:41	COM6	8.33	10	650	82.3	FRESH WATER
Event	21	Slow Rate	6/19/2018	14:02:30	USER	8.33	2	230	72.3	SLOW RATE TO 2 BPM TO BUMP PLUG
Event	22	Bump Plug	6/19/2018	14:05:33	COM6	8.33	2	250	82.3	LAND PLUG AT 250 PSI, BROUGHT UP TO 950 PSI
Event	23	Check Floats	6/19/2018	14:08:00	USER					FLOATS HELD, .5 BBL BACK TO TRUCK

Event	24	End Job	6/19/2018	14:08:58	COM6	RETURNS THROUGHOUT JOB, 25 BBLS CMT TO SURFACE, 40# OF SUGAR USED.
Event	25	Post-Job Safety Meeting (Pre Rig-Down)	6/19/2018	14:10:00	USER	ALL HES PRESENT
Event	26	Rig-Down Equipment	6/19/2018	14:15:00	USER	ALL HES PRESENT
Event	27	Pre-Convoy Safety Meeting	6/19/2018	15:00:00	USER	ALL HES PRESENT
Event	28	Crew Leave Location	6/19/2018	15:03:00	USER	THANK YOU FOR CHOOSING HALLIBURTON CEMENT, SHAWN BLOSSOM AND CREW

2.0 Attachments

2.1 CHART WITH EVENTS.png



2.2 CHART WITH OUT EVENTS.png

