

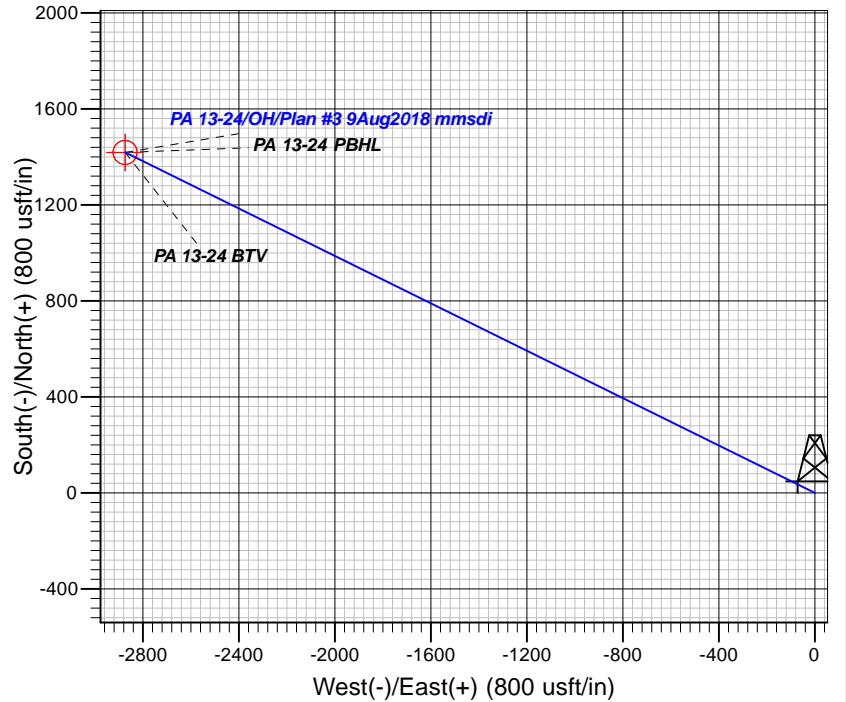
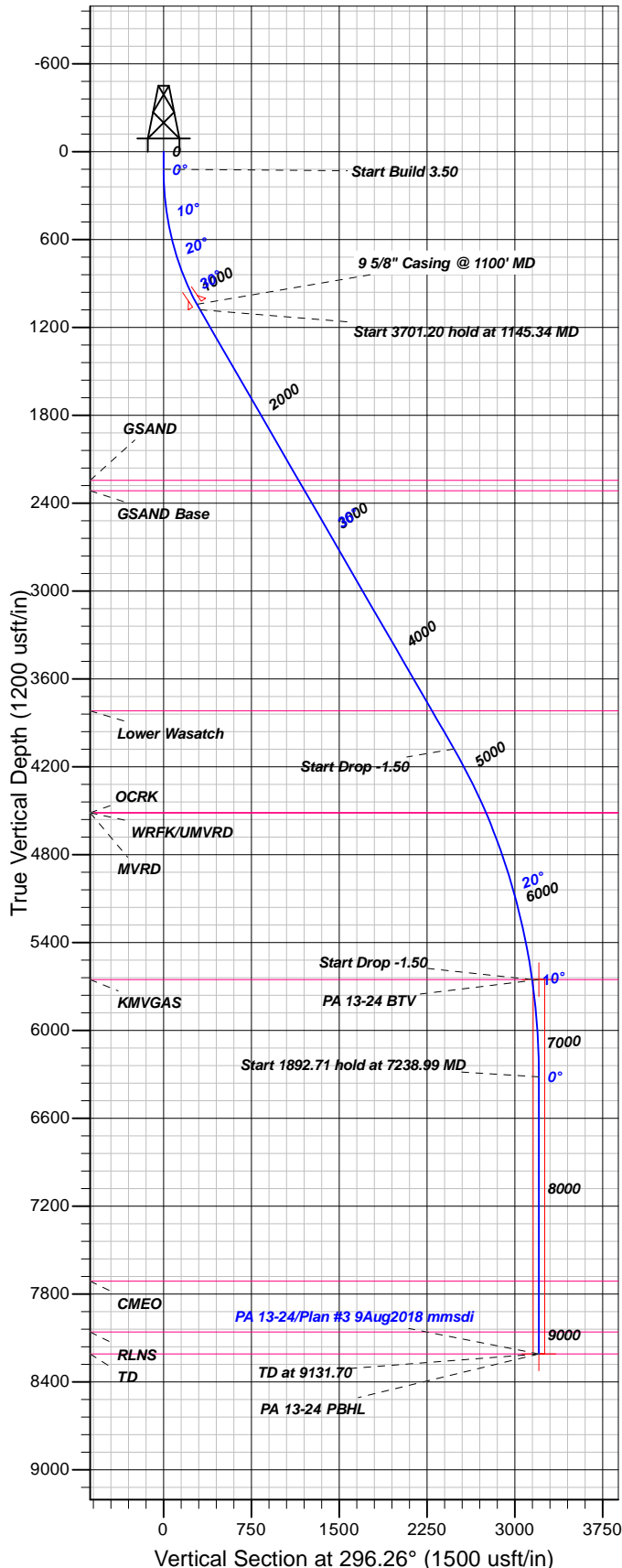


Azimuths to True North  
Magnetic North: 9.37°

Magnetic Field  
Strength: 51590.3snT  
Dip Angle: 65.77°  
Date: 8/9/2018  
Model: HDGM

## Well Details: PA 13-24

+N/-S	+E/-W	Northing	Easting	Latitude	Longitude	Slot
0.00	0.00	1618385.27	2310460.59	39.5057803	-107.9440726	PA 13-24 (B5)



## FORMATION TOP DETAILS

TVDP	MD	Formation
2245.00	2583.79	GSAND
2315.00	2670.19	GSAND Base
3819.00	4526.57	Lower Wasatch
4515.00	5362.08	MVRD
4515.00	5362.08	OCRK
4515.00	5362.08	WRFK/UMVRD
5654.00	6572.32	KMVGAS
7713.00	8634.70	CMEO
8060.00	8981.70	RLNS
8210.00	9131.70	TD

Plan: Plan #3 9Aug2018 mmsdi

13:45, August 10 2018  
Created By: Mel Mireles

PROJECT DETAILS: Garfield County, CO NAD83

Geodetic System: US State Plane 1983  
Datum: North American Datum 1983  
Ellipsoid: GRS 1980  
Zone: Colorado Central Zone

System Datum: Mean Sea Level

## CASING DETAILS

TVD	MD	Name	Size
1042.50	1100.00	5/8" Casing @ 1100' MD	9.62

## SECTION DETAILS

Sec	MD	Inc	Azi	TVD	+N/-S	+E/-W	Dleg	TFace	VFace	Target
1	0.00	0.00	0.00	0.00	0.00	0.00	0.00	0.00	0.00	
2	120.00	0.00	0.00	120.00	0.00	0.00	0.00	0.00	0.00	
3	1145.34	35.89	296.26	1079.60	137.51	-278.66	3.50	296.26	310.74	
4	4846.53	35.89	296.26	4078.23	1097.57	-2224.27	0.00	0.00	2480.33	
5	6572.32	10.00	296.26	5654.00	1392.74	-2822.45	1.50	180.00	3147.37	
6	7238.99	0.00	0.00	6317.29	1418.42	-2874.49	1.50	180.00	3205.40	
7	9131.70	0.00	0.00	8210.00	1418.42	-2874.49	0.00	0.00	3205.40	PA 13-24 PBHL

## DESIGN TARGET DETAILS

Name	TVD	+N/-S	+E/-W	Northing	Easting	Latitude	Longitude	Shape
PA 13-24 BTV	5654.00	1418.42	-2874.49	1618385.27	2310460.59	39.5057803	-107.9542605	Circle (Radius: 50.00)
- plan misses target center by 57.16usft at 6582.19usft MD (5663.72 TVD, 1393.49 N, -2823.98 E)								
PA 13-24 PBHL	8210.00	1418.42	-2874.49	1618385.27	2310460.59	39.5057803	-107.9542605	Point
- plan hits target center								



## **TEP Rocky Mountain LLC**

**Garfield County, CO NAD83**

**PA 34-24 Pad**

**PA 13-24 - Slot PA 13-24 (B5)**

**OH**

**Plan: Plan #3 9Aug2018 mmsdi**

## **Standard Planning Report**

**10 August, 2018**



<b>Database:</b>	Grand Junction District	<b>Local Co-ordinate Reference:</b>	Well PA 13-24 - Slot PA 13-24 (B5)
<b>Company:</b>	TEP Rocky Mountain LLC	<b>TVD Reference:</b>	GL 5371' & RKB 24' @ 5395.00usft
<b>Project:</b>	Garfield County, CO NAD83	<b>MD Reference:</b>	GL 5371' & RKB 24' @ 5395.00usft
<b>Site:</b>	PA 34-24 Pad	<b>North Reference:</b>	True
<b>Well:</b>	PA 13-24	<b>Survey Calculation Method:</b>	Minimum Curvature
<b>Wellbore:</b>	OH		
<b>Design:</b>	Plan #3 9Aug2018 mmsdi		

<b>Project</b>	Garfield County, CO NAD83		
<b>Map System:</b>	US State Plane 1983	<b>System Datum:</b>	Mean Sea Level
<b>Geo Datum:</b>	North American Datum 1983		
<b>Map Zone:</b>	Colorado Central Zone		

<b>Site</b>	PA 34-24 Pad			
<b>Site Position:</b>		<b>Northing:</b>	1,618,371.20 usft	<b>Latitude:</b> 39.5057421
<b>From:</b> Map		<b>Easting:</b>	2,310,465.70 usft	<b>Longitude:</b> -107.9440532
<b>Position Uncertainty:</b>	0.00 usft	<b>Slot Radius:</b>	13.20 in	<b>Grid Convergence:</b> -1.54 °

<b>Well</b>	PA 13-24 - Slot PA 13-24 (B5)			
<b>Well Position</b>	<b>+N/-S</b>	13.93 usft	<b>Northing:</b>	1,618,385.27 usft
	<b>+E/-W</b>	-5.49 usft	<b>Easting:</b>	2,310,460.59 usft
<b>Position Uncertainty</b>	0.00 usft		<b>Wellhead Elevation:</b>	0.00 usft
			<b>Ground Level:</b>	5,371.00 usft

<b>Wellbore</b>	OH				
<b>Magnetics</b>	<b>Model Name</b>	<b>Sample Date</b>	<b>Declination (°)</b>	<b>Dip Angle (°)</b>	<b>Field Strength (nT)</b>
	HDGM	12/28/2017	9.42	65.78	51,662

<b>Design</b>	Plan #3 9Aug2018 mmsdi			
<b>Audit Notes:</b>				
<b>Version:</b>	<b>Phase:</b>	PLAN	<b>Tie On Depth:</b>	0.00
<b>Vertical Section:</b>	<b>Depth From (TVD) (usft)</b>	<b>+N/-S (usft)</b>	<b>+E/-W (usft)</b>	<b>Direction (°)</b>
	0.00	0.00	0.00	296.26

<b>Plan Sections</b>										
Measured Depth (usft)	Inclination (°)	Azimuth (°)	Vertical Depth (usft)	+N/-S (usft)	+E/-W (usft)	Dogleg Rate (°/100usft)	Build Rate (°/100usft)	Turn Rate (°/100usft)	TFO (°)	Target
0.00	0.00	0.00	0.00	0.00	0.00	0.00	0.00	0.00	0.00	
120.00	0.00	0.00	120.00	0.00	0.00	0.00	0.00	0.00	0.00	
1,145.34	35.89	296.26	1,079.60	137.51	-278.66	3.50	3.50	0.00	296.26	
4,846.54	35.89	296.26	4,078.23	1,097.57	-2,224.27	0.00	0.00	0.00	0.00	
6,572.32	10.00	296.26	5,654.00	1,392.74	-2,822.45	1.50	-1.50	0.00	180.00	
7,238.99	0.00	0.00	6,317.29	1,418.42	-2,874.49	1.50	-1.50	0.00	180.00	
9,131.70	0.00	0.00	8,210.00	1,418.42	-2,874.49	0.00	0.00	0.00	0.00	PA 13-24 PBHL

<b>Database:</b>	Grand Junction District	<b>Local Co-ordinate Reference:</b>	Well PA 13-24 - Slot PA 13-24 (B5)
<b>Company:</b>	TEP Rocky Mountain LLC	<b>TVD Reference:</b>	GL 5371' & RKB 24' @ 5395.00usft
<b>Project:</b>	Garfield County, CO NAD83	<b>MD Reference:</b>	GL 5371' & RKB 24' @ 5395.00usft
<b>Site:</b>	PA 34-24 Pad	<b>North Reference:</b>	True
<b>Well:</b>	PA 13-24	<b>Survey Calculation Method:</b>	Minimum Curvature
<b>Wellbore:</b>	OH		
<b>Design:</b>	Plan #3 9Aug2018 mmsdi		

Planned Survey									
Measured Depth (usft)	Inclination (°)	Azimuth (°)	Vertical Depth (usft)	+N/-S (usft)	+E/-W (usft)	Vertical Section (usft)	Dogleg Rate (°/100usft)	Build Rate (°/100usft)	Turn Rate (°/100usft)
0.00	0.00	0.00	0.00	0.00	0.00	0.00	0.00	0.00	0.00
100.00	0.00	0.00	100.00	0.00	0.00	0.00	0.00	0.00	0.00
120.00	0.00	0.00	120.00	0.00	0.00	0.00	0.00	0.00	0.00
<b>Start Build 3.50</b>									
200.00	2.80	296.26	199.97	0.86	-1.75	1.95	3.50	3.50	0.00
300.00	6.30	296.26	299.64	4.37	-8.87	9.89	3.50	3.50	0.00
400.00	9.80	296.26	398.64	10.57	-21.42	23.89	3.50	3.50	0.00
500.00	13.30	296.26	496.60	19.43	-39.37	43.91	3.50	3.50	0.00
600.00	16.80	296.26	593.15	30.92	-62.66	69.87	3.50	3.50	0.00
700.00	20.30	296.26	687.94	44.99	-91.18	101.68	3.50	3.50	0.00
800.00	23.80	296.26	780.61	61.60	-124.84	139.21	3.50	3.50	0.00
900.00	27.30	296.26	870.82	80.69	-163.51	182.34	3.50	3.50	0.00
1,000.00	30.80	296.26	958.23	102.17	-207.05	230.89	3.50	3.50	0.00
1,100.00	34.30	296.26	1,042.50	125.97	-255.29	284.68	3.50	3.50	0.00
<b>9 5/8" Casing @ 1100' MD</b>									
1,145.34	35.89	296.26	1,079.60	137.51	-278.66	310.74	3.50	3.50	0.00
<b>Start 3701.20 hold at 1145.34 MD</b>									
1,200.00	35.89	296.26	1,123.89	151.69	-307.40	342.79	0.00	0.00	0.00
1,300.00	35.89	296.26	1,204.90	177.63	-359.97	401.41	0.00	0.00	0.00
1,400.00	35.89	296.26	1,285.92	203.56	-412.53	460.02	0.00	0.00	0.00
1,500.00	35.89	296.26	1,366.94	229.50	-465.10	518.64	0.00	0.00	0.00
1,600.00	35.89	296.26	1,447.96	255.44	-517.67	577.26	0.00	0.00	0.00
1,700.00	35.89	296.26	1,528.97	281.38	-570.23	635.88	0.00	0.00	0.00
1,800.00	35.89	296.26	1,609.99	307.32	-622.80	694.50	0.00	0.00	0.00
1,900.00	35.89	296.26	1,691.01	333.26	-675.37	753.12	0.00	0.00	0.00
2,000.00	35.89	296.26	1,772.03	359.20	-727.94	811.74	0.00	0.00	0.00
2,100.00	35.89	296.26	1,853.05	385.14	-780.50	870.35	0.00	0.00	0.00
2,200.00	35.89	296.26	1,934.06	411.08	-833.07	928.97	0.00	0.00	0.00
2,300.00	35.89	296.26	2,015.08	437.02	-885.64	987.59	0.00	0.00	0.00
2,400.00	35.89	296.26	2,096.10	462.96	-938.20	1,046.21	0.00	0.00	0.00
2,500.00	35.89	296.26	2,177.12	488.90	-990.77	1,104.83	0.00	0.00	0.00
2,583.79	35.89	296.26	2,245.00	510.63	-1,034.82	1,153.94	0.00	0.00	0.00
<b>GSAND</b>									
2,600.00	35.89	296.26	2,258.13	514.84	-1,043.34	1,163.45	0.00	0.00	0.00
2,670.19	35.89	296.26	2,315.00	533.04	-1,080.23	1,204.59	0.00	0.00	0.00
<b>GSAND Base</b>									
2,700.00	35.89	296.26	2,339.15	540.77	-1,095.90	1,222.07	0.00	0.00	0.00
2,800.00	35.89	296.26	2,420.17	566.71	-1,148.47	1,280.68	0.00	0.00	0.00
2,900.00	35.89	296.26	2,501.19	592.65	-1,201.04	1,339.30	0.00	0.00	0.00
3,000.00	35.89	296.26	2,582.20	618.59	-1,253.61	1,397.92	0.00	0.00	0.00
3,100.00	35.89	296.26	2,663.22	644.53	-1,306.17	1,456.54	0.00	0.00	0.00
3,200.00	35.89	296.26	2,744.24	670.47	-1,358.74	1,515.16	0.00	0.00	0.00
3,300.00	35.89	296.26	2,825.26	696.41	-1,411.31	1,573.78	0.00	0.00	0.00
3,400.00	35.89	296.26	2,906.28	722.35	-1,463.87	1,632.39	0.00	0.00	0.00
3,500.00	35.89	296.26	2,987.29	748.29	-1,516.44	1,691.01	0.00	0.00	0.00
3,600.00	35.89	296.26	3,068.31	774.23	-1,569.01	1,749.63	0.00	0.00	0.00
3,700.00	35.89	296.26	3,149.33	800.17	-1,621.57	1,808.25	0.00	0.00	0.00
3,800.00	35.89	296.26	3,230.35	826.11	-1,674.14	1,866.87	0.00	0.00	0.00
3,900.00	35.89	296.26	3,311.36	852.05	-1,726.71	1,925.49	0.00	0.00	0.00
4,000.00	35.89	296.26	3,392.38	877.98	-1,779.27	1,984.11	0.00	0.00	0.00
4,100.00	35.89	296.26	3,473.40	903.92	-1,831.84	2,042.72	0.00	0.00	0.00
4,200.00	35.89	296.26	3,554.42	929.86	-1,884.41	2,101.34	0.00	0.00	0.00
4,300.00	35.89	296.26	3,635.43	955.80	-1,936.98	2,159.96	0.00	0.00	0.00
4,400.00	35.89	296.26	3,716.45	981.74	-1,989.54	2,218.58	0.00	0.00	0.00

<b>Database:</b>	Grand Junction District	<b>Local Co-ordinate Reference:</b>	Well PA 13-24 - Slot PA 13-24 (B5)
<b>Company:</b>	TEP Rocky Mountain LLC	<b>TVD Reference:</b>	GL 5371' & RKB 24' @ 5395.00usft
<b>Project:</b>	Garfield County, CO NAD83	<b>MD Reference:</b>	GL 5371' & RKB 24' @ 5395.00usft
<b>Site:</b>	PA 34-24 Pad	<b>North Reference:</b>	True
<b>Well:</b>	PA 13-24	<b>Survey Calculation Method:</b>	Minimum Curvature
<b>Wellbore:</b>	OH		
<b>Design:</b>	Plan #3 9Aug2018 mmsdi		

Planned Survey									
Measured Depth (usft)	Inclination (°)	Azimuth (°)	Vertical Depth (usft)	+N/-S (usft)	+E/-W (usft)	Vertical Section (usft)	Dogleg Rate (°/100usft)	Build Rate (°/100usft)	Turn Rate (°/100usft)
4,500.00	35.89	296.26	3,797.47	1,007.68	-2,042.11	2,277.20	0.00	0.00	0.00
4,526.57	35.89	296.26	3,819.00	1,014.57	-2,056.08	2,292.78	0.00	0.00	0.00
<b>Lower Wasatch</b>									
4,600.00	35.89	296.26	3,878.49	1,033.62	-2,094.68	2,335.82	0.00	0.00	0.00
4,700.00	35.89	296.26	3,959.51	1,059.56	-2,147.24	2,394.44	0.00	0.00	0.00
4,800.00	35.89	296.26	4,040.52	1,085.50	-2,199.81	2,453.05	0.00	0.00	0.00
4,846.54	35.89	296.26	4,078.23	1,097.57	-2,224.27	2,480.33	0.00	0.00	0.00
<b>Start Drop -1.50</b>									
4,900.00	35.08	296.26	4,121.76	1,111.30	-2,252.10	2,511.37	1.50	-1.50	0.00
5,000.00	33.58	296.26	4,204.33	1,136.26	-2,302.68	2,567.77	1.50	-1.50	0.00
5,100.00	32.08	296.26	4,288.35	1,160.25	-2,351.31	2,621.99	1.50	-1.50	0.00
5,200.00	30.58	296.26	4,373.77	1,183.27	-2,397.94	2,673.99	1.50	-1.50	0.00
5,300.00	29.08	296.26	4,460.51	1,205.28	-2,442.55	2,723.74	1.50	-1.50	0.00
5,362.08	28.15	296.26	4,515.00	1,218.44	-2,469.22	2,753.47	1.50	-1.50	0.00
<b>OCRK - MVRD - WRFK/UMVRD</b>									
5,400.00	27.58	296.26	4,548.53	1,226.28	-2,485.11	2,771.20	1.50	-1.50	0.00
5,500.00	26.08	296.26	4,637.75	1,246.26	-2,525.59	2,816.34	1.50	-1.50	0.00
5,600.00	24.58	296.26	4,728.13	1,265.19	-2,563.97	2,859.13	1.50	-1.50	0.00
5,700.00	23.08	296.26	4,819.60	1,283.07	-2,600.20	2,899.54	1.50	-1.50	0.00
5,800.00	21.58	296.26	4,912.10	1,299.89	-2,634.28	2,937.54	1.50	-1.50	0.00
5,900.00	20.08	296.26	5,005.56	1,315.63	-2,666.18	2,973.11	1.50	-1.50	0.00
6,000.00	18.58	296.26	5,099.91	1,330.28	-2,695.87	3,006.22	1.50	-1.50	0.00
6,100.00	17.08	296.26	5,195.11	1,343.83	-2,723.33	3,036.84	1.50	-1.50	0.00
6,200.00	15.58	296.26	5,291.07	1,356.27	-2,748.55	3,064.97	1.50	-1.50	0.00
6,300.00	14.08	296.26	5,387.73	1,367.60	-2,771.51	3,090.57	1.50	-1.50	0.00
6,400.00	12.58	296.26	5,485.03	1,377.81	-2,792.19	3,113.63	1.50	-1.50	0.00
6,500.00	11.08	296.26	5,582.90	1,386.88	-2,810.58	3,134.14	1.50	-1.50	0.00
6,572.32	10.00	296.26	5,654.00	1,392.74	-2,822.45	3,147.37	1.50	-1.50	0.00
<b>Start Drop -1.50 - KMGAS</b>									
6,582.19	9.85	296.26	5,663.72	1,393.49	-2,823.98	3,149.07	1.50	-1.50	0.00
<b>PA 13-24 BTV</b>									
6,600.00	9.58	296.26	5,681.28	1,394.82	-2,826.67	3,152.08	1.50	-1.50	0.00
6,700.00	8.08	296.26	5,780.09	1,401.62	-2,840.44	3,167.44	1.50	-1.50	0.00
6,800.00	6.58	296.26	5,879.27	1,407.27	-2,851.89	3,180.20	1.50	-1.50	0.00
6,900.00	5.08	296.26	5,978.75	1,411.77	-2,861.01	3,190.37	1.50	-1.50	0.00
7,000.00	3.58	296.26	6,078.46	1,415.11	-2,867.79	3,197.93	1.50	-1.50	0.00
7,100.00	2.08	296.26	6,178.33	1,417.30	-2,872.22	3,202.87	1.50	-1.50	0.00
7,200.00	0.58	296.26	6,278.30	1,418.33	-2,874.31	3,205.20	1.50	-1.50	0.00
7,238.99	0.00	0.00	6,317.29	1,418.42	-2,874.49	3,205.40	1.50	-1.50	0.00
<b>Start 1892.71 hold at 7238.99 MD</b>									
7,300.00	0.00	0.00	6,378.30	1,418.42	-2,874.49	3,205.40	0.00	0.00	0.00
7,400.00	0.00	0.00	6,478.30	1,418.42	-2,874.49	3,205.40	0.00	0.00	0.00
7,500.00	0.00	0.00	6,578.30	1,418.42	-2,874.49	3,205.40	0.00	0.00	0.00
7,600.00	0.00	0.00	6,678.30	1,418.42	-2,874.49	3,205.40	0.00	0.00	0.00
7,700.00	0.00	0.00	6,778.30	1,418.42	-2,874.49	3,205.40	0.00	0.00	0.00
7,800.00	0.00	0.00	6,878.30	1,418.42	-2,874.49	3,205.40	0.00	0.00	0.00
7,900.00	0.00	0.00	6,978.30	1,418.42	-2,874.49	3,205.40	0.00	0.00	0.00
8,000.00	0.00	0.00	7,078.30	1,418.42	-2,874.49	3,205.40	0.00	0.00	0.00
8,100.00	0.00	0.00	7,178.30	1,418.42	-2,874.49	3,205.40	0.00	0.00	0.00
8,200.00	0.00	0.00	7,278.30	1,418.42	-2,874.49	3,205.40	0.00	0.00	0.00
8,300.00	0.00	0.00	7,378.30	1,418.42	-2,874.49	3,205.40	0.00	0.00	0.00
8,400.00	0.00	0.00	7,478.30	1,418.42	-2,874.49	3,205.40	0.00	0.00	0.00
8,500.00	0.00	0.00	7,578.30	1,418.42	-2,874.49	3,205.40	0.00	0.00	0.00

<b>Database:</b>	Grand Junction District	<b>Local Co-ordinate Reference:</b>	Well PA 13-24 - Slot PA 13-24 (B5)
<b>Company:</b>	TEP Rocky Mountain LLC	<b>TVD Reference:</b>	GL 5371' & RKB 24' @ 5395.00usft
<b>Project:</b>	Garfield County, CO NAD83	<b>MD Reference:</b>	GL 5371' & RKB 24' @ 5395.00usft
<b>Site:</b>	PA 34-24 Pad	<b>North Reference:</b>	True
<b>Well:</b>	PA 13-24	<b>Survey Calculation Method:</b>	Minimum Curvature
<b>Wellbore:</b>	OH		
<b>Design:</b>	Plan #3 9Aug2018 mmsdi		

Planned Survey									
Measured Depth (usft)	Inclination (°)	Azimuth (°)	Vertical Depth (usft)	+N/-S (usft)	+E/-W (usft)	Vertical Section (usft)	Dogleg Rate (°/100usft)	Build Rate (°/100usft)	Turn Rate (°/100usft)
8,600.00	0.00	0.00	7,678.30	1,418.42	-2,874.49	3,205.40	0.00	0.00	0.00
8,634.70	0.00	0.00	7,713.00	1,418.42	-2,874.49	3,205.40	0.00	0.00	0.00
<b>CMEO</b>									
8,700.00	0.00	0.00	7,778.30	1,418.42	-2,874.49	3,205.40	0.00	0.00	0.00
8,800.00	0.00	0.00	7,878.30	1,418.42	-2,874.49	3,205.40	0.00	0.00	0.00
8,900.00	0.00	0.00	7,978.30	1,418.42	-2,874.49	3,205.40	0.00	0.00	0.00
8,981.70	0.00	0.00	8,060.00	1,418.42	-2,874.49	3,205.40	0.00	0.00	0.00
<b>RLNS</b>									
9,000.00	0.00	0.00	8,078.30	1,418.42	-2,874.49	3,205.40	0.00	0.00	0.00
9,100.00	0.00	0.00	8,178.30	1,418.42	-2,874.49	3,205.40	0.00	0.00	0.00
9,131.70	0.00	0.00	8,210.00	1,418.42	-2,874.49	3,205.40	0.00	0.00	0.00
<b>TD at 9131.70 - TD - PA 13-24 PBHL</b>									

Design Targets									
Target Name	Dip Angle (°)	Dip Dir. (°)	TVD (usft)	+N/-S (usft)	+E/-W (usft)	Northing (usft)	Easting (usft)	Latitude	Longitude
- hit/miss target									
- Shape									
PA 13-24 BTV	0.00	0.00	5,654.00	1,418.42	-2,874.49	1,619,880.50	2,307,625.30	39.5096741	-107.9542606
- plan misses target center by 57.16usft at 6582.19usft MD (5663.72 TVD, 1393.49 N, -2823.98 E)									
- Circle (radius 50.00)									
PA 13-24 PBHL	0.00	0.00	8,210.00	1,418.42	-2,874.49	1,619,880.50	2,307,625.30	39.5096741	-107.9542606
- plan hits target center									
- Point									

Casing Points					
Measured Depth (usft)	Vertical Depth (usft)	Name	Casing Diameter (in)	Hole Diameter (in)	
1,100.00	1,042.50	9 5/8" Casing @ 1100' MD	9.62	13.50	

Formations					
Measured Depth (usft)	Vertical Depth (usft)	Name	Lithology	Dip (°)	Dip Direction (°)
2,583.79	2,245.00	GSAND		0.00	0.00
2,670.19	2,315.00	GSAND Base		0.00	0.00
4,526.57	3,819.00	Lower Wasatch		0.00	0.00
5,362.08	4,515.00	OCRK		0.00	0.00
5,362.08	4,515.00	MVRD		0.00	0.00
5,362.08	4,515.00	WRFK/UMVRD		0.00	0.00
6,572.32	5,654.00	KMVGAS		0.00	0.00
8,634.70	7,713.00	CMEO		0.00	0.00
8,981.70	8,060.00	RLNS		0.00	0.00
9,131.70	8,210.00	TD		0.00	0.00

<b>Database:</b>	Grand Junction District	<b>Local Co-ordinate Reference:</b>	Well PA 13-24 - Slot PA 13-24 (B5)
<b>Company:</b>	TEP Rocky Mountain LLC	<b>TVD Reference:</b>	GL 5371' & RKB 24' @ 5395.00usft
<b>Project:</b>	Garfield County, CO NAD83	<b>MD Reference:</b>	GL 5371' & RKB 24' @ 5395.00usft
<b>Site:</b>	PA 34-24 Pad	<b>North Reference:</b>	True
<b>Well:</b>	PA 13-24	<b>Survey Calculation Method:</b>	Minimum Curvature
<b>Wellbore:</b>	OH		
<b>Design:</b>	Plan #3 9Aug2018 mmsdi		

Plan Annotations				
Measured Depth (usft)	Vertical Depth (usft)	Local Coordinates		Comment
		+N/-S (usft)	+E/-W (usft)	
120.00	120.00	0.00	0.00	Start Build 3.50
1,145.34	1,079.60	137.51	-278.66	Start 3701.20 hold at 1145.34 MD
4,846.54	4,078.23	1,097.57	-2,224.27	Start Drop -1.50
6,572.32	5,654.00	1,392.74	-2,822.45	Start Drop -1.50
7,238.99	6,317.29	1,418.42	-2,874.49	Start 1892.71 hold at 7238.99 MD
9,131.70	8,210.00	1,418.42	-2,874.49	TD at 9131.70