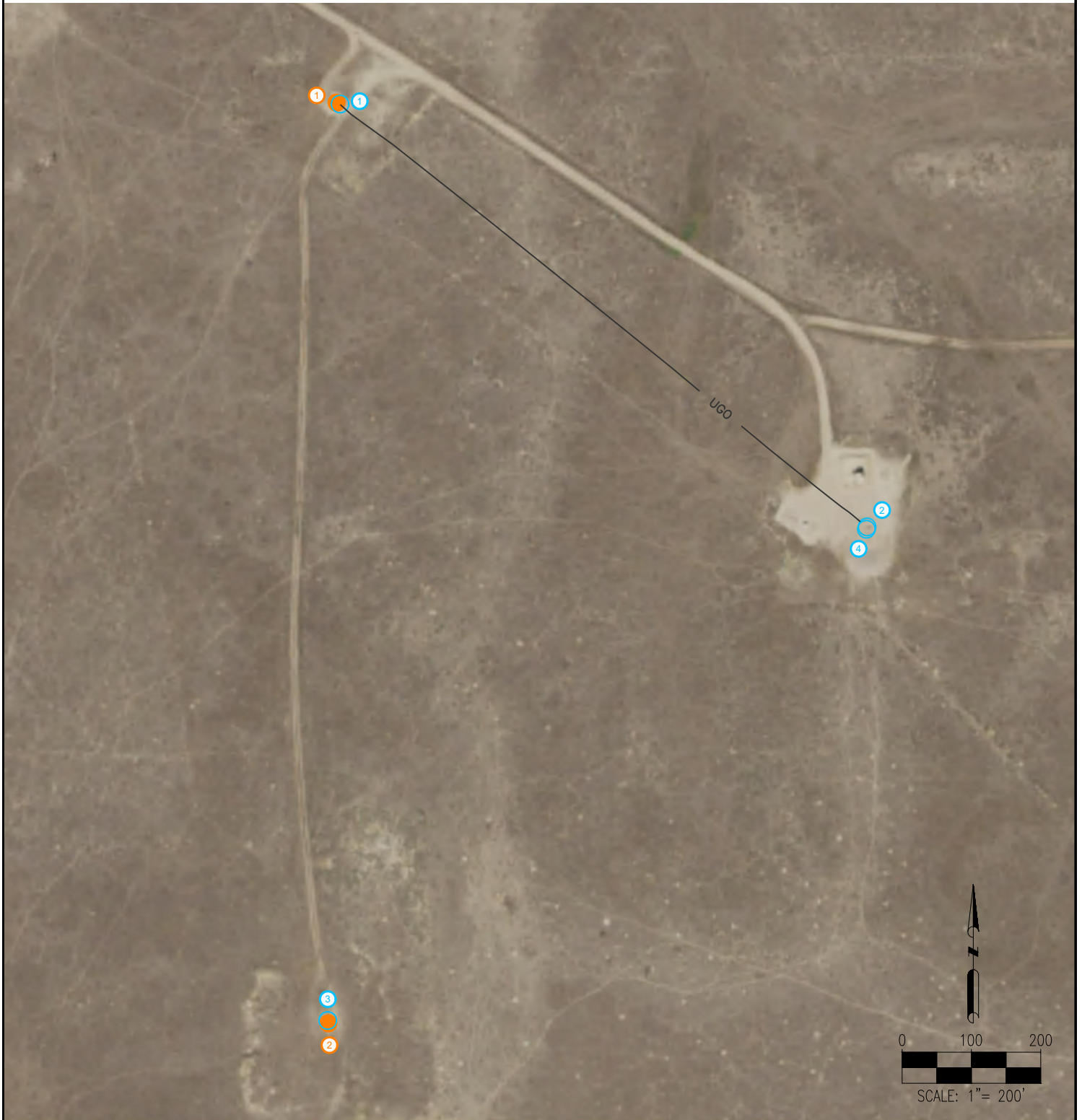


HAZLET A #2, A #3 AS-BUILT EXHIBIT



LEGEND:

- = WELL HEAD
- = RISER
- ugo — = FLOWLINE

- ① HAZLET A #3
- ② HAZLET A #2

- ① HAZLET A #3 RISER AT WELLHEAD
- ② HAZLET A #3 RISER AT SEPARATOR
- ③ HAZLET A #2 RISER AT WELLHEAD
- ④ HAZLET A #2 RISER AT SEPARATOR

NOTE: LOCATES UNAVAILABLE FOR HAZLET A #2 FLOWLINE.




7535 Hilltop Circle
Denver, CO 80221
(303) 928-7128
www.ascentgeomatics.com

FIELD DATE:	08-09-18
DRAWING DATE:	08-22-18
BY:	SJH
CHECKED:	IJM

SURFACE LOCATION:
SEC. 32, T1S, R64W, 6TH P.M.
ADAMS COUNTY, COLORADO

PREPARED FOR:



BAYSWATER
EXPLORATION AND PRODUCTION, LLC