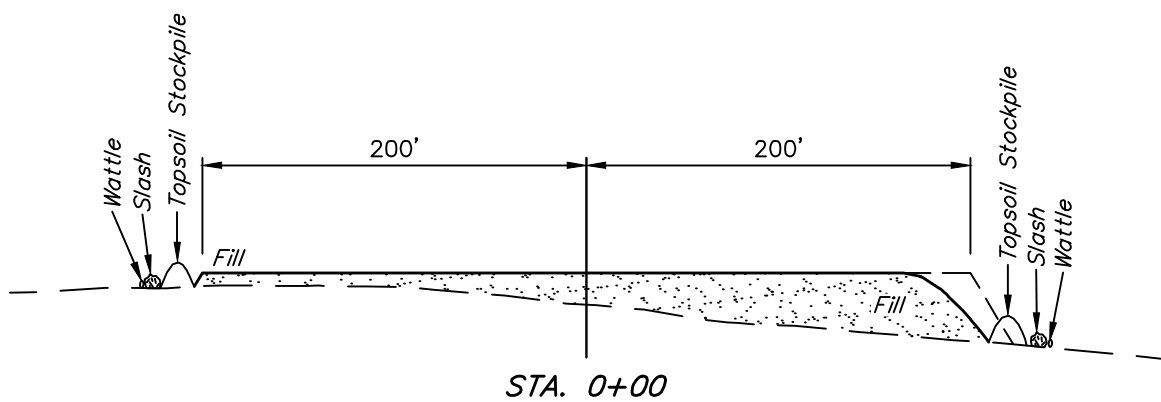
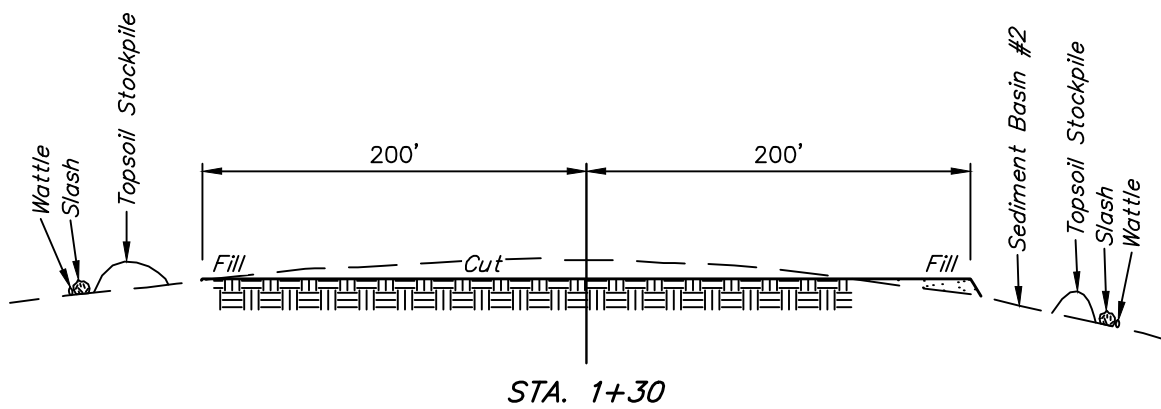
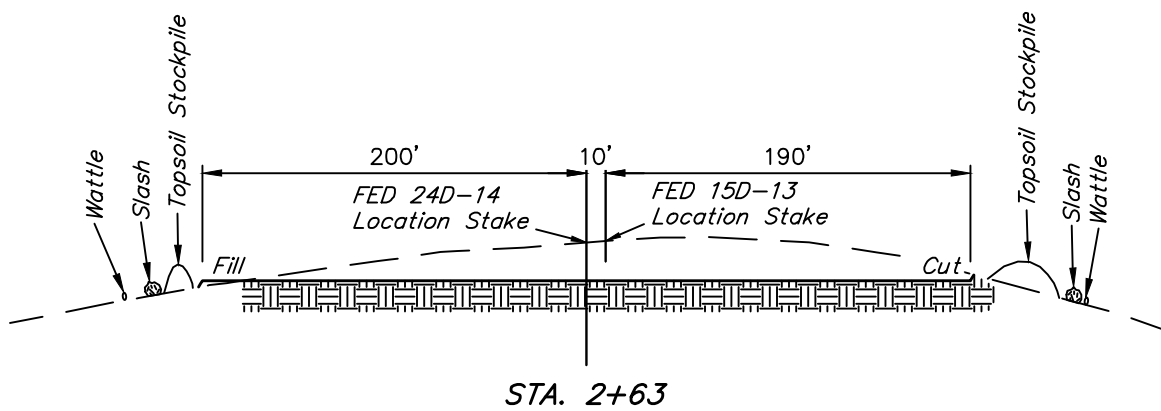
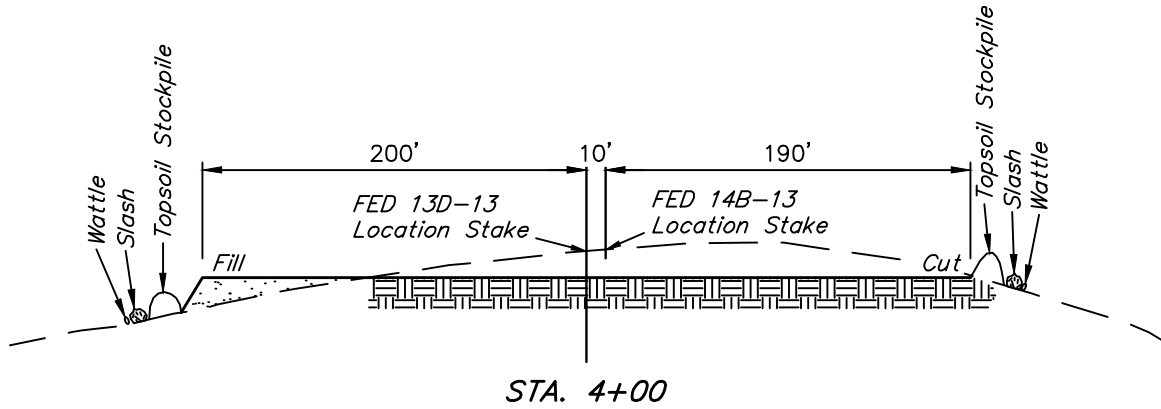
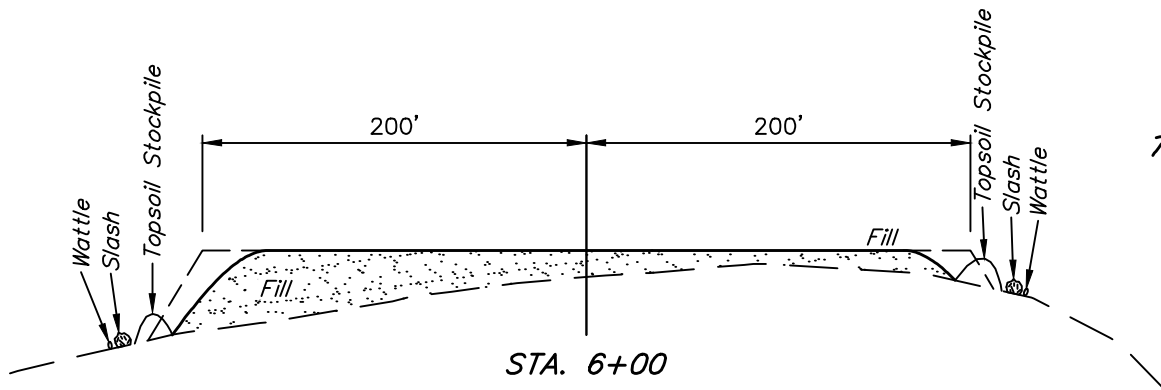




1" = 40'  
X-Section  
Scale  
1" = 100'



APPROXIMATE EARTHWORK QUANTITIES	
(6") TOPSOIL STRIPPING	4,780 Cu. Yds.
REMAINING LOCATION	20,590 Cu. Yds.
<b>TOTAL CUT</b>	<b>25,370 Cu. Yds.</b>
<b>FILL</b>	<b>20,590 Cu. Yds.</b>
EXCESS MATERIAL	4,780 Cu. Yds.
TOPSOIL	4,780 Cu. Yds.
<b>EXCESS UNBALANCE</b> (After Interim Rehabilitation)	<b>0 Cu. Yds.</b>

APPROXIMATE SURFACE DISTURBANCE AREAS		
	DISTANCE	ACRES
WELL SITE DISTURBANCE	NA	±8.121
50' WIDE ACCESS ROAD R-O-W DISTURBANCE (EXISTING 2-TRACK NEEDS UPGRADED)	±1,540'	±1.768
50' WIDE ACCESS ROAD R-O-W DISTURBANCE (NEW CONSTRUCTION ONLY)	±1,061'	±1.218
50' WIDE PIPELINE CORRIDOR R-O-W DISTURBANCE	NA	±6.574
<b>TOTAL SURFACE USE AREA</b>		±17.681

REV: 1 08-10-18 C.D.L. (ROAD & SWMP CHANGE)

- NOTES:**
- Fill quantity includes 5% for compaction.
  - Calculations based on 6" of topsoil stripping.
  - Cut/Fill slopes 1 1/2:1 (Typ.).

**Caerus Oil & Gas LLC**

**ELU A24 496 PAD  
LOT 4, SECTION 24, T4S, R96W, 6th P.M.  
GARFIELD COUNTY, COLORADO**

SURVEYED BY	CODY RICH	05-21-18	SCALE
DRAWN BY	C.D.L.	07-05-18	AS SHOWN
<b>CONSTRUCTION LAYOUT CROSS SECTIONS</b>			<b>FIGURE #2</b>



**UELS, LLC**  
Corporate Office \* 85 South 200 East  
Vernal, UT 84078 \* (435) 789-1017