



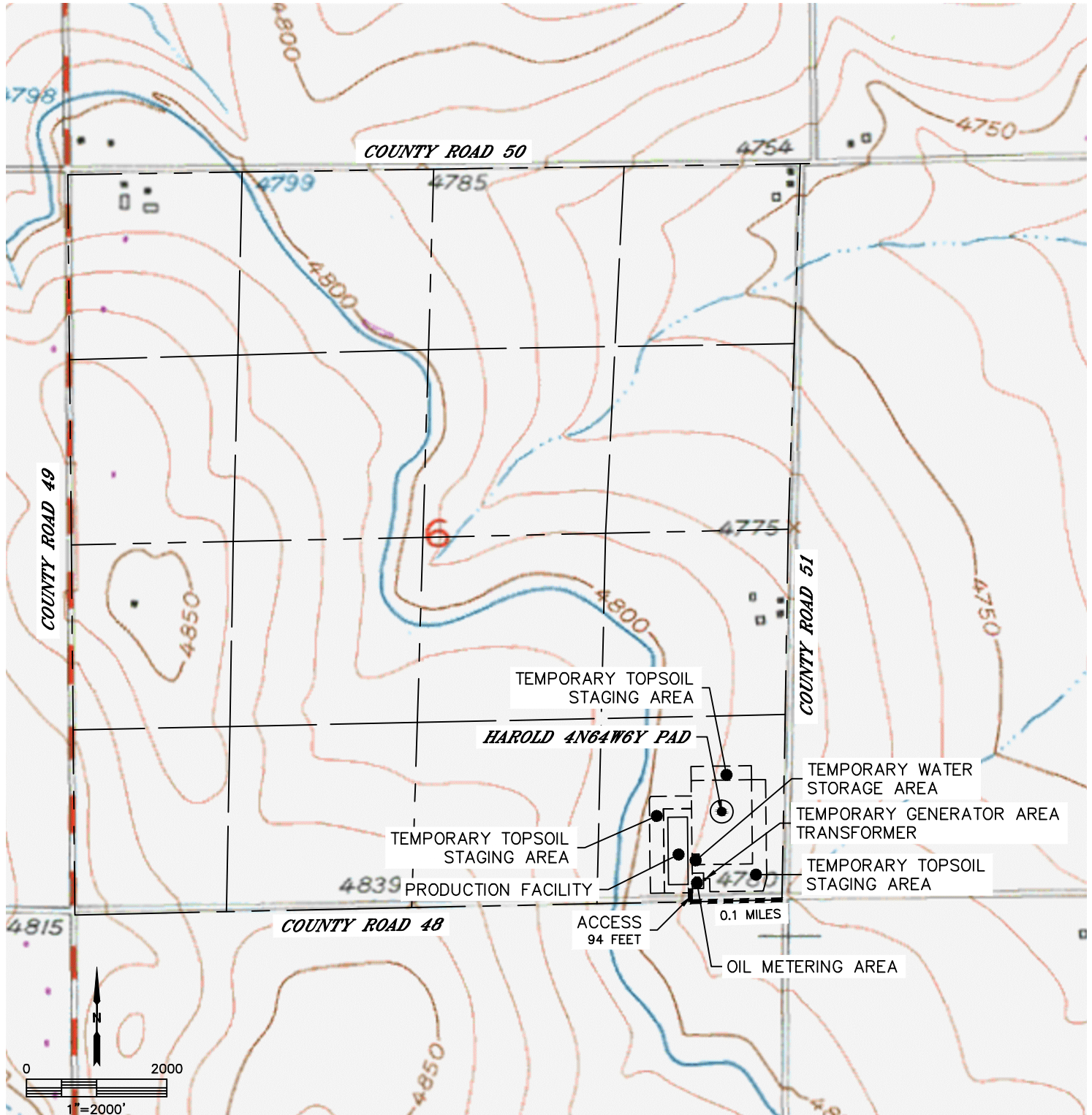
Lat40°, Inc. 6250 W. 10th Street, Unit 2, Greeley, CO 970-515-5294

# ACCESS ROAD MAP

**HAROLD 4N64W6Y PAD**

SECTION: 6  
TOWNSHIP: 4N  
RANGE: 64W  
6TH. P.M.  
WELD COUNTY, CO

DRIVING DIRECTIONS TO HAROLD 4N64W6Y PAD:  
FROM THE INTERSECTION OF COUNTY ROAD 48 AND COUNTY ROAD 51, DRIVE WEST ON COUNTY ROAD 48 FOR 0.1 MILES TO A PROPOSED ACCESS TO THE NORTH, THENCE NORTH FOR 94 FEET TO THE PROPOSED LOCATION.





Lat40°, Inc. 6250 W. 10th Street, Unit 2, Greeley, CO 970-515-5294

# ACCESS ROAD MAP

**HAROLD 4N64W6Y PAD**

SECTION: 6  
TOWNSHIP: 4N  
RANGE: 64W  
6TH. P.M.  
WELD COUNTY, CO

