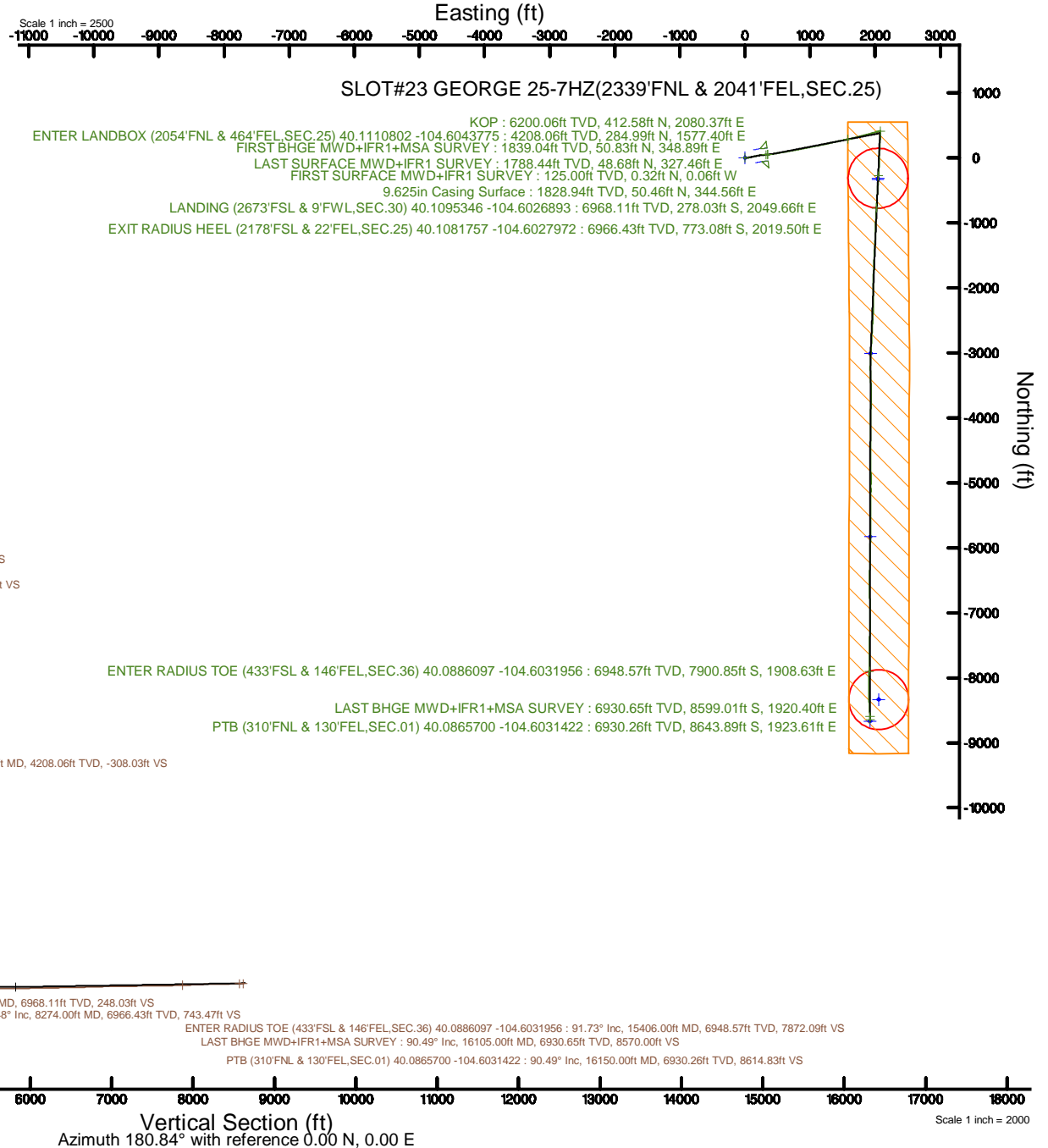


Location:	COLORADO	Spot:	SLOT#23 GEORGE 25-7HZ(2339FNL & 2041FEL,SEC.25)
Field:	WELD COUNTY (UTM/TRUE NORTH)	Well:	GEORGE 25-7HZ
Facility:	SEC.25-T2N-R65W	Wellbore:	GEORGE 25-7HZ PWB
Plot reference wellpath is GEORGE 25-7HZ PWP Rev-A.0		Grid System: NAD83 / UTM Zone 13 North, US feet	
True vertical depths are referenced to Xtrme 22 (17) (RT)		* = Wellpath was transformed from a different geoidetic datum	
Measured depths are referenced to Xtrme 22 (17) (RT)		North Reference: True north	
Xtrme 22 (17) (RT) to Mean Sea Level: 4918 feet		Scale: True distance	
Mean Sea Level to Midline (At Slot: SLOT#23 GEORGE 25-7HZ(2339FNL & Xtrme 22(17) (RT) SEC.25): 0 feet		Depths are in feet	
Coordinates are in feet referenced to Slot		Created by: painstee on 2018-06-19	
		Database: WA_DEN_Anadarko_Defn	



REFERENCE WELLPATH IDENTIFICATION			
Operator	KERR-MCGEE OIL & GAS ONSHORE LP (WA)	Slot	SLOT#23 GEORGE 25-7HZ(2339'FNL & 2041'FEL,SEC.25)
Area	COLORADO	Well	GEORGE 25-7HZ
Field	WELD COUNTY (UTM/TRUE NORTH)	Wellbore	GEORGE 25-7HZ AWB
Facility	SEC.25-T2N-R65W		

REPORT SETUP INFORMATION			
Projection System	NAD83 / UTM Zone 13 North, US feet	Software System	WellArchitect® 5.0
North Reference	True	User	Painsetr
Scale	0.999614	Report Generated	6/19/2018 at 10:44 AM
Convergence at slot	0.26° East	Database/Source file	WA_DEN_Anadarko_Defn/GEORGE_25-7HZ_AWP.xml

WELLPATH LOCATION						
	Local coordinates		Grid coordinates		Geographic coordinates	
	North[ft]	East[ft]	Easting[US ft]	Northing[US ft]	Latitude	Longitude
Slot Location	-1894.99	-1559.94	1749456.01	14567136.92	40°06'37.073"N	104°36'36.061"W
Facility Reference Pt			1751006.90	14569038.09	40°06'55.800"N	104°36'15.984"W
Field Reference Pt			1698235.31	14552047.82	40°04'09.600"N	104°47'36.000"W

WELLPATH DATUM			
Calculation method	Minimum curvature	Xtreme 22 (17') (RT) to Facility Vertical Datum	4918.00ft
Horizontal Reference Pt	Slot	Xtreme 22 (17') (RT) to Mean Sea Level	4918.00ft
Vertical Reference Pt	Xtreme 22 (17') (RT)	Xtreme 22 (17') (RT) to Mud Line at Slot (SLOT#23 GEORGE 25-7HZ(2339'FNL & 2041'FEL,SEC.25))	4918.00ft
MD Reference Pt	Xtreme 22 (17') (RT)	Section Origin	N 0.00, E 0.00 ft
Field Vertical Reference	Mean Sea Level	Section Azimuth	180.84°

REFERENCE WELLPATH IDENTIFICATION			
Operator	KERR-MCGEE OIL & GAS ONSHORE LP (WA)	Slot	SLOT#23 GEORGE 25-7HZ(2339'FNL & 2041'FEL,SEC.25)
Area	COLORADO	Well	GEORGE 25-7HZ
Field	WELD COUNTY (UTM/TRUE NORTH)	Wellbore	GEORGE 25-7HZ AWB
Facility	SEC.25-T2N-R65W		

WELLPATH DATA (223 stations) † = interpolated/extrapolated station												
MD [ft]	Inclination [°]	Azimuth [°]	TVD [ft]	Vert Sect [ft]	North [ft]	East [ft]	Grid East [US ft]	Grid North [US ft]	Latitude	Longitude	DLS [°/100ft]	Comments
0.00†	0.000	349.130	0.00	0.00	0.00	0.00	1749456.01	14567136.92	40°06'37.073"N	104°36'36.061"W	0.00	
17.00	0.000	349.130	17.00	0.00	0.00	0.00	1749456.01	14567136.92	40°06'37.073"N	104°36'36.061"W	0.00	
125.00	0.350	349.130	125.00	-0.32	0.32	-0.06	1749455.95	14567137.24	40°06'37.076"N	104°36'36.062"W	0.32	FIRST SURFACE MWD+IFR1 SURVEY
157.00	0.440	321.100	157.00	-0.51	0.52	-0.16	1749455.85	14567137.43	40°06'37.078"N	104°36'36.063"W	0.66	
221.00	0.830	86.960	221.00	-0.73	0.73	0.15	1749456.16	14567137.65	40°06'37.080"N	104°36'36.059"W	1.79	
252.00	0.880	78.520	251.99	-0.80	0.79	0.61	1749456.61	14567137.71	40°06'37.081"N	104°36'36.053"W	0.44	
284.00	1.410	79.660	283.99	-0.93	0.91	1.24	1749457.24	14567137.83	40°06'37.082"N	104°36'36.045"W	1.66	
315.00	1.930	82.740	314.97	-1.08	1.04	2.13	1749458.13	14567137.97	40°06'37.083"N	104°36'36.034"W	1.70	
347.00	1.980	87.480	346.95	-1.18	1.14	3.22	1749459.22	14567138.07	40°06'37.084"N	104°36'36.020"W	0.53	
379.00	2.460	92.670	378.93	-1.19	1.13	4.45	1749460.46	14567138.07	40°06'37.084"N	104°36'36.004"W	1.62	
411.00	2.940	84.320	410.90	-1.27	1.18	5.96	1749461.96	14567138.12	40°06'37.085"N	104°36'35.984"W	1.94	
442.00	3.080	92.760	441.85	-1.33	1.22	7.58	1749463.58	14567138.17	40°06'37.085"N	104°36'35.963"W	1.50	
474.00	3.330	88.450	473.80	-1.34	1.20	9.37	1749465.37	14567138.16	40°06'37.085"N	104°36'35.940"W	1.08	
505.00	3.820	87.220	504.74	-1.44	1.28	11.30	1749467.30	14567138.24	40°06'37.086"N	104°36'35.916"W	1.60	
537.00	4.310	90.120	536.66	-1.52	1.32	13.57	1749469.57	14567138.30	40°06'37.086"N	104°36'35.886"W	1.66	
569.00	4.610	89.240	568.56	-1.57	1.34	16.05	1749472.05	14567138.33	40°06'37.086"N	104°36'35.854"W	0.96	
600.00	5.410	88.100	599.45	-1.68	1.40	18.76	1749474.76	14567138.40	40°06'37.087"N	104°36'35.820"W	2.60	
632.00	5.450	88.630	631.30	-1.81	1.49	21.79	1749477.78	14567138.50	40°06'37.088"N	104°36'35.781"W	0.20	
664.00	6.020	87.570	663.14	-1.96	1.60	24.98	1749480.98	14567138.62	40°06'37.089"N	104°36'35.739"W	1.81	
696.00	6.770	89.940	694.94	-2.09	1.67	28.55	1749484.54	14567138.71	40°06'37.090"N	104°36'35.694"W	2.48	
728.00	7.030	89.330	726.71	-2.17	1.70	32.39	1749488.38	14567138.75	40°06'37.090"N	104°36'35.644"W	0.84	
759.00	7.510	89.770	757.46	-2.26	1.73	36.31	1749492.30	14567138.80	40°06'37.090"N	104°36'35.594"W	1.56	
791.00	7.380	88.630	789.19	-2.38	1.78	40.46	1749496.45	14567138.88	40°06'37.091"N	104°36'35.540"W	0.61	
823.00	8.700	86.250	820.88	-2.65	1.99	44.93	1749500.91	14567139.10	40°06'37.093"N	104°36'35.483"W	4.25	
854.00	9.540	82.210	851.48	-3.22	2.49	49.81	1749505.79	14567139.63	40°06'37.098"N	104°36'35.420"W	3.41	
886.00	10.370	78.780	883.00	-4.22	3.41	55.27	1749511.24	14567140.57	40°06'37.107"N	104°36'35.350"W	3.19	
918.00	11.070	79.310	914.44	-5.44	4.54	61.11	1749517.08	14567141.73	40°06'37.118"N	104°36'35.274"W	2.21	
949.00	11.470	80.810	944.85	-6.57	5.59	67.08	1749523.04	14567142.80	40°06'37.128"N	104°36'35.198"W	1.60	
980.00	11.690	81.330	975.22	-7.62	6.55	73.22	1749529.18	14567143.79	40°06'37.138"N	104°36'35.119"W	0.79	
1012.00	12.440	79.920	1006.51	-8.81	7.64	79.82	1749535.77	14567144.91	40°06'37.149"N	104°36'35.034"W	2.52	
1044.00	13.050	78.430	1037.72	-10.24	8.97	86.76	1749542.69	14567146.27	40°06'37.162"N	104°36'34.944"W	2.17	
1076.00	13.270	77.200	1068.88	-11.88	10.51	93.88	1749549.80	14567147.83	40°06'37.177"N	104°36'34.853"W	1.11	
1108.00	12.740	75.710	1100.06	-13.67	12.20	100.88	1749556.79	14567149.55	40°06'37.194"N	104°36'34.763"W	1.96	
1139.00	12.880	76.320	1130.29	-15.43	13.86	107.55	1749563.45	14567151.24	40°06'37.210"N	104°36'34.677"W	0.63	
1171.00	13.220	76.140	1161.46	-17.25	15.58	114.57	1749570.46	14567152.99	40°06'37.227"N	104°36'34.587"W	1.07	
1203.00	13.220	75.440	1192.61	-19.15	17.37	121.66	1749577.54	14567154.82	40°06'37.245"N	104°36'34.495"W	0.50	
1234.00	14.500	75.710	1222.71	-21.10	19.22	128.85	1749584.73	14567156.70	40°06'37.263"N	104°36'34.403"W	4.13	
1298.00	15.560	79.660	1284.52	-24.86	22.74	145.06	1749600.91	14567160.28	40°06'37.298"N	104°36'34.194"W	2.30	
1329.00	16.080	79.130	1314.35	-26.54	24.30	153.37	1749609.21	14567161.88	40°06'37.313"N	104°36'34.087"W	1.74	
1361.00	16.700	78.780	1345.05	-28.40	26.03	162.23	1749618.06	14567163.64	40°06'37.330"N	104°36'33.973"W	1.96	
1392.00	17.700	78.000	1374.66	-30.37	27.87	171.21	1749627.03	14567165.53	40°06'37.348"N	104°36'33.857"W	3.31	
1424.00	18.330	77.550	1405.09	-32.61	29.97	180.88	1749636.69	14567167.67	40°06'37.369"N	104°36'33.733"W	2.02	
1455.00	18.940	78.520	1434.47	-34.81	32.02	190.57	1749646.36	14567169.76	40°06'37.389"N	104°36'33.608"W	2.21	
1487.00	19.510	79.920	1464.68	-36.93	33.99	200.92	1749656.70	14567171.77	40°06'37.409"N	104°36'33.475"W	2.29	
1519.00	19.950	80.360	1494.80	-38.93	35.84	211.56	1749667.33	14567173.67	40°06'37.427"N	104°36'33.338"W	1.45	

REFERENCE WELLPATH IDENTIFICATION			
Operator	KERR-MCGEE OIL & GAS ONSHORE LP (WA)	Slot	SLOT#23 GEORGE 25-7HZ(2339'FNL & 2041'FEL,SEC.25)
Area	COLORADO	Well	GEORGE 25-7HZ
Field	WELD COUNTY (UTM/TRUE NORTH)	Wellbore	GEORGE 25-7HZ AWB
Facility	SEC.25-T2N-R65W		

WELLPATH DATA (223 stations) † = interpolated/extrapolated station												
MD [ft]	Inclination [°]	Azimuth [°]	TVD [ft]	Vert Sect [ft]	North [ft]	East [ft]	Grid East [US ft]	Grid North [US ft]	Latitude	Longitude	DLS [°/100ft]	Comments
1550.00	20.570	80.890	1523.88	-40.83	37.59	222.16	1749677.91	14567175.46	40°06'37.444"N	104°36'33.202"W	2.09	
1582.00	20.390	83.350	1553.86	-42.53	39.12	233.24	1749688.99	14567177.05	40°06'37.460"N	104°36'33.059"W	2.75	
1614.00	20.740	84.410	1583.82	-43.89	40.32	244.42	1749700.16	14567178.29	40°06'37.471"N	104°36'32.915"W	1.60	
1646.00	21.490	83.440	1613.67	-45.28	41.54	255.88	1749711.61	14567179.56	40°06'37.484"N	104°36'32.768"W	2.59	
1677.00	21.490	84.490	1642.52	-46.64	42.74	267.18	1749722.89	14567180.81	40°06'37.495"N	104°36'32.622"W	1.24	
1709.00	21.800	84.760	1672.26	-47.92	43.84	278.93	1749734.63	14567181.96	40°06'37.506"N	104°36'32.471"W	1.02	
1740.00	22.850	84.410	1700.94	-49.20	44.95	290.65	1749746.35	14567183.13	40°06'37.517"N	104°36'32.320"W	3.41	
1772.00	23.340	84.760	1730.37	-50.57	46.14	303.15	1749758.83	14567184.37	40°06'37.529"N	104°36'32.159"W	1.59	
1804.00	22.590	84.060	1759.84	-51.96	47.35	315.57	1749771.25	14567185.63	40°06'37.541"N	104°36'31.999"W	2.49	
1835.00	22.810	83.180	1788.44	-53.47	48.68	327.46	1749783.13	14567187.02	40°06'37.554"N	104°36'31.846"W	1.31	LAST SURFACE MWD+IFR1 SURVEY
1890.00	23.310	85.380	1839.04	-55.92	50.83	348.89	1749804.54	14567189.25	40°06'37.575"N	104°36'31.571"W	1.81	FIRST BHGE MWD+IFR1+MSA SURVEY
1977.00	25.280	83.530	1918.33	-59.92	54.31	384.51	1749840.13	14567192.89	40°06'37.610"N	104°36'31.112"W	2.43	
2065.00	24.370	81.970	1998.20	-65.11	58.96	421.16	1749876.74	14567197.70	40°06'37.656"N	104°36'30.640"W	1.27	
2152.00	24.300	79.740	2077.48	-71.33	64.66	456.55	1749912.09	14567203.55	40°06'37.712"N	104°36'30.185"W	1.06	
2240.00	25.340	81.360	2157.35	-77.91	70.71	492.99	1749948.49	14567209.76	40°06'37.772"N	104°36'29.716"W	1.41	
2327.00	26.620	80.460	2235.55	-84.49	76.74	530.62	1749986.08	14567215.95	40°06'37.831"N	104°36'29.232"W	1.54	
2414.00	28.260	80.030	2312.76	-91.86	83.53	570.12	1750025.54	14567222.92	40°06'37.898"N	104°36'28.723"W	1.90	
2502.00	29.310	80.610	2389.89	-99.59	90.65	611.90	1750067.26	14567230.22	40°06'37.969"N	104°36'28.186"W	1.23	
2589.00	28.570	79.660	2466.02	-107.41	97.86	653.37	1750108.69	14567237.60	40°06'38.040"N	104°36'27.652"W	1.00	
2677.00	28.550	80.180	2543.32	-115.38	105.23	694.79	1750150.06	14567245.15	40°06'38.113"N	104°36'27.119"W	0.28	
2764.00	26.850	79.850	2620.34	-122.97	112.24	734.62	1750189.85	14567252.33	40°06'38.182"N	104°36'26.606"W	1.96	
2852.00	27.490	79.670	2698.63	-130.69	119.38	774.16	1750229.34	14567259.64	40°06'38.253"N	104°36'26.097"W	0.73	
2939.00	28.200	78.820	2775.56	-138.86	126.97	814.08	1750269.21	14567267.40	40°06'38.328"N	104°36'25.583"W	0.93	
3027.00	28.890	78.510	2852.86	-147.73	135.23	855.31	1750310.39	14567275.84	40°06'38.409"N	104°36'25.053"W	0.80	
3114.00	29.810	79.770	2928.69	-156.37	143.26	897.19	1750352.22	14567284.05	40°06'38.489"N	104°36'24.514"W	1.27	
3201.00	29.010	78.750	3004.48	-164.93	151.22	939.16	1750394.14	14567292.19	40°06'38.567"N	104°36'23.974"W	1.08	
3289.00	27.470	78.010	3082.01	-173.91	159.60	979.95	1750434.87	14567300.74	40°06'38.650"N	104°36'23.449"W	1.79	
3377.00	28.060	78.580	3159.87	-182.81	167.91	1020.09	1750474.96	14567309.23	40°06'38.732"N	104°36'22.932"W	0.74	
3465.00	27.410	79.640	3237.76	-191.14	175.65	1060.30	1750515.12	14567317.15	40°06'38.809"N	104°36'22.414"W	0.93	
3577.00	28.230	78.470	3336.82	-201.82	185.58	1111.62	1750566.37	14567327.30	40°06'38.907"N	104°36'21.754"W	0.88	
3665.00	28.560	77.840	3414.23	-211.01	194.17	1152.57	1750607.27	14567336.06	40°06'38.992"N	104°36'21.227"W	0.51	
3753.00	27.850	78.710	3491.78	-220.06	202.63	1193.30	1750647.94	14567344.69	40°06'39.075"N	104°36'20.703"W	0.93	
3840.00	28.030	78.700	3568.64	-228.63	210.61	1233.27	1750687.87	14567352.85	40°06'39.154"N	104°36'20.188"W	0.21	
3928.00	28.660	75.620	3646.09	-238.51	219.90	1273.99	1750728.53	14567362.32	40°06'39.246"N	104°36'19.664"W	1.81	
4016.00	28.580	76.450	3723.34	-249.28	230.08	1314.90	1750769.37	14567372.67	40°06'39.346"N	104°36'19.138"W	0.46	
4103.00	28.500	77.020	3799.77	-259.41	239.62	1355.35	1750809.77	14567382.38	40°06'39.441"N	104°36'18.617"W	0.33	
4191.00	28.530	79.220	3877.10	-268.66	248.26	1396.46	1750850.82	14567391.20	40°06'39.526"N	104°36'18.088"W	1.19	
4278.00	29.500	78.840	3953.18	-277.30	256.29	1437.88	1750892.20	14567399.41	40°06'39.605"N	104°36'17.555"W	1.13	
4366.00	28.880	78.010	4030.00	-286.52	264.90	1479.93	1750934.19	14567408.20	40°06'39.690"N	104°36'17.014"W	0.84	
4454.00	30.140	79.180	4106.58	-295.70	273.46	1522.42	1750976.62	14567416.95	40°06'39.775"N	104°36'16.467"W	1.57	
4541.00	28.260	77.570	4182.53	-304.84	282.00	1563.99	1751018.14	14567425.66	40°06'39.859"N	104°36'15.932"W	2.34	
4570.00†	28.319	77.265	4208.06	-308.03	284.99	1577.40	1751031.54	14567428.71	40°06'39.889"N	104°36'15.759"W	0.54	ENTER LANDBOX (2054'FNL & 464'FEL,SEC.25) 40.1110802 -104.6043775
4628.00	28.440	76.660	4259.09	-314.64	291.21	1604.26	1751058.35	14567435.05	40°06'39.950"N	104°36'15.413"W	0.54	
4716.00	29.010	76.530	4336.26	-325.05	301.02	1645.40	1751099.44	14567445.03	40°06'40.047"N	104°36'14.884"W	0.65	
4804.00	29.520	76.550	4413.03	-335.67	311.03	1687.24	1751141.21	14567455.22	40°06'40.146"N	104°36'14.345"W	0.58	

REFERENCE WELLPATH IDENTIFICATION			
Operator	KERR-MCGEE OIL & GAS ONSHORE LP (WA)	Slot	SLOT#23 GEORGE 25-7HZ(2339'FNL & 2041'FEL,SEC.25)
Area	COLORADO	Well	GEORGE 25-7HZ
Field	WELD COUNTY (UTM/TRUE NORTH)	Wellbore	GEORGE 25-7HZ AWB
Facility	SEC.25-T2N-R65W		

WELLPATH DATA (223 stations) † = interpolated/extrapolated station												
MD (ft)	Inclination [°]	Azimuth [°]	TVD (ft)	Vert Sect (ft)	North (ft)	East (ft)	Grid East [US ft]	Grid North [US ft]	Latitude	Longitude	DLS [°/100ft]	Comments
4892.00	27.980	74.940	4490.18	-346.68	321.44	1728.26	1751182.17	14567465.80	40°06'40.249"N	104°36'13.817"W	1.96	
4979.00	25.860	75.960	4567.75	-357.14	331.35	1766.38	1751220.23	14567475.87	40°06'40.347"N	104°36'13.327"W	2.49	
5067.00	24.830	75.490	4647.28	-366.96	340.63	1802.89	1751256.68	14567485.31	40°06'40.439"N	104°36'12.857"W	1.19	
5154.00	24.080	74.190	4726.47	-376.88	350.04	1837.65	1751291.39	14567494.88	40°06'40.532"N	104°36'12.409"W	1.06	
5242.00	21.700	77.750	4807.54	-385.71	358.39	1870.83	1751324.52	14567503.36	40°06'40.614"N	104°36'11.982"W	3.13	
5329.00	19.140	75.090	4889.07	-393.23	365.47	1900.33	1751353.98	14567510.57	40°06'40.684"N	104°36'11.603"W	3.13	
5417.00	17.040	74.350	4972.72	-400.80	372.66	1926.69	1751380.30	14567517.88	40°06'40.755"N	104°36'11.263"W	2.40	
5504.00	15.580	76.410	5056.21	-407.33	378.85	1950.32	1751403.90	14567524.16	40°06'40.816"N	104°36'10.959"W	1.80	
5592.00	13.950	73.050	5141.31	-413.52	384.72	1971.96	1751425.50	14567530.12	40°06'40.874"N	104°36'10.681"W	2.09	
5679.00	13.180	76.150	5225.88	-419.23	390.15	1991.62	1751445.13	14567535.64	40°06'40.928"N	104°36'10.428"W	1.22	
5766.00	11.780	71.420	5310.82	-424.70	395.35	2009.67	1751463.15	14567540.92	40°06'40.979"N	104°36'10.195"W	1.99	
5853.00	10.050	75.010	5396.25	-429.73	400.15	2025.42	1751478.87	14567545.78	40°06'41.026"N	104°36'09.993"W	2.14	
5941.00	8.710	76.240	5483.07	-433.50	403.72	2039.31	1751492.74	14567549.41	40°06'41.062"N	104°36'09.814"W	1.54	
6028.00	7.420	79.060	5569.21	-436.31	406.35	2051.23	1751504.64	14567552.10	40°06'41.088"N	104°36'09.661"W	1.55	
6116.00	5.860	68.930	5656.62	-439.14	409.04	2061.00	1751514.39	14567554.83	40°06'41.114"N	104°36'09.535"W	2.21	
6203.00	3.760	62.610	5743.31	-442.15	411.95	2067.68	1751521.06	14567557.77	40°06'41.143"N	104°36'09.449"W	2.49	
6291.00	2.440	76.300	5831.18	-443.98	413.72	2072.06	1751525.43	14567559.56	40°06'41.161"N	104°36'09.392"W	1.71	
6379.00	1.610	96.070	5919.12	-444.34	414.04	2075.11	1751528.48	14567559.89	40°06'41.164"N	104°36'09.353"W	1.22	
6466.00	0.960	108.550	6006.10	-444.01	413.68	2077.01	1751530.38	14567559.53	40°06'41.160"N	104°36'09.329"W	0.81	
6553.00	0.740	103.070	6093.09	-443.67	413.32	2078.25	1751531.62	14567559.18	40°06'41.157"N	104°36'09.313"W	0.27	
6641.00	1.510	100.100	6181.07	-443.36	412.99	2079.95	1751533.32	14567558.86	40°06'41.153"N	104°36'09.291"W	0.88	
6660.00†	2.445	154.708	6200.06	-442.96	412.58	2080.37	1751533.74	14567558.45	40°06'41.149"N	104°36'09.285"W	10.50	KOP
6728.00	9.190	183.410	6267.68	-436.22	405.83	2080.66	1751534.07	14567551.71	40°06'41.083"N	104°36'09.282"W	10.50	
6816.00	16.550	183.730	6353.41	-416.66	386.29	2079.43	1751532.92	14567532.16	40°06'40.889"N	104°36'09.298"W	8.36	
6903.00	20.830	181.220	6435.81	-388.80	358.44	2078.29	1751531.90	14567504.33	40°06'40.614"N	104°36'09.312"W	5.00	
6991.00	25.380	182.070	6516.73	-354.28	323.93	2077.28	1751531.04	14567469.83	40°06'40.273"N	104°36'09.325"W	5.18	
7078.00	32.660	183.960	6592.76	-312.14	281.83	2074.98	1751528.93	14567427.73	40°06'39.857"N	104°36'09.355"W	8.43	
7166.00	36.990	183.950	6664.98	-261.97	231.70	2071.51	1751525.68	14567377.61	40°06'39.362"N	104°36'09.400"W	4.92	
7253.00	42.250	182.000	6731.97	-206.56	176.32	2068.69	1751523.10	14567322.24	40°06'38.815"N	104°36'09.436"W	6.21	
7341.00	48.770	181.380	6793.61	-143.82	113.61	2066.86	1751521.55	14567259.54	40°06'38.195"N	104°36'09.460"W	7.43	
7428.00	55.380	181.440	6847.05	-75.24	45.04	2065.17	1751520.16	14567190.99	40°06'37.517"N	104°36'09.481"W	7.60	
7516.00	61.600	181.850	6893.02	-0.26	-29.92	2063.01	1751518.33	14567116.05	40°06'36.776"N	104°36'09.509"W	7.08	
7603.00	68.070	182.540	6930.00	78.42	-108.56	2059.98	1751515.65	14567037.43	40°06'35.999"N	104°36'09.548"W	7.47	
7690.00	76.120	183.660	6956.72	161.07	-191.16	2055.49	1751511.52	14566954.85	40°06'35.183"N	104°36'09.606"W	9.33	
7778.00	88.980	184.010	6968.11	248.03	-278.03	2049.66	1751506.07	14566867.98	40°06'34.325"N	104°36'09.681"W	14.62	LANDING (2673'FSL & 9'FWL,SEC.30) 40.1095346 -104.6026893
7865.00	91.080	182.540	6968.06	334.94	-364.88	2044.69	1751501.49	14566781.14	40°06'33.466"N	104°36'09.745"W	2.95	
7953.00	89.690	183.220	6967.47	422.88	-452.77	2040.27	1751497.45	14566693.27	40°06'32.598"N	104°36'09.802"W	1.76	
8040.00	90.180	183.270	6967.57	509.80	-539.63	2035.34	1751492.91	14566606.42	40°06'31.739"N	104°36'09.866"W	0.57	
8127.00	90.340	184.040	6967.18	596.70	-626.45	2029.80	1751487.75	14566519.61	40°06'30.882"N	104°36'09.937"W	0.90	
8215.00	90.590	184.230	6966.46	684.55	-714.22	2023.45	1751481.79	14566431.85	40°06'30.014"N	104°36'10.019"W	0.36	
8274.00†	89.478	183.450	6966.43	743.47	-773.08	2019.50	1751478.10	14566372.99	40°06'29.432"N	104°36'10.070"W	2.30	EXIT RADIUS HEEL (2178'FSL & 22'FEL,SEC.25) 40.1081757 -104.6027972
8302.00	88.950	183.080	6966.81	771.44	-801.04	2017.91	1751476.63	14566345.04	40°06'29.156"N	104°36'10.091"W	2.30	
8390.00	88.710	183.230	6968.61	859.35	-888.88	2013.07	1751472.17	14566257.21	40°06'28.288"N	104°36'10.153"W	0.32	
8477.00	88.370	182.650	6970.82	946.26	-975.74	2008.60	1751468.09	14566170.37	40°06'27.430"N	104°36'10.211"W	0.77	
8565.00	88.860	181.370	6972.95	1034.21	-1063.66	2005.52	1751465.39	14566082.47	40°06'26.561"N	104°36'10.250"W	1.56	

REFERENCE WELLPATH IDENTIFICATION			
Operator	KERR-MCGEE OIL & GAS ONSHORE LP (WA)	Slot	SLOT#23 GEORGE 25-7HZ(2339'FNL & 2041'FEL,SEC.25)
Area	COLORADO	Well	GEORGE 25-7HZ
Field	WELD COUNTY (UTM/TRUE NORTH)	Wellbore	GEORGE 25-7HZ AWB
Facility	SEC.25-T2N-R65W		

WELLPATH DATA (223 stations)												
MD [ft]	Inclination [°]	Azimuth [°]	TVD [ft]	Vert Sect [ft]	North [ft]	East [ft]	Grid East [US ft]	Grid North [US ft]	Latitude	Longitude	DLS [°/100ft]	Comments
8652.00	88.650	181.300	6974.84	1121.19	-1150.62	2003.49	1751463.75	14565995.54	40°06'25.702"N	104°36'10.277"W	0.25	
8740.00	90.430	182.180	6975.55	1209.17	-1238.57	2000.82	1751461.46	14565907.61	40°06'24.833"N	104°36'10.311"W	2.26	
8827.00	92.120	183.670	6973.61	1296.09	-1325.43	1996.38	1751457.41	14565820.77	40°06'23.974"N	104°36'10.368"W	2.59	
8915.00	89.910	182.770	6972.05	1383.99	-1413.27	1991.44	1751452.85	14565732.94	40°06'23.106"N	104°36'10.432"W	2.71	
9002.00	89.820	183.060	6972.26	1470.93	-1500.16	1987.02	1751448.81	14565646.07	40°06'22.247"N	104°36'10.489"W	0.35	
9089.00	89.350	183.070	6972.89	1557.87	-1587.03	1982.37	1751444.54	14565559.21	40°06'21.389"N	104°36'10.549"W	0.54	
9178.00	90.710	182.170	6972.84	1646.82	-1675.93	1978.30	1751440.87	14565470.32	40°06'20.510"N	104°36'10.601"W	1.83	
9265.00	90.680	181.530	6971.79	1733.80	-1762.88	1975.49	1751438.44	14565383.40	40°06'19.651"N	104°36'10.638"W	0.74	
9352.00	90.310	181.000	6971.04	1820.79	-1849.86	1973.57	1751436.90	14565296.45	40°06'18.792"N	104°36'10.662"W	0.74	
9440.00	90.370	179.970	6970.51	1908.79	-1937.85	1972.82	1751436.54	14565208.49	40°06'17.922"N	104°36'10.672"W	1.17	
9531.00	90.030	179.120	6970.20	1999.76	-2028.84	1973.55	1751437.66	14565117.53	40°06'17.023"N	104°36'10.663"W	1.01	
9621.00	90.150	181.030	6970.05	2089.75	-2118.84	1973.43	1751437.94	14565027.57	40°06'16.134"N	104°36'10.664"W	2.13	
9712.00	89.480	180.180	6970.35	2180.75	-2209.83	1972.47	1751437.38	14564936.61	40°06'15.234"N	104°36'10.677"W	1.19	
9803.00	90.650	182.310	6970.24	2271.74	-2300.81	1970.49	1751435.80	14564845.66	40°06'14.335"N	104°36'10.702"W	2.67	
9895.00	91.170	181.960	6968.78	2363.70	-2392.73	1967.06	1751432.78	14564753.76	40°06'13.427"N	104°36'10.747"W	0.68	
9982.00	90.370	183.300	6967.61	2450.65	-2479.63	1963.07	1751429.17	14564666.88	40°06'12.568"N	104°36'10.798"W	1.79	
10070.00	89.940	183.120	6967.38	2538.58	-2567.49	1958.14	1751424.63	14564579.03	40°06'11.700"N	104°36'10.862"W	0.53	
10157.00	90.000	183.430	6967.42	2625.50	-2654.35	1953.17	1751420.04	14564492.19	40°06'10.842"N	104°36'10.926"W	0.36	
10245.00	89.910	182.520	6967.49	2713.43	-2742.23	1948.61	1751415.86	14564404.32	40°06'09.973"N	104°36'10.984"W	1.04	
10332.00	90.030	183.270	6967.54	2800.38	-2829.11	1944.21	1751411.85	14564317.45	40°06'09.115"N	104°36'11.041"W	0.87	
10420.00	90.030	183.250	6967.49	2888.30	-2916.97	1939.21	1751407.23	14564229.61	40°06'08.246"N	104°36'11.106"W	0.02	
10507.00	90.250	183.500	6967.28	2975.21	-3003.82	1934.09	1751402.49	14564142.77	40°06'07.388"N	104°36'11.172"W	0.38	
10595.00	90.310	182.940	6966.85	3063.14	-3091.68	1929.14	1751397.94	14564054.92	40°06'06.520"N	104°36'11.235"W	0.64	
10683.00	90.220	181.570	6966.44	3151.11	-3179.61	1925.68	1751394.86	14563967.01	40°06'05.651"N	104°36'11.280"W	1.56	
10771.00	89.820	179.200	6966.41	3239.10	-3267.60	1925.09	1751394.66	14563879.05	40°06'04.781"N	104°36'11.288"W	2.73	
10859.00	89.050	177.140	6967.28	3326.99	-3355.55	1927.90	1751397.85	14563791.16	40°06'03.912"N	104°36'11.252"W	2.50	
10946.00	89.480	176.690	6968.39	3413.78	-3442.41	1932.58	1751402.91	14563704.35	40°06'03.054"N	104°36'11.191"W	0.72	
11033.00	89.450	178.550	6969.21	3500.64	-3529.33	1936.19	1751406.90	14563617.48	40°06'02.195"N	104°36'11.145"W	2.14	
11121.00	87.820	178.970	6971.30	3588.55	-3617.28	1938.10	1751409.19	14563529.57	40°06'01.326"N	104°36'11.121"W	1.91	
11208.00	89.540	181.890	6973.31	3675.51	-3704.24	1937.44	1751408.92	14563442.64	40°06'00.466"N	104°36'11.129"W	3.89	
11296.00	89.880	181.360	6973.75	3763.50	-3792.21	1934.95	1751406.81	14563354.70	40°05'59.597"N	104°36'11.161"W	0.72	
11383.00	89.780	181.310	6974.01	3850.50	-3879.18	1932.92	1751405.17	14563267.75	40°05'58.738"N	104°36'11.187"W	0.13	
11471.00	89.570	181.400	6974.51	3938.49	-3967.16	1930.84	1751403.47	14563179.80	40°05'57.868"N	104°36'11.214"W	0.26	
11559.00	89.450	179.860	6975.26	4026.49	-4055.15	1929.87	1751402.89	14563091.84	40°05'56.999"N	104°36'11.227"W	1.76	
11646.00	89.200	179.770	6976.29	4113.47	-4142.14	1930.15	1751403.55	14563004.89	40°05'56.139"N	104°36'11.223"W	0.31	
11734.00	89.080	178.940	6977.61	4201.43	-4230.12	1931.15	1751404.93	14562916.94	40°05'55.270"N	104°36'11.211"W	0.95	
11821.00	89.600	180.820	6978.61	4288.40	-4317.11	1931.33	1751405.49	14562829.99	40°05'54.410"N	104°36'11.208"W	2.24	
11908.00	90.030	180.710	6978.89	4375.40	-4404.10	1930.17	1751404.71	14562743.03	40°05'53.550"N	104°36'11.223"W	0.51	
11996.00	90.520	179.920	6978.47	4463.40	-4492.10	1929.68	1751404.62	14562655.06	40°05'52.681"N	104°36'11.230"W	1.06	
12083.00	88.920	179.170	6978.89	4550.37	-4579.09	1930.37	1751405.69	14562568.11	40°05'51.821"N	104°36'11.221"W	2.03	
12171.00	89.080	178.870	6980.43	4638.31	-4667.07	1931.88	1751407.58	14562480.18	40°05'50.952"N	104°36'11.202"W	0.39	
12258.00	89.410	179.840	6981.58	4725.28	-4754.05	1932.86	1751408.94	14562393.23	40°05'50.092"N	104°36'11.189"W	1.18	
12346.00	89.750	179.410	6982.22	4813.25	-4842.05	1933.43	1751409.90	14562305.27	40°05'49.222"N	104°36'11.182"W	0.62	
12433.00	89.290	180.180	6982.95	4900.23	-4929.04	1933.74	1751410.59	14562218.31	40°05'48.363"N	104°36'11.178"W	1.03	
12521.00	89.510	180.140	6983.87	4988.22	-5017.04	1933.50	1751410.73	14562130.35	40°05'47.493"N	104°36'11.181"W	0.25	

REFERENCE WELLPATH IDENTIFICATION			
Operator	KERR-MCGEE OIL & GAS ONSHORE LP (WA)	Slot	SLOT#23 GEORGE 25-7HZ(2339'FNL & 2041'FEL,SEC.25)
Area	COLORADO	Well	GEORGE 25-7HZ
Field	WELD COUNTY (UTM/TRUE NORTH)	Wellbore	GEORGE 25-7HZ AWB
Facility	SEC.25-T2N-R65W		

WELLPATH DATA (223 stations) † = interpolated/extrapolated station												
MD [ft]	Inclination [°]	Azimuth [°]	TVD [ft]	Vert Sect [ft]	North [ft]	East [ft]	Grid East [US ft]	Grid North [US ft]	Latitude	Longitude	DLS [°/100ft]	Comments
12608.00	90.060	179.860	6984.20	5075.21	-5104.04	1933.50	1751411.11	14562043.39	40°05'46.633"N	104°36'11.181"W	0.71	
12696.00	90.180	180.770	6984.01	5163.21	-5192.03	1933.01	1751411.01	14561955.42	40°05'45.764"N	104°36'11.188"W	1.04	
12783.00	91.140	180.290	6983.01	5250.20	-5279.02	1932.21	1751410.59	14561868.46	40°05'44.904"N	104°36'11.198"W	1.23	
12871.00	89.230	179.780	6982.73	5338.19	-5367.02	1932.16	1751410.92	14561780.50	40°05'44.035"N	104°36'11.199"W	2.25	
12958.00	89.910	179.140	6983.38	5425.16	-5454.01	1932.98	1751412.12	14561693.55	40°05'43.175"N	104°36'11.188"W	1.07	
13046.00	89.080	180.320	6984.16	5513.14	-5542.01	1933.39	1751412.92	14561605.59	40°05'42.305"N	104°36'11.183"W	1.64	
13133.00	89.010	181.320	6985.61	5600.12	-5628.98	1932.15	1751412.06	14561518.64	40°05'41.446"N	104°36'11.199"W	1.15	
13221.00	88.520	180.970	6987.50	5688.10	-5716.94	1930.39	1751410.69	14561430.71	40°05'40.577"N	104°36'11.222"W	0.68	
13308.00	89.350	181.720	6989.12	5775.08	-5803.90	1928.35	1751409.03	14561343.78	40°05'39.717"N	104°36'11.248"W	1.29	
13396.00	90.980	181.460	6988.87	5863.07	-5891.87	1925.90	1751406.97	14561255.84	40°05'38.848"N	104°36'11.280"W	1.88	
13483.00	91.570	181.340	6986.93	5950.04	-5978.82	1923.78	1751405.23	14561168.91	40°05'37.989"N	104°36'11.307"W	0.69	
13571.00	91.080	180.800	6984.90	6038.02	-6066.78	1922.14	1751403.98	14561080.98	40°05'37.119"N	104°36'11.328"W	0.83	
13658.00	90.830	180.330	6983.45	6125.01	-6153.76	1921.28	1751403.50	14560994.02	40°05'36.260"N	104°36'11.339"W	0.61	
13745.00	91.260	181.780	6981.86	6211.99	-6240.73	1919.68	1751402.28	14560907.08	40°05'35.400"N	104°36'11.360"W	1.74	
13833.00	91.290	181.690	6979.90	6299.96	-6328.67	1917.01	1751400.00	14560819.17	40°05'34.531"N	104°36'11.395"W	0.11	
13920.00	91.020	180.900	6978.15	6386.93	-6415.63	1915.05	1751398.42	14560732.24	40°05'33.672"N	104°36'11.420"W	0.96	
14008.00	90.920	180.580	6976.66	6474.92	-6503.61	1913.91	1751397.67	14560644.29	40°05'32.803"N	104°36'11.435"W	0.38	
14095.00	91.140	179.880	6975.09	6561.90	-6590.59	1913.56	1751397.70	14560557.33	40°05'31.943"N	104°36'11.439"W	0.84	
14183.00	91.850	178.960	6972.80	6649.84	-6678.56	1914.45	1751398.98	14560469.41	40°05'31.074"N	104°36'11.428"W	1.32	
14270.00	92.190	178.590	6969.73	6736.73	-6765.48	1916.31	1751401.22	14560382.53	40°05'30.215"N	104°36'11.404"W	0.58	
14357.00	91.200	179.280	6967.16	6823.64	-6852.43	1917.93	1751403.21	14560295.62	40°05'29.356"N	104°36'11.383"W	1.39	
14444.00	91.910	178.220	6964.80	6910.55	-6939.37	1919.82	1751405.49	14560208.72	40°05'28.496"N	104°36'11.359"W	1.47	
14532.00	90.680	178.760	6962.81	6998.45	-7027.32	1922.14	1751408.19	14560120.82	40°05'27.627"N	104°36'11.329"W	1.53	
14619.00	90.090	179.880	6962.22	7085.42	-7114.31	1923.18	1751409.61	14560033.87	40°05'26.768"N	104°36'11.316"W	1.46	
14707.00	90.650	182.160	6961.66	7173.41	-7202.29	1921.61	1751408.43	14559945.92	40°05'25.898"N	104°36'11.336"W	2.67	
14794.00	91.230	181.560	6960.23	7260.39	-7289.23	1918.79	1751405.98	14559859.00	40°05'25.039"N	104°36'11.373"W	0.96	
14882.00	91.690	181.450	6957.99	7348.35	-7377.17	1916.47	1751404.06	14559771.08	40°05'24.170"N	104°36'11.402"W	0.54	
14969.00	91.940	181.420	6955.23	7435.30	-7464.10	1914.30	1751402.26	14559684.18	40°05'23.311"N	104°36'11.431"W	0.29	
15057.00	89.750	179.400	6953.93	7523.28	-7552.08	1913.67	1751402.02	14559596.23	40°05'22.442"N	104°36'11.439"W	3.39	
15145.00	89.880	178.720	6954.22	7611.24	-7640.06	1915.11	1751403.85	14559508.29	40°05'21.572"N	104°36'11.420"W	0.79	
15232.00	91.260	180.920	6953.35	7698.21	-7727.05	1915.39	1751404.50	14559421.34	40°05'20.712"N	104°36'11.417"W	2.98	
15320.00	91.660	182.990	6951.11	7786.16	-7814.97	1912.38	1751401.89	14559333.44	40°05'19.844"N	104°36'11.456"W	2.40	
15406.00†	91.728	182.023	6948.57	7872.09	-7900.85	1908.63	1751398.51	14559247.58	40°05'18.995"N	104°36'11.504"W	1.13	ENTER RADIUS TOE (433'FSL & 146'FEL,SEC.36) 40.0886097 -104.6031956
15408.00	91.730	182.000	6948.51	7874.09	-7902.84	1908.56	1751398.45	14559245.58	40°05'18.975"N	104°36'11.505"W	1.13	
15495.00	91.880	181.920	6945.77	7961.03	-7989.75	1905.58	1751395.86	14559158.70	40°05'18.116"N	104°36'11.543"W	0.20	
15583.00	92.190	181.250	6942.64	8048.96	-8077.66	1903.15	1751393.81	14559070.81	40°05'17.248"N	104°36'11.575"W	0.84	
15671.00	92.680	180.470	6938.90	8136.88	-8165.57	1901.83	1751392.88	14558982.93	40°05'16.379"N	104°36'11.592"W	1.05	
15759.00	90.950	178.160	6936.11	8224.80	-8253.51	1902.88	1751394.31	14558895.03	40°05'15.510"N	104°36'11.578"W	3.28	
15846.00	90.890	177.460	6934.72	8311.66	-8340.43	1906.21	1751398.02	14558808.16	40°05'14.651"N	104°36'11.536"W	0.81	
15934.00	91.080	177.010	6933.20	8399.48	-8428.32	1910.45	1751402.64	14558720.33	40°05'13.782"N	104°36'11.481"W	0.56	
16022.00	90.920	176.850	6931.67	8487.26	-8516.18	1915.16	1751407.74	14558632.52	40°05'12.914"N	104°36'11.420"W	0.26	
16105.00	90.490	175.910	6930.65	8570.00	-8599.01	1920.40	1751413.34	14558549.75	40°05'12.096"N	104°36'11.353"W	1.25	LAST BHGE MWD+IFR1+MSA SURVEY
16150.00	90.490	175.910	6930.26	8614.83	-8643.89	1923.61	1751416.75	14558504.90	40°05'11.652"N	104°36'11.312"W	0.00	PTB (310'FNL & 130'FEL,SEC.01) 40.0865700 -104.6031422

REFERENCE WELLPATH IDENTIFICATION			
Operator	KERR-MCGEE OIL & GAS ONSHORE LP (WA)	Slot	SLOT#23 GEORGE 25-7HZ(2339'FNL & 2041'FEL,SEC.25)
Area	COLORADO	Well	GEORGE 25-7HZ
Field	WELD COUNTY (UTM/TRUE NORTH)	Wellbore	GEORGE 25-7HZ AWB
Facility	SEC.25-T2N-R65W		

HOLE & CASING SECTIONS - Ref Wellbore: GEORGE 25-7HZ AWB Ref Wellpath: GEORGE 25-7HZ AWP									
String/Diameter	Start MD [ft]	End MD [ft]	Interval [ft]	Start TVD [ft]	End TVD [ft]	Start N/S [ft]	Start E/W [ft]	End N/S [ft]	End E/W [ft]
9.625in Casing Surface	17.00	1879.00	1862.00	17.00	1828.94	0.00	0.00	50.46	344.56

TARGETS								
Name	TVD [ft]	North [ft]	East [ft]	Grid East [US ft]	Grid North [US ft]	Latitude	Longitude	Shape
SEC.36-T2N-R65W	0.00	85.91	-27.43	1749428.22	14567222.67	40°06'37.922"N	104°36'36.414"W	polygon
SEC.25-T2N-R65W	20.00	10003.87	-1352.89	1748059.81	14577130.87	40°08'15.932"N	104°36'53.480"W	polygon
GEORGE 25-7HZ BHL REV-1(333'FNL & 133'FEL,SEC.01)	6925.00	-8667.21	1920.87	1751414.11	14558481.58	40°05'11.422"N	104°36'11.347"W	point
GEORGE 25-7HZ HEEL REV-1(2615'FSL & 1'FEL,SEC.25)	6971.00	-335.82	2042.75	1751499.42	14566810.19	40°06'33.754"N	104°36'09.770"W	point
GEORGE 25-7HZ INT. TARGET@5800'VS	6971.00	-5828.76	1923.66	1751404.45	14561318.91	40°05'39.472"N	104°36'11.309"W	point
GEORGE 25-7HZ LANDBOX	6971.00	0.00	0.00	1749456.01	14567136.92	40°06'37.073"N	104°36'36.061"W	polygon
GEORGE 25-7HZ LAT TARGET 1	6971.00	-3006.62	1929.00	1751397.42	14564139.95	40°06'07.360"N	104°36'11.237"W	point
GEORGE 25-7HZ RADIUS 1	6971.00	-312.90	2043.33	1751499.90	14566833.10	40°06'33.980"N	104°36'09.763"W	polygon
GEORGE 25-7HZ RADIUS 2	6971.00	-8335.34	2054.07	1751545.80	14558813.90	40°05'14.701"N	104°36'09.633"W	polygon

WELLPATH COMPOSITION - Ref Wellbore: GEORGE 25-7HZ AWB Ref Wellpath: GEORGE 25-7HZ AWP				
Start MD [ft]	End MD [ft]	Positional Uncertainty Model	Log Name/Comment	Wellbore
17.00	1835.00	Custom APC ISCWSA REV 2 MWD+IFR1 (approximation)	Custom APC ISCWSA Rev-2 MWD+IFR1 <125 - 1835>	GEORGE 25-7HZ AWB
1835.00	16105.00	Custom APC ISCWSA REV 2 MWD+IFR1+MSA (approximation)	BHGE Custom APC ISCWSA Rev-2 MWD+IFR1+MSA <1890 - 16105>	GEORGE 25-7HZ AWB
16105.00	16150.00	Blind Drilling (std)	Projection to bit	GEORGE 25-7HZ AWB

REFERENCE WELLPATH IDENTIFICATION			
Operator	KERR-MCGEE OIL & GAS ONSHORE LP (WA)	Slot	SLOT#23 GEORGE 25-7HZ(2339'FNL & 2041'FEL,SEC.25)
Area	COLORADO	Well	GEORGE 25-7HZ
Field	WELD COUNTY (UTM/TRUE NORTH)	Wellbore	GEORGE 25-7HZ AWB
Facility	SEC.25-T2N-R65W		

WELLPATH COMMENTS				
MD [ft]	Inclination [°]	Azimuth [°]	TVD [ft]	Comment
125.00	0.350	349.130	125.00	FIRST SURFACE MWD+IFR1 SURVEY
1835.00	22.810	83.180	1788.44	LAST SURFACE MWD+IFR1 SURVEY
1890.00	23.310	85.380	1839.04	FIRST BHGE MWD+IFR1+MSA SURVEY
4570.00	28.319	77.265	4208.06	ENTER LANDBOX (2054'FNL & 464'FEL, SEC.25) 40.1110802 -104.6043775
6660.00	2.445	154.708	6200.06	KOP
7778.00	88.980	184.010	6968.11	LANDING (2673'FSL & 9'FWL, SEC.30) 40.1095346 -104.6026893
8274.00	89.478	183.450	6966.43	EXIT RADIUS HEEL (2178'FSL & 22'FEL, SEC.25) 40.1081757 -104.6027972
15406.00	91.728	182.023	6948.57	ENTER RADIUS TOE (433'FSL & 146'FEL, SEC.36) 40.0886097 -104.6031956
16105.00	90.490	175.910	6930.65	LAST BHGE MWD+IFR1+MSA SURVEY
16150.00	90.490	175.910	6930.26	PTB (310'FNL & 130'FEL, SEC.01) 40.0865700 -104.6031422