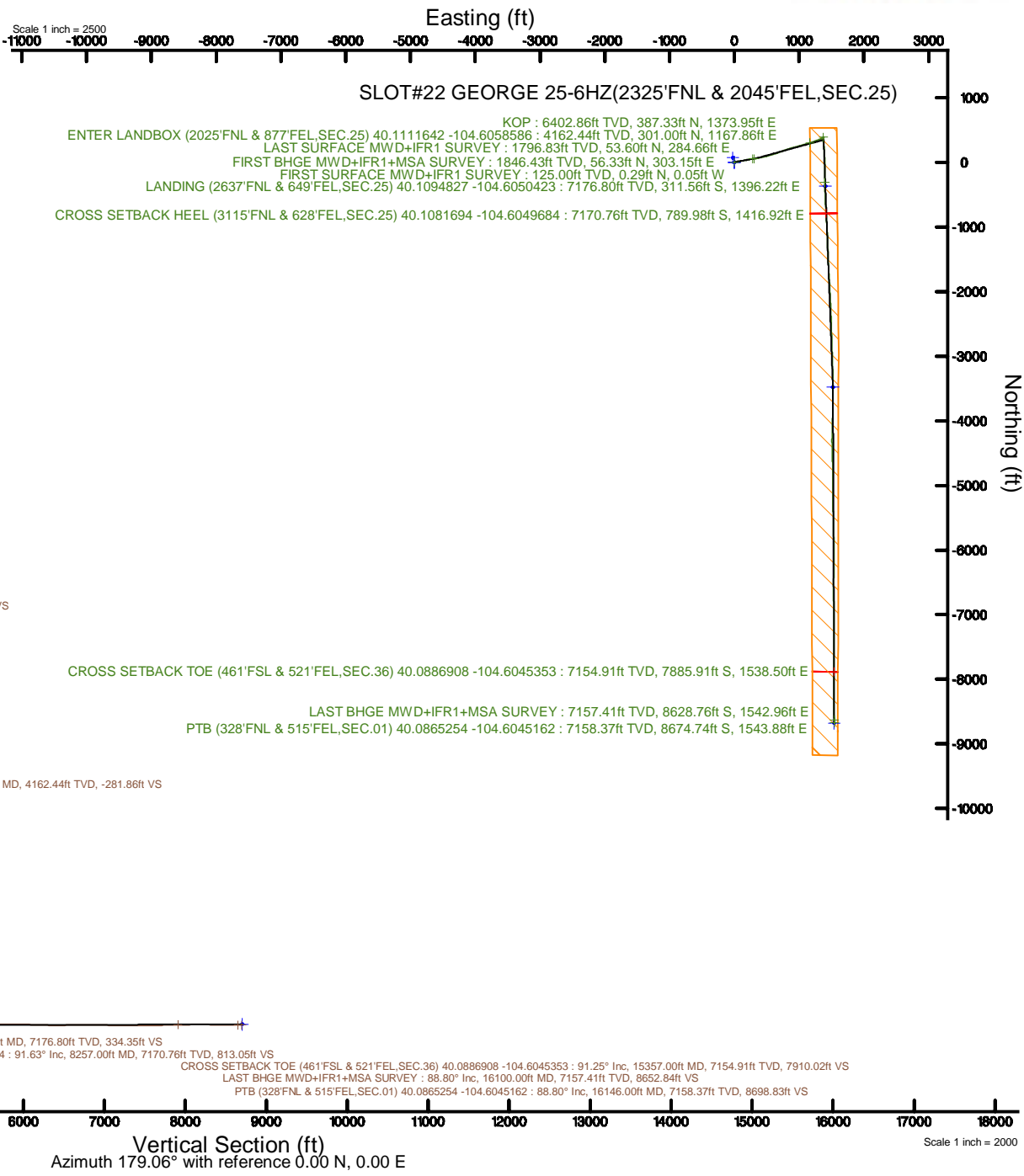


KERR-MCGEE OIL & GAS ONSHORE LP (WA)

Location: COLORADO	Slot: SLOT#22 GEORGE 25-6HZ(2325'FNL & 2045'FEL,SEC.25)
Field: WELD COUNTY (UTM/TRUE NORTH)	Well: GEORGE 25-6HZ
Facility: SEC.25-T2N-R65W	Wellbore: GEORGE 25-6HZ PWB
Plot reference wellpath is GEORGE 25-6HZ PWP Rev-A.0	
True vertical depths are referenced to Xtreme 22 (17) (RT)	Grid System: NAD83 / UTM Zone 13 North, US feet
Measured depths are referenced to Xtreme 22 (17) (RT)	* = Wellpath was transformed from a different geodetic datum
Xtreme 22 (17) (RT) to Mean Sea Level: 4918 feet	North Reference: True north
Mean Sea Level to Mud line (At Slot: SLOT#22 GEORGE 25-6HZ(2325'FNL & 2045'FEL,SEC.25)): 0 feet	Scale: True distance
Coordinates are in feet referenced to Slot	Depths are in feet
	Created by: painsetr on 2018-06-26
	Database: WA_DEN_Anadarko_Defn



REFERENCE WELLPATH IDENTIFICATION			
Operator	KERR-MCGEE OIL & GAS ONSHORE LP (WA)	Slot	SLOT#22 GEORGE 25-6HZ(2325'FNL & 2045'FEL,SEC.25)
Area	COLORADO	Well	GEORGE 25-6HZ
Field	WELD COUNTY (UTM/TRUE NORTH)	Wellbore	GEORGE 25-6HZ AWP
Facility	SEC.25-T2N-R65W		

REPORT SETUP INFORMATION			
Projection System	NAD83 / UTM Zone 13 North, US feet	Software System	WellArchitect® 5.0
North Reference	True	User	Painsetr
Scale	0.999614	Report Generated	6/26/2018 at 8:17 AM
Convergence at slot	0.26° East	Database/Source file	WA_DEN_Anadarko_Defn/GEORGE_25-6HZ_AWP.xml

WELLPATH LOCATION						
	Local coordinates		Grid coordinates		Geographic coordinates	
	North[ft]	East[ft]	Easting[US ft]	Northing[US ft]	Latitude	Longitude
Slot Location	-1880.42	-1564.68	1749451.21	14567151.46	40°06'37.217"N	104°36'36.122"W
Facility Reference Pt			1751006.90	14569038.09	40°06'55.800"N	104°36'15.984"W
Field Reference Pt			1698235.31	14552047.82	40°04'09.600"N	104°47'36.000"W

WELLPATH DATUM			
Calculation method	Minimum curvature	Xtreme 22 (17") (RT) to Facility Vertical Datum	4918.00ft
Horizontal Reference Pt	Slot	Xtreme 22 (17") (RT) to Mean Sea Level	4918.00ft
Vertical Reference Pt	Xtreme 22 (17") (RT)	Xtreme 22 (17") (RT) to Mud Line at Slot (SLOT#22 GEORGE 25-6HZ(2325'FNL & 2045'FEL,SEC.25))	4918.00ft
MD Reference Pt	Xtreme 22 (17") (RT)	Section Origin	N 0.00, E 0.00 ft
Field Vertical Reference	Mean Sea Level	Section Azimuth	179.06°

REFERENCE WELLPATH IDENTIFICATION			
Operator	KERR-MCGEE OIL & GAS ONSHORE LP (WA)	Slot	SLOT#22 GEORGE 25-6HZ(2325'FNL & 2045'FEL,SEC.25)
Area	COLORADO	Well	GEORGE 25-6HZ
Field	WELD COUNTY (UTM/TRUE NORTH)	Wellbore	GEORGE 25-6HZ AWP
Facility	SEC.25-T2N-R65W		

WELLPATH DATA (222 stations) † = interpolated/extrapolated station												
MD [ft]	Inclination [°]	Azimuth [°]	TVD [ft]	Vert Sect [ft]	North [ft]	East [ft]	Grid East [US ft]	Grid North [US ft]	Latitude	Longitude	DLS ["/100ft]	Comments
0.00	0.00	350.800	0.00	0.00	0.00	0.00	1749451.21	14567151.46	40°06'37.217"N	104°36'36.122"W	0.00	
17.00	0.00	350.800	17.00	0.00	0.00	0.00	1749451.21	14567151.46	40°06'37.217"N	104°36'36.122"W	0.00	
125.00	0.310	350.800	125.00	-0.29	0.29	-0.05	1749451.16	14567151.75	40°06'37.220"N	104°36'36.123"W	0.29	FIRST SURFACE MWD+IFR1 SURVEY
157.00	0.220	357.920	157.00	-0.44	0.44	-0.06	1749451.14	14567151.90	40°06'37.221"N	104°36'36.123"W	0.30	
189.00	0.220	313.100	189.00	-0.54	0.54	-0.11	1749451.10	14567152.00	40°06'37.222"N	104°36'36.123"W	0.52	
221.00	0.090	326.460	221.00	-0.60	0.60	-0.17	1749451.04	14567152.06	40°06'37.223"N	104°36'36.124"W	0.42	
252.00	0.180	350.360	252.00	-0.67	0.67	-0.19	1749451.02	14567152.13	40°06'37.224"N	104°36'36.124"W	0.34	
315.00	0.400	349.220	315.00	-0.99	0.98	-0.25	1749450.96	14567152.44	40°06'37.227"N	104°36'36.125"W	0.35	
347.00	0.260	350.540	347.00	-1.17	1.16	-0.28	1749450.92	14567152.62	40°06'37.229"N	104°36'36.126"W	0.44	
379.00	0.970	47.050	379.00	-1.42	1.42	-0.09	1749451.11	14567152.88	40°06'37.231"N	104°36'36.123"W	2.67	
411.00	1.410	56.370	410.99	-1.82	1.82	0.43	1749451.63	14567153.29	40°06'37.235"N	104°36'36.116"W	1.50	
442.00	1.580	64.630	441.98	-2.20	2.22	1.14	1749452.33	14567153.68	40°06'37.239"N	104°36'36.107"W	0.88	
474.00	2.290	68.060	473.96	-2.61	2.65	2.13	1749453.32	14567154.12	40°06'37.243"N	104°36'36.095"W	2.25	
505.00	2.590	71.140	504.93	-3.05	3.10	3.36	1749454.56	14567154.58	40°06'37.248"N	104°36'36.079"W	1.06	
537.00	2.590	75.090	536.90	-3.45	3.52	4.75	1749455.94	14567155.00	40°06'37.252"N	104°36'36.061"W	0.56	
569.00	3.160	73.680	568.86	-3.85	3.96	6.29	1749457.48	14567155.45	40°06'37.256"N	104°36'36.041"W	1.79	
632.00	3.690	74.560	631.75	-4.82	4.98	9.91	1749461.10	14567156.49	40°06'37.266"N	104°36'35.994"W	0.85	
664.00	4.130	78.520	663.67	-5.29	5.49	12.03	1749463.21	14567157.00	40°06'37.271"N	104°36'35.967"W	1.61	
696.00	4.390	79.570	695.58	-5.70	5.94	14.37	1749465.55	14567157.46	40°06'37.276"N	104°36'35.937"W	0.85	
728.00	4.700	83.970	727.48	-6.02	6.30	16.88	1749468.05	14567157.83	40°06'37.279"N	104°36'35.905"W	1.46	
759.00	5.320	82.910	758.36	-6.29	6.61	19.57	1749470.74	14567158.15	40°06'37.282"N	104°36'35.870"W	2.02	
791.00	5.930	79.480	790.21	-6.72	7.09	22.66	1749473.83	14567158.65	40°06'37.287"N	104°36'35.830"W	2.18	
823.00	6.770	81.950	822.01	-7.23	7.66	26.16	1749477.32	14567159.23	40°06'37.293"N	104°36'35.785"W	2.76	
854.00	6.940	79.480	852.79	-7.77	8.26	29.81	1749480.97	14567159.85	40°06'37.299"N	104°36'35.738"W	1.10	
886.00	7.290	80.800	884.54	-8.38	8.94	33.71	1749484.87	14567160.54	40°06'37.305"N	104°36'35.688"W	1.21	
918.00	7.600	79.920	916.28	-9.01	9.63	37.80	1749488.95	14567161.25	40°06'37.312"N	104°36'35.636"W	1.03	
949.00	8.570	81.070	946.97	-9.66	10.35	42.10	1749493.25	14567161.99	40°06'37.319"N	104°36'35.580"W	3.17	
980.00	9.320	82.210	977.59	-10.28	11.05	46.87	1749498.01	14567162.71	40°06'37.326"N	104°36'35.519"W	2.49	
1012.00	10.020	80.540	1009.13	-11.00	11.86	52.18	1749503.32	14567163.54	40°06'37.334"N	104°36'35.450"W	2.36	
1044.00	10.330	79.480	1040.63	-11.89	12.84	57.75	1749508.88	14567164.55	40°06'37.344"N	104°36'35.379"W	1.13	
1076.00	10.590	79.480	1072.10	-12.86	13.90	63.46	1749514.58	14567165.63	40°06'37.354"N	104°36'35.305"W	0.81	
1108.00	11.560	79.840	1103.50	-13.86	15.00	69.51	1749520.62	14567166.76	40°06'37.365"N	104°36'35.227"W	3.04	
1139.00	12.790	80.280	1133.81	-14.88	16.13	75.95	1749527.06	14567167.92	40°06'37.376"N	104°36'35.145"W	3.98	
1171.00	13.180	81.240	1164.99	-15.92	17.28	83.04	1749534.14	14567169.10	40°06'37.388"N	104°36'35.053"W	1.39	
1203.00	13.540	79.660	1196.12	-17.03	18.51	90.34	1749541.43	14567170.36	40°06'37.400"N	104°36'34.959"W	1.60	
1234.00	13.970	79.400	1226.23	-18.25	19.85	97.58	1749548.67	14567171.73	40°06'37.413"N	104°36'34.866"W	1.40	
1266.00	14.370	80.190	1257.26	-19.51	21.24	105.29	1749556.37	14567173.15	40°06'37.427"N	104°36'34.767"W	1.39	
1298.00	14.990	79.130	1288.21	-20.84	22.69	113.27	1749564.33	14567174.64	40°06'37.441"N	104°36'34.664"W	2.11	
1329.00	15.420	78.960	1318.13	-22.25	24.24	121.25	1749572.31	14567176.22	40°06'37.457"N	104°36'34.561"W	1.39	
1361.00	16.220	78.960	1348.92	-23.78	25.91	129.81	1749580.86	14567177.93	40°06'37.473"N	104°36'34.451"W	2.50	
1392.00	16.520	80.280	1378.66	-25.22	27.48	138.41	1749589.44	14567179.54	40°06'37.489"N	104°36'34.341"W	1.54	
1424.00	16.790	79.220	1409.32	-26.70	29.11	147.43	1749598.45	14567181.21	40°06'37.505"N	104°36'34.224"W	1.27	
1455.00	17.010	78.870	1438.98	-28.27	30.83	156.28	1749607.29	14567182.96	40°06'37.522"N	104°36'34.111"W	0.78	
1487.00	17.580	79.570	1469.53	-29.89	32.61	165.63	1749616.63	14567184.78	40°06'37.539"N	104°36'33.990"W	1.90	
1519.00	18.060	80.010	1500.00	-31.47	34.34	175.26	1749626.25	14567186.56	40°06'37.556"N	104°36'33.866"W	1.56	

REFERENCE WELLPATH IDENTIFICATION			
Operator	KERR-MCGEE OIL & GAS ONSHORE LP (WA)	Slot	SLOT#22 GEORGE 25-6HZ(2325'FNL & 2045'FEL,SEC.25)
Area	COLORADO	Well	GEORGE 25-6HZ
Field	WELD COUNTY (UTM/TRUE NORTH)	Wellbore	GEORGE 25-6HZ AWB
Facility	SEC.25-T2N-R65W		

WELLPATH DATA (222 stations) † = interpolated/extrapolated station												
MD [ft]	Inclination [°]	Azimuth [°]	TVD [ft]	Vert Sect [ft]	North [ft]	East [ft]	Grid East [US ft]	Grid North [US ft]	Latitude	Longitude	DLS [°/100ft]	Comments
1550.00	18.540	80.450	1529.43	-32.96	35.99	184.86	1749635.83	14567188.25	40°06'37.573"N	104°36'33.743"W	1.61	
1582.00	19.470	80.010	1559.68	-34.57	37.76	195.13	1749646.09	14567190.06	40°06'37.590"N	104°36'33.611"W	2.94	
1614.00	19.950	80.720	1589.81	-36.20	39.57	205.77	1749656.72	14567191.92	40°06'37.608"N	104°36'33.474"W	1.68	
1646.00	20.750	80.010	1619.81	-37.88	41.43	216.74	1749667.68	14567193.83	40°06'37.626"N	104°36'33.333"W	2.62	
1677.00	21.140	79.130	1648.76	-39.71	43.44	227.63	1749678.56	14567195.88	40°06'37.646"N	104°36'33.192"W	1.62	
1709.00	21.750	79.480	1678.55	-41.69	45.61	239.13	1749690.04	14567198.10	40°06'37.668"N	104°36'33.044"W	1.95	
1740.00	21.090	80.360	1707.41	-43.49	47.59	250.28	1749701.18	14567200.13	40°06'37.687"N	104°36'32.901"W	2.37	
1772.00	21.450	79.920	1737.23	-45.29	49.58	261.71	1749712.60	14567202.17	40°06'37.707"N	104°36'32.754"W	1.23	
1804.00	21.580	80.010	1767.00	-47.15	51.62	273.27	1749724.14	14567204.26	40°06'37.727"N	104°36'32.605"W	0.42	
1836.00	20.790	80.280	1796.83	-48.94	53.60	284.66	1749735.52	14567206.29	40°06'37.747"N	104°36'32.458"W	2.49	LAST SURFACE MWD+IFR1 SURVEY
1889.00	20.510	82.950	1846.43	-51.37	56.33	303.15	1749753.99	14567209.10	40°06'37.774"N	104°36'32.220"W	1.85	FIRST BHGE MWD+IFR1+MSA SURVEY
1977.00	19.900	82.430	1929.01	-54.74	60.20	333.29	1749784.11	14567213.10	40°06'37.812"N	104°36'31.832"W	0.72	
2064.00	21.730	78.170	2010.34	-59.49	65.45	363.74	1749814.52	14567218.48	40°06'37.864"N	104°36'31.441"W	2.73	
2152.00	21.230	78.660	2092.22	-65.45	71.92	395.31	1749846.04	14567225.09	40°06'37.928"N	104°36'31.034"W	0.60	
2239.00	20.410	78.240	2173.54	-71.14	78.11	425.60	1749876.30	14567231.41	40°06'37.989"N	104°36'30.644"W	0.96	
2326.00	21.410	76.190	2254.81	-77.53	84.99	455.88	1749906.53	14567238.42	40°06'38.057"N	104°36'30.255"W	1.42	
2414.00	20.790	75.770	2336.91	-84.70	92.67	486.61	1749937.22	14567246.23	40°06'38.133"N	104°36'29.859"W	0.73	
2501.00	21.740	73.410	2417.99	-92.60	101.06	517.02	1749967.58	14567254.75	40°06'38.216"N	104°36'29.468"W	1.47	
2589.00	21.080	73.310	2499.92	-101.29	110.26	547.80	1749998.31	14567264.08	40°06'38.307"N	104°36'29.072"W	0.75	
2676.00	21.650	74.430	2580.94	-109.59	119.06	578.25	1750028.70	14567273.01	40°06'38.394"N	104°36'28.680"W	0.81	
2764.00	20.490	75.290	2663.05	-117.36	127.33	608.78	1750059.19	14567281.41	40°06'38.475"N	104°36'28.287"W	1.36	
2852.00	21.080	71.880	2745.33	-125.70	136.16	638.72	1750089.08	14567290.37	40°06'38.563"N	104°36'27.901"W	1.53	
2939.00	21.770	70.660	2826.32	-135.42	146.37	668.81	1750119.11	14567300.71	40°06'38.663"N	104°36'27.514"W	0.94	
3026.00	21.200	70.640	2907.27	-145.48	156.93	698.88	1750149.12	14567311.39	40°06'38.768"N	104°36'27.127"W	0.66	
3114.00	22.300	68.200	2989.01	-156.46	168.41	729.39	1750179.57	14567323.00	40°06'38.881"N	104°36'26.734"W	1.62	
3201.00	21.330	68.620	3069.78	-167.86	180.31	759.45	1750209.57	14567335.02	40°06'38.999"N	104°36'26.347"W	1.13	
3289.00	22.660	71.350	3151.37	-178.61	191.56	790.42	1750240.47	14567346.41	40°06'39.110"N	104°36'25.949"W	1.91	
3377.00	21.300	70.810	3232.97	-188.77	202.24	821.58	1750271.57	14567357.22	40°06'39.215"N	104°36'25.548"W	1.56	
3464.00	20.870	74.280	3314.15	-197.68	211.63	851.42	1750301.36	14567366.74	40°06'39.308"N	104°36'25.164"W	1.52	
3577.00	21.940	74.570	3419.36	-208.10	222.70	891.15	1750341.02	14567377.98	40°06'39.418"N	104°36'24.653"W	0.95	
3665.00	19.570	74.780	3501.64	-215.85	230.94	921.22	1750371.05	14567386.35	40°06'39.499"N	104°36'24.265"W	2.69	
3753.00	19.550	77.030	3584.56	-222.55	238.12	949.79	1750399.58	14567393.65	40°06'39.570"N	104°36'23.898"W	0.86	
3841.00	19.920	75.000	3667.39	-229.27	245.30	978.62	1750428.36	14567400.96	40°06'39.641"N	104°36'23.527"W	0.89	
3928.00	20.620	73.030	3749.01	-237.10	253.61	1007.59	1750457.28	14567409.39	40°06'39.723"N	104°36'23.154"W	1.12	
4016.00	20.460	73.800	3831.41	-245.43	262.42	1037.18	1750486.82	14567418.33	40°06'39.810"N	104°36'22.773"W	0.36	
4104.00	22.280	72.470	3913.36	-254.24	271.74	1067.86	1750517.45	14567427.78	40°06'39.902"N	104°36'22.378"W	2.14	
4191.00	23.090	74.120	3993.63	-263.35	281.38	1099.99	1750549.53	14567437.55	40°06'39.997"N	104°36'21.965"W	1.18	
4279.00	22.780	74.000	4074.67	-272.23	290.79	1132.97	1750582.45	14567447.11	40°06'40.090"N	104°36'21.540"W	0.36	
4366.00	22.280	73.450	4155.03	-281.04	300.13	1164.97	1750614.40	14567456.58	40°06'40.183"N	104°36'21.128"W	0.62	
4374.00†	22.150	73.271	4162.44	-281.86	301.00	1167.86	1750617.29	14567457.46	40°06'40.191"N	104°36'21.091"W	1.83	ENTER LANDBOX (2025'FNL & 877'FEL,SEC.25) 40.1111642 -104.6058586
4454.00	20.860	71.370	4236.87	-290.30	309.89	1195.81	1750645.18	14567466.47	40°06'40.279"N	104°36'20.731"W	1.83	
4541.00	19.500	70.240	4318.53	-299.69	319.75	1224.15	1750673.47	14567476.45	40°06'40.377"N	104°36'20.367"W	1.63	
4629.00	18.400	70.870	4401.76	-308.76	329.27	1251.10	1750700.36	14567486.08	40°06'40.471"N	104°36'20.020"W	1.27	
4716.00	16.380	68.530	4484.78	-317.35	338.26	1275.49	1750724.71	14567495.18	40°06'40.559"N	104°36'19.706"W	2.46	
4892.00	13.850	67.050	4654.67	-333.96	355.56	1317.99	1750767.11	14567512.66	40°06'40.730"N	104°36'19.159"W	1.45	

REFERENCE WELLPATH IDENTIFICATION			
Operator	KERR-MCGEE OIL & GAS ONSHORE LP (WA)	Slot	SLOT#22 GEORGE 25-6HZ(2325'FNL & 2045'FEL,SEC.25)
Area	COLORADO	Well	GEORGE 25-6HZ
Field	WELD COUNTY (UTM/TRUE NORTH)	Wellbore	GEORGE 25-6HZ AWB
Facility	SEC.25-T2N-R65W		

WELLPATH DATA (222 stations) † = interpolated/extrapolated station												
MD [ft]	Inclination [°]	Azimuth [°]	TVD [ft]	Vert Sect [ft]	North [ft]	East [ft]	Grid East [US ft]	Grid North [US ft]	Latitude	Longitude	DLS °/100ft	Comments
4979.00	11.980	62.350	4739.47	-341.92	363.81	1335.58	1750784.66	14567520.98	40°06'40.812"N	104°36'18.932"W	2.46	
5067.00	9.890	60.850	4825.87	-349.60	371.73	1350.27	1750799.31	14567528.96	40°06'40.890"N	104°36'18.743"W	2.40	
5155.00	7.340	64.850	4912.87	-355.48	377.80	1361.96	1750810.97	14567535.08	40°06'40.950"N	104°36'18.593"W	2.97	
5242.00	5.470	65.690	4999.32	-359.40	381.87	1370.77	1750819.76	14567539.19	40°06'40.990"N	104°36'18.479"W	2.15	
5330.00	2.870	83.390	5087.09	-361.29	383.85	1376.78	1750825.76	14567541.20	40°06'41.010"N	104°36'18.402"W	3.26	
5417.00	1.150	66.170	5174.03	-361.84	384.45	1379.74	1750828.72	14567541.81	40°06'41.016"N	104°36'18.364"W	2.07	
5505.00	0.210	171.890	5262.02	-362.02	384.65	1380.57	1750829.55	14567542.01	40°06'41.018"N	104°36'18.353"W	1.39	
5592.00	0.500	87.470	5349.02	-361.88	384.51	1380.98	1750829.95	14567541.87	40°06'41.016"N	104°36'18.348"W	0.60	
5679.00	0.700	56.690	5436.02	-362.17	384.82	1381.80	1750830.77	14567542.18	40°06'41.019"N	104°36'18.337"W	0.43	
5766.00	1.020	200.890	5523.01	-361.74	384.39	1381.97	1750830.94	14567541.75	40°06'41.015"N	104°36'18.335"W	1.88	
5854.00	0.650	176.930	5611.00	-360.51	383.16	1381.71	1750830.69	14567540.52	40°06'41.003"N	104°36'18.339"W	0.57	
5941.00	0.340	198.050	5698.00	-359.77	382.42	1381.66	1750830.64	14567539.79	40°06'40.996"N	104°36'18.339"W	0.41	
6029.00	0.650	117.490	5786.00	-359.29	381.94	1382.02	1750831.01	14567539.31	40°06'40.991"N	104°36'18.335"W	0.78	
6116.00	0.370	142.620	5872.99	-358.83	381.49	1382.63	1750831.62	14567538.86	40°06'40.987"N	104°36'18.327"W	0.40	
6204.00	1.450	323.980	5960.99	-359.51	382.16	1382.15	1750831.13	14567539.53	40°06'40.993"N	104°36'18.333"W	2.07	
6291.00	1.740	319.790	6047.95	-361.43	384.06	1380.65	1750829.62	14567541.42	40°06'41.012"N	104°36'18.352"W	0.36	
6379.00	1.920	316.160	6135.91	-363.55	386.15	1378.77	1750827.73	14567543.50	40°06'41.033"N	104°36'18.377"W	0.24	
6466.00	1.100	247.190	6222.88	-364.31	386.87	1376.99	1750825.95	14567544.22	40°06'41.040"N	104°36'18.399"W	2.11	
6554.00	1.100	295.770	6310.87	-364.37	386.91	1375.45	1750824.41	14567544.25	40°06'41.040"N	104°36'18.419"W	1.03	
6641.00	0.890	276.090	6397.86	-364.83	387.35	1374.02	1750822.99	14567544.68	40°06'41.044"N	104°36'18.438"W	0.46	
6646.00†	0.987	238.794	6402.86	-364.81	387.33	1373.95	1750822.91	14567544.66	40°06'41.044"N	104°36'18.439"W	12.14	KOP
6729.00	10.570	180.870	6485.36	-356.82	379.33	1373.22	1750822.22	14567536.66	40°06'40.965"N	104°36'18.448"W	12.14	
6816.00	17.050	177.570	6569.80	-336.07	358.58	1373.64	1750822.73	14567515.92	40°06'40.760"N	104°36'18.443"W	7.50	
6904.00	20.870	177.280	6653.01	-307.50	330.03	1374.93	1750824.14	14567487.38	40°06'40.478"N	104°36'18.426"W	4.34	
6991.00	26.690	170.030	6732.61	-272.68	295.27	1379.05	1750828.42	14567452.66	40°06'40.134"N	104°36'18.373"W	7.47	
7079.00	32.950	175.960	6808.93	-229.21	251.88	1384.17	1750833.72	14567409.31	40°06'39.706"N	104°36'18.307"W	7.86	
7166.00	37.430	180.080	6880.03	-179.12	201.80	1385.80	1750835.57	14567359.26	40°06'39.211"N	104°36'18.286"W	5.83	
7254.00	41.580	177.460	6947.91	-123.16	145.86	1387.05	1750837.07	14567303.34	40°06'38.658"N	104°36'18.270"W	5.08	
7341.00	49.560	174.250	7008.78	-61.20	83.97	1391.66	1750841.95	14567241.50	40°06'38.046"N	104°36'18.211"W	9.54	
7428.00	57.130	176.300	7060.68	8.39	14.46	1397.34	1750847.93	14567172.05	40°06'37.360"N	104°36'18.138"W	8.90	
7516.00	62.360	179.160	7105.01	84.34	-61.45	1400.30	1750851.22	14567096.17	40°06'36.609"N	104°36'18.100"W	6.57	
7603.00	71.020	181.410	7139.41	164.14	-141.27	1399.85	1750851.12	14567016.39	40°06'35.821"N	104°36'18.105"W	10.23	
7690.00	76.180	182.300	7163.96	247.47	-224.66	1397.14	1750848.78	14566933.02	40°06'34.997"N	104°36'18.140"W	6.01	
7778.00	87.020	178.960	7176.80	334.35	-311.56	1396.22	1750848.24	14566846.14	40°06'34.138"N	104°36'18.152"W	12.88	LANDING (2637'FNL & 649'FEL,SEC.25) 40.1094827 -104.6050423
7866.00	91.200	177.920	7178.17	422.32	-399.50	1398.62	1750851.02	14566758.25	40°06'33.269"N	104°36'18.122"W	4.89	
7953.00	91.200	178.090	7176.35	509.28	-486.43	1401.65	1750854.43	14566671.37	40°06'32.410"N	104°36'18.083"W	0.20	
8040.00	91.110	177.350	7174.59	596.24	-573.34	1405.11	1750858.27	14566584.51	40°06'31.551"N	104°36'18.038"W	0.86	
8128.00	90.590	176.730	7173.29	684.18	-661.21	1409.65	1750863.20	14566496.69	40°06'30.682"N	104°36'17.980"W	0.92	
8215.00	91.320	176.900	7171.84	771.10	-748.07	1414.48	1750868.41	14566409.89	40°06'29.824"N	104°36'17.918"W	0.86	
8257.00†	91.630	176.442	7170.76	813.05	-789.98	1416.92	1750871.03	14566368.01	40°06'29.410"N	104°36'17.886"W	1.32	CROSS SETBACK HEEL (3115'FNL & 628'FEL,SEC.25) 40.1081694 -104.6049684
8303.00	91.970	175.940	7169.31	858.97	-835.86	1419.98	1750874.28	14566322.16	40°06'28.957"N	104°36'17.847"W	1.32	
8390.00	90.000	177.720	7167.82	945.88	-922.70	1424.79	1750879.47	14566235.37	40°06'28.098"N	104°36'17.785"W	3.05	
8477.00	88.620	175.870	7168.86	1032.80	-1009.55	1429.65	1750884.71	14566148.58	40°06'27.240"N	104°36'17.723"W	2.65	
8565.00	88.340	177.530	7171.20	1120.69	-1097.37	1434.71	1750890.16	14566060.81	40°06'26.372"N	104°36'17.658"W	1.91	
8653.00	89.880	178.500	7172.57	1208.66	-1185.31	1437.76	1750893.59	14565972.93	40°06'25.503"N	104°36'17.618"W	2.07	

REFERENCE WELLPATH IDENTIFICATION			
Operator	KERR-MCGEE OIL & GAS ONSHORE LP (WA)	Slot	SLOT#22 GEORGE 25-6HZ(2325'FNL & 2045'FEL,SEC.25)
Area	COLORADO	Well	GEORGE 25-6HZ
Field	WELD COUNTY (UTM/TRUE NORTH)	Wellbore	GEORGE 25-6HZ AWB
Facility	SEC.25-T2N-R65W		

WELLPATH DATA (222 stations)												
MD [ft]	Inclination [°]	Azimuth [°]	TVD [ft]	Vert Sect [ft]	North [ft]	East [ft]	Grid East [US ft]	Grid North [US ft]	Latitude	Longitude	DLS [°/100ft]	Comments
8740.00	90.030	177.920	7172.63	1295.65	-1272.26	1440.48	1750896.69	14565886.02	40°06'24.644"N	104°36'17.583"W	0.69	
8828.00	89.880	177.910	7172.70	1383.63	-1360.21	1443.68	1750900.28	14565798.12	40°06'23.775"N	104°36'17.542"W	0.17	
8915.00	90.060	177.970	7172.75	1470.62	-1447.15	1446.81	1750903.78	14565711.23	40°06'22.916"N	104°36'17.502"W	0.22	
9002.00	90.060	177.640	7172.66	1557.60	-1534.09	1450.14	1750907.49	14565624.34	40°06'22.057"N	104°36'17.459"W	0.38	
9090.00	89.910	177.130	7172.68	1645.56	-1621.99	1454.15	1750911.89	14565536.49	40°06'21.188"N	104°36'17.408"W	0.60	
9178.00	89.940	176.820	7172.80	1733.50	-1709.87	1458.80	1750916.92	14565448.67	40°06'20.319"N	104°36'17.348"W	0.35	
9265.00	91.790	176.290	7171.48	1820.40	-1796.70	1464.02	1750922.53	14565361.89	40°06'19.461"N	104°36'17.281"W	2.21	
9352.00	90.680	177.570	7169.61	1907.32	-1883.55	1468.68	1750927.56	14565275.10	40°06'18.603"N	104°36'17.221"W	1.95	
9440.00	89.690	176.660	7169.32	1995.26	-1971.44	1473.11	1750932.38	14565187.27	40°06'17.735"N	104°36'17.164"W	1.53	
9531.00	89.040	177.420	7170.33	2086.20	-2062.31	1477.81	1750937.47	14565096.45	40°06'16.837"N	104°36'17.104"W	1.10	
9621.00	88.640	176.820	7172.15	2176.13	-2152.18	1482.33	1750942.38	14565006.64	40°06'15.948"N	104°36'17.045"W	0.80	
9712.00	89.320	177.000	7173.77	2267.05	-2243.03	1487.24	1750947.68	14564915.84	40°06'15.051"N	104°36'16.982"W	0.77	
9803.00	88.950	178.420	7175.15	2358.01	-2333.94	1490.87	1750951.72	14564824.98	40°06'14.152"N	104°36'16.936"W	1.61	
9895.00	90.180	177.870	7175.85	2450.00	-2425.89	1493.85	1750955.10	14564733.08	40°06'13.244"N	104°36'16.897"W	1.46	
9984.00	89.750	177.950	7175.90	2538.98	-2514.83	1497.10	1750958.73	14564644.19	40°06'12.365"N	104°36'16.856"W	0.49	
10071.00	90.740	178.720	7175.53	2625.97	-2601.79	1499.62	1750961.64	14564557.28	40°06'11.505"N	104°36'16.823"W	1.44	
10159.00	90.800	178.570	7174.35	2713.96	-2689.76	1501.70	1750964.10	14564469.35	40°06'10.636"N	104°36'16.797"W	0.18	
10245.00	90.400	178.490	7173.45	2799.95	-2775.73	1503.91	1750966.69	14564383.43	40°06'09.786"N	104°36'16.768"W	0.47	
10333.00	90.310	178.080	7172.90	2887.94	-2863.69	1506.54	1750969.70	14564295.52	40°06'08.917"N	104°36'16.734"W	0.48	
10420.00	89.850	177.630	7172.78	2974.92	-2950.62	1509.80	1750973.34	14564208.63	40°06'08.058"N	104°36'16.693"W	0.74	
10508.00	90.520	178.240	7172.49	3062.90	-3038.57	1512.97	1750976.90	14564120.74	40°06'07.189"N	104°36'16.652"W	1.03	
10595.00	89.600	178.150	7172.40	3149.89	-3125.52	1515.71	1750980.02	14564033.83	40°06'06.330"N	104°36'16.617"W	1.06	
10683.00	91.290	179.150	7171.72	3237.88	-3213.49	1517.78	1750982.47	14563945.90	40°06'05.460"N	104°36'16.590"W	2.23	
10771.00	91.080	179.030	7169.90	3325.86	-3301.46	1519.18	1750984.26	14563857.97	40°06'04.591"N	104°36'16.572"W	0.27	
10859.00	90.490	178.190	7168.69	3413.85	-3389.42	1521.32	1750986.78	14563770.05	40°06'03.722"N	104°36'16.545"W	1.17	
10946.00	90.370	178.550	7168.04	3500.84	-3476.39	1523.79	1750989.63	14563683.14	40°06'02.862"N	104°36'16.513"W	0.44	
11034.00	91.200	180.540	7166.84	3588.82	-3564.37	1524.49	1750990.71	14563595.19	40°06'01.993"N	104°36'16.504"W	2.45	
11121.00	91.170	181.070	7165.04	3675.77	-3651.34	1523.27	1750989.87	14563508.25	40°06'01.133"N	104°36'16.520"W	0.61	
11209.00	91.350	181.370	7163.10	3763.68	-3739.30	1521.39	1750988.39	14563420.32	40°06'00.264"N	104°36'16.544"W	0.40	
11296.00	91.390	180.800	7161.02	3850.60	-3826.26	1519.75	1750987.12	14563333.38	40°05'59.405"N	104°36'16.565"W	0.66	
11384.00	89.970	181.140	7159.98	3938.54	-3914.24	1518.26	1750986.02	14563245.43	40°05'58.535"N	104°36'16.585"W	1.66	
11471.00	90.120	181.970	7159.91	4025.46	-4001.21	1515.90	1750984.04	14563158.49	40°05'57.676"N	104°36'16.615"W	0.97	
11559.00	90.310	182.140	7159.58	4113.34	-4089.15	1512.74	1750981.27	14563070.57	40°05'56.807"N	104°36'16.656"W	0.29	
11647.00	90.400	180.510	7159.03	4201.27	-4177.12	1510.71	1750979.62	14562982.62	40°05'55.938"N	104°36'16.682"W	1.86	
11734.00	89.880	181.300	7158.82	4288.22	-4264.11	1509.33	1750978.63	14562895.67	40°05'55.078"N	104°36'16.700"W	1.09	
11821.00	90.740	178.710	7158.35	4375.20	-4351.10	1509.32	1750979.00	14562808.71	40°05'54.218"N	104°36'16.700"W	3.14	
11909.00	90.490	178.660	7157.41	4463.19	-4439.07	1511.34	1750981.41	14562720.78	40°05'53.349"N	104°36'16.674"W	0.29	
11996.00	89.750	178.340	7157.22	4550.19	-4526.04	1513.62	1750984.07	14562633.86	40°05'52.490"N	104°36'16.645"W	0.93	
12084.00	89.140	177.520	7158.08	4638.17	-4613.98	1516.80	1750987.63	14562545.97	40°05'51.621"N	104°36'16.604"W	1.16	
12171.00	90.150	178.350	7158.61	4725.15	-4700.92	1519.93	1750991.14	14562459.08	40°05'50.761"N	104°36'16.564"W	1.50	
12259.00	89.940	178.260	7158.55	4813.14	-4788.88	1522.54	1750994.13	14562371.16	40°05'49.892"N	104°36'16.530"W	0.26	
12346.00	90.120	179.590	7158.50	4900.14	-4875.86	1524.17	1750996.14	14562284.22	40°05'49.033"N	104°36'16.509"W	1.54	
12433.00	89.780	178.940	7158.58	4987.13	-4962.85	1525.29	1750997.64	14562197.27	40°05'48.173"N	104°36'16.495"W	0.84	
12521.00	89.750	180.950	7158.94	5075.12	-5050.85	1525.37	1750998.11	14562109.31	40°05'47.303"N	104°36'16.494"W	2.28	
12609.00	92.030	180.670	7157.57	5163.06	-5138.82	1524.13	1750997.25	14562021.36	40°05'46.434"N	104°36'16.510"W	2.61	

REFERENCE WELLPATH IDENTIFICATION			
Operator	KERR-MCGEE OIL & GAS ONSHORE LP (WA)	Slot	SLOT#22 GEORGE 25-6HZ(2325'FNL & 2045'FEL,SEC.25)
Area	COLORADO	Well	GEORGE 25-6HZ
Field	WELD COUNTY (UTM/TRUE NORTH)	Wellbore	GEORGE 25-6HZ AWB
Facility	SEC.25-T2N-R65W		

WELLPATH DATA (222 stations) † = interpolated/extrapolated station												
MD [ft]	Inclination [°]	Azimuth [°]	TVD [ft]	Vert Sect [ft]	North [ft]	East [ft]	Grid East [US ft]	Grid North [US ft]	Latitude	Longitude	DLS °/100ft	Comments
12696.00	91.790	180.270	7154.67	5249.99	-5225.77	1523.41	1750996.92	14561934.45	40°05'45.575"N	104°36'16.519"W	0.54	
12784.00	92.030	179.410	7151.74	5337.93	-5313.72	1523.66	1750997.55	14561846.53	40°05'44.706"N	104°36'16.516"W	1.01	
12871.00	90.920	177.880	7149.50	5424.89	-5400.67	1525.72	1750999.99	14561759.63	40°05'43.846"N	104°36'16.490"W	2.17	
12959.00	90.250	179.460	7148.60	5512.88	-5488.63	1527.76	1751002.42	14561671.71	40°05'42.977"N	104°36'16.463"W	1.95	
13047.00	90.000	179.010	7148.41	5600.88	-5576.63	1528.93	1751003.98	14561583.76	40°05'42.108"N	104°36'16.448"W	0.58	
13134.00	89.690	178.680	7148.64	5687.88	-5663.61	1530.69	1751006.11	14561496.82	40°05'41.248"N	104°36'16.426"W	0.52	
13221.00	89.410	178.390	7149.33	5774.87	-5750.58	1532.91	1751008.72	14561409.89	40°05'40.389"N	104°36'16.397"W	0.46	
13309.00	89.290	177.850	7150.32	5862.86	-5838.52	1535.80	1751011.99	14561321.99	40°05'39.519"N	104°36'16.360"W	0.63	
13396.00	89.350	178.080	7151.36	5949.83	-5925.46	1538.89	1751015.46	14561235.10	40°05'38.660"N	104°36'16.321"W	0.27	
13483.00	89.720	179.670	7152.06	6036.83	-6012.44	1540.59	1751017.54	14561148.17	40°05'37.801"N	104°36'16.299"W	1.88	
13571.00	88.710	180.530	7153.27	6124.80	-6100.43	1540.44	1751017.78	14561060.21	40°05'36.931"N	104°36'16.301"W	1.51	
13658.00	87.840	180.170	7155.89	6211.74	-6187.39	1539.91	1751017.63	14560973.29	40°05'36.072"N	104°36'16.308"W	1.08	
13745.00	88.180	181.680	7158.91	6298.64	-6274.32	1538.51	1751016.60	14560886.38	40°05'35.213"N	104°36'16.326"W	1.78	
13833.00	90.150	181.660	7160.19	6386.54	-6362.27	1535.94	1751014.43	14560798.46	40°05'34.344"N	104°36'16.359"W	2.24	
13921.00	90.550	181.000	7159.65	6474.46	-6450.24	1533.90	1751012.77	14560710.51	40°05'33.474"N	104°36'16.385"W	0.88	
14008.00	91.910	181.010	7157.79	6561.39	-6537.21	1532.37	1751011.63	14560623.57	40°05'32.615"N	104°36'16.405"W	1.56	
14095.00	89.260	179.690	7156.90	6648.36	-6624.19	1531.84	1751011.48	14560536.62	40°05'31.755"N	104°36'16.412"W	3.40	
14183.00	89.350	179.020	7157.96	6736.35	-6712.18	1532.83	1751012.85	14560448.67	40°05'30.886"N	104°36'16.399"W	0.77	
14270.00	90.370	179.100	7158.18	6823.35	-6799.17	1534.26	1751014.66	14560361.73	40°05'30.026"N	104°36'16.381"W	1.18	
14357.00	90.740	179.270	7157.33	6910.34	-6886.15	1535.50	1751016.28	14560274.78	40°05'29.167"N	104°36'16.365"W	0.47	
14445.00	88.580	179.330	7157.86	6998.33	-6974.14	1536.57	1751017.74	14560186.83	40°05'28.297"N	104°36'16.351"W	2.46	
14532.00	88.370	179.260	7160.17	7085.30	-7061.10	1537.64	1751019.19	14560099.91	40°05'27.438"N	104°36'16.337"W	0.25	
14620.00	88.310	178.900	7162.72	7173.27	-7149.05	1539.06	1751020.99	14560012.00	40°05'26.569"N	104°36'16.319"W	0.41	
14707.00	89.880	179.890	7164.10	7260.25	-7236.03	1539.97	1751022.29	14559925.06	40°05'25.709"N	104°36'16.308"W	2.13	
14795.00	89.630	179.810	7164.47	7348.24	-7324.03	1540.20	1751022.90	14559837.09	40°05'24.839"N	104°36'16.305"W	0.30	
14882.00	90.180	181.000	7164.62	7435.21	-7411.03	1539.59	1751022.67	14559750.13	40°05'23.980"N	104°36'16.313"W	1.51	
14970.00	91.360	180.610	7163.43	7523.16	-7499.01	1538.35	1751021.82	14559662.18	40°05'23.110"N	104°36'16.329"W	1.41	
15057.00	91.230	180.240	7161.47	7610.12	-7585.99	1537.71	1751021.56	14559575.24	40°05'22.251"N	104°36'16.337"W	0.45	
15145.00	91.200	179.770	7159.60	7698.09	-7673.97	1537.70	1751021.93	14559487.29	40°05'21.381"N	104°36'16.337"W	0.54	
15233.00	91.290	179.860	7157.69	7786.06	-7761.94	1537.98	1751022.60	14559399.35	40°05'20.512"N	104°36'16.334"W	0.14	
15320.00	91.290	179.730	7155.73	7873.03	-7848.92	1538.29	1751023.30	14559312.41	40°05'19.652"N	104°36'16.330"W	0.15	
15357.00†	91.252	179.650	7154.91	7910.02	-7885.91	1538.50	1751023.66	14559275.43	40°05'19.287"N	104°36'16.327"W	0.24	CROSS SETBACK TOE (461'FSL & 521'FEL,SEC.36) 40.0886908 -104.6045353
15408.00	91.200	179.540	7153.82	7961.00	-7936.90	1538.86	1751024.24	14559224.47	40°05'18.783"N	104°36'16.323"W	0.24	
15496.00	90.520	181.040	7152.50	8048.97	-8024.89	1538.41	1751024.18	14559136.51	40°05'17.913"N	104°36'16.328"W	1.87	
15583.00	90.710	180.860	7151.56	8135.92	-8111.87	1536.97	1751023.12	14559049.56	40°05'17.054"N	104°36'16.347"W	0.30	
15671.00	89.320	179.700	7151.54	8223.89	-8199.86	1536.54	1751023.08	14558961.60	40°05'16.184"N	104°36'16.353"W	2.06	
15759.00	89.540	179.500	7152.42	8311.89	-8287.86	1537.15	1751024.08	14558873.64	40°05'15.315"N	104°36'16.345"W	0.34	
15847.00	89.380	179.250	7153.25	8399.88	-8375.85	1538.11	1751025.42	14558785.69	40°05'14.445"N	104°36'16.332"W	0.34	
15934.00	89.140	179.000	7154.37	8486.87	-8462.83	1539.44	1751027.13	14558698.75	40°05'13.586"N	104°36'16.315"W	0.40	
16022.00	88.920	178.640	7155.86	8574.86	-8550.80	1541.25	1751029.33	14558610.82	40°05'12.716"N	104°36'16.292"W	0.48	
16100.00	88.800	178.850	7157.41	8652.84	-8628.76	1542.96	1751031.38	14558532.90	40°05'11.946"N	104°36'16.270"W	0.31	LAST BHGE MWD+IFR1+MSA SURVEY
16146.00	88.800	178.850	7158.37	8698.83	-8674.74	1543.88	1751032.50	14558486.94	40°05'11.491"N	104°36'16.258"W	0.00	PTB (328'FNL & 515'FEL,SEC.01) 40.0865254 -104.6045162

REFERENCE WELLPATH IDENTIFICATION			
Operator	KERR-MCGEE OIL & GAS ONSHORE LP (WA)	Slot	SLOT#22 GEORGE 25-6HZ(2325'FNL & 2045'FEL,SEC.25)
Area	COLORADO	Well	GEORGE 25-6HZ
Field	WELD COUNTY (UTM/TRUE NORTH)	Wellbore	GEORGE 25-6HZ AWB
Facility	SEC.25-T2N-R65W		

HOLE & CASING SECTIONS - Ref Wellbore: GEORGE 25-6HZ AWB Ref Wellpath: GEORGE 25-6HZ AWP									
String/Diameter	Start MD [ft]	End MD [ft]	Interval [ft]	Start TVD [ft]	End TVD [ft]	Start N/S [ft]	Start E/W [ft]	End N/S [ft]	End E/W [ft]
9.625in Casing Surface	17.00	1875.00	1858.00	17.00	1833.32	0.00	0.00	55.70	298.28

TARGETS								
Name	TVD [ft]	North [ft]	East [ft]	Grid East [US ft]	Grid North [US ft]	Latitude	Longitude	Shape
SEC.36-T2N-R65W	0.00	71.34	-22.69	1749428.22	14567222.67	40°06'37.922"N	104°36'36.414"W	polygon
SEC.25-T2N-R65W	20.00	9989.30	-1348.15	1748059.81	14577130.87	40°08'15.932"N	104°36'53.480"W	polygon
GEORGE 25-6HZ BHL REV-1(332'FNL & 518'FEL,SEC.01)	7148.00	-8678.53	1541.43	1751030.07	14558483.14	40°05'11.454"N	104°36'16.290"W	point
GEORGE 25-6HZ LAT. TARGET	7165.52	-3481.19	1521.68	1750987.54	14563678.33	40°06'02.815"N	104°36'16.540"W	point
GEORGE 25-6HZ HEEL REV-1(2602'FSL & 643'FEL,SEC.25)	7176.00	-370.10	1405.54	1750857.81	14566787.67	40°06'33.559"N	104°36'18.032"W	point
GEORGE 25-6HZ LANDBOX	7176.00	0.00	0.00	1749451.21	14567151.46	40°06'37.217"N	104°36'36.122"W	polygon
GEORGE 25-6HZ SETBACK 1	7176.00	0.00	0.00	1749451.21	14567151.46	40°06'37.217"N	104°36'36.122"W	polygon
GEORGE 25-6HZ SETBACK 2	7176.00	0.00	0.00	1749451.21	14567151.46	40°06'37.217"N	104°36'36.122"W	polygon

WELLPATH COMPOSITION - Ref Wellbore: GEORGE 25-6HZ AWB Ref Wellpath: GEORGE 25-6HZ AWP				
Start MD [ft]	End MD [ft]	Positional Uncertainty Model	Log Name/Comment	Wellbore
17.00	1836.00	Custom APC ISCWSA REV 2 MWD+IFR1 (approximation)	Custom APC ISCWSA Rev-2 MWD+IFR1 <125 - 1836>	GEORGE 25-6HZ AWB
1836.00	16100.00	Custom APC ISCWSA REV 2 MWD+IFR1+MSA (approximation)	BHGE Custom APC ISCWSA Rev-2 MWD+IFR1+MSA <1889 - 16100>	GEORGE 25-6HZ AWB
16100.00	16146.00	Blind Drilling (std)	Projection to bit	GEORGE 25-6HZ AWB

REFERENCE WELLPATH IDENTIFICATION			
Operator	KERR-MCGEE OIL & GAS ONSHORE LP (WA)	Slot	SLOT#22 GEORGE 25-6HZ(2325'FNL & 2045'FEL,SEC.25)
Area	COLORADO	Well	GEORGE 25-6HZ
Field	WELD COUNTY (UTM/TRUE NORTH)	Wellbore	GEORGE 25-6HZ AWB
Facility	SEC.25-T2N-R65W		

WELLPATH COMMENTS				
MD [ft]	Inclination [°]	Azimuth [°]	TVD [ft]	Comment
125.00	0.310	350.800	125.00	FIRST SURFACE MWD+IFR1 SURVEY
1836.00	20.790	80.280	1796.83	LAST SURFACE MWD+IFR1 SURVEY
1889.00	20.510	82.950	1846.43	FIRST BHGE MWD+IFR1+MSA SURVEY
4374.00	22.150	73.271	4162.44	ENTER LANDBOX (2025'FNL & 877'FEL,SEC.25) 40.1111642 -104.6058586
6646.00	0.987	238.794	6402.86	KOP
7778.00	87.020	178.960	7176.80	LANDING (2637'FNL & 649'FEL,SEC.25) 40.1094827 -104.6050423
8257.00	91.630	176.442	7170.76	CROSS SETBACK HEEL (3115'FNL & 628'FEL,SEC.25) 40.1081694 -104.6049684
15357.00	91.252	179.650	7154.91	CROSS SETBACK TOE (461'FSL & 521'FEL,SEC.36) 40.0886908 -104.6045353
16100.00	88.800	178.850	7157.41	LAST BHGE MWD+IFR1+MSA SURVEY
16146.00	88.800	178.850	7158.37	PTB (328'FNL & 515'FEL,SEC.01) 40.0865254 -104.6045162