



Crestone Peak Resources

Well Name:

REGNIER FARMS 1K-19H-B268

Project Name:

Sec 19 T2N-R68W

Pad Name:

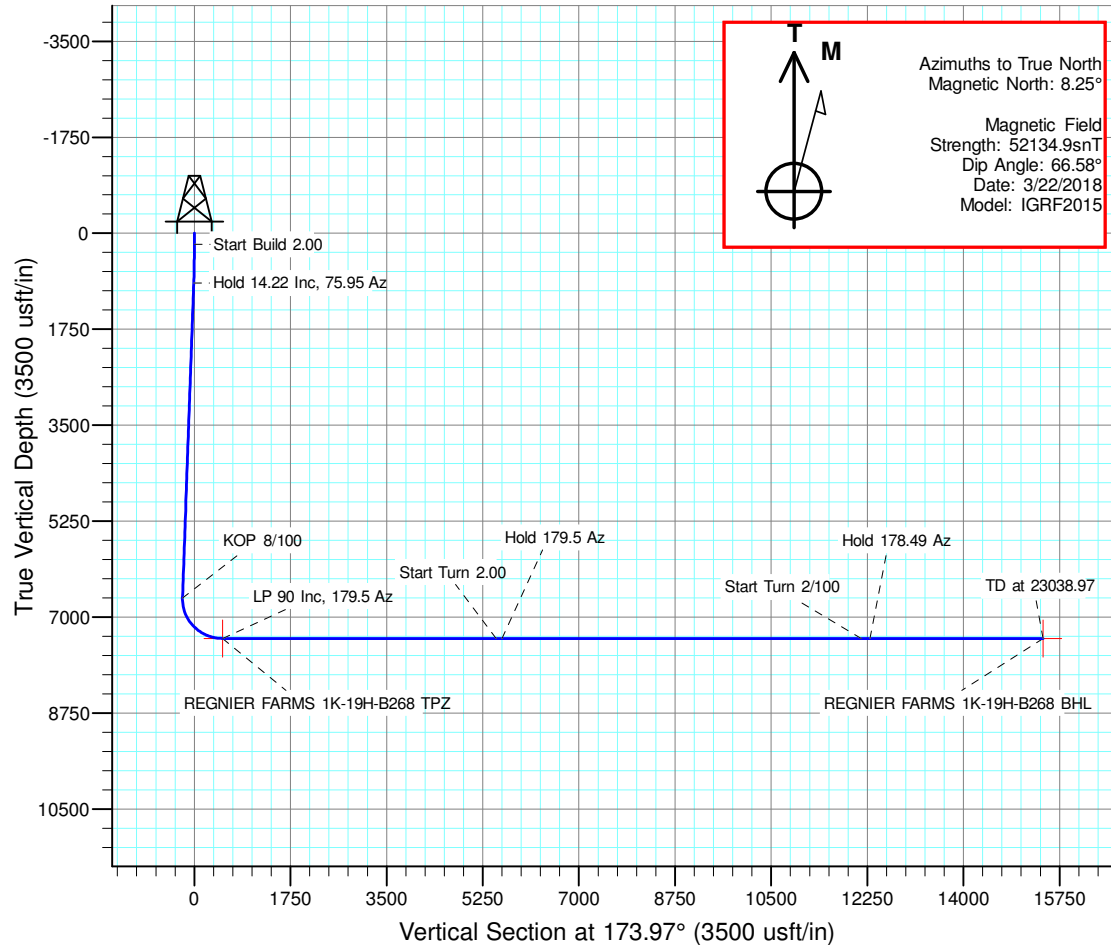
Regnier Farms Pad

ANNOTATIONS

MD	Inc	Azi	TVD	+N/-S	+E/-W	Vsect	Departure	Annotation
200.00	0.00	0.00	200.00	0.00	0.00	0.00	0.00	Start Build 2.00
911.24	14.22	75.95	903.95	21.33	85.21	-12.26	87.84	Hold 14.22 Inc, 75.95 Az
6842.71	14.22	75.95	6653.56	375.28	1499.09	-215.78	1545.35	KOP 8/100
8008.97	90.00	179.50	7389.00	-338.12	1686.56	513.37	2320.11	LP 90 Inc, 179.5 Az
13008.97	90.00	179.50	7389.00	-5337.93	1730.20	5490.11	7320.11	Start Turn 2.00
13116.47	90.00	181.65	7389.00	-5445.42	1729.12	5596.89	7427.61	Hold 179.5 Az
19716.47	90.00	181.65	7389.00	-12042.68	1539.08	12137.72	14027.61	Start Turn 2/100
19874.63	90.00	178.49	7389.00	-12200.82	1538.89	12294.96	14185.77	Hold 178.49 Az
23038.97	90.00	178.49	7389.00	-15364.05	1622.45	15449.48	17349.11	TD at 23038.97

DESIGN TARGET DETAILS

Name	TVD	+N/-S	+E/-W	Northing	Easting	Latitude	Longitude	Shape
REGNIER FARMS 1K-19H-B268 BHL	7389.00	-15364.05	1622.45	1275616.656	3129498.706	40.089031	-105.037152	Point
REGNIER FARMS 1K-19H-B268 TPZ	7389.00	-338.12	1686.56	1290642.721	3129485.376	40.130280	-105.036919	Point

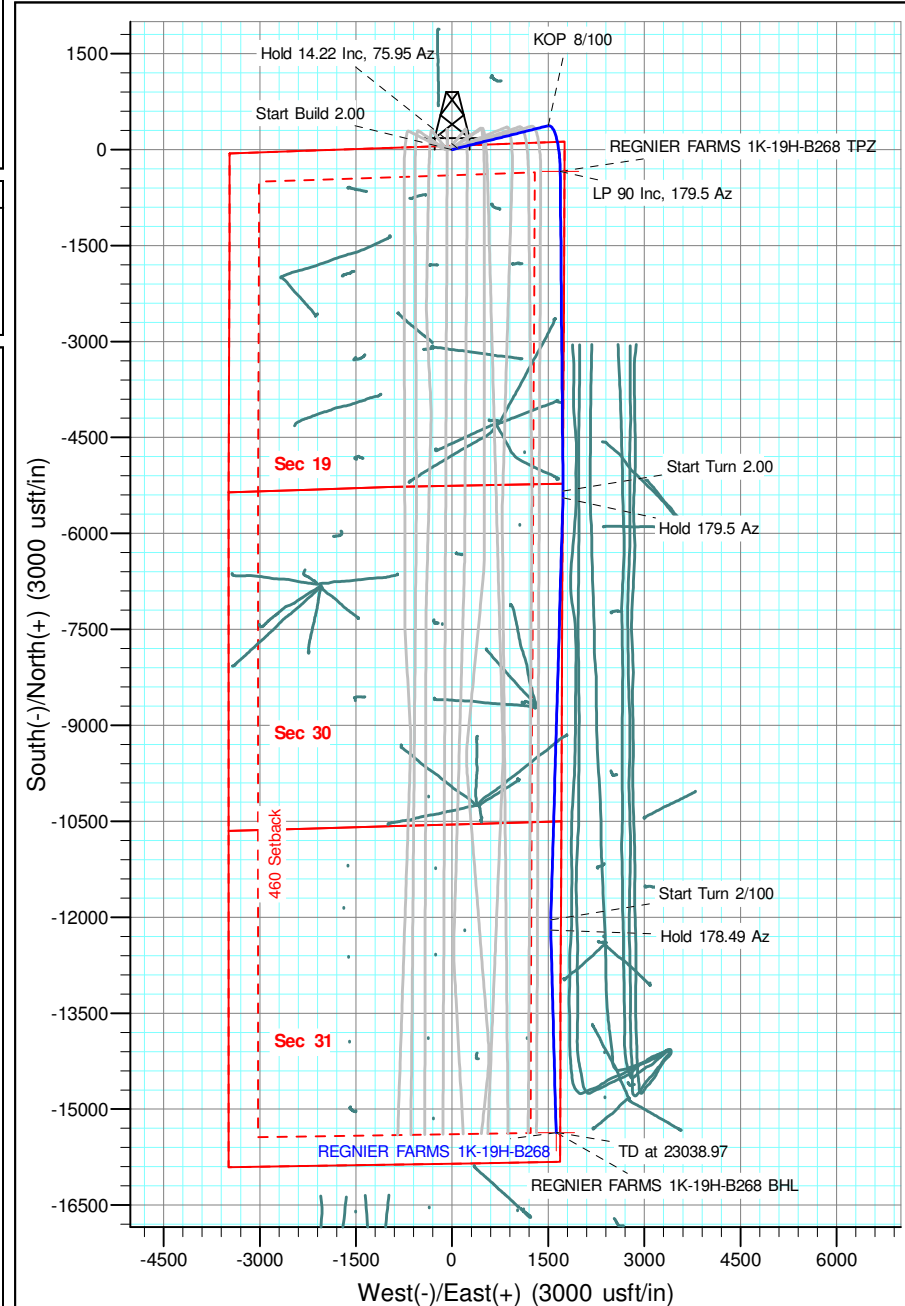


Geodetic Datum:

North American Datum 1983
US State Plane 1983, Colorado Northern Zone

Elevation:

Ground Elevation: 4965.00
KB Elevation: WELL @ 4988.00usft (Original Well Elev)





Crestone Peak Resources

Sec 19 T2N-R68W

Regnier Farms Pad

REGNIER FARMS 1K-19H-B268

Wellbore #1

Plan: Design #1 22Mar18 kjs

Standard Planning Report - Geographic

03 April, 2018

Database:	EDM 5000.14 Single User Db	Local Co-ordinate Reference:	Well REGNIER FARMS 1K-19H-B268
Company:	Crestone Peak Resources	TVD Reference:	WELL @ 4988.00usft (Original Well Elev)
Project:	Sec 19 T2N-R68W	MD Reference:	WELL @ 4988.00usft (Original Well Elev)
Site:	Regnier Farms Pad	North Reference:	True
Well:	REGNIER FARMS 1K-19H-B268	Survey Calculation Method:	Minimum Curvature
Wellbore:	Wellbore #1		
Design:	Design #1 22Mar18 kjs		

Project	Sec 19 T2N-R68W, Weld County, CO		
Map System:	US State Plane 1983	System Datum:	Mean Sea Level
Geo Datum:	North American Datum 1983		
Map Zone:	Colorado Northern Zone		

Site		Regnier Farms Pad			
Site Position:		Northing:	1,290,967.816 usft	Latitude:	40.131198
From:	Map	Easting:	3,127,697.187 usft	Longitude:	-105.043308
Position Uncertainty:	0.00 usft	Slot Radius:	13-3/16 "	Grid Convergence:	0.30 °

Well	REGNIER FARMS 1K-19H-B268					
Well Position	+N/-S	0.00 usft	Northing:	1,290,972.144 usft	Latitude:	40.131208
	+E/-W	0.00 usft	Easting:	3,127,797.093 usft	Longitude:	-105.042951
Position Uncertainty		0.00 usft	Wellhead Elevation:		Ground Level:	4,965.00 usft

Wellbore	Wellbore #1				
Magnetics	Model Name	Sample Date	Declination (°)	Dip Angle (°)	Field Strength (nT)
	IGRF2015	3/22/2018	8.25	66.58	52,134.88581834

Design	Design #1 22Mar18 kjs			
Audit Notes:				
Version:	Phase:	PLAN	Tie On Depth:	0.00
Vertical Section:	Depth From (TVD) (usft)	+N/-S (usft)	+E/-W (usft)	Direction (°)
	0.00	0.00	0.00	173.97

Plan Survey Tool Program	Date	4/3/2018		
Depth From (usft)	Depth To (usft)	Survey (Wellbore)	Tool Name	Remarks
1	0.00	23,038.07 Design #1 22Mar18 kjs (Wellbore)	MWD OWSG MWD - Standard	

Database:	EDM 5000.14 Single User Db	Local Co-ordinate Reference:	Well REGNIER FARMS 1K-19H-B268
Company:	Crestone Peak Resources	TVD Reference:	WELL @ 4988.00usft (Original Well Elev)
Project:	Sec 19 T2N-R68W	MD Reference:	WELL @ 4988.00usft (Original Well Elev)
Site:	Regnier Farms Pad	North Reference:	True
Well:	REGNIER FARMS 1K-19H-B268	Survey Calculation Method:	Minimum Curvature
Wellbore:	Wellbore #1		
Design:	Design #1 22Mar18 kjs		

Plan Sections										
Measured Depth (usft)	Inclination (°)	Azimuth (°)	Vertical Depth (usft)	+N/-S (usft)	+E/-W (usft)	Dogleg Rate (°/100usft)	Build Rate (°/100usft)	Turn Rate (°/100usft)	TFO (°)	Target
0.00	0.00	0.00	0.00	0.00	0.00	0.00	0.00	0.00	0.00	
200.00	0.00	0.00	200.00	0.00	0.00	0.00	0.00	0.00	0.00	
911.24	14.22	75.95	903.95	21.33	85.21	2.00	2.00	0.00	75.95	
6,842.71	14.22	75.95	6,653.56	375.28	1,499.09	0.00	0.00	0.00	0.00	
8,008.97	90.00	179.50	7,389.00	-338.12	1,686.56	8.00	6.50	8.88	103.15	REGNIER FARMS 1K
13,008.98	90.00	179.50	7,389.00	-5,337.93	1,730.20	0.00	0.00	0.00	0.00	
13,116.48	90.00	181.65	7,389.00	-5,445.42	1,729.12	2.00	0.00	2.00	90.00	
19,716.48	90.00	181.65	7,389.00	-12,042.68	1,539.08	0.00	0.00	0.00	0.00	
19,874.63	90.00	178.49	7,389.00	-12,200.82	1,538.89	2.00	0.00	-2.00	-90.00	
23,038.97	90.00	178.49	7,389.00	-15,364.05	1,622.45	0.00	0.00	0.00	0.00	REGNIER FARMS 1K

Database:	EDM 5000.14 Single User Db	Local Co-ordinate Reference:	Well REGNIER FARMS 1K-19H-B268
Company:	Crestone Peak Resources	TVD Reference:	WELL @ 4988.00usft (Original Well Elev)
Project:	Sec 19 T2N-R68W	MD Reference:	WELL @ 4988.00usft (Original Well Elev)
Site:	Regnier Farms Pad	North Reference:	True
Well:	REGNIER FARMS 1K-19H-B268	Survey Calculation Method:	Minimum Curvature
Wellbore:	Wellbore #1		
Design:	Design #1 22Mar18 kjs		

Planned Survey									
Measured Depth (usft)	Inclination (°)	Azimuth (°)	Vertical Depth (usft)	+N/-S (usft)	+E/-W (usft)	Map Northing (usft)	Map Easting (usft)	Latitude	Longitude
0.00	0.00	0.00	0.00	0.00	0.00	1,290,972.144	3,127,797.093	40.131208	-105.042951
200.00	0.00	0.00	200.00	0.00	0.00	1,290,972.144	3,127,797.093	40.131208	-105.042951
Start Build 2.00									
400.00	4.00	75.95	399.84	1.69	6.77	1,290,973.873	3,127,803.854	40.131213	-105.042927
600.00	8.00	75.95	598.70	6.77	27.05	1,290,979.053	3,127,824.104	40.131227	-105.042854
800.00	12.00	75.95	795.62	15.20	60.73	1,290,987.659	3,127,857.743	40.131250	-105.042734
911.24	14.22	75.95	903.95	21.33	85.21	1,290,993.913	3,127,882.189	40.131267	-105.042646
Hold 14.22 Inc, 75.95 Az									
1,000.00	14.22	75.95	989.99	26.63	106.37	1,290,999.319	3,127,903.320	40.131281	-105.042571
1,200.00	14.22	75.95	1,183.86	38.56	154.04	1,291,011.499	3,127,950.932	40.131314	-105.042400
1,400.00	14.22	75.95	1,377.73	50.50	201.71	1,291,023.679	3,127,998.544	40.131347	-105.042230
1,600.00	14.22	75.95	1,571.60	62.43	249.39	1,291,035.859	3,128,046.156	40.131379	-105.042059
1,800.00	14.22	75.95	1,765.47	74.37	297.06	1,291,048.040	3,128,093.767	40.131412	-105.041889
2,000.00	14.22	75.95	1,959.33	86.30	344.74	1,291,060.220	3,128,141.379	40.131445	-105.041718
2,200.00	14.22	75.95	2,153.20	98.23	392.41	1,291,072.400	3,128,188.991	40.131478	-105.041548
2,400.00	14.22	75.95	2,347.07	110.17	440.08	1,291,084.580	3,128,236.603	40.131510	-105.041377
2,600.00	14.22	75.95	2,540.94	122.10	487.76	1,291,096.760	3,128,284.215	40.131543	-105.041207
2,800.00	14.22	75.95	2,734.81	134.04	535.43	1,291,108.940	3,128,331.826	40.131576	-105.041036
3,000.00	14.22	75.95	2,928.67	145.97	583.11	1,291,121.121	3,128,379.438	40.131609	-105.040866
3,200.00	14.22	75.95	3,122.54	157.91	630.78	1,291,133.301	3,128,427.050	40.131641	-105.040695
3,400.00	14.22	75.95	3,316.41	169.84	678.45	1,291,145.481	3,128,474.662	40.131674	-105.040525
3,600.00	14.22	75.95	3,510.28	181.78	726.13	1,291,157.661	3,128,522.274	40.131707	-105.040354
3,800.00	14.22	75.95	3,704.15	193.71	773.80	1,291,169.841	3,128,569.886	40.131740	-105.040184
4,000.00	14.22	75.95	3,898.01	205.65	821.47	1,291,182.021	3,128,617.497	40.131773	-105.040013
4,200.00	14.22	75.95	4,091.88	217.58	869.15	1,291,194.202	3,128,665.109	40.131805	-105.039843
4,400.00	14.22	75.95	4,285.75	229.52	916.82	1,291,206.382	3,128,712.721	40.131838	-105.039672
4,600.00	14.22	75.95	4,479.62	241.45	964.50	1,291,218.562	3,128,760.333	40.131871	-105.039502
4,800.00	14.22	75.95	4,673.48	253.38	1,012.17	1,291,230.742	3,128,807.945	40.131904	-105.039331
5,000.00	14.22	75.95	4,867.35	265.32	1,059.84	1,291,242.922	3,128,855.556	40.131936	-105.039161
5,200.00	14.22	75.95	5,061.22	277.25	1,107.52	1,291,255.102	3,128,903.168	40.131969	-105.038990
5,400.00	14.22	75.95	5,255.09	289.19	1,155.19	1,291,267.283	3,128,950.780	40.132002	-105.038820
5,600.00	14.22	75.95	5,448.96	301.12	1,202.87	1,291,279.463	3,128,998.392	40.132035	-105.038649
5,800.00	14.22	75.95	5,642.82	313.06	1,250.54	1,291,291.643	3,129,046.004	40.132067	-105.038479
6,000.00	14.22	75.95	5,836.69	324.99	1,298.21	1,291,303.823	3,129,093.615	40.132100	-105.038308
6,200.00	14.22	75.95	6,030.56	336.93	1,345.89	1,291,316.003	3,129,141.227	40.132133	-105.038138
6,400.00	14.22	75.95	6,224.43	348.86	1,393.56	1,291,328.184	3,129,188.839	40.132166	-105.037967
6,600.00	14.22	75.95	6,418.30	360.80	1,441.24	1,291,340.364	3,129,236.451	40.132198	-105.037796
6,800.00	14.22	75.95	6,612.16	372.73	1,488.91	1,291,352.544	3,129,284.063	40.132231	-105.037626
6,842.71	14.22	75.95	6,653.56	375.28	1,499.09	1,291,355.145	3,129,294.229	40.132238	-105.037590
KOP 8/100									
7,000.00	16.62	123.83	6,805.77	367.42	1,536.67	1,291,347.477	3,129,331.850	40.132217	-105.037455
7,200.00	28.60	152.63	6,990.59	308.60	1,582.73	1,291,288.893	3,129,378.214	40.132055	-105.037290
7,400.00	43.14	164.26	7,152.40	199.55	1,623.56	1,291,180.061	3,129,419.605	40.131756	-105.037144
7,600.00	58.35	170.76	7,278.67	48.74	1,656.00	1,291,029.414	3,129,452.816	40.131342	-105.037029
7,800.00	73.78	175.39	7,359.61	-132.17	1,677.52	1,290,848.622	3,129,475.274	40.130845	-105.036952
8,000.00	89.30	179.33	7,388.95	-329.15	1,686.47	1,290,651.694	3,129,485.238	40.130304	-105.036920
8,008.97	90.00	179.50	7,389.00	-338.12	1,686.56	1,290,642.721	3,129,485.376	40.130280	-105.036919
LP 90 Inc, 179.5 Az									
8,200.00	90.00	179.50	7,389.00	-529.14	1,688.23	1,290,451.714	3,129,488.028	40.129755	-105.036913
8,400.00	90.00	179.50	7,389.00	-729.13	1,689.97	1,290,251.733	3,129,490.804	40.129206	-105.036907
8,600.00	90.00	179.50	7,389.00	-929.12	1,691.72	1,290,051.752	3,129,493.580	40.128657	-105.036901
8,800.00	90.00	179.50	7,389.00	-1,129.12	1,693.47	1,289,851.772	3,129,496.356	40.128108	-105.036895
9,000.00	90.00	179.50	7,389.00	-1,329.11	1,695.21	1,289,651.791	3,129,499.132	40.127559	-105.036889
9,200.00	90.00	179.50	7,389.00	-1,529.10	1,696.96	1,289,451.810	3,129,501.908	40.127010	-105.036882

Database:	EDM 5000.14 Single User Db	Local Co-ordinate Reference:	Well REGNIER FARMS 1K-19H-B268
Company:	Crestone Peak Resources	TVD Reference:	WELL @ 4988.00usft (Original Well Elev)
Project:	Sec 19 T2N-R68W	MD Reference:	WELL @ 4988.00usft (Original Well Elev)
Site:	Regnier Farms Pad	North Reference:	True
Well:	REGNIER FARMS 1K-19H-B268	Survey Calculation Method:	Minimum Curvature
Wellbore:	Wellbore #1		
Design:	Design #1 22Mar18 kjs		

Planned Survey									
Measured Depth (usft)	Inclination (°)	Azimuth (°)	Vertical Depth (usft)	+N/-S (usft)	+E/-W (usft)	Map Northing (usft)	Map Easting (usft)	Latitude	Longitude
9,400.00	90.00	179.50	7,389.00	-1,729.09	1,698.70	1,289,251.830	3,129,504.684	40.126461	-105.036876
9,600.00	90.00	179.50	7,389.00	-1,929.09	1,700.45	1,289,051.849	3,129,507.460	40.125912	-105.036870
9,800.00	90.00	179.50	7,389.00	-2,129.08	1,702.19	1,288,851.868	3,129,510.237	40.125363	-105.036864
10,000.00	90.00	179.50	7,389.00	-2,329.07	1,703.94	1,288,651.887	3,129,513.013	40.124814	-105.036858
10,200.00	90.00	179.50	7,389.00	-2,529.06	1,705.68	1,288,451.907	3,129,515.789	40.124265	-105.036851
10,400.00	90.00	179.50	7,389.00	-2,729.05	1,707.43	1,288,251.926	3,129,518.565	40.123716	-105.036845
10,600.00	90.00	179.50	7,389.00	-2,929.05	1,709.17	1,288,051.945	3,129,521.341	40.123167	-105.036839
10,800.00	90.00	179.50	7,389.00	-3,129.04	1,710.92	1,287,851.964	3,129,524.117	40.122618	-105.036833
11,000.00	90.00	179.50	7,389.00	-3,329.03	1,712.66	1,287,651.984	3,129,526.893	40.122069	-105.036827
11,200.00	90.00	179.50	7,389.00	-3,529.02	1,714.41	1,287,452.003	3,129,529.669	40.121520	-105.036820
11,400.00	90.00	179.50	7,389.00	-3,729.02	1,716.15	1,287,252.022	3,129,532.445	40.120971	-105.036814
11,600.00	90.00	179.50	7,389.00	-3,929.01	1,717.90	1,287,052.042	3,129,535.221	40.120422	-105.036808
11,800.00	90.00	179.50	7,389.00	-4,129.00	1,719.65	1,286,852.061	3,129,537.997	40.119873	-105.036802
12,000.00	90.00	179.50	7,389.00	-4,328.99	1,721.39	1,286,652.080	3,129,540.773	40.119324	-105.036796
12,200.00	90.00	179.50	7,389.00	-4,528.99	1,723.14	1,286,452.099	3,129,543.550	40.118775	-105.036790
12,400.00	90.00	179.50	7,389.00	-4,728.98	1,724.88	1,286,252.119	3,129,546.326	40.118226	-105.036783
12,600.00	90.00	179.50	7,389.00	-4,928.97	1,726.63	1,286,052.138	3,129,549.102	40.117677	-105.036777
12,800.00	90.00	179.50	7,389.00	-5,128.96	1,728.37	1,285,852.157	3,129,551.878	40.117128	-105.036771
13,000.00	90.00	179.50	7,389.00	-5,328.96	1,730.12	1,285,652.177	3,129,554.654	40.116579	-105.036765
13,008.98	90.00	179.50	7,389.00	-5,337.93	1,730.20	1,285,643.203	3,129,554.778	40.116554	-105.036764
Start Turn 2.00									
13,116.48	90.00	181.65	7,389.00	-5,445.42	1,729.12	1,285,535.710	3,129,554.254	40.116259	-105.036768
Hold 179.5 Az									
13,200.00	90.00	181.65	7,389.00	-5,528.91	1,726.71	1,285,452.208	3,129,552.279	40.116030	-105.036777
13,400.00	90.00	181.65	7,389.00	-5,728.83	1,720.95	1,285,252.264	3,129,547.551	40.115481	-105.036798
13,600.00	90.00	181.65	7,389.00	-5,928.74	1,715.19	1,285,052.320	3,129,542.822	40.114933	-105.036818
13,800.00	90.00	181.65	7,389.00	-6,128.66	1,709.44	1,284,852.376	3,129,538.094	40.114384	-105.036839
14,000.00	90.00	181.65	7,389.00	-6,328.58	1,703.68	1,284,652.432	3,129,533.366	40.113835	-105.036860
14,200.00	90.00	181.65	7,389.00	-6,528.49	1,697.92	1,284,452.488	3,129,528.638	40.113286	-105.036880
14,400.00	90.00	181.65	7,389.00	-6,728.41	1,692.16	1,284,252.544	3,129,523.909	40.112737	-105.036901
14,600.00	90.00	181.65	7,389.00	-6,928.33	1,686.40	1,284,052.600	3,129,519.181	40.112189	-105.036921
14,800.00	90.00	181.65	7,389.00	-7,128.25	1,680.64	1,283,852.656	3,129,514.453	40.111640	-105.036942
15,000.00	90.00	181.65	7,389.00	-7,328.16	1,674.88	1,283,652.712	3,129,509.724	40.111091	-105.036963
15,200.00	90.00	181.65	7,389.00	-7,528.08	1,669.12	1,283,452.767	3,129,504.996	40.110542	-105.036983
15,400.00	90.00	181.65	7,389.00	-7,728.00	1,663.36	1,283,252.823	3,129,500.268	40.109993	-105.037004
15,600.00	90.00	181.65	7,389.00	-7,927.91	1,657.61	1,283,052.879	3,129,495.539	40.109445	-105.037025
15,800.00	90.00	181.65	7,389.00	-8,127.83	1,651.85	1,282,852.935	3,129,490.811	40.108896	-105.037045
16,000.00	90.00	181.65	7,389.00	-8,327.75	1,646.09	1,282,652.991	3,129,486.083	40.108347	-105.037066
16,200.00	90.00	181.65	7,389.00	-8,527.67	1,640.33	1,282,453.047	3,129,481.355	40.107798	-105.037087
16,400.00	90.00	181.65	7,389.00	-8,727.58	1,634.57	1,282,253.103	3,129,476.626	40.107249	-105.037107
16,600.00	90.00	181.65	7,389.00	-8,927.50	1,628.81	1,282,053.159	3,129,471.898	40.106701	-105.037128
16,800.00	90.00	181.65	7,389.00	-9,127.42	1,623.05	1,281,853.215	3,129,467.170	40.106152	-105.037148
17,000.00	90.00	181.65	7,389.00	-9,327.33	1,617.29	1,281,653.271	3,129,462.441	40.105603	-105.037169
17,200.00	90.00	181.65	7,389.00	-9,527.25	1,611.54	1,281,453.327	3,129,457.713	40.105054	-105.037190
17,400.00	90.00	181.65	7,389.00	-9,727.17	1,605.78	1,281,253.382	3,129,452.985	40.104505	-105.037210
17,600.00	90.00	181.65	7,389.00	-9,927.08	1,600.02	1,281,053.438	3,129,448.256	40.103957	-105.037231
17,800.00	90.00	181.65	7,389.00	-10,127.00	1,594.26	1,280,853.494	3,129,443.528	40.103408	-105.037252
18,000.00	90.00	181.65	7,389.00	-10,326.92	1,588.50	1,280,653.550	3,129,438.800	40.102859	-105.037272
18,200.00	90.00	181.65	7,389.00	-10,526.84	1,582.74	1,280,453.606	3,129,434.071	40.102310	-105.037293
18,400.00	90.00	181.65	7,389.00	-10,726.75	1,576.98	1,280,253.662	3,129,429.343	40.101761	-105.037314
18,600.00	90.00	181.65	7,389.00	-10,926.67	1,571.22	1,280,053.718	3,129,424.615	40.101213	-105.037334
18,800.00	90.00	181.65	7,389.00	-11,126.59	1,565.47	1,279,853.774	3,129,419.887	40.100664	-105.037355
19,000.00	90.00	181.65	7,389.00	-11,326.50	1,559.71	1,279,653.830	3,129,415.158	40.100115	-105.037375
19,200.00	90.00	181.65	7,389.00	-11,526.42	1,553.95	1,279,453.886	3,129,410.430	40.099566	-105.037396

Database:	EDM 5000.14 Single User Db	Local Co-ordinate Reference:	Well REGNIER FARMS 1K-19H-B268
Company:	Crestone Peak Resources	TVD Reference:	WELL @ 4988.00usft (Original Well Elev)
Project:	Sec 19 T2N-R68W	MD Reference:	WELL @ 4988.00usft (Original Well Elev)
Site:	Regnier Farms Pad	North Reference:	True
Well:	REGNIER FARMS 1K-19H-B268	Survey Calculation Method:	Minimum Curvature
Wellbore:	Wellbore #1		
Design:	Design #1 22Mar18 kjs		

Planned Survey									
Measured Depth (usft)	Inclination (°)	Azimuth (°)	Vertical Depth (usft)	+N/-S (usft)	+E/-W (usft)	Map Northing (usft)	Map Easting (usft)	Latitude	Longitude
19,400.00	90.00	181.65	7,389.00	-11,726.34	1,548.19	1,279,253.942	3,129,405.702	40.099017	-105.037417
19,600.00	90.00	181.65	7,389.00	-11,926.26	1,542.43	1,279,053.997	3,129,400.973	40.098469	-105.037437
19,716.48	90.00	181.65	7,389.00	-12,042.68	1,539.08	1,278,937.555	3,129,398.220	40.098149	-105.037449
Start Turn 2/100									
19,800.00	90.00	179.98	7,389.00	-12,126.20	1,537.89	1,278,854.036	3,129,397.463	40.097920	-105.037454
19,874.63	90.00	178.49	7,389.00	-12,200.82	1,538.89	1,278,779.420	3,129,398.846	40.097715	-105.037450
Hold 178.49 Az									
20,000.00	90.00	178.49	7,389.00	-12,326.14	1,542.20	1,278,654.114	3,129,402.802	40.097371	-105.037438
20,200.00	90.00	178.49	7,389.00	-12,526.07	1,547.48	1,278,454.213	3,129,409.114	40.096822	-105.037419
20,400.00	90.00	178.49	7,389.00	-12,726.00	1,552.76	1,278,254.313	3,129,415.426	40.096273	-105.037401
20,600.00	90.00	178.49	7,389.00	-12,925.93	1,558.04	1,278,054.413	3,129,421.737	40.095724	-105.037382
20,800.00	90.00	178.49	7,389.00	-13,125.86	1,563.32	1,277,854.512	3,129,428.049	40.095175	-105.037363
21,000.00	90.00	178.49	7,389.00	-13,325.79	1,568.60	1,277,654.612	3,129,434.360	40.094627	-105.037344
21,200.00	90.00	178.49	7,389.00	-13,525.72	1,573.89	1,277,454.712	3,129,440.672	40.094078	-105.037325
21,400.00	90.00	178.49	7,389.00	-13,725.66	1,579.17	1,277,254.811	3,129,446.984	40.093529	-105.037306
21,600.00	90.00	178.49	7,389.00	-13,925.59	1,584.45	1,277,054.911	3,129,453.295	40.092980	-105.037288
21,800.00	90.00	178.49	7,389.00	-14,125.52	1,589.73	1,276,855.010	3,129,459.607	40.092431	-105.037269
22,000.00	90.00	178.49	7,389.00	-14,325.45	1,595.01	1,276,655.110	3,129,465.918	40.091882	-105.037250
22,200.00	90.00	178.49	7,389.00	-14,525.38	1,600.29	1,276,455.210	3,129,472.230	40.091334	-105.037231
22,400.00	90.00	178.49	7,389.00	-14,725.31	1,605.57	1,276,255.309	3,129,478.542	40.090785	-105.037212
22,600.00	90.00	178.49	7,389.00	-14,925.24	1,610.85	1,276,055.409	3,129,484.853	40.090236	-105.037193
22,800.00	90.00	178.49	7,389.00	-15,125.17	1,616.13	1,275,855.509	3,129,491.165	40.089687	-105.037175
23,000.00	90.00	178.49	7,389.00	-15,325.10	1,621.42	1,275,655.608	3,129,497.477	40.089138	-105.037156
23,038.97	90.00	178.49	7,389.00	-15,364.05	1,622.45	1,275,616.656	3,129,498.706	40.089031	-105.037152
TD at 23038.97									

Design Targets									
Target Name - hit/miss target - Shape	Dip Angle (°)	Dip Dir. (°)	TVD (usft)	+N/-S (usft)	+E/-W (usft)	Northing (usft)	Easting (usft)	Latitude	Longitude
REGNIER FARMS 1K-1: - plan hits target center - Point	0.00	0.00	7,389.00	-15,364.05	1,622.45	1,275,616.656	3,129,498.706	40.089031	-105.037152
REGNIER FARMS 1K-1: - plan hits target center - Point	0.00	0.00	7,389.00	-338.12	1,686.56	1,290,642.721	3,129,485.376	40.130280	-105.036919

Plan Annotations					
Measured Depth (usft)	Vertical Depth (usft)	Local Coordinates			
		+N/-S (usft)	+E/-W (usft)	Comment	
200.00	200.00	0.00	0.00	Start Build 2.00	
911.24	903.95	21.33	85.21	Hold 14.22 Inc, 75.95 Az	
6,842.71	6,653.56	375.28	1,499.09	KOP 8/100	
8,008.97	7,389.00	-338.12	1,686.56	LP 90 Inc, 179.5 Az	
13,008.98	7,389.00	-5,337.93	1,730.20	Start Turn 2.00	
13,116.48	7,389.00	-5,445.42	1,729.12	Hold 179.5 Az	
19,716.48	7,389.00	-12,042.68	1,539.08	Start Turn 2/100	
19,874.63	7,389.00	-12,200.82	1,538.89	Hold 178.49 Az	
23,038.97	7,389.00	-15,364.05	1,622.45	TD at 23038.97	