



Crestone Peak Resources

Well Name:

REGNIER FARMS 11-19H-B268

Project Name:

Sec 19 T2N-R68W

Pad Name:

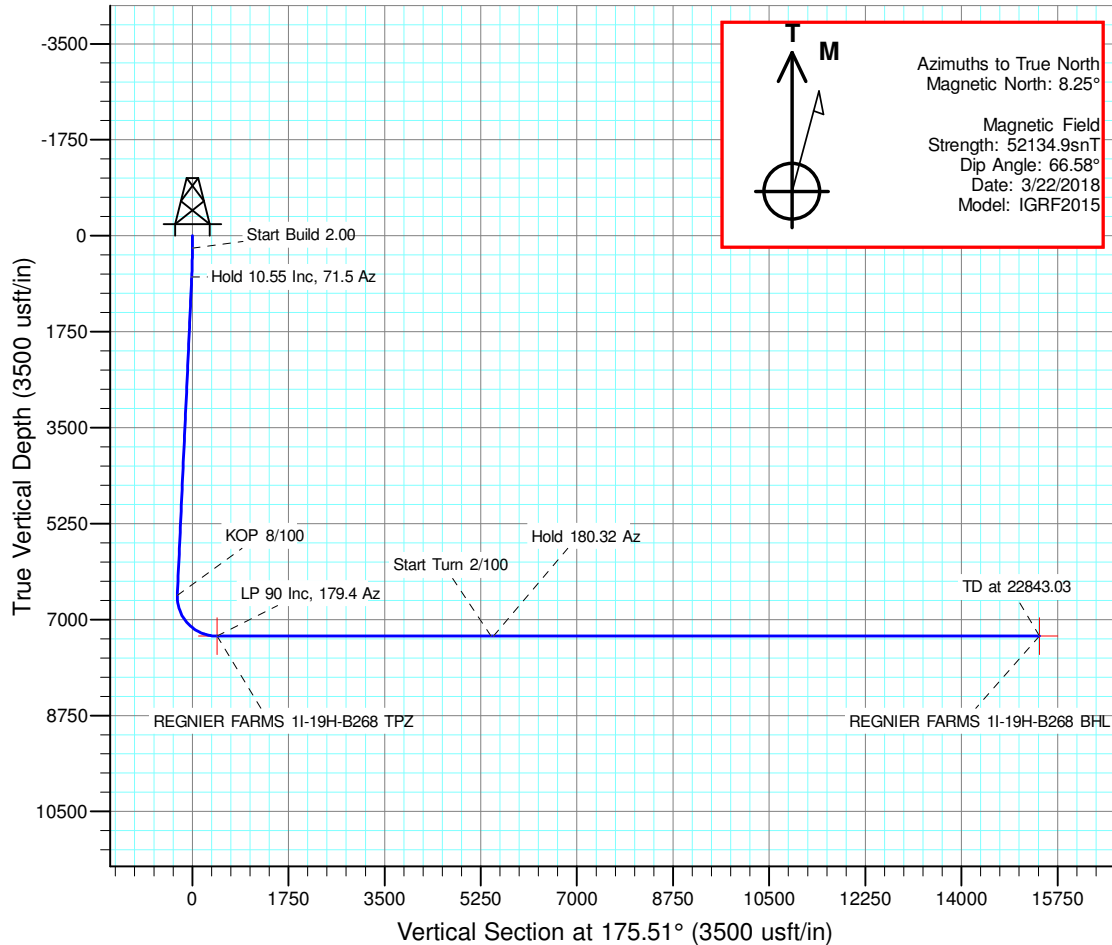
Regnier Farms Pad

ANNOTATIONS

MD	Inc	Azi	TVD	+N/-S	+E/-W	Vsect	Departure	Annotation
225.00	0.00	0.00	225.00	0.00	0.00	0.00	0.00	Start Build 2.00
752.48	10.55	71.50	749.51	15.36	45.92	-11.72	48.42	Hold 10.55 Inc, 71.5 Az
6661.98	10.55	71.50	6559.11	358.64	1071.98	-273.59	1130.38	KOP 8/100
7827.30	90.00	179.40	7304.00	-355.00	1211.47	448.78	1883.02	LP 90 Inc, 179.4 Az
12827.30	90.00	179.40	7304.00	-5354.73	1263.83	5437.26	6883.02	Start Turn 2/100
12873.54	90.00	180.32	7304.00	-5400.97	1263.94	5483.36	6929.26	Hold 180.32 Az
22843.03	90.00	180.32	7304.00	-15370.30	1207.43	15417.65	16898.75	TD at 22843.03

DESIGN TARGET DETAILS

Name	TVD	+N/-S	+E/-W	Northing	Easting	Latitude	Longitude	Shape
REGNIER FARMS 11-19H-B268 BHL	7304.00	-15370.30	1207.43	1275607.406	3129063.733	40.089012	-105.038707	Point
REGNIER FARMS 11-19H-B268 TPZ	7304.00	-355.00	1211.47	1290622.521	3128990.394	40.130231	-105.038690	Point

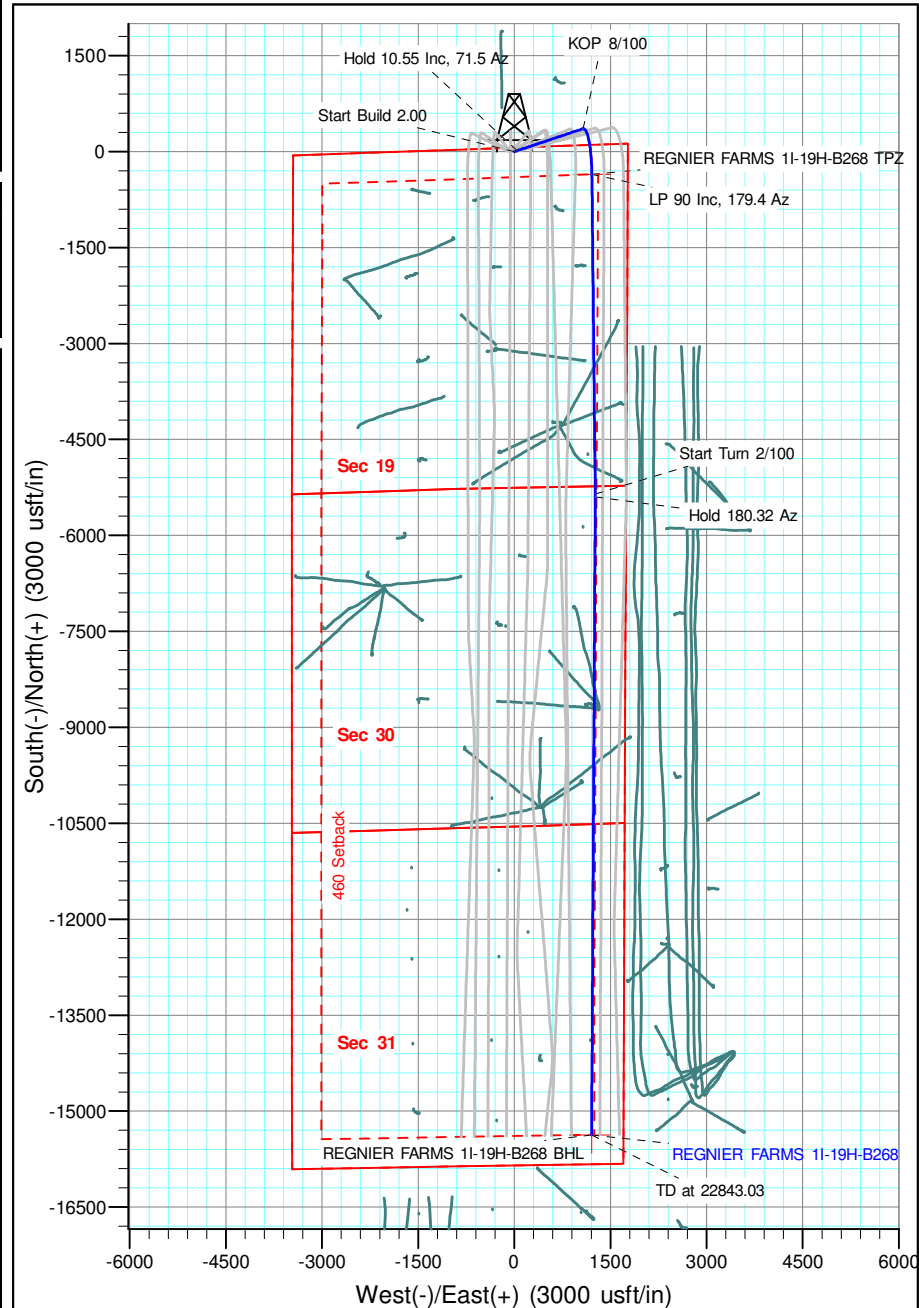


Geodetic Datum:

North American Datum 1983
US State Plane 1983, Colorado Northern Zone

Elevation:

Ground Elevation: 4965.00
KB Elevation: WELL @ 4988.00usft (Original Well Elev)





Crestone Peak Resources

Sec 19 T2N-R68W

Regnier Farms Pad

REGNIER FARMS 1I-19H-B268

Wellbore #1

Plan: Design #1 22Mar18 kjs

Standard Planning Report - Geographic

03 April, 2018

Database:	EDM 5000.14 Single User Db	Local Co-ordinate Reference:	Well REGNIER FARMS 11-19H-B268
Company:	Crestone Peak Resources	TVD Reference:	WELL @ 4988.00usft (Original Well Elev)
Project:	Sec 19 T2N-R68W	MD Reference:	WELL @ 4988.00usft (Original Well Elev)
Site:	Regnier Farms Pad	North Reference:	True
Well:	REGNIER FARMS 11-19H-B268	Survey Calculation Method:	Minimum Curvature
Wellbore:	Wellbore #1		
Design:	Design #1 22Mar18 kjs		

Project	Sec 19 T2N-R68W, Weld County, CO		
Map System:	US State Plane 1983	System Datum:	Mean Sea Level
Geo Datum:	North American Datum 1983		
Map Zone:	Colorado Northern Zone		

Site		Regnier Farms Pad			
Site Position:		Northing:	1,290,967.816 usft	Latitude:	40.131198
From:	Map	Easting:	3,127,697.187 usft	Longitude:	-105.043308
Position Uncertainty:	0.00 usft	Slot Radius:	13-3/16 "	Grid Convergence:	0.30 °

Well	REGNIER FARMS 11-19H-B268					
Well Position	+N/-S	0.00 usft	Northing:	1,290,971.278 usft	Latitude:	40.131206
	+E/-W	0.00 usft	Easting:	3,127,777.112 usft	Longitude:	-105.043022
Position Uncertainty		0.00 usft	Wellhead Elevation:		Ground Level:	4,965.00 usft

Wellbore	Wellbore #1				
Magnetics	Model Name	Sample Date	Declination (°)	Dip Angle (°)	Field Strength (nT)
	IGRF2015	3/22/2018	8.25	66.58	52,134.87705953

Design	Design #1 22Mar18 kjs			
Audit Notes:				
Version:	Phase:	PLAN	Tie On Depth:	0.00
Vertical Section:	Depth From (TVD) (usft)	+N/-S (usft)	+E/-W (usft)	Direction (°)
	0.00	0.00	0.00	175.51

Plan Survey Tool Program	Date	4/3/2018		
Depth From (usft)	Depth To (usft)	Survey (Wellbore)	Tool Name	Remarks
1	0.00	22,843.03 Design #1 22Mar18 kjs (Wellbore)	MWD	
			OWSG MWD - Standard	

Plan Sections										
Measured Depth (usft)	Inclination (°)	Azimuth (°)	Vertical Depth (usft)	+N/-S (usft)	+E/-W (usft)	Dogleg Rate (°/100usft)	Build Rate (°/100usft)	Turn Rate (°/100usft)	TFO (°)	Target
0.00	0.00	0.00	0.00	0.00	0.00	0.00	0.00	0.00	0.00	
225.00	0.00	0.00	225.00	0.00	0.00	0.00	0.00	0.00	0.00	
752.48	10.55	71.50	749.51	15.36	45.92	2.00	2.00	0.00	71.50	
6,661.98	10.55	71.50	6,559.11	358.64	1,071.98	0.00	0.00	0.00	0.00	
7,827.30	90.00	179.40	7,304.00	-355.00	1,211.47	8.00	6.82	9.26	107.61	REGNIER FARMS 11-
12,827.30	90.00	179.40	7,304.00	-5,354.73	1,263.83	0.00	0.00	0.00	0.00	
12,873.54	90.00	180.32	7,304.00	-5,400.97	1,263.94	2.00	0.00	2.00	90.00	
22,843.03	90.00	180.32	7,304.00	-15,370.30	1,207.43	0.00	0.00	0.00	0.00	REGNIER FARMS 11-

Database:	EDM 5000.14 Single User Db	Local Co-ordinate Reference:	Well REGNIER FARMS 11-19H-B268
Company:	Crestone Peak Resources	TVD Reference:	WELL @ 4988.00usft (Original Well Elev)
Project:	Sec 19 T2N-R68W	MD Reference:	WELL @ 4988.00usft (Original Well Elev)
Site:	Regnier Farms Pad	North Reference:	True
Well:	REGNIER FARMS 11-19H-B268	Survey Calculation Method:	Minimum Curvature
Wellbore:	Wellbore #1		
Design:	Design #1 22Mar18 kjs		

Planned Survey									
Measured Depth (usft)	Inclination (°)	Azimuth (°)	Vertical Depth (usft)	+N/-S (usft)	+E/-W (usft)	Map Northing (usft)	Map Easting (usft)	Latitude	Longitude
0.00	0.00	0.00	0.00	0.00	0.00	1,290,971.278	3,127,777.112	40.131206	-105.043022
200.00	0.00	0.00	200.00	0.00	0.00	1,290,971.278	3,127,777.112	40.131206	-105.043022
225.00	0.00	0.00	225.00	0.00	0.00	1,290,971.278	3,127,777.112	40.131206	-105.043022
Start Build 2.00									
400.00	3.50	71.50	399.89	1.70	5.07	1,290,972.999	3,127,782.171	40.131211	-105.043004
600.00	7.50	71.50	598.93	7.78	23.24	1,290,979.173	3,127,800.314	40.131227	-105.042939
752.48	10.55	71.50	749.51	15.36	45.92	1,290,986.878	3,127,822.955	40.131248	-105.042858
Hold 10.55 Inc, 71.5 Az									
800.00	10.55	71.50	796.22	18.12	54.17	1,290,989.681	3,127,831.191	40.131256	-105.042829
1,000.00	10.55	71.50	992.84	29.74	88.90	1,291,001.477	3,127,865.857	40.131288	-105.042704
1,200.00	10.55	71.50	1,189.46	41.36	123.62	1,291,013.273	3,127,900.522	40.131319	-105.042580
1,400.00	10.55	71.50	1,386.08	52.98	158.35	1,291,025.070	3,127,935.187	40.131351	-105.042456
1,600.00	10.55	71.50	1,582.70	64.59	193.08	1,291,036.866	3,127,969.853	40.131383	-105.042332
1,800.00	10.55	71.50	1,779.32	76.21	227.80	1,291,048.663	3,128,004.518	40.131415	-105.042208
2,000.00	10.55	71.50	1,975.94	87.83	262.53	1,291,060.459	3,128,039.183	40.131447	-105.042084
2,200.00	10.55	71.50	2,172.56	99.45	297.25	1,291,072.256	3,128,073.848	40.131479	-105.041959
2,400.00	10.55	71.50	2,369.18	111.07	331.98	1,291,084.052	3,128,108.514	40.131511	-105.041835
2,600.00	10.55	71.50	2,565.80	122.68	366.70	1,291,095.849	3,128,143.179	40.131543	-105.041711
2,800.00	10.55	71.50	2,762.41	134.30	401.43	1,291,107.645	3,128,177.844	40.131575	-105.041587
3,000.00	10.55	71.50	2,959.03	145.92	436.15	1,291,119.442	3,128,212.510	40.131606	-105.041463
3,200.00	10.55	71.50	3,155.65	157.54	470.88	1,291,131.238	3,128,247.175	40.131638	-105.041338
3,400.00	10.55	71.50	3,352.27	169.15	505.61	1,291,143.034	3,128,281.840	40.131670	-105.041214
3,600.00	10.55	71.50	3,548.89	180.77	540.33	1,291,154.831	3,128,316.505	40.131702	-105.041090
3,800.00	10.55	71.50	3,745.51	192.39	575.06	1,291,166.627	3,128,351.171	40.131734	-105.040966
4,000.00	10.55	71.50	3,942.13	204.01	609.78	1,291,178.424	3,128,385.836	40.131766	-105.040842
4,200.00	10.55	71.50	4,138.75	215.62	644.51	1,291,190.220	3,128,420.501	40.131798	-105.040717
4,400.00	10.55	71.50	4,335.37	227.24	679.23	1,291,202.017	3,128,455.166	40.131830	-105.040593
4,600.00	10.55	71.50	4,531.99	238.86	713.96	1,291,213.813	3,128,489.832	40.131862	-105.040469
4,800.00	10.55	71.50	4,728.61	250.48	748.69	1,291,225.610	3,128,524.497	40.131893	-105.040345
5,000.00	10.55	71.50	4,925.23	262.09	783.41	1,291,237.406	3,128,559.162	40.131925	-105.040221
5,200.00	10.55	71.50	5,121.85	273.71	818.14	1,291,249.203	3,128,593.828	40.131957	-105.040096
5,400.00	10.55	71.50	5,318.47	285.33	852.86	1,291,260.999	3,128,628.493	40.131989	-105.039972
5,600.00	10.55	71.50	5,515.09	296.95	887.59	1,291,272.796	3,128,663.158	40.132021	-105.039848
5,800.00	10.55	71.50	5,711.70	308.57	922.31	1,291,284.592	3,128,697.823	40.132053	-105.039724
6,000.00	10.55	71.50	5,908.32	320.18	957.04	1,291,296.388	3,128,732.489	40.132085	-105.039600
6,200.00	10.55	71.50	6,104.94	331.80	991.76	1,291,308.185	3,128,767.154	40.132117	-105.039475
6,400.00	10.55	71.50	6,301.56	343.42	1,026.49	1,291,319.981	3,128,801.819	40.132149	-105.039351
6,600.00	10.55	71.50	6,498.18	355.04	1,061.22	1,291,331.778	3,128,836.485	40.132180	-105.039227
6,661.98	10.55	71.50	6,559.11	358.64	1,071.98	1,291,335.433	3,128,847.227	40.132190	-105.039189
KOP 8/100									
6,800.00	12.71	127.59	6,694.70	353.37	1,096.06	1,291,330.290	3,128,871.339	40.132176	-105.039102
7,000.00	25.74	157.83	6,883.56	299.39	1,130.10	1,291,276.486	3,128,905.654	40.132028	-105.038981
7,200.00	40.86	167.58	7,050.36	194.61	1,160.76	1,291,171.864	3,128,936.853	40.131740	-105.038871
7,400.00	56.41	172.64	7,182.17	47.14	1,185.66	1,291,024.529	3,128,962.518	40.131335	-105.038782
7,600.00	72.10	176.12	7,268.78	-131.58	1,202.89	1,290,845.896	3,128,980.662	40.130845	-105.038720
7,800.00	87.85	179.02	7,303.49	-327.72	1,211.09	1,290,649.806	3,128,989.877	40.130306	-105.038691
7,827.30	90.00	179.40	7,304.00	-355.00	1,211.47	1,290,622.521	3,128,990.394	40.130231	-105.038690
LP 90 Inc, 179.4 Az									
8,000.00	90.00	179.40	7,304.00	-527.70	1,213.28	1,290,449.839	3,128,993.093	40.129757	-105.038683
8,200.00	90.00	179.40	7,304.00	-727.69	1,215.37	1,290,249.863	3,128,996.218	40.129208	-105.038676
8,400.00	90.00	179.40	7,304.00	-927.68	1,217.47	1,290,049.888	3,128,999.343	40.128659	-105.038668
8,600.00	90.00	179.40	7,304.00	-1,127.67	1,219.56	1,289,849.912	3,129,002.468	40.128110	-105.038661
8,800.00	90.00	179.40	7,304.00	-1,327.65	1,221.65	1,289,649.936	3,129,005.593	40.127561	-105.038654
9,000.00	90.00	179.40	7,304.00	-1,527.64	1,223.75	1,289,449.961	3,129,008.718	40.127012	-105.038646

Database:	EDM 5000.14 Single User Db	Local Co-ordinate Reference:	Well REGNIER FARMS 11-19H-B268
Company:	Crestone Peak Resources	TVD Reference:	WELL @ 4988.00usft (Original Well Elev)
Project:	Sec 19 T2N-R68W	MD Reference:	WELL @ 4988.00usft (Original Well Elev)
Site:	Regnier Farms Pad	North Reference:	True
Well:	REGNIER FARMS 11-19H-B268	Survey Calculation Method:	Minimum Curvature
Wellbore:	Wellbore #1		
Design:	Design #1 22Mar18 kjs		

Planned Survey										
Measured Depth (usft)	Inclination (°)	Azimuth (°)	Vertical Depth (usft)	+N/-S (usft)	+E/-W (usft)	Map Northing (usft)	Map Easting (usft)	Latitude	Longitude	
9,200.00	90.00	179.40	7,304.00	-1,727.63	1,225.84	1,289,249.985	3,129,011.843	40.126463	-105.038639	
9,400.00	90.00	179.40	7,304.00	-1,927.62	1,227.94	1,289,050.010	3,129,014.967	40.125914	-105.038631	
9,600.00	90.00	179.40	7,304.00	-2,127.61	1,230.03	1,288,850.034	3,129,018.092	40.125365	-105.038624	
9,800.00	90.00	179.40	7,304.00	-2,327.60	1,232.13	1,288,650.059	3,129,021.217	40.124816	-105.038616	
10,000.00	90.00	179.40	7,304.00	-2,527.59	1,234.22	1,288,450.083	3,129,024.342	40.124267	-105.038609	
10,200.00	90.00	179.40	7,304.00	-2,727.58	1,236.32	1,288,250.107	3,129,027.467	40.123718	-105.038601	
10,400.00	90.00	179.40	7,304.00	-2,927.57	1,238.41	1,288,050.132	3,129,030.592	40.123169	-105.038594	
10,600.00	90.00	179.40	7,304.00	-3,127.56	1,240.50	1,287,850.156	3,129,033.717	40.122620	-105.038586	
10,800.00	90.00	179.40	7,304.00	-3,327.55	1,242.60	1,287,650.181	3,129,036.842	40.122071	-105.038579	
11,000.00	90.00	179.40	7,304.00	-3,527.53	1,244.69	1,287,450.205	3,129,039.967	40.121522	-105.038572	
11,200.00	90.00	179.40	7,304.00	-3,727.52	1,246.79	1,287,250.230	3,129,043.092	40.120973	-105.038564	
11,400.00	90.00	179.40	7,304.00	-3,927.51	1,248.88	1,287,050.254	3,129,046.217	40.120424	-105.038557	
11,600.00	90.00	179.40	7,304.00	-4,127.50	1,250.98	1,286,850.278	3,129,049.342	40.119875	-105.038549	
11,800.00	90.00	179.40	7,304.00	-4,327.49	1,253.07	1,286,650.303	3,129,052.467	40.119326	-105.038542	
12,000.00	90.00	179.40	7,304.00	-4,527.48	1,255.16	1,286,450.327	3,129,055.592	40.118777	-105.038534	
12,200.00	90.00	179.40	7,304.00	-4,727.47	1,257.26	1,286,250.352	3,129,058.717	40.118228	-105.038527	
12,400.00	90.00	179.40	7,304.00	-4,927.46	1,259.35	1,286,050.376	3,129,061.842	40.117679	-105.038519	
12,600.00	90.00	179.40	7,304.00	-5,127.45	1,261.45	1,285,850.400	3,129,064.967	40.117130	-105.038512	
12,800.00	90.00	179.40	7,304.00	-5,327.44	1,263.54	1,285,650.425	3,129,068.092	40.116581	-105.038505	
12,827.30	90.00	179.40	7,304.00	-5,354.73	1,263.83	1,285,623.131	3,129,068.518	40.116506	-105.038504	
Start Turn 2/100										
12,873.54	90.00	180.32	7,304.00	-5,400.97	1,263.94	1,285,576.894	3,129,068.867	40.116379	-105.038503	
Hold 180.32 Az										
13,000.00	90.00	180.32	7,304.00	-5,527.43	1,263.22	1,285,450.430	3,129,068.802	40.116032	-105.038506	
13,200.00	90.00	180.32	7,304.00	-5,727.43	1,262.09	1,285,250.430	3,129,068.699	40.115483	-105.038510	
13,400.00	90.00	180.32	7,304.00	-5,927.42	1,260.95	1,285,050.430	3,129,068.596	40.114934	-105.038514	
13,600.00	90.00	180.32	7,304.00	-6,127.42	1,259.82	1,284,850.430	3,129,068.493	40.114385	-105.038518	
13,800.00	90.00	180.32	7,304.00	-6,327.42	1,258.69	1,284,650.430	3,129,068.390	40.113836	-105.038522	
14,000.00	90.00	180.32	7,304.00	-6,527.42	1,257.55	1,284,450.430	3,129,068.287	40.113287	-105.038526	
14,200.00	90.00	180.32	7,304.00	-6,727.41	1,256.42	1,284,250.430	3,129,068.184	40.112738	-105.038530	
14,400.00	90.00	180.32	7,304.00	-6,927.41	1,255.29	1,284,050.430	3,129,068.081	40.112189	-105.038534	
14,600.00	90.00	180.32	7,304.00	-7,127.41	1,254.15	1,283,850.430	3,129,067.978	40.111640	-105.038538	
14,800.00	90.00	180.32	7,304.00	-7,327.40	1,253.02	1,283,650.430	3,129,067.875	40.111091	-105.038543	
15,000.00	90.00	180.32	7,304.00	-7,527.40	1,251.89	1,283,450.430	3,129,067.772	40.110542	-105.038547	
15,200.00	90.00	180.32	7,304.00	-7,727.40	1,250.75	1,283,250.430	3,129,067.669	40.109993	-105.038551	
15,400.00	90.00	180.32	7,304.00	-7,927.39	1,249.62	1,283,050.431	3,129,067.566	40.109444	-105.038555	
15,600.00	90.00	180.32	7,304.00	-8,127.39	1,248.48	1,282,850.431	3,129,067.463	40.108895	-105.038559	
15,800.00	90.00	180.32	7,304.00	-8,327.39	1,247.35	1,282,650.431	3,129,067.360	40.108346	-105.038563	
16,000.00	90.00	180.32	7,304.00	-8,527.38	1,246.22	1,282,450.431	3,129,067.257	40.107797	-105.038567	
16,200.00	90.00	180.32	7,304.00	-8,727.38	1,245.08	1,282,250.431	3,129,067.154	40.107248	-105.038571	
16,400.00	90.00	180.32	7,304.00	-8,927.38	1,243.95	1,282,050.431	3,129,067.051	40.106699	-105.038575	
16,600.00	90.00	180.32	7,304.00	-9,127.37	1,242.82	1,281,850.431	3,129,066.948	40.106150	-105.038579	
16,800.00	90.00	180.32	7,304.00	-9,327.37	1,241.68	1,281,650.431	3,129,066.845	40.105601	-105.038583	
17,000.00	90.00	180.32	7,304.00	-9,527.37	1,240.55	1,281,450.431	3,129,066.742	40.105052	-105.038587	
17,200.00	90.00	180.32	7,304.00	-9,727.36	1,239.41	1,281,250.431	3,129,066.639	40.104503	-105.038592	
17,400.00	90.00	180.32	7,304.00	-9,927.36	1,238.28	1,281,050.431	3,129,066.536	40.103954	-105.038596	
17,600.00	90.00	180.32	7,304.00	-10,127.36	1,237.15	1,280,850.431	3,129,066.433	40.103405	-105.038600	
17,800.00	90.00	180.32	7,304.00	-10,327.35	1,236.01	1,280,650.431	3,129,066.330	40.102856	-105.038604	
18,000.00	90.00	180.32	7,304.00	-10,527.35	1,234.88	1,280,450.431	3,129,066.227	40.102307	-105.038608	
18,200.00	90.00	180.32	7,304.00	-10,727.35	1,233.75	1,280,250.431	3,129,066.124	40.101758	-105.038612	
18,400.00	90.00	180.32	7,304.00	-10,927.34	1,232.61	1,280,050.431	3,129,066.021	40.101209	-105.038616	
18,600.00	90.00	180.32	7,304.00	-11,127.34	1,231.48	1,279,850.431	3,129,065.918	40.100660	-105.038620	
18,800.00	90.00	180.32	7,304.00	-11,327.34	1,230.35	1,279,650.431	3,129,065.815	40.100111	-105.038624	
19,000.00	90.00	180.32	7,304.00	-11,527.34	1,229.21	1,279,450.431	3,129,065.712	40.099562	-105.038628	

Database:	EDM 5000.14 Single User Db	Local Co-ordinate Reference:	Well REGNIER FARMS 11-19H-B268
Company:	Crestone Peak Resources	TVD Reference:	WELL @ 4988.00usft (Original Well Elev)
Project:	Sec 19 T2N-R68W	MD Reference:	WELL @ 4988.00usft (Original Well Elev)
Site:	Regnier Farms Pad	North Reference:	True
Well:	REGNIER FARMS 11-19H-B268	Survey Calculation Method:	Minimum Curvature
Wellbore:	Wellbore #1		
Design:	Design #1 22Mar18 kjs		

Planned Survey									
Measured Depth (usft)	Inclination (°)	Azimuth (°)	Vertical Depth (usft)	+N/-S (usft)	+E/-W (usft)	Map Northing (usft)	Map Easting (usft)	Latitude	Longitude
19,200.00	90.00	180.32	7,304.00	-11,727.33	1,228.08	1,279,250.431	3,129,065.609	40.099013	-105.038632
19,400.00	90.00	180.32	7,304.00	-11,927.33	1,226.94	1,279,050.431	3,129,065.506	40.098464	-105.038637
19,600.00	90.00	180.32	7,304.00	-12,127.33	1,225.81	1,278,850.431	3,129,065.403	40.097914	-105.038641
19,800.00	90.00	180.32	7,304.00	-12,327.32	1,224.68	1,278,650.431	3,129,065.300	40.097365	-105.038645
20,000.00	90.00	180.32	7,304.00	-12,527.32	1,223.54	1,278,450.431	3,129,065.197	40.096816	-105.038649
20,200.00	90.00	180.32	7,304.00	-12,727.32	1,222.41	1,278,250.431	3,129,065.094	40.096267	-105.038653
20,400.00	90.00	180.32	7,304.00	-12,927.31	1,221.28	1,278,050.431	3,129,064.991	40.095718	-105.038657
20,600.00	90.00	180.32	7,304.00	-13,127.31	1,220.14	1,277,850.431	3,129,064.888	40.095169	-105.038661
20,800.00	90.00	180.32	7,304.00	-13,327.31	1,219.01	1,277,650.431	3,129,064.785	40.094620	-105.038665
21,000.00	90.00	180.32	7,304.00	-13,527.30	1,217.87	1,277,450.432	3,129,064.682	40.094071	-105.038669
21,200.00	90.00	180.32	7,304.00	-13,727.30	1,216.74	1,277,250.432	3,129,064.580	40.093522	-105.038673
21,400.00	90.00	180.32	7,304.00	-13,927.30	1,215.61	1,277,050.432	3,129,064.477	40.092973	-105.038677
21,600.00	90.00	180.32	7,304.00	-14,127.29	1,214.47	1,276,850.432	3,129,064.374	40.092424	-105.038682
21,800.00	90.00	180.32	7,304.00	-14,327.29	1,213.34	1,276,650.432	3,129,064.271	40.091875	-105.038686
22,000.00	90.00	180.32	7,304.00	-14,527.29	1,212.21	1,276,450.432	3,129,064.168	40.091326	-105.038690
22,200.00	90.00	180.32	7,304.00	-14,727.28	1,211.07	1,276,250.432	3,129,064.065	40.090777	-105.038694
22,400.00	90.00	180.32	7,304.00	-14,927.28	1,209.94	1,276,050.432	3,129,063.962	40.090228	-105.038698
22,600.00	90.00	180.32	7,304.00	-15,127.28	1,208.81	1,275,850.432	3,129,063.859	40.089679	-105.038702
22,800.00	90.00	180.32	7,304.00	-15,327.27	1,207.67	1,275,650.432	3,129,063.756	40.089130	-105.038706
22,843.03	90.00	180.32	7,304.00	-15,370.30	1,207.43	1,275,607.406	3,129,063.733	40.089012	-105.038707
TD at 22843.03									

Design Targets									
Target Name	Dip Angle (°)	Dip Dir. (°)	TVD (usft)	+N/-S (usft)	+E/-W (usft)	Northing (usft)	Easting (usft)	Latitude	Longitude
- hit/miss target									
- Shape									
REGNIER FARMS 11-19	0.00	0.00	7,304.00	-15,370.30	1,207.43	1,275,607.406	3,129,063.733	40.089012	-105.038707
- plan hits target center									
- Point									
REGNIER FARMS 11-19	0.00	0.00	7,304.00	-355.00	1,211.47	1,290,622.521	3,128,990.394	40.130231	-105.038690
- plan hits target center									
- Point									

Plan Annotations				
Measured Depth (usft)	Vertical Depth (usft)	Local Coordinates		Comment
		+N/-S (usft)	+E/-W (usft)	
225.00	225.00	0.00	0.00	Start Build 2.00
752.48	749.51	15.36	45.92	Hold 10.55 Inc, 71.5 Az
6,661.98	6,559.11	358.64	1,071.98	KOP 8/100
7,827.30	7,304.00	-355.00	1,211.47	LP 90 Inc, 179.4 Az
12,827.30	7,304.00	-5,354.73	1,263.83	Start Turn 2/100
12,873.54	7,304.00	-5,400.97	1,263.94	Hold 180.32 Az
22,843.03	7,304.00	-15,370.30	1,207.43	TD at 22843.03