



Crestone Peak Resources

Well Name:

REGNIER FARMS 1A-19H-B268

Project Name:

Sec 19 T2N-R68W

Pad Name:

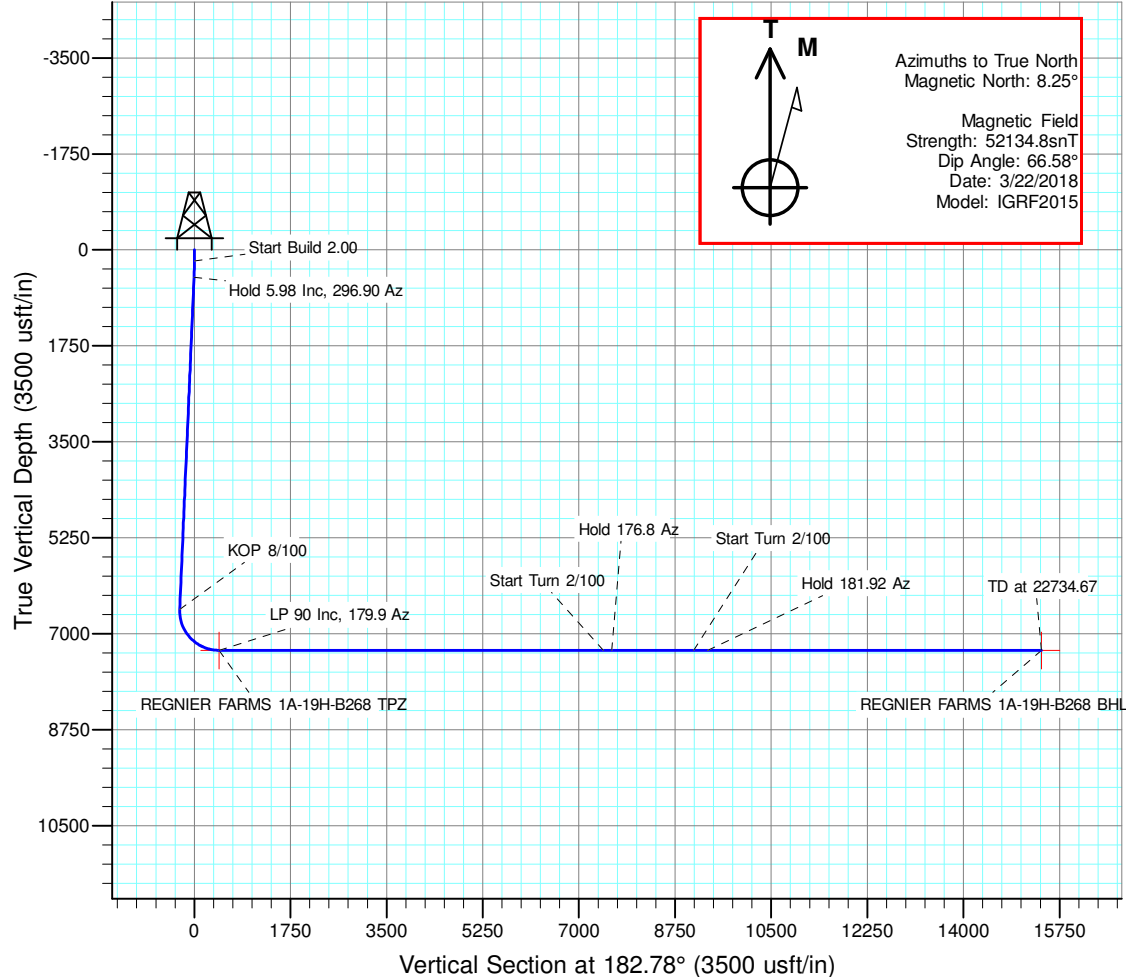
Regnier Farms Pad

ANNOTATIONS

MD	Inc	Azi	TVD	+N/-S	+E/-W	Vsect	Departure	Annotation
200.00	0.00	0.00	200.00	0.00	0.00	0.00	0.00	Start Build 2.00
499.25	5.98	296.90	498.71	7.06	-13.93	-6.38	15.62	Hold 5.98 Inc, 296.90 Az
6590.90	5.98	296.90	6557.15	294.39	-580.38	-265.86	650.78	KOP 8/100
7749.81	90.00	179.90	7304.00	-421.12	-648.90	452.13	1380.77	LP 90 Inc, 179.9 Az
14749.81	90.00	179.90	7304.00	-7421.11	-636.68	7443.27	8380.77	Start Turn 2/100
14904.81	90.00	176.80	7304.00	-7576.03	-632.22	7597.79	8535.77	Hold 176.8 Az
16404.81	90.00	176.80	7304.00	-9073.69	-548.49	9089.62	10035.77	Start Turn 2/100
16660.59	90.00	181.92	7304.00	-9329.37	-545.62	9344.86	10291.55	Hold 181.92 Az
22734.67	90.00	181.92	7304.00	-15400.05	-748.65	15418.24	16364.63	TD at 22734.67

DESIGN TARGET DETAILS

Name	TVD	+N/-S	+E/-W	Northing	Easting	Latitude	Longitude	Shape
REGNIER FARMS 1A-19H-B268 BHL	7304.00	-15400.05	-748.65	1275564.112	3127027.858	40.088922	-105.045984	Point
REGNIER FARMS 1A-19H-B268 TPZ	7304.00	-421.13	-648.90	1290543.354	3127050.464	40.130041	-105.045629	Point

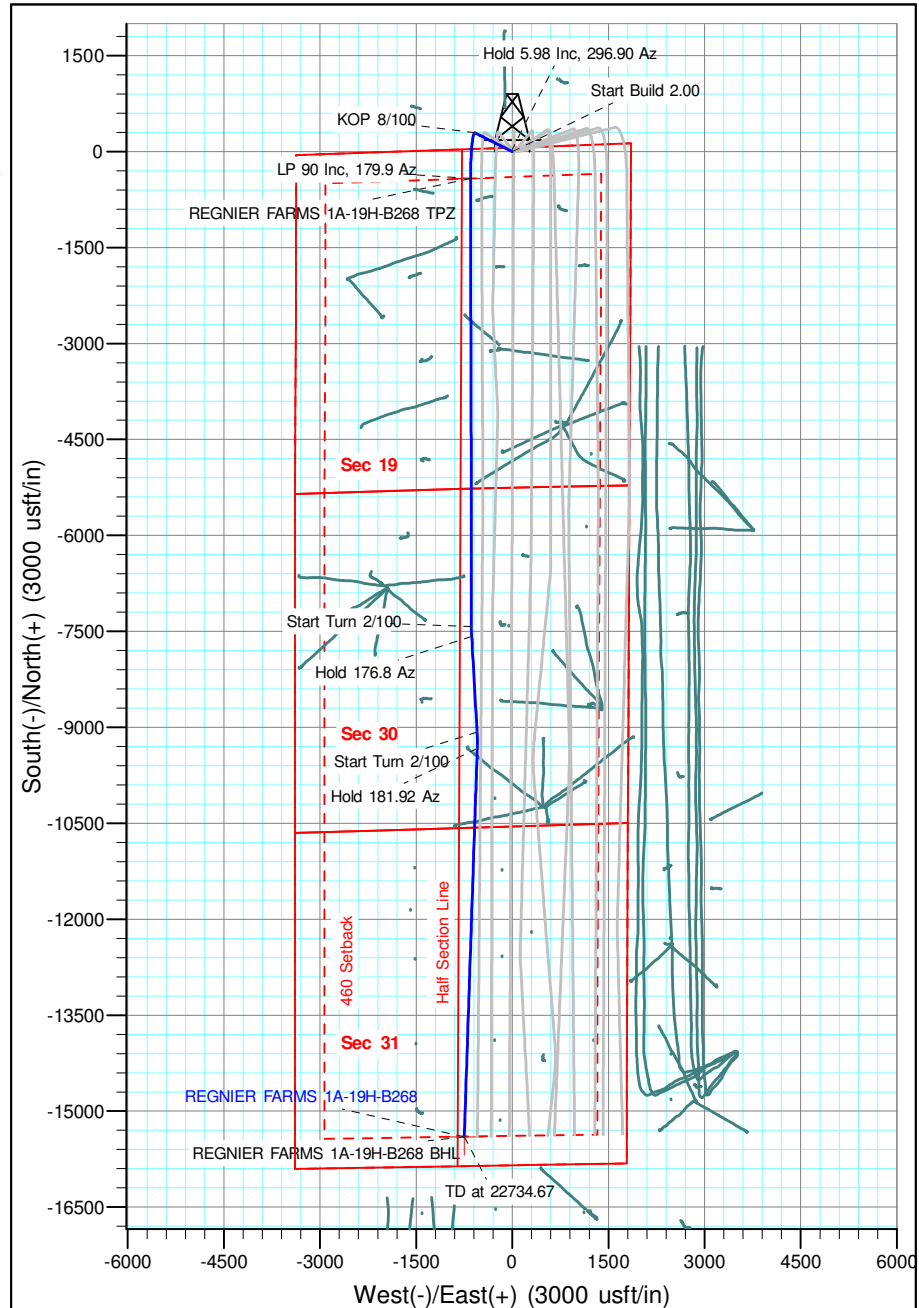


Geodetic Datum:

North American Datum 1983
US State Plane 1983, Colorado Northern Zone

Elevation:

Ground Elevation: 4966.00
KB Elevation: WELL @ 4989.00usft (Original Well Elev)





Crestone Peak Resources

Sec 19 T2N-R68W

Regnier Farms Pad

REGNIER FARMS 1A-19H-B268

Wellbore #1

Plan: Design #1 22Mar18 kjs

Standard Planning Report - Geographic

03 April, 2018

Database:	EDM 5000.14 Single User Db	Local Co-ordinate Reference:	Well REGNIER FARMS 1A-19H-B268
Company:	Crestone Peak Resources	TVD Reference:	WELL @ 4989.00usft (Original Well Elev)
Project:	Sec 19 T2N-R68W	MD Reference:	WELL @ 4989.00usft (Original Well Elev)
Site:	Regnier Farms Pad	North Reference:	True
Well:	REGNIER FARMS 1A-19H-B268	Survey Calculation Method:	Minimum Curvature
Wellbore:	Wellbore #1		
Design:	Design #1 22Mar18 kjs		

Project	Sec 19 T2N-R68W, Weld County, CO		
Map System:	US State Plane 1983	System Datum:	Mean Sea Level
Geo Datum:	North American Datum 1983		
Map Zone:	Colorado Northern Zone		

Site		Regnier Farms Pad			
Site Position:		Northing:	1,290,967.816 usft	Latitude:	40.131198
From:	Map	Easting:	3,127,697.187 usft	Longitude:	-105.043308
Position Uncertainty:	0.00 usft	Slot Radius:	13-3/16 "	Grid Convergence:	0.30 °

Well	REGNIER FARMS 1A-19H-B268					
Well Position	+N/-S	0.00 usft	Northing:	1,290,967.816 usft	Latitude:	40.131197
	+E/-W	0.00 usft	Easting:	3,127,697.187 usft	Longitude:	-105.043308
Position Uncertainty		0.00 usft	Wellhead Elevation:		Ground Level:	4,966.00 usft

Wellbore	Wellbore #1				
Magnetics	Model Name	Sample Date	Declination (°)	Dip Angle (°)	Field Strength (nT)
	IGRF2015	3/22/2018	8.25	66.58	52,134.83399949

Design	Design #1 22Mar18 kjs				
Audit Notes:					
Version:		Phase:	PLAN	Tie On Depth:	0.00
Vertical Section:	Depth From (TVD) (usft)	+N/-S (usft)	+E/-W (usft)	Direction (°)	
	0.00	0.00	0.00	182.78	

Plan Survey Tool Program	Date	4/2/2018			
Depth From (usft)	Depth To (usft)	Survey (Wellbore)	Tool Name	Remarks	
1	0.00	22,734.14 Design #1 22Mar18 kjs (Wellbore)	MWD OWSG MWD - Standard		

Database:	EDM 5000.14 Single User Db	Local Co-ordinate Reference:	Well REGNIER FARMS 1A-19H-B268
Company:	Crestone Peak Resources	TVD Reference:	WELL @ 4989.00usft (Original Well Elev)
Project:	Sec 19 T2N-R68W	MD Reference:	WELL @ 4989.00usft (Original Well Elev)
Site:	Regnier Farms Pad	North Reference:	True
Well:	REGNIER FARMS 1A-19H-B268	Survey Calculation Method:	Minimum Curvature
Wellbore:	Wellbore #1		
Design:	Design #1 22Mar18 kjs		

Plan Sections										
Measured Depth (usft)	Inclination (°)	Azimuth (°)	Vertical Depth (usft)	+N/-S (usft)	+E/-W (usft)	Dogleg Rate (°/100usft)	Build Rate (°/100usft)	Turn Rate (°/100usft)	TFO (°)	Target
0.00	0.00	0.00	0.00	0.00	0.00	0.00	0.00	0.00	0.00	
200.00	0.00	0.00	200.00	0.00	0.00	0.00	0.00	0.00	0.00	
499.25	5.98	296.90	498.70	7.06	-13.93	2.00	2.00	0.00	296.90	
6,590.90	5.98	296.90	6,557.16	294.39	-580.38	0.00	0.00	0.00	0.00	
7,749.81	90.00	179.90	7,304.00	-421.13	-648.90	8.00	7.25	-10.10	-116.87	REGNIER FARMS 1A
14,749.81	90.00	179.90	7,304.00	-7,421.12	-636.68	0.00	0.00	0.00	0.00	
14,904.81	90.00	176.80	7,304.00	-7,576.03	-632.22	2.00	0.00	-2.00	-90.00	
16,404.82	90.00	176.80	7,304.00	-9,073.69	-548.49	0.00	0.00	0.00	0.00	
16,660.59	90.00	181.92	7,304.00	-9,329.37	-545.62	2.00	0.00	2.00	90.00	
22,734.67	90.00	181.92	7,304.00	-15,400.05	-748.65	0.00	0.00	0.00	0.00	REGNIER FARMS 1A

Database:	EDM 5000.14 Single User Db	Local Co-ordinate Reference:	Well REGNIER FARMS 1A-19H-B268
Company:	Crestone Peak Resources	TVD Reference:	WELL @ 4989.00usft (Original Well Elev)
Project:	Sec 19 T2N-R68W	MD Reference:	WELL @ 4989.00usft (Original Well Elev)
Site:	Regnier Farms Pad	North Reference:	True
Well:	REGNIER FARMS 1A-19H-B268	Survey Calculation Method:	Minimum Curvature
Wellbore:	Wellbore #1		
Design:	Design #1 22Mar18 kjs		

Planned Survey									
Measured Depth (usft)	Inclination (°)	Azimuth (°)	Vertical Depth (usft)	+N/-S (usft)	+E/-W (usft)	Map Northing (usft)	Map Easting (usft)	Latitude	Longitude
0.00	0.00	0.00	0.00	0.00	0.00	1,290,967.816	3,127,697.187	40.131198	-105.043308
200.00	0.00	0.00	200.00	0.00	0.00	1,290,967.816	3,127,697.187	40.131198	-105.043308
Start Build 2.00									
400.00	4.00	296.90	399.84	3.16	-6.22	1,290,970.940	3,127,690.948	40.131206	-105.043331
499.25	5.98	296.90	498.71	7.06	-13.93	1,290,974.808	3,127,683.225	40.131217	-105.043358
Hold 5.98 Inc, 296.90 Az									
600.00	5.98	296.90	598.91	11.82	-23.29	1,290,979.511	3,127,673.832	40.131230	-105.043392
800.00	5.98	296.90	797.82	21.25	-41.89	1,290,988.849	3,127,655.186	40.131256	-105.043458
1,000.00	5.98	296.90	996.73	30.68	-60.49	1,290,998.187	3,127,636.540	40.131282	-105.043525
1,200.00	5.98	296.90	1,195.64	40.12	-79.09	1,291,007.524	3,127,617.894	40.131308	-105.043591
1,400.00	5.98	296.90	1,394.55	49.55	-97.69	1,291,016.862	3,127,599.248	40.131334	-105.043658
1,600.00	5.98	296.90	1,593.46	58.98	-116.28	1,291,026.199	3,127,580.601	40.131359	-105.043724
1,800.00	5.98	296.90	1,792.37	68.42	-134.88	1,291,035.537	3,127,561.955	40.131385	-105.043791
2,000.00	5.98	296.90	1,991.28	77.85	-153.48	1,291,044.874	3,127,543.309	40.131411	-105.043857
2,200.00	5.98	296.90	2,190.19	87.28	-172.08	1,291,054.212	3,127,524.663	40.131437	-105.043924
2,400.00	5.98	296.90	2,389.10	96.72	-190.67	1,291,063.549	3,127,506.017	40.131463	-105.043990
2,600.00	5.98	296.90	2,588.01	106.15	-209.27	1,291,072.887	3,127,487.371	40.131489	-105.044057
2,800.00	5.98	296.90	2,786.92	115.58	-227.87	1,291,082.224	3,127,468.725	40.131515	-105.044123
3,000.00	5.98	296.90	2,985.83	125.02	-246.47	1,291,091.562	3,127,450.079	40.131541	-105.044190
3,200.00	5.98	296.90	3,184.74	134.45	-265.07	1,291,100.899	3,127,431.433	40.131567	-105.044256
3,400.00	5.98	296.90	3,383.65	143.88	-283.66	1,291,110.237	3,127,412.786	40.131593	-105.044323
3,600.00	5.98	296.90	3,582.55	153.32	-302.26	1,291,119.574	3,127,394.140	40.131618	-105.044389
3,800.00	5.98	296.90	3,781.46	162.75	-320.86	1,291,128.912	3,127,375.494	40.131644	-105.044456
4,000.00	5.98	296.90	3,980.37	172.18	-339.46	1,291,138.249	3,127,356.848	40.131670	-105.044522
4,200.00	5.98	296.90	4,179.28	181.62	-358.05	1,291,147.587	3,127,338.202	40.131696	-105.044589
4,400.00	5.98	296.90	4,378.19	191.05	-376.65	1,291,156.924	3,127,319.556	40.131722	-105.044655
4,600.00	5.98	296.90	4,577.10	200.48	-395.25	1,291,166.262	3,127,300.910	40.131748	-105.044722
4,800.00	5.98	296.90	4,776.01	209.92	-413.85	1,291,175.599	3,127,282.264	40.131774	-105.044788
5,000.00	5.98	296.90	4,974.92	219.35	-432.45	1,291,184.937	3,127,263.618	40.131800	-105.044855
5,200.00	5.98	296.90	5,173.83	228.78	-451.04	1,291,194.274	3,127,244.971	40.131826	-105.044921
5,400.00	5.98	296.90	5,372.74	238.22	-469.64	1,291,203.612	3,127,226.325	40.131851	-105.044988
5,600.00	5.98	296.90	5,571.65	247.65	-488.24	1,291,212.949	3,127,207.679	40.131877	-105.045054
5,800.00	5.98	296.90	5,770.56	257.08	-506.84	1,291,222.287	3,127,189.033	40.131903	-105.045121
6,000.00	5.98	296.90	5,969.47	266.52	-525.43	1,291,231.624	3,127,170.387	40.131929	-105.045187
6,200.00	5.98	296.90	6,168.38	275.95	-544.03	1,291,240.962	3,127,151.741	40.131955	-105.045254
6,400.00	5.98	296.90	6,367.29	285.39	-562.63	1,291,250.299	3,127,133.095	40.131981	-105.045321
6,590.90	5.98	296.90	6,557.15	294.39	-580.38	1,291,259.212	3,127,115.297	40.132006	-105.045384
KOP 8/100									
6,600.00	5.69	290.34	6,566.21	294.76	-581.23	1,291,259.579	3,127,114.449	40.132007	-105.045387
6,800.00	14.98	200.34	6,763.60	273.84	-599.63	1,291,238.564	3,127,096.154	40.131949	-105.045453
7,000.00	30.44	189.05	6,947.61	199.08	-616.69	1,291,163.721	3,127,079.480	40.131744	-105.045514
7,200.00	46.25	185.03	7,103.99	76.29	-631.08	1,291,040.850	3,127,065.718	40.131407	-105.045565
7,400.00	62.15	182.73	7,220.62	-85.04	-641.70	1,290,879.470	3,127,055.936	40.130964	-105.045603
7,600.00	78.07	181.03	7,288.46	-272.40	-647.71	1,290,692.085	3,127,050.891	40.130450	-105.045625
7,749.81	90.00	179.90	7,304.00	-421.12	-648.90	1,290,543.358	3,127,050.464	40.130041	-105.045629
LP 90 Inc, 179.9 Az									
7,800.00	90.00	179.90	7,304.00	-471.31	-648.81	1,290,493.170	3,127,050.811	40.129904	-105.045629
8,000.00	90.00	179.90	7,304.00	-671.31	-648.46	1,290,293.174	3,127,052.190	40.129355	-105.045627
8,200.00	90.00	179.90	7,304.00	-871.31	-648.11	1,290,093.179	3,127,053.569	40.128806	-105.045626
8,400.00	90.00	179.90	7,304.00	-1,071.31	-647.77	1,289,893.184	3,127,054.948	40.128257	-105.045625
8,600.00	90.00	179.90	7,304.00	-1,271.31	-647.42	1,289,693.189	3,127,056.327	40.127708	-105.045624
8,800.00	90.00	179.90	7,304.00	-1,471.31	-647.07	1,289,493.193	3,127,057.706	40.127159	-105.045622
9,000.00	90.00	179.90	7,304.00	-1,671.31	-646.72	1,289,293.198	3,127,059.085	40.126610	-105.045621
9,200.00	90.00	179.90	7,304.00	-1,871.31	-646.37	1,289,093.203	3,127,060.464	40.126061	-105.045620

Database:	EDM 5000.14 Single User Db	Local Co-ordinate Reference:	Well REGNIER FARMS 1A-19H-B268
Company:	Crestone Peak Resources	TVD Reference:	WELL @ 4989.00usft (Original Well Elev)
Project:	Sec 19 T2N-R68W	MD Reference:	WELL @ 4989.00usft (Original Well Elev)
Site:	Regnier Farms Pad	North Reference:	True
Well:	REGNIER FARMS 1A-19H-B268	Survey Calculation Method:	Minimum Curvature
Wellbore:	Wellbore #1		
Design:	Design #1 22Mar18 kjs		

Planned Survey									
Measured Depth (usft)	Inclination (°)	Azimuth (°)	Vertical Depth (usft)	+N/-S (usft)	+E/-W (usft)	Map Northing (usft)	Map Easting (usft)	Latitude	Longitude
9,400.00	90.00	179.90	7,304.00	-2,071.31	-646.02	1,288,893.208	3,127,061.843	40.125511	-105.045619
9,600.00	90.00	179.90	7,304.00	-2,271.31	-645.67	1,288,693.212	3,127,063.222	40.124962	-105.045617
9,800.00	90.00	179.90	7,304.00	-2,471.31	-645.32	1,288,493.217	3,127,064.601	40.124413	-105.045616
10,000.00	90.00	179.90	7,304.00	-2,671.31	-644.97	1,288,293.222	3,127,065.981	40.123864	-105.045615
10,200.00	90.00	179.90	7,304.00	-2,871.31	-644.62	1,288,093.227	3,127,067.360	40.123315	-105.045613
10,400.00	90.00	179.90	7,304.00	-3,071.31	-644.28	1,287,893.231	3,127,068.739	40.122766	-105.045612
10,600.00	90.00	179.90	7,304.00	-3,271.31	-643.93	1,287,693.236	3,127,070.118	40.122217	-105.045611
10,800.00	90.00	179.90	7,304.00	-3,471.31	-643.58	1,287,493.241	3,127,071.497	40.121668	-105.045610
11,000.00	90.00	179.90	7,304.00	-3,671.31	-643.23	1,287,293.246	3,127,072.876	40.121119	-105.045608
11,200.00	90.00	179.90	7,304.00	-3,871.31	-642.88	1,287,093.251	3,127,074.255	40.120570	-105.045607
11,400.00	90.00	179.90	7,304.00	-4,071.31	-642.53	1,286,893.255	3,127,075.634	40.120021	-105.045606
11,600.00	90.00	179.90	7,304.00	-4,271.31	-642.18	1,286,693.260	3,127,077.013	40.119472	-105.045605
11,800.00	90.00	179.90	7,304.00	-4,471.30	-641.83	1,286,493.265	3,127,078.392	40.118923	-105.045603
12,000.00	90.00	179.90	7,304.00	-4,671.30	-641.48	1,286,293.270	3,127,079.771	40.118374	-105.045602
12,200.00	90.00	179.90	7,304.00	-4,871.30	-641.13	1,286,093.274	3,127,081.151	40.117825	-105.045601
12,400.00	90.00	179.90	7,304.00	-5,071.30	-640.78	1,285,893.279	3,127,082.530	40.117276	-105.045600
12,600.00	90.00	179.90	7,304.00	-5,271.30	-640.44	1,285,693.284	3,127,083.909	40.116727	-105.045598
12,800.00	90.00	179.90	7,304.00	-5,471.30	-640.09	1,285,493.289	3,127,085.288	40.116178	-105.045597
13,000.00	90.00	179.90	7,304.00	-5,671.30	-639.74	1,285,293.293	3,127,086.667	40.115629	-105.045596
13,200.00	90.00	179.90	7,304.00	-5,871.30	-639.39	1,285,093.298	3,127,088.046	40.115080	-105.045594
13,400.00	90.00	179.90	7,304.00	-6,071.30	-639.04	1,284,893.303	3,127,089.425	40.114531	-105.045593
13,600.00	90.00	179.90	7,304.00	-6,271.30	-638.69	1,284,693.308	3,127,090.804	40.113982	-105.045592
13,800.00	90.00	179.90	7,304.00	-6,471.30	-638.34	1,284,493.312	3,127,092.183	40.113433	-105.045591
14,000.00	90.00	179.90	7,304.00	-6,671.30	-637.99	1,284,293.317	3,127,093.562	40.112884	-105.045589
14,200.00	90.00	179.90	7,304.00	-6,871.30	-637.64	1,284,093.322	3,127,094.941	40.112335	-105.045588
14,400.00	90.00	179.90	7,304.00	-7,071.30	-637.29	1,283,893.327	3,127,096.321	40.111786	-105.045587
14,600.00	90.00	179.90	7,304.00	-7,271.30	-636.94	1,283,693.332	3,127,097.700	40.111237	-105.045586
14,749.81	90.00	179.90	7,304.00	-7,421.11	-636.68	1,283,543.525	3,127,098.733	40.110825	-105.045585
Start Turn 2/100									
14,800.00	90.00	178.90	7,304.00	-7,471.30	-636.16	1,283,493.342	3,127,099.518	40.110688	-105.045583
14,904.81	90.00	176.80	7,304.00	-7,576.03	-632.22	1,283,388.633	3,127,103.993	40.110400	-105.045569
Hold 176.8 Az									
15,000.00	90.00	176.80	7,304.00	-7,671.07	-626.91	1,283,293.620	3,127,109.796	40.110139	-105.045550
15,200.00	90.00	176.80	7,304.00	-7,870.76	-615.74	1,283,093.992	3,127,121.988	40.109591	-105.045510
15,400.00	90.00	176.80	7,304.00	-8,070.45	-604.58	1,282,894.364	3,127,134.181	40.109043	-105.045470
15,600.00	90.00	176.80	7,304.00	-8,270.13	-593.41	1,282,694.736	3,127,146.374	40.108495	-105.045430
15,800.00	90.00	176.80	7,304.00	-8,469.82	-582.25	1,282,495.108	3,127,158.566	40.107947	-105.045390
16,000.00	90.00	176.80	7,304.00	-8,669.51	-571.09	1,282,295.480	3,127,170.759	40.107398	-105.045350
16,200.00	90.00	176.80	7,304.00	-8,869.20	-559.92	1,282,095.852	3,127,182.951	40.106850	-105.045310
16,400.00	90.00	176.80	7,304.00	-9,068.89	-548.76	1,281,896.224	3,127,195.144	40.106302	-105.045270
16,404.81	90.00	176.80	7,304.00	-9,073.69	-548.49	1,281,891.423	3,127,195.437	40.106289	-105.045269
Start Turn 2/100									
16,600.00	90.00	180.70	7,304.00	-9,268.79	-544.24	1,281,696.342	3,127,200.693	40.105753	-105.045254
16,660.59	90.00	181.92	7,304.00	-9,329.37	-545.62	1,281,635.763	3,127,199.620	40.105587	-105.045259
Hold 181.92 Az									
16,800.00	90.00	181.92	7,304.00	-9,468.70	-550.28	1,281,496.408	3,127,195.678	40.105205	-105.045276
17,000.00	90.00	181.92	7,304.00	-9,668.59	-556.97	1,281,296.488	3,127,190.022	40.104656	-105.045299
17,200.00	90.00	181.92	7,304.00	-9,868.48	-563.65	1,281,096.568	3,127,184.367	40.104107	-105.045323
17,400.00	90.00	181.92	7,304.00	-10,068.36	-570.34	1,280,896.648	3,127,178.711	40.103558	-105.045347
17,600.00	90.00	181.92	7,304.00	-10,268.25	-577.02	1,280,696.728	3,127,173.056	40.103010	-105.045371
17,800.00	90.00	181.92	7,304.00	-10,468.14	-583.71	1,280,496.808	3,127,167.400	40.102461	-105.045395
18,000.00	90.00	181.92	7,304.00	-10,668.03	-590.39	1,280,296.888	3,127,161.745	40.101912	-105.045419
18,200.00	90.00	181.92	7,304.00	-10,867.92	-597.08	1,280,096.968	3,127,156.089	40.101363	-105.045443
18,400.00	90.00	181.92	7,304.00	-11,067.81	-603.76	1,279,897.048	3,127,150.433	40.100815	-105.045467

Database:	EDM 5000.14 Single User Db	Local Co-ordinate Reference:	Well REGNIER FARMS 1A-19H-B268
Company:	Crestone Peak Resources	TVD Reference:	WELL @ 4989.00usft (Original Well Elev)
Project:	Sec 19 T2N-R68W	MD Reference:	WELL @ 4989.00usft (Original Well Elev)
Site:	Regnier Farms Pad	North Reference:	True
Well:	REGNIER FARMS 1A-19H-B268	Survey Calculation Method:	Minimum Curvature
Wellbore:	Wellbore #1		
Design:	Design #1 22Mar18 kjs		

Planned Survey									
Measured Depth (usft)	Inclination (°)	Azimuth (°)	Vertical Depth (usft)	+N/-S (usft)	+E/-W (usft)	Map Northing (usft)	Map Easting (usft)	Latitude	Longitude
18,600.00	90.00	181.92	7,304.00	-11,267.69	-610.45	1,279,697.128	3,127,144.778	40.100266	-105.045491
18,800.00	90.00	181.92	7,304.00	-11,467.58	-617.13	1,279,497.208	3,127,139.122	40.099717	-105.045514
19,000.00	90.00	181.92	7,304.00	-11,667.47	-623.82	1,279,297.288	3,127,133.467	40.099169	-105.045538
19,200.00	90.00	181.92	7,304.00	-11,867.36	-630.50	1,279,097.368	3,127,127.811	40.098620	-105.045562
19,400.00	90.00	181.92	7,304.00	-12,067.25	-637.19	1,278,897.448	3,127,122.156	40.098071	-105.045586
19,600.00	90.00	181.92	7,304.00	-12,267.14	-643.87	1,278,697.528	3,127,116.500	40.097522	-105.045610
19,800.00	90.00	181.92	7,304.00	-12,467.02	-650.56	1,278,497.608	3,127,110.844	40.096974	-105.045634
20,000.00	90.00	181.92	7,304.00	-12,666.91	-657.24	1,278,297.688	3,127,105.189	40.096425	-105.045658
20,200.00	90.00	181.92	7,304.00	-12,866.80	-663.93	1,278,097.768	3,127,099.533	40.095876	-105.045682
20,400.00	90.00	181.92	7,304.00	-13,066.69	-670.61	1,277,897.848	3,127,093.878	40.095327	-105.045705
20,600.00	90.00	181.92	7,304.00	-13,266.58	-677.30	1,277,697.928	3,127,088.222	40.094779	-105.045729
20,800.00	90.00	181.92	7,304.00	-13,466.46	-683.98	1,277,498.008	3,127,082.567	40.094230	-105.045753
21,000.00	90.00	181.92	7,304.00	-13,666.35	-690.67	1,277,298.088	3,127,076.911	40.093681	-105.045777
21,200.00	90.00	181.92	7,304.00	-13,866.24	-697.35	1,277,098.168	3,127,071.256	40.093133	-105.045801
21,400.00	90.00	181.92	7,304.00	-14,066.13	-704.04	1,276,898.248	3,127,065.600	40.092584	-105.045825
21,600.00	90.00	181.92	7,304.00	-14,266.02	-710.72	1,276,698.328	3,127,059.944	40.092035	-105.045849
21,800.00	90.00	181.92	7,304.00	-14,465.91	-717.41	1,276,498.408	3,127,054.289	40.091486	-105.045873
22,000.00	90.00	181.92	7,304.00	-14,665.79	-724.10	1,276,298.488	3,127,048.633	40.090938	-105.045896
22,200.00	90.00	181.92	7,304.00	-14,865.68	-730.78	1,276,098.568	3,127,042.978	40.090389	-105.045920
22,400.00	90.00	181.92	7,304.00	-15,065.57	-737.47	1,275,898.648	3,127,037.322	40.089840	-105.045944
22,600.00	90.00	181.92	7,304.00	-15,265.46	-744.15	1,275,698.728	3,127,031.667	40.089292	-105.045968
22,734.67	90.00	181.92	7,304.00	-15,400.05	-748.65	1,275,564.112	3,127,027.858	40.088922	-105.045984
TD at 22734.67									

Design Targets									
Target Name	Dip Angle (°)	Dip Dir. (°)	TVD (usft)	+N/-S (usft)	+E/-W (usft)	Northing (usft)	Easting (usft)	Latitude	Longitude
REGNIER FARMS 1A-1'	0.00	0.00	7,304.00	-421.13	-648.90	1,290,543.354	3,127,050.464	40.130041	-105.045629
- hit/miss target									
- Shape									
- Point									
REGNIER FARMS 1A-1'	0.00	0.00	7,304.00	-15,400.05	-748.65	1,275,564.112	3,127,027.858	40.088922	-105.045984
- plan hits target center									
- Point									

Plan Annotations					
Measured Depth (usft)	Vertical Depth (usft)	Local Coordinates			
		+N/-S (usft)	+E/-W (usft)	Comment	
200.00	200.00	0.00	0.00	Start Build 2.00	
499.25	498.71	7.06	-13.93	Hold 5.98 Inc, 296.90 Az	
6,590.90	6,557.15	294.39	-580.38	KOP 8/100	
7,749.81	7,304.00	-421.12	-648.90	LP 90 Inc, 179.9 Az	
14,749.81	7,304.00	-7,421.11	-636.68	Start Turn 2/100	
14,904.81	7,304.00	-7,576.03	-632.22	Hold 176.8 Az	
16,404.81	7,304.00	-9,073.69	-548.49	Start Turn 2/100	
16,660.59	7,304.00	-9,329.37	-545.62	Hold 181.92 Az	
22,734.67	7,304.00	-15,400.05	-748.65	TD at 22734.67	