



Crestone Peak Resources

Well Name:

REGNIER FARMS 1J-19H-B268

Project Name:

Sec 19 T2N-R68W

Pad Name:

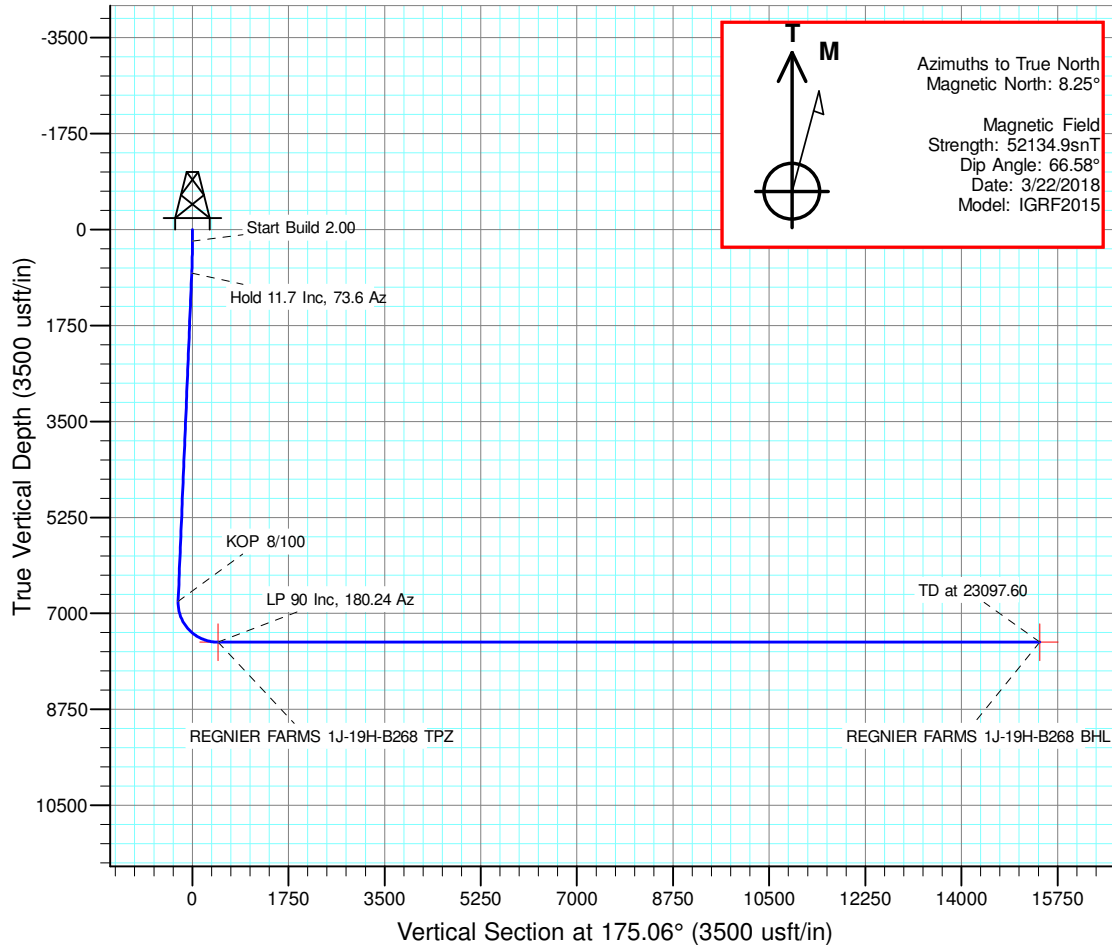
Regnier Farms Pad

ANNOTATIONS

MD	Inc	Azi	TVD	+N/-S	+E/-W	Vsect	Departure	Annotation
210.00	0.00	0.00	210.00	0.00	0.00	0.00	0.00	Start Build 2.00
795.09	11.70	73.60	791.03	16.81	57.12	-11.83	59.54	Hold 11.7 Inc, 73.6 Az
6910.86	11.70	73.60	6779.69	367.00	1247.05	-258.33	1299.93	KOP 8/100
8077.49	90.00	180.24	7523.00	-348.61	1391.51	467.06	2059.28	LP 90 Inc, 180.24 Az
23097.60	90.00	180.24	7523.00	-15368.59	1327.43	15425.81	17078.39	TD at 23097.60

DESIGN TARGET DETAILS

Name	TVD	+N/-S	+E/-W	Northing	Easting	Latitude	Longitude	Shape
REGNIER FARMS 1J-19H-B268 BHL	7523.00	-15368.59	1327.43	1275610.170	3129193.725	40.089018	-105.038242	Point
REGNIER FARMS 1J-19H-B268 TPZ	7523.00	-348.61	1391.51	1290630.275	3129180.387	40.130250	-105.038010	Point

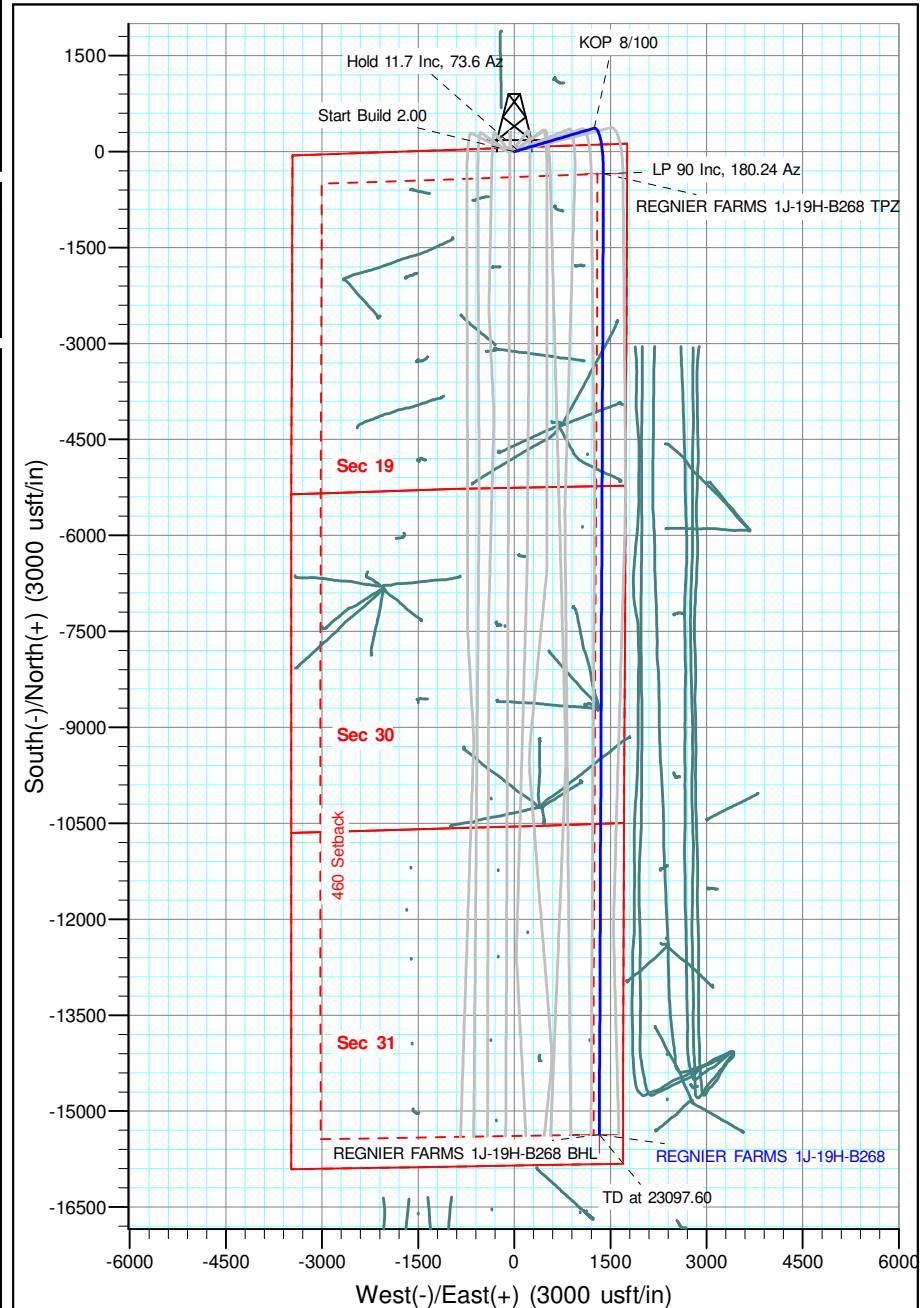


Geodetic Datum:

North American Datum 1983
US State Plane 1983, Colorado Northern Zone

Elevation:

Ground Elevation: 4965.00
KB Elevation: WELL @ 4988.00usft (Original Well Elev)





Crestone Peak Resources

Sec 19 T2N-R68W

Regnier Farms Pad

REGNIER FARMS 1J-19H-B268

Wellbore #1

Plan: Design #1 22Mar18 kjs

Standard Planning Report - Geographic

03 April, 2018

Database:	EDM 5000.14 Single User Db	Local Co-ordinate Reference:	Well REGNIER FARMS 1J-19H-B268
Company:	Crestone Peak Resources	TVD Reference:	WELL @ 4988.00usft (Original Well Elev)
Project:	Sec 19 T2N-R68W	MD Reference:	WELL @ 4988.00usft (Original Well Elev)
Site:	Regnier Farms Pad	North Reference:	True
Well:	REGNIER FARMS 1J-19H-B268	Survey Calculation Method:	Minimum Curvature
Wellbore:	Wellbore #1		
Design:	Design #1 22Mar18 kjs		

Project	Sec 19 T2N-R68W, Weld County, CO		
Map System:	US State Plane 1983	System Datum:	Mean Sea Level
Geo Datum:	North American Datum 1983		
Map Zone:	Colorado Northern Zone		

Site		Regnier Farms Pad			
Site Position:		Northing:	1,290,967.816 usft	Latitude:	40.131198
From:	Map	Easting:	3,127,697.187 usft	Longitude:	-105.043308
Position Uncertainty:	0.00 usft	Slot Radius:	13-3/16 "	Grid Convergence:	0.30 °

Well	REGNIER FARMS 1J-19H-B268					
Well Position	+N/-S	0.00 usft	Northing:	1,290,971.711 usft	Latitude:	40.131207
	+E/-W	0.00 usft	Easting:	3,127,787.102 usft	Longitude:	-105.042986
Position Uncertainty		0.00 usft	Wellhead Elevation:		Ground Level:	4,965.00 usft

Wellbore	Wellbore #1				
Magnetics	Model Name	Sample Date	Declination (°)	Dip Angle (°)	Field Strength (nT)
	IGRF2015	3/22/2018	8.25	66.58	52,134.88143875

Design	Design #1 22Mar18 kjs			
Audit Notes:				
Version:	Phase:	PLAN	Tie On Depth:	0.00
Vertical Section:	Depth From (TVD) (usft)	+N/-S (usft)	+E/-W (usft)	Direction (°)
	0.00	0.00	0.00	175.06

Plan Survey Tool Program	Date	4/3/2018		
Depth From (usft)	Depth To (usft)	Survey (Wellbore)	Tool Name	Remarks
1	0.00	23,097.39 Design #1 22Mar18 kjs (Wellbore)	MWD	
			OWSG MWD - Standard	

Plan Sections										
Measured Depth (usft)	Inclination (°)	Azimuth (°)	Vertical Depth (usft)	+N/-S (usft)	+E/-W (usft)	Dogleg Rate (°/100usft)	Build Rate (°/100usft)	Turn Rate (°/100usft)	TFO (°)	Target
0.00	0.00	0.00	0.00	0.00	0.00	0.00	0.00	0.00	0.00	
210.00	0.00	0.00	210.00	0.00	0.00	0.00	0.00	0.00	0.00	
795.09	11.70	73.60	791.03	16.81	57.12	2.00	2.00	0.00	73.60	
6,910.86	11.70	73.60	6,779.69	367.00	1,247.05	0.00	0.00	0.00	0.00	
8,077.49	90.00	180.24	7,523.00	-348.61	1,391.51	8.00	6.71	9.14	106.32	REGNIER FARMS 1J
23,097.60	90.00	180.24	7,523.00	-15,368.59	1,327.43	0.00	0.00	0.00	0.00	REGNIER FARMS 1J

Database:	EDM 5000.14 Single User Db	Local Co-ordinate Reference:	Well REGNIER FARMS 1J-19H-B268
Company:	Crestone Peak Resources	TVD Reference:	WELL @ 4988.00usft (Original Well Elev)
Project:	Sec 19 T2N-R68W	MD Reference:	WELL @ 4988.00usft (Original Well Elev)
Site:	Regnier Farms Pad	North Reference:	True
Well:	REGNIER FARMS 1J-19H-B268	Survey Calculation Method:	Minimum Curvature
Wellbore:	Wellbore #1		
Design:	Design #1 22Mar18 kjs		

Planned Survey									
Measured Depth (usft)	Inclination (°)	Azimuth (°)	Vertical Depth (usft)	+N/-S (usft)	+E/-W (usft)	Map Northing (usft)	Map Easting (usft)	Latitude	Longitude
0.00	0.00	0.00	0.00	0.00	0.00	1,290,971.711	3,127,787.102	40.131207	-105.042987
200.00	0.00	0.00	200.00	0.00	0.00	1,290,971.711	3,127,787.102	40.131207	-105.042987
210.00	0.00	0.00	210.00	0.00	0.00	1,290,971.711	3,127,787.102	40.131207	-105.042987
Start Build 2.00									
400.00	3.80	73.60	399.86	1.78	6.04	1,290,973.520	3,127,793.135	40.131212	-105.042965
600.00	7.80	73.60	598.80	7.48	25.43	1,290,979.325	3,127,812.491	40.131228	-105.042896
795.09	11.70	73.60	791.03	16.81	57.12	1,290,988.814	3,127,844.134	40.131253	-105.042782
Hold 11.7 Inc, 73.6 Az									
800.00	11.70	73.60	795.84	17.09	58.07	1,290,989.100	3,127,845.087	40.131254	-105.042779
1,000.00	11.70	73.60	991.68	28.54	96.99	1,291,000.753	3,127,883.941	40.131285	-105.042640
1,200.00	11.70	73.60	1,187.53	39.99	135.90	1,291,012.405	3,127,922.795	40.131317	-105.042501
1,400.00	11.70	73.60	1,383.37	51.45	174.81	1,291,024.058	3,127,961.649	40.131348	-105.042361
1,600.00	11.70	73.60	1,579.21	62.90	213.73	1,291,035.710	3,128,000.504	40.131380	-105.042222
1,800.00	11.70	73.60	1,775.06	74.35	252.64	1,291,047.362	3,128,039.358	40.131411	-105.042083
2,000.00	11.70	73.60	1,970.90	85.80	291.56	1,291,059.015	3,128,078.212	40.131443	-105.041944
2,200.00	11.70	73.60	2,166.74	97.25	330.47	1,291,070.667	3,128,117.066	40.131474	-105.041805
2,400.00	11.70	73.60	2,362.59	108.71	369.38	1,291,082.320	3,128,155.920	40.131505	-105.041666
2,600.00	11.70	73.60	2,558.43	120.16	408.30	1,291,093.972	3,128,194.774	40.131537	-105.041526
2,800.00	11.70	73.60	2,754.27	131.61	447.21	1,291,105.624	3,128,233.628	40.131568	-105.041387
3,000.00	11.70	73.60	2,950.11	143.06	486.12	1,291,117.277	3,128,272.482	40.131600	-105.041248
3,200.00	11.70	73.60	3,145.96	154.51	525.04	1,291,128.929	3,128,311.336	40.131631	-105.041109
3,400.00	11.70	73.60	3,341.80	165.97	563.95	1,291,140.582	3,128,350.190	40.131663	-105.040970
3,600.00	11.70	73.60	3,537.64	177.42	602.86	1,291,152.234	3,128,389.044	40.131694	-105.040831
3,800.00	11.70	73.60	3,733.49	188.87	641.78	1,291,163.886	3,128,427.898	40.131725	-105.040691
4,000.00	11.70	73.60	3,929.33	200.32	680.69	1,291,175.539	3,128,466.752	40.131757	-105.040552
4,200.00	11.70	73.60	4,125.17	211.77	719.60	1,291,187.191	3,128,505.606	40.131788	-105.040413
4,400.00	11.70	73.60	4,321.02	223.23	758.52	1,291,198.844	3,128,544.460	40.131820	-105.040274
4,600.00	11.70	73.60	4,516.86	234.68	797.43	1,291,210.496	3,128,583.314	40.131851	-105.040135
4,800.00	11.70	73.60	4,712.70	246.13	836.35	1,291,222.148	3,128,622.168	40.131883	-105.039996
5,000.00	11.70	73.60	4,908.55	257.58	875.26	1,291,233.801	3,128,661.023	40.131914	-105.039856
5,200.00	11.70	73.60	5,104.39	269.03	914.17	1,291,245.453	3,128,699.877	40.131945	-105.039717
5,400.00	11.70	73.60	5,300.23	280.49	953.09	1,291,257.106	3,128,738.731	40.131977	-105.039578
5,600.00	11.70	73.60	5,496.08	291.94	992.00	1,291,268.758	3,128,777.585	40.132008	-105.039439
5,800.00	11.70	73.60	5,691.92	303.39	1,030.91	1,291,280.410	3,128,816.439	40.132040	-105.039300
6,000.00	11.70	73.60	5,887.76	314.84	1,069.83	1,291,292.063	3,128,855.293	40.132071	-105.039161
6,200.00	11.70	73.60	6,083.61	326.29	1,108.74	1,291,303.715	3,128,894.147	40.132103	-105.039021
6,400.00	11.70	73.60	6,279.45	337.75	1,147.65	1,291,315.367	3,128,933.001	40.132134	-105.038882
6,600.00	11.70	73.60	6,475.29	349.20	1,186.57	1,291,327.020	3,128,971.855	40.132165	-105.038743
6,800.00	11.70	73.60	6,671.14	360.65	1,225.48	1,291,338.672	3,129,010.709	40.132197	-105.038604
6,910.86	11.70	73.60	6,779.69	367.00	1,247.05	1,291,345.131	3,129,032.246	40.132214	-105.038527
KOP 8/100									
7,000.00	11.84	109.09	6,867.07	366.56	1,264.39	1,291,344.781	3,129,049.586	40.132213	-105.038465
7,200.00	22.65	151.85	7,058.48	325.63	1,302.20	1,291,304.045	3,129,087.606	40.132101	-105.038329
7,400.00	37.29	165.14	7,231.44	232.50	1,336.13	1,291,211.098	3,129,122.013	40.131845	-105.038208
7,600.00	52.66	171.54	7,372.57	94.40	1,363.54	1,291,073.141	3,129,150.142	40.131466	-105.038110
7,800.00	68.25	175.70	7,470.93	-77.97	1,382.33	1,290,900.863	3,129,169.814	40.130993	-105.038043
8,000.00	83.92	179.03	7,518.89	-271.27	1,391.02	1,290,707.611	3,129,179.504	40.130462	-105.038012
8,077.49	90.00	180.24	7,523.00	-348.61	1,391.51	1,290,630.275	3,129,180.387	40.130250	-105.038010
LP 90 Inc, 180.24 Az									
8,200.00	90.00	180.24	7,523.00	-471.12	1,390.98	1,290,507.763	3,129,180.496	40.129914	-105.038012
8,400.00	90.00	180.24	7,523.00	-671.12	1,390.13	1,290,307.763	3,129,180.674	40.129365	-105.038015
8,600.00	90.00	180.24	7,523.00	-871.12	1,389.28	1,290,107.763	3,129,180.851	40.128816	-105.038018
8,800.00	90.00	180.24	7,523.00	-1,071.12	1,388.42	1,289,907.763	3,129,181.029	40.128266	-105.038021
9,000.00	90.00	180.24	7,523.00	-1,271.12	1,387.57	1,289,707.763	3,129,181.207	40.127717	-105.038024

Database:	EDM 5000.14 Single User Db	Local Co-ordinate Reference:	Well REGNIER FARMS 1J-19H-B268
Company:	Crestone Peak Resources	TVD Reference:	WELL @ 4988.00usft (Original Well Elev)
Project:	Sec 19 T2N-R68W	MD Reference:	WELL @ 4988.00usft (Original Well Elev)
Site:	Regnier Farms Pad	North Reference:	True
Well:	REGNIER FARMS 1J-19H-B268	Survey Calculation Method:	Minimum Curvature
Wellbore:	Wellbore #1		
Design:	Design #1 22Mar18 kjs		

Planned Survey										
Measured Depth (usft)	Inclination (°)	Azimuth (°)	Vertical Depth (usft)	+N/-S (usft)	+E/-W (usft)	Map Northing (usft)	Map Easting (usft)	Latitude	Longitude	
9,200.00	90.00	180.24	7,523.00	-1,471.11	1,386.72	1,289,507.764	3,129,181.384	40.127168	-105.038028	
9,400.00	90.00	180.24	7,523.00	-1,671.11	1,385.87	1,289,307.764	3,129,181.562	40.126619	-105.038031	
9,600.00	90.00	180.24	7,523.00	-1,871.11	1,385.01	1,289,107.764	3,129,181.739	40.126070	-105.038034	
9,800.00	90.00	180.24	7,523.00	-2,071.11	1,384.16	1,288,907.764	3,129,181.917	40.125521	-105.038037	
10,000.00	90.00	180.24	7,523.00	-2,271.11	1,383.31	1,288,707.764	3,129,182.095	40.124972	-105.038040	
10,200.00	90.00	180.24	7,523.00	-2,471.10	1,382.45	1,288,507.764	3,129,182.272	40.124423	-105.038043	
10,400.00	90.00	180.24	7,523.00	-2,671.10	1,381.60	1,288,307.764	3,129,182.450	40.123874	-105.038046	
10,600.00	90.00	180.24	7,523.00	-2,871.10	1,380.75	1,288,107.764	3,129,182.627	40.123325	-105.038049	
10,800.00	90.00	180.24	7,523.00	-3,071.10	1,379.89	1,287,907.764	3,129,182.805	40.122776	-105.038052	
11,000.00	90.00	180.24	7,523.00	-3,271.10	1,379.04	1,287,707.764	3,129,182.983	40.122227	-105.038055	
11,200.00	90.00	180.24	7,523.00	-3,471.10	1,378.19	1,287,507.764	3,129,183.160	40.121678	-105.038058	
11,400.00	90.00	180.24	7,523.00	-3,671.09	1,377.33	1,287,307.765	3,129,183.338	40.121129	-105.038062	
11,600.00	90.00	180.24	7,523.00	-3,871.09	1,376.48	1,287,107.765	3,129,183.515	40.120580	-105.038065	
11,800.00	90.00	180.24	7,523.00	-4,071.09	1,375.63	1,286,907.765	3,129,183.693	40.120031	-105.038068	
12,000.00	90.00	180.24	7,523.00	-4,271.09	1,374.77	1,286,707.765	3,129,183.871	40.119482	-105.038071	
12,200.00	90.00	180.24	7,523.00	-4,471.09	1,373.92	1,286,507.765	3,129,184.048	40.118933	-105.038074	
12,400.00	90.00	180.24	7,523.00	-4,671.08	1,373.07	1,286,307.765	3,129,184.226	40.118384	-105.038077	
12,600.00	90.00	180.24	7,523.00	-4,871.08	1,372.21	1,286,107.765	3,129,184.403	40.117835	-105.038080	
12,800.00	90.00	180.24	7,523.00	-5,071.08	1,371.36	1,285,907.765	3,129,184.581	40.117286	-105.038083	
13,000.00	90.00	180.24	7,523.00	-5,271.08	1,370.51	1,285,707.765	3,129,184.759	40.116737	-105.038086	
13,200.00	90.00	180.24	7,523.00	-5,471.08	1,369.66	1,285,507.765	3,129,184.936	40.116188	-105.038089	
13,400.00	90.00	180.24	7,523.00	-5,671.08	1,368.80	1,285,307.765	3,129,185.114	40.115639	-105.038092	
13,600.00	90.00	180.24	7,523.00	-5,871.07	1,367.95	1,285,107.765	3,129,185.291	40.115090	-105.038096	
13,800.00	90.00	180.24	7,523.00	-6,071.07	1,367.10	1,284,907.766	3,129,185.469	40.114541	-105.038099	
14,000.00	90.00	180.24	7,523.00	-6,271.07	1,366.24	1,284,707.766	3,129,185.647	40.113992	-105.038102	
14,200.00	90.00	180.24	7,523.00	-6,471.07	1,365.39	1,284,507.766	3,129,185.824	40.113443	-105.038105	
14,400.00	90.00	180.24	7,523.00	-6,671.07	1,364.54	1,284,307.766	3,129,186.002	40.112894	-105.038108	
14,600.00	90.00	180.24	7,523.00	-6,871.06	1,363.68	1,284,107.766	3,129,186.179	40.112345	-105.038111	
14,800.00	90.00	180.24	7,523.00	-7,071.06	1,362.83	1,283,907.766	3,129,186.357	40.111796	-105.038114	
15,000.00	90.00	180.24	7,523.00	-7,271.06	1,361.98	1,283,707.766	3,129,186.535	40.111247	-105.038117	
15,200.00	90.00	180.24	7,523.00	-7,471.06	1,361.12	1,283,507.766	3,129,186.712	40.110698	-105.038120	
15,400.00	90.00	180.24	7,523.00	-7,671.06	1,360.27	1,283,307.766	3,129,186.890	40.110149	-105.038123	
15,600.00	90.00	180.24	7,523.00	-7,871.06	1,359.42	1,283,107.766	3,129,187.067	40.109600	-105.038126	
15,800.00	90.00	180.24	7,523.00	-8,071.05	1,358.56	1,282,907.766	3,129,187.245	40.109051	-105.038130	
16,000.00	90.00	180.24	7,523.00	-8,271.05	1,357.71	1,282,707.767	3,129,187.423	40.108502	-105.038133	
16,200.00	90.00	180.24	7,523.00	-8,471.05	1,356.86	1,282,507.767	3,129,187.600	40.107953	-105.038136	
16,400.00	90.00	180.24	7,523.00	-8,671.05	1,356.00	1,282,307.767	3,129,187.778	40.107404	-105.038139	
16,600.00	90.00	180.24	7,523.00	-8,871.05	1,355.15	1,282,107.767	3,129,187.955	40.106855	-105.038142	
16,800.00	90.00	180.24	7,523.00	-9,071.04	1,354.30	1,281,907.767	3,129,188.133	40.106305	-105.038145	
17,000.00	90.00	180.24	7,523.00	-9,271.04	1,353.45	1,281,707.767	3,129,188.311	40.105756	-105.038148	
17,200.00	90.00	180.24	7,523.00	-9,471.04	1,352.59	1,281,507.767	3,129,188.488	40.105207	-105.038151	
17,400.00	90.00	180.24	7,523.00	-9,671.04	1,351.74	1,281,307.767	3,129,188.666	40.104658	-105.038154	
17,600.00	90.00	180.24	7,523.00	-9,871.04	1,350.89	1,281,107.767	3,129,188.843	40.104109	-105.038157	
17,800.00	90.00	180.24	7,523.00	-10,071.04	1,350.03	1,280,907.767	3,129,189.021	40.103560	-105.038160	
18,000.00	90.00	180.24	7,523.00	-10,271.03	1,349.18	1,280,707.767	3,129,189.199	40.103011	-105.038164	
18,200.00	90.00	180.24	7,523.00	-10,471.03	1,348.33	1,280,507.768	3,129,189.376	40.102462	-105.038167	
18,400.00	90.00	180.24	7,523.00	-10,671.03	1,347.47	1,280,307.768	3,129,189.554	40.101913	-105.038170	
18,600.00	90.00	180.24	7,523.00	-10,871.03	1,346.62	1,280,107.768	3,129,189.731	40.101364	-105.038173	
18,800.00	90.00	180.24	7,523.00	-11,071.03	1,345.77	1,279,907.768	3,129,189.909	40.100815	-105.038176	
19,000.00	90.00	180.24	7,523.00	-11,271.02	1,344.91	1,279,707.768	3,129,190.087	40.100266	-105.038179	
19,200.00	90.00	180.24	7,523.00	-11,471.02	1,344.06	1,279,507.768	3,129,190.264	40.099717	-105.038182	
19,400.00	90.00	180.24	7,523.00	-11,671.02	1,343.21	1,279,307.768	3,129,190.442	40.099168	-105.038185	
19,600.00	90.00	180.24	7,523.00	-11,871.02	1,342.35	1,279,107.768	3,129,190.619	40.098619	-105.038188	
19,800.00	90.00	180.24	7,523.00	-12,071.02	1,341.50	1,278,907.768	3,129,190.797	40.098070	-105.038191	
20,000.00	90.00	180.24	7,523.00	-12,271.02	1,340.65	1,278,707.768	3,129,190.975	40.097521	-105.038194	

Database:	EDM 5000.14 Single User Db	Local Co-ordinate Reference:	Well REGNIER FARMS 1J-19H-B268
Company:	Crestone Peak Resources	TVD Reference:	WELL @ 4988.00usft (Original Well Elev)
Project:	Sec 19 T2N-R68W	MD Reference:	WELL @ 4988.00usft (Original Well Elev)
Site:	Regnier Farms Pad	North Reference:	True
Well:	REGNIER FARMS 1J-19H-B268	Survey Calculation Method:	Minimum Curvature
Wellbore:	Wellbore #1		
Design:	Design #1 22Mar18 kjs		

Planned Survey									
Measured Depth (usft)	Inclination (°)	Azimuth (°)	Vertical Depth (usft)	+N/-S (usft)	+E/-W (usft)	Map Northing (usft)	Map Easting (usft)	Latitude	Longitude
20,200.00	90.00	180.24	7,523.00	-12,471.01	1,339.79	1,278,507.768	3,129,191.152	40.096972	-105.038198
20,400.00	90.00	180.24	7,523.00	-12,671.01	1,338.94	1,278,307.768	3,129,191.330	40.096423	-105.038201
20,600.00	90.00	180.24	7,523.00	-12,871.01	1,338.09	1,278,107.769	3,129,191.507	40.095874	-105.038204
20,800.00	90.00	180.24	7,523.00	-13,071.01	1,337.24	1,277,907.769	3,129,191.685	40.095325	-105.038207
21,000.00	90.00	180.24	7,523.00	-13,271.01	1,336.38	1,277,707.769	3,129,191.863	40.094776	-105.038210
21,200.00	90.00	180.24	7,523.00	-13,471.00	1,335.53	1,277,507.769	3,129,192.040	40.094227	-105.038213
21,400.00	90.00	180.24	7,523.00	-13,671.00	1,334.68	1,277,307.769	3,129,192.218	40.093678	-105.038216
21,600.00	90.00	180.24	7,523.00	-13,871.00	1,333.82	1,277,107.769	3,129,192.395	40.093129	-105.038219
21,800.00	90.00	180.24	7,523.00	-14,071.00	1,332.97	1,276,907.769	3,129,192.573	40.092580	-105.038222
22,000.00	90.00	180.24	7,523.00	-14,271.00	1,332.12	1,276,707.769	3,129,192.751	40.092031	-105.038225
22,200.00	90.00	180.24	7,523.00	-14,471.00	1,331.26	1,276,507.769	3,129,192.928	40.091482	-105.038228
22,400.00	90.00	180.24	7,523.00	-14,670.99	1,330.41	1,276,307.769	3,129,193.106	40.090933	-105.038231
22,600.00	90.00	180.24	7,523.00	-14,870.99	1,329.56	1,276,107.769	3,129,193.283	40.090384	-105.038235
22,800.00	90.00	180.24	7,523.00	-15,070.99	1,328.70	1,275,907.770	3,129,193.461	40.089835	-105.038238
23,000.00	90.00	180.24	7,523.00	-15,270.99	1,327.85	1,275,707.770	3,129,193.639	40.089286	-105.038241
23,096.60	90.00	180.24	7,523.00	-15,367.59	1,327.44	1,275,611.170	3,129,193.724	40.089020	-105.038242
TD at 23097.60									
23,097.60	90.00	180.24	7,523.00	-15,368.59	1,327.43	1,275,610.170	3,129,193.725	40.089018	-105.038242

Design Targets									
Target Name	Dip Angle (°)	Dip Dir. (°)	TVD (usft)	+N/-S (usft)	+E/-W (usft)	Northing (usft)	Easting (usft)	Latitude	Longitude
- hit/miss target									
- Shape									
REGNIER FARMS 1J-19H-B268	0.00	0.00	7,523.00	-348.61	1,391.51	1,290,630.275	3,129,180.387	40.130250	-105.038010
- plan hits target center									
- Point									
REGNIER FARMS 1J-19H-B268	0.00	0.00	7,523.00	-15,368.59	1,327.43	1,275,610.170	3,129,193.725	40.089018	-105.038242
- plan hits target center									
- Point									

Plan Annotations					
Measured Depth (usft)	Vertical Depth (usft)	Local Coordinates			
		+N/-S (usft)	+E/-W (usft)	Comment	
210.00	210.00	0.00	0.00	Start Build 2.00	
795.09	791.03	16.81	57.12	Hold 11.7 Inc, 73.6 Az	
6,910.86	6,779.69	367.00	1,247.05	KOP 8/100	
8,077.49	7,523.00	-348.61	1,391.51	LP 90 Inc, 180.24 Az	
23,096.60	7,523.00	-15,367.59	1,327.44	TD at 23097.60	