



Crestone Peak Resources

Well Name:

REGNIER FARMS 1H-19H-B268

Project Name:

Sec 19 T2N-R68W

Pad Name:

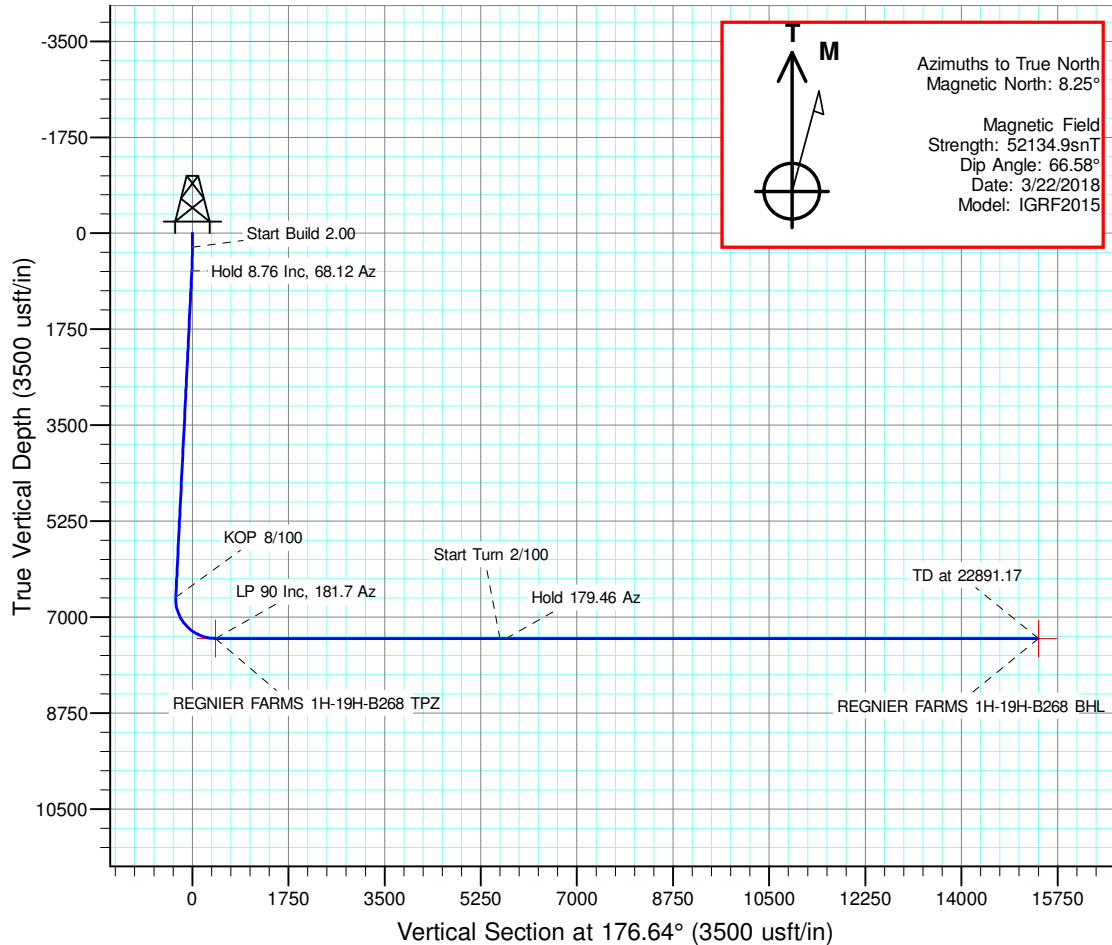
Regnier Farms Pad

ANNOTATIONS

MD	Inc	Azi	TVD	+N/-S	+E/-W	VSect	Departure	Annotation
250.00	0.00	0.00	250.00	0.00	0.00	0.00	0.00	Start Build 2.00
687.80	8.76	68.12	686.09	12.44	30.98	-10.61	33.39	Hold 8.76 Inc, 68.12 Az
6708.52	8.76	68.12	6636.65	353.99	881.47	-301.73	949.90	KOP 8/100
7877.16	90.00	181.70	7389.00	-363.71	966.42	419.72	1692.82	LP 90 Inc, 181.7 Az
13077.16	90.00	181.70	7389.00	-5561.43	812.16	5599.46	6892.82	Start Turn 2/100
13189.14	90.00	179.46	7389.00	-5673.40	811.02	5711.17	7004.81	Hold 179.46 Az
22891.17	90.00	179.46	7389.00	-15374.99	902.42	15401.45	16706.83	TD at 22891.17

DESIGN TARGET DETAILS

Name	TVD	+N/-S	+E/-W	Northing	Easting	Latitude	Longitude	Shape
REGNIER FARMS 1H-19H-B268 BHL	7389.00	-15374.99	902.42	1275600.708	3128748.752	40.088998	-105.039833	Point
REGNIER FARMS 1H-19H-B268 TPZ	7389.00	-363.71	966.42	1290612.115	3128735.403	40.130206	-105.039602	Point

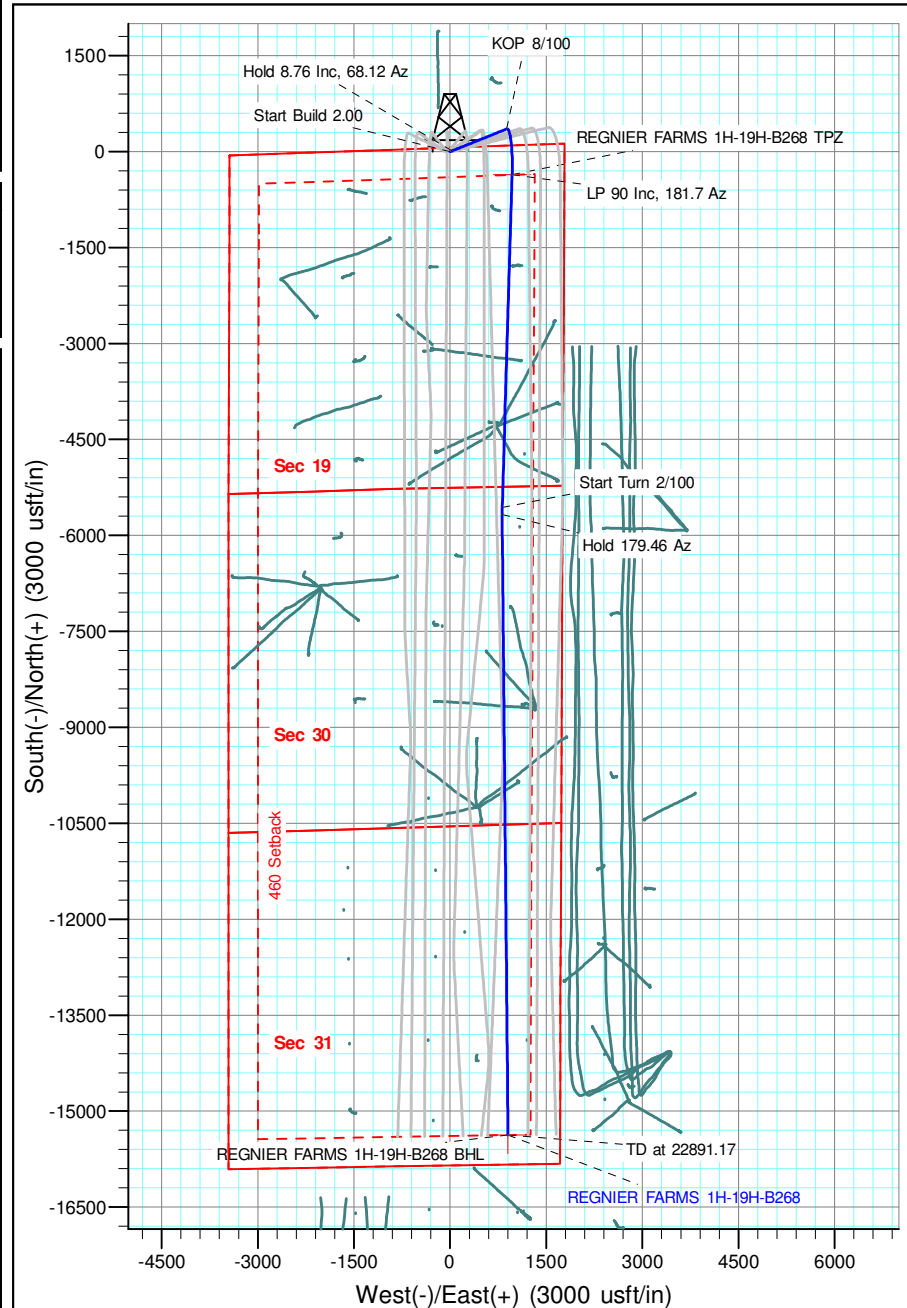


Geodetic Datum:

North American Datum 1983
US State Plane 1983, Colorado Northern Zone

Elevation:

Ground Elevation: 4965.00
KB Elevation: WELL @ 4988.00usft (Original Well Elev)





Crestone Peak Resources

Sec 19 T2N-R68W

Regnier Farms Pad

REGNIER FARMS 1H-19H-B268

Wellbore #1

Plan: Design #1 22Mar18 kjs

Standard Planning Report - Geographic

03 April, 2018

Database:	EDM 5000.14 Single User Db	Local Co-ordinate Reference:	Well REGNIER FARMS 1H-19H-B268
Company:	Crestone Peak Resources	TVD Reference:	WELL @ 4988.00usft (Original Well Elev)
Project:	Sec 19 T2N-R68W	MD Reference:	WELL @ 4988.00usft (Original Well Elev)
Site:	Regnier Farms Pad	North Reference:	True
Well:	REGNIER FARMS 1H-19H-B268	Survey Calculation Method:	Minimum Curvature
Wellbore:	Wellbore #1		
Design:	Design #1 22Mar18 kjs		

Project	Sec 19 T2N-R68W, Weld County, CO		
Map System:	US State Plane 1983	System Datum:	Mean Sea Level
Geo Datum:	North American Datum 1983		
Map Zone:	Colorado Northern Zone		

Site		Regnier Farms Pad			
Site Position:		Northing:	1,290,967.816 usft	Latitude:	40.131198
From:	Map	Easting:	3,127,697.187 usft	Longitude:	-105.043308
Position Uncertainty:	0.00 usft	Slot Radius:	13-3/16 "	Grid Convergence:	0.30 °

Well	REGNIER FARMS 1H-19H-B268					
Well Position	+N/-S	0.00 usft	Northing:	1,290,970.845 usft	Latitude:	40.131205
	+E/-W	0.00 usft	Easting:	3,127,767.121 usft	Longitude:	-105.043058
Position Uncertainty		0.00 usft	Wellhead Elevation:		Ground Level:	4,965.00 usft

Wellbore	Wellbore #1				
Magnetics	Model Name	Sample Date	Declination (°)	Dip Angle (°)	Field Strength (nT)
	IGRF2015	3/22/2018	8.25	66.58	52,134.87267991

Design	Design #1 22Mar18 kjs			
Audit Notes:				
Version:	Phase:	PLAN	Tie On Depth:	0.00
Vertical Section:	Depth From (TVD) (usft)	+N/-S (usft)	+E/-W (usft)	Direction (°)
	0.00	0.00	0.00	176.64

Plan Survey Tool Program	Date	4/3/2018			
Depth From (usft)	Depth To (usft)	Survey (Wellbore)	Tool Name	Remarks	
1	0.00	22,891.17 Design #1 22Mar18 kjs (Wellbore)	MWD		
			OWSG MWD - Standard		

Plan Sections										
Measured Depth (usft)	Inclination (°)	Azimuth (°)	Vertical Depth (usft)	+N/-S (usft)	+E/-W (usft)	Dogleg Rate (°/100usft)	Build Rate (°/100usft)	Turn Rate (°/100usft)	TFO (°)	Target
0.00	0.00	0.00	0.00	0.00	0.00	0.00	0.00	0.00	0.00	
250.00	0.00	0.00	250.00	0.00	0.00	0.00	0.00	0.00	0.00	
687.80	8.76	68.12	686.09	12.44	30.98	2.00	2.00	0.00	68.12	
6,708.52	8.76	68.12	6,636.65	353.99	881.47	0.00	0.00	0.00	0.00	
7,877.16	90.00	181.70	7,389.00	-363.71	966.42	8.00	6.95	9.72	113.33	REGNIER FARMS 1H-
13,077.16	90.00	181.70	7,389.00	-5,561.43	812.16	0.00	0.00	0.00	0.00	
13,189.14	90.00	179.46	7,389.00	-5,673.40	811.02	2.00	0.00	-2.00	-90.00	
22,891.17	90.00	179.46	7,389.00	-15,374.99	902.42	0.00	0.00	0.00	0.00	REGNIER FARMS 1H-

Database:	EDM 5000.14 Single User Db	Local Co-ordinate Reference:	Well REGNIER FARMS 1H-19H-B268
Company:	Crestone Peak Resources	TVD Reference:	WELL @ 4988.00usft (Original Well Elev)
Project:	Sec 19 T2N-R68W	MD Reference:	WELL @ 4988.00usft (Original Well Elev)
Site:	Regnier Farms Pad	North Reference:	True
Well:	REGNIER FARMS 1H-19H-B268	Survey Calculation Method:	Minimum Curvature
Wellbore:	Wellbore #1		
Design:	Design #1 22Mar18 kjs		

Planned Survey									
Measured Depth (usft)	Inclination (°)	Azimuth (°)	Vertical Depth (usft)	+N/-S (usft)	+E/-W (usft)	Map Northing (usft)	Map Easting (usft)	Latitude	Longitude
0.00	0.00	0.00	0.00	0.00	0.00	1,290,970.845	3,127,767.121	40.131205	-105.043058
200.00	0.00	0.00	200.00	0.00	0.00	1,290,970.845	3,127,767.121	40.131205	-105.043058
250.00	0.00	0.00	250.00	0.00	0.00	1,290,970.845	3,127,767.121	40.131205	-105.043058
Start Build 2.00									
400.00	3.00	68.12	399.93	1.46	3.64	1,290,972.327	3,127,770.757	40.131209	-105.043045
600.00	7.00	68.12	599.13	7.96	19.82	1,290,978.904	3,127,786.896	40.131227	-105.042987
687.80	8.76	68.12	686.09	12.44	30.98	1,290,983.446	3,127,798.039	40.131239	-105.042947
Hold 8.76 Inc, 68.12 Az									
800.00	8.76	68.12	796.99	18.81	46.83	1,290,989.893	3,127,813.856	40.131257	-105.042891
1,000.00	8.76	68.12	994.66	30.15	75.08	1,291,001.384	3,127,842.049	40.131288	-105.042790
1,200.00	8.76	68.12	1,192.33	41.50	103.34	1,291,012.875	3,127,870.242	40.131319	-105.042689
1,400.00	8.76	68.12	1,390.00	52.84	131.59	1,291,024.366	3,127,898.436	40.131350	-105.042588
1,600.00	8.76	68.12	1,587.67	64.19	159.84	1,291,035.858	3,127,926.629	40.131381	-105.042487
1,800.00	8.76	68.12	1,785.34	75.54	188.09	1,291,047.349	3,127,954.822	40.131412	-105.042385
2,000.00	8.76	68.12	1,983.01	86.88	216.34	1,291,058.840	3,127,983.015	40.131443	-105.042284
2,200.00	8.76	68.12	2,180.67	98.23	244.60	1,291,070.331	3,128,011.209	40.131475	-105.042183
2,400.00	8.76	68.12	2,378.34	109.57	272.85	1,291,081.822	3,128,039.402	40.131506	-105.042082
2,600.00	8.76	68.12	2,576.01	120.92	301.10	1,291,093.313	3,128,067.595	40.131537	-105.041981
2,800.00	8.76	68.12	2,773.68	132.26	329.35	1,291,104.805	3,128,095.789	40.131568	-105.041880
3,000.00	8.76	68.12	2,971.35	143.61	357.61	1,291,116.296	3,128,123.982	40.131599	-105.041779
3,200.00	8.76	68.12	3,169.02	154.96	385.86	1,291,127.787	3,128,152.175	40.131630	-105.041678
3,400.00	8.76	68.12	3,366.69	166.30	414.11	1,291,139.278	3,128,180.368	40.131661	-105.041577
3,600.00	8.76	68.12	3,564.36	177.65	442.36	1,291,150.769	3,128,208.562	40.131693	-105.041476
3,800.00	8.76	68.12	3,762.03	188.99	470.61	1,291,162.260	3,128,236.755	40.131724	-105.041375
4,000.00	8.76	68.12	3,959.70	200.34	498.87	1,291,173.751	3,128,264.948	40.131755	-105.041274
4,200.00	8.76	68.12	4,157.37	211.68	527.12	1,291,185.243	3,128,293.141	40.131786	-105.041173
4,400.00	8.76	68.12	4,355.04	223.03	555.37	1,291,196.734	3,128,321.335	40.131817	-105.041072
4,600.00	8.76	68.12	4,552.70	234.38	583.62	1,291,208.225	3,128,349.528	40.131848	-105.040971
4,800.00	8.76	68.12	4,750.37	245.72	611.87	1,291,219.716	3,128,377.721	40.131879	-105.040870
5,000.00	8.76	68.12	4,948.04	257.07	640.13	1,291,231.207	3,128,405.915	40.131911	-105.040769
5,200.00	8.76	68.12	5,145.71	268.41	668.38	1,291,242.698	3,128,434.108	40.131942	-105.040668
5,400.00	8.76	68.12	5,343.38	279.76	696.63	1,291,254.190	3,128,462.301	40.131973	-105.040567
5,600.00	8.76	68.12	5,541.05	291.10	724.88	1,291,265.681	3,128,490.494	40.132004	-105.040466
5,800.00	8.76	68.12	5,738.72	302.45	753.13	1,291,277.172	3,128,518.688	40.132035	-105.040365
6,000.00	8.76	68.12	5,936.39	313.80	781.39	1,291,288.663	3,128,546.881	40.132066	-105.040264
6,200.00	8.76	68.12	6,134.06	325.14	809.64	1,291,300.154	3,128,575.074	40.132097	-105.040163
6,400.00	8.76	68.12	6,331.73	336.49	837.89	1,291,311.645	3,128,603.267	40.132129	-105.040062
6,600.00	8.76	68.12	6,529.40	347.83	866.14	1,291,323.137	3,128,631.461	40.132160	-105.039960
6,708.52	8.76	68.12	6,636.65	353.99	881.47	1,291,329.372	3,128,646.758	40.132177	-105.039906
KOP 8/100									
6,800.00	8.89	117.28	6,727.17	353.34	894.24	1,291,328.790	3,128,659.526	40.132175	-105.039860
7,000.00	21.33	160.51	6,920.37	311.69	920.29	1,291,287.274	3,128,685.789	40.132060	-105.039767
7,200.00	36.60	170.74	7,094.94	217.94	942.16	1,291,193.639	3,128,708.142	40.131803	-105.039689
7,400.00	52.27	175.43	7,237.35	79.36	958.15	1,291,055.140	3,128,724.854	40.131423	-105.039631
7,600.00	68.06	178.44	7,336.56	-93.32	967.04	1,290,882.506	3,128,734.629	40.130949	-105.039600
7,800.00	83.89	180.83	7,384.89	-286.72	968.13	1,290,689.114	3,128,736.711	40.130418	-105.039596
7,877.16	90.00	181.70	7,389.00	-363.71	966.42	1,290,612.115	3,128,735.403	40.130206	-105.039602
LP 90 Inc, 181.7 Az									
8,000.00	90.00	181.70	7,389.00	-486.50	962.78	1,290,489.309	3,128,732.392	40.129869	-105.039615
8,200.00	90.00	181.70	7,389.00	-686.42	956.84	1,290,289.369	3,128,727.489	40.129321	-105.039636
8,400.00	90.00	181.70	7,389.00	-886.33	950.91	1,290,089.430	3,128,722.586	40.128772	-105.039657
8,600.00	90.00	181.70	7,389.00	-1,086.24	944.98	1,289,889.490	3,128,717.683	40.128223	-105.039679
8,800.00	90.00	181.70	7,389.00	-1,286.15	939.04	1,289,689.550	3,128,712.780	40.127674	-105.039700
9,000.00	90.00	181.70	7,389.00	-1,486.06	933.11	1,289,489.610	3,128,707.877	40.127125	-105.039721

Database:	EDM 5000.14 Single User Db	Local Co-ordinate Reference:	Well REGNIER FARMS 1H-19H-B268
Company:	Crestone Peak Resources	TVD Reference:	WELL @ 4988.00usft (Original Well Elev)
Project:	Sec 19 T2N-R68W	MD Reference:	WELL @ 4988.00usft (Original Well Elev)
Site:	Regnier Farms Pad	North Reference:	True
Well:	REGNIER FARMS 1H-19H-B268	Survey Calculation Method:	Minimum Curvature
Wellbore:	Wellbore #1		
Design:	Design #1 22Mar18 kjs		

Planned Survey									
Measured Depth (usft)	Inclination (°)	Azimuth (°)	Vertical Depth (usft)	+N/-S (usft)	+E/-W (usft)	Map Northing (usft)	Map Easting (usft)	Latitude	Longitude
9,200.00	90.00	181.70	7,389.00	-1,685.97	927.18	1,289,289.670	3,128,702.974	40.126577	-105.039742
9,400.00	90.00	181.70	7,389.00	-1,885.89	921.24	1,289,089.730	3,128,698.071	40.126028	-105.039764
9,600.00	90.00	181.70	7,389.00	-2,085.80	915.31	1,288,889.790	3,128,693.168	40.125479	-105.039785
9,800.00	90.00	181.70	7,389.00	-2,285.71	909.38	1,288,689.850	3,128,688.265	40.124930	-105.039806
10,000.00	90.00	181.70	7,389.00	-2,485.62	903.44	1,288,489.910	3,128,683.362	40.124381	-105.039827
10,200.00	90.00	181.70	7,389.00	-2,685.53	897.51	1,288,289.971	3,128,678.459	40.123833	-105.039849
10,400.00	90.00	181.70	7,389.00	-2,885.45	891.58	1,288,090.031	3,128,673.556	40.123284	-105.039870
10,600.00	90.00	181.70	7,389.00	-3,085.36	885.64	1,287,890.091	3,128,668.653	40.122735	-105.039891
10,800.00	90.00	181.70	7,389.00	-3,285.27	879.71	1,287,690.151	3,128,663.750	40.122186	-105.039912
11,000.00	90.00	181.70	7,389.00	-3,485.18	873.78	1,287,490.211	3,128,658.846	40.121637	-105.039934
11,200.00	90.00	181.70	7,389.00	-3,685.09	867.84	1,287,290.271	3,128,653.943	40.121089	-105.039955
11,400.00	90.00	181.70	7,389.00	-3,885.01	861.91	1,287,090.331	3,128,649.040	40.120540	-105.039976
11,600.00	90.00	181.70	7,389.00	-4,084.92	855.98	1,286,890.391	3,128,644.137	40.119991	-105.039997
11,800.00	90.00	181.70	7,389.00	-4,284.83	850.04	1,286,690.452	3,128,639.234	40.119442	-105.040019
12,000.00	90.00	181.70	7,389.00	-4,484.74	844.11	1,286,490.512	3,128,634.331	40.118894	-105.040040
12,200.00	90.00	181.70	7,389.00	-4,684.65	838.18	1,286,290.572	3,128,629.428	40.118345	-105.040061
12,400.00	90.00	181.70	7,389.00	-4,884.57	832.24	1,286,090.632	3,128,624.525	40.117796	-105.040082
12,600.00	90.00	181.70	7,389.00	-5,084.48	826.31	1,285,890.692	3,128,619.622	40.117247	-105.040104
12,800.00	90.00	181.70	7,389.00	-5,284.39	820.38	1,285,690.752	3,128,614.719	40.116698	-105.040125
13,000.00	90.00	181.70	7,389.00	-5,484.30	814.45	1,285,490.812	3,128,609.816	40.116150	-105.040146
13,077.16	90.00	181.70	7,389.00	-5,561.43	812.16	1,285,413.678	3,128,607.925	40.115938	-105.040154
Start Turn 2/100									
13,189.14	90.00	179.46	7,389.00	-5,673.40	811.02	1,285,301.699	3,128,607.368	40.115631	-105.040158
Hold 179.46 Az									
13,200.00	90.00	179.46	7,389.00	-5,684.26	811.12	1,285,290.845	3,128,607.526	40.115601	-105.040158
13,400.00	90.00	179.46	7,389.00	-5,884.25	813.01	1,285,090.866	3,128,610.441	40.115052	-105.040151
13,600.00	90.00	179.46	7,389.00	-6,084.24	814.89	1,284,890.888	3,128,613.355	40.114503	-105.040145
13,800.00	90.00	179.46	7,389.00	-6,284.23	816.78	1,284,690.909	3,128,616.270	40.113954	-105.040138
14,000.00	90.00	179.46	7,389.00	-6,484.22	818.66	1,284,490.930	3,128,619.184	40.113405	-105.040131
14,200.00	90.00	179.46	7,389.00	-6,684.21	820.54	1,284,290.951	3,128,622.099	40.112856	-105.040124
14,400.00	90.00	179.46	7,389.00	-6,884.20	822.43	1,284,090.973	3,128,625.013	40.112307	-105.040118
14,600.00	90.00	179.46	7,389.00	-7,084.19	824.31	1,283,890.994	3,128,627.928	40.111758	-105.040111
14,800.00	90.00	179.46	7,389.00	-7,284.18	826.20	1,283,691.015	3,128,630.842	40.111209	-105.040104
15,000.00	90.00	179.46	7,389.00	-7,484.18	828.08	1,283,491.036	3,128,633.757	40.110660	-105.040098
15,200.00	90.00	179.46	7,389.00	-7,684.17	829.96	1,283,291.058	3,128,636.671	40.110111	-105.040091
15,400.00	90.00	179.46	7,389.00	-7,884.16	831.85	1,283,091.079	3,128,639.586	40.109562	-105.040084
15,600.00	90.00	179.46	7,389.00	-8,084.15	833.73	1,282,891.100	3,128,642.501	40.109013	-105.040077
15,800.00	90.00	179.46	7,389.00	-8,284.14	835.62	1,282,691.121	3,128,645.415	40.108464	-105.040071
16,000.00	90.00	179.46	7,389.00	-8,484.13	837.50	1,282,491.143	3,128,648.330	40.107915	-105.040064
16,200.00	90.00	179.46	7,389.00	-8,684.12	839.38	1,282,291.164	3,128,651.244	40.107366	-105.040057
16,400.00	90.00	179.46	7,389.00	-8,884.11	841.27	1,282,091.185	3,128,654.159	40.106817	-105.040051
16,600.00	90.00	179.46	7,389.00	-9,084.10	843.15	1,281,891.206	3,128,657.073	40.106268	-105.040044
16,800.00	90.00	179.46	7,389.00	-9,284.10	845.04	1,281,691.228	3,128,659.988	40.105719	-105.040037
17,000.00	90.00	179.46	7,389.00	-9,484.09	846.92	1,281,491.249	3,128,662.902	40.105170	-105.040030
17,200.00	90.00	179.46	7,389.00	-9,684.08	848.80	1,281,291.270	3,128,665.817	40.104621	-105.040024
17,400.00	90.00	179.46	7,389.00	-9,884.07	850.69	1,281,091.291	3,128,668.731	40.104072	-105.040017
17,600.00	90.00	179.46	7,389.00	-10,084.06	852.57	1,280,891.313	3,128,671.646	40.103523	-105.040010
17,800.00	90.00	179.46	7,389.00	-10,284.05	854.46	1,280,691.334	3,128,674.560	40.102974	-105.040004
18,000.00	90.00	179.46	7,389.00	-10,484.04	856.34	1,280,491.355	3,128,677.475	40.102425	-105.039997
18,200.00	90.00	179.46	7,389.00	-10,684.03	858.22	1,280,291.376	3,128,680.390	40.101876	-105.039990
18,400.00	90.00	179.46	7,389.00	-10,884.02	860.11	1,280,091.398	3,128,683.304	40.101327	-105.039983
18,600.00	90.00	179.46	7,389.00	-11,084.02	861.99	1,279,891.419	3,128,686.219	40.100778	-105.039977
18,800.00	90.00	179.46	7,389.00	-11,284.01	863.88	1,279,691.440	3,128,689.133	40.100229	-105.039970
19,000.00	90.00	179.46	7,389.00	-11,484.00	865.76	1,279,491.461	3,128,692.048	40.099680	-105.039963

Database:	EDM 5000.14 Single User Db	Local Co-ordinate Reference:	Well REGNIER FARMS 1H-19H-B268
Company:	Crestone Peak Resources	TVD Reference:	WELL @ 4988.00usft (Original Well Elev)
Project:	Sec 19 T2N-R68W	MD Reference:	WELL @ 4988.00usft (Original Well Elev)
Site:	Regnier Farms Pad	North Reference:	True
Well:	REGNIER FARMS 1H-19H-B268	Survey Calculation Method:	Minimum Curvature
Wellbore:	Wellbore #1		
Design:	Design #1 22Mar18 kjs		

Planned Survey									
Measured Depth (usft)	Inclination (°)	Azimuth (°)	Vertical Depth (usft)	+N/-S (usft)	+E/-W (usft)	Map Northing (usft)	Map Easting (usft)	Latitude	Longitude
19,200.00	90.00	179.46	7,389.00	-11,683.99	867.64	1,279,291.483	3,128,694.962	40.099131	-105.039957
19,400.00	90.00	179.46	7,389.00	-11,883.98	869.53	1,279,091.504	3,128,697.877	40.098582	-105.039950
19,600.00	90.00	179.46	7,389.00	-12,083.97	871.41	1,278,891.525	3,128,700.791	40.098033	-105.039943
19,800.00	90.00	179.46	7,389.00	-12,283.96	873.30	1,278,691.546	3,128,703.706	40.097483	-105.039936
20,000.00	90.00	179.46	7,389.00	-12,483.95	875.18	1,278,491.567	3,128,706.620	40.096934	-105.039930
20,200.00	90.00	179.46	7,389.00	-12,683.94	877.06	1,278,291.589	3,128,709.535	40.096385	-105.039923
20,400.00	90.00	179.46	7,389.00	-12,883.94	878.95	1,278,091.610	3,128,712.449	40.095836	-105.039916
20,600.00	90.00	179.46	7,389.00	-13,083.93	880.83	1,277,891.631	3,128,715.364	40.095287	-105.039910
20,800.00	90.00	179.46	7,389.00	-13,283.92	882.72	1,277,691.652	3,128,718.278	40.094738	-105.039903
21,000.00	90.00	179.46	7,389.00	-13,483.91	884.60	1,277,491.674	3,128,721.193	40.094189	-105.039896
21,200.00	90.00	179.46	7,389.00	-13,683.90	886.49	1,277,291.695	3,128,724.108	40.093640	-105.039890
21,400.00	90.00	179.46	7,389.00	-13,883.89	888.37	1,277,091.716	3,128,727.022	40.093091	-105.039883
21,600.00	90.00	179.46	7,389.00	-14,083.88	890.25	1,276,891.737	3,128,729.937	40.092542	-105.039876
21,800.00	90.00	179.46	7,389.00	-14,283.87	892.14	1,276,691.759	3,128,732.851	40.091993	-105.039869
22,000.00	90.00	179.46	7,389.00	-14,483.86	894.02	1,276,491.780	3,128,735.766	40.091444	-105.039863
22,200.00	90.00	179.46	7,389.00	-14,683.86	895.91	1,276,291.801	3,128,738.680	40.090895	-105.039856
22,400.00	90.00	179.46	7,389.00	-14,883.85	897.79	1,276,091.822	3,128,741.595	40.090346	-105.039849
22,600.00	90.00	179.46	7,389.00	-15,083.84	899.67	1,275,891.844	3,128,744.509	40.089797	-105.039843
22,800.00	90.00	179.46	7,389.00	-15,283.83	901.56	1,275,691.865	3,128,747.424	40.089248	-105.039836
22,891.17	90.00	179.46	7,389.00	-15,374.99	902.42	1,275,600.708	3,128,748.752	40.088998	-105.039833
TD at 22891.17									

Design Targets									
Target Name	Dip Angle (°)	Dip Dir. (°)	TVD (usft)	+N/-S (usft)	+E/-W (usft)	Northing (usft)	Easting (usft)	Latitude	Longitude
- hit/miss target									
- Shape									
REGNIER FARMS 1H-1	0.00	0.00	7,389.00	-15,374.99	902.42	1,275,600.708	3,128,748.752	40.088998	-105.039833
- plan hits target center									
- Point									
REGNIER FARMS 1H-1	0.00	0.00	7,389.00	-363.71	966.42	1,290,612.115	3,128,735.403	40.130206	-105.039602
- plan hits target center									
- Point									

Plan Annotations					
Measured Depth (usft)	Vertical Depth (usft)	Local Coordinates			
		+N/-S (usft)	+E/-W (usft)	Comment	
250.00	250.00	0.00	0.00	Start Build 2.00	
687.80	686.09	12.44	30.98	Hold 8.76 Inc, 68.12 Az	
6,708.52	6,636.65	353.99	881.47	KOP 8/100	
7,877.16	7,389.00	-363.71	966.42	LP 90 Inc, 181.7 Az	
13,077.16	7,389.00	-5,561.43	812.16	Start Turn 2/100	
13,189.14	7,389.00	-5,673.40	811.02	Hold 179.46 Az	
22,891.17	7,389.00	-15,374.99	902.42	TD at 22891.17	