



Crestone Peak Resources

Well Name:

REGNIER FARMS 1G-19H-B268

Project Name:

Sec 19 T2N-R68W

Pad Name:

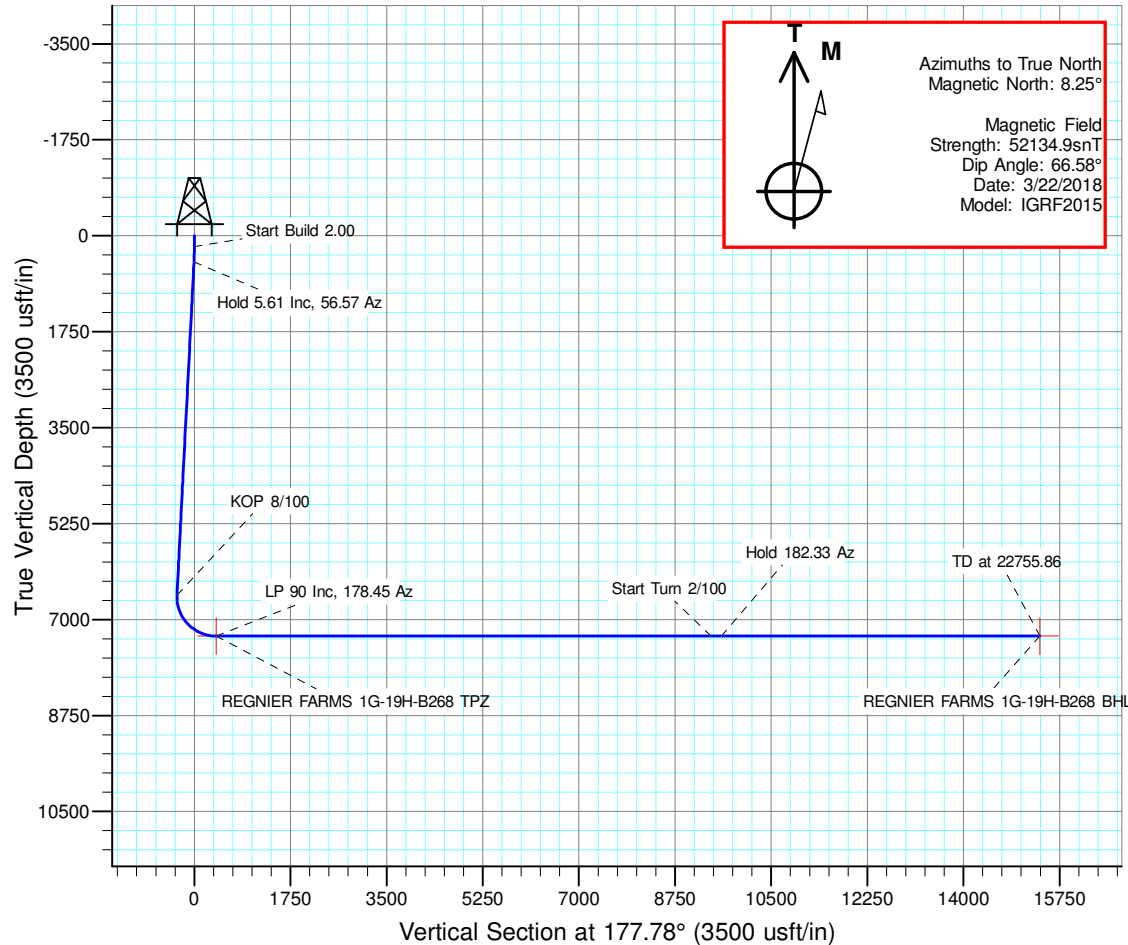
Regnier Farms Pad

ANNOTATIONS

MD	Inc	Azi	TVD	+N/-S	+E/-W	VSect	Departure	Annotation
200.00	0.00	0.00	200.00	0.00	0.00	0.00	0.00	Start Build 2.00
480.54	5.61	56.57	480.09	7.56	11.45	-7.11	13.72	Hold 5.61 Inc, 56.57 Az
6583.12	5.61	56.57	6553.43	336.23	509.41	-316.20	610.37	KOP 8/100
7745.11	90.00	178.45	7304.00	-377.06	591.35	399.73	1338.58	LP 90 Inc, 178.45 Az
16745.11	90.00	178.45	7304.00	-9373.77	834.79	9399.11	10338.58	Start Turn 2/100
16938.91	90.00	182.33	7304.00	-9567.52	833.48	9592.67	10532.38	Hold 182.33 Az
22754.86	90.00	182.33	7304.00	-15378.68	597.44	15390.28	16348.33	TD at 22755.86

DESIGN TARGET DETAILS

Name	TVD	+N/-S	+E/-W	Northing	Easting	Latitude	Longitude	Shape
REGNIER FARMS 1G-19H-B268 BHL	7304.00	-15379.69	597.40	1275594.010	3128433.772	40.088984	-105.040958	Point
REGNIER FARMS 1G-19H-B268 TPZ	7304.00	-377.06	591.35	1290596.404	3128350.417	40.130169	-105.040979	Point

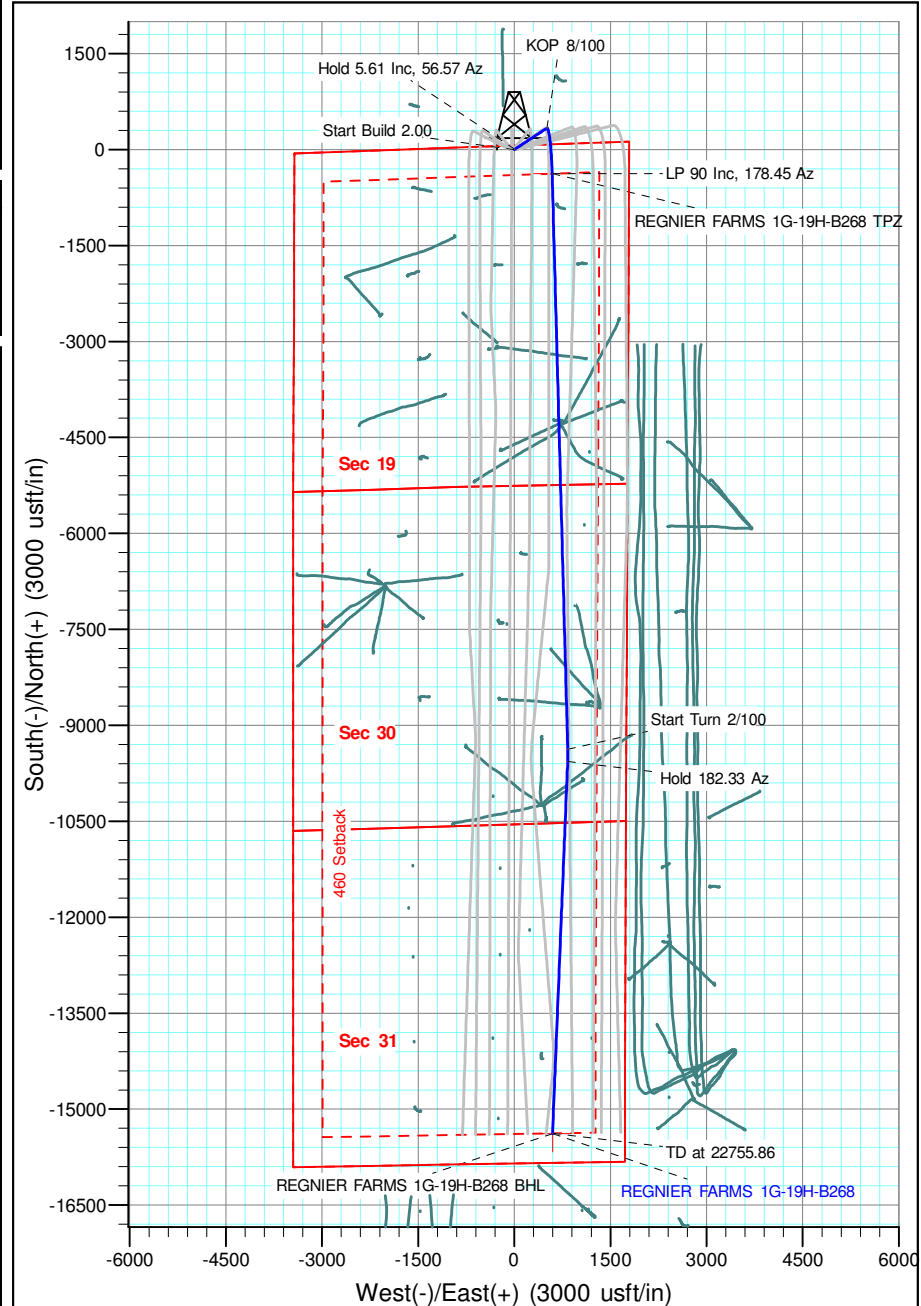


Geodetic Datum:

North American Datum 1983
US State Plane 1983, Colorado Northern Zone

Elevation:

Ground Elevation: 4965.00
KB Elevation: WELL @ 4988.00usft (Original Well Elev)





Crestone Peak Resources

Sec 19 T2N-R68W

Regnier Farms Pad

REGNIER FARMS 1G-19H-B268

Wellbore #1

Plan: Design #1 22Mar18 kjs

Standard Planning Report - Geographic

03 April, 2018

Database:	EDM 5000.14 Single User Db	Local Co-ordinate Reference:	Well REGNIER FARMS 1G-19H-B268
Company:	Crestone Peak Resources	TVD Reference:	WELL @ 4988.00usft (Original Well Elev)
Project:	Sec 19 T2N-R68W	MD Reference:	WELL @ 4988.00usft (Original Well Elev)
Site:	Regnier Farms Pad	North Reference:	True
Well:	REGNIER FARMS 1G-19H-B268	Survey Calculation Method:	Minimum Curvature
Wellbore:	Wellbore #1		
Design:	Design #1 22Mar18 kjs		

Project	Sec 19 T2N-R68W, Weld County, CO		
Map System:	US State Plane 1983	System Datum:	Mean Sea Level
Geo Datum:	North American Datum 1983		
Map Zone:	Colorado Northern Zone		

Site		Regnier Farms Pad			
Site Position:		Northing:	1,290,967.816 usft	Latitude:	40.131198
From:	Map	Easting:	3,127,697.187 usft	Longitude:	-105.043308
Position Uncertainty:	0.00 usft	Slot Radius:	13-3/16 "	Grid Convergence:	0.30 °

Well	REGNIER FARMS 1G-19H-B268					
Well Position	+N/-S	0.00 usft	Northing:	1,290,970.413 usft	Latitude:	40.131204
	+E/-W	0.00 usft	Easting:	3,127,757.131 usft	Longitude:	-105.043094
Position Uncertainty		0.00 usft	Wellhead Elevation:		Ground Level:	4,965.00 usft

Wellbore	Wellbore #1				
Magnetics	Model Name	Sample Date	Declination (°)	Dip Angle (°)	Field Strength (nT)
	IGRF2015	3/22/2018	8.25	66.58	52,134.86027538

Design	Design #1 22Mar18 kjs			
Audit Notes:				
Version:	Phase:	PLAN	Tie On Depth:	0.00
Vertical Section:	Depth From (TVD) (usft)	+N/-S (usft)	+E/-W (usft)	Direction (°)
	0.00	0.00	0.00	177.78

Plan Survey Tool Program	Date	4/3/2018		
Depth From (usft)	Depth To (usft)	Survey (Wellbore)	Tool Name	Remarks
1	0.00	22,755.39 Design #1 22Mar18 kjs (Wellbore)	MWD	
			OWSG MWD - Standard	

Plan Sections										
Measured Depth (usft)	Inclination (°)	Azimuth (°)	Vertical Depth (usft)	+N/-S (usft)	+E/-W (usft)	Dogleg Rate (°/100usft)	Build Rate (°/100usft)	Turn Rate (°/100usft)	TFO (°)	Target
0.00	0.00	0.00	0.00	0.00	0.00	0.00	0.00	0.00	0.00	
200.00	0.00	0.00	200.00	0.00	0.00	0.00	0.00	0.00	0.00	
480.54	5.61	56.57	480.09	7.56	11.45	2.00	2.00	0.00	56.57	
6,583.12	5.61	56.57	6,553.43	336.23	509.41	0.00	0.00	0.00	0.00	
7,745.11	90.00	178.45	7,304.00	-377.06	591.35	8.00	7.26	10.49	121.75	REGNIER FARMS 1C
16,745.11	90.00	178.45	7,304.00	-9,373.77	834.79	0.00	0.00	0.00	0.00	
16,938.91	90.00	182.33	7,304.00	-9,567.53	833.48	2.00	0.00	2.00	90.00	
22,755.86	90.00	182.33	7,304.00	-15,379.69	597.40	0.00	0.00	0.00	0.00	REGNIER FARMS 1C

Database:	EDM 5000.14 Single User Db	Local Co-ordinate Reference:	Well REGNIER FARMS 1G-19H-B268
Company:	Crestone Peak Resources	TVD Reference:	WELL @ 4988.00usft (Original Well Elev)
Project:	Sec 19 T2N-R68W	MD Reference:	WELL @ 4988.00usft (Original Well Elev)
Site:	Regnier Farms Pad	North Reference:	True
Well:	REGNIER FARMS 1G-19H-B268	Survey Calculation Method:	Minimum Curvature
Wellbore:	Wellbore #1		
Design:	Design #1 22Mar18 kjs		

Planned Survey									
Measured Depth (usft)	Inclination (°)	Azimuth (°)	Vertical Depth (usft)	+N/-S (usft)	+E/-W (usft)	Map Northing (usft)	Map Easting (usft)	Latitude	Longitude
0.00	0.00	0.00	0.00	0.00	0.00	1,290,970.413	3,127,757.131	40.131204	-105.043094
200.00	0.00	0.00	200.00	0.00	0.00	1,290,970.413	3,127,757.131	40.131204	-105.043094
Start Build 2.00									
400.00	4.00	56.57	399.84	3.84	5.82	1,290,974.287	3,127,762.936	40.131214	-105.043073
480.54	5.61	56.57	480.09	7.56	11.45	1,290,978.032	3,127,768.547	40.131225	-105.043053
Hold 5.61 Inc, 56.57 Az									
600.00	5.61	56.57	598.98	13.99	21.20	1,290,984.516	3,127,778.262	40.131242	-105.043018
800.00	5.61	56.57	798.02	24.77	37.52	1,290,995.371	3,127,794.526	40.131272	-105.042960
1,000.00	5.61	56.57	997.06	35.54	53.84	1,291,006.227	3,127,810.789	40.131301	-105.042901
1,200.00	5.61	56.57	1,196.11	46.31	70.16	1,291,017.082	3,127,827.053	40.131331	-105.042843
1,400.00	5.61	56.57	1,395.15	57.08	86.48	1,291,027.937	3,127,843.317	40.131361	-105.042785
1,600.00	5.61	56.57	1,594.19	67.85	102.80	1,291,038.793	3,127,859.581	40.131390	-105.042726
1,800.00	5.61	56.57	1,793.23	78.62	119.12	1,291,049.648	3,127,875.845	40.131420	-105.042668
2,000.00	5.61	56.57	1,992.27	89.39	135.44	1,291,060.503	3,127,892.109	40.131449	-105.042610
2,200.00	5.61	56.57	2,191.31	100.17	151.76	1,291,071.358	3,127,908.372	40.131479	-105.042551
2,400.00	5.61	56.57	2,390.36	110.94	168.08	1,291,082.214	3,127,924.636	40.131508	-105.042493
2,600.00	5.61	56.57	2,589.40	121.71	184.40	1,291,093.069	3,127,940.900	40.131538	-105.042434
2,800.00	5.61	56.57	2,788.44	132.48	200.72	1,291,103.924	3,127,957.164	40.131568	-105.042376
3,000.00	5.61	56.57	2,987.48	143.25	217.04	1,291,114.780	3,127,973.428	40.131597	-105.042318
3,200.00	5.61	56.57	3,186.52	154.02	233.36	1,291,125.635	3,127,989.692	40.131627	-105.042259
3,400.00	5.61	56.57	3,385.57	164.79	249.68	1,291,136.490	3,128,005.955	40.131656	-105.042201
3,600.00	5.61	56.57	3,584.61	175.56	266.00	1,291,147.346	3,128,022.219	40.131686	-105.042143
3,800.00	5.61	56.57	3,783.65	186.34	282.32	1,291,158.201	3,128,038.483	40.131715	-105.042084
4,000.00	5.61	56.57	3,982.69	197.11	298.64	1,291,169.056	3,128,054.747	40.131745	-105.042026
4,200.00	5.61	56.57	4,181.73	207.88	314.95	1,291,179.911	3,128,071.011	40.131774	-105.041967
4,400.00	5.61	56.57	4,380.77	218.65	331.27	1,291,190.767	3,128,087.275	40.131804	-105.041909
4,600.00	5.61	56.57	4,579.82	229.42	347.59	1,291,201.622	3,128,103.538	40.131834	-105.041851
4,800.00	5.61	56.57	4,778.86	240.19	363.91	1,291,212.477	3,128,119.802	40.131863	-105.041792
5,000.00	5.61	56.57	4,977.90	250.96	380.23	1,291,223.333	3,128,136.066	40.131893	-105.041734
5,200.00	5.61	56.57	5,176.94	261.74	396.55	1,291,234.188	3,128,152.330	40.131922	-105.041676
5,400.00	5.61	56.57	5,375.98	272.51	412.87	1,291,245.043	3,128,168.594	40.131952	-105.041617
5,600.00	5.61	56.57	5,575.03	283.28	429.19	1,291,255.898	3,128,184.858	40.131981	-105.041559
5,800.00	5.61	56.57	5,774.07	294.05	445.51	1,291,266.754	3,128,201.121	40.132011	-105.041501
6,000.00	5.61	56.57	5,973.11	304.82	461.83	1,291,277.609	3,128,217.385	40.132041	-105.041442
6,200.00	5.61	56.57	6,172.15	315.59	478.15	1,291,288.464	3,128,233.649	40.132070	-105.041384
6,400.00	5.61	56.57	6,371.19	326.36	494.47	1,291,299.320	3,128,249.913	40.132100	-105.041325
6,583.12	5.61	56.57	6,553.43	336.23	509.41	1,291,309.259	3,128,264.804	40.132127	-105.041272
KOP 8/100									
6,600.00	5.03	69.78	6,570.24	336.94	510.80	1,291,309.976	3,128,266.184	40.132129	-105.041267
6,800.00	15.14	160.50	6,767.67	315.20	527.86	1,291,288.327	3,128,283.360	40.132069	-105.041206
7,000.00	30.73	170.38	6,951.35	239.70	545.23	1,291,212.922	3,128,301.121	40.131862	-105.041144
7,200.00	46.58	173.92	7,107.06	116.30	561.57	1,291,089.603	3,128,318.090	40.131523	-105.041086
7,400.00	62.49	175.96	7,222.73	-45.46	575.60	1,290,927.923	3,128,332.954	40.131079	-105.041035
7,600.00	78.43	177.47	7,289.40	-233.03	586.24	1,290,740.410	3,128,344.559	40.130564	-105.040997
7,745.11	90.00	178.45	7,304.00	-377.06	591.35	1,290,596.404	3,128,350.417	40.130169	-105.040979
LP 90 Inc, 178.45 Az									
7,800.00	90.00	178.45	7,304.00	-431.93	592.84	1,290,541.543	3,128,352.185	40.130018	-105.040974
8,000.00	90.00	178.45	7,304.00	-631.86	598.25	1,290,341.647	3,128,358.625	40.129469	-105.040954
8,200.00	90.00	178.45	7,304.00	-831.78	603.66	1,290,141.751	3,128,365.065	40.128920	-105.040935
8,400.00	90.00	178.45	7,304.00	-1,031.71	609.07	1,289,941.855	3,128,371.505	40.128372	-105.040916
8,600.00	90.00	178.45	7,304.00	-1,231.64	614.48	1,289,741.958	3,128,377.945	40.127823	-105.040896
8,800.00	90.00	178.45	7,304.00	-1,431.56	619.89	1,289,542.062	3,128,384.384	40.127274	-105.040877
9,000.00	90.00	178.45	7,304.00	-1,631.49	625.29	1,289,342.166	3,128,390.824	40.126725	-105.040858
9,200.00	90.00	178.45	7,304.00	-1,831.42	630.70	1,289,142.269	3,128,397.264	40.126176	-105.040838

Database:	EDM 5000.14 Single User Db	Local Co-ordinate Reference:	Well REGNIER FARMS 1G-19H-B268
Company:	Crestone Peak Resources	TVD Reference:	WELL @ 4988.00usft (Original Well Elev)
Project:	Sec 19 T2N-R68W	MD Reference:	WELL @ 4988.00usft (Original Well Elev)
Site:	Regnier Farms Pad	North Reference:	True
Well:	REGNIER FARMS 1G-19H-B268	Survey Calculation Method:	Minimum Curvature
Wellbore:	Wellbore #1		
Design:	Design #1 22Mar18 kjs		

Planned Survey										
Measured Depth (usft)	Inclination (°)	Azimuth (°)	Vertical Depth (usft)	+N/-S (usft)	+E/-W (usft)	Map Northing (usft)	Map Easting (usft)	Latitude	Longitude	
9,400.00	90.00	178.45	7,304.00	-2,031.34	636.11	1,288,942.373	3,128,403.704	40.125627	-105.040819	
9,600.00	90.00	178.45	7,304.00	-2,231.27	641.52	1,288,742.477	3,128,410.144	40.125079	-105.040800	
9,800.00	90.00	178.45	7,304.00	-2,431.20	646.93	1,288,542.581	3,128,416.584	40.124530	-105.040780	
10,000.00	90.00	178.45	7,304.00	-2,631.12	652.34	1,288,342.684	3,128,423.024	40.123981	-105.040761	
10,200.00	90.00	178.45	7,304.00	-2,831.05	657.75	1,288,142.788	3,128,429.464	40.123432	-105.040742	
10,400.00	90.00	178.45	7,304.00	-3,030.98	663.16	1,287,942.892	3,128,435.904	40.122883	-105.040722	
10,600.00	90.00	178.45	7,304.00	-3,230.91	668.57	1,287,742.995	3,128,442.344	40.122334	-105.040703	
10,800.00	90.00	178.45	7,304.00	-3,430.83	673.98	1,287,543.099	3,128,448.784	40.121786	-105.040684	
11,000.00	90.00	178.45	7,304.00	-3,630.76	679.39	1,287,343.203	3,128,455.224	40.121237	-105.040664	
11,200.00	90.00	178.45	7,304.00	-3,830.69	684.80	1,287,143.307	3,128,461.664	40.120688	-105.040645	
11,400.00	90.00	178.45	7,304.00	-4,030.61	690.21	1,286,943.410	3,128,468.104	40.120139	-105.040626	
11,600.00	90.00	178.45	7,304.00	-4,230.54	695.62	1,286,743.514	3,128,474.543	40.119590	-105.040607	
11,800.00	90.00	178.45	7,304.00	-4,430.47	701.03	1,286,543.618	3,128,480.983	40.119042	-105.040587	
12,000.00	90.00	178.45	7,304.00	-4,630.39	706.44	1,286,343.721	3,128,487.423	40.118493	-105.040568	
12,200.00	90.00	178.45	7,304.00	-4,830.32	711.85	1,286,143.825	3,128,493.863	40.117944	-105.040549	
12,400.00	90.00	178.45	7,304.00	-5,030.25	717.26	1,285,943.929	3,128,500.303	40.117395	-105.040529	
12,600.00	90.00	178.45	7,304.00	-5,230.17	722.67	1,285,744.033	3,128,506.743	40.116846	-105.040510	
12,800.00	90.00	178.45	7,304.00	-5,430.10	728.08	1,285,544.136	3,128,513.183	40.116297	-105.040491	
13,000.00	90.00	178.45	7,304.00	-5,630.03	733.49	1,285,344.240	3,128,519.623	40.115749	-105.040471	
13,200.00	90.00	178.45	7,304.00	-5,829.95	738.90	1,285,144.344	3,128,526.063	40.115200	-105.040452	
13,400.00	90.00	178.45	7,304.00	-6,029.88	744.31	1,284,944.447	3,128,532.503	40.114651	-105.040433	
13,600.00	90.00	178.45	7,304.00	-6,229.81	749.72	1,284,744.551	3,128,538.943	40.114102	-105.040413	
13,800.00	90.00	178.45	7,304.00	-6,429.73	755.13	1,284,544.655	3,128,545.383	40.113553	-105.040394	
14,000.00	90.00	178.45	7,304.00	-6,629.66	760.54	1,284,344.759	3,128,551.823	40.113004	-105.040375	
14,200.00	90.00	178.45	7,304.00	-6,829.59	765.95	1,284,144.862	3,128,558.263	40.112456	-105.040355	
14,400.00	90.00	178.45	7,304.00	-7,029.51	771.36	1,283,944.966	3,128,564.702	40.111907	-105.040336	
14,600.00	90.00	178.45	7,304.00	-7,229.44	776.77	1,283,745.070	3,128,571.142	40.111358	-105.040317	
14,800.00	90.00	178.45	7,304.00	-7,429.37	782.18	1,283,545.174	3,128,577.582	40.110809	-105.040297	
15,000.00	90.00	178.45	7,304.00	-7,629.30	787.59	1,283,345.277	3,128,584.022	40.110260	-105.040278	
15,200.00	90.00	178.45	7,304.00	-7,829.22	793.00	1,283,145.381	3,128,590.462	40.109711	-105.040259	
15,400.00	90.00	178.45	7,304.00	-8,029.15	798.41	1,282,945.485	3,128,596.902	40.109163	-105.040239	
15,600.00	90.00	178.45	7,304.00	-8,229.08	803.82	1,282,745.588	3,128,603.342	40.108614	-105.040220	
15,800.00	90.00	178.45	7,304.00	-8,429.00	809.23	1,282,545.692	3,128,609.782	40.108065	-105.040201	
16,000.00	90.00	178.45	7,304.00	-8,628.93	814.64	1,282,345.796	3,128,616.222	40.107516	-105.040181	
16,200.00	90.00	178.45	7,304.00	-8,828.86	820.05	1,282,145.900	3,128,622.662	40.106967	-105.040162	
16,400.00	90.00	178.45	7,304.00	-9,028.78	825.46	1,281,946.003	3,128,629.102	40.106418	-105.040143	
16,600.00	90.00	178.45	7,304.00	-9,228.71	830.87	1,281,746.107	3,128,635.542	40.105870	-105.040124	
16,745.11	90.00	178.45	7,304.00	-9,373.77	834.79	1,281,601.071	3,128,640.214	40.105471	-105.040109	
Start Turn 2/100										
16,800.00	90.00	179.55	7,304.00	-9,428.65	835.75	1,281,546.197	3,128,641.456	40.105321	-105.040106	
16,938.91	90.00	182.33	7,304.00	-9,567.53	833.48	1,281,407.310	3,128,639.900	40.104939	-105.040114	
Hold 182.33 Az										
17,000.00	90.00	182.33	7,304.00	-9,628.57	831.00	1,281,346.258	3,128,637.736	40.104772	-105.040123	
17,200.00	90.00	182.33	7,304.00	-9,828.40	822.89	1,281,146.383	3,128,630.649	40.104223	-105.040152	
17,400.00	90.00	182.33	7,304.00	-10,028.24	814.77	1,280,946.509	3,128,623.561	40.103675	-105.040181	
17,600.00	90.00	182.33	7,304.00	-10,228.07	806.65	1,280,746.635	3,128,616.474	40.103126	-105.040210	
17,800.00	90.00	182.33	7,304.00	-10,427.91	798.54	1,280,546.760	3,128,609.387	40.102578	-105.040239	
18,000.00	90.00	182.33	7,304.00	-10,627.74	790.42	1,280,346.886	3,128,602.300	40.102029	-105.040268	
18,200.00	90.00	182.33	7,304.00	-10,827.58	782.30	1,280,147.012	3,128,595.213	40.101480	-105.040297	
18,400.00	90.00	182.33	7,304.00	-11,027.41	774.18	1,279,947.137	3,128,588.126	40.100932	-105.040326	
18,600.00	90.00	182.33	7,304.00	-11,227.25	766.07	1,279,747.263	3,128,581.038	40.100383	-105.040355	
18,800.00	90.00	182.33	7,304.00	-11,427.08	757.95	1,279,547.388	3,128,573.951	40.099835	-105.040384	
19,000.00	90.00	182.33	7,304.00	-11,626.92	749.83	1,279,347.514	3,128,566.864	40.099286	-105.040413	
19,200.00	90.00	182.33	7,304.00	-11,826.75	741.72	1,279,147.640	3,128,559.777	40.098738	-105.040443	

Database:	EDM 5000.14 Single User Db	Local Co-ordinate Reference:	Well REGNIER FARMS 1G-19H-B268
Company:	Crestone Peak Resources	TVD Reference:	WELL @ 4988.00usft (Original Well Elev)
Project:	Sec 19 T2N-R68W	MD Reference:	WELL @ 4988.00usft (Original Well Elev)
Site:	Regnier Farms Pad	North Reference:	True
Well:	REGNIER FARMS 1G-19H-B268	Survey Calculation Method:	Minimum Curvature
Wellbore:	Wellbore #1		
Design:	Design #1 22Mar18 kjs		

Planned Survey									
Measured Depth (usft)	Inclination (°)	Azimuth (°)	Vertical Depth (usft)	+N/-S (usft)	+E/-W (usft)	Map Northing (usft)	Map Easting (usft)	Latitude	Longitude
19,400.00	90.00	182.33	7,304.00	-12,026.59	733.60	1,278,947.765	3,128,552.690	40.098189	-105.040472
19,600.00	90.00	182.33	7,304.00	-12,226.42	725.48	1,278,747.891	3,128,545.603	40.097640	-105.040501
19,800.00	90.00	182.33	7,304.00	-12,426.26	717.37	1,278,548.016	3,128,538.516	40.097092	-105.040530
20,000.00	90.00	182.33	7,304.00	-12,626.09	709.25	1,278,348.142	3,128,531.428	40.096543	-105.040559
20,200.00	90.00	182.33	7,304.00	-12,825.93	701.13	1,278,148.268	3,128,524.341	40.095995	-105.040588
20,400.00	90.00	182.33	7,304.00	-13,025.76	693.02	1,277,948.393	3,128,517.254	40.095446	-105.040617
20,600.00	90.00	182.33	7,304.00	-13,225.60	684.90	1,277,748.519	3,128,510.167	40.094898	-105.040646
20,800.00	90.00	182.33	7,304.00	-13,425.43	676.78	1,277,548.645	3,128,503.080	40.094349	-105.040675
21,000.00	90.00	182.33	7,304.00	-13,625.27	668.66	1,277,348.770	3,128,495.993	40.093800	-105.040704
21,200.00	90.00	182.33	7,304.00	-13,825.10	660.55	1,277,148.896	3,128,488.906	40.093252	-105.040733
21,400.00	90.00	182.33	7,304.00	-14,024.94	652.43	1,276,949.021	3,128,481.818	40.092703	-105.040762
21,600.00	90.00	182.33	7,304.00	-14,224.78	644.31	1,276,749.147	3,128,474.731	40.092155	-105.040791
21,800.00	90.00	182.33	7,304.00	-14,424.61	636.20	1,276,549.273	3,128,467.644	40.091606	-105.040820
22,000.00	90.00	182.33	7,304.00	-14,624.45	628.08	1,276,349.398	3,128,460.557	40.091057	-105.040849
22,200.00	90.00	182.33	7,304.00	-14,824.28	619.96	1,276,149.524	3,128,453.470	40.090509	-105.040878
22,400.00	90.00	182.33	7,304.00	-15,024.12	611.85	1,275,949.649	3,128,446.383	40.089960	-105.040907
22,600.00	90.00	182.33	7,304.00	-15,223.95	603.73	1,275,749.775	3,128,439.296	40.089412	-105.040936
22,755.86	90.00	182.33	7,304.00	-15,379.69	597.40	1,275,594.010	3,128,433.772	40.088984	-105.040959
TD at 22755.86									

Design Targets									
Target Name	Dip Angle (°)	Dip Dir. (°)	TVD (usft)	+N/-S (usft)	+E/-W (usft)	Northing (usft)	Easting (usft)	Latitude	Longitude
REGNIER FARMS 1G-1 - hit/miss target - Shape - Point	0.00	0.00	7,304.00	-377.06	591.35	1,290,596.404	3,128,350.417	40.130169	-105.040979
REGNIER FARMS 1G-1 - plan hits target center - Point	0.00	0.00	7,304.00	-15,379.69	597.40	1,275,594.010	3,128,433.772	40.088984	-105.040959

Plan Annotations				
Measured Depth (usft)	Vertical Depth (usft)	+N/-S (usft)	+E/-W (usft)	Comment
200.00	200.00	0.00	0.00	Start Build 2.00
480.54	480.09	7.56	11.45	Hold 5.61 Inc, 56.57 Az
6,583.12	6,553.43	336.23	509.41	KOP 8/100
7,745.11	7,304.00	-377.06	591.35	LP 90 Inc, 178.45 Az
16,745.11	7,304.00	-9,373.77	834.79	Start Turn 2/100
16,938.91	7,304.00	-9,567.53	833.48	Hold 182.33 Az
22,755.86	7,304.00	-15,379.69	597.40	TD at 22755.86