



Crestone Peak Resources

Well Name:

REGNIER FARMS 1F-19H-B268

Project Name:

Sec 19 T2N-R68W

Pad Name:

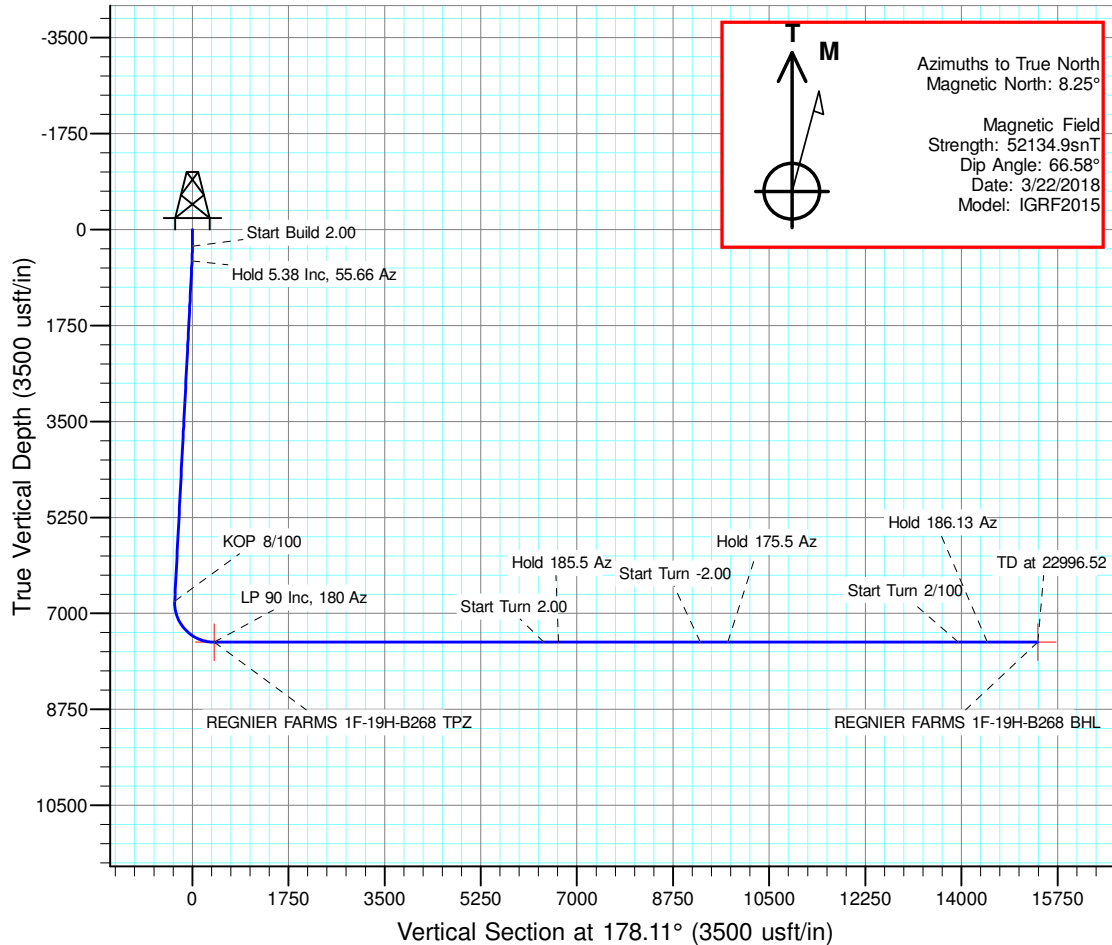
Regnier Farms Pad

ANNOTATIONS

MD	Inc	Azi	TVD	+N/-S	+E/-W	VSect	Departure	Annotation
300.00	0.00	0.00	300.00	0.00	0.00	0.00	0.00	Start Build 2.00
569.07	5.38	55.66	568.68	7.12	10.43	-6.78	12.63	Hold 5.38 Inc, 55.66 Az
6799.04	5.38	55.66	6771.18	336.73	492.86	-320.30	596.91	KOP 8/100
7961.95	90.00	180.00	7523.00	-378.46	551.34	396.43	1324.15	LP 90 Inc, 180 Az
13961.95	90.00	180.00	7523.00	-6378.46	551.34	6393.17	7324.15	Start Turn 2.00
14236.95	90.00	185.50	7523.00	-6653.04	538.15	6667.17	7599.15	Hold 185.5 Az
16836.95	90.00	185.50	7523.00	-9241.07	288.95	9245.57	10199.15	Start Turn -2.00
17336.95	90.00	175.50	7523.00	-9740.42	284.59	9744.50	10699.15	Hold 175.5 Az
21536.95	90.00	175.50	7523.00	-13927.47	614.12	13940.14	14899.15	Start Turn 2/100
22068.65	90.00	186.13	7523.00	-14458.36	606.55	14470.50	15430.85	Hold 186.13 Az
22996.52	90.00	186.13	7523.00	-15380.92	507.40	15389.28	16358.73	TD at 22996.52

DESIGN TARGET DETAILS

Name	TVD	+N/-S	+E/-W	Northing	Easting	Latitude	Longitude	Shape
REGNIER FARMS 1F-19H-B268 BHL	7523.00	-15380.92	507.40	1275591.883	3128333.778	40.088980	-105.041316	Point
REGNIER FARMS 1F-19H-B268 TPZ	7523.00	-378.46	551.34	1290594.364	3128300.419	40.130164	-105.041158	Point

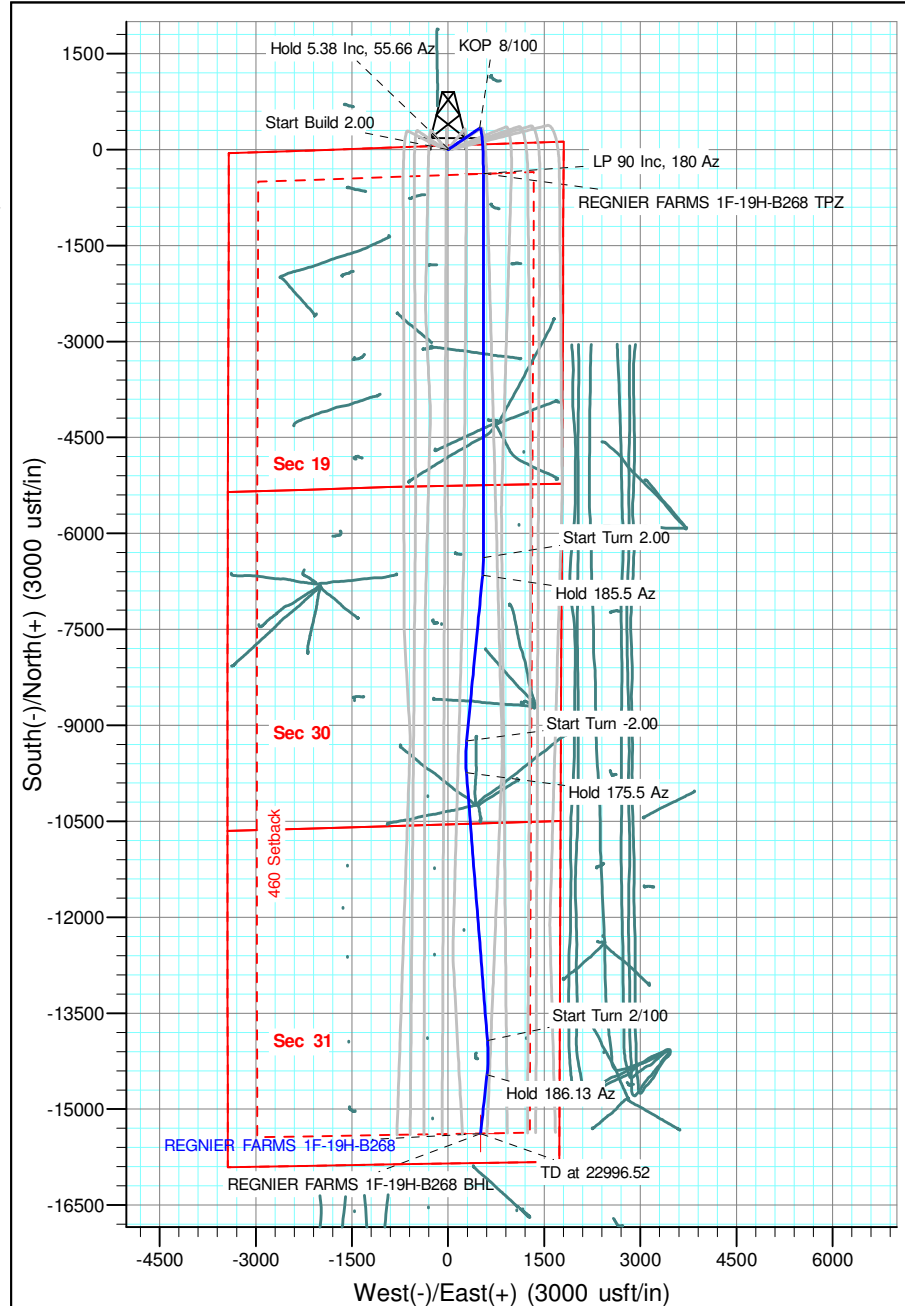


Geodetic Datum:

North American Datum 1983
US State Plane 1983, Colorado Northern Zone

Elevation:

Ground Elevation: 4966.00
KB Elevation: WELL @ 4989.00usft (Original Well Elev)





Crestone Peak Resources

Sec 19 T2N-R68W

Regnier Farms Pad

REGNIER FARMS 1F-19H-B268

Wellbore #1

Plan: Design #1 22Mar18 kjs

Standard Planning Report - Geographic

03 April, 2018

Database:	EDM 5000.14 Single User Db	Local Co-ordinate Reference:	Well REGNIER FARMS 1F-19H-B268
Company:	Crestone Peak Resources	TVD Reference:	WELL @ 4989.00usft (Original Well Elev)
Project:	Sec 19 T2N-R68W	MD Reference:	WELL @ 4989.00usft (Original Well Elev)
Site:	Regnier Farms Pad	North Reference:	True
Well:	REGNIER FARMS 1F-19H-B268	Survey Calculation Method:	Minimum Curvature
Wellbore:	Wellbore #1		
Design:	Design #1 22Mar18 kjs		

Project	Sec 19 T2N-R68W, Weld County, CO		
Map System:	US State Plane 1983	System Datum:	Mean Sea Level
Geo Datum:	North American Datum 1983		
Map Zone:	Colorado Northern Zone		

Site		Regnier Farms Pad			
Site Position:		Northing:	1,290,967.816 usft	Latitude:	40.131198
From:	Map	Easting:	3,127,697.187 usft	Longitude:	-105.043308
Position Uncertainty:	0.00 usft	Slot Radius:	13-3/16 "	Grid Convergence:	0.30 °

Well	REGNIER FARMS 1F-19H-B268					
Well Position	+N/-S	0.00 usft	Northing:	1,290,969.980 usft	Latitude:	40.131203
	+E/-W	0.00 usft	Easting:	3,127,747.140 usft	Longitude:	-105.043129
Position Uncertainty		0.00 usft	Wellhead Elevation:		Ground Level:	4,966.00 usft

Wellbore	Wellbore #1				
Magnetics	Model Name	Sample Date	Declination (°)	Dip Angle (°)	Field Strength (nT)
	IGRF2015	3/22/2018	8.25	66.58	52,134.85589573

Design	Design #1 22Mar18 kjs			
Audit Notes:				
Version:	Phase:	PLAN	Tie On Depth:	0.00
Vertical Section:	Depth From (TVD) (usft)	+N/-S (usft)	+E/-W (usft)	Direction (°)
	0.00	0.00	0.00	178.11

Plan Survey Tool Program	Date	4/3/2018		
Depth From (usft)	Depth To (usft)	Survey (Wellbore)	Tool Name	Remarks
1	0.00	22,996.52 Design #1 22Mar18 kjs (Wellbore)	MWD	
			OWSG MWD - Standard	

Database:	EDM 5000.14 Single User Db	Local Co-ordinate Reference:	Well REGNIER FARMS 1F-19H-B268
Company:	Crestone Peak Resources	TVD Reference:	WELL @ 4989.00usft (Original Well Elev)
Project:	Sec 19 T2N-R68W	MD Reference:	WELL @ 4989.00usft (Original Well Elev)
Site:	Regnier Farms Pad	North Reference:	True
Well:	REGNIER FARMS 1F-19H-B268	Survey Calculation Method:	Minimum Curvature
Wellbore:	Wellbore #1		
Design:	Design #1 22Mar18 kjs		

Plan Sections										
Measured Depth (usft)	Inclination (°)	Azimuth (°)	Vertical Depth (usft)	+N/-S (usft)	+E/-W (usft)	Dogleg Rate (°/100usft)	Build Rate (°/100usft)	Turn Rate (°/100usft)	TFO (°)	Target
0.00	0.00	0.00	0.00	0.00	0.00	0.00	0.00	0.00	0.00	
300.00	0.00	0.00	300.00	0.00	0.00	0.00	0.00	0.00	0.00	
569.07	5.38	55.66	568.68	7.12	10.43	2.00	2.00	0.00	55.66	
6,799.04	5.38	55.66	6,771.18	336.73	492.86	0.00	0.00	0.00	0.00	
7,961.95	90.00	180.00	7,523.00	-378.46	551.34	8.00	7.28	10.69	124.22	REGNIER FARMS 1F
13,961.95	90.00	180.00	7,523.00	-6,378.46	551.34	0.00	0.00	0.00	0.00	
14,236.95	90.00	185.50	7,523.00	-6,653.04	538.15	2.00	0.00	2.00	90.00	
16,836.95	90.00	185.50	7,523.00	-9,241.07	288.95	0.00	0.00	0.00	0.00	
17,336.95	90.00	175.50	7,523.00	-9,740.42	284.59	2.00	0.00	-2.00	-90.00	
21,536.95	90.00	175.50	7,523.00	-13,927.47	614.12	0.00	0.00	0.00	0.00	
22,068.65	90.00	186.13	7,523.00	-14,458.36	606.55	2.00	0.00	2.00	90.00	
22,996.52	90.00	186.13	7,523.00	-15,380.92	507.40	0.00	0.00	0.00	0.00	REGNIER FARMS 1F

Database:	EDM 5000.14 Single User Db	Local Co-ordinate Reference:	Well REGNIER FARMS 1F-19H-B268
Company:	Crestone Peak Resources	TVD Reference:	WELL @ 4989.00usft (Original Well Elev)
Project:	Sec 19 T2N-R68W	MD Reference:	WELL @ 4989.00usft (Original Well Elev)
Site:	Regnier Farms Pad	North Reference:	True
Well:	REGNIER FARMS 1F-19H-B268	Survey Calculation Method:	Minimum Curvature
Wellbore:	Wellbore #1		
Design:	Design #1 22Mar18 kjs		

Planned Survey									
Measured Depth (usft)	Inclination (°)	Azimuth (°)	Vertical Depth (usft)	+N/-S (usft)	+E/-W (usft)	Map Northing (usft)	Map Easting (usft)	Latitude	Longitude
0.00	0.00	0.00	0.00	0.00	0.00	1,290,969.980	3,127,747.140	40.131203	-105.043130
200.00	0.00	0.00	200.00	0.00	0.00	1,290,969.980	3,127,747.140	40.131203	-105.043130
300.00	0.00	0.00	300.00	0.00	0.00	1,290,969.980	3,127,747.140	40.131203	-105.043130
Start Build 2.00									
400.00	2.00	55.66	399.98	0.98	1.44	1,290,970.972	3,127,748.576	40.131205	-105.043124
569.07	5.38	55.66	568.68	7.12	10.43	1,290,977.156	3,127,757.529	40.131222	-105.043092
Hold 5.38 Inc, 55.66 Az									
600.00	5.38	55.66	599.47	8.76	12.82	1,290,978.805	3,127,759.916	40.131227	-105.043084
800.00	5.38	55.66	798.59	19.34	28.31	1,290,989.466	3,127,775.349	40.131256	-105.043028
1,000.00	5.38	55.66	997.71	29.92	43.80	1,291,000.127	3,127,790.782	40.131285	-105.042973
1,200.00	5.38	55.66	1,196.82	40.50	59.28	1,291,010.788	3,127,806.214	40.131314	-105.042918
1,400.00	5.38	55.66	1,395.94	51.09	74.77	1,291,021.449	3,127,821.647	40.131343	-105.042862
1,600.00	5.38	55.66	1,595.06	61.67	90.26	1,291,032.110	3,127,837.080	40.131372	-105.042807
1,800.00	5.38	55.66	1,794.18	72.25	105.75	1,291,042.772	3,127,852.513	40.131401	-105.042751
2,000.00	5.38	55.66	1,993.30	82.83	121.23	1,291,053.433	3,127,867.946	40.131430	-105.042696
2,200.00	5.38	55.66	2,192.42	93.41	136.72	1,291,064.094	3,127,883.378	40.131459	-105.042641
2,400.00	5.38	55.66	2,391.53	103.99	152.21	1,291,074.755	3,127,898.811	40.131488	-105.042585
2,600.00	5.38	55.66	2,590.65	114.57	167.70	1,291,085.416	3,127,914.244	40.131517	-105.042530
2,800.00	5.38	55.66	2,789.77	125.16	183.18	1,291,096.077	3,127,929.677	40.131546	-105.042474
3,000.00	5.38	55.66	2,988.89	135.74	198.67	1,291,106.738	3,127,945.110	40.131575	-105.042419
3,200.00	5.38	55.66	3,188.01	146.32	214.16	1,291,117.399	3,127,960.542	40.131604	-105.042364
3,400.00	5.38	55.66	3,387.13	156.90	229.65	1,291,128.060	3,127,975.975	40.131633	-105.042308
3,600.00	5.38	55.66	3,586.25	167.48	245.13	1,291,138.721	3,127,991.408	40.131663	-105.042253
3,800.00	5.38	55.66	3,785.36	178.06	260.62	1,291,149.382	3,128,006.841	40.131692	-105.042198
4,000.00	5.38	55.66	3,984.48	188.64	276.11	1,291,160.043	3,128,022.274	40.131721	-105.042142
4,200.00	5.38	55.66	4,183.60	199.23	291.60	1,291,170.704	3,128,037.706	40.131750	-105.042087
4,400.00	5.38	55.66	4,382.72	209.81	307.08	1,291,181.366	3,128,053.139	40.131779	-105.042031
4,600.00	5.38	55.66	4,581.84	220.39	322.57	1,291,192.027	3,128,068.572	40.131808	-105.041976
4,800.00	5.38	55.66	4,780.96	230.97	338.06	1,291,202.688	3,128,084.005	40.131837	-105.041921
5,000.00	5.38	55.66	4,980.07	241.55	353.55	1,291,213.349	3,128,099.438	40.131866	-105.041865
5,200.00	5.38	55.66	5,179.19	252.13	369.03	1,291,224.010	3,128,114.871	40.131895	-105.041810
5,400.00	5.38	55.66	5,378.31	262.71	384.52	1,291,234.671	3,128,130.303	40.131924	-105.041754
5,600.00	5.38	55.66	5,577.43	273.30	400.01	1,291,245.332	3,128,145.736	40.131953	-105.041699
5,800.00	5.38	55.66	5,776.55	283.88	415.50	1,291,255.993	3,128,161.169	40.131982	-105.041644
6,000.00	5.38	55.66	5,975.67	294.46	430.98	1,291,266.654	3,128,176.602	40.132011	-105.041588
6,200.00	5.38	55.66	6,174.79	305.04	446.47	1,291,277.315	3,128,192.035	40.132040	-105.041533
6,400.00	5.38	55.66	6,373.90	315.62	461.96	1,291,287.976	3,128,207.467	40.132069	-105.041477
6,600.00	5.38	55.66	6,573.02	326.20	477.45	1,291,298.637	3,128,222.900	40.132098	-105.041422
6,799.04	5.38	55.66	6,771.18	336.73	492.86	1,291,309.247	3,128,238.259	40.132127	-105.041367
KOP 8/100									
6,800.00	5.34	56.34	6,772.14	336.78	492.93	1,291,309.298	3,128,238.333	40.132127	-105.041367
7,000.00	13.77	161.49	6,970.12	319.25	508.33	1,291,291.849	3,128,253.822	40.132079	-105.041312
7,200.00	29.35	172.05	7,155.62	247.67	522.76	1,291,220.339	3,128,268.619	40.131883	-105.041260
7,400.00	45.22	175.57	7,314.25	127.57	535.10	1,291,100.309	3,128,281.576	40.131553	-105.041216
7,600.00	61.14	177.54	7,433.74	-31.73	544.39	1,290,941.058	3,128,291.690	40.131116	-105.041183
7,800.00	77.08	178.98	7,504.82	-217.89	549.92	1,290,754.924	3,128,298.178	40.130605	-105.041163
7,961.95	90.00	180.00	7,523.00	-378.46	551.34	1,290,594.364	3,128,300.419	40.130164	-105.041158
LP 90 Inc, 180 Az									
8,000.00	90.00	180.00	7,523.00	-416.52	551.34	1,290,556.310	3,128,300.615	40.130059	-105.041158
8,200.00	90.00	180.00	7,523.00	-616.52	551.34	1,290,356.313	3,128,301.646	40.129510	-105.041158
8,400.00	90.00	180.00	7,523.00	-816.52	551.34	1,290,156.315	3,128,302.676	40.128961	-105.041158
8,600.00	90.00	180.00	7,523.00	-1,016.52	551.34	1,289,956.318	3,128,303.707	40.128412	-105.041158
8,800.00	90.00	180.00	7,523.00	-1,216.52	551.34	1,289,756.321	3,128,304.737	40.127863	-105.041158
9,000.00	90.00	180.00	7,523.00	-1,416.52	551.34	1,289,556.323	3,128,305.768	40.127314	-105.041158

Database:	EDM 5000.14 Single User Db	Local Co-ordinate Reference:	Well REGNIER FARMS 1F-19H-B268
Company:	Crestone Peak Resources	TVD Reference:	WELL @ 4989.00usft (Original Well Elev)
Project:	Sec 19 T2N-R68W	MD Reference:	WELL @ 4989.00usft (Original Well Elev)
Site:	Regnier Farms Pad	North Reference:	True
Well:	REGNIER FARMS 1F-19H-B268	Survey Calculation Method:	Minimum Curvature
Wellbore:	Wellbore #1		
Design:	Design #1 22Mar18 kjs		

Planned Survey									
Measured Depth (usft)	Inclination (°)	Azimuth (°)	Vertical Depth (usft)	+N/-S (usft)	+E/-W (usft)	Map Northing (usft)	Map Easting (usft)	Latitude	Longitude
9,200.00	90.00	180.00	7,523.00	-1,616.52	551.34	1,289,356.326	3,128,306.798	40.126765	-105.041158
9,400.00	90.00	180.00	7,523.00	-1,816.52	551.34	1,289,156.329	3,128,307.829	40.126216	-105.041158
9,600.00	90.00	180.00	7,523.00	-2,016.52	551.34	1,288,956.331	3,128,308.859	40.125667	-105.041158
9,800.00	90.00	180.00	7,523.00	-2,216.52	551.34	1,288,756.334	3,128,309.889	40.125118	-105.041158
10,000.00	90.00	180.00	7,523.00	-2,416.52	551.34	1,288,556.337	3,128,310.920	40.124569	-105.041158
10,200.00	90.00	180.00	7,523.00	-2,616.52	551.34	1,288,356.339	3,128,311.950	40.124020	-105.041158
10,400.00	90.00	180.00	7,523.00	-2,816.52	551.34	1,288,156.342	3,128,312.981	40.123471	-105.041158
10,600.00	90.00	180.00	7,523.00	-3,016.52	551.34	1,287,956.345	3,128,314.011	40.122922	-105.041158
10,800.00	90.00	180.00	7,523.00	-3,216.52	551.34	1,287,756.347	3,128,315.042	40.122373	-105.041158
11,000.00	90.00	180.00	7,523.00	-3,416.52	551.34	1,287,556.350	3,128,316.072	40.121824	-105.041158
11,200.00	90.00	180.00	7,523.00	-3,616.52	551.34	1,287,356.353	3,128,317.102	40.121275	-105.041158
11,400.00	90.00	180.00	7,523.00	-3,816.52	551.34	1,287,156.355	3,128,318.133	40.120726	-105.041158
11,600.00	90.00	180.00	7,523.00	-4,016.52	551.34	1,286,956.358	3,128,319.163	40.120177	-105.041158
11,800.00	90.00	180.00	7,523.00	-4,216.52	551.34	1,286,756.361	3,128,320.194	40.119628	-105.041158
12,000.00	90.00	180.00	7,523.00	-4,416.52	551.34	1,286,556.363	3,128,321.224	40.119079	-105.041158
12,200.00	90.00	180.00	7,523.00	-4,616.52	551.34	1,286,356.366	3,128,322.255	40.118530	-105.041158
12,400.00	90.00	180.00	7,523.00	-4,816.52	551.34	1,286,156.369	3,128,323.285	40.117981	-105.041158
12,600.00	90.00	180.00	7,523.00	-5,016.52	551.34	1,285,956.371	3,128,324.315	40.117432	-105.041158
12,800.00	90.00	180.00	7,523.00	-5,216.52	551.34	1,285,756.374	3,128,325.346	40.116883	-105.041158
13,000.00	90.00	180.00	7,523.00	-5,416.52	551.34	1,285,556.377	3,128,326.376	40.116334	-105.041158
13,200.00	90.00	180.00	7,523.00	-5,616.52	551.34	1,285,356.379	3,128,327.407	40.115785	-105.041158
13,400.00	90.00	180.00	7,523.00	-5,816.52	551.34	1,285,156.382	3,128,328.437	40.115236	-105.041158
13,600.00	90.00	180.00	7,523.00	-6,016.52	551.34	1,284,956.385	3,128,329.468	40.114687	-105.041158
13,800.00	90.00	180.00	7,523.00	-6,216.52	551.34	1,284,756.387	3,128,330.498	40.114138	-105.041158
13,961.95	90.00	180.00	7,523.00	-6,378.46	551.34	1,284,594.444	3,128,331.332	40.113693	-105.041158
Start Turn 2.00									
14,000.00	90.00	180.76	7,523.00	-6,416.51	551.08	1,284,556.390	3,128,331.276	40.113588	-105.041159
14,200.00	90.00	184.76	7,523.00	-6,616.24	541.45	1,284,356.616	3,128,322.673	40.113040	-105.041194
14,236.95	90.00	185.50	7,523.00	-6,653.04	538.15	1,284,319.801	3,128,319.558	40.112939	-105.041206
Hold 185.5 Az									
14,400.00	90.00	185.50	7,523.00	-6,815.34	522.52	1,284,157.420	3,128,304.767	40.112494	-105.041261
14,600.00	90.00	185.50	7,523.00	-7,014.42	503.35	1,283,958.244	3,128,286.624	40.111947	-105.041330
14,800.00	90.00	185.50	7,523.00	-7,213.50	484.18	1,283,759.069	3,128,268.480	40.111401	-105.041399
15,000.00	90.00	185.50	7,523.00	-7,412.58	465.01	1,283,559.894	3,128,250.337	40.110854	-105.041467
15,200.00	90.00	185.50	7,523.00	-7,611.66	445.84	1,283,360.718	3,128,232.194	40.110308	-105.041536
15,400.00	90.00	185.50	7,523.00	-7,810.74	426.67	1,283,161.543	3,128,214.051	40.109761	-105.041604
15,600.00	90.00	185.50	7,523.00	-8,009.82	407.50	1,282,962.367	3,128,195.908	40.109215	-105.041673
15,800.00	90.00	185.50	7,523.00	-8,208.90	388.34	1,282,763.192	3,128,177.764	40.108668	-105.041741
16,000.00	90.00	185.50	7,523.00	-8,407.98	369.17	1,282,564.017	3,128,159.621	40.108122	-105.041810
16,200.00	90.00	185.50	7,523.00	-8,607.06	350.00	1,282,364.841	3,128,141.478	40.107575	-105.041878
16,400.00	90.00	185.50	7,523.00	-8,806.14	330.83	1,282,165.666	3,128,123.335	40.107029	-105.041947
16,600.00	90.00	185.50	7,523.00	-9,005.21	311.66	1,281,966.491	3,128,105.192	40.106482	-105.042015
16,800.00	90.00	185.50	7,523.00	-9,204.29	292.49	1,281,767.315	3,128,087.048	40.105936	-105.042084
16,836.95	90.00	185.50	7,523.00	-9,241.07	288.95	1,281,730.522	3,128,083.697	40.105835	-105.042097
Start Turn -2.00									
17,000.00	90.00	182.24	7,523.00	-9,403.73	277.95	1,281,567.807	3,128,073.533	40.105388	-105.042136
17,200.00	90.00	178.24	7,523.00	-9,603.69	277.11	1,281,367.848	3,128,073.729	40.104839	-105.042139
17,336.95	90.00	175.50	7,523.00	-9,740.42	284.59	1,281,231.160	3,128,081.912	40.104464	-105.042112
Hold 175.5 Az									
17,400.00	90.00	175.50	7,523.00	-9,803.28	289.54	1,281,168.326	3,128,087.183	40.104291	-105.042095
17,600.00	90.00	175.50	7,523.00	-10,002.66	305.23	1,280,969.026	3,128,103.902	40.103744	-105.042038
17,800.00	90.00	175.50	7,523.00	-10,202.04	320.92	1,280,769.726	3,128,120.621	40.103197	-105.041982
18,000.00	90.00	175.50	7,523.00	-10,401.43	336.61	1,280,570.426	3,128,137.339	40.102649	-105.041926
18,200.00	90.00	175.50	7,523.00	-10,600.81	352.31	1,280,371.126	3,128,154.058	40.102102	-105.041870

Database:	EDM 5000.14 Single User Db	Local Co-ordinate Reference:	Well REGNIER FARMS 1F-19H-B268
Company:	Crestone Peak Resources	TVD Reference:	WELL @ 4989.00usft (Original Well Elev)
Project:	Sec 19 T2N-R68W	MD Reference:	WELL @ 4989.00usft (Original Well Elev)
Site:	Regnier Farms Pad	North Reference:	True
Well:	REGNIER FARMS 1F-19H-B268	Survey Calculation Method:	Minimum Curvature
Wellbore:	Wellbore #1		
Design:	Design #1 22Mar18 kjs		

Planned Survey									
Measured Depth (usft)	Inclination (°)	Azimuth (°)	Vertical Depth (usft)	+N/-S (usft)	+E/-W (usft)	Map Northing (usft)	Map Easting (usft)	Latitude	Longitude
18,400.00	90.00	175.50	7,523.00	-10,800.19	368.00	1,280,171.826	3,128,170.777	40.101555	-105.041814
18,600.00	90.00	175.50	7,523.00	-10,999.58	383.69	1,279,972.526	3,128,187.496	40.101007	-105.041758
18,800.00	90.00	175.50	7,523.00	-11,198.96	399.38	1,279,773.226	3,128,204.215	40.100460	-105.041702
19,000.00	90.00	175.50	7,523.00	-11,398.34	415.07	1,279,573.926	3,128,220.934	40.099913	-105.041646
19,200.00	90.00	175.50	7,523.00	-11,597.73	430.76	1,279,374.626	3,128,237.653	40.099365	-105.041590
19,400.00	90.00	175.50	7,523.00	-11,797.11	446.46	1,279,175.326	3,128,254.371	40.098818	-105.041534
19,600.00	90.00	175.50	7,523.00	-11,996.49	462.15	1,278,976.026	3,128,271.090	40.098271	-105.041478
19,800.00	90.00	175.50	7,523.00	-12,195.88	477.84	1,278,776.726	3,128,287.809	40.097723	-105.041422
20,000.00	90.00	175.50	7,523.00	-12,395.26	493.53	1,278,577.426	3,128,304.528	40.097176	-105.041365
20,200.00	90.00	175.50	7,523.00	-12,594.64	509.22	1,278,378.127	3,128,321.247	40.096629	-105.041309
20,400.00	90.00	175.50	7,523.00	-12,794.03	524.92	1,278,178.827	3,128,337.966	40.096081	-105.041253
20,600.00	90.00	175.50	7,523.00	-12,993.41	540.61	1,277,979.527	3,128,354.685	40.095534	-105.041197
20,800.00	90.00	175.50	7,523.00	-13,192.80	556.30	1,277,780.227	3,128,371.404	40.094987	-105.041141
21,000.00	90.00	175.50	7,523.00	-13,392.18	571.99	1,277,580.927	3,128,388.122	40.094439	-105.041085
21,200.00	90.00	175.50	7,523.00	-13,591.56	587.68	1,277,381.627	3,128,404.841	40.093892	-105.041029
21,400.00	90.00	175.50	7,523.00	-13,790.95	603.37	1,277,182.327	3,128,421.560	40.093345	-105.040973
21,536.95	90.00	175.50	7,523.00	-13,927.47	614.12	1,277,045.860	3,128,433.008	40.092970	-105.040935
Start Turn 2/100									
21,600.00	90.00	176.76	7,523.00	-13,990.38	618.37	1,276,982.974	3,128,437.587	40.092797	-105.040919
21,800.00	90.00	180.76	7,523.00	-14,190.29	622.70	1,276,783.086	3,128,442.941	40.092248	-105.040904
22,000.00	90.00	184.76	7,523.00	-14,390.02	613.07	1,276,583.312	3,128,434.337	40.091700	-105.040938
22,068.65	90.00	186.13	7,523.00	-14,458.36	606.55	1,276,514.940	3,128,428.172	40.091512	-105.040962
Hold 186.13 Az									
22,200.00	90.00	186.13	7,523.00	-14,588.95	592.51	1,276,384.272	3,128,414.810	40.091154	-105.041012
22,400.00	90.00	186.13	7,523.00	-14,787.81	571.14	1,276,185.310	3,128,394.464	40.090608	-105.041088
22,600.00	90.00	186.13	7,523.00	-14,986.66	549.77	1,275,986.348	3,128,374.117	40.090062	-105.041165
22,800.00	90.00	186.13	7,523.00	-15,185.52	528.40	1,275,787.385	3,128,353.771	40.089516	-105.041241
22,996.52	90.00	186.13	7,523.00	-15,380.92	507.40	1,275,591.883	3,128,333.778	40.088980	-105.041316
TD at 22996.52									

Design Targets									
Target Name	Dip Angle (°)	Dip Dir. (°)	TVD (usft)	+N/-S (usft)	+E/-W (usft)	Northing (usft)	Easting (usft)	Latitude	Longitude
- hit/miss target									
- Shape									
REGNIER FARMS 1F-1! - plan hits target center - Point	0.00	0.00	7,523.00	-378.46	551.34	1,290,594.364	3,128,300.419	40.130164	-105.041158
REGNIER FARMS 1F-1! - plan hits target center - Point	0.00	0.00	7,523.00	-15,380.92	507.40	1,275,591.883	3,128,333.778	40.088980	-105.041316

Database:	EDM 5000.14 Single User Db	Local Co-ordinate Reference:	Well REGNIER FARMS 1F-19H-B268
Company:	Crestone Peak Resources	TVD Reference:	WELL @ 4989.00usft (Original Well Elev)
Project:	Sec 19 T2N-R68W	MD Reference:	WELL @ 4989.00usft (Original Well Elev)
Site:	Regnier Farms Pad	North Reference:	True
Well:	REGNIER FARMS 1F-19H-B268	Survey Calculation Method:	Minimum Curvature
Wellbore:	Wellbore #1		
Design:	Design #1 22Mar18 kjs		

Plan Annotations				
Measured Depth (usft)	Vertical Depth (usft)	Local Coordinates		Comment
		+N/-S (usft)	+E/-W (usft)	
300.00	300.00	0.00	0.00	Start Build 2.00
569.07	568.68	7.12	10.43	Hold 5.38 Inc, 55.66 Az
6,799.04	6,771.18	336.73	492.86	KOP 8/100
7,961.95	7,523.00	-378.46	551.34	LP 90 Inc, 180 Az
13,961.95	7,523.00	-6,378.46	551.34	Start Turn 2.00
14,236.95	7,523.00	-6,653.04	538.15	Hold 185.5 Az
16,836.95	7,523.00	-9,241.07	288.95	Start Turn -2.00
17,336.95	7,523.00	-9,740.42	284.59	Hold 175.5 Az
21,536.95	7,523.00	-13,927.47	614.12	Start Turn 2/100
22,068.65	7,523.00	-14,458.36	606.55	Hold 186.13 Az
22,996.52	7,523.00	-15,380.92	507.40	TD at 22996.52