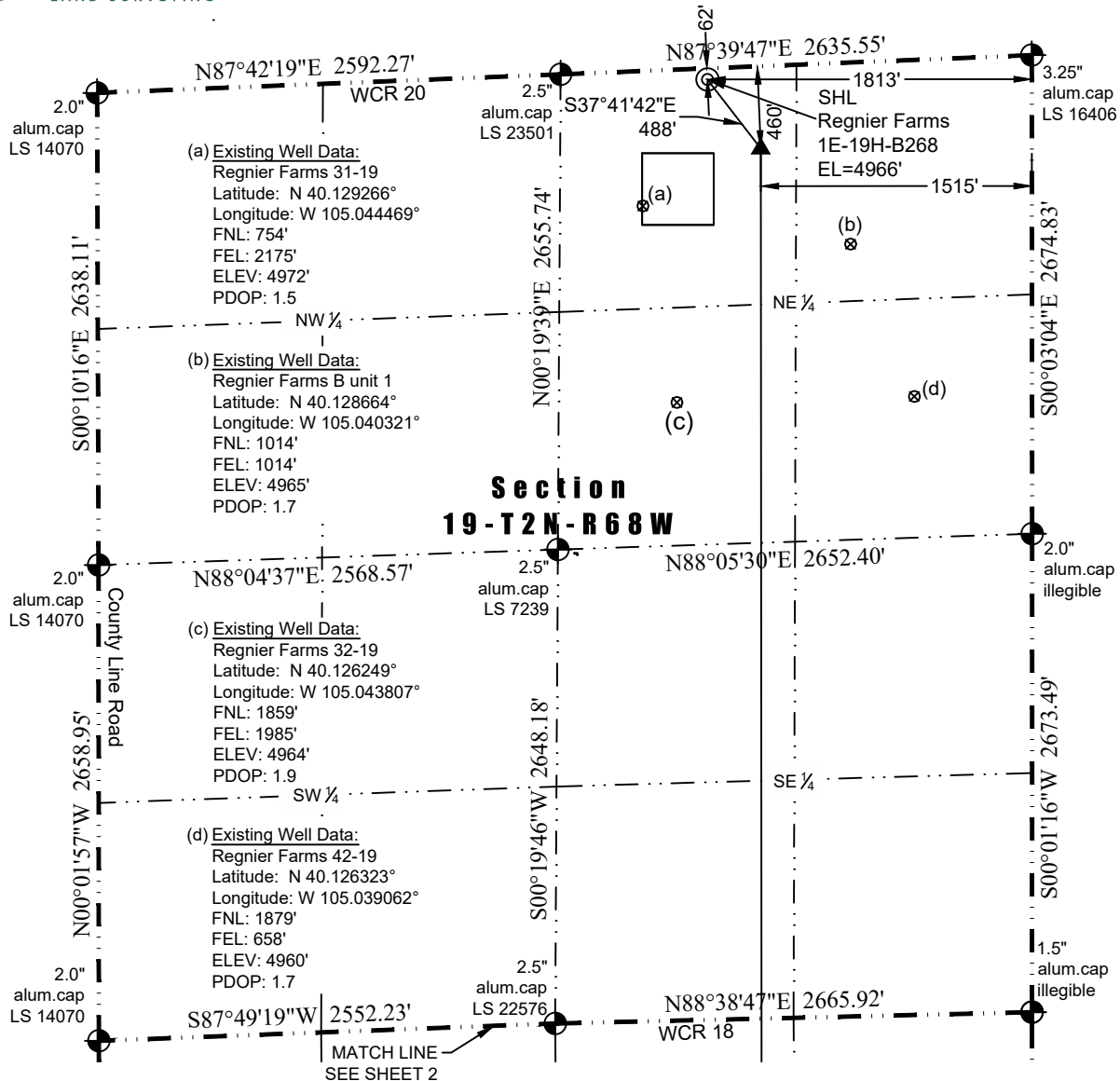


WELL LOCATION CERTIFICATE

THIS MAP DOES NOT REPRESENT A BOUNDARY SURVEY



In accordance with a request from Jay Knutson of Crestone Peak Resources, Washburn Land Surveying, LLC has determined the location of the **Regnier Farms 1E-19H-B268** well site to be SHL: 62' FNL and 1813' FEL, (TPZ: 460' FNL and 1515' FEL), (BHL: 460' FSL and 1515' FEL), as measured at ninety (90) degrees from the section lines of Sections 19, 30 & 31 Township 2 North, Range 68 West of the 6th Principal Meridian, Weld County Colorado.

LEGEND

- ⊗ - Existing Well
- ⊕ - Found Survey Monument
- ⊙ - Calculated Dimension
- ⊙ - Surface Hole Location (SHL)
- ▲ - Top of Producing Zone (TPZ)
- ✕ - Bottom Hole Location (BHL)

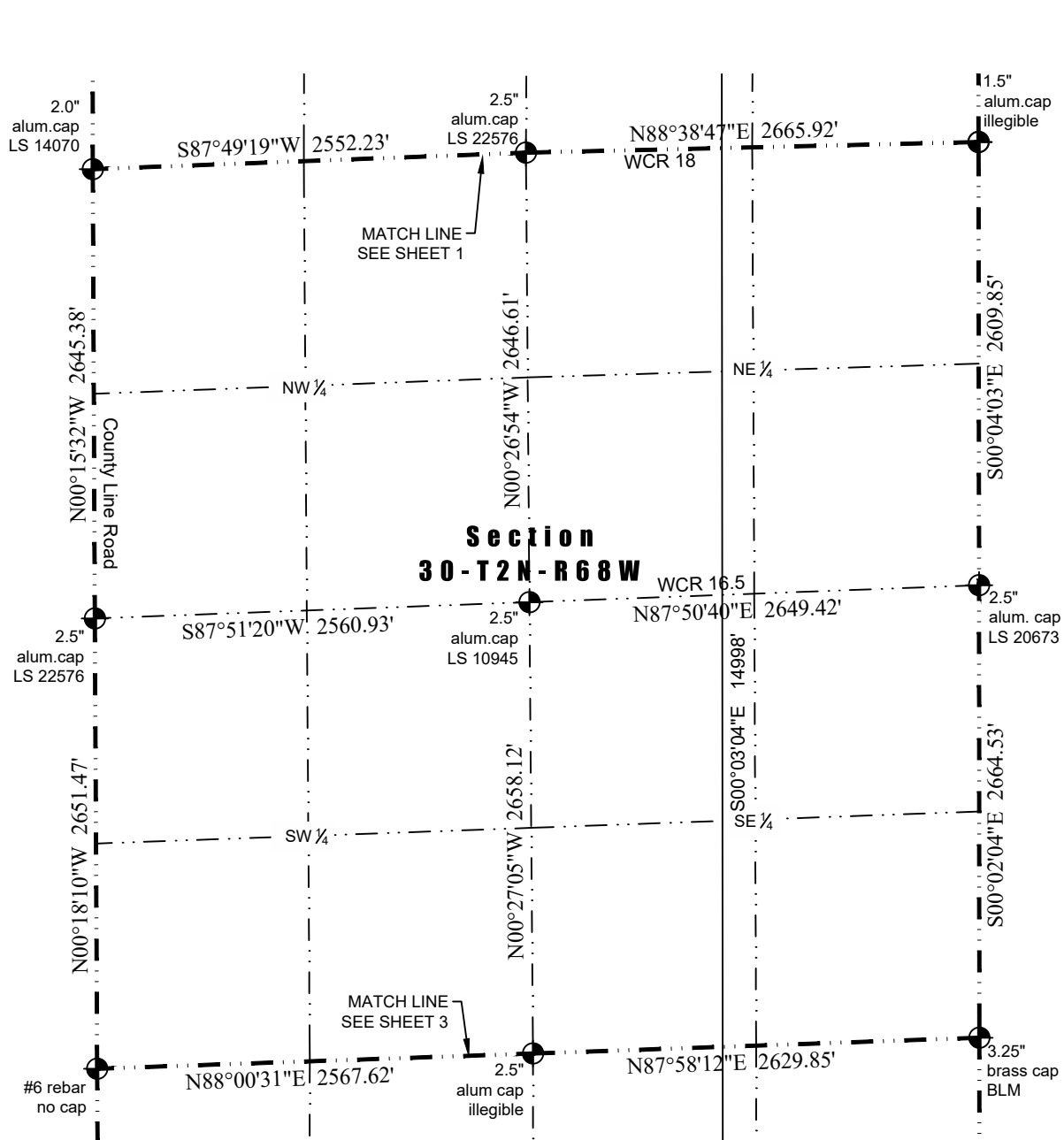
I hereby certify that this Well Location Certificate was prepared by me or under my direct supervision on 4/6/2018 for and on behalf of Crestone Peak Resources that it is not a Land Survey Plat or an Improvement Survey Plat and that it is not to be relied upon for establishment of fences, buildings, or other future improvement lines.

4-6-2018

John Robert McGehee LS#38219
 Well: Regnier Farms 1E-19H-B268 WLC

WELL LOCATION CERTIFICATE

THIS MAP DOES NOT REPRESENT A BOUNDARY SURVEY

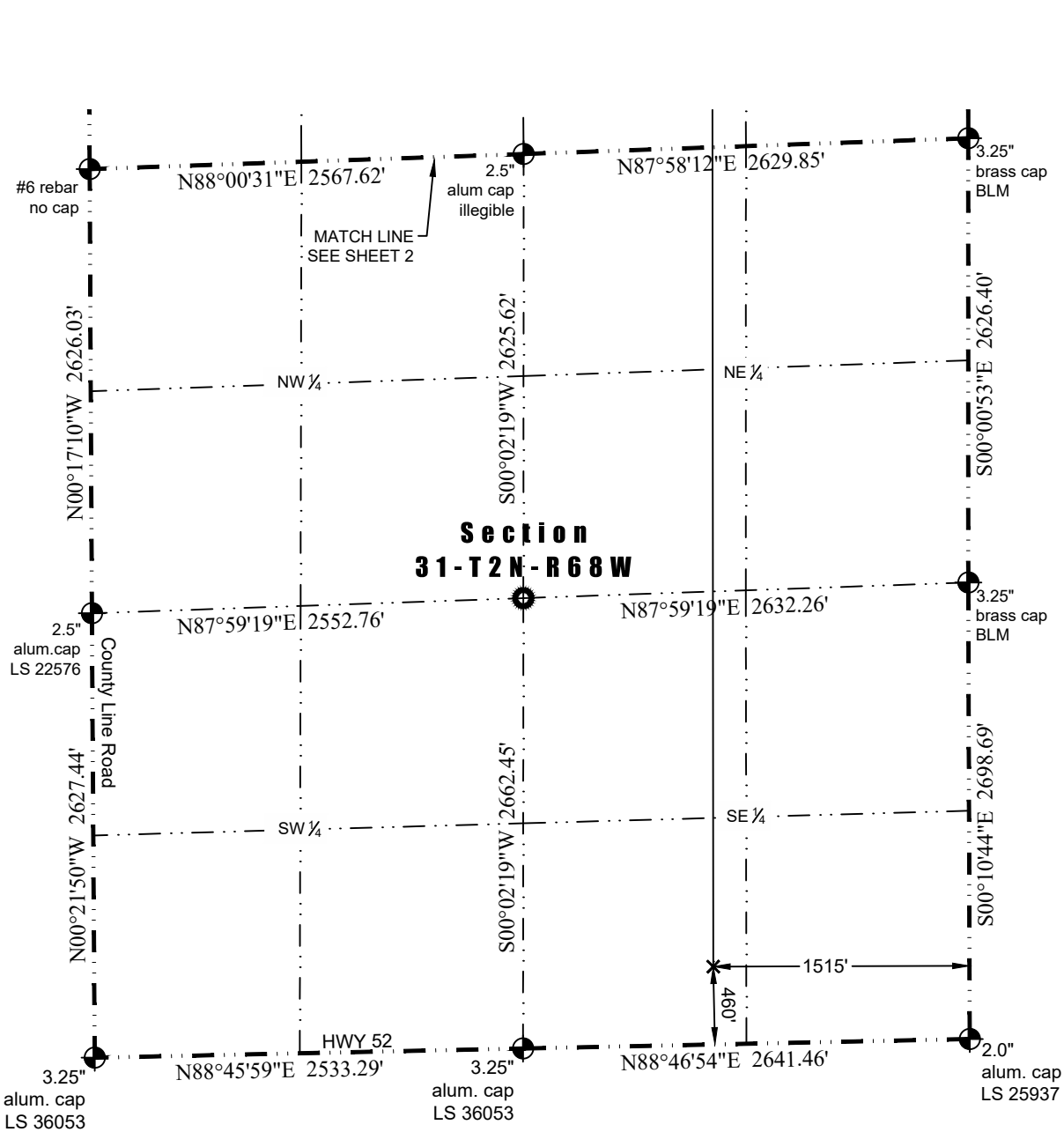


LEGEND

- ⊗ - Existing Well
- ⊕ - Found Survey Monument
- ⊙ - Calculated Dimension
- ⊙ - Surface Hole Location (SHL)
- ▲ - Top of Producing Zone (TPZ)
- ✕ - Bottom Hole Location (BHL)

WELL LOCATION CERTIFICATE

THIS MAP DOES NOT REPRESENT A BOUNDARY SURVEY



LEGEND

- ⊗ - Existing Well
- ⊕ - Found Survey Monument
- ⊙ - Calculated Dimension
- ⊙ - Surface Hole Location (SHL)
- ▲ - Top of Producing Zone (TPZ)
- ✕ - Bottom Hole Location (BHL)